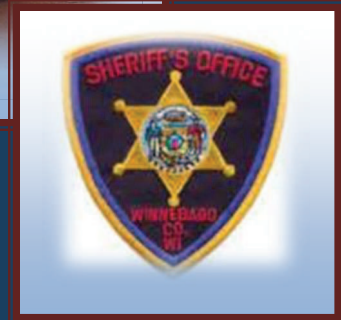


Winnebago County Sheriff's Office

2013 Annual Report



Mission Statement

*The Winnebago County Sheriff's Office
is committed to providing
comprehensive public safety services
in partnership with its citizens to
promote a safe and secure community.*

*In order to achieve the Sheriff's Office
mission, emphasis is placed on
professionalism, teamwork, and
individual growth. The Office strives to
be a leader within the public safety
community and values integrity, fairness,
and compassion.*

Message from Sheriff John F. Matz

On behalf of the men and women of the Winnebago County Sheriff's Office, I am excited to present the inaugural edition of our annual report and would like to thank you for taking the time to review it.

As Sheriff, I believe in transparency of government and trust that this report will serve to further that objective and aid in expanding the Agency's collaborative efforts with its citizen stakeholders.

2013 was a busy year at the Sheriff's Office and as you read through the report, I hope that you enjoy learning more about the services we provide that help make Winnebago County a great place to live, work and play.

Also, for real time updates and information, don't forget to check us out on Facebook and YouTube, or follow us on Twitter.

*Best Regards,
John F. Matz, Sheriff*



The Judiciary and Public Safety Committee reviews policy issues and advise and recommend appropriate policy goals and legislative action relating to the Clerk of Courts, Sheriff, District Attorney, Coroner, Corporation Council, Family Court Commissioner, Law Library, Emergency Management and Child Support.

This committee is composed of five-(5) County Board Supervisors:

Bill Wingren	Chair
Ellis, W. Thomas	Vice-Chair
Bill Roh	Secretary
Paul Eisen	Member
Larry Smith	Member

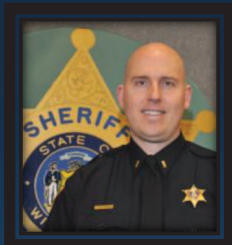
Table of Contents

Administrative Staff.....	Page 4
Patrol Division.....	Page 5
Corrections Division	Page 9
Detective Division.....	Page 13
Lake Winnebago Area Metropolitan Drug Unit (LWAM).....	Page 14
Communications Center (911).....	Page 15
Country USA.....	Page 16
Rock USA.....	Page 16
EAA.....	Page 17
Lao Hmong Soccer Tournament.....	Page 17
SWAT Team.....	Page 18
Tactical Team.....	Page 18
Dive/Rescue Team.....	Page 19
Motorcycle Patrol	Page 19
Boat Patrol	Page 19
Snowmobile Patrol.....	Page 20
K9 Unit.....	Page 20
Accident Re-Construction.....	Page 21
Honor Guard.....	Page 21
Community Relations.....	Page 22



2013 United Way Fundraising Campaign

Administrative Staff



*Chief Deputy
Todd Christopherson*



*Captain of Corrections
Gregory Cianciolo*



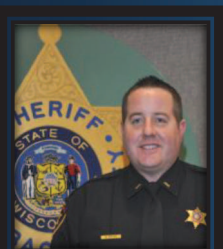
*Captain of Patrol
Todd Christie*



*Captain of Detectives
David Mack*



*Captain of Admin.
Mark Habeck*



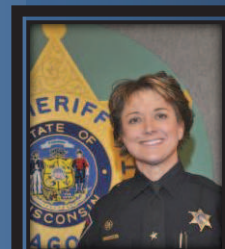
*Admin. Lt.
William Anthes*



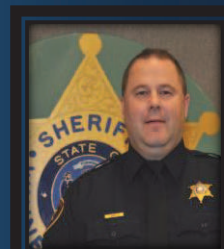
*Shift Lt.
Gordon LeDioyt*



*Shift Lt.
Steven Verwiel*



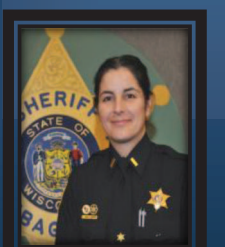
*Shift Lt.
Lori Seiler*



*Shift Lt.
Steven Brewer*



*Lt. Corrections
Carrie Koepp*



*Lt. GPS
& Prof. Standards
Lara Vendola*



*Lt.
Court Services
Joseph Kroncke*



*Lt.
Communications
Jesse Jensen*



*Lt. Training &
Special Operations
Darin Rice*

Patrol Division

The Winnebago County Sheriff's Office Patrol Division provides law enforcement services to approximately 167,000 citizens of Winnebago County. The Patrol Division is comprised of 46 members who include:

- 1 – Captain
- 1 – Administrative Lieutenant
- 4 – Shift Lieutenants
- 4 – Sergeants
- 36 – Patrol Deputies

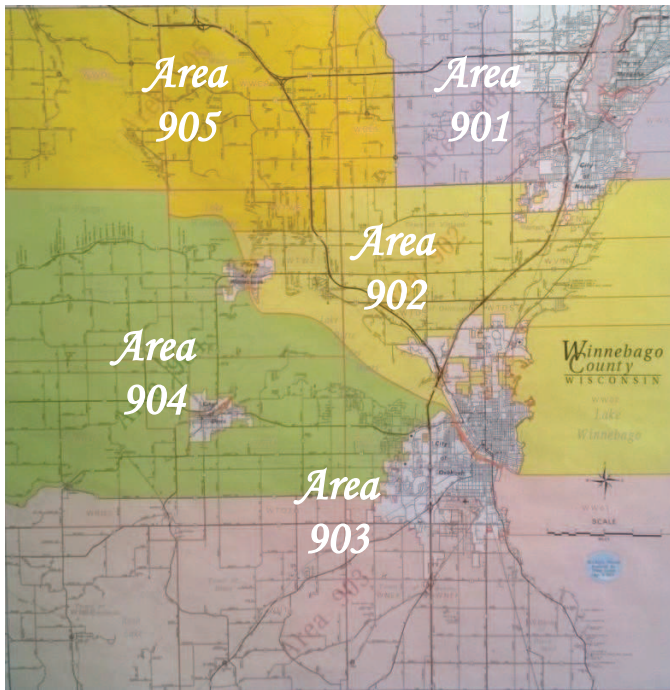


In addition to patrol duties, many members of the Patrol Division are assigned to specialized units.

The Patrol Division utilizes all available resources, training and professionalism to provide citizens with the best available services and utilizes community orientated policing philosophies. Deputies are assigned to the same District Area of the county on a daily basis throughout the year. This provides the deputy with improved knowledge of their assigned area, the citizens within, and its businesses.

Deputies patrol USH 41, USH 10, USH 45, county highways and town roads. They investigate accidents and criminal activity, and enforce State Laws and County Ordinances. The Patrol Division regularly participates in various State level activities and utilizes several Wisconsin Department of Transportation and Bureau of Traffic Safety Grants to promote highway safety and accident reduction. Deputies also attend Town Board Meetings on a regular basis to address concerns of citizens and provide information upon request.

2013 District Comparisons



Winnebago County Sheriff's Office Patrol Jurisdiction is broken up into five-(5) Districts spanning throughout the entire county. Deputies are assigned areas in order to serve citizens in an efficient and effective manner.

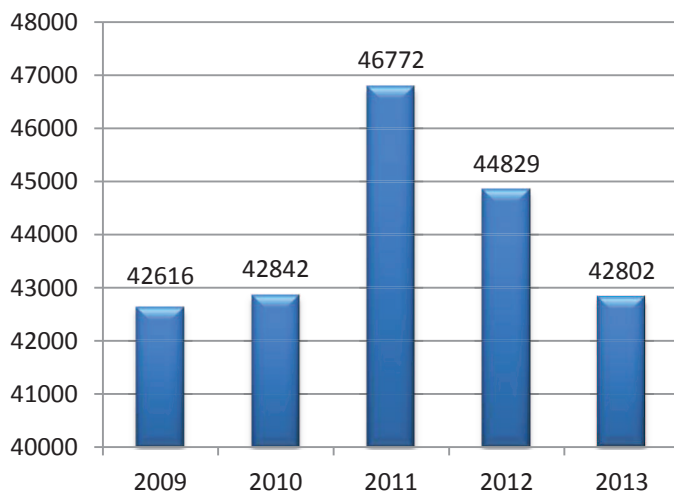


Calls for Service include all events reported by citizens and outside agencies as well as those initiated by the Deputy

2013 Calls for Service Monthly Breakdown

		Officer Initiated	Reported	Total
2013	Jan	2,693	1,024	3,717
	Feb	2,253	1,040	3,293
	Mar	2,656	916	3,572
	Apr	2,611	951	3,562
	May	2,632	1,023	3,655
	Jun	2,742	1,184	3,926
	Jul	2,414	1,193	3,607
	Aug	2,305	1,071	3,376
	Sep	2,553	971	3,524
	Oct	2,720	971	3,691
	Nov	2,449	1,004	3,453
	Dec	2,257	1,169	3,426
	Total	30,285	12,517	42,802
Total		30,285	12,517	42,802

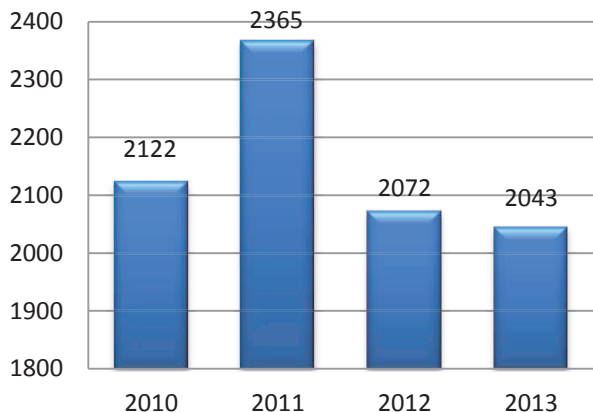
Call for Service History



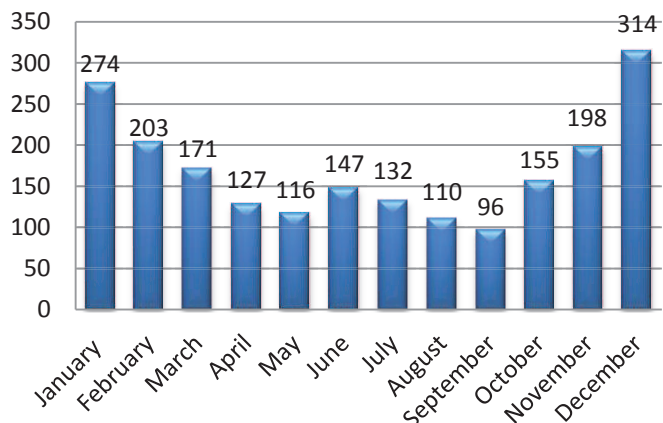
In 2013, deputies initiated nearly 2.5 times more incidents than those that were reported. Our deputies show they are committed to a proactive and community oriented approach to public service.

2013 Accidents

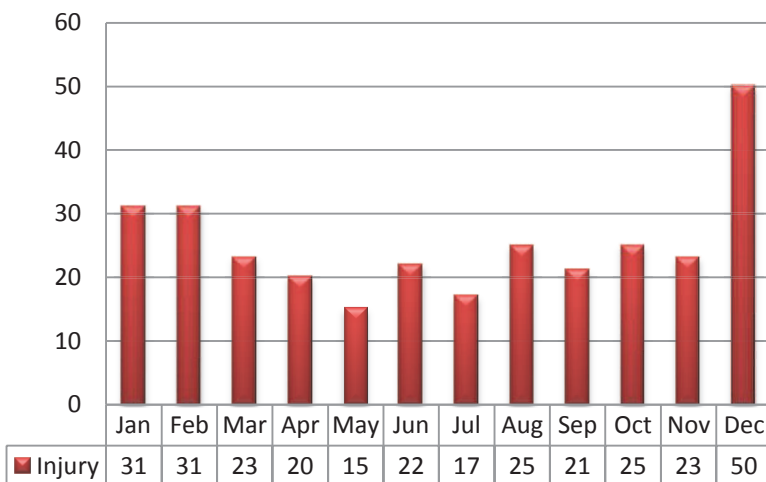
Accident History



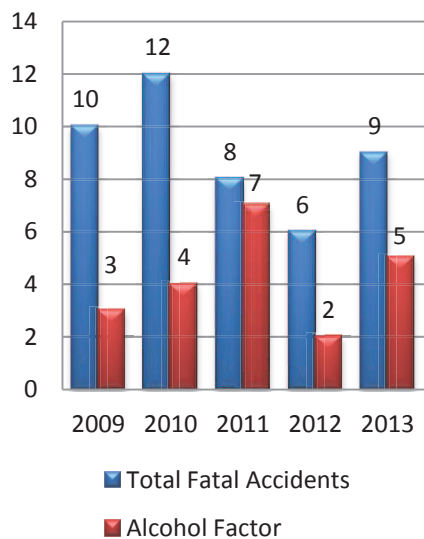
2013 Total Accidents



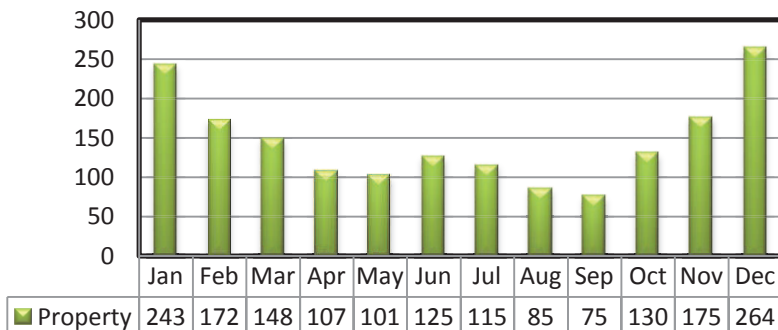
2013 Accidents with Injury



Fatal Accident History

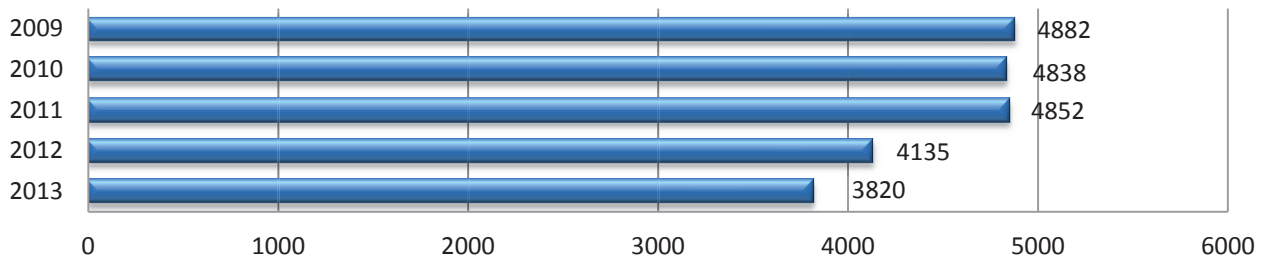


2013 Accidents with Property Damage

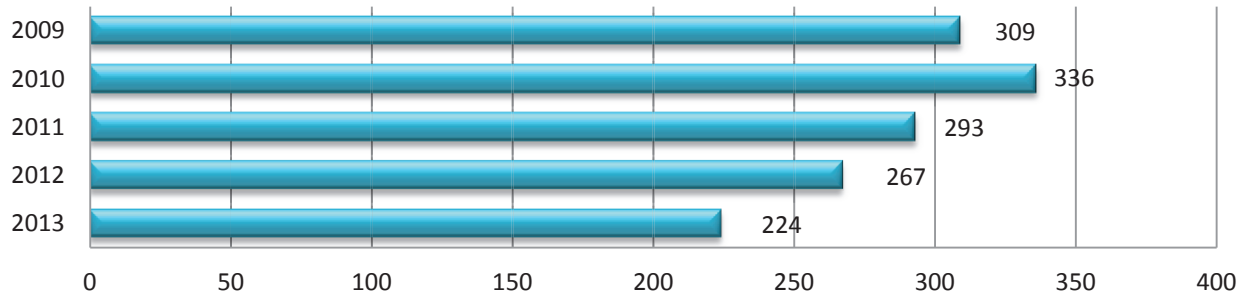


2013 Enforcement Efforts

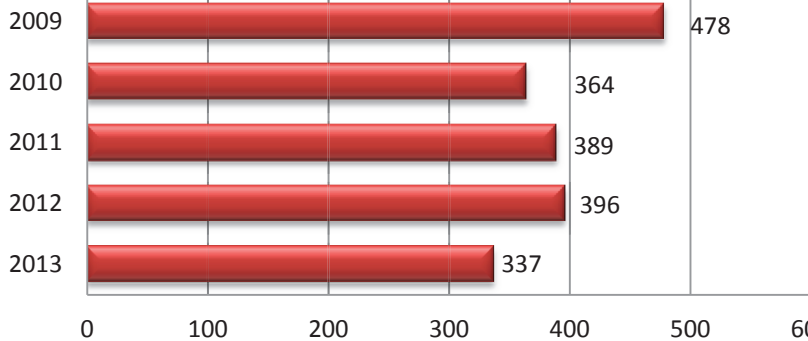
Traffic Citations



O.W.I.



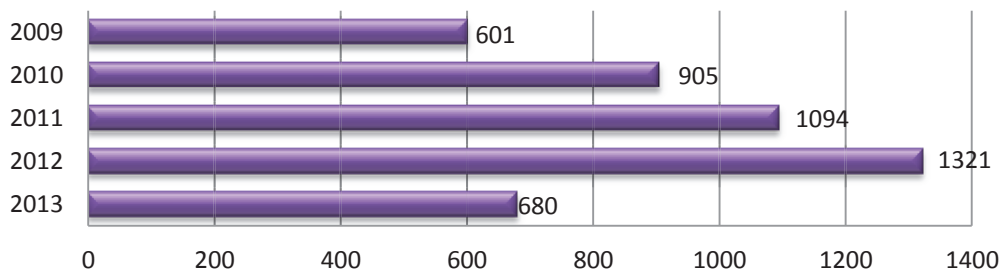
Ordinance Violations



The above graphs do not include grant enforcement totals or enforcement action taken during Special Events such as Country USA, Rock USA, etc.

Grant enforcement efforts are dependent upon the amount of grant funding received which varies from year-to-year as well as the amount of staffing available to work the grant details.

Grant Enforcement Citations



Corrections Division

Mission Statement

To ensure the safety of all persons, staff, visitors, inmates and community by providing for the care, custody, and control of incarcerated persons and growth for all by providing opportunities in education, programming and counseling.

These opportunities shall be achieved by implementation of the principles and philosophies of objective jail classification.



The Corrections Division provides a healthy, safe and secure environment for inmates, visitors, and staff alike. The Corrections Division is comprised of :

1 – Captain	6 5 - Deputies
3 – Lieutenants	2 – Classification Coordinators
6 – Sergeants	3 – Account Clerks
6 – Corporals	11 - Control Module/Booking Clerks
1 – WRU Supervisor	1 – GPS Coordinator

The Winnebago County Jail is a direct supervision facility. The jail has 355 beds and a functional capacity of 320 inmates. There are three 64-bed direct supervision housing units which place one Deputy inside the housing unit with the inmates. There are also three specialized housing units which provide a more secure environment by remote supervision. These units house inmates that have special needs, protective custody, high security, and those who need to be separated from the general population. The jail utilizes the Northpointe Objective Classification System to determine the appropriate housing unit for each inmate. This system allows Deputies to effectively manage inmate behavior and maintain the security of the facility.

In addition to operating a direct supervision facility, the division fulfills the statutory obligation of the Sheriff to maintain the courts; including Courthouse Security, Inmate Transport, and Interstate Extraditions.

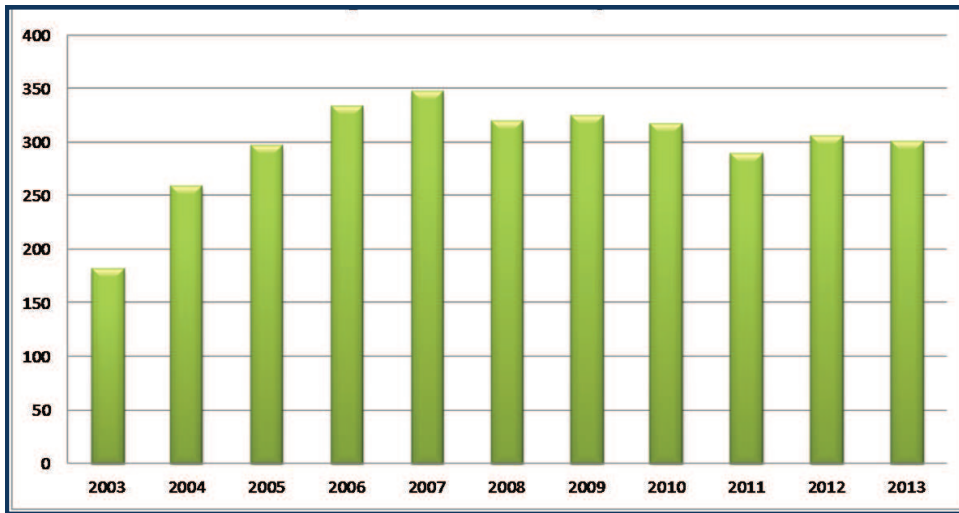
The Work Release/GPS Unit is a part of this division and works in conjunction with the Safe Streets Committee and Courts to provide alternatives to incarceration and pre-conviction supervision to include: Drug Court, the SSTOP program, 24/7 Sobriety Program, Electronic Monitoring (Home Arrest), Community Service, and Work Release. In 2013, the unit was responsible for overseeing an average of 99 clients per day under the 24/7 Sobriety Program. Additionally, the unit was responsible for supervising an average of 36 inmates per day on the Electronic Monitoring Program, and 22 inmates per day exercising work release privileges.

Inmates are assessed and afforded various opportunities to attend creative and innovative programs and/or counseling specific to their needs. The jail offers the following programs to incarcerated inmates:

- AA/NA
- GED/HSED by FVTC
- Family Services
- UW Extension Classes
- Inmates may work in Community Service Programs such as the Festival of Lights or setting up events at the Expo Building.

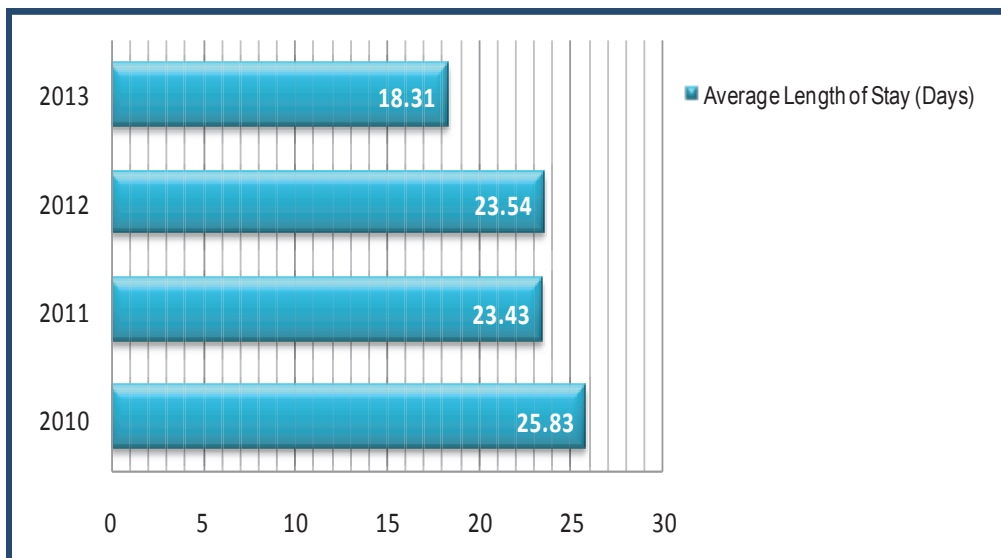
The goal is to return a detained person back into the community with better decision making skills.

Average Inmate Total Population

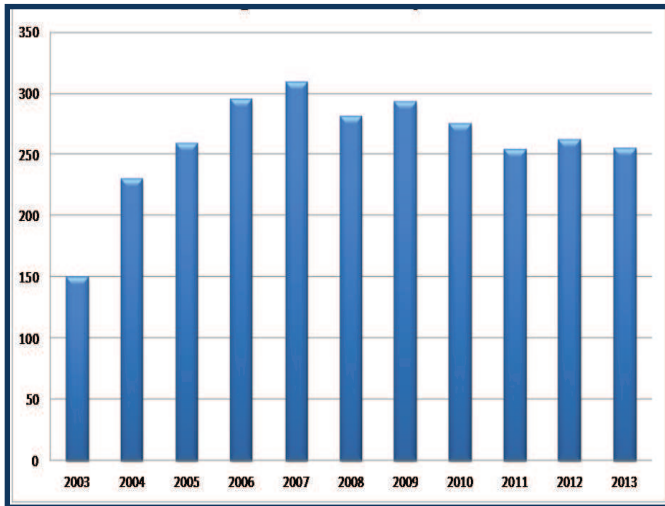


2003	181
2004	258
2005	296
2006	334
2007	347
2008	319
2009	324
2010	317
2011	289
2012	305
2013	301

Average Length of Stay (Days)

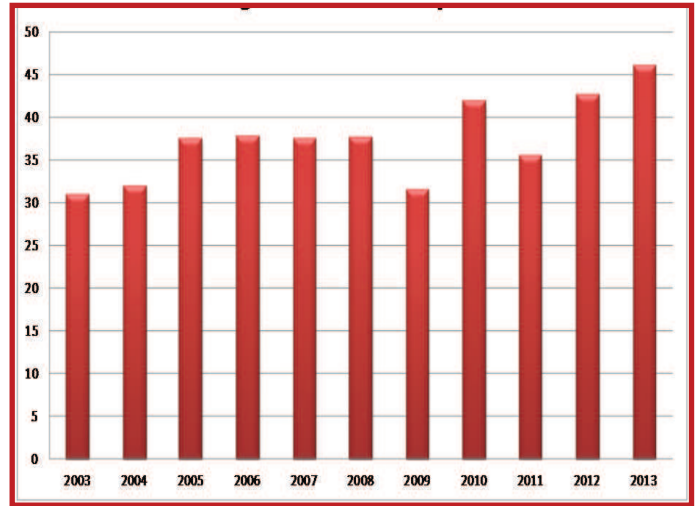


Average Male Inmate Population



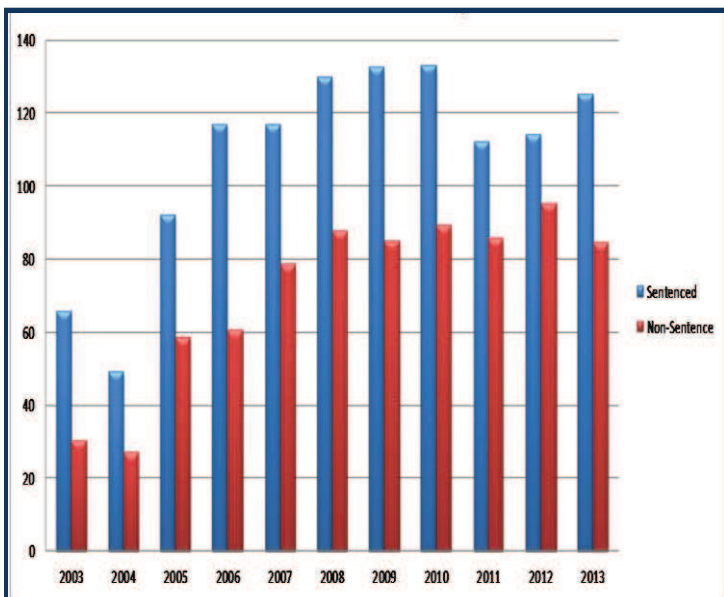
2003	150
2004	229
2005	259
2006	295
2007	309
2008	281
2009	293
2010	275
2011	254
2012	262
2013	255

Average Female Inmate Population

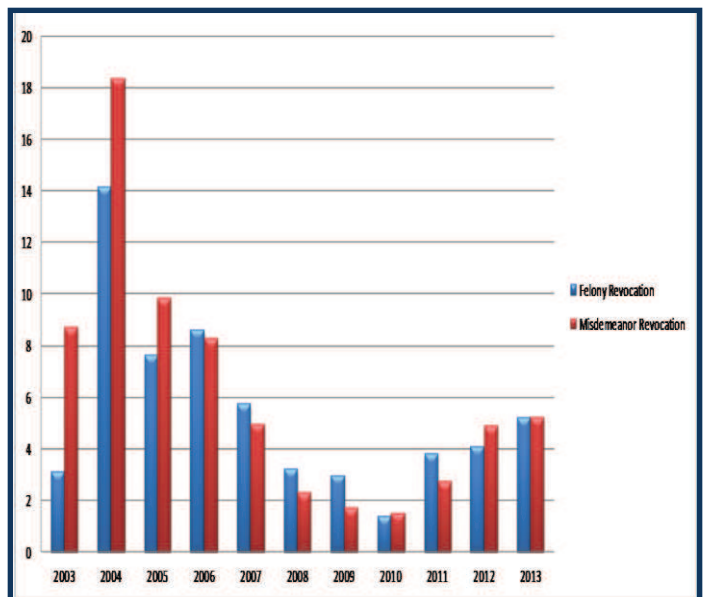


2003	31
2004	32
2005	37
2006	38
2007	37
2008	38
2009	32
2010	42
2011	35
2012	43
2013	46

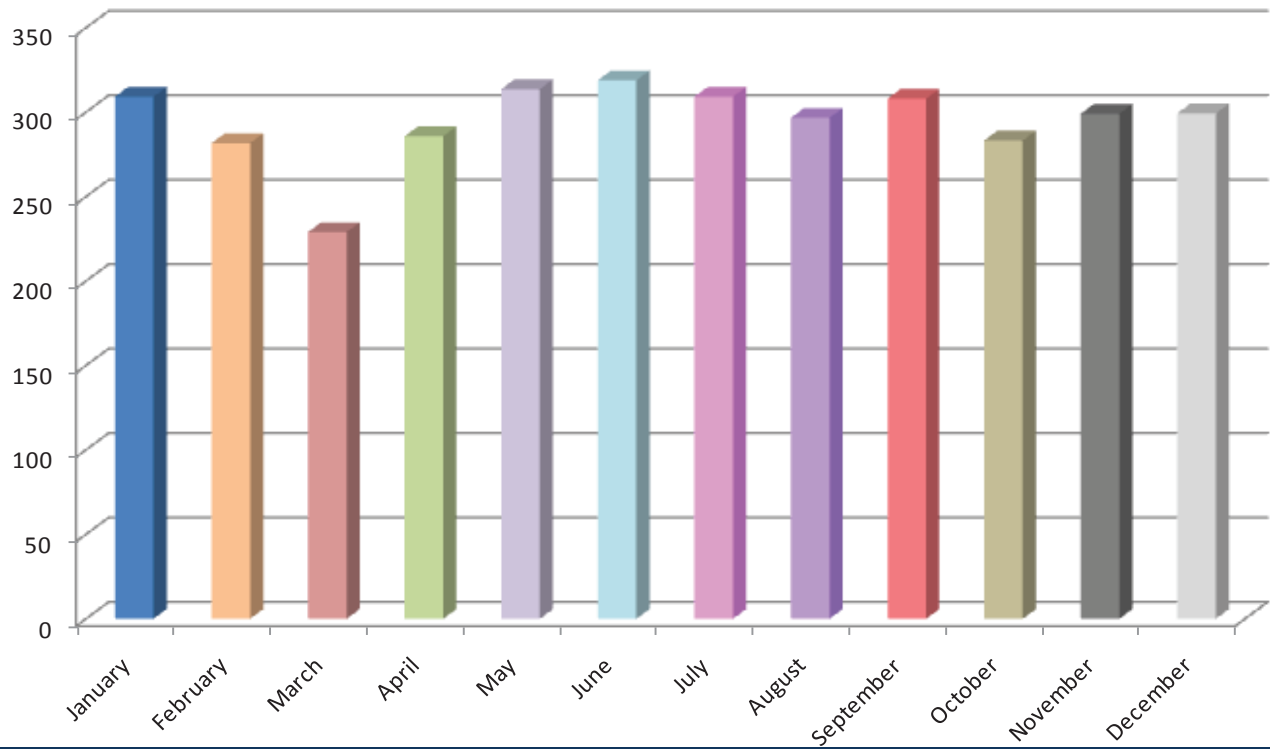
Sentenced/Non-Sentenced Population



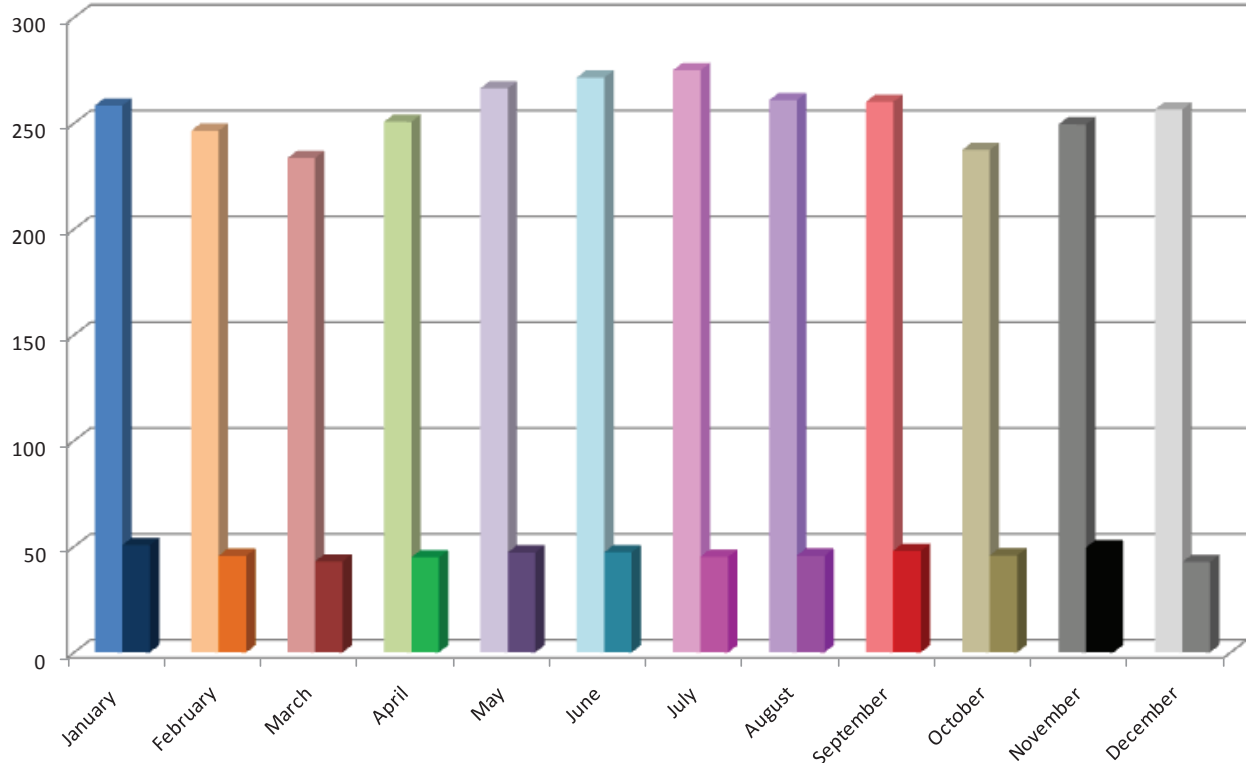
Felony/Misdemeanor Revocation Population



Monthly Population Totals



Male - Female	84% 16%	84% 16%	84% 16%	85% 15%	85% 15%	85% 15%	86% 14%	85% 15%	84% 16%	84% 16%	83% 17%	86% 14%
---------------	------------	------------	------------	------------	------------	------------	------------	------------	------------	------------	------------	------------



Detective Division

The Detective Division assists the citizens of Winnebago County by conducting professional, objective and complete investigations centered on solving crimes and holding perpetrators accountable.

They are responsible for the investigation of felonies, misdemeanors and all violent crimes.

The division submits cases for criminal prosecution, networks with other agencies for joint investigations, and creates partnerships in the community to enhance investigative resources.

The Detective Division consists of:

- 1 – Captain
- 1 – Detective Sergeant
- 6 – Detectives
- 1 – Civilian Evidence Coordinator

While all detectives are highly trained in the collection and preservation of evidence, each receives particular training allowing them to specialize in the following:

- Arson
- Crimes Against Children
- Animal Abuse
- Sexual Assault
- Drug Investigation
- Fraud/Identity Theft
- Financial and Computer Crimes



Pictured above are members of the Detective Division receiving an award from the Mid-States Organized Crime Information Center for their work in uncovering a burglary ring that spanned 22 jurisdictions.

Reported Index Crimes

The Uniform Crime Reporting (UCR) Program collects information on the crimes below that are reported by law enforcement to track national crime trends. The following charts illustrate the number of offenses reported to the Federal Bureau of Investigation by the Sheriff's Office.

UCR Violent Crime	2003	2004	2005	2006	2007	2008	2009	2010	2011	2012	2013
Homicide	1	0	1	1	2	0	1	2	1	1	0
Rape	2	1	5	1	0	2	0	0	0	0	0
Robbery	0	0	0	0	0	1	1	0	0	0	1
Aggravated Assault	57	83	99	96	97	93	111	103	111	119	89
Total Violent Crimes	60	84	105	98	99	96	113	105	112	120	90

UCR Property Crime	2003	2004	2005	2006	2007	2008	2009	2010	2011	2012	2013
Burglary	75	62	92	79	131	138	109	102	99	112	65
Theft	291	294	279	222	260	249	226	251	231	190	166
Auto Theft	19	26	24	14	19	24	10	12	15	19	5
Total Property Crimes	385	382	395	315	410	411	345	365	345	321	236

Lake Winnebago Area Metropolitan Drug Unit (LWAM)

Investigators are assigned to the Lake Winnebago Area Metropolitan Drug Enforcement Drug Unit which is a joint task force involving surrounding agencies from Calumet, Fond du Lac, Outagamie and Winnebago Counties.



LWAM ARRESTS

2009	2010	2011	2012	2013
415	544	607	453	522

LWAM ASSET FORFEITURES

	2009	2010	2011	2012	2013
Seized	\$219,685	\$302,127	\$186,472	\$394,801	\$271,573
Forfeited	\$120,913	\$239,455	\$140,576	\$325,085	\$195,262

LWAM DRUG SEIZURES

DRUG	2009	2010	2011	2012	2013
Marijuana	223 lbs	211 lbs	69 lbs	232 lbs	168 lbs
Plants	715*	862	269	365	122
Cocaine	1,730 g	1,492 g	352 g	1,689 g	1,902 g
Crack	483 g	514 g	572 g	188 g	253 g
Meth	2.8 g	19 g	31 g	19 g	529 g
Meth Labs	0	1	5	4	6
Heroin	33.4 g	108 g	129 g	127 g	373 g
MDMA	2,793 du	260 du	616 du	147 du	151 du
Psilocybin	870 g	26 g	49 g	242 g	67 g
Pharmaceuticals	3,126 du	3,786 du	3,771 du	2,246 du	3,107 du

* Does not include 25, 000 wild plant grow in Fond du Lac

Communications Center

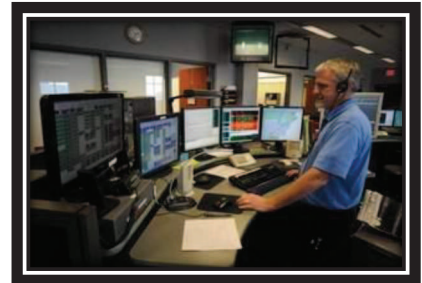


The Sheriff's Office operates the 911 Communications Center for all of Winnebago County. It is formally identified as a Public Safety Answering Point (PSAP) and is the initial point of contact for citizens in need of assistance.

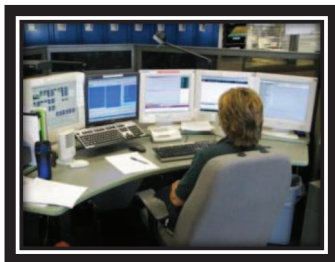
The Communications Center is operated by 31 Dispatchers and one-(1) Lieutenant.

Dispatchers monitor and coordinate the operations for law, fire, and emergency medical service providers within Winnebago County. This includes:

- ❖ 9 – Law Enforcement Agencies
- ❖ 14 – Fire Departments
- ❖ 1 – Ambulance Service
- ❖ 12 – First Responder Groups



Dispatchers utilize a system known as Computer Aided Dispatch (CAD) to enter call information. As they listen to callers and ask questions, they record information in the CAD System. Information such as name of the caller, location of the incident, what specifically is occurring, and other appropriate information that is specific to the type of incident.



In 2013, the Winnebago County Communications Center handled 43,809 9-1-1 calls, or approximately 120 calls each day. Dispatchers also provided oversight to 149,264 emergency responder incidents or approximately 409 incidents for service per day.

2013 saw all public safety agencies in Winnebago County transition from a radio system based on VHF to an 800 MHz digitally trunked system. New FCC requirements, in addition to an aged system, were some of the catalysts towards upgrading. The new 800 MHz System has improved radio clarity and enhances communications for users while meeting the needs of Winnebago County for the foreseeable future.



As a cost saving measure, Outagamie and Winnebago County partnered to purchase certain system components that are capable of handling the needs of both counties. By reducing the duplication of equipment, significant savings were realized.

2013 Summer Events

Winnebago County hosts several large events during the summer months located around the City of Oshkosh and within the primary jurisdiction of the Sheriff's Office. These events require additional personnel beyond the normal staffing levels for the Sheriff's Office. In order to meet these obligations, the Sheriff's Office relies on the use of certified law enforcement deputies assigned to the Corrections Division. Additionally, the Sheriff's Office accommodates the additional staffing requirements by not allowing personnel to use time off during the event periods. The labor costs associated with each event is reimbursed by the event promoter.

Country USA and Rock USA



June 25-29, 2013

Country USA and Rock USA were held at the Ford Festival Park located primarily in the Town of Nekimi. Both events were staffed 24-hours a day to provide law enforcement services to the festival grounds. There was an average of 44 officers scheduled during a typical day for Country USA and an average of 43 officers scheduled during a typical day for Rock USA. The majority of the officers were scheduled for 11 hour shifts; this included Command Staff, Detectives, Patrol Deputies, Law Enforcement Certified Corrections Deputies, and Reserve Deputies of the Sheriff's Office. Three Dispatchers also worked the events on a daily basis.

As with previous years, Country USA and Rock USA had a large attendance. The estimated attendance was 130,000 for Country USA and 95, 000 for Rock USA. These attendance numbers include the people who camped at the venue for the duration of the events as well as people who traveled to the Ford Festival Park for individual performances.

Event Management estimated that approximately 2,000 campsites were sold for each event. The vast majority of individual campsites were occupied by several people. The total population of campers was estimated to be 8,000.



July 17-20, 2013

Officers working during the 2013 Country USA event responded to 411 calls for service. As a result of these calls for service, the following law enforcement action was taken:

Country USA	ORDINANCE CITATIONS		CUSTODIAL ARRESTS (Primary Charge)	
	Underage Alcohol	200	Probation Hold	6
	ID Violations	2	Disorderly Conduct	5
	Poss. Drug Paraphernalia	5	Battery	2
	Possession of THC	4	Poss. Drug/Drug Paraphernalia	1
	Disorderly Conduct	10	Substantial Battery	2
	Theft	3	Strangulation	1
	Crim. Damage to Property	2	Bail Jumping	1
	Littering	1	Resisting/Obstructing	1
	Battery	1	Misc. Warrants	4
	Obstructing	9		
	TOTAL CITATIONS	237	TOTAL CUSTODIAL ARRESTS	23

Officers working during the 2013 Rock USA event responded to 211 calls for service. As a result of these calls for service, the following law enforcement action was taken:

Rock USA	ORDINANCE CITATIONS		CUSTODIAL ARRESTS (Primary Charge)	
	Underage Alcohol	35	Disorderly Conduct	6
	Disorderly Conduct	4	Battery	2
	Poss. THC	6	Probation Hold	6
	Poss. Drug Paraphernalia	6	Poss. Drugs	1
	ID Violations	1	Misc. Warrants	3
	Resisting/Obstructing	2		
	Trespassing	1		
	TOTAL CITATIONS	55	TOTAL CUSTODIAL ARRESTS	18



❖ EAA AirVenture 2013

EAA was held on the grounds of Wittman Regional Airport in the City of Oshkosh and Town of Nekimi. An average of 20 officers were scheduled during a typical day of EAA. This included Command Staff, Detectives, Patrol Deputies, Law Enforcement Certified Corrections Deputies, and Reserve Deputies of the Sheriff's Office. Two Dispatchers also worked the event on a daily basis.



EAA Management estimated that 510,000 people attended the air show portion of the event. In addition to the daily air shows and vendor booths, EAA has a significant number of people who camp for the duration of the event. It was estimated that 40,000 people camped on the EAA grounds in 2013. EAA is also staffed 24 hours per day to provide law enforcement services for the event.

Officers working during the 2013 EAA event responded to 100 calls for service. As a result of these calls for service, the following law enforcement action was taken:

EAA	ORDINANCE CITATIONS		CUSTODIAL ARRESTS (Primary Charge)	
	Underage Alcohol	2	Criminal Damage to Property	2
	Disorderly Conduct	2	Disorderly Conduct	1
			OWI	1
			Misdemeanor Bail Jumping	1
			Misc. Warrants	3
	TOTAL CITATIONS	4	TOTAL CUSTODIAL ARRESTS	8



❖ Lao Hmong Soccer Tournament



The Lao Hmong Soccer Tournament was held at the Ford Festival Park located primarily in the Town of Nekimi. Nine-(9) officers were scheduled for each day to provide law enforcement services during daylight hours when the event was operational. No law enforcement action was taken during this event.

August 31 – Sept. 1, 2013

Specialty Teams

❖ S.W.A.T. (Special Weapons and Tactics)

The Winnebago County Sheriff's Office SWAT Team is comprised of 15 members (13 Deputies, one Menasha Police Officer and one Omro Police Officer). The team is highly trained and supplemented by 10 Crisis Negotiators and Command Post personnel during calls for service. SWAT Team members are on call 24 hours per day and their SWAT responsibilities are in addition to their regular duty assignments.

The SWAT Team responds to high-risk incidents within Winnebago County as well as outside jurisdictions through mutual aid requests. Winnebago County is designated by the State of Wisconsin as a Tier 1 SWAT Team and serves as one of eight regional SWAT Teams for the State under the ALERT (Aligned Law Enforcement Response Team) System. This designation places specific requirements on team members for training, fitness and operational abilities. As a regional team, Winnebago County receives funding for equipment and training through the Department of Homeland Security.

The SWAT Team responds to the following type of incidents:

- ❖ Hostage Situations
- ❖ Barricaded Subjects
- ❖ Armed Suicidal Subjects
- ❖ Execution of High-Risk Search/Arrest Warrants
- ❖ VIP Protection Details
- ❖ Counter Sniper
- ❖ Other Situation Where the Likelihood of Armed Resistance Appears Great



Pictured above are SWAT Team members receiving the 2013 SWAT Team of the Year award from the Wisconsin Association of SWAT Personnel for their actions in resolving an armed barricaded subject.

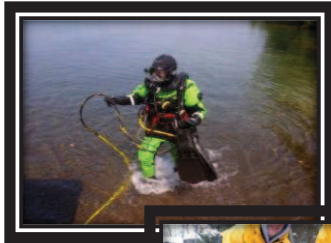


❖ Tactical Response Unit

The primary function of the Tactical Response Unit is to provide crowd control during riots or other incidents of civil unrest. The team is currently comprised of 34 deputies. Each deputy is equipped with a protective riot suit, riot helmet, and air purifying respirator. The team is used to provide law enforcement services during the annual Country USA and Rock USA music events.



❖ Dive/Rescue Team



The Winnebago County Sheriff's Office currently has a 10-member Dive/Rescue Team, which includes a Team Leader and an Assistant Team Leader. This unit is able to respond to any emergency on the water involving search and rescue. They are trained and equipped to handle surface search operations, open water operations, as well as evidence recoveries.



This team utilizes specialized equipment including:

- High Definition Side Imaging Sonar
- Infrared Underwater Camera
- Underwater Metal Detector
- Underwater Communications System
- Positive Pressure Full Facemasks
- Protective Dry Suits for diving in contaminated and cold water



❖ Motorcycle Patrol



The Motorcycle Patrol Unit was added to the Patrol Division in 2009 and we currently have one Harley-Davidson motorcycle in service. The motorcycle has proven to be an extremely effective tool in rapidly responding to calls for service in heavy traffic conditions that are all too common within Winnebago County. It is also used for special details such as parades and escorts.



❖ Boat Patrol



The Boat Patrol Unit is tasked with enforcing navigational laws, investigating boating accidents, and responding to distress incidents including stranded boaters throughout the waterways of Winnebago County. The unit is comprised of three boats, each with a primary and secondary operator while on patrol. There is a minimum staffing of two boats during the weekends.



Beyond patrol duty, the boats are also used for emergency rescue operations. The Dive Team also uses the boats during the course of their duties. One boat is kept at the Neenah/Menasha Fire Department which is shared with the fire department for their rescue operations.

❖ Snowmobile Patrol

In 2013 the Sheriff's Office reinstituted its Snowmobile Patrol program after a several year hiatus. Snowmobile units patrol the recreational trails and frozen bodies of water throughout Winnebago County. The Department of Natural Resources provides reimbursement to the agency for time spent on enforcement and accident investigation.



Safety Tips

- ✓ Operate at a speed that is reasonable for conditions
- ✓ Be prepared for conditions at hand
- ✓ Know your capabilities and that of the snowmobile
- ✓ Test ice for safety
- ✓ Know your route to avoid unmarked hazards
- ✓ NEVER drink and ride!



❖ K9 Unit



K9 Units are highly trained teams capable of responding to a variety of situations where their skills are essential. The K9's abilities include locating lost persons, school searches, tracking, apprehension, evidence search, narcotics detection, building searches and officer protection.

In 2013 our K9 Units were Jess and Eno. Jess has since retired and Eno will soon be retiring. Below is a sampling of their impressive accomplishments for one year.

<u>K9 Jess & Deputy McMillin</u>	<u>K9 Eno & Deputy Rippl</u>
Money Seized: \$20,773 + 1 Vehicle School/Bldg Searches: 52 Vehicle Searches: 97 Tracks: 9 Other Dept. Assists: 49 Custodial Arrests: 45 Narcotics Seized: 32 Pipes 19 lbs. THC 77 lbs. Heroin 8.7 lbs. Hash	Money Seized: \$196,000 + 2 Vehicles School/Bldg Searches: 73 Vehicle Searches: 97 Tracks: 5 Other Dept. Assists: 42 Custodial Arrests: 2 Narcotics Seized: Various amounts of Paraphernalia and THC

❖ Accident Reconstruction



The Accident Reconstruction Team consists of a Team Leader, an Assistant Team Leader, Re-constructionist, and two assisting deputies. An Assistant District Attorney is also assigned to the Team and the Detective Division is used as necessary.

In fatal accidents or those involving serious injury, the Team has the responsibility of determining the sequence of events that assist in the development of a case.

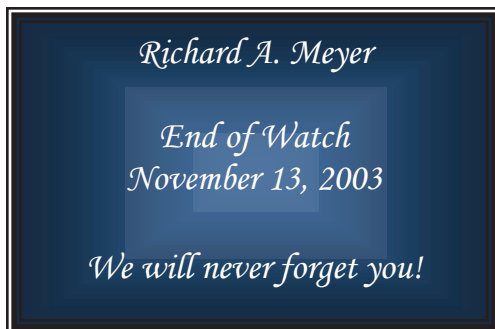
The primary function of the Accident Reconstruction Team is to gather empirical evidence and data which is used in determining if or when criminal charges may be sought. The primary piece of equipment used to capture data is a Total Station which measures and captures distance, vertical angles and horizontal angles.



❖ Honor Guard



The Honor Guard is used for police funerals to include funerals for retirees, Memorial Services relating to Law Enforcement/Public Safety/Veteran Groups, Parades, Posting and Retrieving of Colors, and other ceremonial events.



❖ Community Relations

The Sheriff's Office values its commitment to serving the community. To foster strong relationships with stakeholders, Community Relations Deputies Pete Ehlert and Erica Geschrei regularly engage in educational and community events throughout Winnebago County. Often, this involves work within the schools educating kids in dealing with difficult situations and giving them the tools to become productive citizens as they grow into adults.



We have very active social media accounts. Citizens follow our pages to hear about emergency situations, recent happenings, operational photographs, and various educational efforts. We welcome interaction and comments from the community.

We participated in two International Law Enforcement Tweet-athons during 2013; engaging with police agencies and followers from around the world. Our YouTube page features in-car squad video footage.

Our presence in social media has grown in 2014.....keep watching for more to come.



<https://www.facebook.com/WCSOWisconsin>



<http://www.youtube.com/user/TheWISOchannel>



https://twitter.com/WISO_Wisconsin