

Winnebago County Area Dementia-Related Programs and Supports

Memory Cafes

A memory café is a comfortable, social gathering to allow individuals facing similar experiences with memory loss to connect, socialize and build new support networks in a safe environment. No fee or registration is required. The cafés are for both the individual with the memory impairment and their care partner. Cafés may include music, presentations, activities, or crafts and refreshments.

Oshkosh 20th St YMCA

- 3303 W. 20th Avenue
- Last Monday of each month 1:30-3pm

Oshkosh Public Library

- 106 Washington Avenue
- 2nd Wednesday of each month 1:30-3pm

Neenah Public Library

- 240 E. Wisconsin Avenue
- 3rd Monday of each month 1:30-3pm

Elisha D. Smith Public Library in Menasha

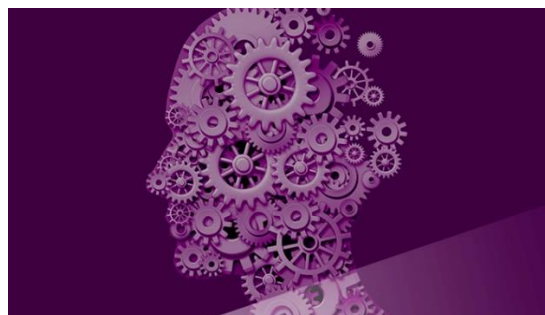
- 440 First Street
- 3rd Wednesday of each month 1:30-3pm

Fox Valley Memory Project (FVMP) hosts memory cafes, social activities and the Memory Link Program throughout the Fox Cities. Contact them at (920) 225-1711 or visit their website for information and events:

<https://www.foxvalleymemoryproject.org/>

RCI REACH Program

Evidence based program to support caregivers of those with memory loss with 1:1 support, education, problem solving and stress management during 12 free sessions over 6 months. Contact Mosaic Family Health 920-997-8407 to register.



Mindworks Program

Mindworks is a facilitated program designed for people with early symptoms of memory loss. The curriculum promotes overall health and wellness, brain health and social connections through classroom activities, community engagement and physical activity. Lunch is provided and the cost is \$10 per session. Contact the Fox Valley Memory Project to register 920-225-1724.

Oshkosh Senior Center

- 200 N Campbell Road
- Thursdays 11am-2pm

Goodwill Community Center

- 1800 Appleton Road, Menasha
- Mondays and Wednesday 11am-2pm
- Tuesday and Thursdays 11am-2pm

Memory Care Respite Program

A free two-hour respite program designed to give a caregiver a break each month. Volunteers and professional caregivers organize arts and crafts, music, and other fun activities to engage the participants. Please call to register for this program.

St. Paul Lutheran Church

- 200 N. Commercial St, Neenah
- 1st and 2nd Mondays of each month 1:30-3:30pm
- RSVP: (920) 383-1180 or email memorycarerespitepartners@gmail.com

Our Savior Lutheran Church

- 1860 Wisconsin St, Oshkosh
- 4th Tuesdays of each month 1:30-3:30pm
- RSVP: (920) 727-5555 ext. 2217

Caregiver Support Groups

Alzheimer's Association Support Groups

www.alz.org/wi

Alzheimer's/Dementia - Bethel Home

- 225 N. Eagle St, Oshkosh
- 1st Thursday of each month at 1:30pm

Caregiver Group- Community Church

- 2351 Ryf Rd, Oshkosh
- 3rd Thursday of each month at 3:30pm

Caregiver Group- Virtual on Zoom

- 2nd Thursday of the month at 3:30pm

Men's Caregiver Group - Café Nutrition

- 1350 West American Drive, Neenah
- 3rd Tuesday of the month at 10:30am

TLC/Caregiver Support Group- Fox Valley Memory Project

- Goodwill Campus in Menasha
- 2nd and 4th Tuesday of each month at 1pm
- Neenah Public Library
- 2nd Thursday of each month at 1pm
- Oshkosh Senior Center
- 3rd Thursday of the month at 1pm

Family Caregiver Support Group- Mosaic Health

- 229 S. Morrison St, Appleton
- 3rd Wednesday of the month 10am-11:30am



SPARK!

Spark! is a cultural program for individuals with early-to-mid-stage memory loss and their care partners. The program is designed to help everyone actively engage in their community while experiencing art, culture, and nature in a comfortable environment with specially trained staff and volunteers.

The Paine Art Center

- 1410 Algoma Blvd, Oshkosh
- Last Wednesday of each month at 1pm
- (920) 235-6903

Bergstrom-Mahler Museum of Glass


- 165 N. Park Ave, Neenah
- 2nd Tuesday of each month at 10:30am
- (920) 751-4658

Trout Museum of Art

- 111 W College Ave, Appleton
- 2nd Monday of the month at 1pm
- (920) 733-4089



View the ADRC website for a calendar of events:
<https://www.co.winnebago.wi.us/adrc/dementia-and-alzheimer-resources/event-calendar/month>

Like us on 

Contact Alisa Richetti, Dementia Care Specialist with the Aging & Disability Resource Center (ADRC) of Winnebago County for more information on resources and programs:

(920) 236-1227

arichetti@co.winnebago.wi.us

