



**Public Health**  
Prevent. Promote. Protect.

**Winnebago County  
Health Department**

# Winnebago County Health Department COVID-19 Weekly Data Summary

July 1, 2021

## Summary

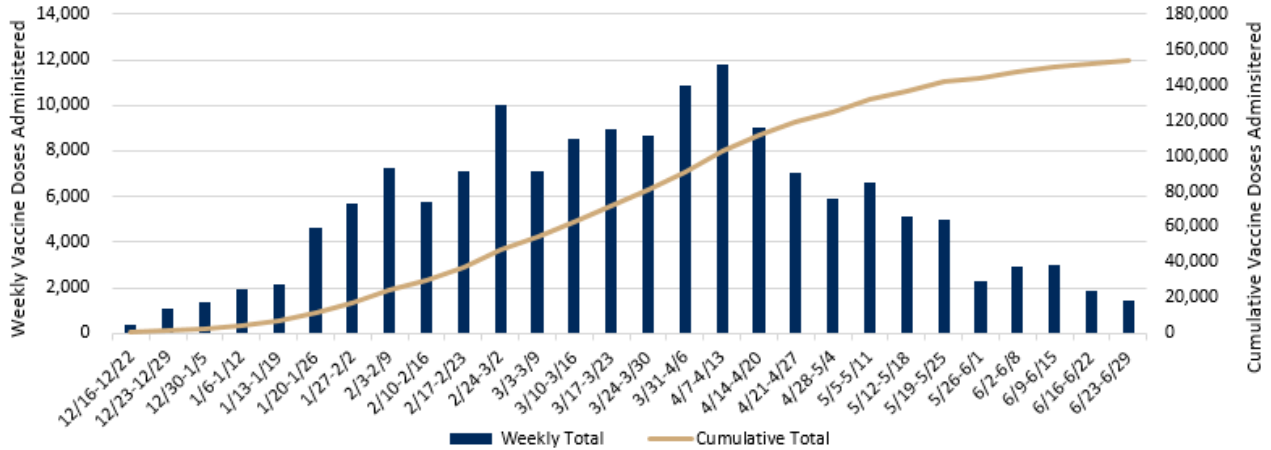
- Vaccination and prevention efforts remain critical to keep our case counts low. Although we have seen a significant decline in cases, the threat still remains that cases could increase if we don't increase vaccination rates enough. We are in a window of opportunity right now to prevent further cases, hospitalizations and deaths related to COVID-19 through vaccination. You and those around you are safest if you are vaccinated. Let's keep cases low by helping everyone eligible get vaccinated.
- WI DHS has indicated increased circulation of [non-COVID respiratory viruses](#) in Wisconsin. Everyday actions that prevent the spread of COVID-19, can also prevent the spread of other respiratory illnesses. Wash your hands often with soap and water, cover coughs and sneezes, and stay home when you are sick. People who have symptoms should stay home to prevent the potential spread of illness, especially in summer camps, child care programs, long-term care facilities, and other settings where close contact is likely.
- Throughout the COVID-19 pandemic, the number of cases, burden rate, testing numbers, percent positivity, hospitalizations, and deaths have been useful indicators of the current situation.
  - Over the past two weeks, we have reported a total of 19 confirmed + probable cases.
  - The confirmed + probable case burden is moderate for our jurisdiction. The confirmed + probable case rate over the past 2 weeks for our jurisdiction is 12.5 cases per 100,000 people, a 37% decrease from the case rate of 19.5 cases per 100,000 people reported last week.
  - There are at least 233 PCR tests being performed every day in our jurisdiction.
  - Over the past two weeks, 0.4% of PCR tests were positive in our jurisdiction.
  - There are currently 2 COVID-19 patients hospitalized in Fox Valley Area hospitals.
  - The last confirmed COVID-19 death occurred one month ago.
  - The delta variant is increasing and more likely to cause cases in groups of unvaccinated persons.
- Current COVID-19 activity level is indicated as [medium](#) for Winnebago County based on a moderate burden and relatively flat trajectory of cases over the past two weeks. As long as the virus is still circulating, *children under the age of 12 and all other unvaccinated individuals are still at risk of getting COVID-19.*
  - Help protect our community by getting the COVID-19 vaccine and continue to [wear a mask](#) if unvaccinated and where masks are required.
- Vaccines are available any day of the week at a [site near you](#). A [regional COVID-19 vaccine tour](#) will be occurring throughout the summer with vaccine clinics being held throughout Winnebago, Calumet and Outagamie counties. Visit [www.wcvaccine.org](http://www.wcvaccine.org) to find answers to your questions about the vaccine and see where you can get vaccinated.
  - Of Winnebago County residents aged 12 or older, 55.3% have received at least one dose of the COVID-19 vaccine. An overlapping one-third of residents have some immunity from being infected already.
  - Everyone [12 and older](#) is eligible to receive the COVID-19 vaccine. *Pfizer is the only vaccine currently approved for 12- to 17-year olds.* Not [all locations](#) administer vaccines to those under 18, and not all locations carry Pfizer.
- COVID-19 testing remains an important tool in keeping the virus from spreading to those who are unvaccinated. Get a COVID-19 test if you have symptoms, were exposed to the virus, or feel you need a test even though you don't have symptoms.
  - Testing resources are plentiful, and the CDC encourages widespread testing to identify asymptomatic cases so measures can be taken to avoid the spread of COVID-19.
  - [Sunnyview Expo Center](#) PCR test results have a quick turnaround. [Visit our website](#) for a full list of testing locations in Winnebago County.

## COVID-19 Vaccination Data

As of 6/30/2021, **5,451,677 doses** of the [COVID-19 vaccine](#) have been administered to Wisconsin residents with 50.2% of the Wisconsin population having received at least one dose of the COVID-19 vaccine and 46.9% of the Wisconsin population have completed the vaccine series.

As of 6/30/2021, **153,442 doses** of [COVID-19 vaccine](#) have been administered to Winnebago County residents with 48.4% of the county population having received at least one dose of the COVID-19 vaccine and 45.6% of the county population have completed the vaccine series. Of Winnebago County residents aged 12 or older, 55.9% have received at least one dose of the COVID-19 vaccine.

Cumulative and Weekly Number of COVID-19 Vaccine Doses Administered to Winnebago County Residents (12/16/2020-6/29/2021)



This table shows the number and percent of Winnebago County residents who have received at least one dose of the COVID-19 vaccine by demographic breakdown. Data will differ slightly from what is posted on the [DHS website](#) due to differences in population estimates used and because the data is extracted at a different time of day.

		Number	Percent	Population*			Number	Percent	Population*
Ethnicity	Hispanic or Latino	2,314	33.0%	7,017	Sex	Female	44,328	52.4%	84,556
	Not Hispanic or Latino	76,916	47.1%	163,394		Male	37,886	44.1%	85,855
	Unknown	3,237				Unknown	253		
Race	American Indian or Alaska Native	432	42.8%	1,010	Age Group	12-15	2,249	28.2%	7,974
	Asian	2,422	51.0%	4,748		16-17	1,579	38.5%	4,103
	Black or African-American	967	25.0%	3,874		18-24	5,951	29.0%	20,491
	Native Hawaiian or Other Pacific Islander	100	77.5%	129		25-34	9,773	43.5%	22,442
	Other Race	2,365	55.1%	4,291		35-44	11,050	54.9%	20,144
	White	72,097	46.1%	156,359		45-54	11,833	52.8%	22,390
	Unknown	4,084				55-64	15,854	69.4%	22,846
						65-74	14,037	93.3%	15,050
				75+	10,140	84.8%	11,964		

\*Age Group Population Data comes from the [2019 census](#). Population sizes used in this table are for all of Winnebago County, not just the jurisdiction of Winnebago County Health Department. Population sizes will differ from population sizes used elsewhere in these reports.

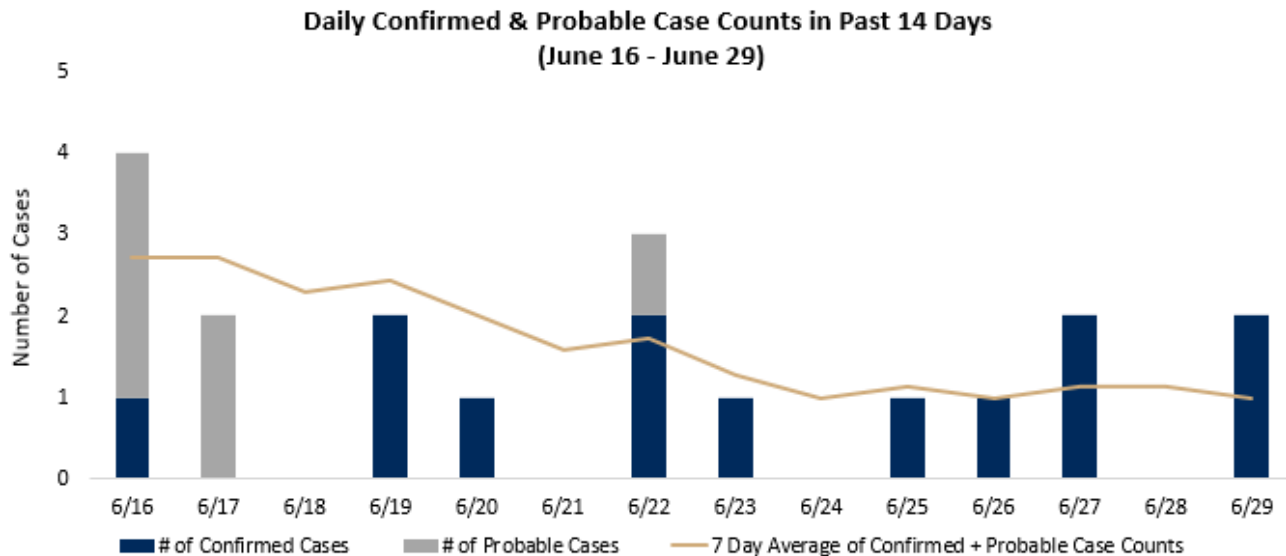
## Reported Case Counts

	Case Counts for the Past 14 Days 6/16/2021-6/29/2021	Cumulative Case Counts 3/9/2020-6/30/2021
<b>Confirmed Cases</b>	13	15,234
<b>Active Cases</b>		12 (<0.1% of cumulative cases)
<b>Recovered Cases</b>		15,054 (99% of cumulative cases)
<b>Probable Cases</b>	6	2,874
<b>Negative Cases</b>	905	90,471
<b>Deaths**</b>	0	194
<b>Among Confirmed Cases</b>	0	169
<b>Among Probable Cases</b>	0	25

\*\*Death certificate must list COVID-19 (or the virus causing COVID-19) as a cause of death or a significant condition contributing to death. Healthcare providers and/or coroner determines cause of death. Data includes COVID deaths among PCR confirmed cases and probable cases.

## Case Count by Day – Last 2 Weeks

When there is adequate testing in place, trending daily case counts show if the disease is spreading or shrinking and the overall burden of disease in our area. This graph shows the number of confirmed cases by test result date and probable cases by the date their case file was created. **There was an average of 1.4 confirmed and probable cases per day, which is a decrease from the 2.1 confirmed and probable cases per day reported last week. Total daily confirmed and probable case counts ranged from 0 to 4 cases.** There was an average of 0.9 confirmed cases per day, which is a decrease from the 1.4 cases per day reported last week. There was an average of 0.4 probable cases per day, which is a decrease from the 0.8 probable cases per day reported last week. The trend line shows the 7-day average for the combined total of confirmed and probable cases. For a full disease curve, see the [dashboard](#) on our [website](#).



Daily confirmed case counts presented here may differ from our situation update and the cases by day graph reported on our dashboard. This chart reflects the test result date instead of the date when the results are actually received by the health department.

A person is counted as a confirmed COVID-19 case if they had a positive test result using a confirmatory diagnostic test that detects the genetic material of SARS-CoV-2, the virus that causes COVID-19 (polymerase chain reaction (PCR) tests or nucleic acid amplification tests (NAT)). Reasons a person could be counted as a probable case include: a positive antigen test, positive antibody test, or diagnosis due to symptoms and known exposure to COVID-19.

## Burden Status

Burden status is the total number of reported cases per 100,000 residents in the last two weeks.

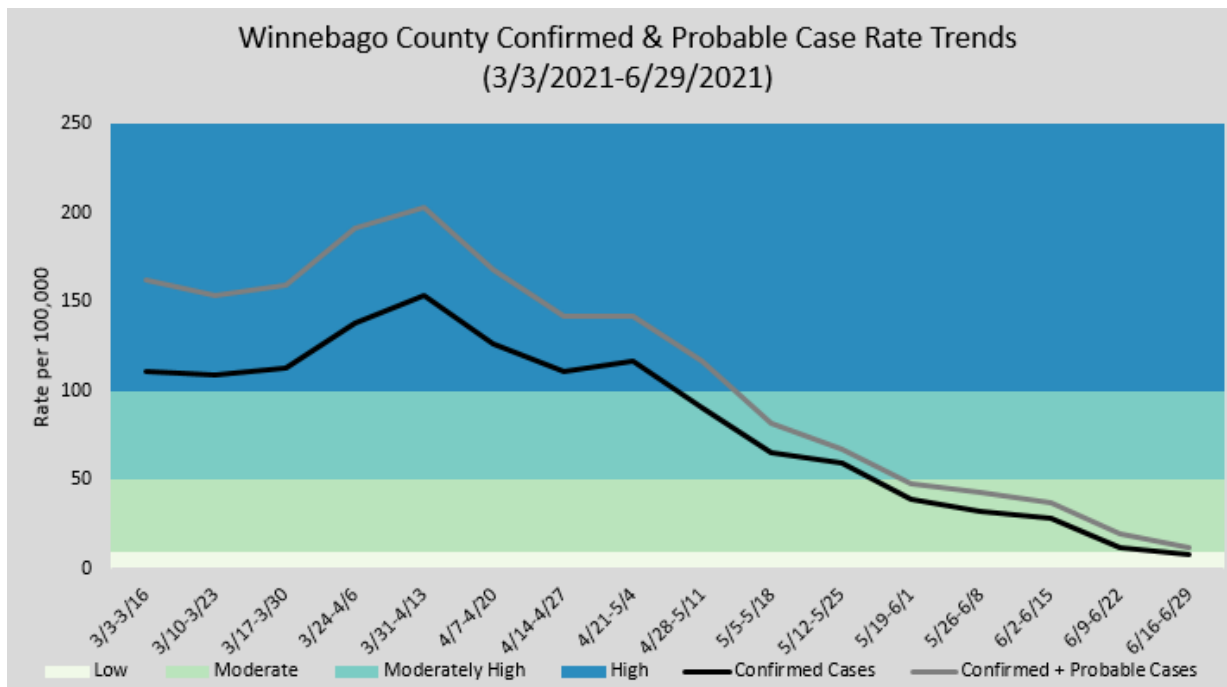
Dates	Confirmed Cases	Probable Cases	Total (Confirmed + Probable)
6/16-6/22	6	6	12
6/23-6/29	7	0	7
Total for last two weeks	13	6	19
<b>Case rates for last two weeks (per 100,000 population)</b>	<b>8.5</b>	<b>3.9</b>	<b>12.4</b>

Burden Status	Case Rate per 100,000 residents in the past two weeks	Number of Cases in the past two weeks
<b>Low</b>	Case rate is less than or equal to 10.	Less than 15 cases or about 1 case per day.
<b>Moderate</b>	Case rate is greater than 10, but less than or equal to 50.	Greater than 15 cases, but less than or equal to 77 cases or less than 6 cases per day.
<b>Moderately High</b>	Case rate is greater than 50, but less than or equal to 100.	Greater than 77 cases, but less than or equal to 154 cases.
<b>High</b>	Case rate is greater than 100, but less than or equal to 350.	Greater than 154 cases, but less than or equal to 538 cases.
<b>Very High</b>	Case rate is greater than 350, but less than or equal to 1,000.	Greater than 538 cases, but less than or equal to 1,537 cases.
<b>Critically High</b>	Case rate is greater than 1,000.	Greater than 1,537 cases.

Case rate is determined by number of new confirmed cases in a particular group (such as an age group) during the past two weeks, divided by the population of that particular group, multiplied by 100,000. View the [DHS COVID Local Activity Level](#) page to learn more about burden status.

## Biweekly Confirmed & Probable Case Rate Trends

The graphs below show confirmed case rate per 100,000 people and the confirmed + probable case rate per 100,000 people for the Winnebago County Health Department Jurisdiction. These case rates are based on confirmed and probable case counts during a two-week time span.

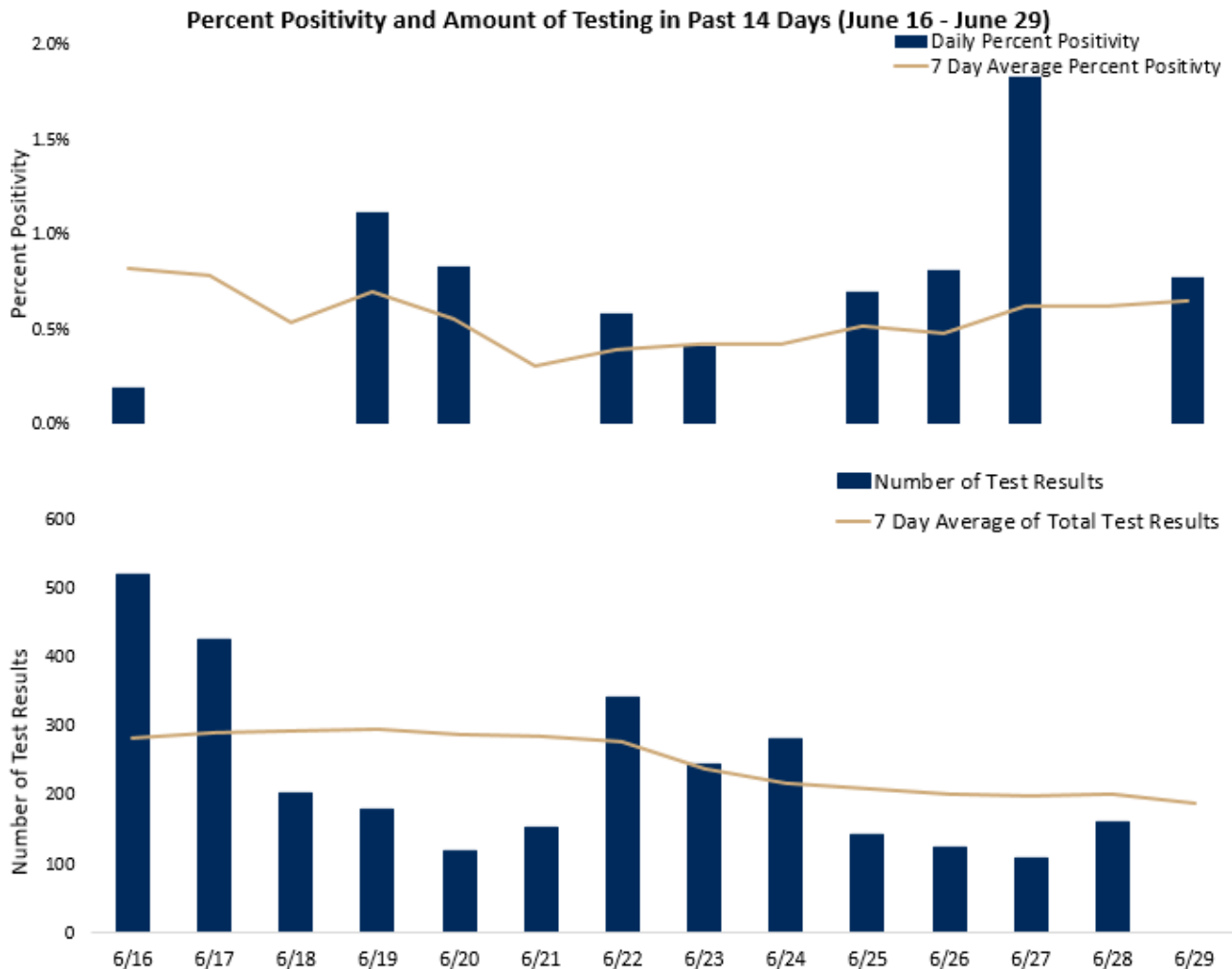


## Amount of Testing and Percent Positivity

Adequate testing capacity and utilization are necessary for identification of active infections of COVID-19, and investigations into those positive cases helps prevent the spread of the virus. Higher disease activity requires more testing to identify and isolate enough infected people to slow the spread. The percent positivity helps determine if there is adequate testing. A high percent positivity may indicate an inadequate amount of testing, which limits the number of identified cases and subsequent contact tracing used to help reduce the spread of the virus. Our current goal is to have enough testing to keep the percent positivity below 5%. View the [DHS COVID Local Activity Level](#) page to see percent positivity for the state, counties, and regions.

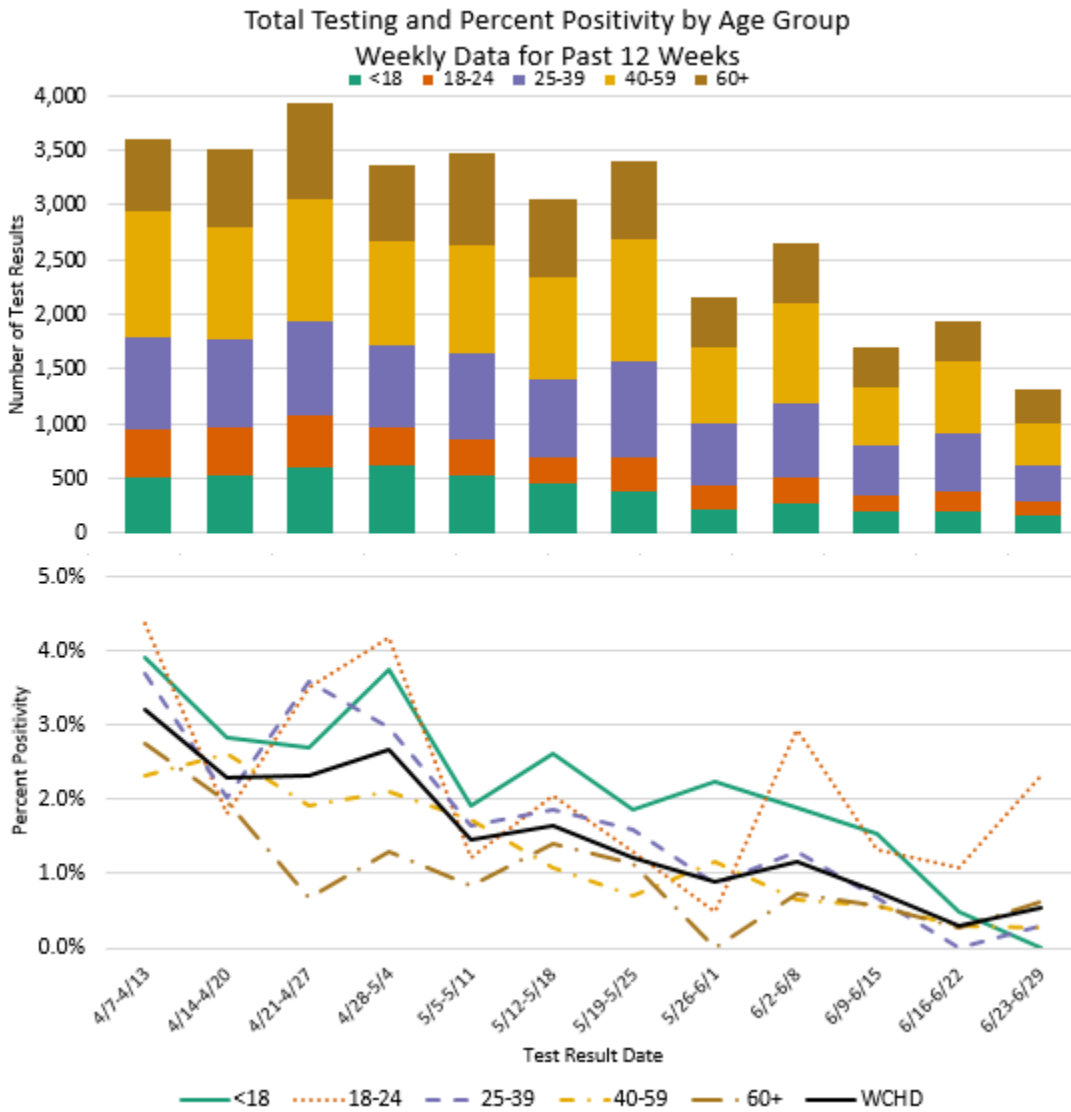
Over the past two weeks, **0.4% of PCR tests were positive**, which is a slight decrease from the 0.5% positivity reported last week. Daily positivity ranged from 0.0% to 1.8%. Over the past two weeks an **average of 233 PCR tests** were conducted each day among residents within the Winnebago County Health Department jurisdiction. Antigen tests are not included in the testing numbers or the percent positivity calculation. A PCR confirmed case is only counted once in the percent positivity calculation, meaning a person with multiple positive PCR tests only counts as one confirmed case.

[Testing](#) is available at the [regional COVID-19 testing site](#) at Sunnyview Expo Center in Oshkosh as well as other locations including [CVS pharmacies](#) and multiple community test sites in [Oshkosh](#), [Neenah](#), and [Appleton](#).



## Amount of Testing and Percent Positivity by Age Group

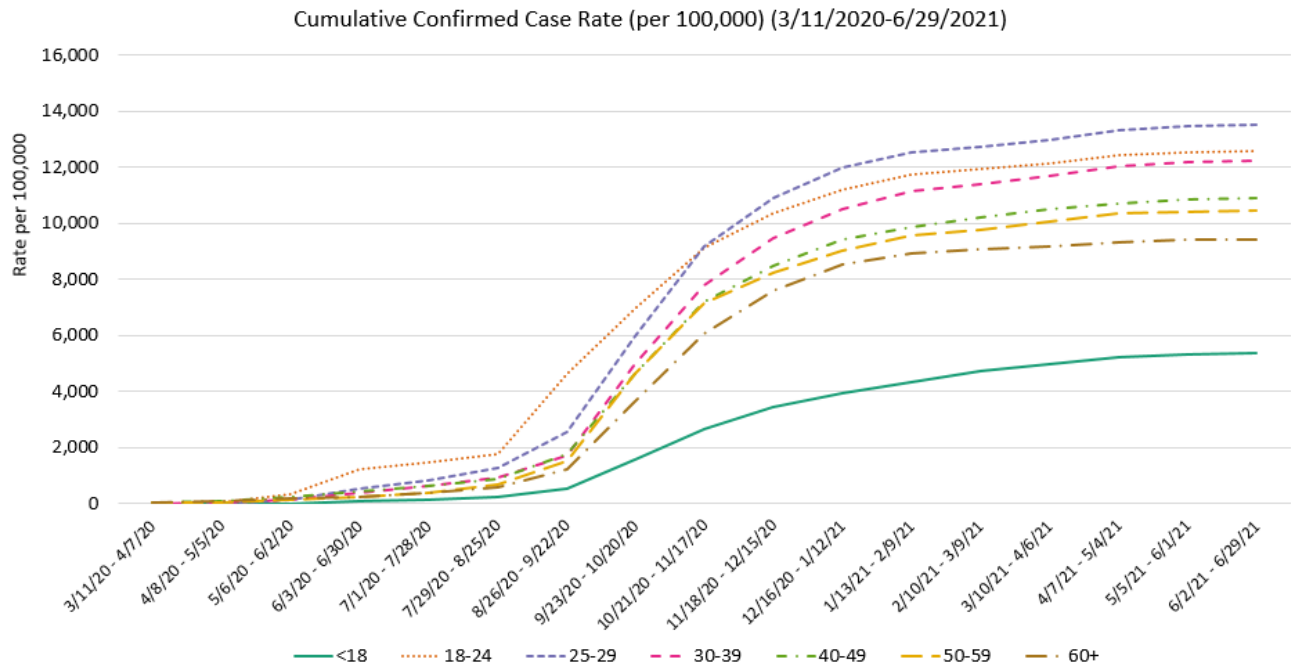
The figures below show the percent positivity and total testing numbers by age group. Antigen tests are not included in the testing numbers or the percent positivity calculation. A PCR confirmed case is only counted once in the percent positivity calculation, meaning a person with multiple positive PCR tests only counts as one confirmed case. **Over the past week**, individuals aged 18-24 had the highest percent positivity (2.3%) and individuals aged <18 had the lowest testing rate (537 tests per 100,000 individuals aged <18).



6/23/21-6/29/21	<18	18-24	25-39	40-59	60+	Total
Percent Positivity	0.0%	2.3%	0.3%	0.3%	0.6%	0.5%
Testing Rates per 100,000 population	537	675	1,115	913	998	864
Number of Tests	116	129	328	375	323	1,321
Population	30,928	19,108	29,405	41,095	32,359	152,895

## Trending by Age Group

This graph shows how cumulative confirmed case rates by age group have changed over time. Cumulative case rates will always trend upward; it is the rate of increase in that trend that helps us understand what populations are being impacted the most.



This table shows the case count and case rate by age group for the past two weeks and cumulatively. In the past two weeks, 5 of the 13 PCR confirmed cases were among the 18-24 age group.

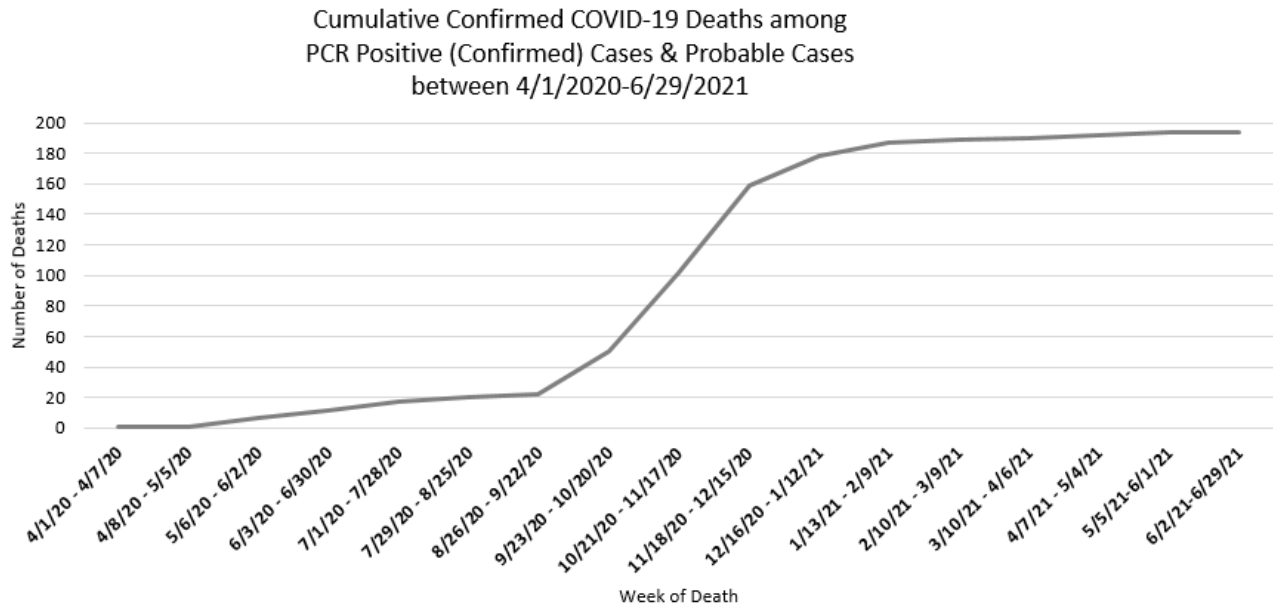
Age Group	Past Two Weeks (6/16/21-6/29/21)		Cumulative Confirmed Case Count	Population***
	Case Count	Case Rate (per 100,000)		
<18	1	3.2	1,664	30,928
18-24	5	26.2	2,406	19,108
25-29	0	0.0	1,370	10,132
30-39	1	5.2	2,360	19,273
40-49	1	5.5	1,994	18,269
50-59	2	8.8	2,384	22,826
60+	3	9.3	3,056	32,359

\*\*\*Age Group Population Data comes from the [2018 census](#). Total Population size across all age groups (152,895) differs slightly from total population size used to calculate Winnebago County Health Department jurisdiction case rate (153,748) which was determined using 2020 population data from the [WI Department of Administration](#).

## Confirmed COVID-19 Deaths

Confirmed COVID-19 deaths include deaths among PCR confirmed cases and probable cases. Confirmed COVID-19 deaths have a death certificate that lists COVID-19 disease or SARS-CoV-2 as a cause of death or a significant condition contributing to death. Healthcare providers or medical examiners/coroners determine cause of death. Public reporting of COVID-19 deaths lag while waiting for confirmation.

In the graph below, the data for recent weeks is preliminary and subject to change. Recent deaths are still pending as we await confirmation on cause of death.



These tables show case counts for confirmed COVID-19 deaths by age group and housing type, as well as by ethnicity, race, and sex.

All Confirmed COVID-19 Deaths by Age Group and Housing Type					
Age Group	Not Group	LTCF/ Group	Total Deaths	Rate per 100,00	Population
<60	18	1	19	15.8	120,536
60-69	22	7	29	175.9	16,491
70-79	30	14	44	458.6	9,594
80-89	34	31	65	1,625.8	6,274
90+	9	28	37		
<b>Total</b>	<b>113</b>	<b>81</b>	<b>194</b>	<b>126.9</b>	<b>152,895</b>

All Confirmed COVID-19 Deaths by Ethnicity, Race, and Sex		
Ethnicity	Hispanic/Latino or Unknown	12
	Not Hispanic/Latino	192
Race	Other or Unknown	14
	White	179
Sex	Female	78
	Male	116

**Long-term care facility (LTCF):** nursing homes, assisted living facilities

**Group housing facility:** Group housing facilities include city and county jails, homeless shelters, dormitories and group homes. Deaths among those living in Wisconsin Department of Corrections facilities (including Oshkosh Correctional Institute) are not included here.

**Not group housing facility:** single family homes, apartments, condos, duplexes or townhouses



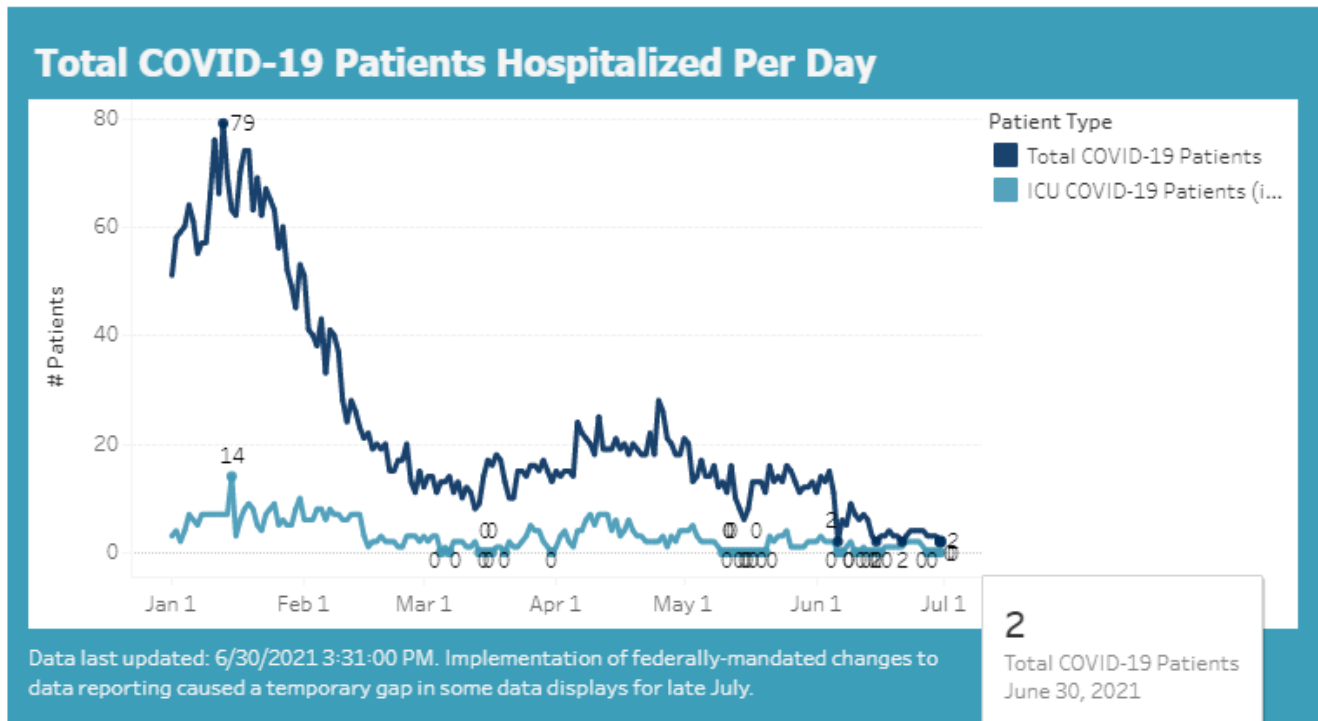
## Healthcare Measures for the Fox Valley Area

The Fox Valley Area HERC Region includes Calumet, Green Lake, Menominee, Outagamie, Shawano, Waupaca, Waushara and Winnebago Counties.

It is vital that healthcare systems have adequate capacity to manage patient care in the context of a surge caused by COVID-19. Through adequate testing, case identification and investigation we can help keep case counts at levels that are manageable by our healthcare systems. When healthcare systems exceed their capacity, the ability to treat severe illness is compromised and patients do worse and/or do not get the care they need to survive the illness.

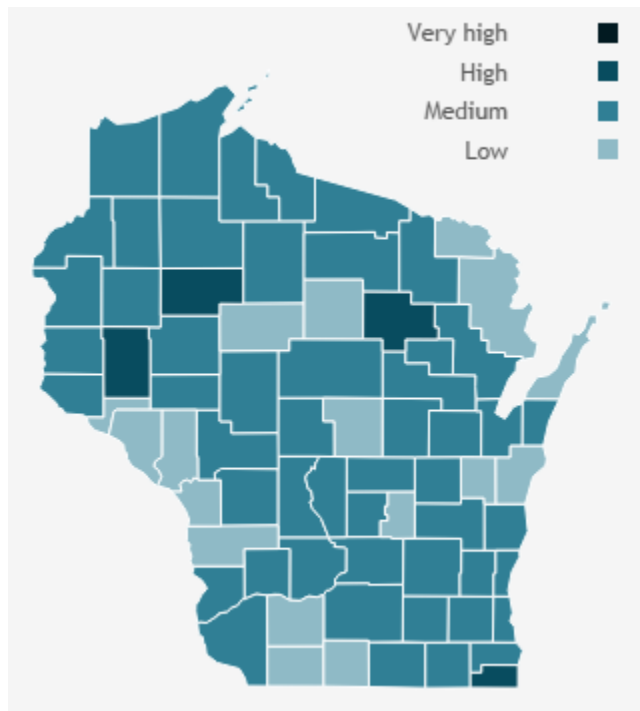
As of 6/30/2021, there were 2 **COVID-19 patients hospitalized** in the Fox Valley Area hospitals with 0 of those patients in the ICU.

To view more information on healthcare measures in the Fox Valley Area and across the state, please visit <https://www.wha.org/COVID19Update> and <https://www.dhs.wisconsin.gov/covid-19/hosp-data.htm>



## Burden, Trajectory, and Activity Level Across Wisconsin in Past 14 Days

Updated 6/30/2021



The Wisconsin Department of Health Services classifies regions and counties as critically high, very high, high, medium, or low activity levels for COVID-19 spread by combining the case burden (case rate) and trajectory (change in cases over time) indicators. The state updates this information weekly on Wednesdays by 5 p.m. As of June 30, 2021, Winnebago County\*\*\*\* and the Fox Valley Region are classified as having a **medium COVID-19 activity level**.

To view more information on these metrics, please visit <https://www.dhs.wisconsin.gov/covid-19/local.htm>

Area	Confirmed + Probable Case Count (Past 14 days)	Burden	Trajectory	Activity Level	Percent Positive (Past 7 Days)
Winnebago	26	15.4 Moderate	N/A ↔	Medium <span style="color: #00728f;">■</span>	0.7%
Fox Valley Area	97	17.8 Moderate	N/A ↔	Medium <span style="color: #00728f;">■</span>	0.8%
Outagamie	25	13.6 Moderate	N/A ↔	Medium <span style="color: #00728f;">■</span>	1.0%
Wisconsin	1,298	22.5 Moderate	N/A ↔	Medium <span style="color: #00728f;">■</span>	0.9%

A trajectory of N/A means there was no significant change in the percent change in cases for this week compared to the previous week.

\*\*\*\*This data is provided by the [Department of Health Services](#) and may be different than the information provided by WCHD because the state reports data for the entire county, which includes the portions of Winnebago County that fall within the jurisdiction of the [City of Menasha Health Department](#) and [City of Appleton Health Department](#).

## Background Information

This report provides *preliminary* data on confirmed COVID-19 cases from June 16, 2021 – June 29, 2021. A person is counted as a **confirmed** COVID-19 case if they had a **positive confirmatory laboratory test** (for example, polymerase chain reaction (PCR) tests or nucleic acid amplification tests (NAT) that detect genetic material of SARS-CoV-2, the virus that causes COVID-19). Antigen positive tests are counted as **probable** cases.

Dates utilized for all graphs and tables are based on test result date and may not represent final reported case counts. Data may be underreported for recent days because results can take multiple days to be reported to the health department. This means the number of tests and percent positivity may change in next week's report. As this is a weekly report for the past 14 days, there will always be a week of overlap between reports.

\*The COVID-19 data provided in this report is specific to the Winnebago County Health Department (WCHD) jurisdiction (population: 153,748). It does not include the portions of Winnebago County that fall within the jurisdiction of the [City of Menasha Health Department](#) and [City of Appleton Health Department](#). As of October 3, 2020, data reports from the Winnebago County Health Department do not include test results from residents in Wisconsin Department of Corrections facilities, which includes the Oshkosh Correctional Institute. This data can be found on the Wisconsin Department of Corrections [website](#).

Data provided on the [Department of Health Services website](#) may be different than information provided by WCHD because the state reports data for the entire county based on address, which includes those portions of Menasha and Appleton as well as the correctional facilities.

### **For additional Winnebago County Health Department COVID-19 information:**

- [WCHD COVID-19 Webpage](#)
- [Municipality Weekly Data Summaries](#)
- [School District Weekly Data Summaries](#)
- [Trend Data Graphs](#)