



Public Health
Prevent. Promote. Protect.

**Winnebago County
Health Department**

Winnebago County Health Department COVID-19 Trend Graphs from Data Summaries

May 6, 2021

Background Information

Graphs in the weekly data summaries have been shortened to show the most recent data. Select graphs and data spanning the entirety of the COVID-19 pandemic can be found in this document. Please see the weekly data summaries for data on the past two weeks. **A person is counted as a confirmed COVID-19 case if they had a positive confirmatory laboratory test (for example, polymerase chain reaction (PCR) tests or nucleic acid amplification tests (NAT) that detect genetic material of SARS-CoV-2, the virus that causes COVID-19). Antigen positive tests are counted as probable cases.**

Dates utilized for all graphs and tables are based on test result date and may not represent final reported case counts. Data may be underreported for recent days because results can take multiple days to be reported to the health department.

*The COVID-19 data provided in this report is specific to the Winnebago County Health Department (WCHD) jurisdiction (population: 153,748). It does not include the portions of Winnebago County that fall within the jurisdiction of the [City of Menasha Health Department](#) and [City of Appleton Health Department](#). As of October 3, 2020, data reports from the Winnebago County Health Department do not include test results from residents in Wisconsin Department of Corrections facilities, which includes the Oshkosh Correctional Institute. This data can be found on the Wisconsin Department of Corrections [website](#).

Data provided on the [Department of Health Services website](#) may be different than information provided by WCHD because the state reports data for the entire county based on address, which includes those portions of Menasha and Appleton as well as the correctional facilities.

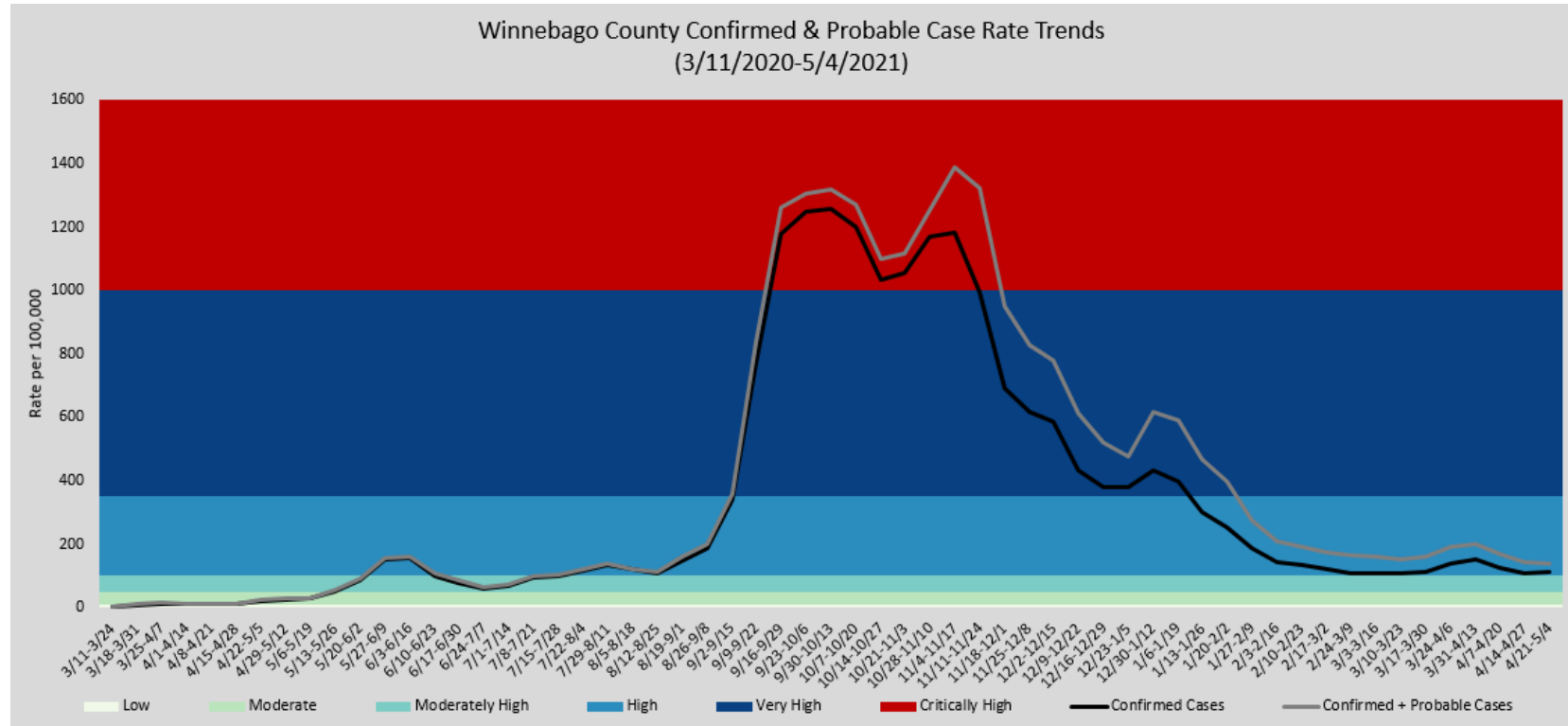
For additional Winnebago County Health Department COVID-19 information:

- [WCHD COVID-19 Webpage](#)
- [General Weekly Data Summaries](#)
- [School District Weekly Data Summaries](#)
- [Municipality Weekly Data Summaries](#)
- [Trend Data Graphs](#)

General Weekly Data Summary

Biweekly Confirmed & Probable Case Rate Trends

The graphs below show confirmed case rate per 100,000 people and the confirmed + probable case rate for the Winnebago County Health Department Jurisdiction. These case rates are based on confirmed and probable case counts during a two-week time span.



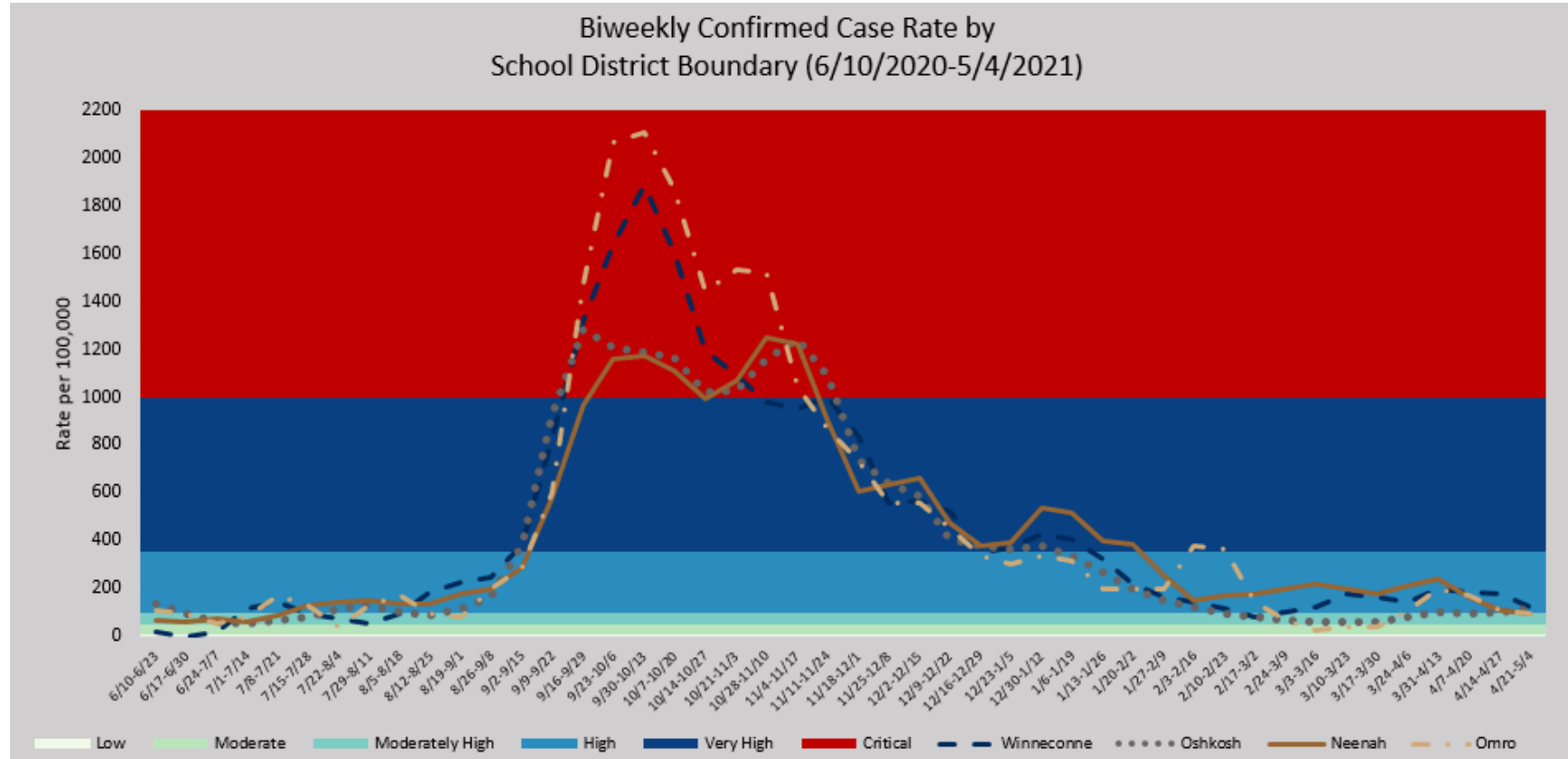
Burden Status	Case Rate per 100,000 residents in the past two weeks
Low	Case rate is less than or equal to 10.
Moderate	Case rate is greater than, but less than or equal to 50.
Moderately High	Case rate is greater than 50, but less than or equal to 100.
High	Case rate is greater than 100, but less than or equal to 350.
Very High	Case rate is greater than 350, but less than or equal to 1,000.
Critically High	Case rate is greater than 1,000.

Case rate is determined by number of new confirmed cases in a particular group (such as an age group) during the past two weeks, divided by the population of that particular group, multiplied by 100,000. View the [DHS COVID Local Activity Level](#) page to learn more about burden status.

School District Weekly Data Summary

Confirmed Cases by School District Geographic Boundary

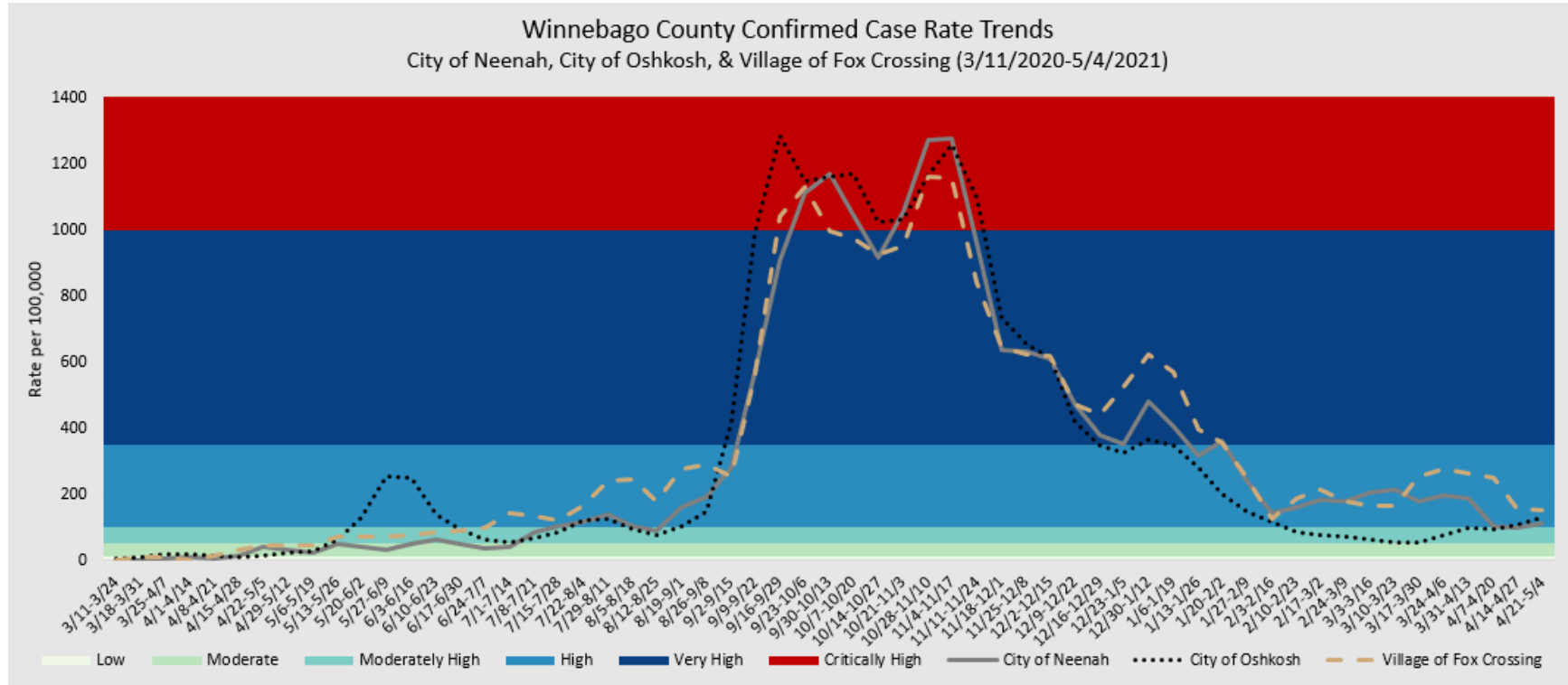
Data by school district geographic boundary may differ from data provided by the respective school district. School district geographic boundaries are the geographic area from which children are **eligible** to attend a certain school district. Data by school district geographic boundary includes cases among all individuals that live within that boundary regardless of age or where they attend school. Data is only available starting the week of June 10, 2020 and going forward.



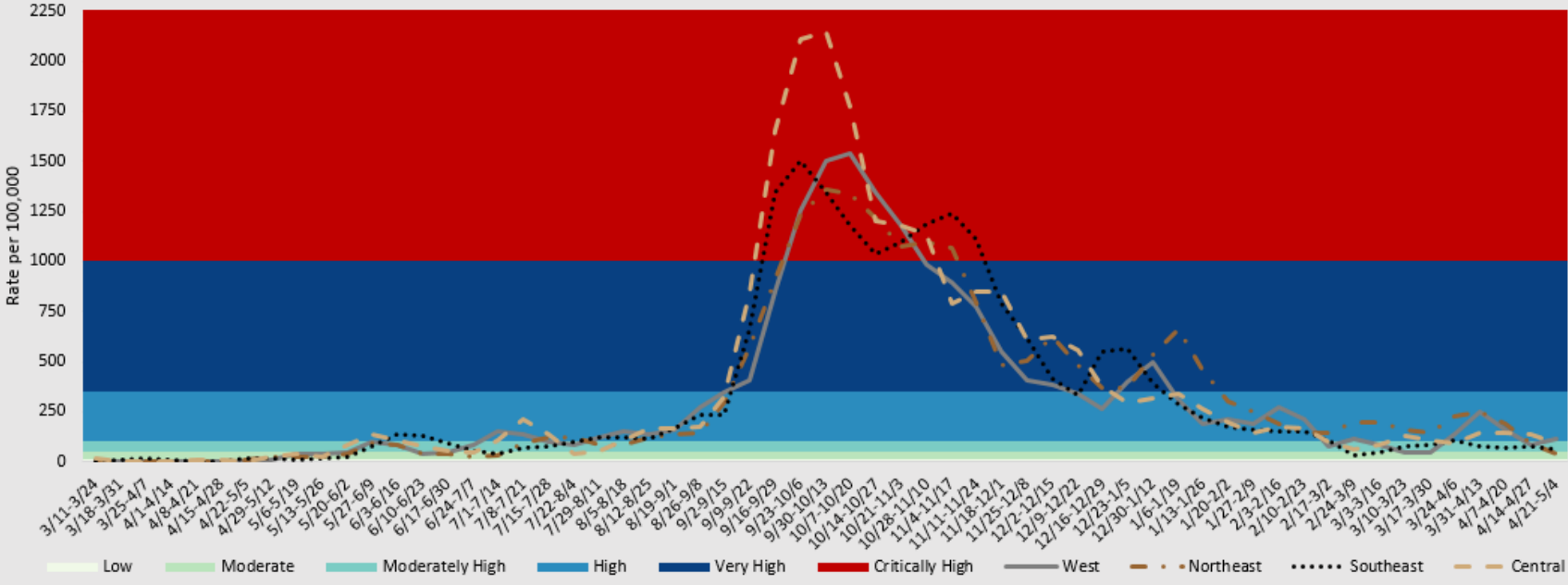
Municipal Weekly Data Summary

Confirmed Case Rate Trends by Municipality

The graphs below show confirmed case rate per 100,000 people by municipalities. These case rates are based on confirmed case counts during a two-week time span.



Winnebago County Confirmed Case Rate Trends by Region
(3/11/2020-5/4/2021)



Due to population size, the smaller municipalities were grouped together into the following rural regions

- West: Towns of Nepeuskun, Poygan, Rushford, Utica, Winchester, and Wolf River
- Northeast: Towns of Clayton, Neenah, and Vinland
- Southeast: Towns of Algoma, Black Wolf, Nekimi, and Oshkosh
- Central: City of Omro, Towns of Omro & Winneconne, and Village of Winneconne