



Public Health
Prevent. Promote. Protect.

**Winnebago County
Health Department**

Winnebago County Health Department

COVID-19 Data by School District Geographic Boundary

March 11, 2021

Summary

- The Wisconsin Department of Health Services (DHS) [announced today](#) that people age 16 and older with certain medical conditions will be eligible for the COVID-19 vaccine beginning March 29. You can view details regarding the next eligible group on the [DHS website](#).
- While it is very exciting that there are now three COVID-19 vaccines available, it may still take months before we have enough people vaccinated to reach an adequate level of community immunity. It is important to continue to practice COVID-19 prevention measures including staying home, wearing a mask, social distancing and practicing good hand hygiene. When you do get vaccinated, please see these [tips](#).
- Know your status. Anyone who feels they need to be tested, should get [tested](#). At-home [specimen collection kits](#) are available at no cost to Wisconsinites, regardless of symptoms or exposure. Case rates may be improving, but they are still considered high. Any respiratory illness should be a suspected COVID-19 case. Most PCR results are returned within 24-36 hours. Antigen testing is available at the [UWO Culver Welcome Center](#) with antigen results available in about 20 minutes. The Culver Center also provides PCR confirmation testing. If you have been tested, stay home until you receive your test results and [follow this guidance](#).
- As kids return to in-person school, sports, and other extracurricular activities, we strongly encourage families to [get tested](#) for COVID-19, so we can keep our schools and sports open! Social distance, wear masks and do not host or participate in team social gathering events.
- [On March 1st](#), education staff and staff in *licensed* child care settings were among the groups added to the [eligible population](#) to receive the COVID-19 vaccine. If you fall within the currently eligible population, please connect with your employer regarding the vaccination plans for their employees. It will take weeks to fully vaccinate all the population currently eligible; please be patient and see [our website](#) for updates and vaccine clinic locations. *Being eligible does not mean vaccine is available right now.*
- As of March 10, **52,833** COVID-19 vaccine doses have been administered to Winnebago County residents that are [currently eligible](#) to receive the vaccine, and **1,743,880** doses of COVID-19 vaccine have been administered to Wisconsin residents.
- **Our confirmed + probable case burden remains high and relatively unchanged over the past few weeks.** The confirmed + probable case rate over the past 2 weeks for our jurisdiction is 165.9 cases per 100,000 people, a slight decrease from 173.7 cases per 100,000 reported last week. The number of cases (confirmed/probable) in the first week of this 2-week timeframe was 83/41 and for this most recent week is 83/48.
- Individuals under 18 had the highest PCR confirmed case rates of 168.1 per 100,000. Rates are lowest in those aged 60+ (52.5 per 100,000).
- There are currently 10 COVID-19 patients hospitalized in the Fox Valley.
- There has been a total of 182 confirmed COVID-19 deaths among confirmed and probable cases.
- Over this past week, 2.2% of [PCR tests in Wisconsin](#) were positive, 2.5% of PCR tests across all of Winnebago County were positive, and 2.4% of PCR tests across Winnebago County Health Department jurisdiction were positive. Over the past two weeks, 2.1% of PCR tests were positive in our jurisdiction. Many people with symptoms are only receiving antigen tests, which are excluded from the percent positivity calculation and likely leads to artificially lower percentages.
- Over the past two weeks, a daily average of 558 PCR tests were conducted among residents within the Winnebago County Health Department jurisdiction.
- We have shortened the timespan on certain graphs in our weekly data summaries. When visiting our [website](#), select 'COVID-19 Trend Graphs' to view data trends for the duration of the pandemic.

Confirmed Cases by School District Geographic Boundary for the Past Two Weeks (February 24 – March 9)

There have been 154 new confirmed cases reported in the past two weeks within the geographic boundaries of the Neenah, Omro, Oshkosh, and Winneconne School Districts. An additional 12 confirmed cases reported were within the geographic boundaries of other school districts that only partially fall within our jurisdiction.

School District	Case Count for past 2 weeks	Case Rate (per 100,000)	Burden**	Population***
Neenah Joint School District Area	88	197.3	High	44,601
Omro School District Area	5	65.0	Moderately High	7,697
Oshkosh Area School District Area	51	63.4	Moderately High	80,408
Winneconne School District Area	10	103.1	High	9,701
Winnebago County Health Department Jurisdiction	166	108.0	High	153,748
Winnebago County	200	118.1	High	169,926
Wisconsin	6,666	115.3	High	

**Burden is based off of the case rate per 100,000 people in the past two weeks. See table below for more information on Burden Status for our county. Visit the DHS website for more information on this indicator <https://www.dhs.wisconsin.gov/covid-19/local.htm>

***Population for school district was retrieved from <https://nces.ed.gov/programs/edge/TableViewer/acsProfile/2018> Winnebago County Health Department Jurisdiction does not include the portions of the City of Menasha and the City of Appleton that fall within Winnebago County.

Burden Status	Case Rate per 100,000 residents in the past two weeks	Neenah SD Area	Omro SD Area	Oshkosh SD Area	Winneconne SD Area
Low	Case rate is less than or equal to 10.	Less than 4 cases.	Less than 1 case.	Less than 8 cases.	Less than 1 case.
Moderate	Case rate is greater than 10, but less than or equal to 50.	Greater than 4 cases, but less than or equal to 22 cases.	Greater than 1 case, but less than or equal to 4 cases.	Greater than 8 cases, but less than or equal to 40 cases.	Greater than 1 case, but less than or equal to 5 cases.
Moderately High	Case rate is greater than 50, but less than or equal to 100.	Greater than 22 cases, but less than or equal to 45 cases.	Greater than 4 cases, but less than or equal to 8 cases.	Greater than 40 cases, but less than or equal to 80 cases.	Greater than 5 cases, but less than or equal to 9 cases.
High	Case rate is greater than 100, but less than or equal to 350.	Greater than 45 cases, but less than or equal to 156 cases.	Greater than 8 cases, but less than or equal to 27 cases.	Greater than 80 cases, but less than or equal to 281 cases.	Greater than 9 cases, but less than or equal to 34 cases.
Very High	Case rate is greater than 350, but less than or equal to 1000.	Greater than 156 cases, but less than or equal to 446 cases.	Greater than 27 cases, but less than or equal to 77 cases.	Greater than 281 cases, but less than or equal to 804 cases.	Greater than 34 cases, but less than or equal to 97 cases.
Critically High	Case rate is greater than 1000.	Greater than 446 cases.	Greater than 77 cases.	Greater than 804 cases.	Greater than 97 cases.

Case rate is determined by number of new confirmed cases in a particular group (such as a school district) during the past two weeks, divided by the population of that particular group, multiplied by 100,000. Number of cases for each Burden Status refers to the number of cases during a two-week time span.

Number of Confirmed Cases and Rate per 100,000 People by School District Geographic Boundary in the Past Two Weeks (February 24 – March 9)

The highlighted cells for Neenah and Oshkosh School District Geographic Boundaries are colors associated with the burden status. Please see the table above for more information on burden status. This information is not provided for Omro and Winneconne School District Geographic Boundaries due to the small population size.

Age Group	Neenah SD Area		Omro SD Area		Oshkosh SD Area		Winneconne SD Area	
	# of cases	Rate per 100,000	# of cases	Rate per 100,000	# of cases	Rate per 100,000	# of cases	Rate per 100,000
<5	4	143.2	0	0.0	0	0.0	0	0.0
5-9	8	288.9	1	185.9	4	99.7	0	0.0
10-14	7	214.7	1	154.3	2	51.3	1	152.7
15-17	12	700.1	0	0.0	5	188.4	1	290.7
18-19	4	508.9	0	0.0	4	111.3	1	588.2
20-24	1	42.2	0	0.0	9	88.3	0	0.0
25-34	9	156.7	2	260.8	8	71.3	0	0.0
35-44	12	210.9	0	0.0	3	32.6	0	0.0
45-54	16	268.4	0	0.0	2	18.9	4	251.6
55-64	9	129.6	0	0.0	9	97.3	3	166.8
65-74	3	74.9	1	104.3	2	35.0	0	0.0
75-84	2	103.9	0	0.0	3	72.4	0	0.0
85+	1	157.0	0	0.0	0	0.0	0	0.0

Rate is determined by # of new confirmed cases during the past two weeks divided by population in the school district geographic boundary multiplied by 100,000. Rates can fluctuate greatly with small population sizes like Omro and Winneconne making it difficult to call out high rates. **Small population data may be more effectively looked at in a trend wise fashion.**

Age Group Trended Over Time

The tables below show the biweekly confirmed cases counts by school district geographic boundary across the past 3 months.

The graphs on the following pages show how case rates by age group have changed over time for Oshkosh and Neenah School District boundaries. The first graph on each page shows the biweekly confirmed case rates per 100,000 residents. The second graph shows the cumulative confirmed case rates. Cumulative case rates will always trend upward, it is the rate of increase in that trend that helps us understand what populations are being impacted the most. Omro and Winneconne do not have similar graphs due to small population size and small confirmed case counts in these geographic areas.

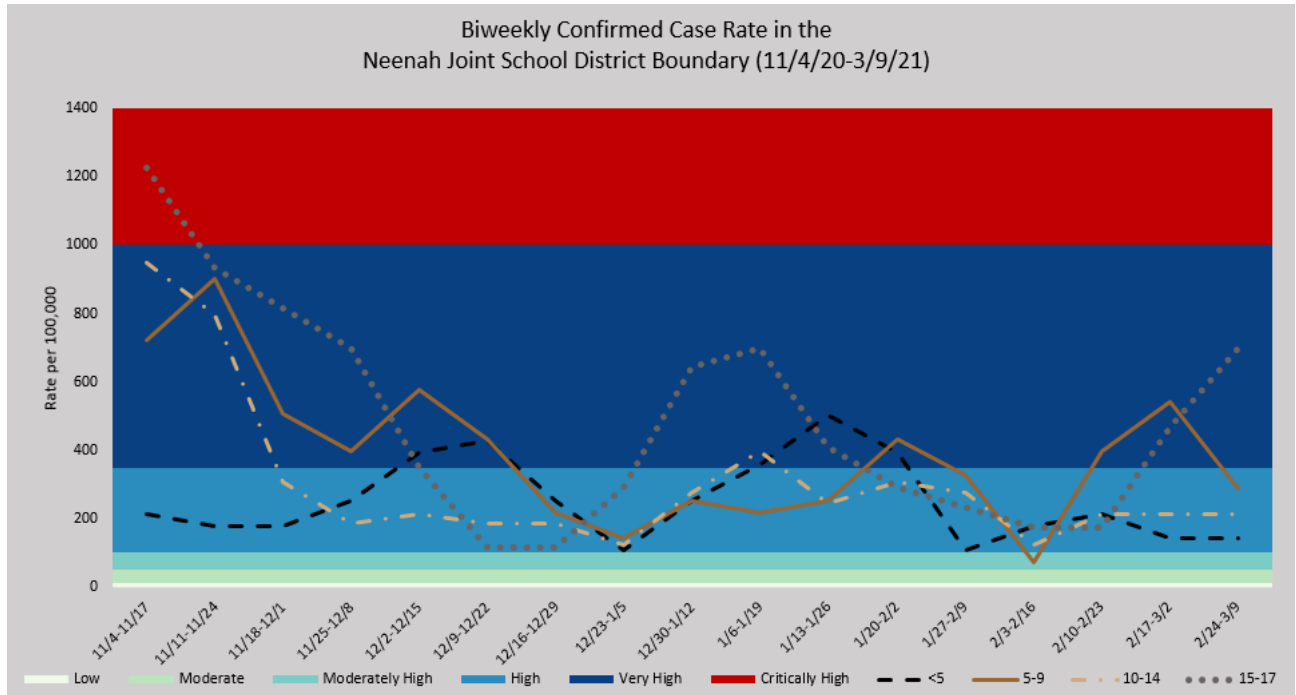
OMRO SCHOOL DISTRICT AREA				
Biweekly Confirmed Case Counts for Select Age Groups in the Omro School District Boundary				
Week	<5	5-9	10-14	15-17
12/9-12/22	0	3	2	0
12/16-12/29	0	0	0	0
12/23-1/5	0	1	0	0
12/30-1/12	2	2	0	0
1/6-1/19	2	1	1	0
1/13-1/26	0	1	2	0
1/20-2/2	0	1	1	0
1/27-2/9	0	0	0	0
2/3-2/16	0	0	4	12
2/10-2/23	0	1	4	16
2/17-3/2	0	2	1	4
2/24-3/9	0	1	1	0

WINNECONNE COMMUNITY SCHOOL DISTRICT AREA				
Biweekly Confirmed Case Counts for Select Age Groups in the Winneconne School District Boundary				
Week	<5	5-9	10-14	15-17
12/9-12/22	2	2	0	4
12/16-12/29	1	0	2	0
12/23-1/5	2	1	5	0
12/30-1/12	2	1	4	0
1/6-1/19	0	0	1	1
1/13-1/26	0	1	0	1
1/20-2/2	0	1	0	0
1/27-2/9	0	0	1	0
2/3-2/16	0	2	1	1
2/10-2/23	0	2	0	3
2/17-3/2	0	0	0	2
2/24-3/9	0	0	1	1

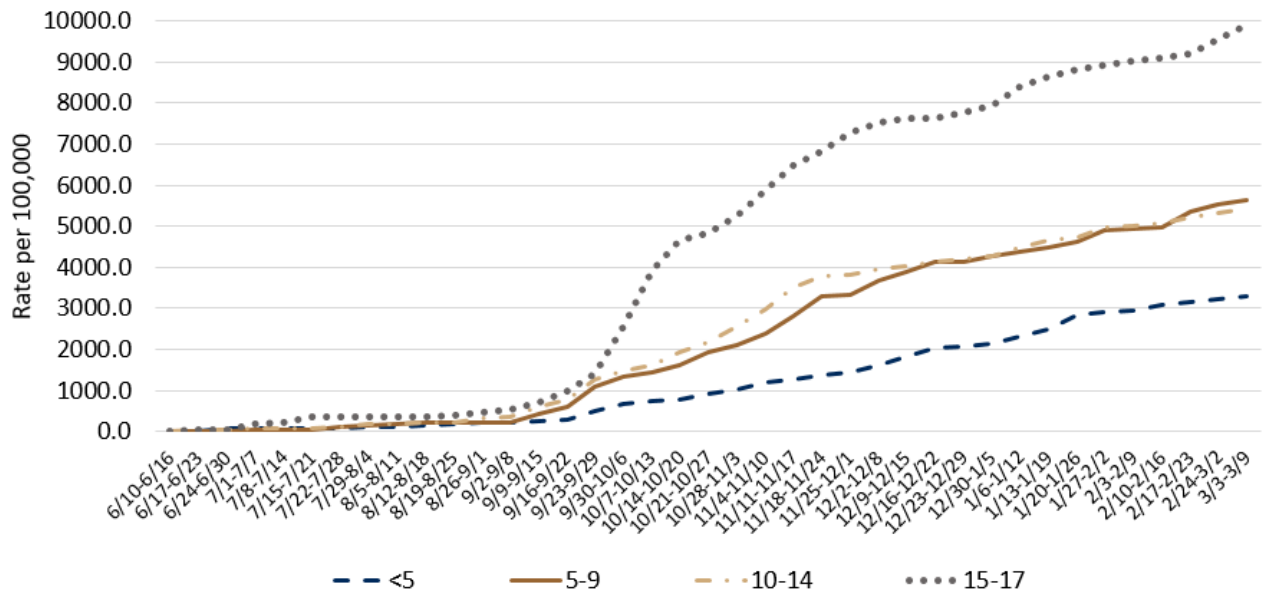
OSHKOSH AREA SCHOOL DISTRICT AREA				
Biweekly Confirmed Case Counts for Select Age Groups in the Oshkosh School District Boundary				
Week	<5	5-9	10-14	15-17
12/9-12/22	7	15	16	9
12/16-12/29	9	7	10	9
12/23-1/5	6	9	7	10
12/30-1/12	1	11	9	10
1/6-1/19	4	10	8	5
1/13-1/26	5	6	4	7
1/20-2/2	3	2	8	12
1/27-2/9	6	1	10	8
2/3-2/16	5	1	8	3
2/10-2/23	1	1	7	9
2/17-3/2	0	2	4	11
2/24-3/9	0	4	2	5

NEENAH JOINT SCHOOL DISTRICT AREA				
Biweekly Confirmed Case Counts for Select Age Groups in the Neenah School District Boundary				
Week	<5	5-9	10-14	15-17
12/9-12/22	12	12	6	2
12/16-12/29	7	6	6	2
12/23-1/5	3	4	4	5
12/30-1/12	7	7	9	11
1/6-1/19	10	6	13	12
1/13-1/26	14	7	8	7
1/20-2/2	11	12	10	5
1/27-2/9	3	9	9	4
2/3-2/16	5	2	4	3
2/10-2/23	6	11	7	3
2/17-3/2	4	15	7	8
2/24-3/9	4	8	7	12

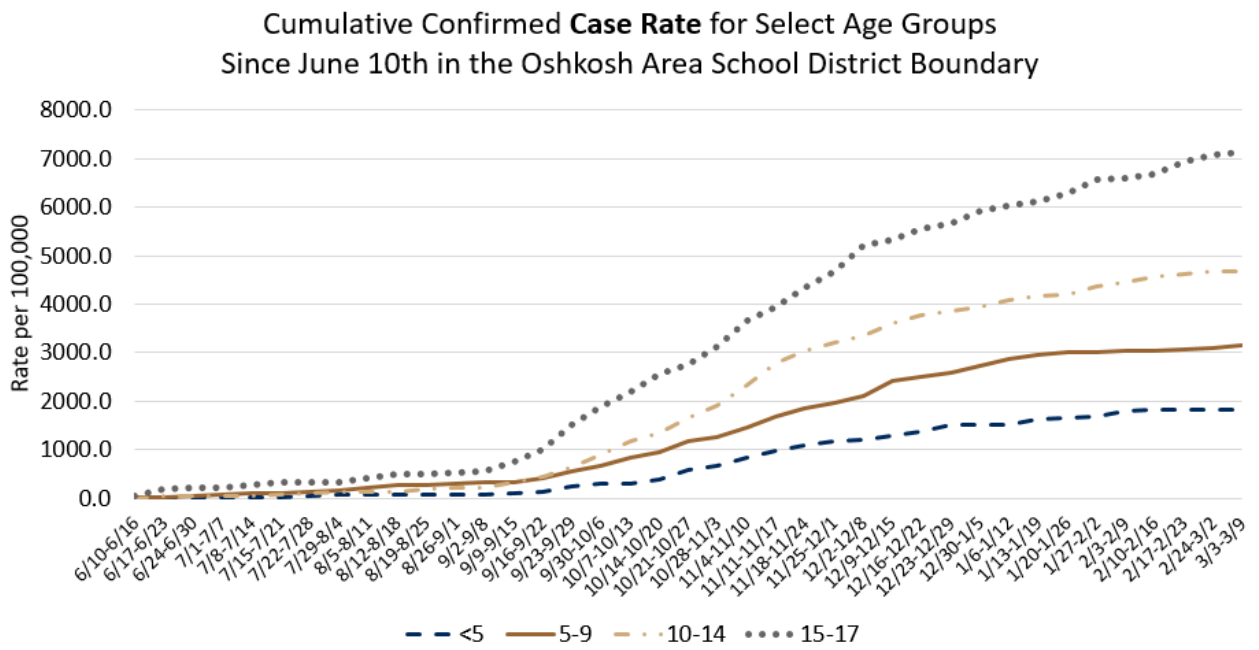
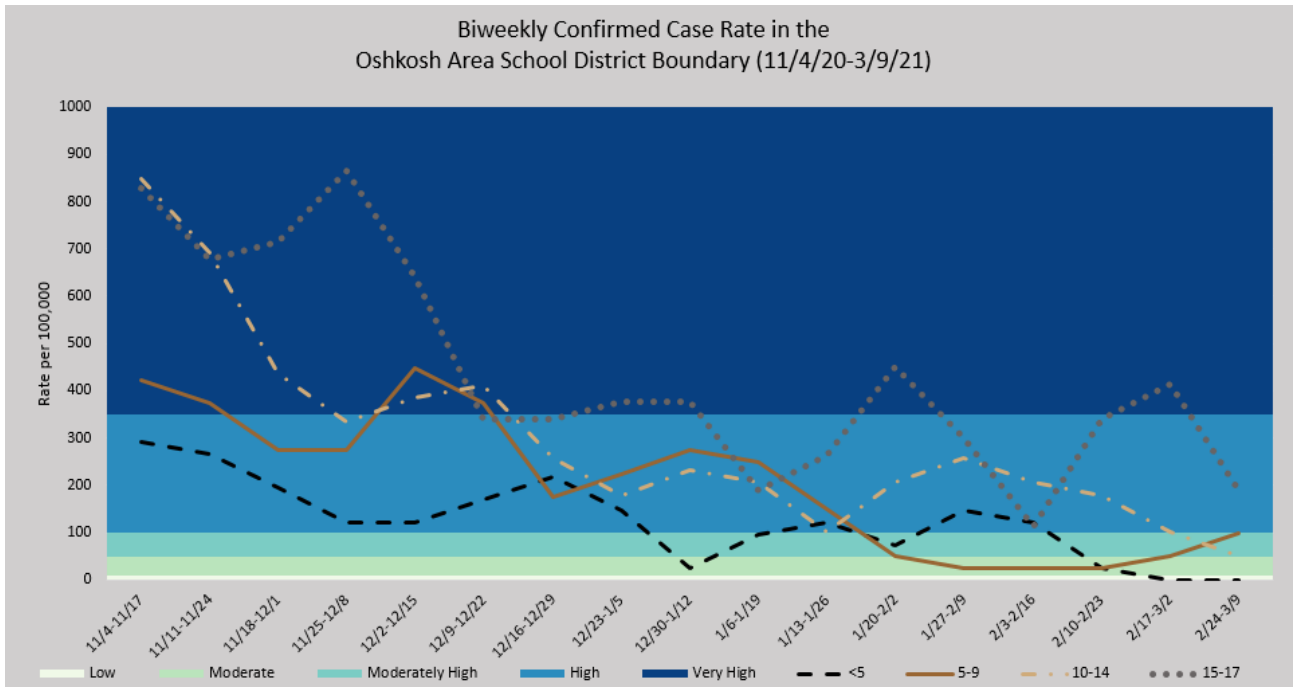
NEENAH JOINT SCHOOL DISTRICT GEOGRAPHIC BOUNDARY



**Cumulative Confirmed Case Rate for Select Age Groups
Since June 10th in the Neenah Joint School District Boundary**



OSHKOSH AREA SCHOOL DISTRICT GEOGRAPHIC BOUNDARY



Background Information

This report provides *preliminary* data on the confirmed COVID-19 cases from February 24, 2021 – March 9, 2021. **A person is counted as a confirmed COVID-19 case if they had a positive confirmatory laboratory test (for example, polymerase chain reaction (PCR) tests or nucleic acid amplification tests (NAT) that detect genetic material of SARS-CoV-2, the virus that causes COVID-19). Antigen positive tests are counted as probable cases and are not currently included in the case count rates and graphs in this report.** Please view the General Weekly Data Report to learn more about the confirmed and probable case counts, rates, and burden level.

Dates utilized for all graphs and tables are based on test result date and may not represent final reported case counts. Data may be underreported for recent days because results can take multiple days to be reported to the health department. This means the number of tests and percent positivity may change in next week's report. As this is a weekly report for the past 14 days, there will always be a week of overlap between reports.

Data by school district geographic boundary may differ from data provided by the respective school district. School district geographic boundaries are the geographic area from which children are **eligible** to attend a certain school district. Data by school district geographic boundary includes cases among all individuals that live within that boundary regardless of age or where they attend school. In this report, data for school age children (5-17) does not differentiate between where they actually attend school or if they are homeschooled.

For school district specific COVID-19 information:

- [Neenah Joint School District](#)
- [Omro School District](#)
- [Oshkosh Area School District](#)
- [Winneconne Community School District](#)

*The COVID-19 data provided in this report is specific to the Winnebago County Health Department (WCHD) jurisdiction (population: 153,748). It does not include the portions of the City of Menasha or City of Appleton that fall within Winnebago County as those areas fall within the jurisdiction of the [City of Menasha Health Department](#) and [City of Appleton Health Department](#). As of October 3, 2020, data reports from the Winnebago County Health Department do not include test results from residents in Wisconsin Department of Corrections facilities, which includes the Oshkosh Correctional Institute. This data can be found on the Wisconsin Department of Corrections [website](#).

Data provided on the [Department of Health Services website](#) may be different than the information provided by WCHD because the state reports data for the entire county based on address, which includes those portions of Menasha and Appleton as well as the correctional facilities.

For additional Winnebago County Health Department COVID-19 information:

- [WCHD COVID-19 Webpage](#)
- [General Weekly Data Summaries](#)
- [Municipality Weekly Data Summaries](#)
- [Trend Data Graphs](#)