



Winnebago County Solid Waste Management Board

100 W. County Road Y • Oshkosh, WI 54901
www.WinnebagoCountySolidWaste.com



2017 Annual Report

Solid Waste Management Board

The Solid Waste Management Board (SWMB) was created in 1975 by the Winnebago County Board to provide solid waste management services to all communities, businesses and industry in Winnebago County. At that time, its sole function was to operate the Snell Road Landfill.

Since its inception, the SWMB has been progressive and responsive to community needs while remaining cost conscious and environmentally responsible. Winnebago County Solid Waste (WCSW) has expanded into a comprehensive, integrated solid waste management program consisting of:

- Solid Waste/Recycling Transfer Station
- Landfill Gas Collection/Utilization
- Closed Landfill Environmental Monitoring/Maintenance
- Household Hazardous Material (HHM) Facility
- Electronics/Lamp Recycling
- Construction & Demolition Waste Recycling
- Asphalt Shingle Recycling

To further the goal of being cost conscious and environmentally responsible, Brown, Outagamie and Winnebago Counties joined forces in 2002 forming the Tri-County Regional Partnership to secure contracts for solid waste and recycling services with municipalities throughout the three county area. The savings realized by the three counties over the 25-year term of the Tri-County Regional Partnership was projected to be over \$50 million.

To reach the projected savings target, the Tri-County Regional Partnership has combined resources to designate and contribute to Regional Landfills and operate a Regional Single Stream Materials Recovery Facility (MRF) in Appleton. Efforts are also combined to offer Resource Recovery Programs, Household Hazardous Material (HHM) Programs and Special Materials Recycling. To date, the Tri-County Regional Partnership is on target with the projected savings and is recognized within the solid waste industry as a cost-effective and efficient way to deliver solid waste and recycling services. More recently, the Tri-County Regional Partnership focus has shifted to increase waste diversion rates, improve program efficiency and offer more robust services to meet customer needs.

This 2017 Annual Report provides information on each of the individual components of the WCSW Program along with financial and tonnage information.

Our Mission is to provide competitive, cost-effective solid waste management systems for processing solid waste and recyclable materials from Winnebago County customers.



Landfill/Transfer Station Operations & Resource Recovery

The Winnebago County Sunnyview Landfill reached capacity in July 2012, after functioning as the Regional Landfill since 2005. WCSW has since focused on operation of a solid waste and recycling transfer station, shipping waste materials to the Regional Landfill in Outagamie County and single stream recycling (SSR) to the Tri-County Recycling Facility in Outagamie County as part of the Tri-County Regional Program. In 2017, WCSW directed over 156,000 tons of waste and over 15,000 tons of SSR to the Regional Landfill and Tri-County Recycling Facility, respectively.

WCSW continues to research and implement opportunities to extend the life of the landfill by diverting traditional wastes through cost efficient resource recovery programs. In 2017, WCSW maintained a construction and demolition (C&D) waste recycling program. C&D waste is a mix of clean wood, vinyl siding, new drywall, concrete block/brick and metal that requires further handling at a facility that specializes in sorting these materials. WCSW keeps C&D wastes separate from traditional waste and hauls it to a privately operated facility in Appleton for processing.

In 2017, WCSW maintained a residential asphalt shingle (RAS) recycling program. By using the WCSW RAS recycling program, customers can turn the asphalt shingles from their homes into road paving materials used throughout Northeast Wisconsin.

WCSW maintained collaboration with University of Wisconsin - Oshkosh (UWO) Biogas Systems to supply grass and yard waste feedstock for a commercial scale dry fermentation biodigester located in Oshkosh. This joint effort allows WCSW to manage incoming yard wastes through a sustainable program while supporting faculty and student research in biogas technology.



New for 2017 - Color Coded Drop-off Containers



Closed Landfill Environmental Monitoring & Maintenance

The Sunnyview (Co-Disposal and Sludge Sites) and the Snell Road Landfills are closed and require ongoing monitoring and maintenance to comply with Wisconsin Department of Natural Resources (WDNR) permits. Closed landfill monitoring requires continued analysis of underground and surface conditions along with air quality to assess landfill site compliance.

In 2017, WCSW continued groundwater, gradient control, leachate and surface water monitoring and WDNR reporting for Sunnyview and Snell Road Landfills. Monthly landfill gas monitoring, quarterly surface emissions monitoring and reporting were also completed to maintain WDNR air permit compliance for Sunnyview and Snell Road Landfills. WCSW also continued operation of horizontal groundwater extraction



system, monitoring and WDNR reporting at Snell Road Landfill.

Closed landfill maintenance can include anything from landfill gas and leachate collection systems to landfill cover repairs to mowing and snow plowing.



WCSW closed landfills provide over 500 acres of habitat for native wildlife.



WCSW uses landfill gas to generate enough electricity to power approximately 2,500 residential homes.

Landfill Gas Collection & Utilization

Landfill gas, a renewable energy source is generated as trash and organic materials decompose. Methane, a primary component of landfill gas is captured at Sunnyview and Snell Road Landfills and burned to generate power and heat.

The WCSW Landfill Gas Facility operates a total of four engine/generators (4.4 MW of generation capacity) to burn the collected landfill gas and produce power and heat. The electricity produced from landfill gas is sold to a local utility. Waste heat from two of the engines/generators is used to supplement hot water, heating and cooling systems at the Winnebago County Sheriff's Office. Landfill gas is also used at the Winnebago County Highway Department for direct use in two boilers.

Excess landfill gas is burned in candlestick flares to maintain WDNR air permit compliance.

Electricity and direct use landfill gas revenues exceeded \$2.4 million in 2017 to offset operational expenses (avoided cost was \$2.2 million — savings in lieu of flaring landfill gas).



Enhanced Recycling Services

Did you know WDNR has designated certain wastes as banned from landfill disposal because they contain toxic components or highly reusable materials?

WCSW is a WDNR certified E-Waste Collector and offers a year-round, competitively priced electronics recycling program to residential

customers. In 2017, WCSW recycled 346,537 pounds of household electronics (up from 343,296 pounds in 2016).

WCSW also offers a lamp/bulb recycling program for commercial and residential customers. Over 16,100 bulbs were recycled in 2017 (up from over 15,300 bulbs in 2016).

WCSW continues to accept tires, both freon and non-freon appliances, used oil, oil filters, oil absorbents, antifreeze, lead acid batteries, household batteries, scrap metal and propane tanks for recycling at the Sunnyview Landfill Facility.



Household Hazardous Material Facility

In 2017, WCSW continued a partnership with Brown County for operation of a Household Hazardous Material (HHM) Facility and Product Exchange Room open on select days from May through October. This is a free service for Winnebago County residents and no appointments are necessary.

In 2017, the WCSW HHM Facility was used by 879 customers who properly disposed of over 42,600 pounds of household chemicals and cleaners, paints and stains, pesticides and insecticides (2016 totals: 852 customers with just over 45,400 pounds of HHM).

HHM surrendered in good condition is made available free to the public in the Product Exchange Room. "Recycling" usable HHM through the Product Exchange Room not only offers a penny wise option for customers who may need a partial can of paint or a few sprays of herbicides, but also saves on Facility disposal costs. In 2017, 5,222 pounds of usable product was offered to customers in the Product Exchange Room, saving the HHM Facility over \$5,500 in disposal costs.



In 2017, WCSW offered annual Agriculture and Household Hazardous Material Clean Sweep events at two satellite locations in Winnebago County. During the 2017 Clean Sweep, 65 households brought in 4,200 pounds of HHM and 5 farms brought in 1,000 pounds of agriculture hazardous materials for proper disposal. The 2017 Clean Sweep events offered free HHM disposal services to households and farms through funding from the sponsoring counties and grants provided by the Wisconsin Department of Agriculture, Trade and Consumer Protection.

In 2017, 5,222 pounds of select HHM was made available to residents free of charge in the Product Exchange Room.



Sharps Disposal Pilot Program

In 2017, WCSW partnered with Winnebago County Public Health, Outagamie County Recycling & Solid Waste, and Outagamie County Public Health to develop the Outagamie & Winnebago County Sharps Disposal Program. The cooperative effort focused on developing strategies to increase public awareness of proper sharps disposal, expand sharps disposal opportunities, and reduce the risk of accidental needle sticks

within the community and for solid waste/recycling collection workers and sorters.



In late 2017, Roundy's Pick 'n Save joined the effort by signing up to host the Pilot Program's free residential sourced sharps collection services at their Pharmacies located in Oshkosh, Neenah and Appleton.

Collections begin January 1, 2018. Program details are available at www.winnebagohealth.org.

Find answers to many of your recycling questions in the Northeast Wisconsin Recycle Guide.



In Your Community

Through the Tri-County Regional Partnership, WCSW continues to support the development of comprehensive educational materials, trendy advertising and useful on-line resources to encourage recycling within the households, schools and businesses of Winnebago, Outagamie and Brown counties.

In 2017, the Tri-County Regional Partnership published the "Northeast Wisconsin Recycle Guide," an annual booklet distributed in local Gannett newspapers, maintained

Ken Robl Conservation Park

Ken Robl Conservation Park (KRCP) conceptual planning and site surveys continued into 2017. The SWMB also continued working with Foth Infrastructure & Environmental and consultant SmithGroup JJR to refine site plans which included site beautification, visitor use and enhancement of wildlife habitat. The Winnebago County Parks Department also assisted the SWMB to determine recreational needs for the community and provide future park operations and maintenance.

KRCP first phase development began in late-2017 with a ground breaking ceremony. Construction followed with installation of a parking area, walking trail and access to an 8-acre pond on the northwest side of the property.

In early 2018, educational stations will be installed along the path, giving visitors opportunities to explore the property and learn about:

- The SWMB's mission, programs and role within the community.
- Key elements in a landfill operations, maintenance and end use planning.
- The benefits of recycling and reuse examples.

a regional recycling website www.recyclomoretricity.org, produced radio ads and television ads that promote Tri-County Recycling Programs.

WCSW maintains a Facebook account to highlight achievements, promote special events and share interesting articles that focus on resource recovery, sustainability and recycling. Facebook offers users an open platform to generate discussion on current solid waste and recycling topics. WCSW had over 4,000 Facebook followers in 2017.



FINANCIAL REPORTS Winnebago County Solid Waste Management Fund Statement of Revenues & Expenses Year End December 31, 2017 (compared to 2016) (Final Audited)

	2016	2017
OPERATING REVENUES		
Landfill Fees	\$9,230,816	\$8,891,350
Power Sales	2,871,804	2,870,438
Sales of By-Products	285,620	87,919
Total Operating Revenues	\$12,388,240	\$11,849,707
OPERATING EXPENSES		
Salaries and Wages	\$784,803	\$800,892
Employee Benefits	400,221	357,365
Supplies	28,388	21,914
Contractual Services	7,540,862	6,629,073
Other Operating Expenses	483,665	678,409
Utilities	375,731	359,842
Insurance	103,441	96,373
Depreciation and Amortization	1,386,973	1,388,114
Indirect Costs	86,295	95,880
WDNR Recycling Fees	4,864	0
WDNR State Special Charge Fees	8,997	0
Landfill/Recycling License	29,400	32,114
General & Administrative	49,733	95,435
Total Operating Expenses	\$11,283,373	\$10,555,411
NON-OPERATING REVENUES (EXPENSES)		
Rental Income	\$0	\$0
Interest Income	276,428	423,869
Interest Expense	(960)	(764)
Miscellaneous	506,367	18,500
Total Non-Operating Revenues	\$781,835	\$441,605
NET SURPLUS (DEFICIT)	\$1,886,702	\$1,735,901
NET ASSETS, JANUARY 1	\$31,551,951	\$33,438,653
PRIOR YEAR ADJUSTMENT	\$0	(\$134,391)
NET ASSETS, DECEMBER 31	\$33,438,653	\$35,040,163



The WCSW Solid Waste Tipping Fee has consistently been 30% lower than the statewide average.

Being an integral part of the Tri-County Regional Program allows WCSW to remain strong and competitive in the solid waste disposal and recycling markets, and maintain low overall costs for our users.

FINANCIAL REPORTS (CONTINUED)
Winnebago County Solid Waste Management Fund
Balance Sheet
Year End December 31, 2017 (compared to 2016)
(Final Audited)

	2016	2017
ASSETS		
CURRENT ASSETS		
Cash and Investments	\$32,065,629	\$32,800,340
Other Receivables	1,813,429	1,085,651
Inventories and Prepayments	85,307	43,544
Total Current Assets	<u>\$33,964,365</u>	<u>\$33,929,535</u>
RESTRICTED ASSETS		
Cash and Investments	\$12,914,431	\$12,390,536
DEFERRED OUTFLOWS OF RESOURCES		
Charges for Pensions	\$434,157	\$313,300
PROPERTY AND EQUIPMENT		
Net Property and Equipment	<u>\$6,534,579</u>	<u>\$7,145,393</u>
TOTAL ASSETS	<u>\$53,847,532</u>	<u>\$53,778,764</u>
LIABILITIES AND FUND EQUITY		
CURRENT LIABILITIES (PAYABLE FROM CURRENT ASSETS)		
Total Current Liabilities	\$1,447,041	\$1,200,980
LONG-TERM LIABILITIES		
General Obligation Bonds Payable	\$38,012	\$20,951
Other Long-Term Liabilities	18,760,868	17,388,365
Deferred Inflow Pension	162,958	128,305
Total Long-Term Liabilities	<u>18,961,838</u>	<u>17,537,621</u>
Total Liabilities	<u>\$20,408,879</u>	<u>\$18,738,601</u>
FUND EQUITY		
Investment in Capital Assets	\$6,534,579	\$7,145,393
Restricted Funds	193,821	381,380
Reserved for Solid Waste	26,710,253	27,513,390
Total Fund Equity	<u>\$33,438,653</u>	<u>\$35,040,163</u>
TOTAL LIABILITIES & FUND EQUITY	<u>\$53,847,532</u>	<u>\$53,778,764</u>

FINANCIAL REPORTS (CONTINUED)
Winnebago County Solid Waste Management Fund
Retained Earnings Reservation
Year End December 31, 2017 (compared to 2016)
(Final Audited)

DESCRIPTION	Fund Goal Authorized by SWMB	
	2016	2017
Designated Emergency Funds:		
Regulatory Compliance	\$1,000,000	\$1,000,000
Remediation/Liability	500,000	500,000
Litigation	200,000	200,000
Interim Construction	1,000,000	1,000,000
Capital Outlay	500,000	500,000
Future Landfill Airspace Development	5,500,000	7,300,000
Operational Cash Flow	1,500,000	1,500,000
Debt Service - Recycling	1,100,000	800,000
Surplus for Future Solid Waste Transportation	4,000,000	3,200,000
Research & Development Planning	1,000,000	1,000,000
Snell Road Landfill LTC >20 Years	6,500,000	6,500,000
Sunnyview Landfill LTC >40 Years	2,500,000	2,500,000
Landfill End Use/Beautification	1,200,000	1,000,000
TOTAL RESERVED	<u>\$26,500,000</u>	<u>\$27,000,000</u>
Balance (December 31)	\$26,710,253	\$27,513,390



**2016-2017 Tonnage Summary
Winnebago County Solid Waste Customers**

TRANSFER STATION/DIRECT HAULS - OUTAGAMIE COUNTY NORTHEAST LANDFILL			
Waste Type	2016	2017	
Residential/Municipal	44,752	46,569	
Commercial	22,728	24,959	
Industrial	27,711	23,789	
Construction/Demolition	10,995	11,605	
Auto Shredder Fluff	682	17,795	
Waste Water Treatment Plant Sludge	519	160	
Papermill Sludge	6,666	21,866	
Foundry Sand	25	863	
Boiler Ash	25	141	
Miscellaneous/Special Wastes	3,834	8,666	
Subtotal	117,938	156,414	
DISPOSAL - WINNEBAGO COUNTY INDUSTRIAL/SLUDGE LANDFILL			
Waste Type	2016	2017	
Papermill Sludge	26,380	---	
Foundry Sand	402	---	
Power Plant Fly Ash	87,108	---	
Power Plant Bottom Ash	9,777	---	
Boiler Ash	143	---	
Non-Impacted Soil	44	---	
Subtotal	123,855	---	
RECYCLED MATERIALS - VARIOUS LOCATIONS			
Waste Type	2016	2017	
Single Stream Recycling	14,344	14,527	
Construction/Demolition	8,942	7,239	
Asphalt Shingles	2,107	2,737	
Grass/Yard Waste	1,488	2,518	
Clean Wood/Brush	1,053	---	
Tires	66	69	
Subtotal	28,000	27,091	
Grand Total	269,792	183,505	



In 2016, Winnebago County Solid Waste experienced the greatest tonnage increases in Papermill Sludge, Power Plant Fly Ash, and Bottom Ash. These additional materials were landfilled at the Sunnyview Sludge Site to accelerate filling and allow for closure and final cover construction in 2017.

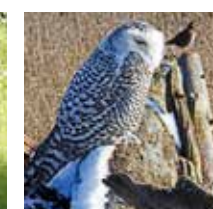
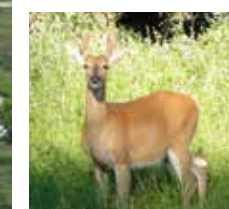
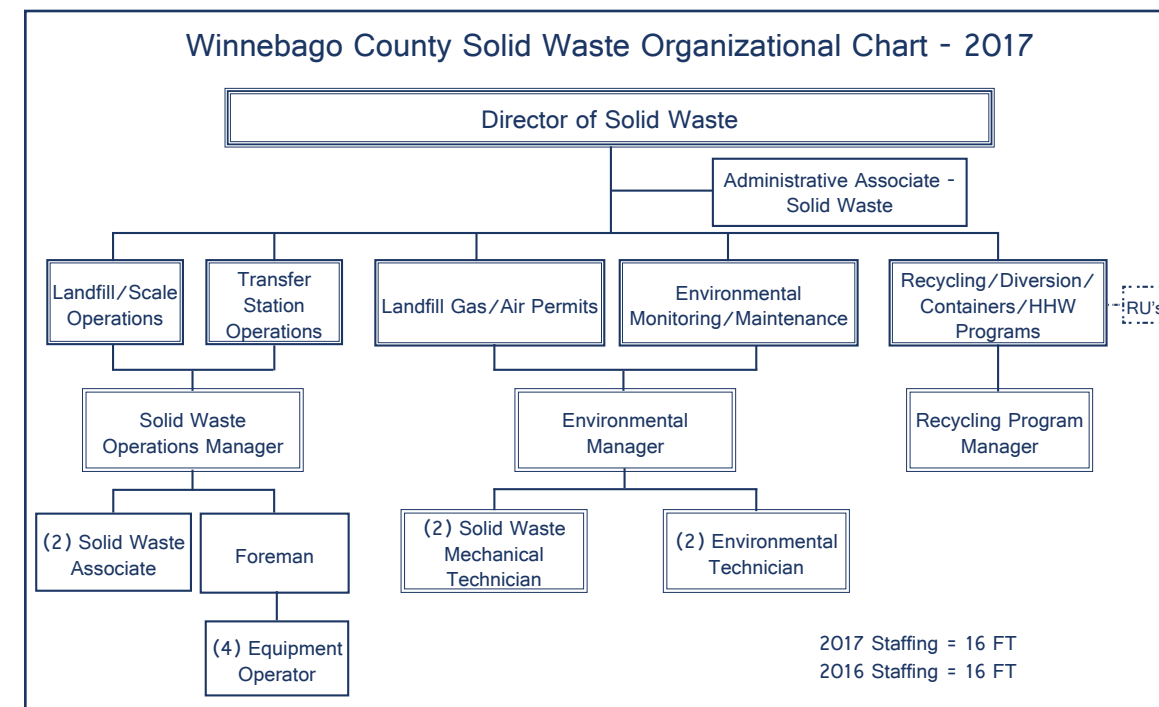
Winnebago County Solid Waste Management Board Members

Pat O'Brien, Chair	David Albrecht	Gerald Konrad
Ken Robl, Vice Chair	Mike Easker	Susan Locke
Paul Eisen, Secretary	Jerry Finch	Doug Nelson

The SWMB consists of five County Board Supervisors and four citizens from the County whom are appointed by the County Executive. SWMB Members serve staggered three-year terms. The SWMB directs operation of the Landfill Facilities, Solid Waste and Recycling Transfer Station, Resource Recovery Programs, Household Hazardous Materials Collection Facility, Container Rental and Lease Program, and Landfill Gas-to-Energy Facilities in Winnebago County.

Winnebago County Solid Waste Management Staff

John M. Rabe, Director of Solid Waste
Kurt Pernsteiner, Operations Manager
Kathy Hutter, Recycling Program Manager





Winnebago County

Solid Waste Management

100 West County Road Y • Oshkosh, WI 54901
Telephone (920) 232-1800 • Fox Valley (920) 727-2884 • Fax (920) 424-1189

John M. Rabe, Director of Solid Waste

Visit us on the web at:
www.WinnebagoCountySolidWaste.com
www.facebook.com/WinnebagoCountySolidWaste