



Winnebago County Solid Waste Management Board

100 W. County Road Y • Oshkosh, WI 54901
www.WinnebagoCountySolidWaste.com



2016 Annual Report

Solid Waste Management Board

The Solid Waste Management Board (SWMB) was created in 1975 by the Winnebago County Board to provide solid waste management services to all communities, businesses and industry in Winnebago County. At that time, its sole function was to operate the Snell Road Landfill.

Since its inception, the SWMB has been progressive and responsive to community needs while remaining cost conscious and environmentally responsible. Winnebago County Solid Waste (WCSW) has expanded into a comprehensive, integrated solid waste management program consisting of:

- Solid Waste/Recycling Transfer Station
- Industrial Waste/Papermill Sludge Landfill
- Landfill Gas Collection/Utilization
- Closed Landfill Environmental Monitoring/Maintenance
- Asphalt Shingle Recycling
- Construction & Demolition Waste Recycling
- Household Hazardous Material (HHM) Facility
- Electronics/Bulb Recycling
- Pharmaceutical Management
- Container Rental and Lease Program

To further the goal of being cost conscious and environmentally responsible, Brown, Outagamie and Winnebago Counties joined forces in 2002 forming the Tri-County Regional Partnership to secure contracts for solid waste and recycling services with municipalities throughout the three county area. The savings realized by the three counties over the 25-year term of the Tri-County Regional Partnership was projected to be over \$50 million.

To reach the projected savings target, the Tri-County Regional Partnership has combined resources to designate and contribute to Regional Landfills and operate a Regional Single Stream Materials Recovery Facility (MRF) in Appleton. Efforts are also combined to offer Resource Recovery Programs, Household Hazardous Material (HHM) Programs and Special Materials Recycling. To date, the Tri-County Regional Partnership is on target with the projected savings and is recognized within the solid waste industry as a cost-effective and efficient way to deliver solid waste and recycling services. More recently, the Tri-County Regional Partnership focus has shifted to increase waste diversion rates, improve program efficiency and offer more robust services to meet customer needs.

This 2016 Annual Report provides information on each of the individual components of the WCSW Program along with financial and tonnage information.

Our Mission is to provide competitive, cost-effective solid waste management systems for processing solid waste and recyclable materials from Winnebago County customers.



Transfer Station Operations & Resource Recovery

Sunnyview Landfill, located in Winnebago County reached capacity in July 2012, after functioning as the Regional Landfill since 2005. WCSW has since focused on operation of a solid waste and recycling transfer station, shipping waste materials to the Regional Landfill in Outagamie County and single stream recycling (SSR) to the Tri-County Recycling Facility in Outagamie County as part of the Tri-County Regional Program. In 2016, WCSW directed over 117,000 tons of waste and over 14,000 tons of SSR to the Regional Landfill and Tri-County Recycling Facility, respectively.

WCSW continues to research and implement opportunities to extend the life of the landfill by diverting traditional wastes through cost efficient resource recovery programs. In 2016, WCSW maintained a construction and demolition (C&D) waste recycling program. C&D waste is a mix of clean wood, vinyl siding, new drywall, concrete block/brick and metal that requires further handling at a facility that specializes in sorting these materials. WCSW keeps C&D wastes separate from traditional waste and hauls it to a privately operated facility in Appleton for processing.

In 2016, WCSW maintained a residential asphalt shingle (RAS) recycling program. By using the WCSW RAS recycling program, customers can turn the asphalt shingles from their homes into road paving materials used throughout Northeast Wisconsin.

WCSW maintained collaboration with University of Wisconsin - Oshkosh (UWO) Biogas Systems to supply grass and yard waste feedstock for a commercial scale dry fermentation biodigester located in Oshkosh. This joint effort allows WCSW to manage incoming yard wastes through a sustainable program while supporting faculty and student research in biogas technology.



Sunnyview Industrial Waste/Papermill Sludge Landfill

WCSW operates an Industrial Waste/ Papermill Sludge Landfill as part of the Sunnyview Landfill Facility. WCSW contracts with various local papermills to provide sludge disposal services for papermill sludge. WCSW also accepts other industrial wastes (foundry sand

and coal ash products) from various customers. The Industrial Waste/ Papermill Sludge Landfill was filled to capacity in 2016 and will be closed in 2017.



Closed Landfill Environmental Monitoring & Maintenance

Sunnyview (Co-Disposal Site) and Snell Road Landfills are closed and require ongoing monitoring and maintenance to comply with Wisconsin Department of Natural Resources (WDNR) permits. Closed landfill monitoring requires continued analysis of underground and surface conditions along with air quality to assess landfill site compliance.

In 2016, WCSW continued groundwater, gradient control, leachate and surface

water monitoring and WDNR reporting for Sunnyview and Snell Road Landfills. Monthly landfill gas monitoring, quarterly surface emissions monitoring and reporting were also completed to maintain WDNR air permit compliance for Sunnyview and Snell Road Landfills. WCSW also continued operation of horizontal groundwater extraction system, monitoring and WDNR reporting at Snell Road Landfill.



Closed landfill maintenance can include anything from landfill gas and leachate collection systems to landfill cover repairs to mowing and snow plowing.



WCSW closed landfills provide over 500 acres of habitat for native wildlife.



WCSW uses landfill gas to generate enough electricity to power approximately 2,500 residential homes.

Landfill Gas Collection & Utilization

Landfill gas, a renewable energy source is generated as trash and organic materials decompose. Methane, a primary component of landfill gas is captured at Sunnyview and Snell Road Landfills and burned to generate power and heat.

The WCSW Landfill Gas Facility operates a total of four engine/generators (4.4 MW of generation capacity) to burn the collected landfill gas and produce power and heat. The electricity produced from landfill gas is sold to a local utility. Waste heat from two of the engines/generators is used to supplement hot water, heating and cooling systems at the Winnebago County Sheriff's Office. Landfill gas is also used at the Winnebago County Highway Department for direct use in two boilers.

Excess landfill gas is burned in candlestick flares to maintain WDNR air permit compliance.

Electricity and direct use landfill gas revenues exceeded \$2.88 million in 2016 to offset operational expenses (avoided cost was \$2.42 million — savings in lieu of flaring landfill gas).



Enhanced Recycling Services

Did you know WDNR has designated certain wastes as banned from landfill disposal because they contain toxic components or highly reusable materials?

WCSW is a WDNR certified E-Waste Collector and offers a year-round, competitively priced electronics recycling program to residential

customers. In 2016, WCSW recycled 343,296 pounds of household electronics (up from 334,909 pounds in 2015).

WCSW also offers a lamp/bulb recycling program for commercial and residential customers. Over 15,300 bulbs were recycled in 2016 (up from over 13,500 bulbs in 2015).

WCSW continues to accept tires, both freon and non-freon appliances, waste oil, oil filters, oil absorbents, antifreeze, lead acid batteries, household batteries, scrap metal and propane tanks for recycling at the Sunnyview Landfill Facility.



Household Hazardous Material and Pharmaceutical Waste Management

In 2016, WCSW continued a partnership with Brown County for operation of a Household Hazardous Material (HHM) Facility and Product Exchange Room open on select days from March through October. This is a free service for Winnebago County residents and no appointments are necessary.



In 2016, the WCSW HHM Facility was used by 852 customers who properly disposed of over 45,400 pounds of household chemicals and cleaners, paints and stains, pesticides and insecticides (slightly down from 902 customers with just over 48,000 pounds of HHM in 2015).

HHM surrendered in good condition is made available free to the public in the Product Exchange Room. "Recycling" usable HHM through the Product Exchange Room not only offers a penny wise option for customers who may need a partial can of paint or a few sprays of herbicides, but also saves on Facility disposal costs. In 2016, 5,739 pounds of usable product was offered to customers in the Product Exchange Room, saving the HHM Facility over \$6,000 in disposal costs.

In 2016, WCSW partnered with Outagamie County Recycling & Solid Waste and Calumet County University of Wisconsin - Extension to offer an annual Agriculture and Household Hazardous Material Clean Sweep. This seven-day event was held at nine locations in Winnebago, Outagamie and Calumet Counties. During the 2016 Clean Sweep, 490 households

brought in 19,057 pounds of HHM and 16 farms brought in 8,118 pounds of agriculture hazardous materials for proper disposal. The 2016 Clean Sweep events offered free HHM disposal services to households and farms through funding from the sponsoring counties and grants provided by the Wisconsin Department of Agriculture, Trade and Consumer Protection.

In 2016, WCSW continued to support the Drug Drop safe medication disposal program by obtaining DATCP Grant Funds used for public education and promotion of permanent Drug Drop collection boxes located in Oshkosh, Neenah, the Village of Fox Crossing, and the City of Menasha.

Pharmaceutical collection programs provide environmentally safe disposal options for expired or unwanted medications. All Winnebago County Drug Drop locations are open 24/7 and offer a safe and anonymous site to dispose of medications at no charge to the general public.



In 2016, 5,739 pounds of select HHM was made available to residents free of charge in the Product Exchange Room.



Did you know, medication that is not disposed of properly has potential to harm people, pets and wildlife? The Winnebago County "Drug Drop" program offers free, safe disposal of unwanted medications.



Find answers to many of your recycling questions in the Tri-County Recycling Guide.



In Your Community

Through the Tri-County Regional Partnership, WCSW continues to support the development of comprehensive educational materials, trendy advertising and useful on-line resources to encourage recycling within the households, schools and businesses of Winnebago, Outagamie and Brown counties.

In 2016, the Tri-County Regional Partnership published the "Tri-County Recycling Guide," an annual booklet distributed in local Gannett newspapers, maintained a regional recycling website

Ken Robl Conservation Park

Ken Robl Conservation Park (KRCP) conceptual planning continued into 2016 as the SWMB refined the Snell Road closed landfill end use plans. Development areas, site beautification, visitor use, wildlife habitat, and partnerships were all considered. The SWMB hired Foth Infrastructure & Environmental with consultant SmithGroupJJR to develop site plans and conduct site surveys. The Winnebago County Parks Department also assisted the SWMB to determine recreational needs for the community and provide future park operations and maintenance.

Development of the KRCP offers numerous benefits to citizens and visitors of Winnebago County. The SWMB determined that KRCP shall: offer educational opportunities that focus on solid

www.recyclemoretricity.org, produced radio ads and television ads that promote Tri-County Recycling Programs.

WCSW maintains a Facebook account to highlight achievements, promote special events and share interesting articles that focus on resource recovery, sustainability and recycling. Facebook offers users an open platform to generate discussion on current solid waste and recycling topics. WCSW had over 4,000 Facebook followers in 2016.

waste and recycling programs, support community outdoor recreation programs, and become a showcase example for a landfill end use plan that benefits the community.



KRCP first phase of planning and development is expected to be finalized in late 2017. The SWMB plans to open access to an 8-acre pond on the northwest side of the property and install a fishing pier. Walking trails will lead visitors through naturalized green space and encircle the pond. Educational stations will be featured along the path, giving visitors opportunities to

- explore the property and learn about:
- The SWMB's mission, programs and role within the community.
 - Key elements in a landfill operations, maintenance and end use planning.
 - The benefits of recycling and reuse examples.

FINANCIAL REPORTS

Winnebago County Solid Waste Management Fund Statement of Revenues & Expenses Year End December 31, 2016 (compared to 2015) (Final Audited)

	2015	2016
OPERATING REVENUES		
Landfill Fees	\$5,941,986	\$9,230,816
Power Sales	3,110,668	2,871,804
Sales of By-Products	271,434	285,620
Total Operating Revenues	\$9,324,088	\$12,388,240
OPERATING EXPENSES		
Salaries and Wages	\$800,807	\$784,803
Employee Benefits	280,223	400,221
Supplies	28,557	28,388
Contractual Services	5,617,456	7,540,862
Other Operating Expenses	786,582	483,665
Utilities	425,274	375,731
Insurance	85,681	103,441
Depreciation and Amortization	668,942	1,386,973
Indirect Costs	94,140	86,295
WDNR Recycling Fees	4,665	4,864
WDNR State Special Charge Fees	10,781	8,997
Landfill/Recycling License	40,078	29,400
General & Administrative	85,575	49,733
Total Operating Expenses	\$8,928,761	\$11,283,373
NON-OPERATING REVENUES (EXPENSES)		
Rental Income	\$0	\$0
Interest Income	405,274	276,428
Interest Expense	(1,115)	(960)
Miscellaneous	45,391	506,367
Total Non-Operating Revenues	\$449,550	\$781,835
NET SURPLUS (DEFICIT)	\$844,877	\$1,886,702
NET ASSETS, JANUARY 1	\$30,465,815	\$31,551,951
PRIOR YEAR ADJUSTMENT	\$241,259	\$0
NET ASSETS, DECEMBER 31	\$31,551,951	\$33,438,653



The WCSW Solid Waste Tipping Fee has consistently been 30% lower than the statewide average.

Being an integral part of the Tri-County Regional Program allows WCSW to remain strong and competitive in the solid waste disposal and recycling markets, and maintain low overall costs for our users.

FINANCIAL REPORTS (CONTINUED)
Winnebago County Solid Waste Management Fund
Balance Sheet
Year End December 31, 2016 (compared to 2015)
(Final Audited)

	2015	2016
ASSETS		
CURRENT ASSETS		
Cash and Investments	\$26,995,129	\$32,065,629
Other Receivables	1,134,081	1,813,429
Inventories and Prepayments	125,304	85,307
Total Current Assets	<u>\$28,254,514</u>	<u>\$33,964,365</u>
RESTRICTED ASSETS		
Cash and Investments	\$16,767,544	\$12,914,431
DEFERRED OUTFLOWS OF RESOURCES		
Charges for Pensions	\$128,069	\$0
PROPERTY AND EQUIPMENT		
Net Property and Equipment	\$6,624,834	\$6,968,736
TOTAL ASSETS	<u>\$51,774,961</u>	<u>\$53,847,532</u>
LIABILITIES AND FUND EQUITY		
CURRENT LIABILITIES (PAYABLE FROM CURRENT ASSETS)		
Total Current Liabilities	\$1,446,662	\$1,447,041
LONG-TERM LIABILITIES		
General Obligation Bonds Payable	\$53,928	\$38,012
Other Long-Term Liabilities	18,722,420	20,207,909
Total Long-Term Liabilities	18,776,348	20,245,921
Total Liabilities	<u>\$20,223,010</u>	<u>\$21,692,962</u>
FUND EQUITY		
Investment in Capital Assets	\$6,767,858	\$5,444,317
Reserved for Solid Waste	24,784,093	26,710,253
Total Fund Equity	<u>\$31,551,951</u>	<u>\$32,154,570</u>
TOTAL LIABILITIES & FUND EQUITY	<u>\$51,774,961</u>	<u>\$53,847,532</u>

FINANCIAL REPORTS (CONTINUED)
Winnebago County Solid Waste Management Fund
Retained Earnings Reservation
Year End December 31, 2016 (compared to 2015)
(Final Audited)

DESCRIPTION	Fund Goal Authorized by SWMB	
	2015	2016
Designated Emergency Funds:		
Regulatory Compliance	\$1,000,000	\$1,000,000
Remediation/Liability	500,000	500,000
Litigation	200,000	200,000
Interim Construction	1,000,000	1,000,000
Capital Outlay	500,000	500,000
Future Landfill Airspace Development	4,000,000	5,500,000
Operational Cash Flow	1,500,000	1,500,000
Debt Service - Recycling	1,400,000	1,100,000
Surplus for Future Solid Waste Transportation	3,600,000	4,000,000
Research & Development Planning	800,000	1,000,000
Snell Road Landfill LTC >20 Years	6,500,000	6,500,000
Sunnyview Landfill LTC >40 Years	2,500,000	2,500,000
Landfill End Use/Beautification	1,000,000	1,200,000
TOTAL RESERVED	<u>\$24,500,000</u>	<u>\$26,500,000</u>
Balance (December 31)	\$24,784,093	\$26,710,253



**2015-2016 Tonnage Summary
Winnebago County Solid Waste Customers**

**TRANSFER STATION/DIRECT HAULS -
OUTAGAMIE COUNTY NORTHEAST LANDFILL**

Waste Type	2015	2016
Residential/Municipal	43,851	44,752
Commercial	20,343	22,728
Industrial	24,190	27,711
Construction/Demolition	9,504	10,995
Auto Shredder Fluff	7,161	564
Waste Water Treatment Plant Sludge	2,214	519
Papermill Sludge	5,094	6,666
Foundry Sand	42	143
Boiler Ash	24	25
Miscellaneous/Special Wastes	1,810	3,835
Subtotal	114,233	117,938

**DISPOSAL - WINNEBAGO COUNTY
INDUSTRIAL/SLUDGE LANDFILL**

Waste Type	2015	2016
Papermill Sludge	29,899	26,380
Foundry Sand	416	402
Power Plant Fly Ash	5,207	87,108
Power Plant Bottom Ash	---	9,777
Boiler Ash	169	143
Non-Impacted Soil	6,634	44
Subtotal	42,325	123,855

RECYCLED MATERIALS - VARIOUS LOCATIONS

Waste Type	2015	2016
Single Stream Recycling	13,641	14,344
Construction/Demolition	9,064	8,942
Asphalt Shingles	1,850	2,107
Grass/Yard Waste	1,125	1,488
Clean Wood/Brush	1,738	1,053
Tires	79	66
Subtotal	27,497	28,000
Grand Total	184,055	269,792



In 2016, Winnebago County Solid Waste experienced the greatest tonnage increases in Papermill Sludge, Power Plant Fly Ash, and Bottom Ash. These additional materials were landfilled at the Sunnyview Sludge Site to accelerate filling and allow for closure and final cover construction in 2017.

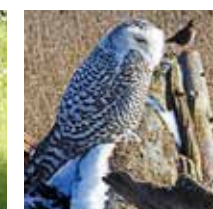
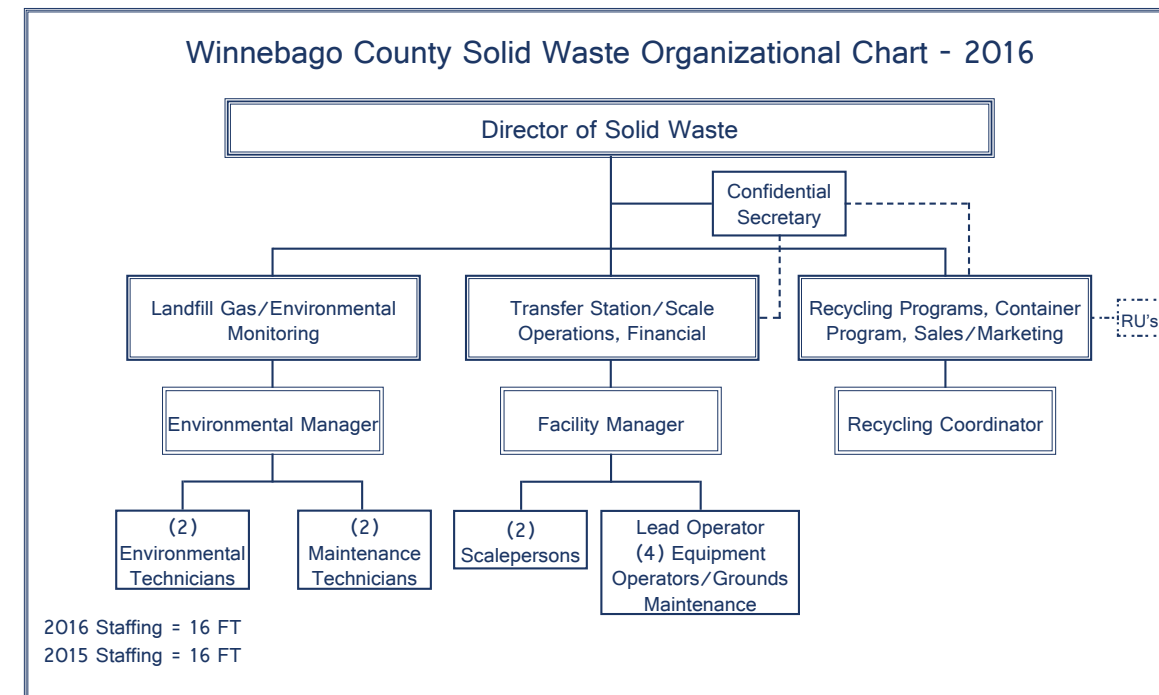
Winnebago County Solid Waste Management Board Members

Pat O'Brien, Chair	David Albrecht	Gerald Konrad
Ken Robl, Vice Chair	Mike Easker	Susan Locke
Paul Eisen, Secretary	Jerry Finch	Doug Nelson

The SWMB consists of five County Board Supervisors and four citizens from the County whom are appointed by the County Executive. SWMB Members serve staggered three-year terms. The SWMB directs operation of the Landfill Facilities, Solid Waste and Recycling Transfer Station, Resource Recovery Programs, Household Hazardous Materials Collection Facility, Container Rental and Lease Program, and Landfill Gas-to-Energy Facilities in Winnebago County.

Winnebago County Solid Waste Management Staff

John Rabe, Director of Solid Waste
 Kurt Pernsteiner, Facility Manager
 Jennifer Semrau, Recycling Coordinator
 Kathy Hutter, Confidential Secretary/Recycling Coordinator





Winnebago County

Solid Waste Management

100 West County Road Y • Oshkosh, WI 54901
Telephone (920) 232-1800 • Fox Valley (920) 727-2884 • Fax (920) 424-1189

John Rabe, Director of Solid Waste

Visit us on the web at:
www.WinnebagoCountySolidWaste.com
www.facebook.com/WinnebagoCountySolidWaste