

**The
Winnebago County
DEPARTMENT OF HUMAN SERVICES**

PUBLIC HEARING

2014 BUDGET

In Oshkosh

On

Wednesday

June 19, 2013

6:00 p.m. – 7:00 p.m.

at the

**Oshkosh Public Library
106 Washington Avenue
Lower Level Meeting
Room A/B
(wheelchair accessible)**

In Neenah

On

Thursday

June 20, 2013

8:30 a.m. – 9:30 a.m.

at the

**Neenah Human
Services Building
211 N. Commercial St.
Room 008, Lower Level
(wheelchair accessible)**

The annual HS Public Hearing Booklet is available at the following locations:

- Human Services web-site: www.co.winnebago.wi.us/human-services
- By E-mail: dhs@co.winnebago.wi.us
- By Telephone: (920) 236-4602 or 727-2882, ext. 4602

Arrangements to accommodate special needs may be made by calling the telephone number stated above.

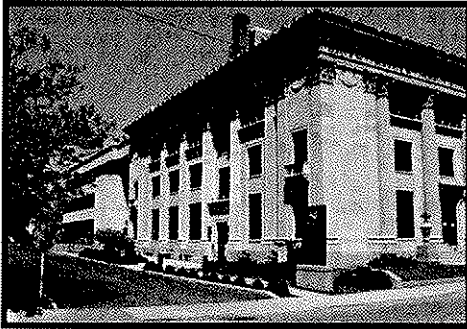
TABLE OF CONTENTS

Table of Contents	1
Office Locations	2
Board Members	3
Planning Process	4
Mission and Vision Statements	5
Summary of 2013 Budget	6
Target Populations	7-8
Description of Service Categories	9-10
Division Services	11
Administrative Services Division	12
Behavioral Health Services Division	13-16
Child Welfare Services Division	17-19
Economic Support Division	19
Long Term Support Services Division	20-21
Program/Service Categories	22
Purchased and County Operated Services in Effect for 2013	23-35

WINNEBAGO COUNTY HUMAN SERVICES

OFFICE LOCATIONS

Human Services – Oshkosh
220 Washington Avenue
PO Box 2187
Oshkosh, WI 54903-2187



Website:

<http://www.co.winnebago.wi.us/human-services>

Phone: (920) 236-4600
Fax: (920) 236-4607
E-mail: dhs@co.winnebago.wi.us

Human Services – Neenah
211 N. Commercial Street
Neenah, WI 54956



Website:

<http://www.co.winnebago.wi.us/human-services>

Phone: (920) 729-4797
Fax: (920) 729-2790
E-mail: dhs@co.winnebago.wi.us

HUMAN SERVICES DIVISIONS

Administrative Services Division

Behavioral Health Division

Child Welfare Division

Economic Support Division

Long Term Support Division

WINNEBAGO COUNTY HUMAN SERVICES BOARD MEMBERS

Year 2013 (3 yr. terms)

Jerry Finch
515 Shreve Lane
Neenah, WI 54956
Phone: 725-6170 (home)
Cell: 213-2252
jervf@aol.com
Term exp. 12/31/2015

Michael Norton
1029 S. Main St., Apt. B
Oshkosh, WI 54902
Phone: 203-7785 (home)
mjn304@hotmail.com
Term exp. 12/31/2014

James Koziczowski (Chair)
104 Lexington Ct.
Neenah, WI 54956
Phone: 725-5575 (home)
jimcricket7@aol.com
Term exp. 12/31/2015

Rob Paterson
530 N. Main St.
Oshkosh, WI 54901
Phone: 303-9638
Term exp. 12/31/2013

Ron Kuehl
5776 St. Ives Rd.
Oshkosh, WI 54904
Phone: 235-6393 (home)
ronekuehl@new.rr.com
Term exp. 12/31/2013

Harold Singstock
229 N. Meadow St.
Oshkosh, WI 54902
Phone: 426-0543
singstockharold@att.net
Term exp. 12/31/2014

Larry Lautenschlager
1215 Carr Place
Oshkosh, WI 54901
Phone: 379-0795 (home)
236-2912 (work)
lauts4@aol.com
Term Exp. 12/31/2015

Tom Widener (Vice-Chair)
129 Richard Ave.
Neenah, WI 54956
Phone: 725-1156 (home)
twidersrl@aol.com
Term exp. 12/31/2015

Donna Lohry (Secretary)
511 W. Bent Ave.
Oshkosh, WI 54901
Phone: 235-8553
DonnaLohry@gmail.com
Term Exp. 12/31/2013

PLANNING PROCESS

The following information is made available as a part of the annual 2014 Budget planning process for the Winnebago County Department of Human Services. It is the intent to invite and consider the public's input as part of the Department's annual budget planning process which begins in June and culminates in October with the County Board Budget session. It should be noted that some aspects of the planning process occur continually throughout the year at the Winnebago County Human Services Board's regular monthly meetings. The exact times and locations of meetings can be obtained by contacting the Department of Human Services at (920) 236-4602 or the Winnebago County Clerk's office at (920) 236-4888. Additional information is available on the Winnebago County web-site: <http://www.co.winnebago.wi.us/county-clerk/meetings>

This year's planning process will again include public forums, which will be held within the major population centers on June 19 and 20, 2013. For your reference, the cover of this booklet provides information on the time and location of hearings. Individuals wishing to participate in these public forums are encouraged to do so and will have an opportunity to speak to the Department of Human Services Board. If special considerations regarding accessibility and/or translators are required, please contact Dorothy De Grace at the Department of Human Services at (920) 236-4602 (Oshkosh).

Individuals who are unable to attend a forum in person are encouraged to send written comments to the Department of Human Services offices. Such comments can be directed to:

Board Chairperson
Winnebago County Department of Human Services
220 Washington Avenue
PO Box 2187
Oshkosh WI 54903-2187
or via e-mail to: dhs@co.winnebago.wi.us

VISION STATEMENT

To be a leader in Human Services by fostering healthy, self-reliant and productive individuals and families.

MISSION STATEMENT

To serve our clients with professional, quality and cost-effective services that focus on prevention, protection, mental health, family integration, self-determination and recovery with respect for and in partnership with individuals, families, caregivers and the community.

**Winnebago County
2013 ADOPTED BUDGET
Human Services**

DESCRIPTION	AMOUNT
Intergovernmental	\$ 22,120,483
Public Services	\$ 2,116,914
Intergovernmental Services	\$ 4,000
Winnebago County Tax Levy	\$ 17,799,297
TOTAL REVENUES	\$ 42,040,694
County Labor	\$ 18,671,731
Travel	\$ 385,711
Capital	\$ 42,150
Operating / Contractural	\$ 22,941,102
TOTAL EXPENSES	\$ 42,040,694

TARGET POPULATIONS

HUMAN SERVICES

Target Population Description

Abused and Neglected Children – Includes a consumer and his family who is, or is alleged to be, abused or neglected as defined in Wisconsin Statutes, or is at the risk of being abused or neglected. This definition includes physical abuse, sexual abuse, neglect and emotional damage.

Adults and Elderly - Includes consumer age 18 or over whose services are directed at the improvement of physical and social functioning, assistance with daily living and preservation or restoration of the ability to live in a homelike environment and participate in community activities. This program includes frail, elderly and others, aged 65 and older, who are being served for reasons other than alcohol and other drug abuse, developmental disabilities or mental illness. Effective July 2010 Family Care eligible adult and elderly consumers are served by Lakeland Care District or via the IRIS program which administers the Medicaid Family Care benefit for Winnebago County residents.

Alcohol and/or Other Drug Abuse - Includes persons that uses alcohol and/or another chemical substance that has mind-altering effects to the extent that it interferes with or impairs physical health, psychological functioning, or social or economic adaptation, including occupational or educational performance and personal or family relations. It also includes a person whose use of alcohol and/or other drugs has resulted in a conviction for operating a motor vehicle while intoxicated, a Department of Transportation referral for an assessment to determine the existence of an AODA disability, or participation in the Drug Court Initiative. Other included activities are services to the community for the prevention of alcohol/drug abuse, identification of persons in need of AODA treatment and informing the public of services available.

Children and Family - Includes a child or family member(s) who has service needs not specified in the other target population categories. Activities may include those directed at improving family functioning and referrals to community services targeted to address specific needs for children and families.

Developmental Disability - The program is delivered to persons who have a disability attributable to brain damage, mental retardation, cerebral palsy, epilepsy, autism, or another neurological condition closely related to mental retardation or requiring treatment similar to that required for mental retardation, which has continued or can be expected to continue indefinitely and constitutes a substantial handicap to the afflicted individual. *As of July 1, 2010 Medicaid eligible adult and elderly consumers will be served by Lakeland Care District who administers the Medicaid Family Care benefit for Winnebago County residents.*

∞

Juvenile Justice - The program provides case management services to assist families in overcoming adolescent behavior problems such as delinquency, uncontrollability, run away, or truancy which have resulted in Juvenile Court intervention. Case management services begin with an assessment of the youth and family, followed by case plan development and implementation based on the identified strengths and needs of the family. This may include recommendations for additional assessments and services such as AODA or mental health counseling. Social workers assist parents and youth to facilitate needed changes in the family and monitor progress made in meeting the conditions of the juvenile court order, consent decree, or deferred prosecution agreement. Workers also partner with school personnel to support the educational needs of the youth. When necessary, court ordered sanctions for violations of rules and court conditions are utilized to hold youth accountable to their court orders. Out of home placements are made when youth cannot safely remain in the home.

Mental Health - The program is delivered to persons who are serviced for the purpose of treating mental illness or its personal or social effects. The objective of treatment and other services is to ameliorate the effects of mental illness and improve the ability of consumers to function in personal, social and vocational roles. The Mental Health Target Population covers persons with chronic mental health problems, including both adults with chronic mental illness and children and youth with severe emotional disturbance who are unable to perform essential personal and social roles appropriate to their age, and who require or receive personal assistance or supervision to carry out activities of daily living or to participate in community living.

Physical and Sensory Disability - The program is delivered to persons under age 65 who have a physical disability which impairs their mobility, or are blind or visually impaired, or are deaf or hard of hearing and receive services to assist them to achieve their maximum level of functioning and independence in social roles, and to fully access and participate in community life. The target population also includes programming designed to identify persons in need of services and to prevent physical disabilities. *As of July 1, 2010 Medicaid eligible adult and elderly consumers will be served by Lakeland Care District who administers the Medicaid Family Care benefit for Winnebago County residents*

Economic Support - Represents Winnebago County citizens who due to personal economic situations qualify for state or federal economic programs to include: Wisconsin Works, Emergency Energy Assistance, Medicaid Transportation, Medicaid Healthcare, Child Care Assistance, FoodShare and various other including Emergency Housing Assistance.

DESCRIPTION OF SERVICE CATEGORIES

HUMAN SERVICES

Service Category Description

Child Day Care – Crisis/Respite - Services to children that includes care in settings such as a day care center, the home of another, or in their own home. The purpose of these services is to meet crisis or respite needs, prevent or remedy abuse or neglect, alleviate stress in the family, or preserve the family unit.

Community Living/Support Services - Services providing support to consumers in order to maintain a natural living arrangement or aid in the adaptation to physical or communicative barriers. Skill development, adult day care, meal programs, respite care, interpreter services, adaptive equipment, housing and energy assistance, and the coordination of services.

Community Prevention, Access and Outreach - Services to at-risk population in the community to include persons likely to have a problem which can potentially be alleviated by the delivery of human services; handling individual inquiries for help; providing accessibility to community health programs; providing advocacy and providing prevention activities to enhance the physical health and improve social and community functioning by making constructive changes in community conditions; and providing public information and referral services to satisfy inquiries; and to identify specific resources in the human services delivery system.

Community Residential Services - Services to consumers in licensed adult family homes, child foster homes, group homes, shelter care and community-based residential facilities.

Community Support Program - The provision of a network of coordinated care and treatment services to adults with serious and persistent mental illness and to chronic alcoholic consumers. These services may occur in natural or supportive service settings delivered by an identified provider to ensure ongoing therapeutic involvement, reduce the disabling effects of mental illness or alcoholism and assist consumers to access and participate in the community.

Community Treatment Services - The provision of treatment services in outpatient medical settings, as well as supervision of juvenile justice consumers in the community and occupational and physical therapy, speech and language therapies. Services delivered in a mental health outpatient setting include treatment for the purpose of ameliorating the effects of various mental disorders and to improve personal, social and family functioning. Services delivered to youth in the juvenile justice system under formal or informal supervision or in restitution programs. Services are designed to monitor behavior, prevent continued delinquent activity, strengthen family ties, assist in successful involvement in the community and fulfill any obligations ordered by the court or other juvenile justice agency. AODA treatment services are designed to improve personal, social, vocational and family functioning and prevent further deterioration of physical health.

Inpatient and Institutional Care - Services delivered in settings such as state mental health institutes, centers for developmental disabilities, general hospitals, CBRF's certified as inpatient treatment programs, residential care centers and juvenile correctional institutions. Inpatient treatment is for the purpose of providing treatment of mental and substance abuse disorders and restoring health, personal and social functioning.

Institution for Mental Diseases - Services are defined as days of care provided in an IMD licensed nursing home to persons meeting the mentally ill consumer characteristic.

Investigations and Assessments - Services to consumers that includes screening, assessment, diagnosis, case planning or determining the existence or nature of a specific problem. Services include child abuse and neglect investigations, reports to the court required under Chapters 48, 51 and 55 Wisconsin Statutes, consumer intake assessments and activities related to procedures established by juvenile court guidelines.

Specialized Transportation - The provision of transportation and transportation related supervision to the elderly, handicapped or other persons with limited ability to access needed community resources. Includes transportation centered on improving a person's general mobility and ability to perform daily tasks independently such as shopping, visiting with friends, competitive employment, etc.

Supported Employment - Supported Employment is competitive work in an integrated work setting for individuals who, because of their handicaps, need ongoing and/or intensive support services to find and perform this work.

Supportive Home Care - The provision of services to maintain consumers in independent or supervised living in their home or the home of their friends or relatives that help them meet their daily living needs, ensure their well-being and/or reduce the likelihood that they will be placed into alternate living arrangements. Services may include, but are not limited to, household care, personal care and supervision. Includes supervised apartment living, senior companion activities, telephone reassurance, friendly visiting and home health care.

Work Related and Day Services - Services delivered for the purpose of promoting vocational participation and self-sufficiency. Services include vocational counseling or activities that promote participation in work or job placement services. Also included is day center services to persons to develop skills necessary for community living.

DIVISION SERVICES

The Department services are categorized within the following five divisions:

ADMINISTRATIVE SERVICES DIVISION

Administrative Services encompasses a range of responsibilities, which provide the overall supervision and management of the Department of Human Services. Administrative Services ensure that the programs and objectives of the Department are developed and maintained in accordance with the philosophies and objectives of the Winnebago County Board of Supervisors and County Executive. In addition, the Administrative staff ensures that the programs of the department are carried out in a cost efficient manner, ensuring that all mandated state and federal human service programs are delivered in accordance with established requirements.

Administrative Services include:

- Providing overall direction and management of personnel, financial and service programs of the department.
- The development of the mission, infrastructure and operating procedures for the department.
- Compliance with state, federal, local laws and regulations.
- The provision of long-range goals and directions for the department in achieving strategic plans.
- Preparation, monitoring and management of the department's annual operating budget.
- The negotiation of annual contracts with service providers.
- The evaluation of service delivery inclusive of consumer feedback.
- Participation in labor contract negotiations as requested by Human Resources.
- Establishment of service priorities and applicable consumer "wait lists".

BEHAVIORAL HEALTH SERVICES DIVISION

The Behavioral Health Division is divided into two programs:

- Alcohol and Other Drug Abuse Services
- Mental Health Services

Alcohol and Other Drug Abuse Services

Alcohol and other drug abuse can best be defined by understanding our service system philosophy. Our stated philosophy is:

We believe that alcoholism and other drug dependency is a disease which, left untreated, robs individuals of a happy, fulfilling life, and ultimately can result in death. This disease is characterized by dependency on alcohol/drugs to the extent that the individual's health is impaired or endangered, and his or her social and/or economic functioning is disrupted. We believe that alcoholism and other drug abuse/dependency are treatable illnesses, and that individuals who are suffering from, or adversely affected by these illnesses, should be afforded and have the right to obtain prompt, quality care and counseling. We recognize and accept that relapses are part of this chronic disease and such relapses should not be used in any way to foster shame or guilt.

The AODA service system is a blend between *contracted* and *county operated* services. Between the two, a full continuum of care exists from prevention to inpatient services.

Contracted Services:

- **Outpatient Service:** Outpatient services are organized nonresidential recovery services provided to persons with a substance related disorder in regularly scheduled individual or group therapy sessions.
- **Residential Service:** Residential services are provided in community based residential facilities (CBRF) licensed and certified by the State Department of Health Services. Residential services are designed to serve persons who are in need of a safe and stable living environment in order to develop sufficient recovery skills. Residential services are of two types – extended care and transitional.
- **Inpatient Service:** Inpatient Services are medically monitored, or managed services, provided in a community based residential facility (CBRF) or a hospital.

- **Detox/ER/Physician:** Detoxification services are designed to achieve safe and comfortable withdrawal for alcohol and drugs. Detox can be provided in various settings including hospitals, community based residential facilities, or home.
- **Other:** On occasion, expenses associated with an ambulance/police transport of an individual between hospitals are paid by our department.

County Operated Services:

The Department of Human Services provides a wide range of services that are designed to prevent problems; offer assistance to those trying to access services; offer assistance to those in crisis; and provide specialty residential services to those with a serious and persistent mental illness and an alcohol/drug disorder.

- **Prevention Services:** Since the early 1980's, our department has operated a prevention service. Over the years a variety of strategies were used, all designed to offer the community-at-large better and more accurate information about alcohol and drugs, so more informed decisions could be made by individuals choosing whether or not to use any mood-altering chemical. The Bright Futures Initiative (BFI) is part of our Prevention Services.
- **Intervention Services:** Five and one half (5.5) full-time equivalent AODA counselors / case managers act as the county's single point of entry for AODA and OWI services, including our SSTOP initiative, Misdemeanor Drug Diversion Program, Adolescent outpatient, drug court outpatient services, etc. The counselors assess, authorize and case manage individuals in need of alcohol and/or drug treatment services.
- **Outpatient services:** While limited at this point, it is expected that our current department staff will provide some outpatient services for adults and children / adolescents. At this time, service capacity in the private sector can be an issue especially when considering payment source.
- **Drug Court:** In 2006, after a year of planning, Winnebago County launched a new Drug Court initiative. This initiative is designed to offer non-violent substance dependent offenders an opportunity to successfully complete alcohol/drug treatment as an alternative to incarceration. The program is intended for Winnebago County residents whose crimes were motivated because of their addiction problem. This initiative is a collaborative effort among many stakeholders (courts,

treatment providers, prosecutors, defense attorneys, law enforcement, including our Sheriff's Office, and others).

Mental Health Services

Our Mental Health Program is guided by the principle of least restrictive placement; that individuals can improve and recover from their mental or emotional condition; and those recipients of services must be involved in the formulation of their treatment plan.

The division provides a full range of mental health services, either directly with county staff or through contract agencies.

Contracted Services:

- Inpatient services are medically managed services provided in a general or specialty hospital. Both acute care and long-term inpatient services are available within our continuum of care.
- Residential services are generally transitional in nature and provided in licensed community based residential facilities (CBRF's). These services focus on and provide a variety of habitation or rehabilitation services to assist the consumer in developing the necessary skills to return to independent living.
- Vocational services are utilized to assist consumers in maximizing their work potential and to provide some economic self-sufficiency.

Operated Services:

- ***Community Support Program Team:*** The purpose of this team is to provide comprehensive community based care in the least restrictive environment consistent with individualized needs. Services include psychiatric evaluation, medication prescription and monitoring, supportive counseling, psychosocial rehab to help with daily living skills, vocational involvement, etc.
- ***Family Services Team:*** This team works with children and their families who are court ordered into treatment due to abuse, neglect, or delinquent behavior. Their goals are to help families stay intact whenever possible, reunite if separated, and reduce the possibility of out-of-home placement.

Beginning in 2008, eligible children served by this team were enrolled in the Comprehensive Community Service program. In 2009, an intensive in-home treatment team (therapist and case manager) was established. In 2013 a second Team has been added.

- ***Psychotherapy Team:*** This team works with indigent or working poor people with no or very limited insurance or only medical assistance. These people are often overwhelmed emotionally and seek help, or are referred by the community. The goal is to quickly lessen distress/danger and return them to adequate functioning.
- ***Case Management Team/Comprehensive Community Service Team:*** This team's services include psychiatric evaluation; medication prescription and monitoring; supportive psychotherapy; assistance with activities of daily living; vocational assessment and support; crisis management, a range of care similar to Community Support Program, but to a somewhat lesser disabled consumer.
- ***Crisis Services:*** Our department's Mental Health/AODA crisis service system has various components: a mobile crisis component which operates 16 hours per day; and the above referenced phone service which is in operation 24 hours per day, 365 days per year. An on-call pager system is currently available thus offering 24 hour per day mobile response.
- ***Residential Services:*** Summit House is an eight bed community based residential facility operated by the Department of Human Services and designed specifically for adults experiencing a crisis situation that does not require a hospital admission, but can not be safely resolved in the person's home. In addition, this facility houses our department's 24 hour Crisis Intervention/Hotline telephone service.
- ***Residential Services:*** Toward Tomorrow is a transitional living facility designed specifically to serve individuals with a severe and persistent mental illness. Individuals served in this facility are those identified as needing care, treatment or other recovery oriented services necessary to transition back into an independent community living situation. Anticipated length of stay is less than one year, but more than just a few weeks. Care, treatment or other services encompass not only psychiatric care, medication monitoring, supervision, case management and supportive services, but also the development of independent living, social and vocational / employment skills necessary to resume life in the community. This facility will also offer some limited crisis diversion services.

CHILD WELFARE SERVICES DIVISION

Access Services Team

The Access Team is the starting point where requests for child protective services are evaluated. Initial screening, intake, information and referrals are provided. This unit completes investigation of abuse or neglect of children. Information and referral to community services is an additional part of this team's response to calls from the community. Cases requiring ongoing services are referred to another unit within the agency responsible for ongoing services.

Child Protective Services Ongoing Team

Child Protective Services teams work with families experiencing a variety of problems. These problems may include child abuse or neglect, mental health issues, money management issues, domestic violence, or alcohol and drug abuse.

When it becomes necessary for Child Protective Services to intervene in a family, the main consideration is the safety of the children within the family structure. Services are provided to the entire family as a unit, keeping in mind that the goal is to reduce or eliminate the problems that influence the immediate safety of the children. Family-focused intervention is designed to preserve the family unit when appropriate. It attempts to build on the strengths of the family members to prevent breakup. This type of service focuses on the underlying issues, rather than the obvious symptoms that brought the family to our attention.

Services include individual, family, and group counseling; in-home parent training; home management training; budget counseling; advocacy and permanency planning for children. Staff on these teams work closely with the courts in an effort to reinforce the importance of providing a safe and nurturing environment for children. Team workers make referrals to area service providers, such as hospitals, counseling clinics, AODA resources, mental health facilities and family training services. Child Protective services work involves placement of some children into foster homes or Residential Care facilities. Team Social Workers provide case management services in such cases.

Juvenile Intake Services

Juvenile Court Intake serves the courts by screening all child and juvenile referrals submitted by the Department of Human Services, the police departments, schools, parents and other child serving agencies. It functions under the guidelines established by the circuit courts. Intake prepares and makes recommendations to the court at all secure and non-secure custody review hearings.

The Juvenile Restitution Program is provided where juvenile offenders can compensate their victims and the community through dollars earned or community service.

Juvenile Justice Services Ongoing Team

Juvenile Justice Services teams work with families experiencing problems, which may include juvenile delinquency, or a child who is chronically truant, uncontrollable, or a runaway.

When Human Services intervenes in a family due to the actions of one member, services are provided to the family as a unit, rather than just the individual, whenever possible. The goal of this family-focused approach is to assist families in overcoming problems that may, at times, pressure the family unit to dissolve. This type of approach addresses the underlying problems contributing to the disturbance and emphasizes the integrity and well-being of the family.

Services include background social studies for the court; individual, family and group counseling; family training; home management training; budget counseling; and advocacy. Team workers make referrals to and coordinate services with, area service providers such as hospitals, counseling clinics and chemical dependency programs. Case management services are also provided to youth and families should out-of-home placements into foster care, group home care, Residential Care facilities, or Correctional facilities become necessary.

The Juvenile Justice North team coordinates the Bridges Truancy Program, which is an effort to divert from the court system, youth who are chronically truant, but otherwise not delinquent. A positive approach to dealing with the truancy is utilized, rather than attempting consequences through the Juvenile Court system.

Resource Team Services

The Resource Team administers and supervises placements and services for children and youth. The Resource Team oversees Child Substitute Care, Shelter Care, and Kinship Care. Child Substitute Care Services provides the recruitment, training and licensing of foster parents and supervises the placement of children in foster homes, group homes and institutions. The main emphasis of substitute care services is to provide temporary, short-term placement for children while treatment and rehabilitation efforts are made in order to reunite the natural family. Independent Living Skills are assessed and enhanced for youth 15 years of age and older.

ECONOMIC SERVICES DIVISION

The Economic Services Division is divided into two program areas:

- Family Team
- Long Term Support

Family Case Managers assist families and able-bodied single adults with their public benefits such as Child Care Assistance, Medicaid/Badger Care Plus, and Food Share. They also operate the Food Share Employment and Training program to assist Food Share recipients who are looking for employment.

Economic Support Specialists on the Long Term Support team determine eligibility for Medicaid and Food Share for the elderly and disabled, and for disabled parents of minor children. This team also determines eligibility for Family Care.

Economic Support is part of a 10 county consortium sharing responsibility for operating a call/change center with Calumet, Green Lake, Kewaunee, Manitowoc, Marquette, Outagamie, Sheboygan, Waupaca and Waushara counties.

LONG TERM SUPPORT DIVISION

Teams within the division support children with disabilities and their families with a long term support need, including families with a child with a developmental delay; provide information and assistance and benefits and options counseling to seniors and adults with developmental and/or physical disabilities, including assisting eligible persons with nutritional and transportation needs.

The Long Term Support Division also provides adult protective services such as elder abuse investigation/interventions, conservatorships, guardianships, and durable power of attorney for finances and health care.

In addition, the Long Term Support Division oversees the service coordination provided by the contracted case management agency that also provides Birth to Three services.

Family Support Team

The staff of this team helps families and individuals, typically aged birth to eighteen and for some individuals to age twenty-three. The goal is to help families better meet the needs of a son or daughter with a disability, as well as, supporting parents as caregivers. Staff helps families and individuals navigate the services and school systems, assist with locating and contracting with community-based resources, and/or arrange funding to purchase individualized services and supports, as well as, help a person's transition from school to adult services. This team also works with children's autism services and often collaborates with other Human Service divisions to support children through the Children's MA Waiver Program.

Aging and Disability Resource Center (ADRC)

The ADRC is a resource center that provides the following services: Information and Assistance to the general public about services, resources and programs, as well as, connect people with those services; Long Term Care Options Counseling to offer consult and advice about the available options to meet individual's long term care needs; Benefits Counseling assists individuals by providing accurate and current information on private and government benefits and programs; Prevention and Early Intervention efforts are intended to keep people healthy and independent; Access to the Family Care benefit is the responsibility of the resource center to enroll

eligible, interested members in a Managed Care Organization or the self directed IRIS program.

The goal of these services and programs is to give seniors and adults with disabilities options and support so they may remain independent, contributing, and participating members of the community in which they live.

The Winnebago County ADRC Committee, which also serves as the Commission on Aging, advises the services at the county level. The Winnebago County Aging Services are a part of the ADRC. Aging services are specifically designed to enhance nutrition, health and wellness for all individuals 60 years and older within our communities through the Older American Act. Specialized transportation funding is managed within the Long Term Support division.

Also within the Aging and Disability Resource Center is the provision of Adult Protective Services, such as adults at risk and elder abuse investigations/interventions; working with individuals, community resources and the courts in coordinating other adult protective services, including guardianships.

PROGRAM / SERVICE CATEGORIES

Child Day Care - Crisis/Respite

Supportive Home Care

Specialized Transportation and Escort

Community Living/Support Services

- Adult Day Care
- Respite Care
- Housing/Energy Assistance
- Daily Living Skills Training
- Interpreter Services and Adaptive Equipment
- Congregate Meals
- Home Delivered Meals
- Family Planning
- Protective Payment/Guardianship
- Case Management

Investigations and Assessments

- Court Intake and Studies
- Intake Assessment

Community Support

- Community Support
- Comprehensive Community Service

Work Related and Day Services

- Work Related Services
- Day Center Services - Non-medical

Supported Employment

Community Residential Services

- Adult Family Home
- Foster Home
- Group Home
- Shelter Care
- Community Based Residential Facility
- Detoxification

Community Treatment Services

- Juvenile Probation and Supervision Services
- Juvenile Reintegration and Aftercare Services
- Restitution
- Crisis Intervention
- Counseling/Therapeutic Resources
- Day Treatment - Medical

Inpatient and Institutional Care and Institution for Mental Disease

- Juvenile Correctional Institution Services
- Detoxification – Hospital Setting
- Inpatient
- Residential Care Center
- DD Centers/Nursing Home

PURCHASED and COUNTY OPERATED SERVICES IN EFFECT FOR 2013

The County and Contracted Services Listings represent a point-in-time and are subject to change throughout the course of the current calendar year. The amounts stated are approximated based upon the projected number of persons to be serviced and the related cost of the services to be provided.

ADMINISTRATIVE SERVICES DIVISION

VENDOR	PROGRAM NAME	AMOUNT
LANGUAGE TRANSLATION SERVICES		
LANGUAGE LINE SERVICES, INC. - Statewide	Telephone Translation Services	\$5,000

BEHAVIORAL HEALTH DIVISION

VENDOR	PROGRAM NAME	AMOUNT
COMMUNITY RESIDENTIAL SERVICES		
BLANDINE HOUSE, INC. – Fond du Lac	AODA Residential Treatment	\$50,000
BROTOLOC HEALTH CARE SYSTEMS, INC. (Brotoloc North) – Statewide	Community Based Residential Facility (CBRF)	\$240,000
CLEARVIEW LONG – Juneau	Residential Services	\$100,000
FRIENDS OF WOMEN IN RECOVERY, INC. – Fond du Lac	Community Based Residential Facility	\$50,000
MAYO CLINIC HEALTH SYSTEM - FRANCISCAN MEDICAL CENTER, INC. – La Crosse	Residential Services	\$37,000
THE MOORING PROGRAMS, INC. – Casa Clare Appleton	Residential Services	\$268,000
THE MOORING PROGRAMS, INC. – Mooring House – Appleton	Transitional Residential (CBRF)	\$332,000
NOVA COUNSELING SERVICES, INC. – Oshkosh	Residential Inpatient, Transitional/Extended Care	\$315,000
PRODUCTIVE LIVING SYSTEMS, INC. – Altoona	Community Based Residential Facility	\$150,000
REHABILITATION HOUSE, INC. – Bletzinger House Neenah	Community Based Residential Facility/Adult Family Home	\$315,000
WINNEBAGO COUNTY OPERATED - SUMMIT HOUSE – Oshkosh	Residential Crisis Facility/Crisis Intervention Helpline	\$550,000
WINNEBAGO COUNTY OPERATED – TOWARD TOMORROW – Oshkosh	Residential Services	\$400,000
COMMUNITY TREATMENT SERVICES		
AFFINITY HEALTH SYSTEMS, INC – MERCY MEDICAL CENTER and ST. ELIZABETH – Oshkosh/Appleton	AODA Outpatient Services	\$41,500
ESPRIT COUNSELING & CONSULTING – Neenah	AODA Outpatient Services	\$5,000
FAMILY SERVICES OF NORTHEAST WISCONSIN, INC. – Menasha	AODA Outpatient Services	\$5,000

BEHAVIORAL HEALTH DIVISION

VENDOR	PROGRAM NAME	AMOUNT
COMMUNITY TREATMENT SERVICES (cont.)		
MINISTRY BEHAVIORAL HEALTH – Stevens Point	AODA Outpatient Services	\$80,000
NOVA COUNSELING SERVICES, INC. – Oshkosh	AODA Outpatient Services	\$17,000
OPTIONS TREATMENT PROGRAMS, INC. – Appleton	AODA Outpatient Services	\$80,000
OSHKOSH COUNSELING CENTER, INC. – Oshkosh	AODA Outpatient Services	\$10,000
SAMARITAN COUNSELING CENTER OF THE FOX VALLEY – Menasha	AODA Outpatient Services	\$10,000
THEDACARE BEHAVIORAL HEALTH, INC. – Menasha	AODA Outpatient Services	\$165,000
WELLHOEFER COUNSELING – Oshkosh	Therapist/Service Facilitator	\$34,500
WINNEBAGO COUNTY OPERATED CLINICAL SERVICES – Oshkosh/Neenah	Mental Health/AODA Outpatient Services, CSP, Case Management, Crisis and CCS Services	County Labor Budget
COMMUNITY LIVING/SUPPORT SERVICES		
BEST FRIENDS OF NEENAH/MENASHA, INC. – Neenah	School Based Mentoring Program	\$4,566
COMMUNITY FOR HOPE OF GREATER OSHKOSH, INC. – Oshkosh	Yellow Ribbon Suicide Prevention Program	\$10,686
FAMILY SERVICES OF NORTHEAST WISCONSIN, INC. – Green Bay	Parent Connections, Parent Aide Program, Nurturing Program (HOPE) and Active Parenting	\$138,441
FRIENDSHIP PLACE – Neenah	Drop-In Center for the Mentally Ill	\$10,000
HOPE AND CARE CENTER – Oshkosh	Hope and Care Center	\$10,000
OPTIONS LAB, INC. – Appleton	Specimen Collection and Lab Drug Testing	\$30,000

BEHAVIORAL HEALTH DIVISION

VENDOR	PROGRAM NAME	AMOUNT
INPATIENT and INSTITUTIONAL CARE		
AFFINITY HEALTH SYSTEMS, INC - MERCY MEDICAL CENTER and ST. ELIZABETH – Oshkosh/Appleton	Inpatient Services	\$373,500
AGNESIAN HEALTHCARE, INC. – Fond du Lac	Inpatient Services	\$75,000
BROWN COUNTY MENTAL HEALTH CENTER – Green Bay	Inpatient Services	\$50,000
FOND DU LAC COUNTY DEPARTMENT OF COMMUNITY PROGRAMS – Fond du Lac	Acute Psychiatric Inpatient Services	\$375,000
THEDA CLARK MEDICAL CENTER – Appleton	Emergency Room, Inpatient Psych and Detoxification	\$365,000
TREMPEALEAU COUNTY HEALTH CARE CENTER – Whitehall	Institute for Mental Disease, Farnam House	\$375,000
WINNEBAGO / MENDOTA MENTAL HEALTH INSTITUTE (State facilities) – Winnebago/Madison	Inpatient Services	\$526,000

CHILD WELFARE DIVISION

VENDOR	PROGRAM NAME	AMOUNT
COMMUNITY RESIDENTIAL		
CHOICES TO CHANGE, INC. – Plover	Group Home	\$200,000
CHRISTIAN GROUP HOME – Green Bay	Group Home	\$75,000
CLINICARE CORP – MILWAUKEE ACADEMY – Milwaukee	Residential Care Center	\$100,000
ETHAN HOUSE, INC. – Green Bay	Group Home	\$70,000
FAMILY SERVICES OF NORTHEAST WISCONSIN, INC. – Neenah	Residential Treatment for Children, Silvercrest Group Home	\$929,000
LUTHERAN SOCIAL SERVICES OF WISCONSIN AND UPPER MICHIGAN, INC. – Statewide	Family Partnership Initiative Program, Homme Home Residential Care Center	\$440,000
NORTHWEST PASSAGE, LTD – Webster	Residential Treatment Center	\$110,000
OCONOMOWOC DEVELOPMENTAL TRAINING CENTER – Oconomowoc	Residential Treatment Center	\$285,000
ORION FAMILY SERVICES, INC. – Madison	Group Home	\$70,000
POSITIVE ALTERNATIVES, INC. – Menomonee Falls	Group Home	\$50,000
RAWHIDE, INC. – New London	Residential and Foster Home Care	\$92,000
SIERRA GROUP HOME – White Lake	Group Home	\$123,000
ST. AEMILIAN-LAKESIDE, INC. – Milwaukee	Residential and Foster Home Care	\$80,000
THOMPSON SHELTER CARE HOME, LLC. – Shawano	Shelter Care Home	\$633,200
TOMORROW'S CHILDREN, INC. – Waupaca	Residential Care	\$250,000
WILLOWGLEN ACADEMY – Plymouth	Residential Care Center	\$107,000

CHILD WELFARE DIVISION

VENDOR	PROGRAM NAME	AMOUNT
COMMUNITY RESIDENTIAL (cont.)		
WISNEWSKI GROUP HOME – Mosinee	Group Home	\$60,000
WYALUSING ACADEMY – Prairie du Chien	Residential Facility	\$106,000
COMMUNITY TREATMENT		
3M ELECTRONIC MONITORING – Florida	Electronic Monitoring	\$52,000
BOARD OF REGENTS, UW-OSHKOSH, CENTER FOR CAREER DEVELOPMENT AND EMPLOYABILITY TRAINING – Oshkosh	Truancy Intervention Program Coordinator	\$63,000
COOPERATIVE EDUCATIONAL SERVICE AGENCY #6 – Oshkosh	Integrated Services Program, Counseling/Therapeutic, Daily Living Skills/Respite Services	\$378,265
FAMILY SERVICES OF NORTHEAST, WISCONSIN, INC. – Green Bay	Law Education Group, Step-Parent Adoption Studies	\$14,410
FAMILY TRAINING PROGRAM, INC. – Neenah	Family Training Program	\$635,820
MITCHELL FRANK – Oshkosh	Anger Management	\$1,000
ALLEN HAUER, PhD – Oshkosh	Psychological Evaluation and Consulting Services	\$51,200
OPTIONS TREATMENT PROGRAM – Appleton	AODA Outpatient Services	\$15,000
OSHKOSH AREA SCHOOL DISTRICT – Oshkosh	Second Chance Education Program	\$77,815
PROFESSIONAL SERVICES GROUP, INC. – Winnebago County	Aftercare Program, Team Therapy Services, Supervised Visitation	\$577,908
REACH COUNSELING SERVICES, INC. – Menasha	Sexual Abuse Counseling Services	\$25,000
YOUTH-GO	Bridges Mentoring Program and PACT	40,252

CHILD WELFARE DIVISION

VENDOR	PROGRAM NAME	AMOUNT
INSTITUTIONAL CARE		
OUTAGAMIE COUNTY – Appleton	Juvenile Secure Detention	\$395,000
CHILDREN FOSTER HOMES		
ADVOCATES FOR HEALTHY TRANSITIONAL LIVING, LLC – Green Bay	Treatment Foster Care	\$100,000
AMERICAN FOUNDATION OF COUNSELING SERVICES, INC. – Green Bay	Treatment Foster Care	\$60,000
CHILDREN'S SERVICE SOCIETY OF WISCONSIN – Milwaukee	Treatment Foster Homes	\$200,000
COMMUNITY CARE RESOURCES AND PROGRAMS, INC. – Middleton	Individual Foster Homes	\$400,000
FAMILY CARE SPECIALISTS – Sheboygan	Treatment Foster Care	\$108,000
FAMILY WORKS PROGRAMS, INC. – Madison	Treatment Foster Care	\$50,000
HOPEFUL HAVEN, INC. – Fond du Lac	Treatment Foster Care	\$100,000
LUTHERAN SOCIAL SERVICES OF WISCONSIN AND UPPER MICHIGAN, INC. – Statewide	Treatment Foster Care	\$70,000
MACHT VILLAGE PROGRAMS – DePere	Treatment Foster Care	\$50,000
WINNEBAGO COUNTY DHS FOSTER HOMES (All Winnebago County)	Individual Foster Homes	\$1,700,000

ECONOMIC SERVICES DIVISION

VENDOR	PROGRAM NAME	AMOUNT
COMMUNITY LIVING/SUPPORT SERVICES		
ADVOCAP, INC. – Fond du Lac	General Poverty Case Management	\$80,000
DAY BY DAY WARMING SHELTER – Oshkosh	Warming Shelter	\$5,000
ENERGY SERVICES, INC. – Madison	Wisconsin Home Energy Assistance Program (WHEAP)	\$251,625
FOX CITIES COMMUNITY HEALTH CENTER - Menasha	Preventive Health Care Program	\$27,000
UW OSHKOSH – Oshkosh	Living Healthy Community Clinic	\$126,900

LONG TERM SUPPORT

VENDOR	PROGRAM NAME	AMOUNT
SUPPORTIVE HOME CARE		
BORTSCREATION, LLC (d/b/a Senior Helpers) - Appleton	Supportive Home Care	\$10,000
CAREGIVERS OF WISCONSIN, INC. (d/b/a Home Helpers/Direct Link) – Appleton	Supportive Home Care	\$8,500
CEREBRAL PALSY OF MIDEAST WISCONSIN, INC. - Oshkosh	Supportive Home Care, Respite	\$150,000
COMPASSIONATE HOME HEALTH CARE - Appleton	Supportive Home Care	\$15,000
MR CARES, INC – Menasha	Supportive Home Care	\$10,000
PREFERRED HOME HEALTH CARE, INC. – Oshkosh/Neenah/Menasha	Supportive Home Care, Home Health Care, Respite Services	\$65,000
QUALITY HOME CARE OF OSHKOSH, LLC – Neenah/Menasha/Oshkosh	Supportive Home Care, Respite Care	\$260,000
SOUTHERN HOME CARE SERVICE, INC. d/b/a Res-Care, Inc. - Oshkosh	Supportive Home Care	\$15,000
VALLEY VNA – Neenah/Menasha/Oshkosh	Supportive Home Care, Community Living	\$25,000
WE CARE SENIOR CARE, INC (d/b/a Home Instead Senior Care #203) – Appleton	Non-medical Homecare	\$45,000
SPECIALIZED TRANSPORTATION		
AMERICAN RED CROSS OF EAST CENTRAL WI – Oshkosh	Volunteer Services: Transportation, Peer Counseling Program, Inter City Medical Transportation	\$132,500
CITY OF APPLETON/VALLEY TRANSIT – Neenah/Menasha	Transit Services for Elderly & Disabled	\$69,587
CITY OF NEENAH – Neenah	Neenah/Menasha Dial-A-Ride	\$20,000
CITY OF OSHKOSH – Oshkosh	Transportation to the Elderly, Cabulance, Inter-City Service, Rural, Dial-A-Ride	\$333,033

LONG TERM SUPPORT

VENDOR	PROGRAM NAME	AMOUNT
SUPPORTED EMPLOYMENT		
CLARITY CARE, INC. – Oshkosh	Vocational Services	\$3,500
VALLEY PACKAGING INDUSTRIES, INC. - Appleton	Sheltered and Supported Employment	\$5,000
COMMUNITY LIVING/SUPPORT SERVICES		
ADVOCAP, INC. – Oshkosh/Neenah	Congregate & Home Delivered Nutrition Program	\$945,282
APPLIED BEHAVIOR ANALYSTS, LLC – Green Bay	Autism Treatment Services	\$50,000
BERTRAND SCHMITZ CONSULTING SERVICES – Appleton	Autism Treatment Services	\$20,000
CITY OF MENASHA – Menasha	Menasha Senior Center, 60 Plus Health Screening Program	\$49,292
CITY OF OSHKOSH – Oshkosh	Health and Wellness Services, Program Services	\$41,078
CLARITY CARE, INC. – Oshkosh	Apartment Living Program, Home Health	\$45,000
CLIFTONLARSONALLEN, LLP – Oshkosh	Fiscal Intermediary Service	\$20,000
COOPERATIVE EDUCATIONAL SERVICE AGENCY #6 – Oshkosh	Integrated Services Program, Counseling/Therapeutic and Daily Living Skills/Respite Services	\$378,265
FOX VALLEY GUARDIANSHIP & PAYEE SERVICES, LLC – Neenah	Corporate Guardianship, Representative Payee	\$10,000
GOODWILL INDUSTRIES OF NORTH CENTRAL WISCONSIN, INC. – Oshkosh/Neenah/Menasha	Early Intervention Program, Beyond the Boundaries of Autism	\$769,050
GUARDIAN PAYEE SERVICES, INC. – Omro	Corporate Guardianship	\$12,000
HAVEN OF HOPE DAY CARE, INC – Little Chute	Day Services – Children and Adults	\$10,000
HEALTHY CONNECTIONS, LLC – Appleton	Counseling and Therapeutic, Daily Living Skills	\$25,000

LONG TERM SUPPORT

VENDOR	PROGRAM NAME	AMOUNT
COMMUNITY LIVING/SUPPORT SERVICES (cont.)		
INNOVATIVE SERVICES, INC. – Green Bay	Psycho-Social Rehabilitation/Youth Services	\$65,000
INTEGRATED DEVELOPMENT SERVICES, INC. – Madison	Autism Treatment Services	\$42,000
JASPER PICKETT FOUNDATION – Pickett	Pickett CommunityCenter Director	\$20,916
STEVEN KLEIN, PhD – Appleton	In-Home Autism Behavioral Treatment	\$500,000
LUTHERAN SOCIAL SERVICES OF WISCONSIN AND UPPER MICHIGAN, INC. – Appleton/Oshkosh/Neenah/Menasha	Adult Day Services, Older Adult Mental Health Program, Family Preservation Program	\$104,064
NEENAH/MENASHA YMCA – Neenah/Menasha	Older Adult Health Wellness Services	\$14,000
OMRO AREA COMMUNITY CENTER – Omro	Community Center Director	\$23,200
OSHKOSH COMMUNITY YMCA – Oshkosh	Older Adult Outreach Program	\$10,000
OSHKOSH FAMILY, INC. – Oshkosh	Administrative Services, Corporate Guardianship, Weekend Meals on Wheels, Caregiver Coalition, Home Delivered Meals	\$181,936
SAFEKEEPING, INC. – Oshkosh	Guardianship/Representative Payee Services	\$5,000
VALLEY VNA HEALTH SYSTEMS – Neenah	Home Delivered Meals	\$7,920
WADE, ANGELA – Oshkosh	Behavior Analyst	\$5,000
WINNEBAGO COUNTY HEALTH DEPARTMENT – Winnebago	Evidenced Based Prevention Program	\$9,676
WINNEBAGO COUNTY EXTENSION DEPARTMENT – Oshkosh	Grandparents Raising Grandchildren	\$4,428
WISCONSIN EARLY AUTISM PROJECT, INC. (WEAP) – Oshkosh/Neenah/Menasha	Autism Treatment	\$240,000

LONG TERM SUPPORT

VENDOR	PROGRAM NAME	AMOUNT
COMMUNITY RESIDENTIAL SERVICES		
CARE PARTNERS ASSISTED LIVING, LLC – Winneconne	Community Based Residential Facility	\$45,000
CRL, LLC – Oshkosh	Community Based Residential Facility	\$10,000
PRODUCTIVE LIVING SYSTEMS, INC. – Altoona	Community Based Residential Facility/Adult Family Home	\$150,000
SERENITY PLACE, INC. – Oshkosh	Community Based Residential Facility	\$140,000
WORK RELATED/DAY SERVICES		
GOODWILL INDUSTRIES OF NORTH CENTRAL WISCONSIN, INC. – Menasha	Sheltered Employment Workshop	\$5,000
LAKESIDE PACKAGING PLUS, INC. – Oshkosh/Neenah	Adult Services Program	\$20,000
TODD STEVEN AND ASSOCIATES, INC. – Oshkosh/Neenah/Menasha	Community Building, Work Related Services and Behavioral Support	\$100,000