

Winnebago County Health Department

COVID-19 Data by School District Geographic Boundary

February 4, 2021

Summary

- As of February 3, at least 16,461 [COVID-19 vaccine doses](#) have been administered to Winnebago County residents that fall within [Phase 1a of the state's vaccination plan](#) or are at least 65 years old, and 604,673 doses of COVID-19 vaccine have been administered to Wisconsin residents. Our first mass clinic site for those aged 65+ opened this week at Sunnyview Expo in Oshkosh where at least 2,658 people were vaccinated February 1-3, with 76% of those people vaccinated being Winnebago County residents. One-quarter of Winnebago County residents aged 65+ have received at least 1 dose of the COVID-19 vaccine!
- It will take weeks to vaccinate all the currently eligible population; please be patient and see [our website](#) for updates.
- If you are eligible for a Phase 1a vaccination and have not been offered the vaccine, please check with your employer on their vaccination plan. If you are in Phase 1a and are not affiliated with a vaccine provider, please complete [this form](#) to be matched with a vaccinator.
- While it is very exciting that vaccine is arriving, it will take at least until the end of summer to reach an adequate level of community immunity, so we must continue to stay home, wear a mask, socially distance and practice good hand hygiene. Case rates remain very high and with the more contagious variant circulating in Wisconsin, we have to be careful to avoid another surge in virus activity. Please see these [tips](#) for when you do get vaccinated.
- **Get tested** after a known or potential exposure or if you have any symptoms, even if they are mild. If you have been tested, stay home until you receive your test results and follow the guidance provided.
- If you are using options to [shorten quarantine](#), be sure to continue to monitor symptoms, wear a mask, [social distance](#), and avoid group activities for the full 14 days. Shortened quarantine options may not be appropriate in all settings, such as high-risk, congregate settings, including daycares and K-12 schools.
- Safely [support the local community](#) through curbside pickup and delivery options and seeking out businesses that engage in precautionary measures. If a business is not following recommendations, consider speaking with manager and notifying the health department through this [form](#).
- There are currently 40 COVID-19 patients hospitalized in the Fox Valley.
- There have been a total of 171 confirmed COVID-19 deaths among confirmed and probable cases.
- **Our confirmed + probable case burden remains very high.** The confirmed + probable case rate over the past 2 weeks for our jurisdiction is 391.5 cases per 100,000 people, a decrease from 460.5 cases per 100,000 last week. The number of cases (confirmed/probable) in the first week of this 2-week timeframe was 216/141 and for this most recent week is 145/100. Individuals aged 30-39 had the highest confirmed case rates of 316.5 per 100,000. Rates are lowest in those under 18 (197.2 per 100,000).
- Over this past week, 5.3% of [PCR tests in Wisconsin](#) were positive and 4.5% of PCR tests across all of Winnebago County were positive. Many people with symptoms are only receiving antigen tests, which are excluded from our percent positivity calculation and likely leads to artificially lower percentages.
- Over the past two weeks, a daily average of 594 PCR tests were conducted among residents within the Winnebago County Health Department jurisdiction.
- We continue to ask for the community's help with notification of [close contacts](#). Early notification and [quarantine](#) of exposed individuals is an important tool in limiting spread of COVID-19. View our website for updated [testing information](#). WI Department of Health Services also encourages residents to download the [WI Exposure Notification app](#) to assist in notifying contacts of people who have tested positive for COVID-19.

Confirmed Cases by School District Geographic Boundary for the Past Two Weeks (January 20 – February 2)

There have been 339 new confirmed cases reported in the past two weeks within the geographic boundaries of the Neenah, Omro, Oshkosh, and Winneconne School Districts. An additional 22 reported confirmed cases were reported within the geographic boundaries of other school districts that only partially fall within our jurisdiction.

School District	Case Count for past 2 weeks	Case Rate (per 100,000)	Burden**	Population***
Neenah Joint School District Area	156	349.8	High	44,601
Omro School District Area	13	168.9	High	7,697
Oshkosh Area School District Area	149	185.3	High	80,408
Winneconne School District Area	21	216.5	High	9,701
Winnebago County Health Department Jurisdiction	361	234.8	High	153,748
Winnebago County	453	267.5	High	169,926
Wisconsin	19,513	337.5	High	

**Burden is based off of the case rate per 100,000 people in the past two weeks. To be consistent with the state's burden status categories, we have renamed our 'critical' category to be labelled 'very high'. See table below for more information on Burden Status for our county. Visit the DHS website for more information on this indicator <https://www.dhs.wisconsin.gov/covid-19/local.htm>

***Population for school district was retrieved from <https://nces.ed.gov/programs/edge/TableView/acsProfile/2018> Winnebago County Health Department Jurisdiction does not include the portions of the City of Menasha and the City of Appleton that fall within Winnebago County.

Burden Status	Case Rate per 100,000 residents in the past two weeks	Neenah SD Area	Omro SD Area	Oshkosh SD Area	Winneconne SD Area
Low	Case rate is less than or equal to 10.	Less than 4 cases.	Less than 1 case.	Less than 8 cases.	Less than 1 case.
Moderate	Case rate is greater than 10, but less than or equal to 50.	Greater than 4 cases, but less than or equal to 22 cases.	Greater than 1 case, but less than or equal to 4 cases.	Greater than 8 cases, but less than or equal to 40 cases.	Greater than 1 case, but less than or equal to 5 cases.
Moderately High	Case rate is greater than 50, but less than or equal to 100.	Greater than 22 cases, but less than or equal to 45 cases.	Greater than 4 cases, but less than or equal to 8 cases.	Greater than 40 cases, but less than or equal to 80 cases.	Greater than 5 cases, but less than or equal to 10 cases.
High	Case rate is greater than 100, but less than or equal to 350.	Greater than 45 cases, but less than or equal to 156 cases.	Greater than 8 cases, but less than or equal to 27 cases.	Greater than 80 cases, but less than or equal to 281 cases.	Greater than 10 cases, but less than or equal to 34 cases.
Very High	Case rate is greater than 350, but less than or equal to 1000.	Greater than 156 cases, but less than or equal to 446 cases.	Greater than 27 cases, but less than or equal to 77 cases.	Greater than 281 cases, but less than or equal to 804 cases.	Greater than 34 cases, but less than or equal to 97 cases.
Critically High	Case rate is greater than 1000.	Greater than 446 cases.	Greater than 77 cases.	Greater than 804 cases.	Greater than 97 cases.

Number of cases for each Burden Status refers to the number of cases during a two-week time span.

Number of Confirmed Cases and Rate per 100,000 People by School District Geographic Boundary in the Past Two Weeks (January 20 – February 2)

The highlighted cells for Neenah and Oshkosh School District Geographic Boundaries are colors associated with the burden status. Please see the table above for more information on burden status. This information is not provided for Omro and Winneconne School District Geographic Boundaries due to the small population size.

	Neenah SD Area		Omro SD Area		Oshkosh SD Area		Winneconne SD Area	
Age Group	# of cases	Rate per 100,000	# of cases	Rate per 100,000	# of cases	Rate per 100,000	# of cases	Rate per 100,000
<5	10	357.9	0	0.0	3	72.8	0	0.0
5-9	11	397.3	1	185.9	2	49.8	1	203.7
10-14	8	245.3	1	154.3	7	179.7	0	0.0
15-17	4	233.4	0	0.0	10	376.8	0	0.0
18-19	7	890.6	0	0.0	9	250.3	1	588.2
20-24	17	718.2	1	276.2	11	107.9	1	251.3
25-34	22	383.0	1	130.4	27	240.6	1	114.4
35-44	21	369.0	2	207.9	20	217.1	4	397.2
45-54	19	318.7	3	268.3	23	217.2	2	125.8
55-64	21	302.3	3	305.2	23	248.6	5	277.9
65-74	7	174.8	1	104.3	8	140.1	5	427.0
75-84	5	259.7	0	0.0	3	72.4	1	184.8
85+	4	627.9	0	0.0	3	165.8	0	0.0

Rate is determined by # of new confirmed cases during the past two weeks divided by population in the school district geographic boundary multiplied by 100,000. Rates can fluctuate greatly with small population sizes like Omro and Winneconne making it difficult to call out high rates. **Small population data may be more effectively looked at in a trend wise fashion.**

Age Group Trended Over Time

The tables below show the biweekly confirmed cases counts by school district geographic boundary across the past 3 months.

The graphs on the following pages show how case rates by age group have changed over time for Oshkosh and Neenah School District boundaries. The first graph on each page shows the biweekly confirmed case rates per 100,000 residents. The second graph shows the cumulative confirmed case rates. Cumulative case rates will always trend upward, it is the rate of increase in that trend that helps us understand what populations are being impacted the most. Omro and Winneconne do not have similar graphs due to small population size and small confirmed case counts in these geographic areas.

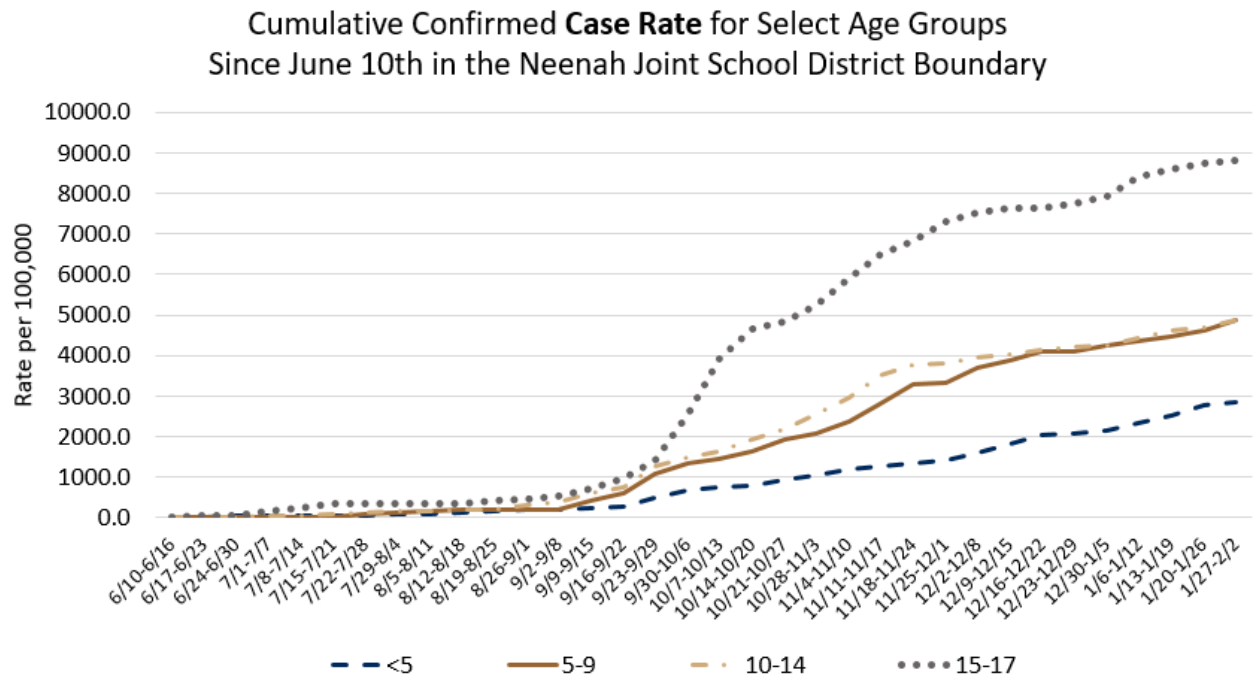
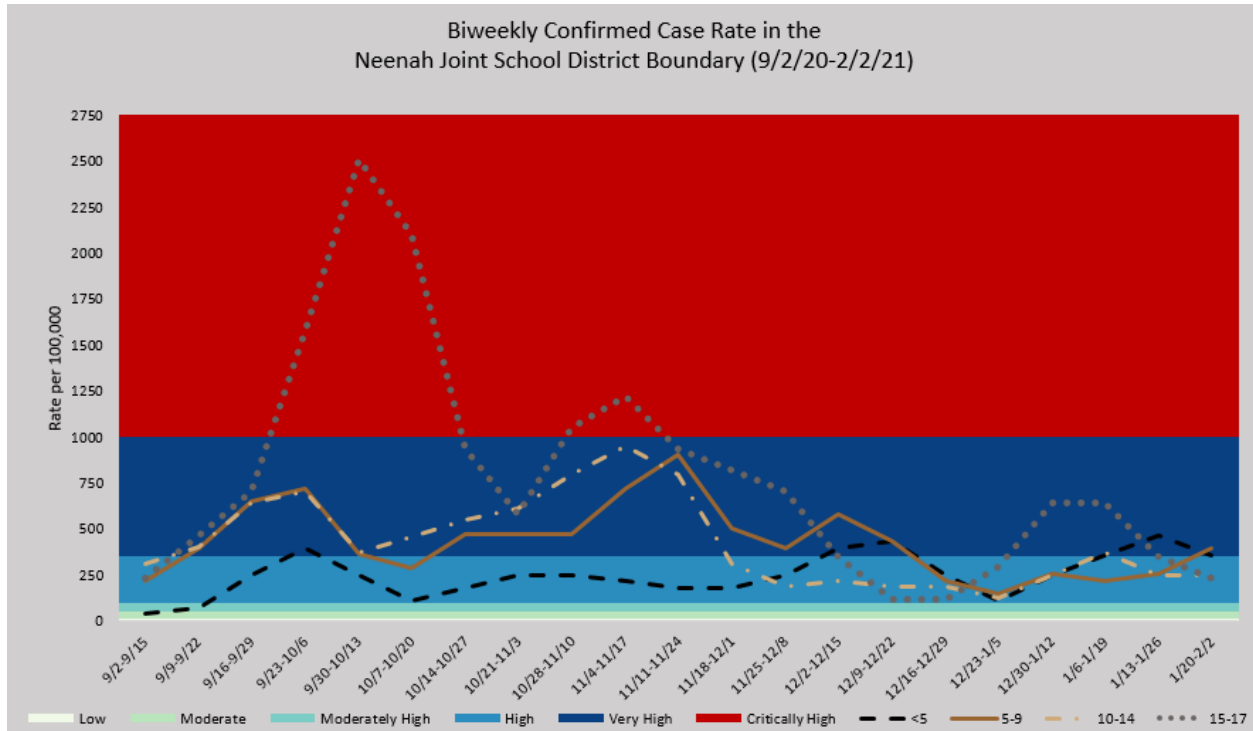
OMRO SCHOOL DISTRICT AREA				
Biweekly Confirmed Case Counts for Select Age Groups in the Omro School District Boundary				
Week	<5	5-9	10-14	15-17
11/4-11/17	1	1	2	3
11/11-11/24	0	2	1	2
11/18-12/1	1	1	1	3
11/25-12/8	1	1	2	6
12/2-12/15	0	4	4	3
12/9-12/22	0	3	2	0
12/16-12/29	0	0	0	0
12/23-1/5	0	1	0	0
12/30-1/12	2	2	0	0
1/6-1/19	2	1	1	0
1/13-1/26	0	1	2	0
1/20-2/2	0	1	1	0

WINNECONNE COMMUNITY SCHOOL DISTRICT AREA				
Biweekly Confirmed Case Counts for Select Age Groups in the Winneconne School District Boundary				
Week	<5	5-9	10-14	15-17
11/4-11/17	0	1	8	4
11/11-11/24	2	2	8	4
11/18-12/1	2	2	4	1
11/25-12/8	1	4	1	2
12/2-12/15	2	6	0	5
12/9-12/22	2	2	0	4
12/16-12/29	1	0	2	0
12/23-1/5	2	1	5	0
12/30-1/12	2	1	4	0
1/6-1/19	0	0	1	1
1/13-1/26	0	1	0	1
1/20-2/2	0	1	0	0

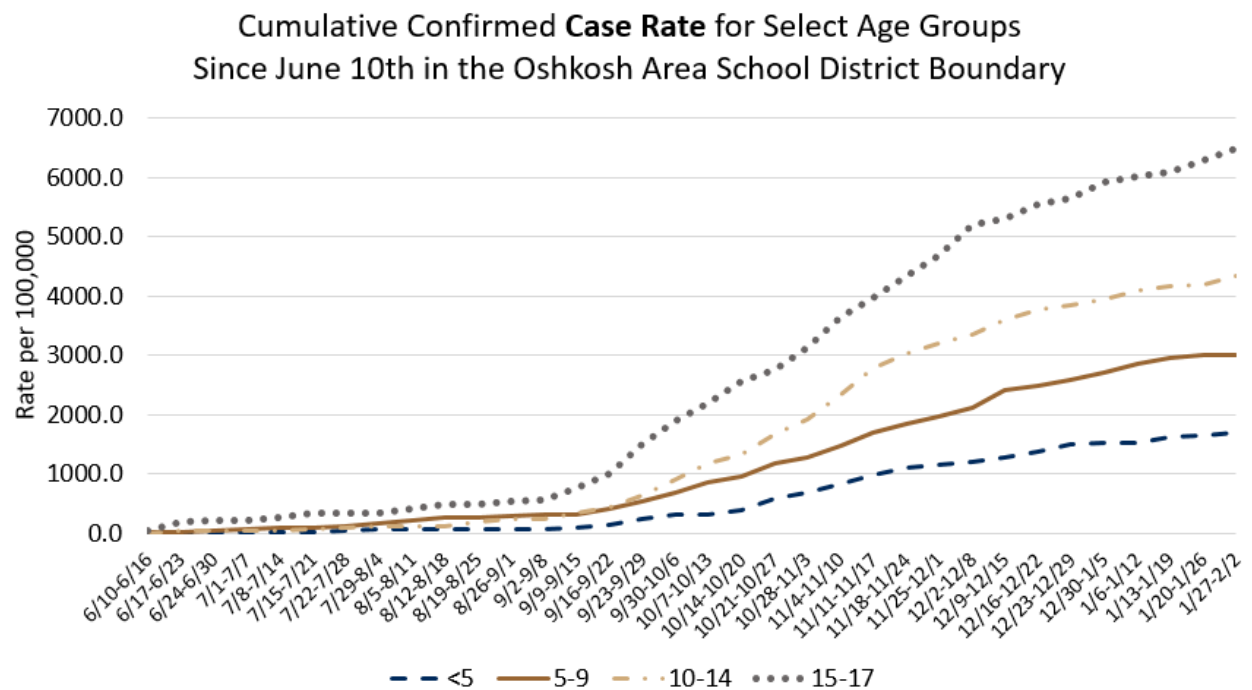
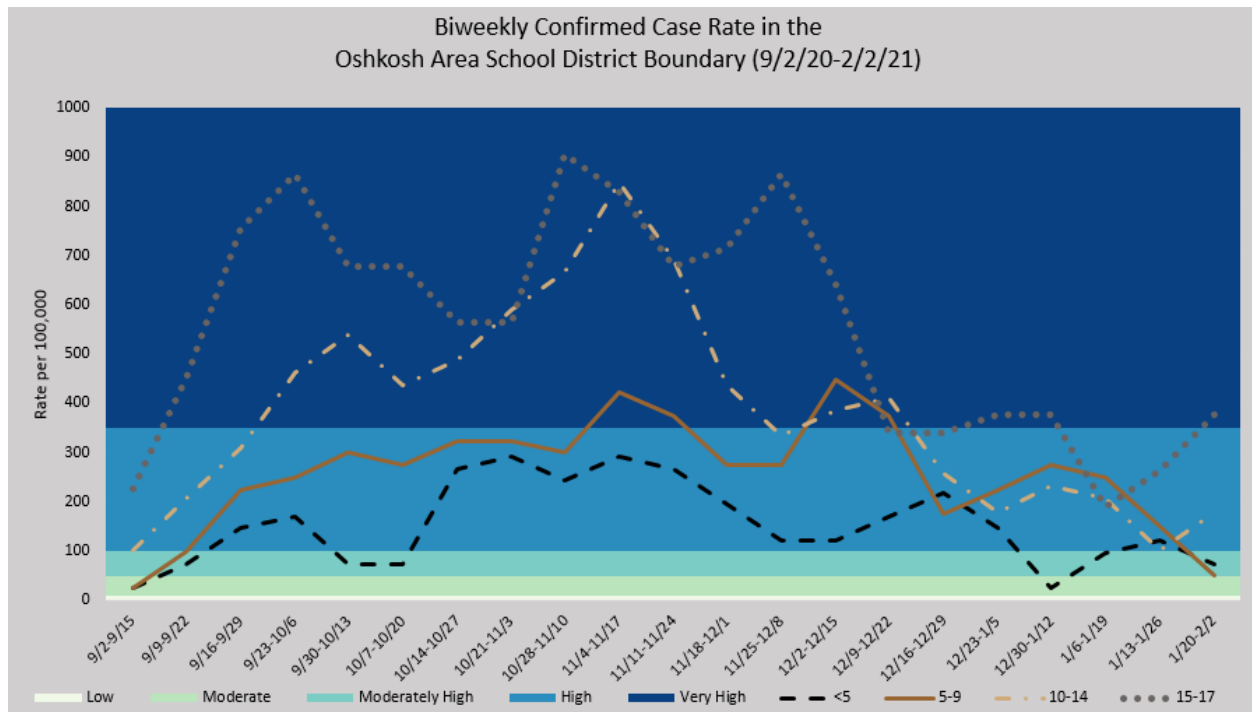
OSHKOSH AREA SCHOOL DISTRICT AREA				
Biweekly Confirmed Case Counts for Select Age Groups in the Oshkosh School District Boundary				
Week	<5	5-9	10-14	15-17
11/4-11/17	12	17	33	22
11/11-11/24	11	15	27	18
11/18-12/1	8	11	17	19
11/25-12/8	5	11	13	23
12/2-12/15	5	18	15	17
12/9-12/22	7	15	16	9
12/16-12/29	9	7	10	9
12/23-1/5	6	9	7	10
12/30-1/12	1	11	9	10
1/6-1/19	4	10	8	5
1/13-1/26	5	6	4	7
1/20-2/2	3	2	7	10

NEENAH JOINT SCHOOL DISTRICT AREA				
Biweekly Confirmed Case Counts for Select Age Groups in the Neenah School District Boundary				
Week	<5	5-9	10-14	15-17
11/4-11/17	6	20	31	21
11/11-11/24	5	25	26	16
11/18-12/1	5	14	10	14
11/25-12/8	7	11	6	12
12/2-12/15	11	16	7	6
12/9-12/22	12	12	6	2
12/16-12/29	7	6	6	2
12/23-1/5	3	4	4	5
12/30-1/12	7	7	8	11
1/6-1/19	10	6	12	11
1/13-1/26	13	7	8	6
1/20-2/2	10	11	8	4

NEENAH JOINT SCHOOL DISTRICT GEOGRAPHIC BOUNDARY



OSHKOSH AREA SCHOOL DISTRICT GEOGRAPHIC BOUNDARY



Background Information

This report provides *preliminary* data on the confirmed COVID-19 cases from January 20, 2021 – February 2, 2021. **A person is counted as a confirmed COVID-19 case if they had a positive confirmatory laboratory test (for example, polymerase chain reaction (PCR) tests or nucleic acid amplification tests (NAT) that detect genetic material of SARS-CoV-2, the virus that causes COVID-19). Antigen positive tests are counted as probable cases and are not currently included in the case count rates and graphs in this report.** Please view the General Weekly Data Report to learn more about the confirmed and probable case counts, rates, and burden level.

Dates utilized for all graphs and tables are based on test result date and may not represent final reported case counts. Data may be underreported for recent days because results can take multiple days to be reported to the health department. This means the number of tests and percent positivity may change in next week's report. As this is a weekly report for the past 14 days, there will always be a week of overlap between reports.

Data by school district geographic boundary may differ from data provided by the respective school district. School district geographic boundaries are the geographic area from which children are **eligible** to attend a certain school district. Data by school district geographic boundary includes cases among all individuals that live within that boundary regardless of age or where they attend school. In this report, data for school age children (5-17) does not differentiate between where they actually attend school or if they are homeschooled.

For school district specific COVID-19 information:

- [Neenah Joint School District](#)
- [Omro School District](#)
- [Oshkosh Area School District](#)
- [Winneconne Community School District](#)

*The COVID-19 data provided in this report is specific to the Winnebago County Health Department (WCHD) jurisdiction (population: 153,748). It does not include the portions of the City of Menasha or City of Appleton that fall within Winnebago County as those areas fall within the jurisdiction of the [City of Menasha Health Department](#) and [City of Appleton Health Department](#). As of October 3, 2020, data reports from the Winnebago County Health Department do not include test results from residents in Wisconsin Department of Corrections facilities, which includes the Oshkosh Correctional Institute. This data can be found on the Wisconsin Department of Corrections [website](#).

Data provided on the [Department of Health Services website](#) may be different than the information provided by WCHD because the state reports data for the entire county based on address, which includes those portions of Menasha and Appleton as well as the correctional facilities.

For additional Winnebago County Health Department COVID-19 information:

- [WCHD COVID-19 Webpage](#)
- [General Weekly Data Summaries](#)
- [Municipality Weekly Data Summaries](#)