



Winnebago County Health Department

COVID-19 Weekly Data Summary

February 3, 2022

Cases and hospitalizations remain critically high.
Cases are declining but your risk of exposure remains very high.

Summary

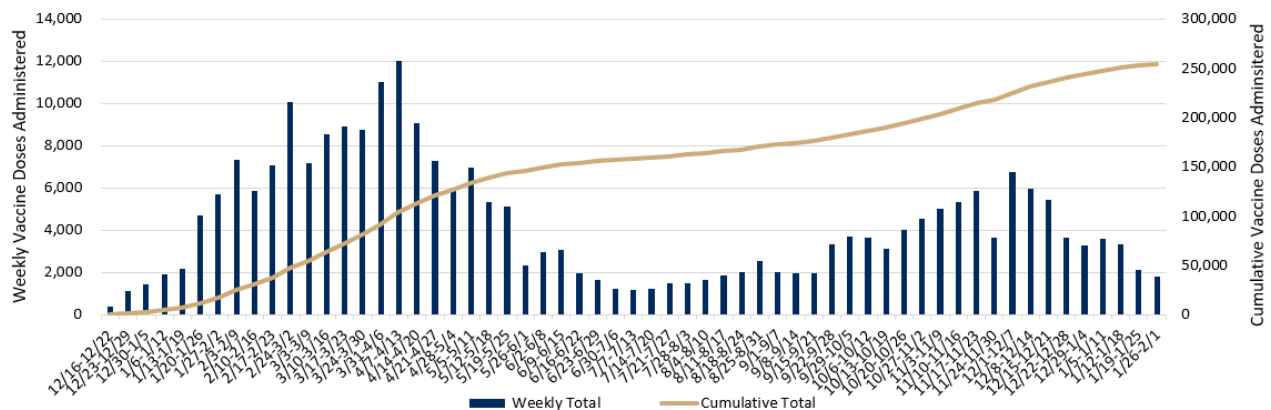
- The Winnebago County Health Department and Wisconsin Department of Health Services (DHS) are urging everyone to [take action](#) to prevent hospitalizations, deaths and further spread of COVID-19. Healthcare systems have been impacted by the record number of COVID patients and limited staff due to illness or exposure, causing some providers to defer non-urgent elective surgeries. DHS is advising everyone to get [vaccinated](#) against COVID-19, wear a [well-fitting mask](#), avoid crowds, and get [tested](#) for COVID-19.
- Situational Awareness:
 - Winnebago County is at a **critically high** burden status and activity level. Although we are seeing a decrease in cases, we are likely to remain at a high level of cases for the weeks to come. If you are at high risk of complications from COVID-19, remain extremely cautious at this time.
 - At this point, we have reported 10,472 confirmed + probable cases in January. This is over half of what was reported for the entire 2021 year. In 2021 we reported a total of 16,943 confirmed + probable cases.
 - Over the past 14 days, the case rate reached 2,338.2 confirmed + probable cases per 100,000 people, which is a 36% decrease from the 3,632.6 confirmed + probable cases reported in last week's report.
 - There are currently 97 [COVID-19 patients hospitalized](#) in Fox Valley Area hospitals. Local health systems are at a crisis point and are severely strained.
 - 31% of Winnebago County residents have received a COVID-19 booster dose and are considered "up to date" on their vaccination.
 - Due to the incredibly high number of positive COVID-19 cases, WCHD does not have the capacity to follow up with every person who tests positive at this time. If you test positive, you might receive a [text message](#), voice message, and/or email from WCHD. We are asking [people that test positive](#) for COVID-19 to [reach out to all close contacts](#) themselves. Please reference [our website](#) for guidance following a positive test result or exposure to COVID-19.
- If you or a member of your household tested positive for COVID-19, have symptoms or were exposed, please follow [current isolation and quarantine guidance](#) to help prevent spread of the virus. Also, be sure to notify your workplace, school or daycare. High risk settings may have additional guidelines.
- [Unvaccinated people](#) account for the vast majority of severe cases, hospitalizations (over 90%) and deaths from COVID-19. [Vaccines](#) are proven to reduce the risk of severe illness due to COVID-19 and protect the people around you. COVID-19 vaccines are free, do not require an ID or insurance, and are available for anyone five years and older. Visit www.wcvaccine.org for answers to your questions and to find a vaccination site near you.
- DHS recommends a Pfizer or Moderna [booster dose at 5 months](#) for everyone 12 years of age and older and also recommends an additional primary dose for certain immune compromised children 5- to 11- years-old.
- [CDC recommends](#) people receive an mRNA COVID-19 vaccine (Pfizer or Moderna) over Johnson & Johnson's COVID-19 vaccine, when possible and appropriate.
- To keep [kids safe and in school](#), get your child vaccinated, have your child wear a well-fitting mask, stay home when ill, and get [tested](#) if they have symptoms or were exposed to COVID-19. If your child is ill or has been exposed to COVID-19, keep all other children in your household home too.
- COVID-19 testing remains an important tool in reducing spread of the virus. Whether you are vaccinated or unvaccinated, protect others by isolating if infected and get a COVID-19 test if you have symptoms, were exposed to the virus, or feel you need a test. Even if you have no symptoms or mild ones, you can infect others.
 - If you were [exposed to COVID-19](#), wait 5 days from exposure to get tested. Get tested immediately if you have symptoms. Find additional quarantine and testing guidance on our website.
 - [Visit our website](#) for a list of testing locations in Winnebago County.
 - [Sunnyview Expo Center](#) PCR test results currently take approximately 1-2 days.

COVID-19 Vaccination Data

As of 2/2/2022, **6,970,327 doses** of the [COVID-19 vaccine](#) have been administered to Wisconsin residents with 63.3% of the Wisconsin population having received at least one dose of the COVID-19 vaccine and 59.4% of the Wisconsin population have completed the vaccine series.

As of 2/2/2022, **255,397 doses** of [COVID-19 vaccine](#) have been administered to Winnebago County residents with 62.0% of the county population having received at least one dose of the COVID-19 vaccine and 60.7% of the county population have completed the vaccine series. Of Winnebago County residents aged 5 or older, 65.6% have received at least one dose of the COVID-19 vaccine. Since August 12, 2021, over 52,000 3rd doses/booster doses have been administered to Winnebago County residents. Since November 7, 2021 over 4,000 first doses have been administered to children ages 5 to 11.

Cumulative and Weekly Number of COVID-19 Vaccine
Doses Administered to Winnebago County Residents
(12/16/2020-2/1/2022)



This table shows the number and percent of Winnebago County residents who have received at least one dose of the COVID-19 vaccine by demographic breakdown. Data will differ slightly from what is posted on the [DHS website](#) due to differences in population estimates used and because the data is extracted at a different time of day.

		Number	Percent	Population*			Number	Percent	Population*
Ethnicity	Hispanic or Latino	3,764	53.6%	7,017	Sex	Female	55,755	65.9%	84,556
	Not Hispanic or Latino	99,476	60.9%	163,394		Male	49,735	57.9%	85,855
	Unknown	2,424				Unknown	174		
Race	American Indian or Alaska Native	617	61.1%	1,010	Age Group	5-11	4,095	30.0%	13,635
	Asian	3,586	75.5%	4,748		12-15	4,372	54.8%	7,974
	Black or African-American	1,756	45.3%	3,874		16-17	2,331	56.8%	4,103
	Native Hawaiian or Other Pacific Islander	125	96.9%	129		18-24	8,733	42.6%	20,491
	Other Race	7,325	99.9%**	4,291		25-34	13,453	59.9%	22,442
	White	89,579	57.3%	156,359		35-44	14,274	70.9%	20,144
	Unknown	2,676				45-54	14,443	64.5%	22,390
						55-64	18,354	80.3%	22,846
						65-74	15,205	99.9%**	15,050
						75+	10,403	87.0%	11,964
						5+	105,664	65.6%	161,039

*Age Group Population Data comes from the [2019 census](#). Population sizes used in this table are for all of Winnebago County, not just the jurisdiction of Winnebago County Health Department. Population sizes will differ from population sizes used elsewhere in these reports.

** The metric for percent of population vaccinated has been capped at 99.9%. These metrics could be greater than 99.9% for multiple reasons, such as census denominator data not including all individuals that currently reside in the jurisdiction, differences in racial category classification, etc.

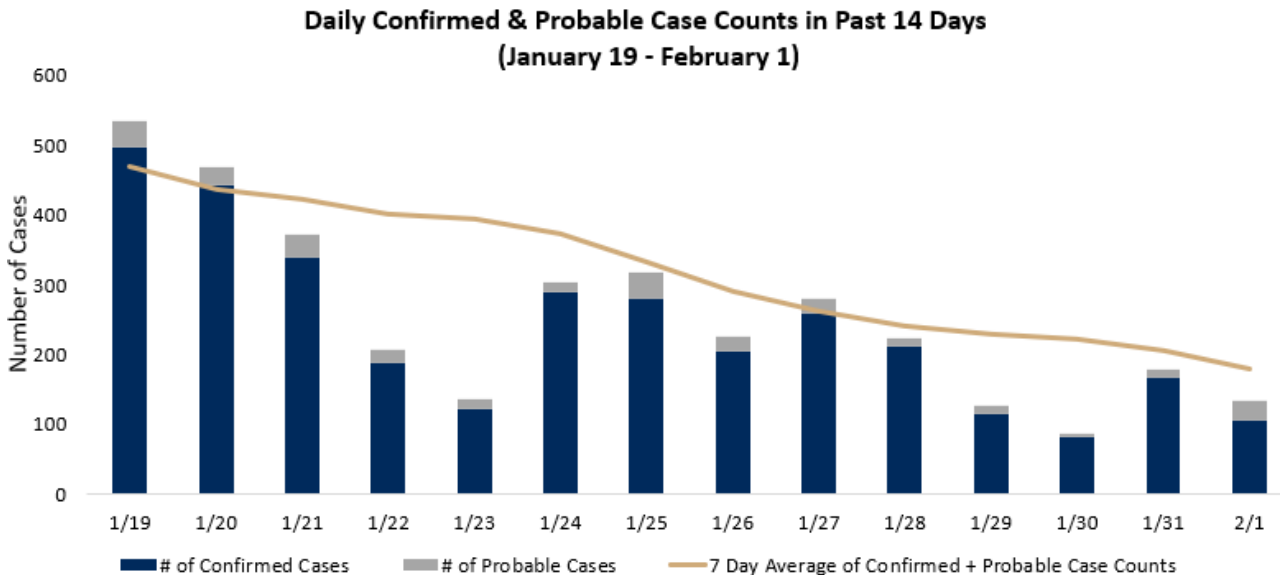
Reported Case Counts

	Case Counts for the Past 14 Days 01/19/2022-02/01/2022	Cumulative Case Counts 03/09/2020-02/02/2022
Confirmed Cases	3,308	36,429
Active Cases		2,815 (8% of cumulative cases)
Recovered Cases		33,366 (92% of cumulative cases)
Probable Cases	287	6,516
Negative Cases	4,212	126,120
Deaths**	7	287
Among Confirmed Cases	4	248
Among Probable Cases	3	39

**Death certificate must list COVID-19 (or the virus causing COVID-19) as a cause of death or a significant condition contributing to death. Healthcare providers and/or coroner determines cause of death. Data includes COVID deaths among PCR confirmed cases and probable cases.

Case Count by Day – Last 2 Weeks

When there is adequate testing in place, trending daily case counts show if the disease is spreading or shrinking and the overall burden of disease in our area. This graph shows the number of confirmed cases by test result date and probable cases by the date their case file was created. **There was an average of 256.8 confirmed and probable cases per day, which is a decrease from the 398.9 confirmed and probable cases per day last week. Total daily confirmed and probable case counts ranged from 86 to 535 cases.** There was an average of 236.3 confirmed cases per day, which is a decrease from the 358.6 cases per day last week. There was an average of 20.5 probable cases per day, which is a decrease from the 40.3 probable cases per day last week. The trend line shows the 7-day average for the combined total of confirmed and probable cases. For a full disease curve, see the [dashboard](#) on our [website](#).



Daily confirmed case counts presented here may differ from our situation update and the cases by day graph reported on our dashboard. This chart reflects the test result date instead of the date when the results are actually received by the health department.

A person is counted as a confirmed COVID-19 case if they had a positive test result using a confirmatory diagnostic test that detects the genetic material of SARS-CoV-2, the virus that causes COVID-19 (polymerase chain reaction (PCR) tests or nucleic acid amplification tests (NAAT)). Reasons a person could be counted as a probable case include: a positive antigen test or diagnosis due to symptoms and known exposure to COVID-19.

Burden Status

Burden status is the total number of reported cases per 100,000 residents in the last two weeks.

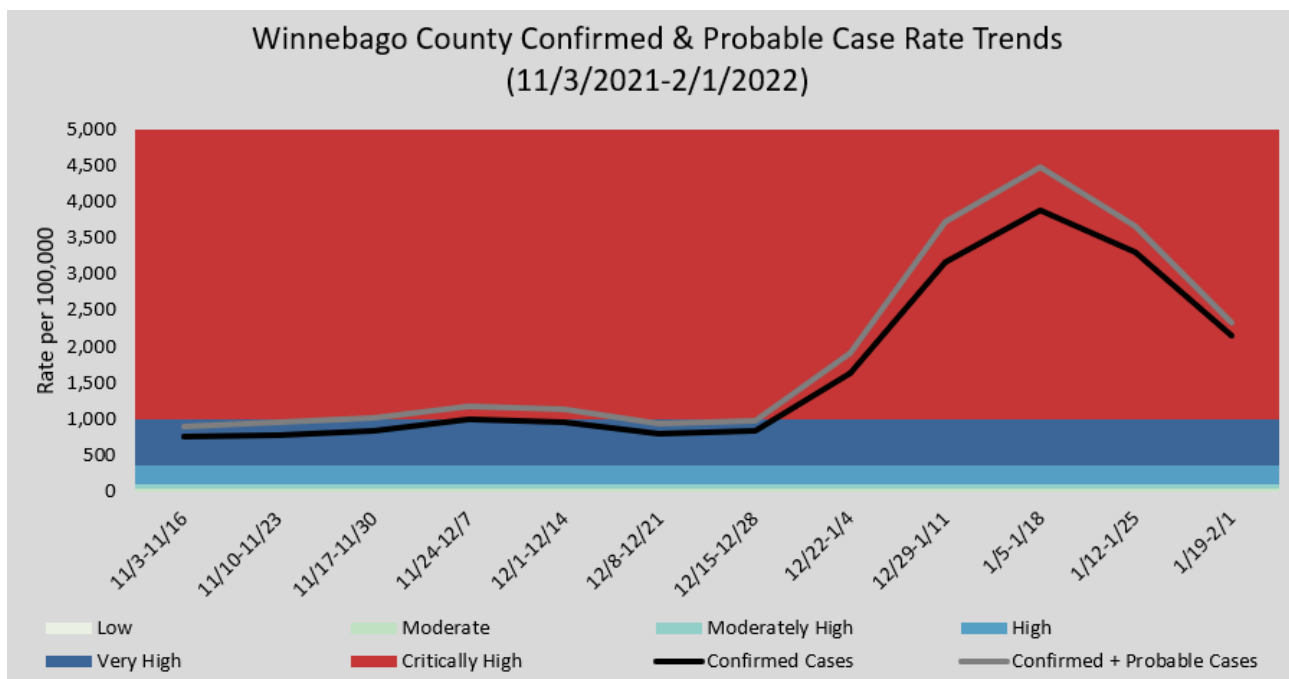
Dates	Confirmed Cases	Probable Cases	Total (Confirmed + Probable)
01/19/22-01/25/22	2,160	179	2,339
01/26/22-02/01/22	1,148	108	1,256
Total for last two weeks	3,308	287	3,595
Case rates for last two weeks (per 100,000 population)	2,151.6	186.7	2,338.2

Burden Status	Case Rate per 100,000 residents in the past two weeks	Number of Cases in the past two weeks
Low	Case rate is less than or equal to 10.	Less than 15 cases or about 1 case per day.
Moderate	Case rate is greater than 10, but less than or equal to 50.	Greater than 15 cases, but less than or equal to 77 cases or less than 6 cases per day.
Moderately High	Case rate is greater than 50, but less than or equal to 100.	Greater than 77 cases, but less than or equal to 154 cases.
High	Case rate is greater than 100, but less than or equal to 350.	Greater than 154 cases, but less than or equal to 538 cases.
Very High	Case rate is greater than 350, but less than or equal to 1,000.	Greater than 538 cases, but less than or equal to 1,537 cases.
Critically High	Case rate is greater than 1,000.	Greater than 1,537 cases.

Case rate is determined by number of new confirmed cases in a particular group (such as an age group) during the past two weeks, divided by the population of that particular group, multiplied by 100,000. View the [DHS COVID Local Activity Level](#) page to learn more about burden status.

Biweekly Confirmed & Probable Case Rate Trends

The graphs below show confirmed case rate per 100,000 people and the confirmed + probable case rate per 100,000 people for the Winnebago County Health Department Jurisdiction. These case rates are based on confirmed and probable case counts during a two-week time span.

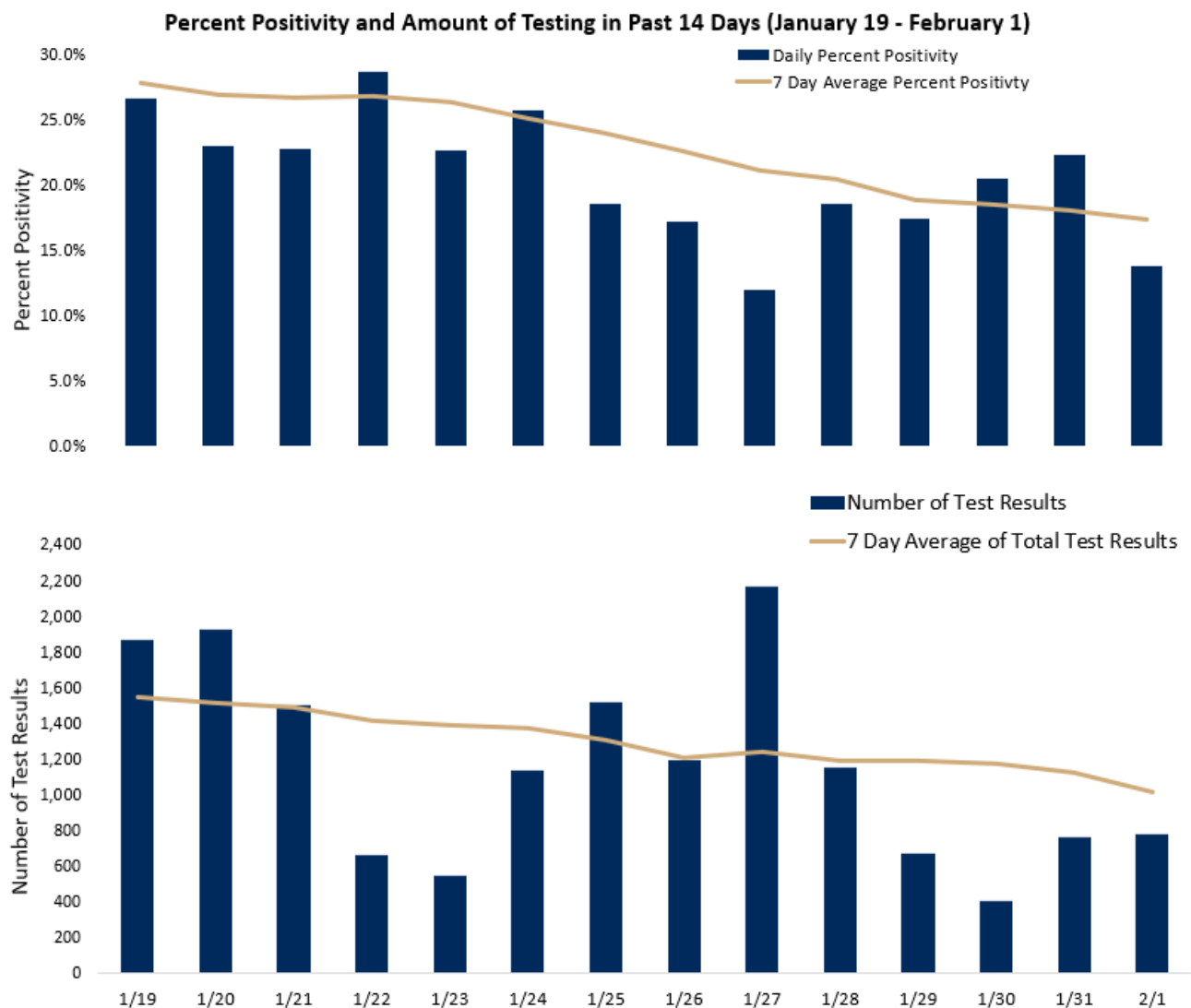


Amount of Testing and Percent Positivity

Adequate testing capacity and utilization are necessary for identification of active infections of COVID-19, and investigations into those positive cases helps prevent the spread of the virus. Higher disease activity requires more testing to identify and isolate enough infected people to slow the spread. The percent positivity helps determine if there is adequate testing. A high percent positivity may indicate an inadequate amount of testing, which limits the number of identified cases and subsequent contact tracing used to help reduce the spread of the virus. Our current goal is to have enough testing to keep the percent positivity below 5%. View the [DHS COVID Local Activity Level](#) page to see percent positivity for the state, counties, and regions.

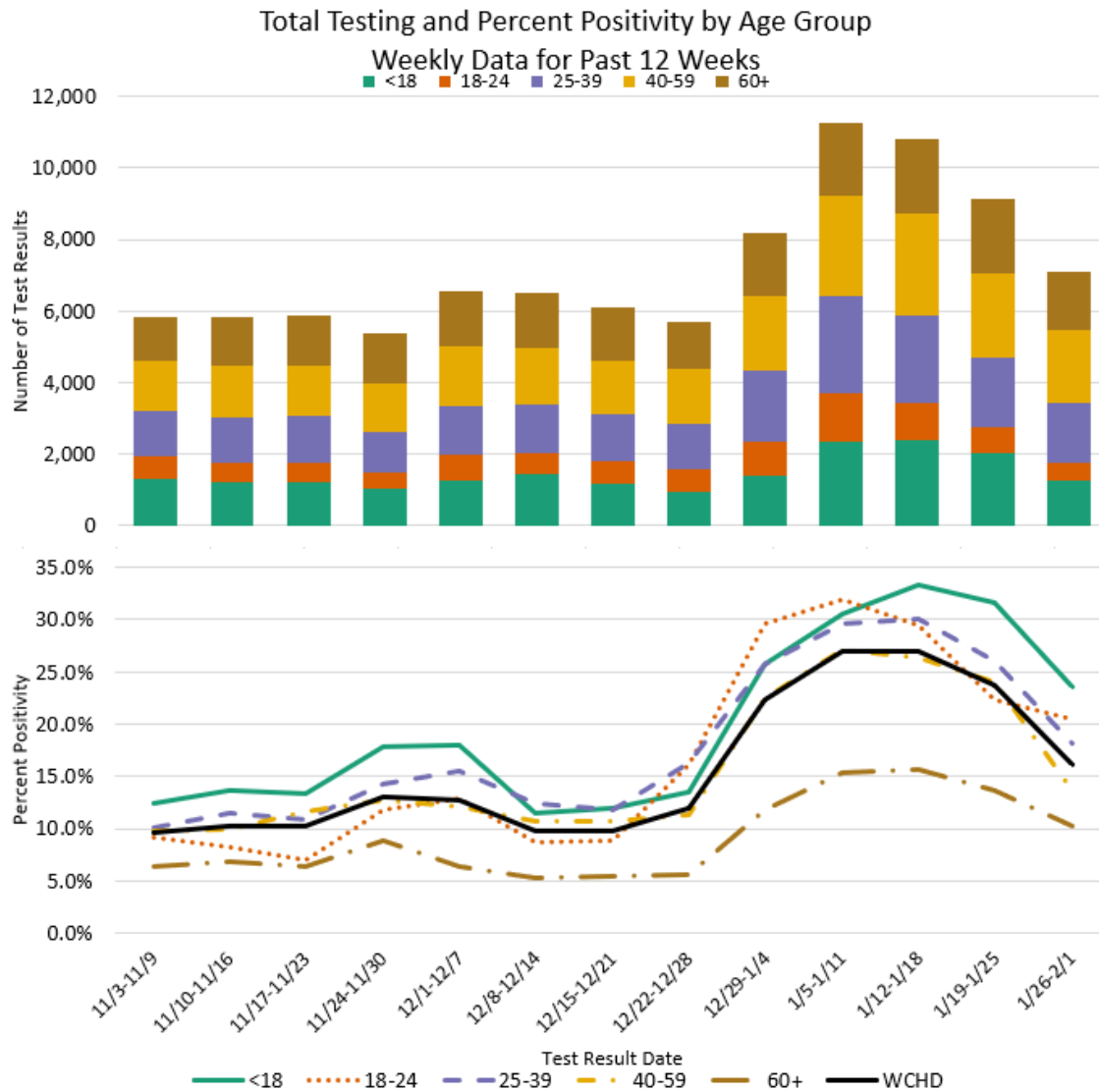
Over the past two weeks, **20.4% of PCR tests were positive**, which is a decrease from the 26.0% positivity last week. Over the past two weeks an **average of 1,158 PCR tests** were conducted each day among residents within the Winnebago County Health Department jurisdiction, which is a decrease from the 1,380 PCR tests last week. Antigen tests are not included in the testing numbers or the percent positivity calculation.

[Testing](#) is available at the [regional COVID-19 testing site](#) at Sunnyview Expo Center in Oshkosh as well as other locations including [CVS pharmacies](#) and community test sites in and [Appleton](#).



Amount of Testing and Percent Positivity by Age Group

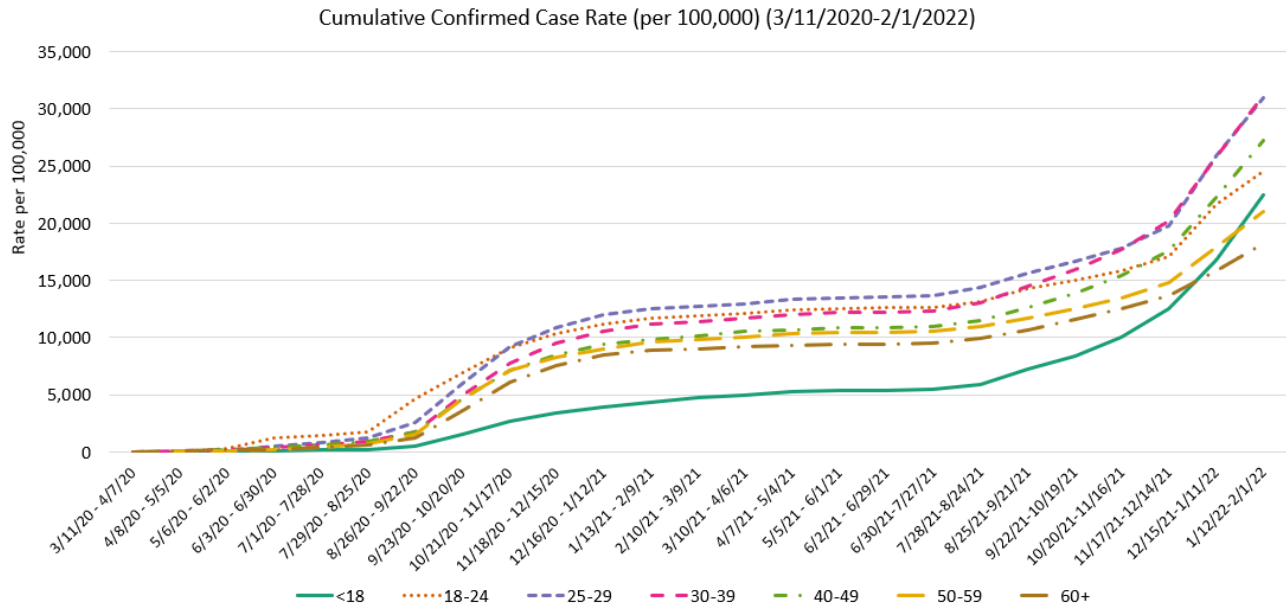
The figures below show the percent positivity and total testing numbers by age group. Antigen tests are not included in the testing numbers or the percent positivity calculation. A PCR confirmed case is only counted once in the percent positivity calculation, meaning a person with multiple positive PCR tests only counts as one confirmed case. Over the past week, individuals aged <18 had a 23.6% positivity rate. Over the past week, **16.2% of PCR tests were positive** in our jurisdiction, which is a decrease from the 24.7% positivity reported for the previous week (1/19-1/25).



01/26/22-02/01/22	<18	18-24	25-39	40-59	60+	Total
Percent Positivity	23.6%	20.5%	18.1%	13.7%	10.3%	16.2%
Testing Rates per 100,000 population	4,093	2,481	5,747	4,923	5,071	4,641
Number of Tests	1,266	474	1,690	2,023	1,641	7,096
Population	30,928	19,108	29,405	41,095	32,359	152,895

Trending by Age Group

This graph shows how cumulative confirmed case rates by age group have changed over time. Cumulative case rates will always trend upward; it is the rate of increase in that trend that helps us understand what populations are being impacted the most.



This table shows the case count and case rate by age group for the past two weeks and cumulatively.

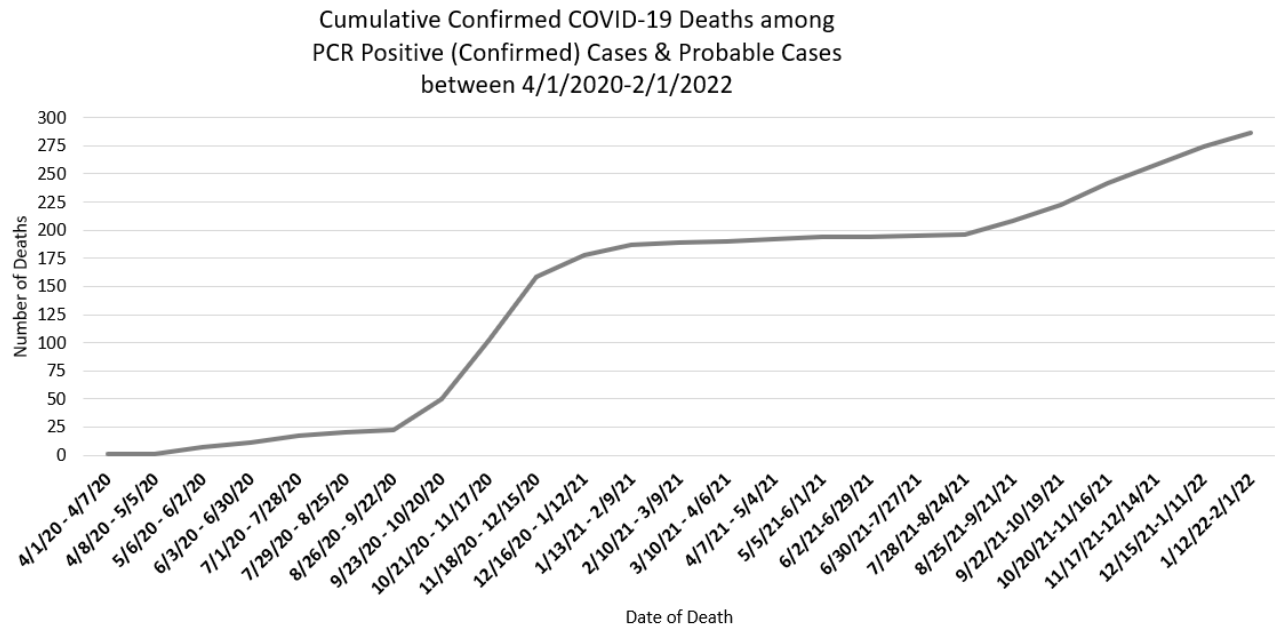
Age Group	Past Two Weeks (01/19/22-02/01/22)		Cumulative PCR Confirmed Case Count	Population***
	PCR Confirmed Case Count	Case Rate (per 100,000)		
<5	177	2,134.3	1,137	8,293
5-9	275	3,330.9	1,992	8,256
10-14	326	3,644.9	2,310	8,944
15-17	167	3,072.7	1,503	5,435
18-24	257	1,345.0	4,691	19,108
25-29	270	2,664.8	3,136	10,132
30-39	542	2,812.2	6,004	19,273
40-49	470	2,572.7	4,971	18,269
50-59	374	1,638.5	4,797	22,826
60+	450	1,390.6	5,885	32,359

***Age Group Population Data comes from the [2018 census](#). Total Population size across all age groups (152,895) differs slightly from total population size used to calculate Winnebago County Health Department jurisdiction case rate (153,748) which was determined using 2020 population data from the [WI Department of Administration](#).

Confirmed COVID-19 Deaths

Confirmed COVID-19 deaths include deaths among PCR confirmed cases and probable cases. Confirmed COVID-19 deaths have a death certificate that lists COVID-19 disease or SARS-CoV-2 as a cause of death or a significant condition contributing to death. Healthcare providers or medical examiners/coroners determine cause of death. Public reporting of COVID-19 deaths lag while waiting for confirmation.

In the graph below, the data for recent weeks is preliminary and subject to change. Recent deaths are still pending as we await confirmation on cause of death.



These tables show case counts for confirmed COVID-19 deaths by age group and housing type, as well as by ethnicity, race, and sex.

All Confirmed COVID-19 Deaths by Age Group and Housing Type					
Age Group	Not Group	LTCF/ Group	Total Deaths	Rate per 100,000	Population
<50	15	1	16	16.4	97,710
50-59	30	1	31	135.8	22,826
60-69	37	8	45	272.9	16,491
70-79	43	20	63	656.7	9,594
80-89	47	38	85	2,103.9	6,274
90+	14	33	47		
Total	186	101	287	187.7	152,895

All Confirmed COVID-19 Deaths by Ethnicity, Race, and Sex		
Ethnicity	Hispanic/Latino or Unknown	25
	Not Hispanic/Latino	262
Race	Other or Unknown	23
	White	264
Sex	Female	119
	Male	168

Long-term care facility (LTCF): nursing homes, assisted living facilities

Group housing facility: Group housing facilities include city and county jails, homeless shelters, dormitories and group homes. Deaths among those living in Wisconsin Department of Corrections facilities (including Oshkosh Correctional Institute) are not included here.

Not group housing facility: single family homes, apartments, condos, duplexes or townhouses

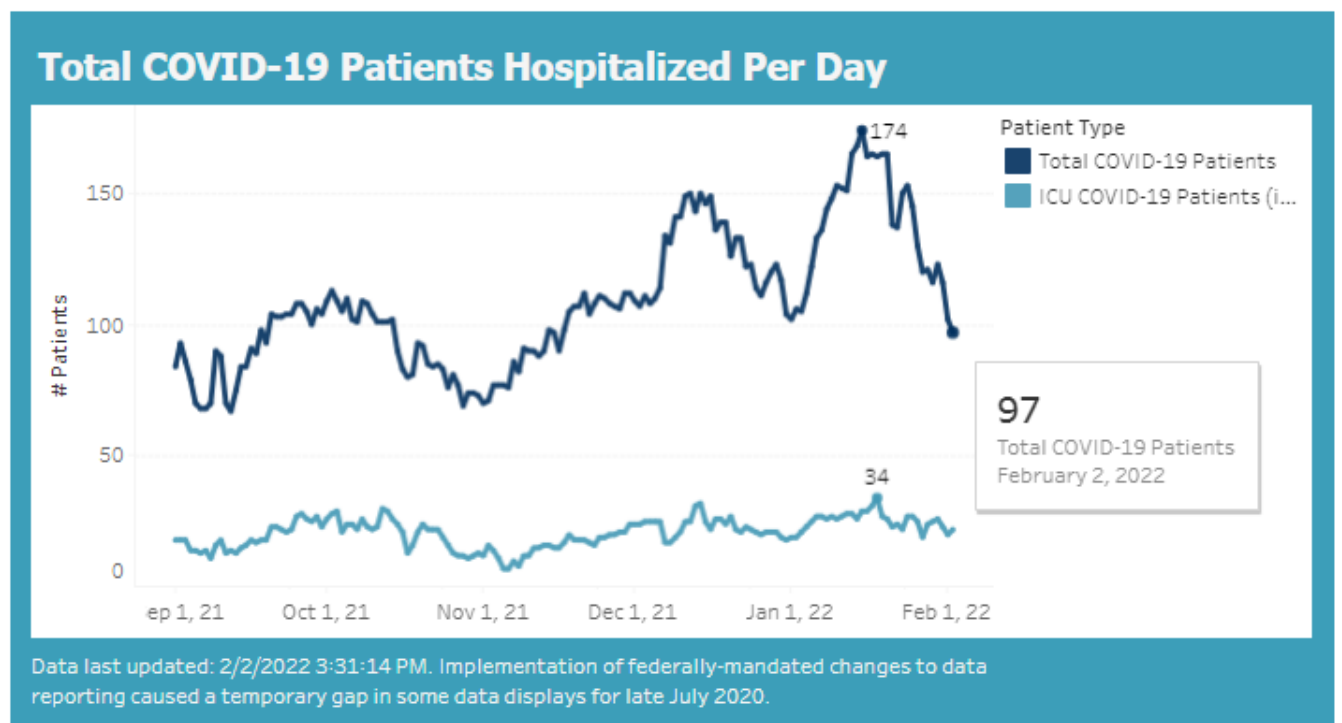
Healthcare Measures for the Fox Valley Area

The Fox Valley Area HERC Region includes Calumet, Green Lake, Menominee, Outagamie, Shawano, Waupaca, Waushara and Winnebago Counties.

It is vital that healthcare systems have adequate capacity to manage patient care in the context of a surge caused by COVID-19. Through adequate testing, case identification and investigation we can help keep case counts at levels that are manageable by our healthcare systems. When healthcare systems exceed their capacity, the ability to treat severe illness is compromised and patients do worse and/or do not get the care they need to survive the illness.

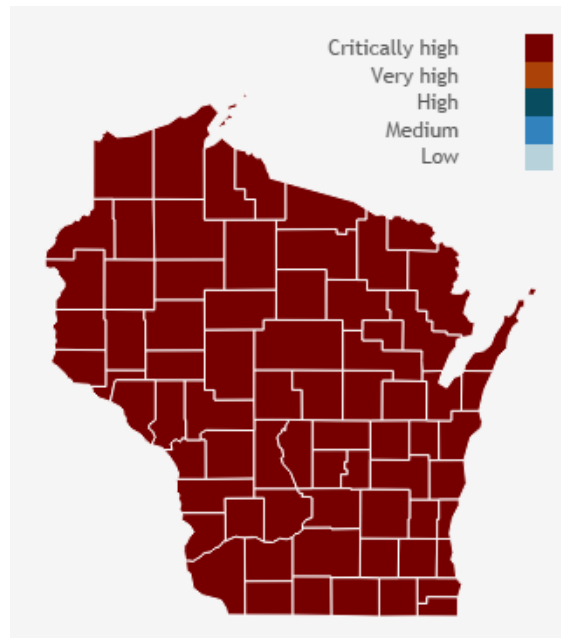
As of 02/02/2022, there were **97 COVID-19 patients hospitalized** in the Fox Valley Area hospitals with 22 of those patients in the ICU.

To view more information on healthcare measures in the Fox Valley Area and across the state, please visit <https://www.wha.org/COVID19Update> and <https://www.dhs.wisconsin.gov/covid-19/hosp-data.htm>



Burden, Trajectory, and Activity Level Across Wisconsin in Past 14 Days

Updated 02/02/2022



The Wisconsin Department of Health Services classifies regions and counties as critically high, very high, high, medium, or low activity levels for COVID-19 spread by combining the case burden (case rate) and trajectory (change in cases over time) indicators. The state updates this information weekly on Wednesdays by 5 p.m. As of February 2, 2022, Winnebago County**** and the Fox Valley Region were classified as having a **critically high COVID-19 activity level**.

To view more information on these metrics, please visit <https://www.dhs.wisconsin.gov/covid-19/local.htm>

Area	Confirmed + Probable Case Count (Past 14 days)	Burden	Trajectory	Activity Level	Percent Positive (Past 7 Days)
Winnebago	4,503	2,623.7 Critically High	-29% ▼	Critically High ■	20.9%
Fox Valley Area	12,213	2,221.2 Critically High	-39% ▼	Critically High ■	18.8%
Outagamie	3,849	2,039.0 Critically High	-44% ▼	Critically High ■	17.2%
Wisconsin	111,836	1,917.4 Critically High	-43% ▼	Critically High ■	18.4%

A trajectory of N/A means there was no significant change in the percent change in cases for this week compared to the previous week.

****This data is provided by the [Department of Health Services](#) and may be different than the information provided by WCHD because the state reports data for the entire county, which includes the portions of Winnebago County that fall within the jurisdiction of the [City of Menasha Health Department](#) and [City of Appleton Health Department](#).

Background Information

This report provides *preliminary* data on confirmed COVID-19 cases from January 19, 2022 – February 1, 2022. A person is counted as a **confirmed** COVID-19 case if they had a positive confirmatory laboratory test (for example, polymerase chain reaction (PCR) tests or nucleic acid amplification tests (NAAT) that detect genetic material of SARS-CoV-2, the virus that causes COVID-19). Antigen positive tests are counted as **probable** cases.

Dates utilized for all graphs and tables are based on test result date and may not represent final reported case counts. Data may be underreported for recent days because results can take multiple days to be reported to the health department. This means the number of tests and percent positivity may change in next week's report. As this is a weekly report for the past 14 days, there will always be a week of overlap between reports.

*The COVID-19 data provided in this report is specific to the Winnebago County Health Department (WCHD) jurisdiction (population: 153,748). It does not include the portions of Winnebago County that fall within the jurisdiction of the [City of Menasha Health Department](#) and [City of Appleton Health Department](#). As of October 3, 2020, data reports from the Winnebago County Health Department do not include test results from residents in Wisconsin Department of Corrections facilities, which includes the Oshkosh Correctional Institute. This data can be found on the Wisconsin Department of Corrections [website](#).

Data provided on the [Department of Health Services website](#) may be different than information provided by WCHD because the state reports data for the entire county based on address, which includes those portions of Menasha and Appleton as well as the correctional facilities.

For additional Winnebago County Health Department COVID-19 information:

- [WCHD COVID-19 Webpage](#)
- [Municipality Weekly Data Summaries](#)
- [School District Weekly Data Summaries](#)
- [Trend Data Graphs](#)