



Public Health
Prevent. Promote. Protect.

**Winnebago County
Health Department**

Winnebago County Health Department COVID-19 Weekly Data Summary

February 25, 2021

Summary

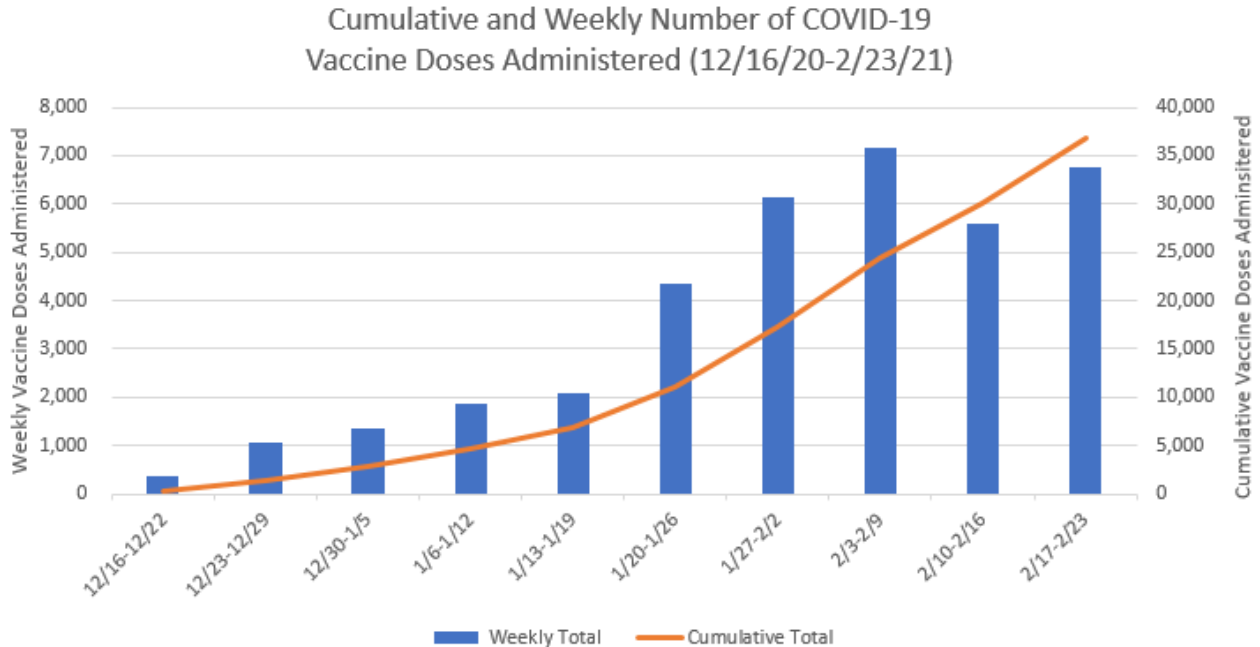
- Know your status. Anyone with symptoms or a suspected exposure to COVID-19 should be [tested](#) to help prevent the spread of disease. Case rates may be improving but they are still high. Any respiratory illness should be a suspected COVID-19 case. Most PCR results are returned within 24-36 hours. Wait times are short! Antigen testing is available at the [UWO Culver Welcome Center](#) with antigen results available in about 20 minutes. The Culver Center also provides PCR confirmation testing. If you have been tested, stay home until you receive your test results and [follow the guidance provided](#).
- School and club sports activities are causing significant spread of COVID-19. Keep apart, wear masks and do not host or participate in team social gathering events. The reopening of schools is being threatened by unsafe COVID-19 behaviors in non-classroom related youth activities. In recent weeks children under 18 have become the age group with the highest confirmed COVID-19 case rates.
- [Starting March 1st](#), education staff and staff in licensed child care settings will be added to the eligible population for receiving the COVID-19 vaccine. If you work in education or **licensed** child care settings, please connect with your employer regarding the vaccination plans for their employees.
- As of February 24, at least **36,749 COVID-19 vaccine doses** have been administered to Winnebago County residents that fall within [Phase 1a of the state's vaccination plan](#) or are 65 years or older, and 1,216,079 doses of COVID-19 vaccine have been administered to Wisconsin residents.
- It will take many weeks to fully vaccinate all the population currently eligible; please be patient and see [our website](#) for [updates](#) and [vaccine clinic locations](#). Being eligible does not mean vaccine is available right now.
- If you are eligible for a Phase 1a vaccination and have not been offered the vaccine, please check with your employer on their vaccination plan. If you are in Phase 1a and are not affiliated with a vaccine provider, please complete [this form](#) to be matched with a vaccinator.
- While it is very exciting that vaccine is arriving, it may take months before we have enough people vaccinated to reach an adequate level of community immunity. We have to be careful as case rates remain high and new contagious variants are circulating. Continue to stay home, wear a mask, socially distance and practice good hand hygiene to help avoid another surge in virus activity. Please see these [tips](#) for when you do get vaccinated.
- **Our confirmed + probable case burden remains high.** The confirmed + probable case rate over the past 2 weeks for our jurisdiction is 188.0 cases per 100,000 people, a decrease from 214.6 cases per 100,000 reported last week. The number of cases (confirmed/probable) in the first week of this 2-week timeframe was 102/50 and for this most recent week is 89/48. Individuals under 18 had the highest confirmed case rates of 216.6 per 100,000. Rates are lowest in those 50-59 (65.7 per 100,000).
- There are currently 17 COVID-19 patients hospitalized in the Fox Valley.
- There has been a total of 181 confirmed COVID-19 deaths among confirmed and probable cases.
- Over this past week, 2.6% of [PCR tests in Wisconsin](#) were positive and 2.6% of PCR tests across all of Winnebago County were positive. Many people with symptoms are only receiving antigen tests, which are excluded from our percent positivity calculation and likely leads to artificially lower percentages.
- Over the past two weeks, a daily average of 499 PCR tests were conducted among residents within the Winnebago County Health Department jurisdiction.
- We continue to ask for the community's help with notification of [close contacts](#). Early notification and [quarantine](#) of exposed individuals is an important tool in limiting spread of COVID-19. View our website for updated [testing information](#). WI Department of Health Services also encourages residents to download the [WI Exposure Notification app](#) to assist in notifying contacts of people who have tested positive for COVID-19.

COVID-19 Vaccination Data

Winnebago County is vaccinating currently eligible individuals, which includes individuals in Phase 1a (such as healthcare providers, long term care facilities and first responders) and adults aged 65 and older. See a [complete list](#) of who is eligible for Phase 1a in Wisconsin.

As of 2/24/2021, **1,216,079 doses** of COVID-19 vaccine have been administered to [Wisconsin residents](#).

As of 2/24/2021, **36,749 doses** of COVID-19 vaccine have been administered to Winnebago County residents, with 6,658 residents having completed the vaccine series.



This table shows the number and percent of Winnebago County residents who have received at least one dose of the COVID-19 vaccine by demographic breakdown. Data will differ slightly from what is posted on the [DHS website](#) due to differences in population estimates used and because the data is extracted at a different time of day.

		Number	Percent	Population			Number	Percent	Population
Ethnicity	Hispanic or Latino	246	3.6%	6,789	Sex	Female	15,277	18.1%	84,329
	Not Hispanic or Latino	23,315	14.3%	163,137		Male	9,559	11.2%	85,597
	Unknown	1,313				Unknown	38		
Race	American Indian or Alaska Native	72	7.4%	970	Age Group	15-17	22	0.4%	35,149
	Asian	272	5.9%	4,582		18-24	733	3.6%	20,521
	Black or African-American	111	2.9%	3,829		25-34	1,665	7.4%	22,459
	Native Hawaiian or Other Pacific Islander	17	85.0%	20		35-44	1,973	9.8%	20,167
	Other Race	1,125	28.5%	3,954		45-54	2,055	9.0%	22,863
	White	21,595	13.8%	156,571		55-64	2,360	10.4%	22,593
	Unknown	1,682				65-74	8,166	56.7%	14,399
					75+	7,900	67.1%	11,775	

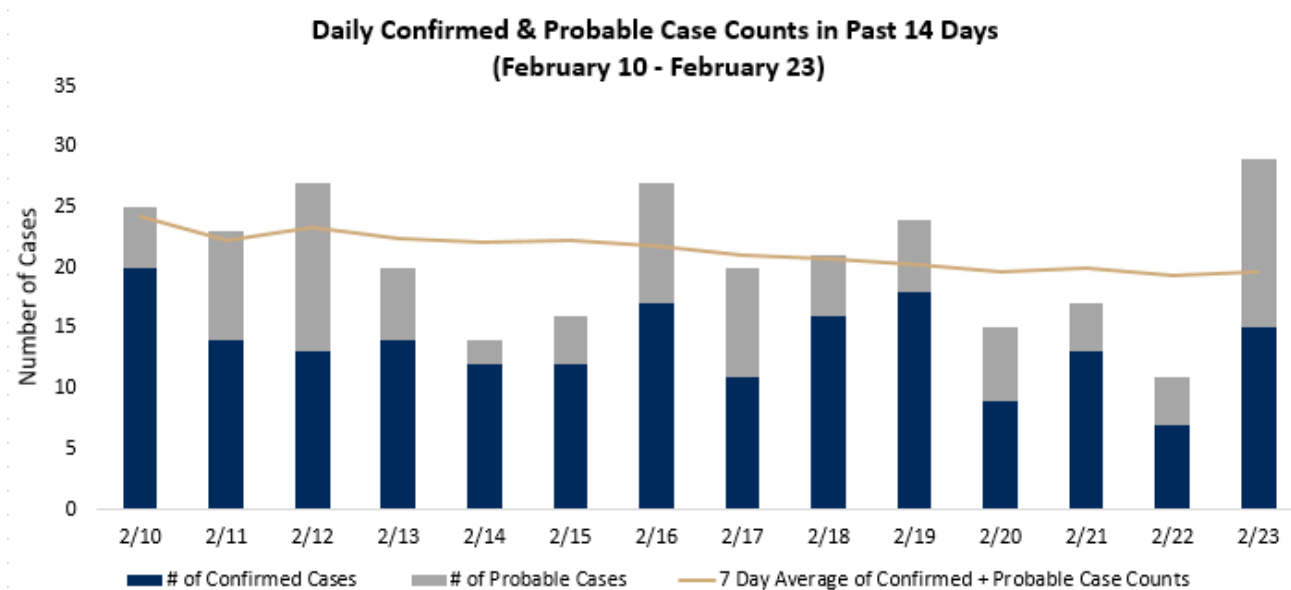
Reported Case Counts

	Case Counts for the Past 14 Days 2/10/2021-2/23/2021	Cumulative Case Counts 3/9/2020-2/24/2021
Confirmed Cases	191	14,079
Active Cases		147 (1% of cumulative cases)
Recovered Cases		13,774 (98% of cumulative cases)
Probable Cases	98	2,483
Negative Cases	2,031	75,859
Deaths**	1	181
Among Confirmed Cases		1 158
Among Probable Cases		0 23

**Death certificate must list COVID-19 (or the virus causing COVID-19) as a cause of death or a significant condition contributing to death. Healthcare providers and/or coroner determines cause of death. Includes deaths among PCR confirmed cases and probable cases.

Case Count by Day – Last 2 Weeks

When there is adequate testing in place, trending daily case counts show if the disease is spreading or shrinking and the overall burden of disease in our area. This graph shows the number of confirmed cases by test result date and probable cases by the date their case file was created. **There was an average of 20.6 confirmed and probable cases per day, which is a decrease from 23.6 confirmed and probable cases per day reported last week. Total daily confirmed and probable cases ranged from 11 to 29 cases.** There was an average of 13.6 confirmed cases per day, which is a decrease from 15.4 cases per day reported last week. There was an average of 7 probable cases per day, which is a decrease from 8 probable cases per day reported last week. The trend line shows the 7-day average for the combined total of confirmed and probable cases. For a full disease curve, see the [dashboard](#) on our [website](#).



Daily confirmed case counts presented here may differ from our situation update and the cases by day graph reported on our dashboard. This chart reflects the test result date instead of the date when the results are actually received by the health department.

A person is counted as a confirmed COVID-19 case if they had a positive test result using a confirmatory diagnostic test that detect the genetic material of SARS-CoV-2, the virus that causes COVID-19 (polymerase chain reaction (PCR) tests or nucleic acid amplification tests (NAT)). Reasons a person could be counted as a probable case include: a positive antigen test, positive antibody test, or diagnosis due to symptoms and known exposure to COVID-19.

Burden Status

Burden status is the total number of reported cases per 100,000 residents in the last two weeks.

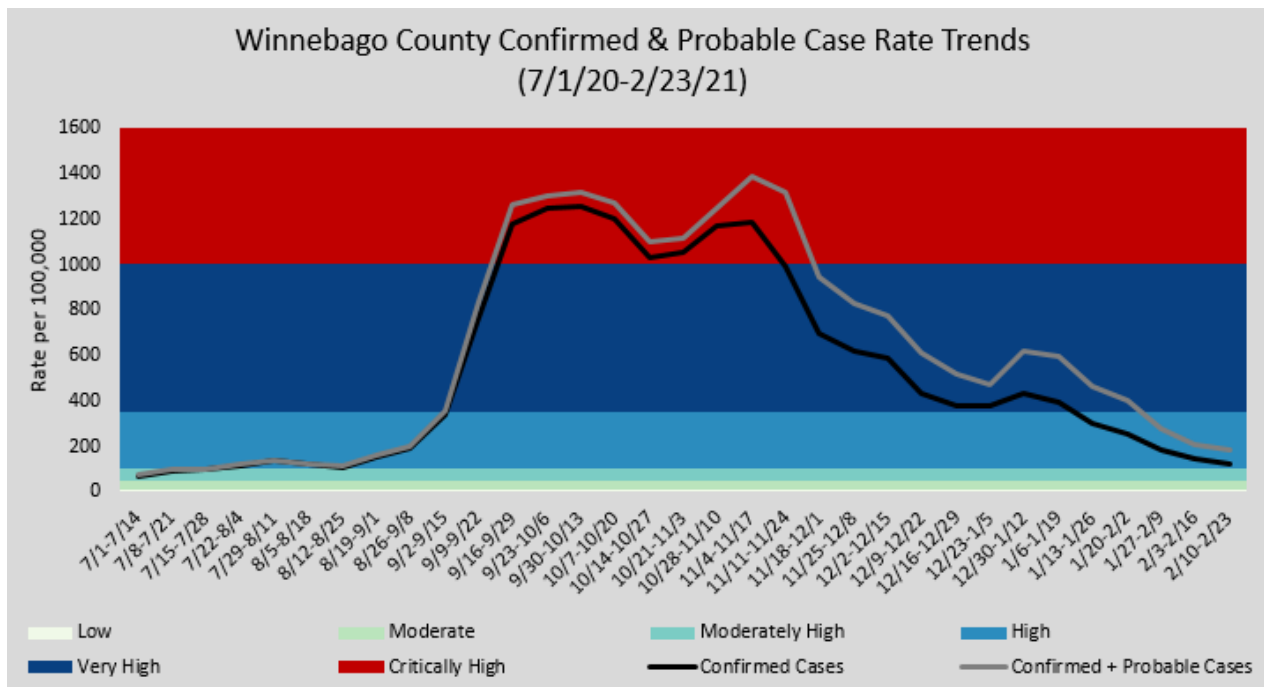
Dates	Confirmed Cases	Probable Cases	Total (Confirmed + Probable)
2/10-2/16	102	50	152
2/17-2/23	89	48	137
Total for last two weeks	191	98	289
Case rates for last two weeks (per 100,000 population)	124.2	63.7	188.0

Burden Status	Case Rate per 100,000 residents in the past two weeks	Number of Cases in the past two weeks
Low	Case rate is less than or equal to 10.	Less than 15 cases
Moderate	Case rate is greater than, but less than or equal to 50.	Greater than 15 cases, but less than or equal to 77 cases.
Moderately High	Case rate is greater than 50, but less than or equal to 100.	Greater than 77 cases, but less than or equal to 154 cases.
High	Case rate is greater than 100, but less than or equal to 350.	Greater than 154 cases, but less than or equal to 538 cases.
Very High	Case rate is greater than 350, but less than or equal to 1000.	Greater than 538 cases, but less than or equal to 1,537 cases.
Critically High	Case rate is greater than 1000.	Greater than 1,537 cases.

Case rate is determined by number of new confirmed cases in a particular group (such as an age group) during the past two weeks, divided by the population of that particular group, multiplied by 100,000. View the [DHS COVID Local Activity Level](#) page to learn more about burden status.

Biweekly Confirmed & Probable Case Rate Trends

The graphs below show confirmed case rate per 100,000 people and the confirmed + probable case rate for the Winnebago County Health Department Jurisdiction. These case rates are based on confirmed and probable case counts during a two-week time span.

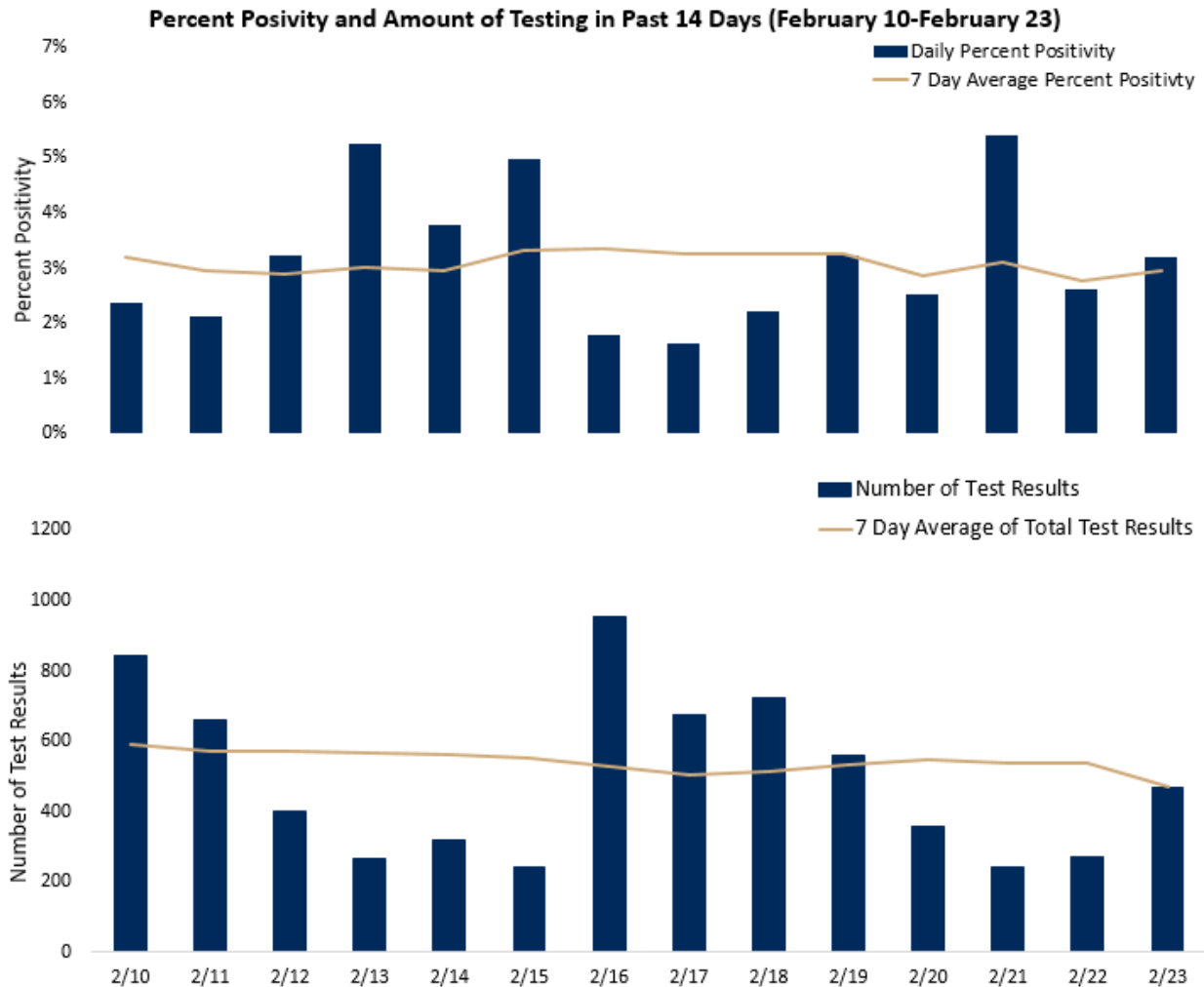


Amount of Testing and Percent Positivity

Adequate testing capacity and utilization are necessary for identification of active infections of COVID-19, and investigations into those positive cases helps prevent the spread of the virus. Higher disease activity requires more testing to identify and isolate enough infected people to slow the spread. The percent positivity helps determine if there is adequate testing. A high percent positivity may indicate an inadequate amount of testing, which limits the number of identified cases and subsequent contact tracing used to help reduce the spread of the virus. Our current goal is to have enough testing to keep the percent positivity below 5%. View the [DHS COVID Local Activity Level](#) page to see percent positivity for the state, counties, and regions.

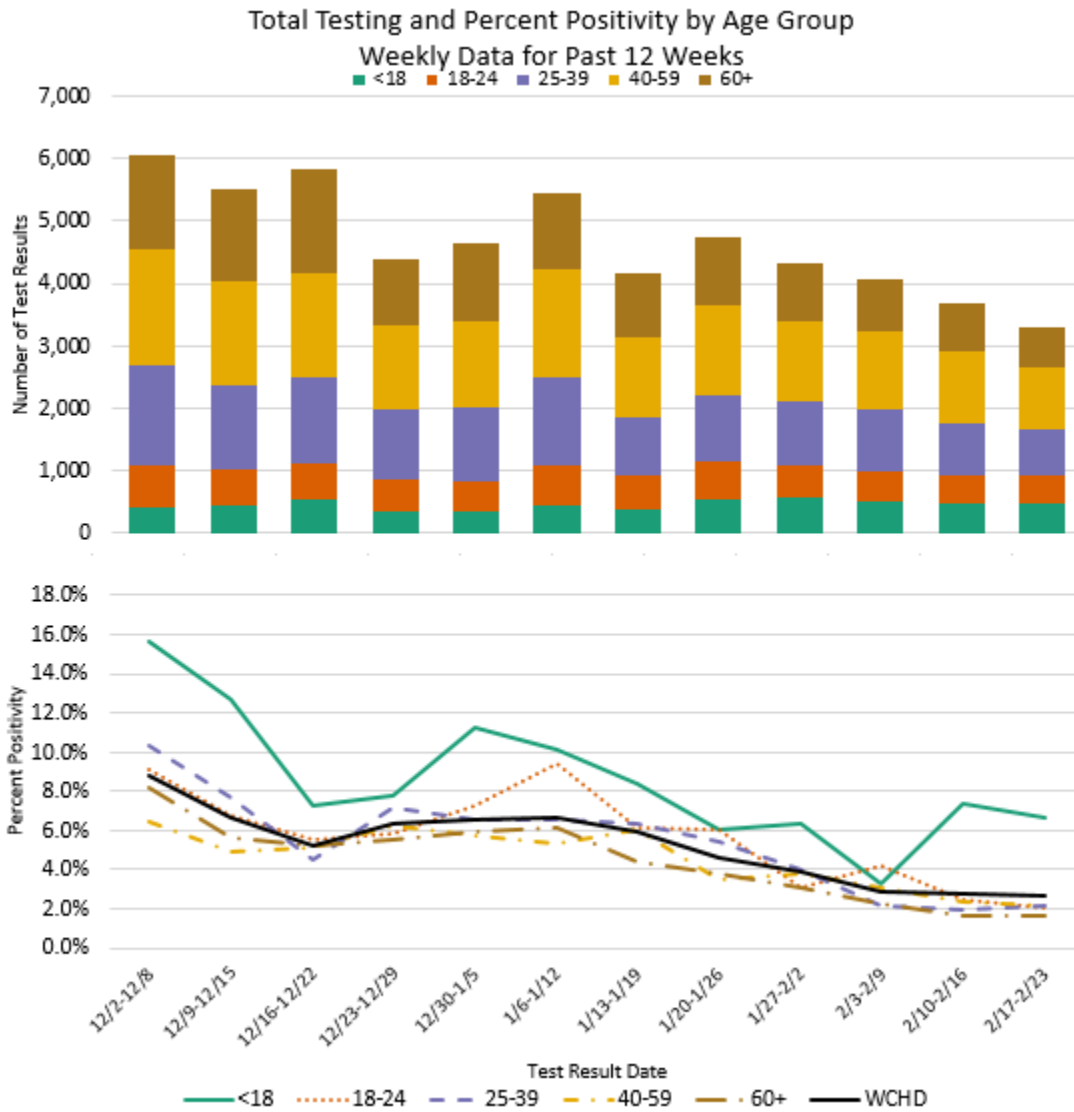
Over the past two weeks, **2.7% of PCR tests were positive**, which is a decrease from 3.0% positivity last week. Daily positivity ranged from 1.6% to 5.2%. Over the past two weeks an **average of 499 PCR tests** were conducted each day among residents within the Winnebago County Health Department jurisdiction. Antigen tests are not included in the testing numbers or the percent positivity calculation. A PCR confirmed case is only counted once in the percent positivity calculation, meaning a person with multiple positive PCR tests only counts as one confirmed case.

[Testing](#) is available at the [regional COVID-19 testing site](#) at Sunnyview Expo Center in Oshkosh as well as other locations including [CVS pharmacies](#) and multiple community test sites in [Oshkosh](#), [Neenah](#), [Menasha](#), [Fond du Lac](#), [Appleton](#), and [Waupaca](#).



Amount of Testing and Percent Positivity by Age Group

The figures below show the percent positivity and total testing numbers by age group. Antigen tests are not included in the testing numbers or the percent positivity calculation. A PCR confirmed case is only counted once in the percent positivity calculation, meaning a person with multiple positive PCR tests only counts as one confirmed case. **Over the past week**, individuals aged <18 had the highest percent positivity (6.6%) and those under 18 had the lowest testing rate (1,558 tests per 100,000 individuals under 18 years old).

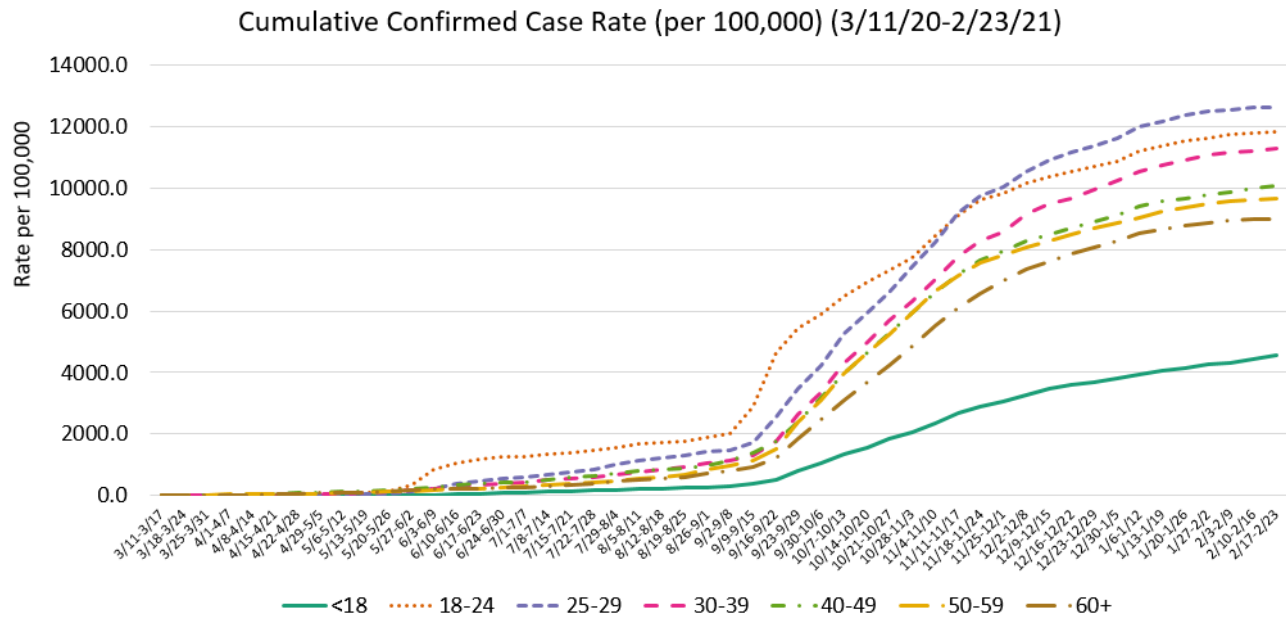


View national percent positivity trends [here](#).

2/17/21-2/23/21	<18	18-24	25-39	40-59	60+	Total
Percent Positivity	6.6%	2.0%	2.1%	2.2%	1.7%	2.7%
Testing Rates per 100,000 population	1,558	2,324	2,544	2,358	2,018	2,156
Number of Tests	482	444	748	969	653	3,296
Population	30,928	19,108	29,405	41,095	32,359	152,895

Trending by Age Group

This graph shows how cumulative confirmed case rates by age group have changed over time. Cumulative case rates will always trend upward; it is the rate of increase in that trend that helps us understand what populations are being impacted the most.



This table shows the case count and case rate by age group for the past two weeks and cumulatively. Over the past two weeks, **individuals aged <18 had the highest confirmed case rate.**

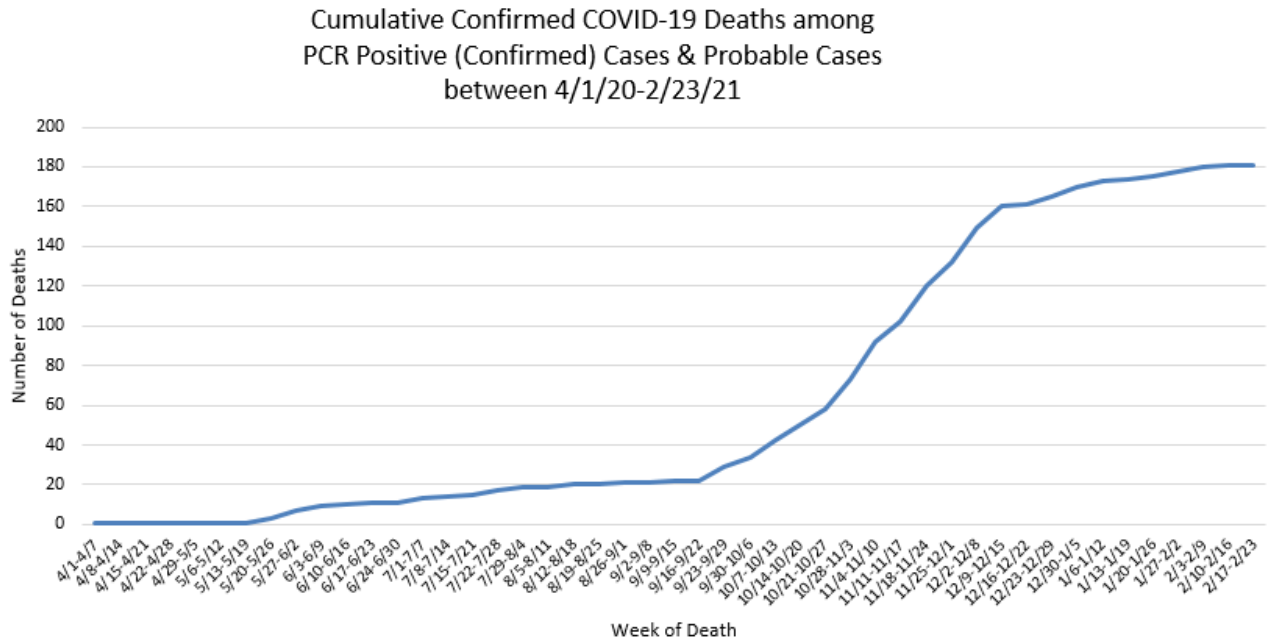
Age Group	Past Two Weeks (2/10/21-2/23/21)				Doubling Time (Days)	Cumulative Confirmed Case Count	Population***
	Case Count	Case Rate (per 100,000)	Percent increase in total cases in that age group	Percent of Cumulative Cases in that age group			
<18	67	216.6	5.0%	4.8%	201	1,405	30,928
18-24	20	104.7	0.9%	0.9%	1104	2,263	19,108
25-29	9	88.8	0.7%	0.7%	1390	1,281	10,132
30-39	23	119.3	1.1%	1.1%	921	2,173	19,273
40-49	33	180.6	1.8%	1.8%	541	1,838	18,269
50-59	15	65.7	0.7%	0.7%	1436	2,205	22,826
60+	24	74.2	0.8%	0.8%	1185	2,914	32,359

***Age Group Population Data comes from the [2018 census](#). Total Population size across all age groups (152,895) differs slightly from total population size used to calculate Winnebago County Health Department jurisdiction case rate (153,748) which was determined using 2020 population data from the [WI Department of Administration](#).

Confirmed COVID-19 Deaths

Confirmed COVID-19 deaths include deaths among PCR confirmed cases and probable cases. Confirmed COVID-19 deaths have a death certificate that lists COVID-19 disease or SARS-CoV-2 as a cause of death or a significant condition contributing to death. Healthcare providers or medical examiners/coroners determine cause of death. Public reporting of COVID-19 deaths lag while waiting for confirmation.

In the graph below, the data for recent weeks is preliminary and subject to change. Recent deaths are still pending as we await confirmation on cause of death.



These tables show case counts for confirmed COVID-19 deaths by age group and housing type, as well as by ethnicity, race, and sex.

All Confirmed COVID-19 Deaths by Age Group and Housing Type					
Age Group	Not Group	LTCF/ Group	Total Deaths	Rate per 100,00	Population
<60	15	1	16	13.3	120,536
60-69	19	6	25	151.6	16,491
70-79	27	14	41	427.4	9,594
80-89	32	31	63	1,577.9	6,274
90+	8	28	36		
Total	101	80	181	118.4	152,895

All Confirmed COVID-19 Deaths by Ethnicity, Race, and Sex		
Ethnicity	Hispanic/Latino or Unknown	11
	Not Hispanic/Latino	170
Race	Other or Unknown	11
	White	170
Sex	Female	75
	Male	106

Long-term care facility (LTCF): nursing homes, assisted living facilities

Group housing facility: Group housing facilities include city and county jails, homeless shelters, dormitories and group homes. Deaths among those living in Wisconsin Department of Corrections facilities (including Oshkosh Correctional Institute) are not included here.

Not group housing facility: single family homes, apartments, condos, duplexes or townhouses

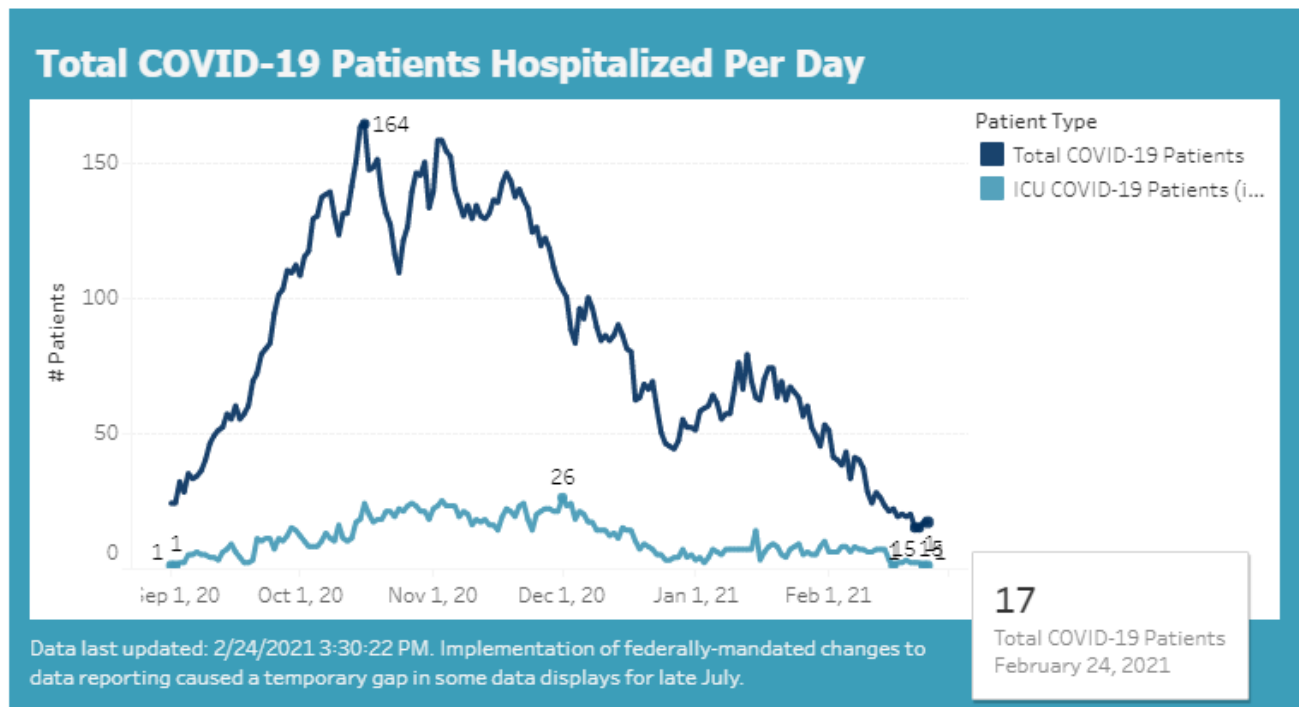
Healthcare Measures for the Fox Valley Area

The Fox Valley Area HERC Region includes Calumet, Green Lake, Menominee, Outagamie, Shawano, Waupaca, Waushara and Winnebago Counties.

It is vital that healthcare systems have adequate capacity to manage patient care in the context of a surge caused by COVID-19. Through adequate testing, case identification and investigation we can help keep case counts at levels that are manageable by our healthcare systems. When healthcare systems exceed their capacity, the ability to treat severe illness is compromised and patients do worse and/or do not get the care they need to survive the illness.

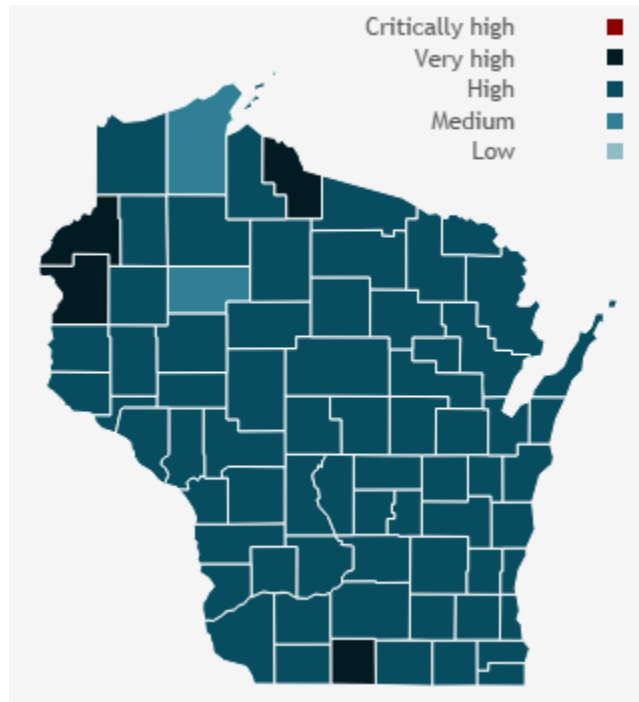
COVID-19 hospitalizations continue to remain high across the state. As of 2/24/2021, there were **17 COVID-19 patients hospitalized** in the Fox Valley Area hospitals with 1 of those patients in the ICU.

To view more information on healthcare measures in the Fox Valley Area and across the state, please visit <https://www.wha.org/COVID19Update> and <https://www.dhs.wisconsin.gov/covid-19/hosp-data.htm>



Burden, Trajectory, and Activity Level Across Wisconsin in Past 14 Days

Updated 2/24/2021



The Wisconsin Department of Health Services classifies regions and counties as critically high, very high, high, medium, or low activity levels for COVID-19 spread by combining the case burden (case rate) and trajectory (change in cases over time) indicators. The state updates this information weekly on Wednesdays by 5 p.m. As of February 24, 2021, Winnebago County**** and the Fox Valley Region are both classified as having a **high COVID-19 activity level**.

To view more information on these metrics, please visit <https://www.dhs.wisconsin.gov/covid-19/local.htm>

Area	Case Count (Past 14 days)	Burden	Trajectory	Activity Level
Winnebago	259	152.9 High	N/A ↔	High ■
Fox Valley Area	841	154.2 High	N/A ↔	High ■
Outagamie	345	187.7 High	N/A ↔	High ■
Wisconsin	9,440	163.3 High	-16% ▼	High ■

A trajectory of N/A means there was no significant change in the percent change in cases for this week compared to the previous week.

****This data is provided by the [Department of Health Services](#) and may be different than the information provided by WCHD because the state reports data for the entire county, which includes the portions of Winnebago County that fall within the jurisdiction of the [City of Menasha Health Department](#) and [City of Appleton Health Department](#).

Background Information

This report provides *preliminary* data on confirmed COVID-19 cases from February 10, 2021 – February 23, 2021. **A person is counted as a confirmed COVID-19 case if they had a positive confirmatory laboratory test (for example, polymerase chain reaction (PCR) tests or nucleic acid amplification tests (NAT) that detect genetic material of SARS-CoV-2, the virus that causes COVID-19). Antigen positive tests are counted as probable cases.**

Dates utilized for all graphs and tables are based on test result date and may not represent final reported case counts. Data may be underreported for recent days because results can take multiple days to be reported to the health department. This means the number of tests and percent positivity may change in next week's report. As this is a weekly report for the past 14 days, there will always be a week of overlap between reports.

*The COVID-19 data provided in this report is specific to the Winnebago County Health Department (WCHD) jurisdiction (population: 153,748). It does not include the portions of Winnebago County that fall within the jurisdiction of the [City of Menasha Health Department](#) and [City of Appleton Health Department](#). As of October 3, 2020, data reports from the Winnebago County Health Department do not include test results from residents in Wisconsin Department of Corrections facilities, which includes the Oshkosh Correctional Institute. This data can be found on the Wisconsin Department of Corrections [website](#).

Data provided on the [Department of Health Services website](#) may be different than information provided by WCHD because the state reports data for the entire county based on address, which includes those portions of Menasha and Appleton as well as the correctional facilities.

For additional Winnebago County Health Department COVID-19 information:

- [WCHD COVID-19 Webpage](#)
- [Municipality Weekly Data Summaries](#)
- [School District Weekly Data Summaries](#)