



**Public Health**  
Prevent. Promote. Protect.

**Winnebago County  
Health Department**

# Winnebago County Health Department COVID-19 Weekly Data Summary

December 23, 2020

## Summary

- The [COVID-19 vaccine](#) is now flowing into Wisconsin and Winnebago County. Healthcare systems began receiving the vaccine over the past week and nursing homes will be receiving the vaccine next week.
- If you are using options to [shorten quarantine](#) be sure to continue to symptom monitor a full 14 days, keep a mask on, [social distance](#), and do not participate in group activities for the full 14 days.
- **Stay at home.** If you are over 65 or have significant health conditions, avoid indoor public spaces where anyone is unmasked due to the immediate risk to your health. Whenever possible, have your groceries and medications delivered. If you develop any symptoms, get tested immediately as the majority of therapeutics work best early during infection. If you are under 40, it is possible you may be infectious to others when you do not have symptoms or your symptoms are mild. Avoid gathering with anyone outside your home, especially those at [increased risk for severe disease](#), and get tested after a known or potential exposure to the virus or if you have any symptoms, even if they are mild.
- We are seeing a decrease in cases and overall testing numbers in recent weeks. **Our burden still remains very high.** Please continue to look at the weekly trends to best assess current case activity. Be careful during the holidays! Stay home and avoid family gatherings outside your immediate household members.
- Safely [support local businesses](#). Use local curbside pickup and delivery to help support local service industries. When you seek goods and services, support businesses that engage in precautionary measures to keep our communities safe. If a business is not following safe practices, consider speaking with management or reporting your concern to the health department through this [form](#).
- **Deaths continue to rise.** 40% of the 138 confirmed COVID-19 deaths in our jurisdiction have occurred in the past 6 weeks.
- The ability for [hospitals](#) to care for all patients is strained as COVID-19 hospitalizations remain high and healthcare facilities experience staffing shortages. As of 12/23/20, Fox Valley area hospitals had 59 COVID-19 patients hospitalized, a decrease from the 81 patients last week. [The Wisconsin State Fair Park Alternate Care Facility](#) currently has 2 patients.
- The confirmed + probable case rate over the past 2 weeks for our jurisdiction is 613.3 cases per 100,000 people, a decrease from the 759.7 cases per 100,000 last week. The number of cases (confirmed/probable) in the first week of this 2-week timeframe was 363/114 and for this most recent week is 296/170. Cases are distributed throughout all jurisdictions and adult age groups. Individuals aged 25-29 had the highest confirmed case rate of 611.9 per 100,000 over the past 2 weeks. Rates are lowest in those under 18 (310.4 per 100,000).
- Over this past week, 9.1% of [PCR tests in Wisconsin](#) were positive and 6.9% of PCR tests across all of Winnebago County were positive, which is still above our goal of remaining below 5% positivity. Many people with symptoms are only receiving antigen tests, which are excluded from our percent positivity calculation, leading to artificially lower percentages.
- Over the past two weeks, an average of 709 PCR tests were conducted each day among residents within the Winnebago County Health Department jurisdiction. The [regional COVID-19 testing](#) site at Sunnyview Expo Center in Oshkosh has averaged 226 PCR tests per day over the past 2 weeks. If you have been tested, please stay home until you receive your test results and follow the guidance provided.
- **Contact tracing capacity has expanded recently due to increased staff capacity.** We continue to ask for the community's help with notification of [close contacts](#). Early notification and [quarantine](#) of exposed individuals is an important tool in limiting spread of COVID-19. View our website for updated [testing information](#).

## Background Information

This report provides *preliminary* data on the confirmed COVID-19 cases from December 9 – December 22, 2020. **A person is counted as a confirmed COVID-19 case if they had a positive confirmatory laboratory test (for example, polymerase chain reaction (PCR) tests or nucleic acid amplification tests (NAT) that detect genetic material of SARS-CoV-2, the virus that causes COVID-19). Antigen positive tests are counted as probable cases.**

Dates utilized for all graphs and tables are based on test result date and may not represent final case counts. Data may be underreported for recent days because results can take multiple days to be reported to the health department. This means the number of tests and percent positivity may change in next week's report. As this is a weekly report for the past 14 days, there will always be a week of overlap between reports.

\*The COVID-19 data provided in this report is specific to the Winnebago County Health Department (WCHD) jurisdiction (population: 153,748). It does not include the portions of the City of Menasha or City of Appleton that fall within Winnebago County as those areas fall within the jurisdiction of the [City of Menasha Health Department](#) and [City of Appleton Health Department](#). With the increased amount of testing occurring in correctional facilities, starting October 3, 2020, data reports from the Winnebago County Health Department will not include test results from those living in Wisconsin Department of Corrections facilities, which includes the Oshkosh Correctional Institute. You can find testing data for the Wisconsin Department of Corrections on [this website](#).

Data provided on the [Department of Health Services website](#) may be different than the information provided by WCHD because the state reports data for the entire county based on address, which includes those portions of Menasha and Appleton as well as the correctional facilities.

**For additional Winnebago County Health Department COVID-19 information:**

- [WCHD COVID-19 Webpage](#)
- [Municipality Weekly Data Summaries](#)
- [School District Weekly Data Summaries](#)

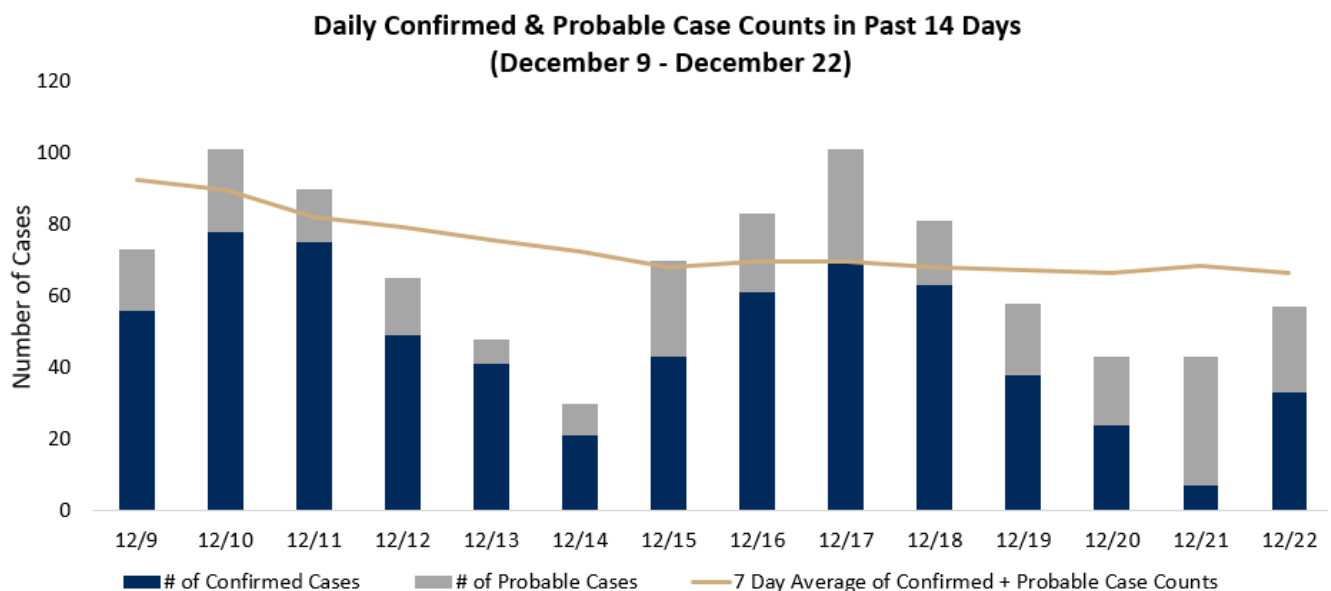
## Case Counts

	Case Counts for the Past 14 Days 12/9/2020-12/22/2020	Cumulative Case Counts 3/9/2020-12/23/2020
Confirmed Cases	659	12,178
Active Cases		455 (4% of cumulative cases)
Recovered Cases		11,598 (95% of cumulative cases)
Probable Cases	284	1,661
Negative Cases	3,663	65,348
Deaths**	8	138
Among Confirmed Cases	7	125
Among Probable Cases	1	13

\*\*Death certificate must list COVID-19 (or the virus causing COVID-19) as a cause of death or a significant condition contributing to death. Healthcare providers and/or coroner determines cause of death. Includes deaths among PCR confirmed cases and probable cases.

## Case Count by Day – Last 2 Weeks

When there is adequate testing in place, trending daily case counts show if the disease is spreading or shrinking and what the overall burden of disease is in our area. This graph shows the number of confirmed cases by the test result date and probable cases by the date their case file was created. **There was an average of 47.1 confirmed cases per day, which is a decrease from the 61.0 cases per day reported last week.** Daily confirmed cases ranged from 7 to 78. There was an average of 20 probable cases per day, which is a decrease from the 22 probable cases per day reported last week. The trend line shows the 7-day average for the combined total of confirmed and probable cases. For a full disease curve, see the [dashboard](#) on our [website](#).



Daily confirmed case counts presented here may differ from our situation update and the cases by day graph reported on our dashboard. This chart reflects the test result date instead of the date when the results are actually received by the health department. A person is counted as a confirmed COVID-19 case if they had a positive test result using a confirmatory diagnostic test that detect the genetic material of SARS-CoV-2, the virus that causes COVID-19 (polymerase chain reaction (PCR) tests or nucleic acid amplification tests (NAT)). Reasons a person could be counted as a probable case include: a positive antigen test, positive antibody test, or diagnosis due to symptoms and known exposure to COVID-19.

## Burden Status

Burden status is the total number of cases per 100,000 residents in the last two weeks.

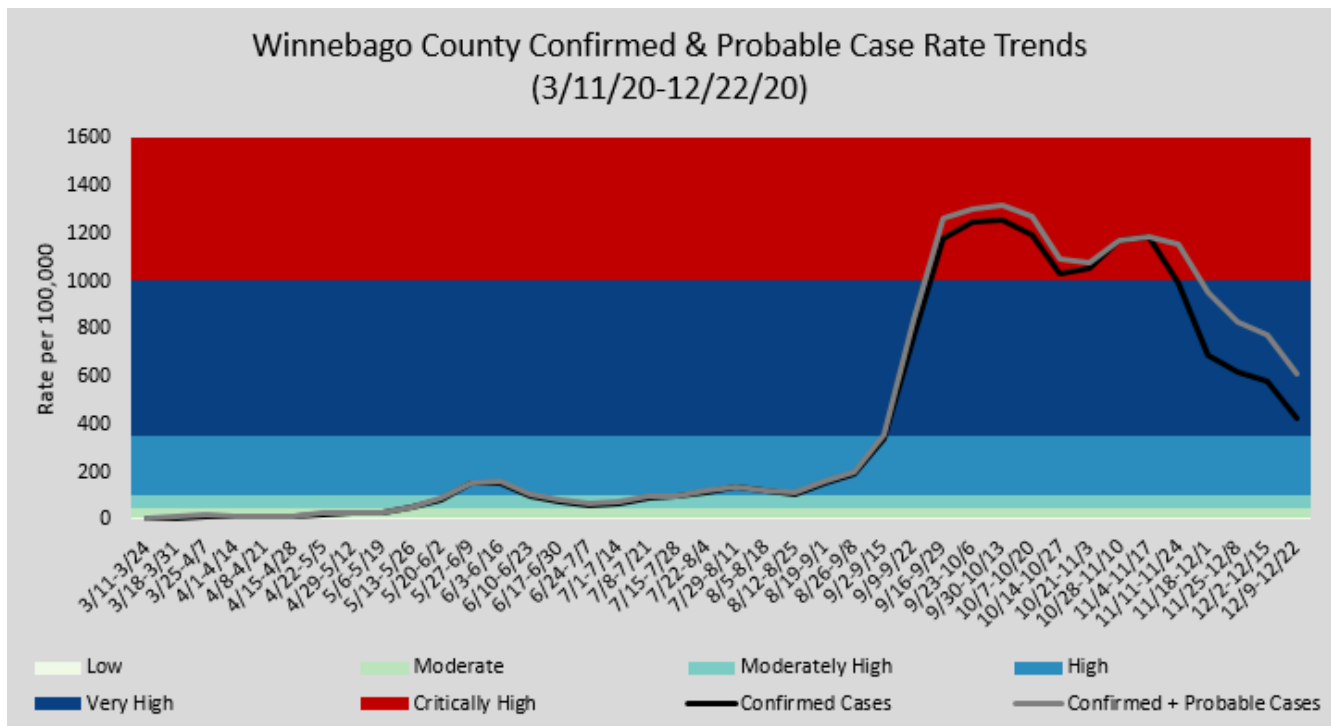
Dates	Confirmed Cases	Probable Cases	Total (Confirmed + Probable)
12/9-12/15	363	114	477
12/16-12/22	296	170	466
Total for last two weeks	659	284	943
Case rates for last two weeks (per 100,000 population)	428.6	184.7	613.3

Burden Status	Case Rate per 100,000 residents in the past two weeks	Number of Cases in the past two weeks
Low	Case rate is less than or equal to 10.	Less than 15 cases
Moderate	Case rate is greater than, but less than or equal to 50.	Greater than 15 cases, but less than or equal to 77 cases.
Moderately High	Case rate is greater than 50, but less than or equal to 100.	Greater than 77 cases, but less than or equal to 154 cases.
High	Case rate is greater than 100, but less than or equal to 350.	Greater than 154 cases, but less than or equal to 538 cases.
Very High	Case rate is greater than 350, but less than or equal to 1000.	Greater than 538 cases, but less than or equal to 1,537 cases.
Critically High	Case rate is greater than 1000.	Greater than 1,537 cases.

View the [DHS COVID Local Activity Level](#) page to learn more about these indicators.

## Biweekly Confirmed & Probable Case Rate Trends

The graphs below show confirmed case rate per 100,000 people and the confirmed + probable case rate for the Winnebago County Health Department Jurisdiction. These case rates are based on confirmed and probable case counts during a two-week time span.

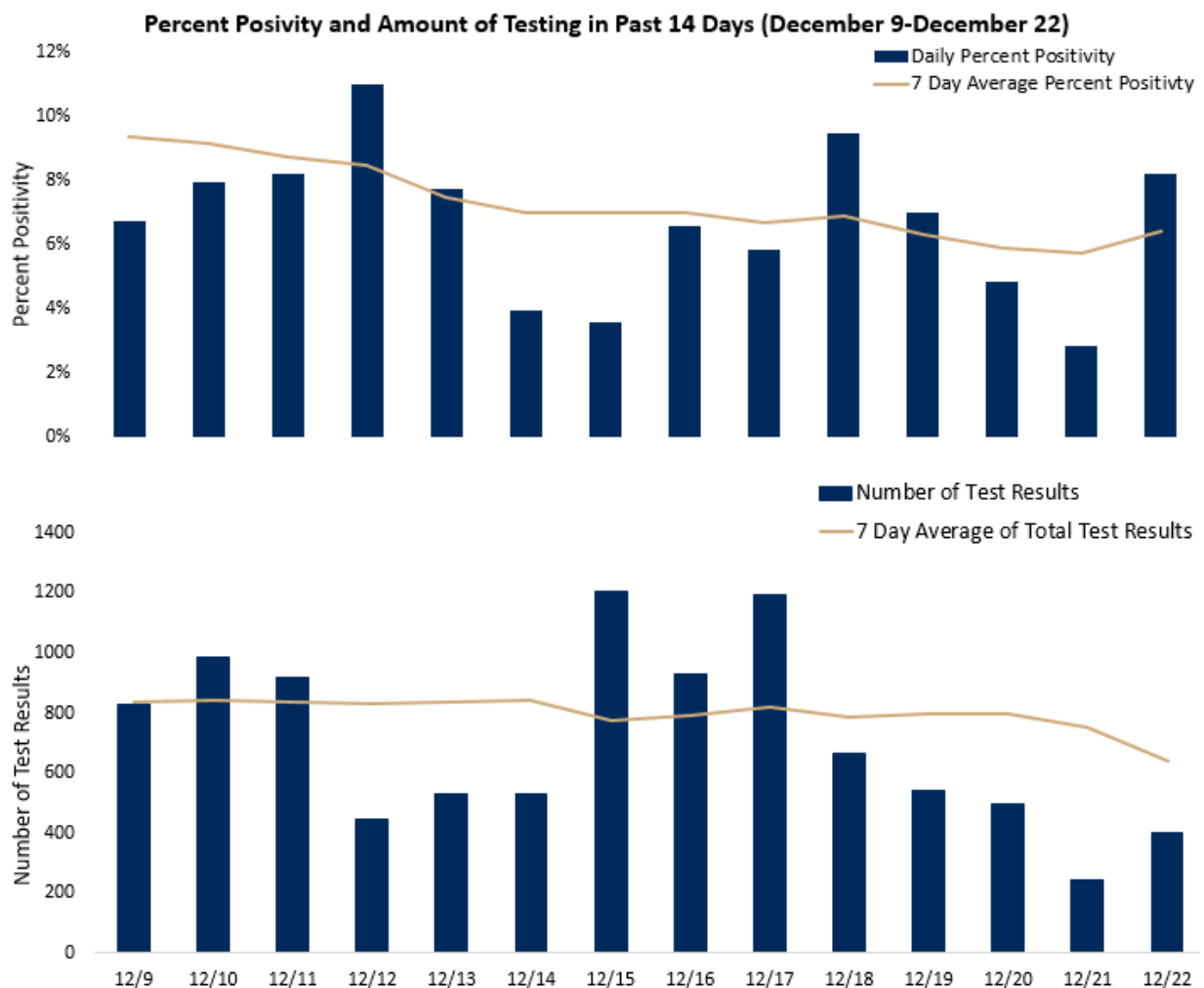


## Amount of Testing and Percent Positivity

Adequate testing capacity and utilization is necessary for identification of active infections of COVID-19. Only through identification of cases may they be investigated to help prevent spread to others. Higher disease activity requires more testing to identify and isolate enough infected people to slow the spread. The percent positivity helps determine if adequate testing is being performed. When percent positivity is high, it may indicate that testing is inadequate to identify enough cases to help control the spread of disease through contact tracing. Our current goal is to have enough testing to keep the percent positivity below 5%. View the [DHS COVID Local Activity Level](#) page to see percent positivity for the state, counties, and regions.

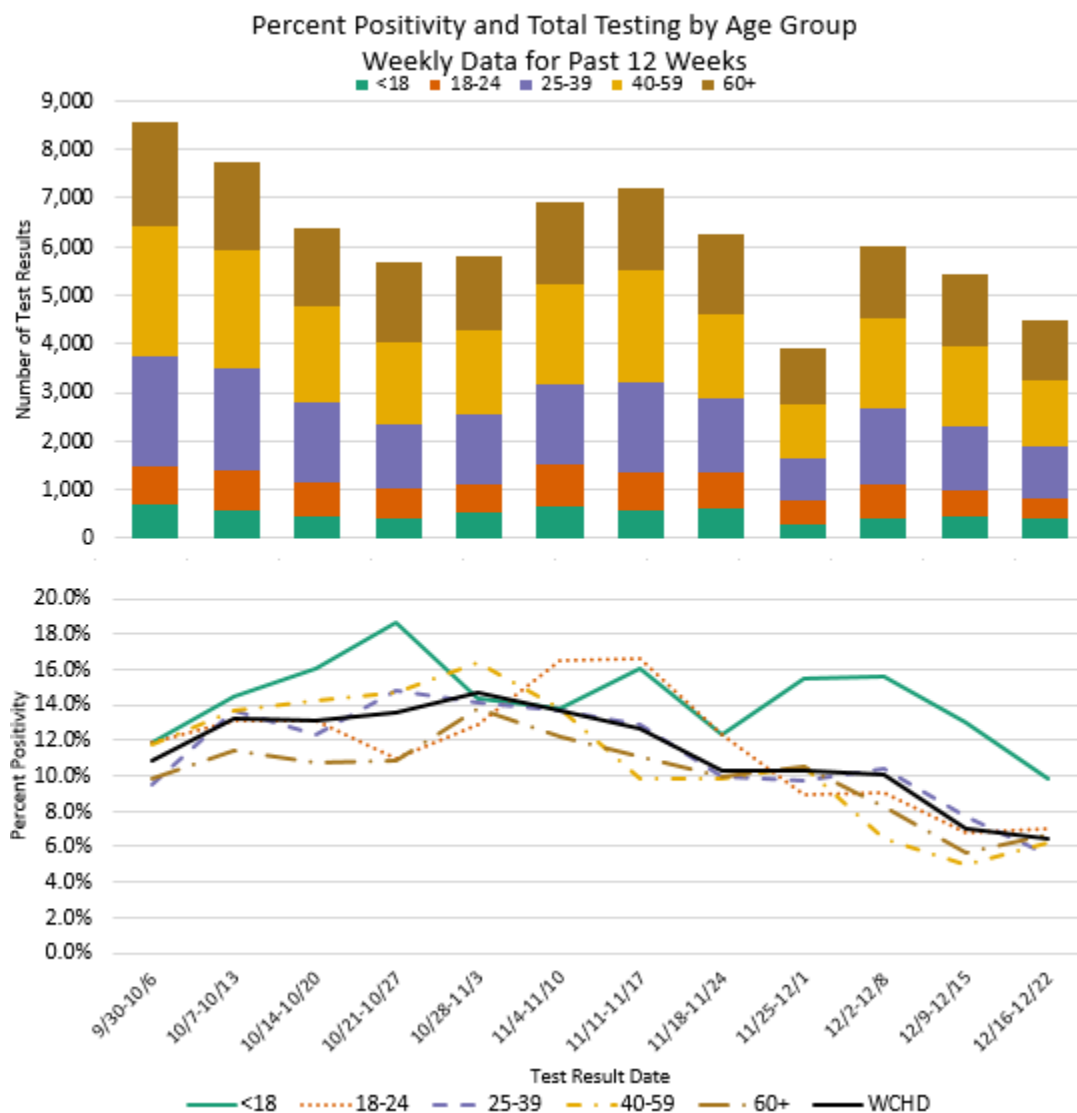
Over the past two weeks, an average of **6.7% of tests were positive**, which is a decrease from the 8.9% positivity reported in last week's summary. This percent positivity continues to remain above our goal of remaining below 5% positivity. Daily positivity ranged from 2.8% to 11.0%. Over the past two weeks an **average of 709 PCR tests** were conducted each day among residents within the Winnebago County Health Department jurisdiction. Antigen tests are not included in the testing numbers or the percent positivity calculation. A PCR confirmed case is only counted once in the percent positivity calculation, meaning a person with multiple positive PCR tests only counts as one confirmed case.

The [regional COVID-19 testing site](#) at the Sunnyview Expo Center in Oshkosh has averaged 226 tests per day over the past two weeks. [Testing](#) is also available at other locations including [CVS pharmacies](#) and multiple community test sites in [Oshkosh](#), [Neenah](#), [Menasha](#), [Fond du Lac](#), [Appleton](#), and [Waupaca](#).



## Amount of Testing and Percent Positivity by Age Group

The figures below show the percent positivity and total testing numbers by age group. Antigen tests are not included in the testing numbers or the percent positivity calculation. A PCR confirmed case is only counted once in the percent positivity calculation, meaning a person with multiple positive PCR tests only counts as one confirmed case. **Over the past week**, individuals under 18 years old had the highest percent positivity (14.9%) and the lowest testing rate (2583.4 tests per 100,000 individuals under 18 years old).

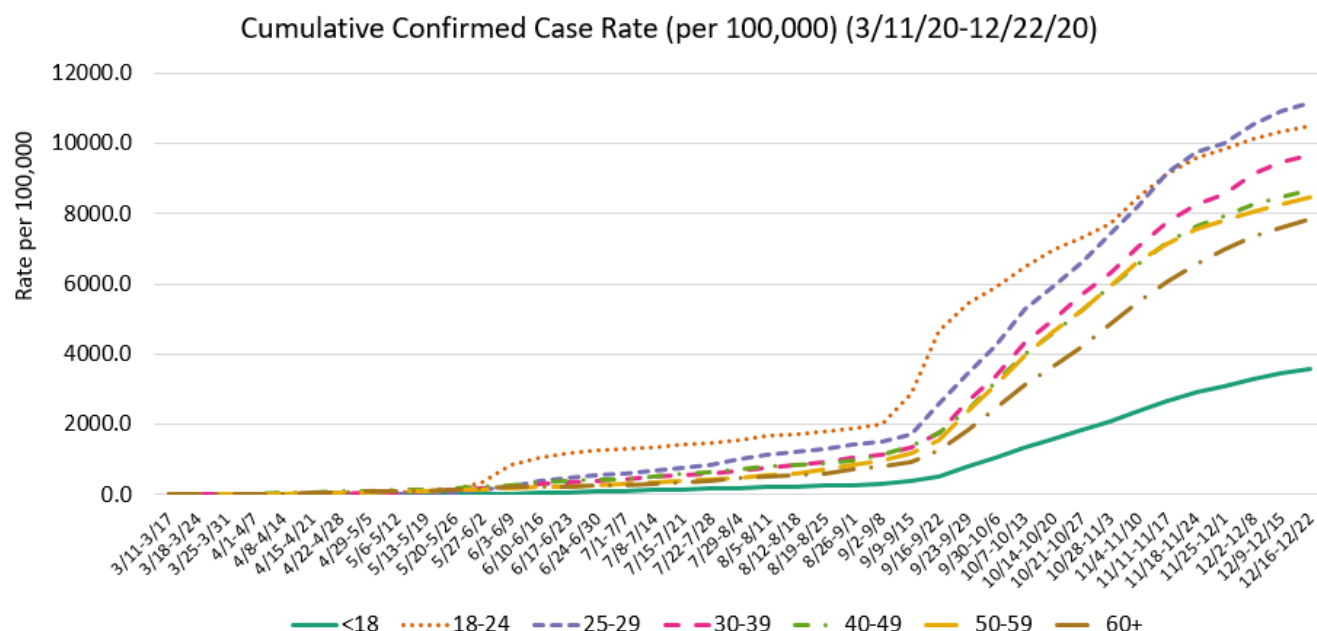


View national percent positivity trends [here](#).

12/16-12/22	<18	18-24	25-39	40-59	60+	Total
Percent Positivity	9.8%	7.0%	5.6%	6.2%	6.7%	6.4%
Testing Rates per 100,000 population	1,280	2,313	3,595	3,280	3,820	2,930
Number of Tests	396	442	1,057	1,348	1,236	4,480
Population	30,928	19,108	10,132	19,273	18,269	152,895

## Trending by Age Group

This graph shows how cumulative confirmed case rates by age group have changed over time. Cumulative case rates will always trend upward, it is the rate of increase in that trend that helps us understand what populations are being impacted the most. The cumulative case rate among those aged 25-29 (11,152.8 per 100,000) has surpassed the cumulative case rate among those aged 18-24 (10,503.5 per 100,000).



This table shows the case count and case rate by age group for the past two weeks and cumulatively. Over the past two weeks, **individuals aged 25-29 had the highest confirmed case rate.**

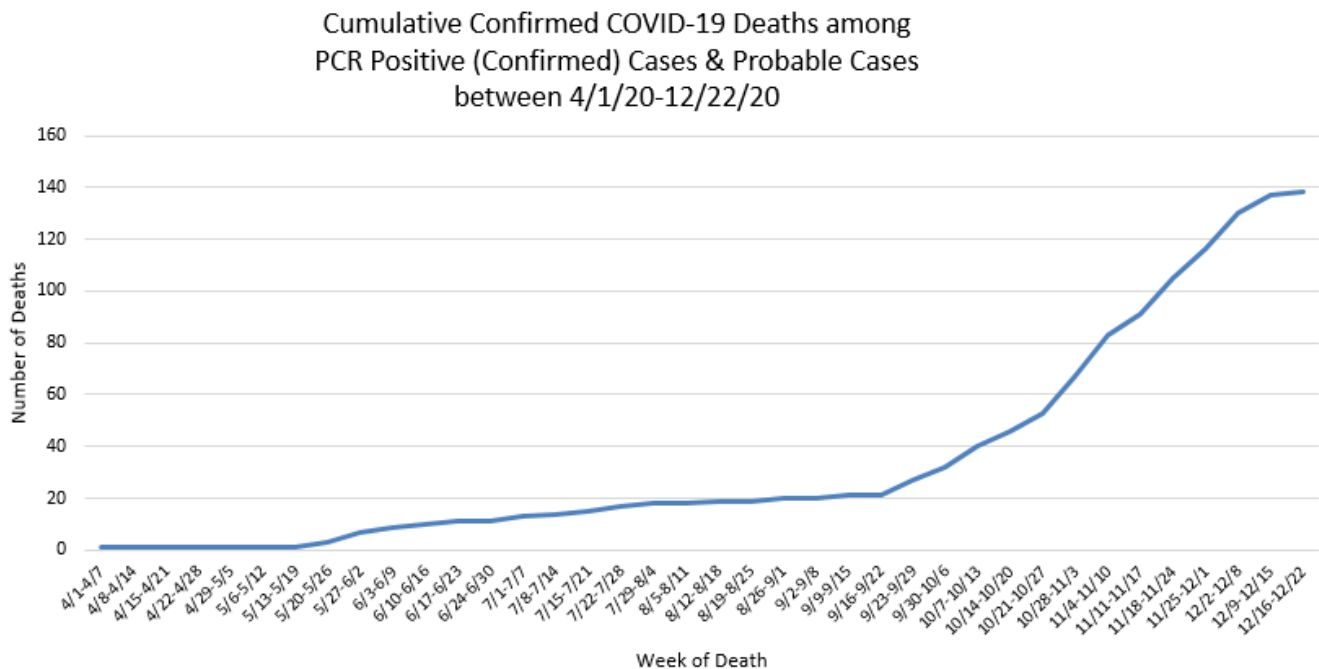
Age Group	Past Two Weeks (12/9/20-12/22/20)				Doubling Time (Days)	Cumulative Confirmed Case Count	Population***
	Case Count	Case Rate (per 100,000)	Percent increase in total cases in that age group	Percent of Cumulative Cases in that age group			
<18	96	310.4	9.5%	8.7%	108.2	1,109	30,928
18-24	69	361.1	3.6%	3.4%	280.1	2,007	19,108
25-29	62	611.9	5.8%	5.5%	173.7	1,130	10,132
30-39	99	513.7	5.6%	5.3%	179.4	1,862	19,273
40-49	78	427.0	5.2%	4.9%	194.6	1,588	18,269
50-59	89	389.9	4.8%	4.6%	207.8	1,932	22,826
60+	166	513.0	7.0%	6.5%	145.2	2,544	32,359

\*\*\*Age Group Population Data comes from the [2018 census](#). Total Population size across all age groups differs slightly from total population size used to calculate Winnebago County Health Department jurisdiction case rate (153,748) which was determined using 2020 population data from the [WI Department of Administration](#).

## Confirmed COVID-19 Deaths

Confirmed COVID-19 deaths include deaths among PCR confirmed cases and probable cases. Confirmed COVID-19 deaths have a death certificate that lists COVID-19 disease or SARS-CoV-2 as a cause of death or a significant condition contributing to death. Healthcare providers or medical examiners/coroners determine cause of death. Public reporting of COVID-19 deaths lag while waiting for confirmation.

In the graph below, the data for recent weeks is preliminary and subject to change. Recent deaths are still pending as we await confirmation on cause of death.



These tables show case counts for confirmed COVID-19 deaths by age group and housing type, as well as by ethnicity, race, and sex.

All Confirmed COVID-19 Deaths by Age Group and Housing Type					
Age Group	Not Group	LTCF/ Group	Total Deaths	Rate per 100,00	Population
<60	10	0	10	8.3	120,536
60-69	16	5	21	127.3	16,491
70-79	22	10	32	333.5	9,594
80-89	25	24	49	1,195.4	6,274
90+	5	21	26		
Total	78	60	138	90.3	152,895

All Confirmed COVID-19 Deaths by Ethnicity, Race, and Sex		
Ethnicity	Hispanic/Latino or Unknown	9
	Not Hispanic/Latino	129
Race	Other or Unknown	9
	White	129
Sex	Female	61
	Male	77

**Long-term care facility (LTCF):** nursing homes, assisted living facilities

**Group housing facility:** Group housing facilities include city and county jails, homeless shelters, dormitories and group homes. Deaths among those living in Wisconsin Department of Corrections facilities (including Oshkosh Correctional Institute) are not included here

**Not group housing facility:** single family homes, apartments, condos, duplexes or townhouses



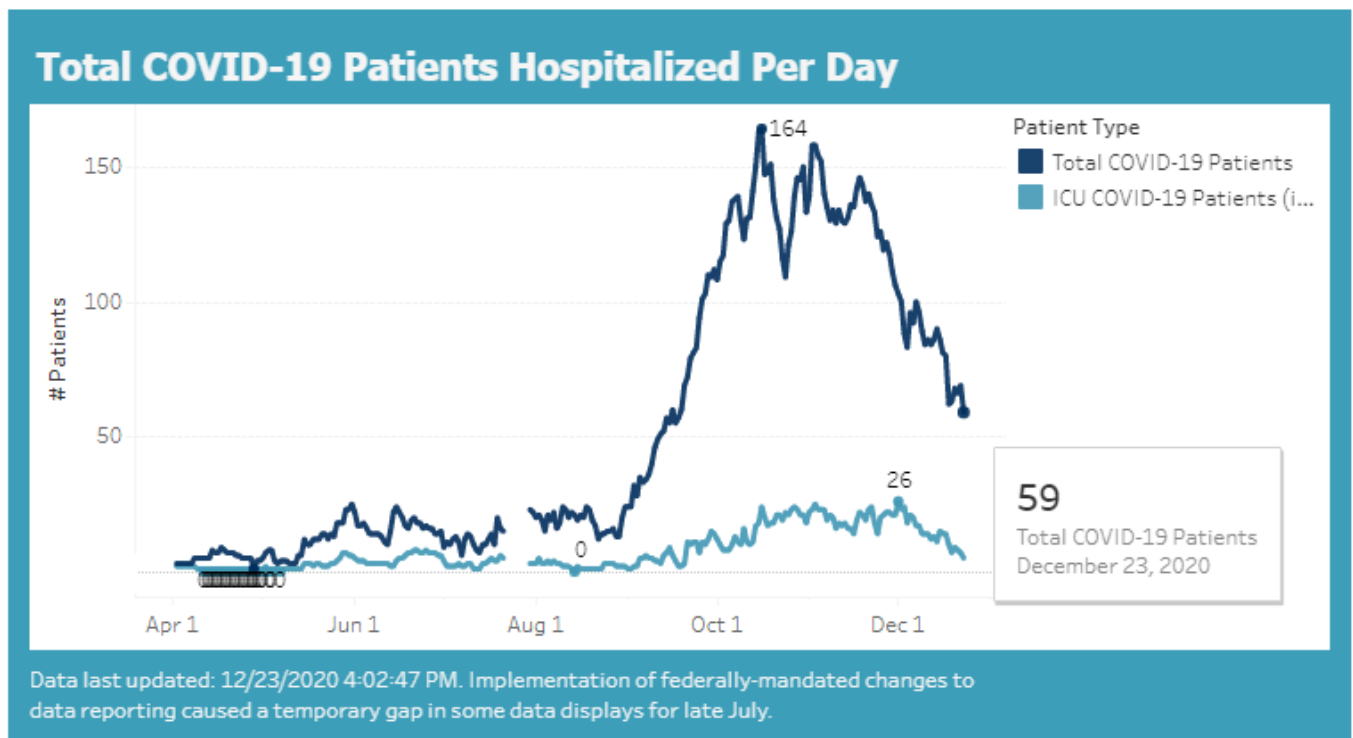
## Healthcare Measures for the Fox Valley Area

The Fox Valley Area HERC Region includes Calumet, Green Lake, Menominee, Outagamie, Shawano, Waupaca, Waushara and Winnebago Counties.

It is vital that healthcare systems have adequate capacity to manage patient care in the context of a surge caused by COVID-19. Through adequate testing, case identification and investigation we can help keep case counts at levels that are manageable by our healthcare systems. When healthcare systems exceed their capacity, the ability to treat severe illness is compromised and patients do worse and/or do not get the care they need to survive the illness.

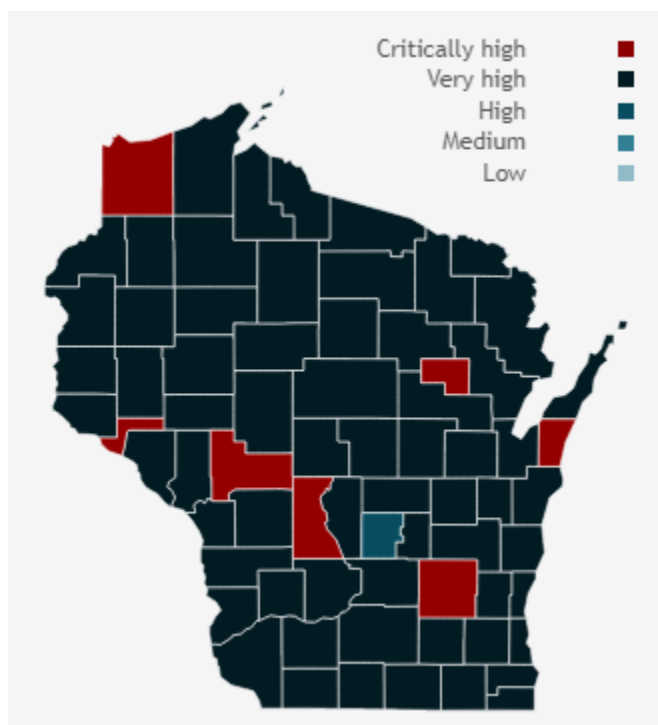
COVID-19 hospitalizations continue to remain high across the state. As of 12/23/2020, there were **59 COVID-19 patients hospitalized** in the Fox Valley Area hospitals with 5 of those patients in the ICU.

To view more information on healthcare measures in the Fox Valley Area and across the state, please visit <https://www.wha.org/COVID19Update> & <https://www.dhs.wisconsin.gov/covid-19/hosp-data.htm>



## Burden, Trajectory, and Activity Level Across Wisconsin in Past 14 Days

Updated 12/23/2020



The Wisconsin Department of Health Services classifies regions and counties as critically high, very high, high, medium, or low activity levels for COVID-19 spread by combining the case burden (case rate) and trajectory (change in cases over time) indicators. The state updates this information weekly on Wednesdays by 5 p.m. As of December 23, 2020, Winnebago County\*\*\*\* and the Fox Valley Region are both classified as having a **very high COVID-19 activity level**.

To view more information on these metrics, please visit <https://www.dhs.wisconsin.gov/covid-19/local.htm>

Area	Case Count (Past 14 days)	Burden	Trajectory	Activity Level
Winnebago	849	501.3 Very High	-22% ▼	Very High ■
Fox Valley Area	2,919	535.2 Very High	-14% ▼	Very High ■
Outagamie	1,056	574.5 Very High	N/A ↔	Very High ■
Wisconsin	41,529	718.4 Very High	-17% ▼	Very High ■

A trajectory of N/A means there was no significant change in the percent change in cases for this week compared to the previous week.

\*\*\*\*This data is provided by the [Department of Health Services](#) and may be different than the information provided by WCHD because the state reports data for the entire county, which includes the portions of Winnebago County that fall within the jurisdiction of the [City of Menasha Health Department](#) and [City of Appleton Health Department](#).