



# Winnebago County Health Department

## COVID-19 Weekly Data Summary

November 24, 2021

Happy Thanksgiving! Take precaution with unvaccinated and elderly family members during the holiday.

### Summary

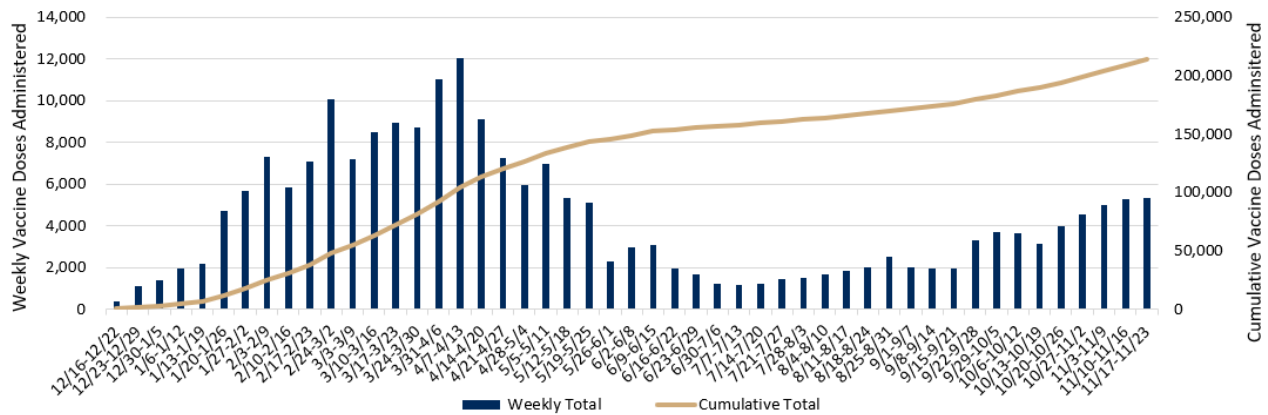
- Getting vaccinated is the best way to protect yourself and the community, especially as we move into more indoor activities and [holiday gatherings](#). If you get COVID-19, you also risk giving it to loved ones who may get very sick. [COVID-19 vaccines](#) have been proven to reduce the risk of getting the virus and also protect the people around you, particularly those at increased risk for severe illness from COVID-19.
- Data continues to show that [unvaccinated people](#) account for the vast majority of severe cases, hospitalizations and deaths from COVID-19. The risk of having a serious adverse reaction to the vaccine is very low — far lower than the risk of contracting COVID-19. Vaccines are free and do not require an ID or insurance. Visit [www.wcvaccine.org](http://www.wcvaccine.org) for info.
- The FDA and CDC authorized the use of the Pfizer COVID-19 vaccine for [children ages 5 to 11](#). The Pfizer COVID-19 vaccine requires two doses 21 days apart for full protection, and is the first and only vaccine currently available for this age group. Children and youth under 18 continue to represent the highest number of new PCR confirmed cases compared to other age groups. In the past 14 days, there were 232 PCR confirmed cases among 5- to 14-year-olds in our jurisdiction, indicating a critical burden status in this age group.
- Pfizer and Moderna booster doses are [recommended for anyone 18 and older](#) and may be given at least 6 months after their second dose. Johnson & Johnson booster doses are recommended for anyone 18 and older at least two months after their first dose. The FDA and CDC have also approved mixing and matching of vaccines, so individuals may choose a different vaccine type than they originally received if preferred. Additional doses continue to be recommended for moderately to severely immunocompromised people aged 12 and older at least 28 days after the last dose of their primary series.
- To help keep schools open, have your child wear a mask, stay home when ill, and get [tested](#) if they have symptoms or were exposed to COVID-19. If your child is ill or has been exposed to COVID-19, keep all other children in your household home too. Find answers to common questions [here](#). We currently have the highest rates of cases in children since the start of the pandemic. Act now to vaccinate.
- COVID-19 testing remains an important tool in reducing spread of the virus to others. Whether you are vaccinated or unvaccinated, protect others by getting a COVID-19 test if you have symptoms, were exposed to the virus, or feel you need a test. Even if you have no symptoms or mild symptoms, you can infect others.
  - If you were exposed to COVID-19, it's best to wait 5-7 days from exposure to get tested. If you test too early, the viral load may not be enough to show up on a test. Anyone with symptoms should get tested immediately.
  - [Sunnyview Expo Center](#) PCR test results currently take approximately 2-3 days. [Visit our website](#) for a list of testing locations in Winnebago County.
- Situational Awareness:
  - The confirmed + probable case burden is **very high** for our jurisdiction. The case rate over the past 2 weeks is **945.7** cases per 100,000 people, **an increase of 7%** from the 833.9 cases per 100,000 reported last week.
  - Over the past two weeks, we have reported a total of 1,454 confirmed + probable cases.
  - There are at least 627 PCR tests performed every day in our jurisdiction.
  - Over the past two weeks, 13.1% of PCR tests were positive in our jurisdiction. This rate indicates that more testing after exposure is needed. It's important that those infected let their contacts know to get tested.
  - There are currently 111 [COVID-19 patients hospitalized](#) in Fox Valley Area hospitals.
  - 62.1% of Winnebago County residents aged 5 or older have received at least one COVID-19 vaccine dose.
- Only the *highest risk close contacts* are being contacted directly by public health – we are asking [people that test positive](#) for COVID-19 to [reach out to all close contacts](#) themselves.
- Vaccines are available any day of the week. Visit [www.wcvaccine.org](http://www.wcvaccine.org) to find answers to your vaccine questions and find a vaccination site near you. Check with [vaccine locations](#) ahead of time if you want a specific vaccine brand.

## COVID-19 Vaccination Data

As of 11/24/2021, **6,468,465 doses** of the [COVID-19 vaccine](#) have been administered to Wisconsin residents with 58.8% of the Wisconsin population having received at least one dose of the COVID-19 vaccine and 55.9% of the Wisconsin population have completed the vaccine series.

As of 11/24/2021, **214,109 doses** of [COVID-19 vaccine](#) have been administered to Winnebago County residents with 58.6% of the county population having received at least one dose of the COVID-19 vaccine and 55.7% of the county population have completed the vaccine series. Of Winnebago County residents aged 5 or older, 62.1% have received at least one dose of the COVID-19 vaccine. Since August 12, 2021, over 26,000 3<sup>rd</sup> doses/booster doses have been administered to Winnebago County residents. Since November 7, 2021 over 1,900 first doses have been administered to children ages 5 to 11.

Cumulative and Weekly Number of COVID-19 Vaccine Doses Administered to Winnebago County Residents (12/16/2020-11/23/2021)



This table shows the number and percent of Winnebago County residents who have received at least one dose of the COVID-19 vaccine by demographic breakdown. Data will differ slightly from what is posted on the [DHS website](#) due to differences in population estimates used and because the data is extracted at a different time of day.

|           |   | Number | Percent      | Population* |           | Number  | Percent | Population*  |        |
|-----------|---|--------|--------------|-------------|-----------|---------|---------|--------------|--------|
| Ethnicity | Hispanic or Latino                        | 3,296  | 47.0%        | 7,017       | Sex       | Female  | 52,988  | 62.7%        | 84,556 |
|           | Not Hispanic or Latino                    | 93,998 | 57.5%        | 163,394     |           | Male    | 46,741  | 54.4%        | 85,855 |
|           | Unknown                                   | 2,643  |              |             |           | Unknown | 208     |              |        |
| Race      | American Indian or Alaska Native          | 554    | 54.9%        | 1,010       | Age Group | 12-15   | 4,058   | 50.9%        | 7,974  |
|           | Asian                                     | 3,084  | 65.0%        | 4,748       |           | 16-17   | 2,212   | 53.9%        | 4,103  |
|           | Black or African-American                 | 1,504  | <b>38.8%</b> | 3,874       |           | 18-24   | 8,079   | <b>39.4%</b> | 20,491 |
|           | Native Hawaiian or Other Pacific Islander | 123    | 95.3%        | 129         |           | 25-34   | 12,638  | 56.3%        | 22,442 |
|           | Other Race                                | 8,383  | 99.9%**      | 4,291       |           | 35-44   | 13,602  | 67.5%        | 20,144 |
|           | White                                     | 83,304 | 53.3%        | 156,359     |           | 45-54   | 14,014  | 62.6%        | 22,390 |
|           | Unknown                                   | 2,985  |              |             |           | 55-64   | 17,903  | 78.4%        | 22,846 |
|           |   |        |              |             |           | 65-74   | 15,078  | 99.9%**      | 15,050 |
|           |   |        |              | 75+         | 10,423    | 87.1%   | 11,964  |              |        |
|           |   |        |              | 12+         | 98,008    | 66.5%   | 147,404 |              |        |

\*Age Group Population Data comes from the [2019 census](#). Population sizes used in this table are for all of Winnebago County, not just the jurisdiction of Winnebago County Health Department. Population sizes will differ from population sizes used elsewhere in these reports.

\*\* The metric for percent of population vaccinated has been capped at 99.9%. These metrics could be greater than 99.9% for multiple reasons, such as census denominator data not including all individuals that currently reside in the jurisdiction, differences in racial category classification, etc.

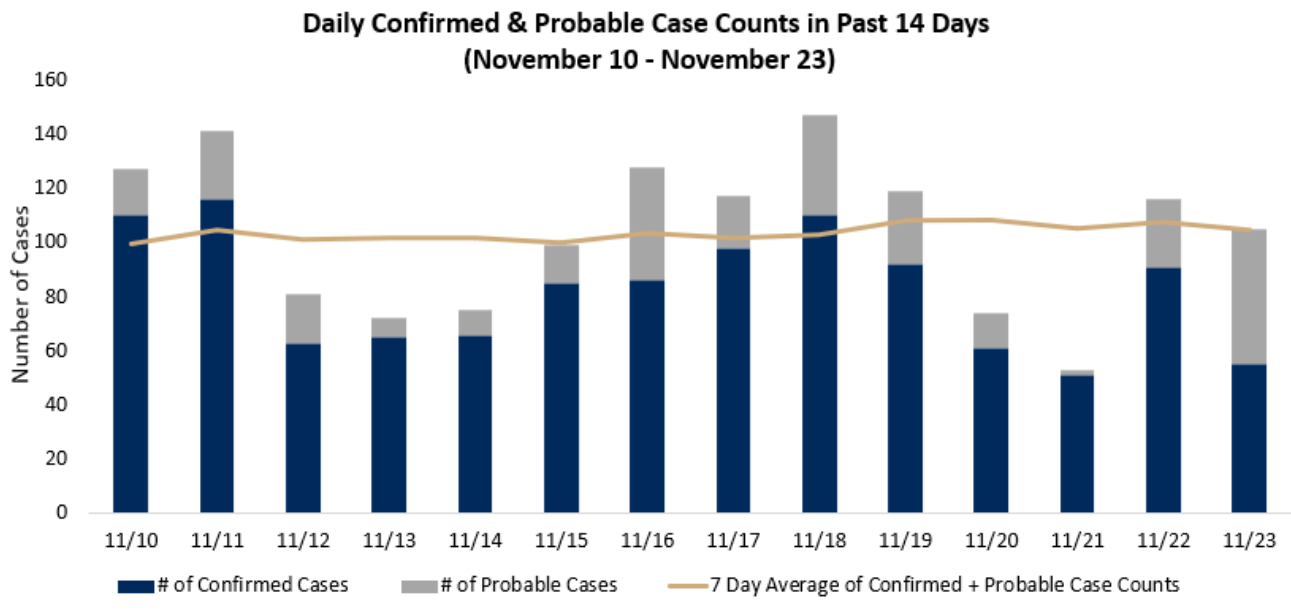
## Reported Case Counts

|                              | Case Counts for the Past 14 Days<br>11/10/2021-11/23/2021 | Cumulative Case Counts<br>3/9/2020-11/24/2021 |
|------------------------------|---|---|
| <b>Confirmed Cases</b>       | 1,149   | 21,852  |
| <b>Active Cases</b>          |   | 1,043 (5% of cumulative cases)                |
| <b>Recovered Cases</b>       |   | 20,596 (94% of cumulative cases)              |
| <b>Probable Cases</b>        | 305   | 4,367   |
| <b>Negative Cases</b>        | 2,025   | 112,206                                       |
| <b>Deaths**</b>              | <b>5</b>  | 243   |
| <b>Among Confirmed Cases</b> | 5   | 213   |
| <b>Among Probable Cases</b>  | 0   | 30  |

\*\*Death certificate must list COVID-19 (or the virus causing COVID-19) as a cause of death or a significant condition contributing to death. Healthcare providers and/or coroner determines cause of death. Data includes COVID deaths among PCR confirmed cases and probable cases.

## Case Count by Day – Last 2 Weeks

When there is adequate testing in place, trending daily case counts show if the disease is spreading or shrinking and the overall burden of disease in our area. This graph shows the number of confirmed cases by test result date and probable cases by the date their case file was created. **There was an average of 103.9 confirmed and probable cases per day, which is an increase from the 96.4 confirmed and probable cases per day reported last week. Total daily confirmed and probable case counts ranged from 53 to 147 cases.** There was an average of 82.1 confirmed cases per day, which is an increase from the 78.9 cases per day reported last week. There was an average of 21.8 probable cases per day, which is an increase from the 17.5 probable cases per day reported last week. The trend line shows the 7-day average for the combined total of confirmed and probable cases. For a full disease curve, see the [dashboard](#) on our [website](#).



Daily confirmed case counts presented here may differ from our situation update and the cases by day graph reported on our dashboard. This chart reflects the test result date instead of the date when the results are actually received by the health department.

A person is counted as a confirmed COVID-19 case if they had a positive test result using a confirmatory diagnostic test that detects the genetic material of SARS-CoV-2, the virus that causes COVID-19 (polymerase chain reaction (PCR) tests or nucleic acid amplification tests (NAT)). Reasons a person could be counted as a probable case include: a positive antigen test or diagnosis due to symptoms and known exposure to COVID-19.

## Burden Status

Burden status is the total number of reported cases per 100,000 residents in the last two weeks.

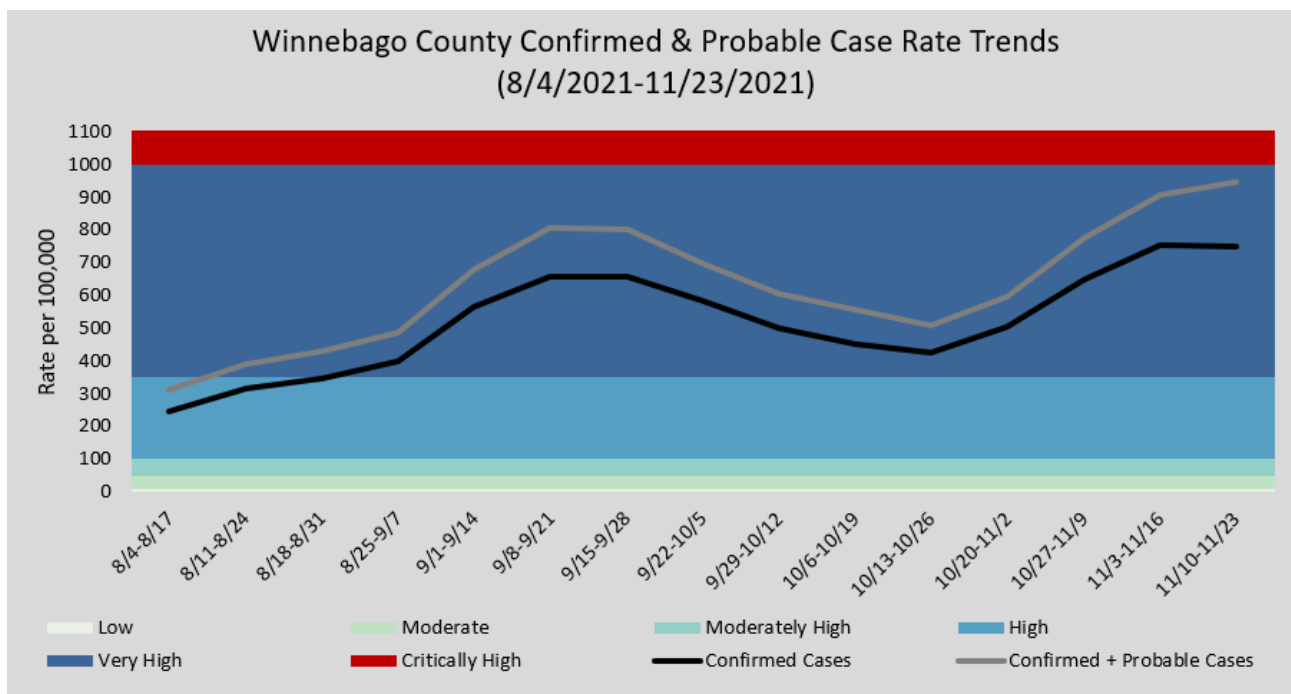
| Dates   | Confirmed Cases | Probable Cases | Total (Confirmed + Probable) |
|---|-----------------|----------------|------------------------------|
| 11/10-11/16   | 591             | 132            | 723                          |
| 11/17-11/23   | 558             | 173            | 731                          |
| Total for last two weeks                                      | 1,149           | 305            | 1,454                        |
| <b>Case rates for last two weeks (per 100,000 population)</b> | <b>747.3</b>    | <b>198.4</b>   | <b>945.7</b>                 |

| Burden Status          | Case Rate per 100,000 residents in the past two weeks           | Number of Cases in the past two weeks   |
|------------------------|---|---|
| <b>Low</b>             | Case rate is less than or equal to 10.                          | Less than 15 cases or about 1 case per day.   |
| <b>Moderate</b>        | Case rate is greater than 10, but less than or equal to 50.     | Greater than 15 cases, but less than or equal to 77 cases or less than 6 cases per day. |
| <b>Moderately High</b> | Case rate is greater than 50, but less than or equal to 100.    | Greater than 77 cases, but less than or equal to 154 cases.                             |
| <b>High</b>            | Case rate is greater than 100, but less than or equal to 350.   | Greater than 154 cases, but less than or equal to 538 cases.                            |
| <b>Very High</b>       | Case rate is greater than 350, but less than or equal to 1,000. | Greater than 538 cases, but less than or equal to 1,537 cases.                          |
| <b>Critically High</b> | Case rate is greater than 1,000.                                | Greater than 1,537 cases.   |

Case rate is determined by number of new confirmed cases in a particular group (such as an age group) during the past two weeks, divided by the population of that particular group, multiplied by 100,000. View the [DHS COVID Local Activity Level](#) page to learn more about burden status.

## Biweekly Confirmed & Probable Case Rate Trends

The graphs below show confirmed case rate per 100,000 people and the confirmed + probable case rate per 100,000 people for the Winnebago County Health Department Jurisdiction. These case rates are based on confirmed and probable case counts during a two-week time span.

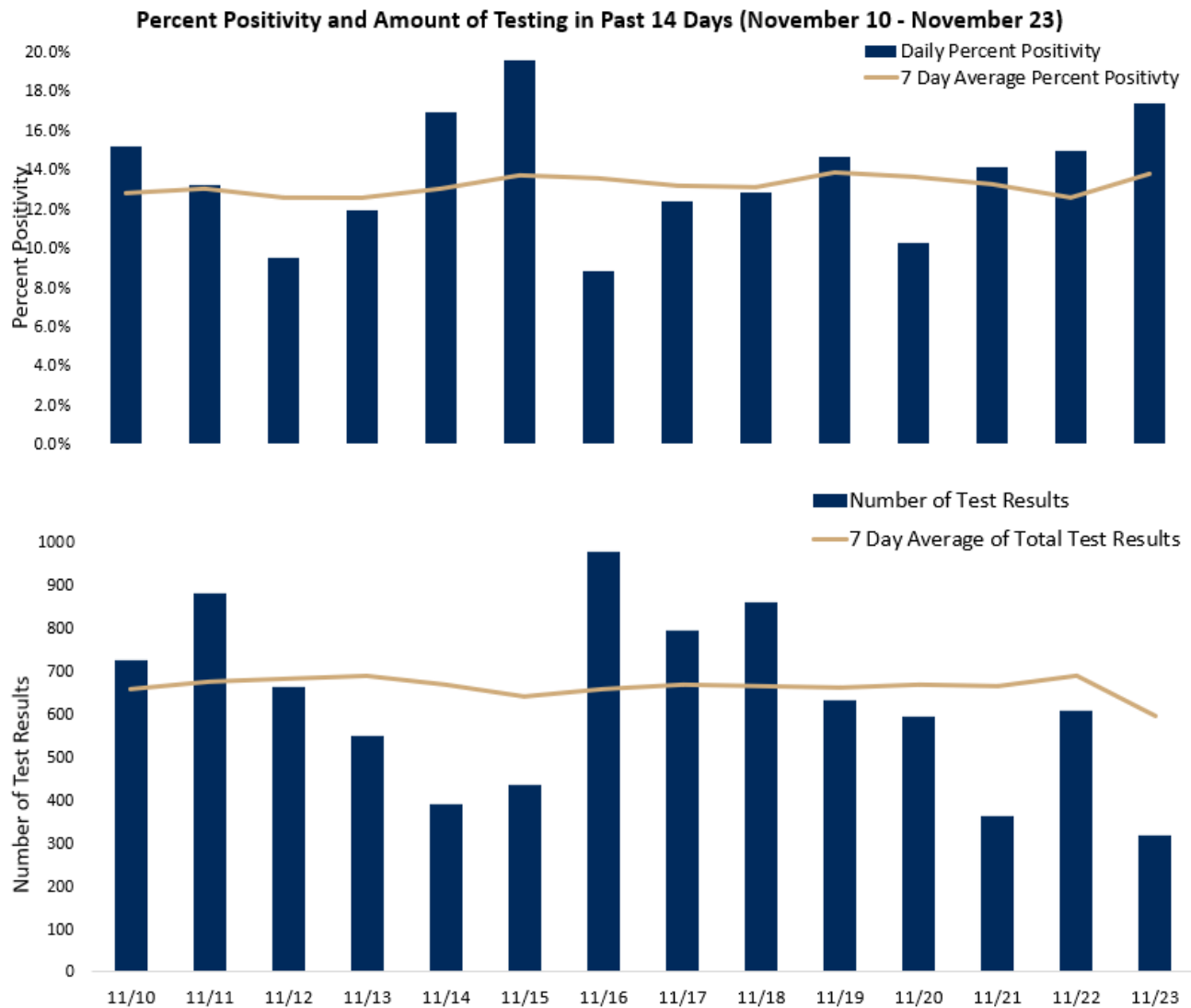


## Amount of Testing and Percent Positivity

Adequate testing capacity and utilization are necessary for identification of active infections of COVID-19, and investigations into those positive cases helps prevent the spread of the virus. Higher disease activity requires more testing to identify and isolate enough infected people to slow the spread. The percent positivity helps determine if there is adequate testing. A high percent positivity may indicate an inadequate amount of testing, which limits the number of identified cases and subsequent contact tracing used to help reduce the spread of the virus. Our current goal is to have enough testing to keep the percent positivity below 5%. View the [DHS COVID Local Activity Level](#) page to see percent positivity for the state, counties, and regions.

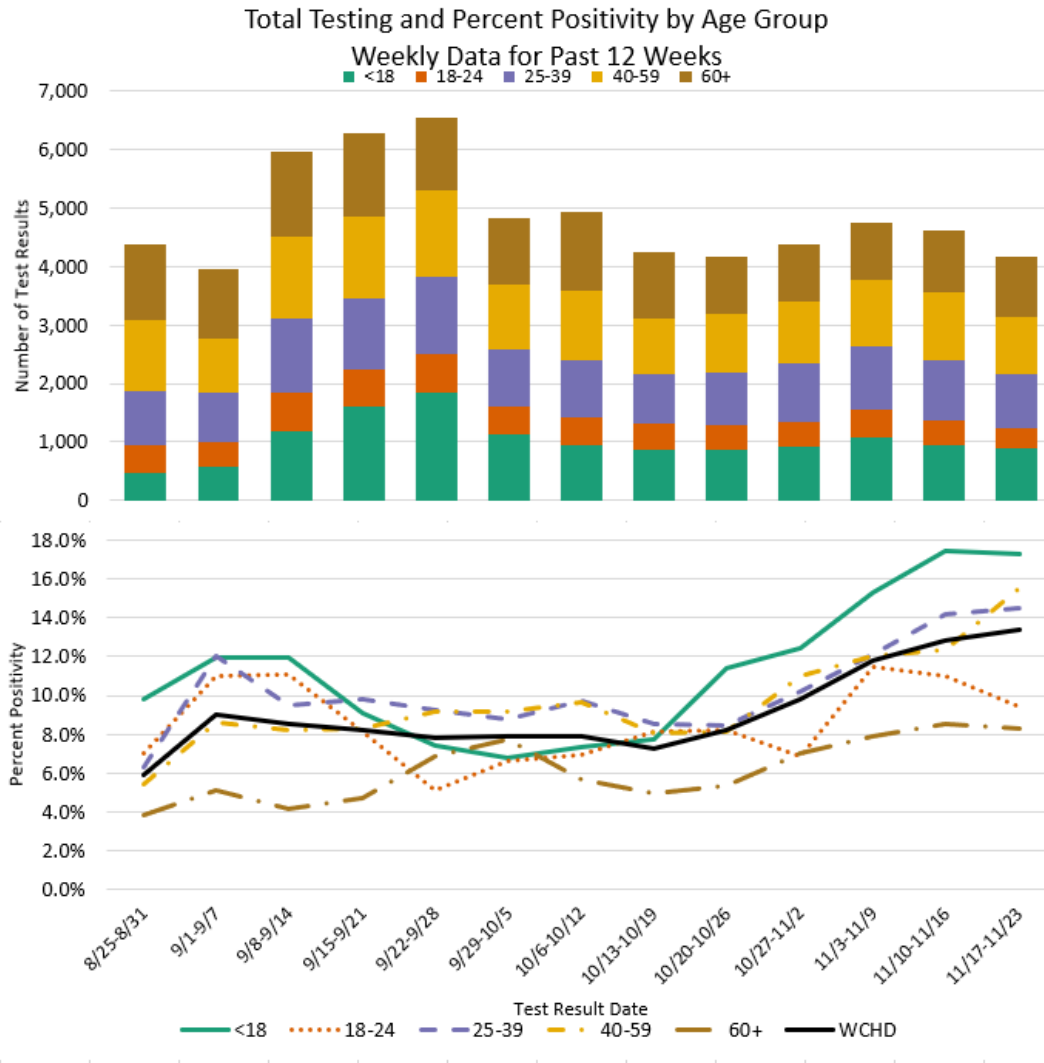
Over the past two weeks, **13.1% of PCR tests were positive**, which is an increase from the 12.1% positivity reported last week. Daily positivity ranged from 8.8% to 19.5%. Over the past two weeks an **average of 627 PCR tests** were conducted each day among residents within the Winnebago County Health Department jurisdiction. Antigen tests are not included in the testing numbers or the percent positivity calculation.

[Testing](#) is available at the [regional COVID-19 testing site](#) at Sunnyview Expo Center in Oshkosh as well as other locations including [CVS pharmacies](#) and community test sites in [Menasha](#) and [Appleton](#).



## Amount of Testing and Percent Positivity by Age Group

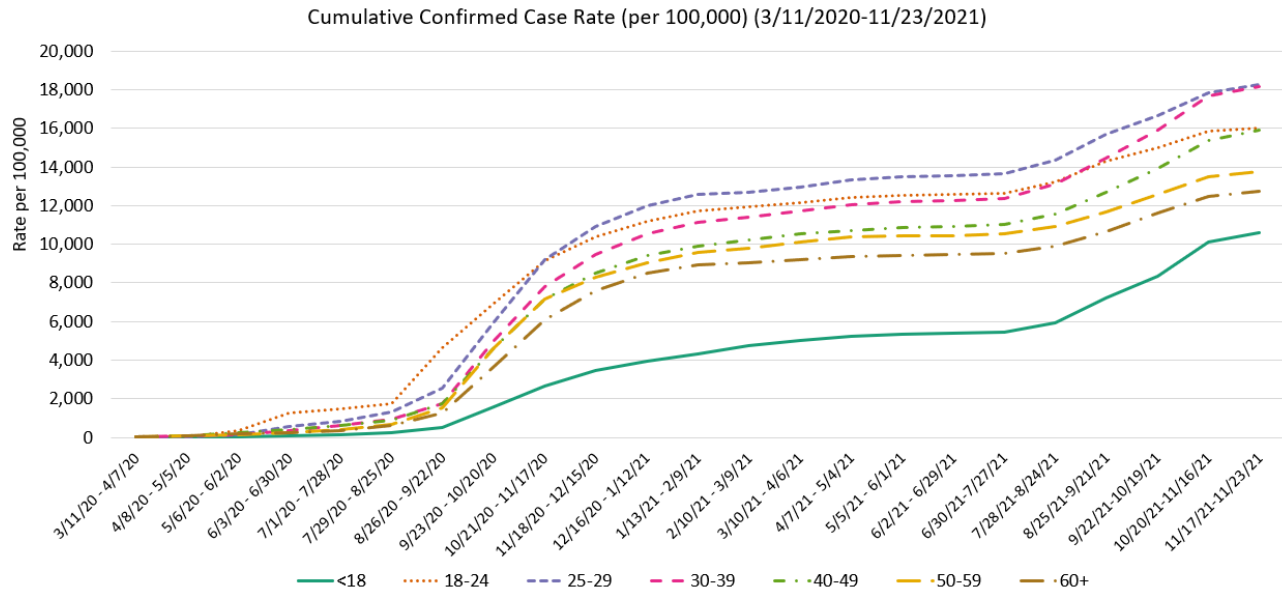
The figures below show the percent positivity and total testing numbers by age group. Antigen tests are not included in the testing numbers or the percent positivity calculation. A PCR confirmed case is only counted once in the percent positivity calculation, meaning a person with multiple positive PCR tests only counts as one confirmed case. Over the past week, individuals aged <18 had a 17.3% positivity rate. Over the past week, **13.4% of PCR tests were positive** in our jurisdiction, which is an increase from the 12.4% positivity reported for the previous week (11/10-11/16).



| 11/17-11/23                          | <18    | 18-24  | 25-39  | 40-59  | 60+    | Total   |
|--------------------------------------|--------|--------|--------|--------|--------|---------|
| Percent Positivity                   | 17.3%  | 9.4%   | 14.5%  | 15.6%  | 8.3%   | 13.4%   |
| Testing Rates per 100,000 population | 2,865  | 1,842  | 3,136  | 2,407  | 3,124  | 2,721   |
| Number of Tests                      | 886    | 352    | 922    | 989    | 1,011  | 4,160   |
| Population                           | 30,928 | 19,108 | 29,405 | 41,095 | 32,359 | 152,895 |

## Trending by Age Group

This graph shows how cumulative confirmed case rates by age group have changed over time. Cumulative case rates will always trend upward; it is the rate of increase in that trend that helps us understand what populations are being impacted the most.



This table shows the case count and case rate by age group for the past two weeks and cumulatively.

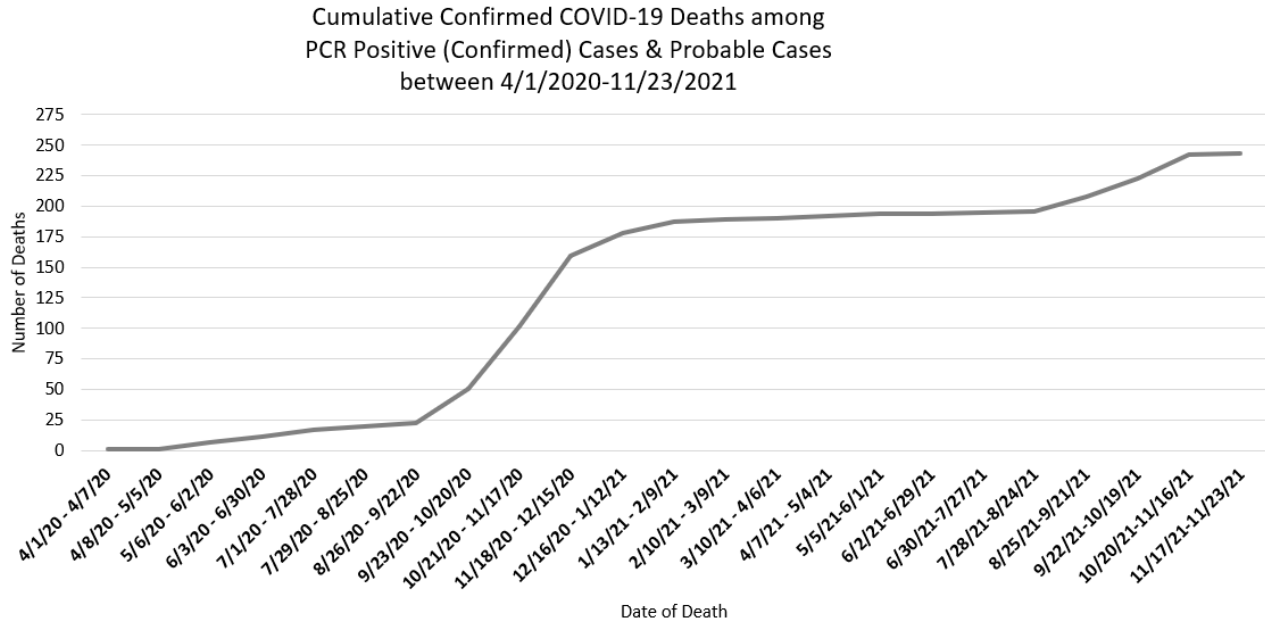
| Age Group | Past Two Weeks (11/10/21-11/23/21) |                         | Cumulative PCR Confirmed Case Count | Population*** |
|-----------|------------------------------------|-------------------------|-------------------------------------|---------------|
|           | PCR Confirmed Case Count           | Case Rate (per 100,000) |                                     |               |
| <5        | 52                                 | 627.0                   | 471                                 | 8,293         |
| 5-9       | 127                                | 1,538.3                 | 953                                 | 8,256         |
| 10-14     | 105                                | 1,174.0                 | 1,050                               | 8,944         |
| 15-17     | 35                                 | 644.0                   | 802                                 | 5,435         |
| 18-24     | 79                                 | 413.4                   | 3,060                               | 19,108        |
| 25-29     | 86                                 | 848.8                   | 1,850                               | 10,132        |
| 30-39     | 195                                | 1,011.8                 | 3,496                               | 19,273        |
| 40-49     | 171                                | 936.0                   | 2,903                               | 18,269        |
| 50-59     | 124                                | 543.2                   | 3,138                               | 22,826        |
| 60+       | 175                                | 540.8                   | 4,124                               | 32,359        |

\*\*\*Age Group Population Data comes from the [2018 census](#). Total Population size across all age groups (152,895) differs slightly from total population size used to calculate Winnebago County Health Department jurisdiction case rate (153,748) which was determined using 2020 population data from the [WI Department of Administration](#).

## Confirmed COVID-19 Deaths

Confirmed COVID-19 deaths include deaths among PCR confirmed cases and probable cases. Confirmed COVID-19 deaths have a death certificate that lists COVID-19 disease or SARS-CoV-2 as a cause of death or a significant condition contributing to death. Healthcare providers or medical examiners/coroners determine cause of death. Public reporting of COVID-19 deaths lag while waiting for confirmation.

In the graph below, the data for recent weeks is preliminary and subject to change. Recent deaths are still pending as we await confirmation on cause of death.



These tables show case counts for confirmed COVID-19 deaths by age group and housing type, as well as by ethnicity, race, and sex.

| All Confirmed COVID-19 Deaths by Age Group and Housing Type |            |             |              |                  |                |
|---|------------|-------------|--------------|------------------|----------------|
| Age Group   | Not Group  | LTCF/ Group | Total Deaths | Rate per 100,000 | Population     |
| <50   | 10         | 1           | 11           | 11.3             | 97,710         |
| 50-59   | 24         | 1           | 25           | 109.5            | 22,826         |
| 60-69   | 32         | 8           | 40           | 242.6            | 16,491         |
| 70-79   | 36         | 16          | 52           | 542.0            | 9,594          |
| 80-89   | 41         | 33          | 74           | 1,833.0          | 6,274          |
| 90+   | 12         | 29          | 41           |                  |                |
| <b>Total</b>  | <b>155</b> | <b>88</b>   | <b>243</b>   | <b>158.9</b>     | <b>152,895</b> |

| All Confirmed COVID-19 Deaths by Ethnicity, Race, and Sex |                            |     |
|---|----------------------------|-----|
| Ethnicity   | Hispanic/Latino or Unknown | 21  |
|   | Not Hispanic/Latino        | 222 |
| Race  | Other or Unknown           | 20  |
|   | White                      | 223 |
| Sex   | Female                     | 101 |
|   | Male                       | 142 |

**Long-term care facility (LTCF):** nursing homes, assisted living facilities

**Group housing facility:** Group housing facilities include city and county jails, homeless shelters, dormitories and group homes. Deaths among those living in Wisconsin Department of Corrections facilities (including Oshkosh Correctional Institute) are not included here.

**Not group housing facility:** single family homes, apartments, condos, duplexes or townhouses



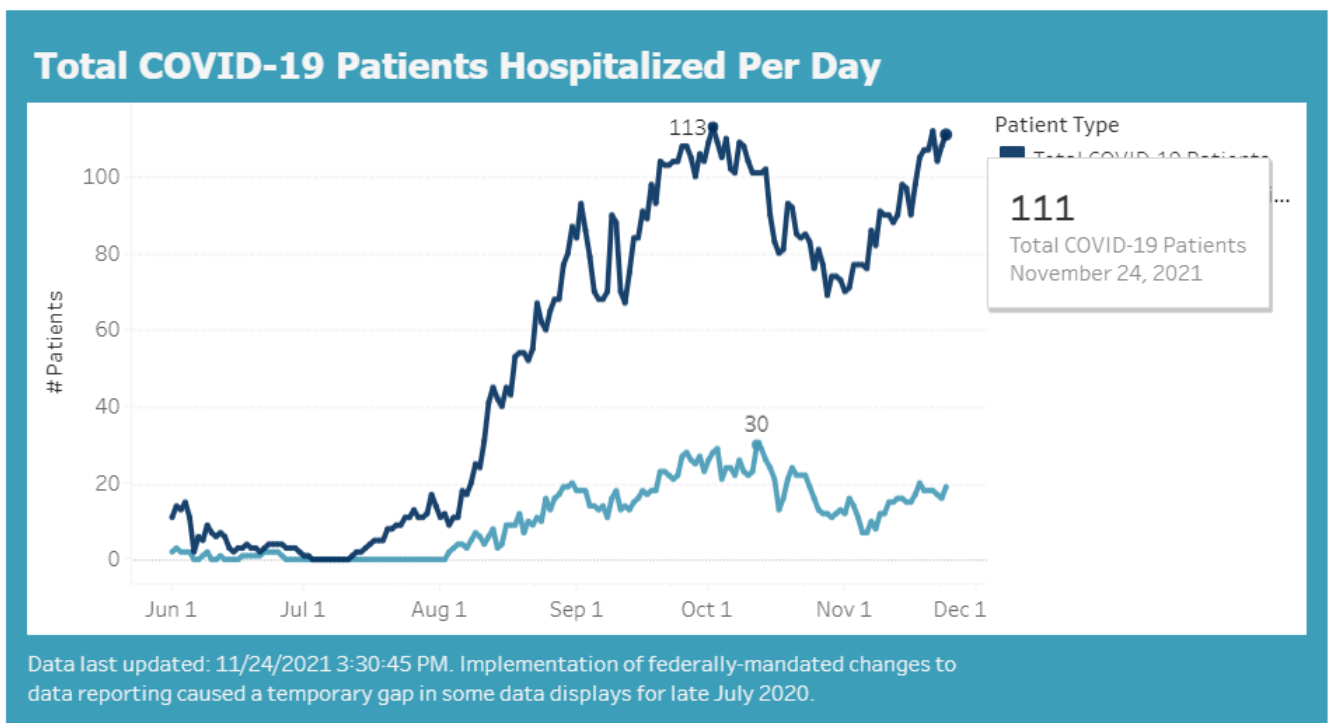
## Healthcare Measures for the Fox Valley Area

The Fox Valley Area HERC Region includes Calumet, Green Lake, Menominee, Outagamie, Shawano, Waupaca, Waushara and Winnebago Counties.

It is vital that healthcare systems have adequate capacity to manage patient care in the context of a surge caused by COVID-19. Through adequate testing, case identification and investigation we can help keep case counts at levels that are manageable by our healthcare systems. When healthcare systems exceed their capacity, the ability to treat severe illness is compromised and patients do worse and/or do not get the care they need to survive the illness.

As of 11/24/2021, there were **111 COVID-19 patients hospitalized** in the Fox Valley Area hospitals with 19 of those patients in the ICU.

To view more information on healthcare measures in the Fox Valley Area and across the state, please visit <https://www.wha.org/COVID19Update> and <https://www.dhs.wisconsin.gov/covid-19/hosp-data.htm>



## Burden, Trajectory, and Activity Level Across Wisconsin in Past 14 Days

Updated 11/24/2021

**At the time this summary was published, the DHS Disease Activity dashboard was not fully updated. Please visit the [DHS dashboard](#) to check for updated information.**

The Wisconsin Department of Health Services classifies regions and counties as critically high, very high, high, medium, or low activity levels for COVID-19 spread by combining the case burden (case rate) and trajectory (change in cases over time) indicators. The state updates this information weekly on Wednesdays by 5 p.m. As of November 24, 2021, Winnebago County\*\*\*\* was classified as having a **very high COVID-19 activity level** and the Fox Valley Region was classified as having a **critically high COVID-19 activity level**.

To view more information on these metrics, please visit <https://www.dhs.wisconsin.gov/covid-19/local.htm>

| Area            | Confirmed + Probable Case Count (Past 14 days) | Burden               | Trajectory | Activity Level    | Percent Positive (Past 7 Days) |
|-----------------|--|----------------------|------------|-------------------|--------------------------------|
| Winnebago       |  | 996 Very High        | N/A ↔      | Very High ■       | 10.9%                          |
| Fox Valley Area |  | 1017 Critically High | 11% ▲      | Critically High ■ | 11.8%                          |
| Outagamie       |  | 1085 Critically High | N/A ↔      | Critically High ■ | 12.1%                          |
| Wisconsin       |  |                      |            |                   | 12.0%                          |

A trajectory of N/A means there was no significant change in the percent change in cases for this week compared to the previous week.

\*\*\*\*This data is provided by the [Department of Health Services](#) and may be different than the information provided by WCHD because the state reports data for the entire county, which includes the portions of Winnebago County that fall within the jurisdiction of the [City of Menasha Health Department](#) and [City of Appleton Health Department](#).

## Background Information

This report provides *preliminary* data on confirmed COVID-19 cases from November 10, 2021 – November 23, 2021. A person is counted as a **confirmed** COVID-19 case if they had a positive confirmatory laboratory test (for example, polymerase chain reaction (PCR) tests or nucleic acid amplification tests (NAAT) that detect genetic material of SARS-CoV-2, the virus that causes COVID-19). Antigen positive tests are counted as **probable** cases.

Dates utilized for all graphs and tables are based on test result date and may not represent final reported case counts. Data may be underreported for recent days because results can take multiple days to be reported to the health department. This means the number of tests and percent positivity may change in next week's report. As this is a weekly report for the past 14 days, there will always be a week of overlap between reports.

\*The COVID-19 data provided in this report is specific to the Winnebago County Health Department (WCHD) jurisdiction (population: 153,748). It does not include the portions of Winnebago County that fall within the jurisdiction of the [City of Menasha Health Department](#) and [City of Appleton Health Department](#). As of October 3, 2020, data reports from the Winnebago County Health Department do not include test results from residents in Wisconsin Department of Corrections facilities, which includes the Oshkosh Correctional Institute. This data can be found on the Wisconsin Department of Corrections [website](#).

Data provided on the [Department of Health Services website](#) may be different than information provided by WCHD because the state reports data for the entire county based on address, which includes those portions of Menasha and Appleton as well as the correctional facilities.

### For additional Winnebago County Health Department COVID-19 information:

- [WCHD COVID-19 Webpage](#)
- [Municipality Weekly Data Summaries](#)
- [School District Weekly Data Summaries](#)
- [Trend Data Graphs](#)