

AMENDED

WINNEBAGO COUNTY BOARD OF SUPERVISORS TUESDAY, SEPTEMBER 20, 2016

There will be an Adjourned Meeting of the Winnebago County Board of Supervisors on Tuesday, September 20, 2016, at 6:00 p.m., in the Supervisors' Room, Fourth Floor, Winnebago County Courthouse, 415 Jackson Street, Oshkosh, Wisconsin. At this meeting, the following will be presented to the Board for its consideration:

- Roll Call
- Pledge of Allegiance
- Invocation
- Adopt agenda
- ***Time will be allowed for persons present to express their opinion on any resolution or ordinance that appears on the agenda.***
- Communications, petitions, etc.
 - Notice of Claim:
 - Notice of Claim from Karen Hottinger for damage to her car caused by a buckle in the road on Highway 45.
 - Notice of Claim from Patrick Hansen for tar removal from his vehicle caused by a road construction project located on Highway 45.
 - Notice of Claim from David G. Madell, Jr. for damage to his car's windshield caused by a Winnebago County dump truck.
 - Notice of Claim from Brian Hooey for damage to his car's windshield caused by loose blacktop while traveling south on Highway 45 toward Oshkosh.
 - Notice of Claim from Mark Kaufmann requesting reimbursement for a vehicle rental charge due to an accident with a Land and Water vehicle.
 - Zoning Petitions:
 - No. 001 – Oshkosh Realty Corp, Town of Nekimi; tax parcel no. 012-0319-03(p); rezone from A-2 to R1.
 - No. 002 – Michael S. Yingling, Town of Wolf River; tax parcel no. 032-0730-19; rezone from R-1 with wetlands to R-1 without wetlands
 - Resolutions from other counties:
 - Richland County – Resolution No. 16-114 – regarding their opposition to the UW-Cooperative Extension Reorganization Plan
- Reports from Committees, Commissions & Boards
- Approval of the proceedings from the August 16, 2016 meeting
- County Executive's Report
- County Executive's Appointments
 - Aging and Disability Resource Center (ADRC) – Deb Hogue, Donna Lohry, County Board Supervisor Harold Singstock and Claire Steger
 - Mississippi Valley Health Services Commission and the Marsh County Health Alliance – Supervisor Mike Norton
- County Board Chairman's Report
- Presentation of 2016 Wisconsin Key Award by Kayla Oberstadt, 4-H Youth Development Educator, to recipients:
 - Stephany Beck
 - T.J. Beck
 - Julia Behm
 - Casey Buehler
- Explanation Committee Quorums by John Bodnar, Corporation Counsel
- **Presentation on CTH CB and Oakridge Road Intersection – Ernest Winters, Winnebago County Highway Commissioner**

ZONING REPORTS & ORDINANCES

Report No. 001 – Peter G. & Cindy Weyenberg, Town of Neenah

Amendatory Ordinance No. 09/01/16– Rezoning from A-2 to R-1 for tax parcel no. 010-0088-04(p)

Report No. 002 – Craig L. & Pamela J. Kuepper, Town of Wolf River

Amendatory Ordinance No. 09/02/16 – Rezoning from R-1 Rural Residential to R-1 Rural Residential without wetlands for tax parcel no. 032-0730-16

RESOLUTIONS AND ORDINANCES

RESOLUTION NO. 049-92016: Authorize Two-Year Contract with US Cellular (Wireless Service)
Submitted by:
INFORMATION SYSTEMS COMMITTEE
PERSONNEL & FINANCE COMMITTEE

RESOLUTION NO. 050-92016: Appropriate \$4,200,000 to a Capital Project to Reconstruct CTH A from Indian Point Road North to CTH GG in the Town of Vinland
Submitted by:
HIGHWAY COMMITTEE
PERSONNEL & FINANCE COMMITTEE

RESOLUTION NO. 051-92016: Authorize the Office of Corporation Counsel for Winnebago County to Represent the City of Neenah Police Commission in Reciprocity for the City Attorney for the City of Neenah Representing Winnebago County's Grievance Review Board
Submitted by:
JUDICIARY AND PUBLIC SAFETY COMMITTEE

RESOLUTION NO. 052-92016: Support Increased Funding in the Children and Family Aids Allocation
Submitted by:
HUMAN SERVICES BOARD

RESOLUTION NO. 053-92016: Direct Chancellor Sandeen and the UW Extension Administration to Re-Examine the Proposed nEXT Generation Model and the Multi-County Unit that Includes Winnebago County to Determine its Impact on Programming and Outreach
Submitted by:
UW EDUCATION, EXTENSION AND AGRICULTURE COMMITTEE

RESOLUTION NO. 054-92016: Request the Winnebago County Executive to Offer the Original 2016 Contract Renewal to Impact Motorsports, LLC
Submitted by:
PAUL EISEN, DISTRICT 4
WINNEBAGO COUNTY BOARD SUPERVISOR

ORDINANCE NO. 055-92016: Repeal and Recreate Chapter 27 of the General Code of Winnebago County Entitled, "Shoreland Zoning Code"
Submitted by:
PLANNING & ZONING COMMITTEE

ORDINANCE NO. 056-92016: Amend Section 5.05 of General Code of Winnebago County: Fees of Sheriff (Fees for Civil Process and Travel-Related Costs)
Submitted by:
JUDICIARY & PUBLIC SAFETY COMMITTEE

Respectfully submitted,
Susan T. Ertmer
Winnebago County Clerk

Upon request, provisions will be made for people with disabilities.
(Times provided are estimates. Any item on the agenda may be taken up by the Board after 6:00 P.M.)

**PROCEEDINGS OF THE
WINNEBAGO COUNTY BOARD OF
SUPERVISORS**

**ADJOURNED SESSION
August 16, 2016**

**Winnebago County Courthouse
415 Jackson Street
Oshkosh, Wisconsin**

Printed by authority of the Winnebago County Board
David W. Albrecht, Chairman Susan T. Ertmer, Clerk

**WINNEBAGO COUNTY BOARD MEETING
TUESDAY, AUGUST 16, 2016**

Chairman David Albrecht called the meeting to order at 6:00 p.m. in the County Board Room, Fourth Floor, Courthouse, 415 Jackson Street, Oshkosh, Wisconsin.

The meeting was opened with the Pledge of Allegiance and an invocation by Supervisor Locke.

The following Supervisors were present: Konetzke, Barker, Harpt, Eisen, Ramos, Blank, Roh, Smith, Long, Scherck, Albrecht, Gabert, Binder, Thompson, Olson, Wojciechowski, Gordon, Wingren, Lautenschlager, Norton, Warnke, Robl, Singstock, Brooks, Powers, Locke, Hegg, Finch, Youngquist, Farrey, Rasmussen, Keller, Egan, Ellis, Snider and Kriescher.

Motion by Supervisor Robl and seconded by Supervisor Snider to adopt the agenda with one exception, Resolution #047-82016 will be brought forward before Resolution #043-82016. CARRIED BY VOICE VOTE.

PUBLIC HEARING

The following person spoke in regard to Zoning Petition No. 4 regarding the County Shoreland Zoning Code:

- Jim Erdman, 2492 Hickory Lane, Oshkosh – Chairman, Town of Oshkosh

The following persons spoke in favor of the Oshkosh Speed Zone Raceway:

- Sue Lloyd, 1729 Delaware Street, Oshkosh
- John Doemel, Owner of Glass Nickel Pizza Restaurant
- John Wallace, Winneconne, WI
- Clayton Wellman, 210 N. Westfield, Oshkosh
- Patricia Diener, 1316 Broad Street, Oshkosh
- Kenny Richards, Montello, WI
- Tammy Hackett, 349 Bowen Street, Oshkosh
- Alexandra and Lillian Doemel, Oshkosh
- Larry Richards, Montello, WI
- Jeff Lechnir, 307 Libbey Avenue, Oshkosh
- Dawn Ashcraft, 2151 Harrison Avenue, Omro
- Scott McMahon, 713 Kensington Road, Neenah
- Anne and Maggie Doemel, Oshkosh
- Dan Knaus, Business Owner
- Jeff Lemiesz, 2230 Plymouth Street, Oshkosh
- Debbie Gross
- Kathy Dahlke, 9723 W. Pioneer Road, Mequon, WI
- Alley Lowney, 687 W. 5th Avenue, Oshkosh
- Carlie Stadler, 876 E. Black Wolf Avenue, Oshkosh
- Michelle Diener, 1316 Broad Street, Oshkosh
- Jim Kronn, Beaver Dam, WI
- Dennis Payne, 145 N. Westhaven Drive, Oshkosh

COMMUNICATIONS AND PETITIONS

The following correspondence was presented to the Board by Sue Ertmer, County Clerk:

- Thank you note from Ryan Risgaard, from the Neenah High School, for the scholarship received and for the support of his education.
- Zoning Petitions:
 - No. 001 – A zoning request from Pete Weyenberg, Town of Neenah, tax parcel no. 010-0088-04(p) to rezone from A-2 to R-1 for residential purposes was referred to the Planning and Zoning Committee.
 - No. 002 – A zoning request from Ted and Nicole Reichenberger, Town of Wolf River; tax parcel no. 032-0100-05; to rezone from B2 to I-1 for mini warehouse buildings was referred to the Planning and Zoning Committee.
 - No. 003 – A zoning request from Craig Kuepper; Town of Wolf River, tax parcel no. 032-0730-16; to rezone from R-1 with wetland overlay to R-1 without wetland overlay for a detached garage was referred to the Planning and Zoning Committee.
 - No. 004 – A petition for text amendment from Cary Rowe Winnebago County Zoning to repeal and recreate Chapter 27 of the Winnebago County Shoreland Zoning Code was referred to the Planning and Zoning Committee.

REPORTS FROM COMMITTEES, COMMISSIONS AND BOARDS

Supervisor Eisen attended the Board of Canvass of the August 9th election on Thursday, August 11th and Tuesday, August 16th. He extended gratitude to the County Clerk's Office and the Board of Canvassers for meeting the challenge at hand.

Supervisor Egan reported that the Legislative Committee scheduled for Monday, August 22, 2016 will be cancelled due to lack of agenda items. Supervisor Egan thanked members of the Board for attending the 2016 Winnebago County Fair and taking part in the judging at the fair. Supervisor Egan noted that there was no racing at the fair this year. It was offered to the promoter, they chose not to have them.

Supervisor Lautenschlager reported on his attendance at the NACo Conference held in Long Beach, California. He reported on the different workshops that he attended and how they could benefit our County.

Supervisor Warnke placed an article on the Supervisors' desks regarding the Economic Impact of Wittman Airport. He reported on highlights of the article.

Supervisor Norton commented on his attendance at the NACo Conference in Long Beach, California. He noted some of the highlights of the conference. Supervisor Norton announced that Lori Duclon from the Winnebago County Public Health Department received an "Excellence in Public Health Nursing Award" at the Wisconsin Public Health Association conference.

Motion by Supervisor Robl and seconded by Supervisor Finch to approve the July 19, 2016 proceedings.
CARRIED BY VOICE VOTE.

COUNTY EXECUTIVE'S REPORT

Executive Mark Harris voiced concern regarding Resolution No. 047-82016, to designate the usage of the grandstand & racetrack area of the Winnebago County Fairgrounds and Expo Center. Mr. Harris would like to see the County Board consult with the Parks and Recreation Committee to understand the happenings between Impact Motorsports and the Parks Committee.

COUNTY EXECUTIVE'S APPOINTMENTS

Aging and Disability Resource Center Committee

Executive Harris asked for approval of his appointments of Michael Conley-Kuhagen, 37 Tayco Street, Menasha and Susan Locke, 3001 Chain Drive, #12, Menasha; to the Aging and Disability Resource Center Committee. These are three-year terms which will expire on August 31, 2019.

Motion by Supervisor Farrey and seconded by Supervisor Konetzke to approve. CARRIED BY VOICE VOTE.

Board of Health

Executive Harris asked for approval of his re-appointments of Shiloh Ramos, 131 Nicolet Blvd. Neenah, Dr. Sam Hoffman, 4382 Swallow Banks Lane, Oshkosh, Rachel A. Youngquist, 1564 Meadow Heights Circle, Neenah; Thomas J. Egan, 3017 State Road 116, Omro; Ann W. Marshall, 1120 Olson Avenue, Oshkosh; Dr. Jan Edelstein, 1570 Deerfield Dr., Oshkosh; W. Thomas Ellis, 443 Polk Street, Omro; and Mike Norton, 1029B S. Main Street, Oshkosh; to the Board of Health. These are two-year terms which will expire on July 1, 2018.

Motion by Supervisor Farrey and seconded by Supervisor Finch to approve. CARRIED BY VOICE VOTE.

COUNTY BOARD CHAIRMAN'S REPORT

No report.

WISCONSIN COUNTY MUTUAL INSURANCE CORPORATION REPORT

John Dirkse, General Administrator of Wisconsin County Mutual Insurance Corporation, reported that Winnebago County was one of the first counties to take the lead to form their own insurance company to control insurance and risk management needs of county government. Mr. Dirkse reported on the different areas that Wisconsin County Mutual covers as far as insurance; worker's compensation is also included. "If we are liable, we will move very quickly to satisfy the claim, if we are not liable, we will move slowly to make sure it is done right" is their motto. Mr. Dirkse thanked Winnebago County for their participation and support. He then took questions from the board.

NACo TRANSPORTATION STEERING COMMITTEE UPDATE

Supervisor Kenn Olson, reported that he has been a member of the NACo Transportation Steering Committee for three years. He is a member of the Aviation Sub-Committee pertaining to the use of drones. FAA and Counties have taken a position regarding the use of drones. On June 21, 2016, the Department of Transportation and FAA

finalized rules to govern the use of drones regarding where and when they can be flown. Supervisor Olson gave some of the benefits and risks involving drones.

RECONSTRUCTION OF CTH A FROM INDIAN POINT ROAD TO CTH GG

Ernie Winters, Highway Commissioner, handed out an outline of a project that the Highway Department would like to complete on County Highway A from Indian Point Road to County Highway GG. This roadway is currently constructed of concrete with an asphalt overlay. County Highway A is considered a major collector between Oshkosh and Neenah. Mr. Winters covered the reasons why this road is in need of repair. In 2007, the Highway Department contracted Mead and Hunt to provide a design for this project. In 2012, the Highway Department applied for surface transportation funding. They have been notified that this project has been awarded to the county in the amount of \$3,385,000.00. There are strict rules and regulations that need to be followed pertaining to design and construction standards when these projects are awarded. Mr. Winters described the procedures that need to be followed. The design phase of this project will take 12 to 18 months and construction would likely begin in mid to late 2018. Mr. Winters then took questions from the board. A copy of his presentation is on file with the proceedings from this meeting in the County Clerk's office.

ZONING REPORTS & ORDINANCES

Report No. 001 – A report from the Planning and Zoning Committee regarding a requested zoning change from property owner, Experimental Aircraft Association, Town of Nekimi for a zoning change from R-1 – Rural Residential, I-1 – Light Industrial, B-3 – Regional Business and B-2 Community Business to I-1 – Light Industrial for multiple parcels. Motion by Supervisor Keller and seconded by Supervisor Egan to accept. Motion by Supervisor Farrey and seconded to refer back to the Planning and Zoning Committee. Vote on to refer back - FAILED BY VOICE VOTE. Vote on Report – CARRIED BY VOICE VOTE.

Amendatory Ordinance No. 08/01/16– A requested zoning change from R-1, I-1, B-3 and B-2 to I-1 for tax parcel nos. 012-0016, 012-0016-02, 012-0018, 012-0026, 012-0027, 012-0028, 012-0029, 012-0030, 012-0030-01, 012-0032, 012-0032-01, 012-0032-02, 012-0033, 012-0033-01, 012-0034, 012-0034-02, 012-0034-03, 012-0035, 012-0036, 012-0036-01, 012-0038, 012-0039, 012-0040, 012-0041, 012-0042, 012-0043, 012-0043-02, 012-0044, 012-0047, 012-0048, 012-0176, 012-0177, 012-0205 and 012-0210. Motion by Supervisor Keller and seconded by Supervisor Egan to adopt. Motion by Supervisor Farrey and seconded to amend the ordinance by removing four parcels that were rejected by the Town of Nekimi. Parcel nos. 012-0176, 012-0177, 012-0205 and 012-0210. CARRIED BY VOICE VOTE. Vote on Amended Ordinance – CARRIED BY VOICE VOTE.

Report No. 002 – A report from the Planning and Zoning committee regarding a requested zoning change from property owner, Linda Wachholz Living Trust and Ronald C. Wachholz Living Trust, Town of Nekimi, for a zoning change from A-2 General Agriculture to I-1 Light Industrial for tax parcel no. 012-0250-01. Motion by Supervisor Keller and seconded by Supervisor Gabert to accept. CARRIED BY VOICE VOTE.

Amendatory Ordinance No. 08/02/16 – A requested zoning change from A-2 General Agriculture to I-1 Light Industrial for tax parcel no. 012-0250-01. Motion by Supervisor Keller and seconded by Supervisor Gabert to adopt. CARRIED BY VOICE VOTE.

Report No. 003 – A report from the Planning and Zoning Committee regarding a requested zoning change from property owner, Voss Duck Inn Real Estate LLC; David G. Voss, Jane Voss; Austin C. Wheaton and Mary B. Wheaton; Town of Wolf River for a zoning change from R-8 Manufactured/Mobile Home Park/R-1 Rural Residential to R-1 Rural Residential for tax parcel nos. 032-0725, 032-0725-06 and 032-0730-26. Motion by Supervisor Kriescher and seconded by Supervisor Finch to accept. CARRIED BY VOICE VOTE.

Amendatory Ordinance 08/03/16 – A requested zoning change from R-8 Manufactured/Mobile Home Park/R-1 Rural Residential to R-1 Rural Residential for tax parcel nos. 032-0725, 032-0725-06 and 032-0730-26. Motion by Supervisor Kriescher and seconded by Supervisor Finch to adopt. CARRIED BY VOICE VOTE.

Report No. 004 – A report from the Planning and Zoning Committee regarding a requested zoning change from property owner, Cynthia A. and Edward Sypek, Town of Vinland, for a zoning change from R-1 Rural Residential to R-2 Suburban Low Density Residential for tax parcel no. 026-0661-08-01. Motion by Supervisor Farrey and seconded by Supervisor Gabert to accept. CARRIED BY VOICE VOTE.

Amendatory Ordinance No. 08/04/16 – A requested zoning change from R-1 Rural Residential to R-2 Suburban Low Density Residential for tax parcel no. 026-0661-08-01. Motion by Supervisor Farrey and seconded by Supervisor Ellis to adopt. CARRIED BY VOICE VOTE.

Amendatory Ordinance No. 08/05/16 – A request from the Town of Winneconne on behalf of Robert Beiser for a zoning change from A-2 General Farming to C-1 Commercial District for tax parcel no. 030-0135-03. Motion by Supervisor Farrey and seconded by Supervisor Scherck to adopt. CARRIED BY VOICE VOTE.

Amendatory Ordinance No. 08/06/16 – A request from the Town of Winneconne on behalf of Kathy Quigley for a zoning change from A-2 General Farming to R-1A Residential District for tax parcel no. 030-0256-01. Motion by Supervisor Farrey and seconded by Supervisor Gabert to adopt. CARRIED BY VOICE VOTE.

Amendatory Ordinance No. 08/07/16 – A request from the Town of Winneconne on behalf of Donald and Evelyn Dorn for a zoning change from A-2 General Farming to R-1A Residential District for tax parcel no. 030-0432-03. Motion by Supervisor Farrey and seconded by Supervisor Ellis to adopt. CARRIED BY VOICE VOTE.

Amendatory Ordinance No. 08/08/16 – A request from the Town of Winneconne on behalf of David Roland for a zoning change from A-2 General Farming to R-1A Residential District for tax parcel no. 030-0183-03. Motion by Supervisor Farrey and seconded by Supervisor Finch to adopt. CARRIED BY VOICE VOTE.

Amendatory Ordinance No. 08/09/16 – A request from the Town of Winneconne on behalf of Robert Wolff Revocable Trust for a zoning change from: A-2/R-1A General Farming / Residential District to R-1A Residential District to eliminate dual zoning for tax parcel nos. 030-0258-06, 030-0258-07 and 030-0258-08; and from A-2/R-1A General Farming / Residential District to A-2 General Farming to eliminate dual zoning for tax parcel no. 030-0258-09. Motion by Supervisor Snider and seconded by Supervisor Gabert to adopt. CARRIED BY VOICE VOTE.

RESOLUTIONS AND ORDINANCES

RESOLUTION NO. 040-82016: Commendation for Rebecca Carlson

WHEREAS, Becky Carlson has been employed with Park View Health Center for the past 28 years, and during that time has been a most conscientious and devoted County employee; and

WHEREAS, Becky Carlson has now retired from those duties, and it is appropriate for the Winnebago County Board of Supervisors to acknowledge her years of service.

NOW, THEREFORE, BE IT RESOLVED by the Winnebago County Board of Supervisors that sincere appreciation and commendation be and is hereby extended to Becky Carlson for the fine services she has rendered to Winnebago County.

BE IT FURTHER RESOLVED that the County Clerk send a copy of this Resolution to Becky Carlson.

Submitted by:

PERSONNEL AND FINANCE COMMITTEE

Motion by Supervisor Rasmussen and seconded by Supervisor Ellis to adopt. CARRIED BY VOICE VOTE.

RESOLUTION NO. 041-82016: Commendation for William Demler

WHEREAS, William Demler has been employed with the Winnebago County Highway Department for the past 30 years, and during that time has been a most conscientious and devoted County employee; and

WHEREAS, William Demler has now retired from those duties, and it is appropriate for the Winnebago County Board of Supervisors to acknowledge her years of service.

NOW, THEREFORE, BE IT RESOLVED by the Winnebago County Board of Supervisors that sincere appreciation and commendation be and is hereby extended to William Demler for the fine services he has rendered to Winnebago County.

BE IT FURTHER RESOLVED that the County Clerk send a copy of this Resolution to William Demler.

Submitted by:

PERSONNEL AND FINANCE COMMITTEE

Motion by Supervisor Rasmussen and seconded by Supervisor Ellis to adopt. CARRIED BY VOICE VOTE.

RESOLUTION NO. 042-82016: Disallow Claim of Jessica L. Lehmkuhl

WHEREAS, your Personnel and Finance Committee has had the claim of Jessica Lehmkuhl referred to it for attention; and

WHEREAS, your Committee has investigated the claim and recommends disallowance of same by Winnebago County.

NOW, THEREFORE, BE IT RESOLVED by the Winnebago County Board of Supervisors that the claim of Jessica Lehmkuhl filed with the County Clerk on June 21, 2016, be and the same is hereby disallowed for the reason that there is no basis for liability on the part of Winnebago County.

Submitted by:

PERSONNEL AND FINANCE COMMITTEE

Motion by Supervisor Rasmussen and seconded by Supervisor Farrey to adopt. CARRIED BY VOICE VOTE.

RESOLUTION NO. 047-82016: Designate the Usage of the Grandstand & Racetrack Area of the Winnebago County Fairgrounds and Expo Center

WHEREAS, a comprehensive plan and proposal to bring racing back to the Winnebago County Fairgrounds was approved in March of 1998 by the Winnebago County Board of Supervisors; and

WHEREAS, the County now has the crown jewel of dirt racetracks, which is fully utilized and is operating successfully; and

WHEREAS, the motorsports events that are held at the facility create significant economic impact for hundreds if not thousands of businesses in Winnebago County and provide employment for over fifty (50) employees; and

WHEREAS, a number of the annual motorsports events that are hosted at the facility promote tourism to Winnebago County, as competitors and spectators come from all over the United States for these events; and

WHEREAS, stock car racing provides quality family entertainment and improves the quality of life for many taxpayers of Winnebago County; and

WHEREAS, the facility works well for all the motorsports events held by the Winnebago County Fair; and

WHEREAS, converting the facility into a music venue would result in additional investment by taxpayers, and may cause new drainage problems that were corrected when the track was built in 1998; and

WHEREAS, there is another beautiful music venue within 10 miles of the facility that is grossly underutilized and cannot even support a full schedule of concerts and the owners cannot find a promoter to market the venue; and

WHEREAS, when the short outdoor concert season in Wisconsin is examined, it is apparent that Winnebago County and surrounding areas are saturated with established music events leaving very few if any dates for new music events in the area; and

WHEREAS, the music event known as "Lifest" has co-existed with the racetrack since Lifest moved to the Expo grounds and should be able to be accommodated by the Expo Center and/or County Park into the future. Expo grounds has more acreage that has not been developed that could accommodate a permanent stage thus having more income for the county with both venues.

NOW, THEREFORE, BE IT RESOLVED by the Winnebago County Board of Supervisors that it hereby designates the use of the Grandstand & Racetrack area for the purpose of motorsports events or other uses that may come to light that are compatible with the present facilities and improvements.

BE IT FURTHER RESOLVED by the Winnebago County Board of Supervisors that this designation of use shall stand until such time as there would be no interest by motorsports competitors and spectators.

BE IT FURTHER RESOLVED by the Winnebago County Board of Supervisors that it charges the Winnebago County Parks Department with the task of finding a promoter for the racetrack, or alternatively to enter into further negotiations with the present track promoters, as they have been in good standings to date and have a successfully proven track record operating the race track.

Submitted by:

Maribeth Gabert, District 12

Motion by Supervisor Gabert and seconded by Supervisor Farrey to adopt. Motion by Supervisor Hegg and seconded by Supervisor Wingren to refer to the Parks and Recreation Committee. Vote on to motion to refer to Parks & Recreation Committee - AYES: 8 – Blank, Scherck, Albrecht, Wingren, Robl, Singstock, Hegg and Keller; NAYES: 28; ABSTAIN – 0; ABSENT: 0. FAILED.

Motion by Supervisor Rasmussen and seconded by Supervisor Ellis to amend the resolution to read "if approved, to enter into negotiations with the promoter of the race track". After discussion, this motion was withdrawn.

Motion by Supervisor Eisen and seconded by Supervisor Warnke to submit a substitute resolution to offer Speed Zone a contract for five years. After discussion with Corporation Counsel Bodnar it was ruled this motion is out of order.

Vote on resolution as presented: AYES: 13 – Harpt, Blank, Smith, Albrecht, Gabert, Olson, Gordon, Warnke, Singstock, Brooks, Farrey, Ellis and Snider; NAYES: 22; ABSTAIN: 1 – Egan; ABSENT: 0. FAILED.

RESOLUTION NO. 043-82016: Approve Values of Tax Deeded Property

WHEREAS Section 3.03(1)(a), of the General Code of Winnebago County requires that all tax deeded lands have their appraised value determined by the Personnel and Finance Committee and approved by the County Board of Supervisors; and

WHEREAS, the parcel numbers, descriptions and the suggested appraised value of said tax deeded properties are as follows:

TOWN OF UTICA
Parcel No. 024-0205-01
1761 County Rd FF, Oshkosh
Suggested Appraised Value \$8, 000.00

CITY OF NEENAH
Parcel No. 808-0242
525 Elm St., Neenah
Suggested Appraised Value \$35, 000.00

TOWN OF WINNECONNE
Parcel No. 030-0091-10
6688 Lasley Shore Dr. Winneconne
Suggested Appraised Value \$25, 000.00

CITY OF OSHKOSH
Parcel No. 908-0476
Formerly 1233 Ceape Ave, Oshkosh
Suggested Appraised Value \$10,000.00

CITY OF MENASHA
Parcel No. 703-0861
267 Kaukauna St, Menasha
Suggested Appraised Value \$35,000.00

CITY OF OSHKOSH
Parcel No. 915-1096
Formerly 1602 Bowen St, Oshkosh
Suggested Appraised Value \$10,000.00

CITY OF NEENAH
Parcel No. 806-1382
Formerly 969 Fredrick Dr, Neenah
Suggested appraised value \$20,000.00

WHEREAS, the appraised value of said property as provided by the treasurer has been approved by the committee as is required by Section 3.03(1)(a) of the General Code of Winnebago County and is herewith submitted to the Winnebago County Board of Supervisors for approval.

NOW, THEREFORE, BE IT RESOLVED by the Winnebago County Board of Supervisors that it hereby approves the appraised values of the parcels of property listed above, which were acquired by the Winnebago County Treasurer for tax delinquency pursuant to an In Rem judgment.

Submitted by:
PERSONNEL AND FINANCE COMMITTEE

Motion by Supervisor Rasmussen and seconded by Supervisor Hegg to adopt. CARRIED BY VOICE VOTE.

RESOLUTION NO. 044-82016: Amend County Investment Policy to Allow For Investing Funds in Municipal Securities Consisting of Bonds or Securities of Any County, City, Drainage District, Village, Town, Technical College District, or School District of States Adjacent to the State of Wisconsin

WHEREAS, the current investment policy allows for the investment in municipal securities limited to those municipal units of government located in the State of Wisconsin; and

WHEREAS, municipal securities would include those of any county, city, drainage district, village, town, technical college district or school district; and

WHEREAS, municipal securities generally pay .2 to .3% higher interest than those issued by federal agencies; and

WHEREAS, the present policy limits investments to securities that are rated in the top two categories by Standard and Poor's and Moody's rating agencies; and

WHEREAS, those investments would be limited to securities that are general obligations backed by the full faith and valuation of the municipality, thus eliminating investments in revenue bonds, and

WHEREAS, municipal securities are not available to the same extent as Federal agencies securities and being able to invest in those issued by adjacent states provides a larger number of securities that would be available to Winnebago County.

NOW, THEREFORE, BE IT RESOLVED by the Winnebago County Board of Supervisors that it hereby approves amending paragraph 5 of the investment policy to read as follows:

5. In bonds or securities of any county, city, drainage district, village, town, technical college district, or school district of this state, Wisconsin, and those states adjacent to the state of Wisconsin provided that they are general obligations and rated in the two rating categories by Standard and Poor's, or Moody's rating agencies.

Submitted by:
PERSONNEL AND FINANCE COMMITTEE

Motion by Supervisor Rasmussen and seconded by Supervisor Roh to adopt. CARRIED BY VOICE VOTE.

RESOLUTION NO. 045-82016: Support the "Just Fix It" Campaign and Urge the Governor and Legislature to Agree on a Sustainable Solution to Transportation Funding for Wisconsin Roadways

WHEREAS; local government in Wisconsin is responsible for about 90% of the road miles in the State; and

WHEREAS, Wisconsin's diverse economy is dependent upon county and town roads as well as city and village streets across the state; and

WHEREAS, according to a Transportation condition report commissioned by the Local Government Institute of Wisconsin, the condition of Wisconsin highways is now in the bottom third of the country; and

WHEREAS, state funding for local roads has failed to keep up with costs over the past several decades which has adversely affected local transportation finances. According to the Local Government Institute, municipal transportation spending has declined from \$275 per capita in 2000 to \$227 in 2012; and

WHEREAS, levy limits do not allow local government to make up for the deterioration of state funding; and

WHEREAS, Wisconsin's over-reliance on borrowing diminishes other funding sources such as the state gas tax and registration fees, which are used to pay debt service rather than fund transportation needs; and

WHEREAS, the Winnebago County Board of Supervisors recognizes that our state highway and interstate system plays a vital role in the economy of Wisconsin and both state and local roads need to be properly maintained in order for our economy to grow; and

NOW, THEREFORE, BE IT RESOLVED by the Winnebago County Board of Supervisors that it hereby supports the "Just Fix It" campaign and urges the Governor and State Legislature to work towards a sustainable solution which has a responsible level of bonding and adjusts our user fees to adequately support Wisconsin's transportation systems.

BE IT FURTHER RESOLVED by the Winnebago County Board of Supervisors that it hereby directs the Winnebago County Clerk to transmit a copy of this Resolution to the Governor of the State of Wisconsin, to legislators representing Winnebago County constituents, and to the Wisconsin Counties' Association.

Submitted by:
LEGISLATIVE COMMITTEE

Motion by Supervisor Egan and seconded by Supervisor Ellis to adopt. Motion by Supervisor Farrey and seconded by Supervisor Ellis to amend Line 25 to remove "and adjust our user fees". Vote on Amendment - AYES: 22; NAYES: 12 – Konetzke, Eisen, Long, Albrecht, Thompson, Wojciechowski, Gordon, Wingren, Warnke, Robl, Hegg and Snider; ABSTAIN: 0; ABSENT: 2 – Barker and Locke. CARRIED.

Vote on resolution as amended: AYES: 25; NAYES: 6 – Konetzke, Eisen, Smith, Gabert, Thompson, and Robl; ABSTAIN: 3 – Ramos, Gordon and Hegg; ABSENT: 2 – Barker and Locke. CARRIED.

PLEASE NOTE: After this vote was taken, it was questioned whether County Board Rule 7.7, which requires a three-quarters vote on resolutions expressing support or opposition to pending or proposed state or federal legislation, would apply to this resolution. If Rule 7.7 does apply, Resolution No. 045-82016 would have failed. Chairman Albrecht asked that John Bodnar, Winnebago County Corporation Counsel, review this issue and notify the board of his decision.

On August 22, 2016, Mr. Bodnar sent a memo explaining that this resolution does not fit the definition of a resolution as described in Rule 7.7 and that the resolution was passed as amended on August 16, 2016.

RESOLUTION NO. 046-82016: Approve the County Highway Department To Be the County Department Authorized and Responsible for Overseeing, Maintaining and Improvement of All County-owned Roadways, Driveways and Parking Lots

WHEREAS Winnebago County has a number of asphalt public parking lots and driveways in and around county-owned buildings; and

WHEREAS, the asphalt parking and driveway areas are generally attached to County buildings and have historically been overseen and maintained by the Facilities Department whose focus is typically building-oriented; and

WHEREAS, the condition of some of our parking and driving areas are gradually deteriorating and are in need of regular inspection and pavement maintenance on a regular, programmed basis; and

WHEREAS, the Winnebago County Highway Department is organized, owns the equipment, and is structured so as to inspect and provide maintenance work on asphalt surfaces; and

WHEREAS, the Facilities and Highway Committees have discussed this designation the Highway Department as the parking lot and driveway oversight department and are in agreement with the concept.

NOW, THEREFORE, BE IT RESOLVED by the Winnebago County Board of Supervisors that it hereby designates and authorizes the Highway Department as the overseer and maintainer of all Winnebago County driveways, parking lots, and County-owned roadways.

BE IT FURTHER RESOLVED by the Winnebago County Board of Supervisors that it hereby directs that funding to provide these services be included in the 2017 County Highway Operating budget.

Submitted by:
HIGHWAY COMMITTEE

Motion by Supervisor Robl and seconded by Supervisor Farrey to adopt. CARRIED BY VOICE VOTE.

RESOLUTION NO. 048-82016: Amend Section 6.50 of the Rules of the Winnebago County Board of Supervisors: Public Comment at Meetings of the County Board of Supervisors

WHEREAS, Winnebago County citizens have often wanted to express feelings and opinions on matters not listed on the Agenda; and

WHEREAS, the 1st Amendment of the United States Constitution guarantees freedoms concerning expression and the right to petition. The 1st Amendment also guarantees the right of citizens to assemble peaceably and to petition their government.

NOW, THEREFORE, BE IT RESOLVED by the Winnebago County Board of Supervisors that it hereby amends Section 6.5 of the Rules of the Winnebago County Board of Supervisors to read as follows: Public comments will be heard by the Board with regard to matters pertaining to County Board business.

Submitted by:

JUDICIARY AND PUBLIC SAFETY COMMITTEE

Motion by Supervisor Wingren and seconded by Supervisor Norton to adopt. Motion by Supervisor Farrey and seconded by Supervisor Snider to amend Line 16 to read as follows: "comments will be heard by the Board with regard to matters pertaining to requested future agenda items". Vote on Amendment – FAILED BY VOICE VOTE.

Vote on Resolution: AYES: 16 – Konetzke, Eisen, Ramos, Long, Scherck, Thompson, Wojciechowski, Gordon, Wingren, Lautenschlager, Norton, Robl, Singstock, Brooks, Farrey and Snider; NAYES: 18; ABSTAIN: 0; ABSENT: 2 – Barker and Locke. FAILED.

Motion by Supervisor Robl and seconded by Supervisor Scherck to adjourn until the September 6, 2016 meeting at 6:00 p.m. The meeting was adjourned at 9:35 p.m.

Submitted by:

Julie A. Barthels

Winnebago County Deputy Clerk

State of Wisconsin)
County of Winnebago) ss

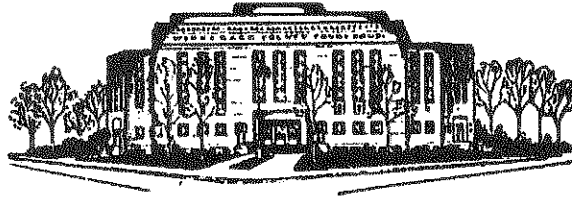
I, Julie A. Barthels, do hereby certify that the foregoing is a true and correct copy of the Journal of the Winnebago County Board of Supervisors for their regular meeting held August 16, 2016.

Julie A. Barthels

Winnebago County Deputy Clerk

MARK L. HARRIS
County Executive

112 OTTER AVE., P. O. BOX 2808
OSHKOSH, WISCONSIN 54903-2808



OSHKOSH (920) 232-3450
FOX CITIES (920) 727-2880
FAX (920) 232-3429

Winnebago County
Office of the County Executive

TO: Members of the Winnebago County Board

FROM: Mark L. Harris

DATE: September 20, 2016

SUBJECT: Appointments to the **MISSISSIPPI VALLEY HEALTH SERVICES COMMISSION** and the **MARSH COUNTY HEALTH ALLIANCE**.

Subject to your approval, I am hereby making the following appointments to the **MISSISSIPPI VALLEY HEALTH SERVICES COMMISSION** and the **MARSH COUNTY HEALTH ALLIANCE**.

Mike Norton
1029B S. Main St.
Oshkosh, WI. 54902

These are two (2) terms which will expire June 30, 2018.

Thank you in advance for your favorable consideration of these appointments.


Mark L. Harris, County Executive

MLH/jpf
CC: County Clerk
Human Services Department

MARK L. HARRIS
County Executive

112 OTTER AVE., P. O. BOX 2808
OSHKOSH, WISCONSIN 54903-2808



Winnebago County
Office of the County Executive

OSHKOSH (920) 232-3450
FOX CITIES (920) 727-2880
FAX (920) 232-3429

TO: Members of the Winnebago County Board

FROM: Mark L. Harris

DATE: September 20, 2016

SUBJECT: Re-appointments to the **AGING AND DISABILITY RESOURCE CENTER COMMITTEE**

Subject to your approval, I am hereby making the following re-appointments to the **AGING AND DISABILITY RESOURCE CENTER COMMITTEE**.

Deb Hogue
4390 Lakeland Dr.
Oshkosh, WI. 54904

Donna Lohry
511 W. Bent St.
Oshkosh, WI. 54901

Harold Singstock
229 N. Meadow St.
Oshkosh, WI. 54902

Claire Steger
237 Stevens St.
Neenah, WI. 54956

These are three (3) terms which will expire August 31, 2019.

Thank you in advance for your favorable consideration of these re-appointments.


Mark L. Harris, County Executive

MLH/jpf
CC: County Clerk
Aging and Disability Resource Center Committee

2015 Veterans Service Commission Annual Report

TO: The Honorable Chairman and Supervisors of the Winnebago County Board.

FROM: The Honorable members of the Veterans Service Commission

In accordance with Chapter 45.81 of the Wisconsin Statutes, this Annual Report of the Veterans Service Commission is provided.

A report for the expenditures made by the Veterans Service Commission for the relief of needy veterans and/or their families for calendar year 2015 is herewith submitted.

The Veterans Service Commission, in accordance with Chapter 45.81 of the Wisconsin Statutes, approved these expenditures.

The names of the recipients of this aid and the amounts received are a matter of record in the Veterans Service office in the event such information is available when authorized by law.

The costs of the operation of the Veterans Service Commission for 2015 were as follows:

Aid to needy veterans and/or their families (77 approved)	\$ 22,302.16
Aid repaid	\$ 560.00

The 2015 Winnebago County Veterans Service Veterans Service Commission Annual Report is respectfully submitted,

Robert Warnke
Chairman, Winnebago County Veterans Service Commission

9/20/2016

Report No: 001

TO THE WINNEBAGO COUNTY BOARD SUPERVISORS

Your Planning and Zoning Committee begs leave to report:

WHEREAS, it has reviewed the Petition for Zoning Amendment 2016-ZC-3710 filed with the County Clerk by:

WEYENBERG, PETER G ; WEYENBERG, CINDY, Town of NEENAH and referred to the Planning and Zoning Committee on 8/16/2016 and

WHEREAS, a Public Hearing was held on 8/30/2016, pursuant to mailed and published notice as provided by as on the following:

PROPERTY INFORMATION:

Owner(s) of Property: WEYENBERG, PETER G ; WEYENBERG, CINDY
Agent(s):

Location of Premises Affected: 6986 WOODENSHOE RD
NEENAH, WI 54956

Legal Description: Being a part of the NW 1/4 of the SW 1/4, Section 6, Township 19 North, Range 17 East, Town of Neenah, Winnebago County, Wisconsin.

Tax Parcel No.: 010-008804(P)

Sewer:	<input checked="" type="checkbox"/>	Existing	<input type="checkbox"/>	Required	<input type="checkbox"/>	Municipal	<input checked="" type="checkbox"/>	Private System
Overlay:	<input type="checkbox"/>	Airport	<input type="checkbox"/>	SWDD	<input type="checkbox"/>	Shoreland		
	<input type="checkbox"/>	Floodplain	<input type="checkbox"/>	Microwave	<input type="checkbox"/>	Wetlands		

WHEREAS,
Applicant is requesting a rezoning to R-1 Rural Residential,

And

WHEREAS, we received notification from the Town of NEENAH that the town took no action

And

WHEREAS, your Planning and Zoning Committee, being fully informed of the facts, and after full consideration of the matter, making the following findings:

1. The Town of NEENAH has Not Responded.
2. The Town of Neenah has taken no action.
3. There were no objections.
4. Proposed use is compatible with adjacent uses.

Findings were made in consideration of Section 23.7-5(b)(1),(2), &(3).

NOW THEREFORE BE IT RESOLVED, that this committee hereby reports our findings for your consideration and is hereby recommending Approval by a vote of 5-0

AND BE IT FURTHER RESOLVED, by the Winnebago County Board of Supervisors, that the enclosed Ordinance is hereby [ADOPTED] OR [DENIED].

For the Planning and Zoning Committee

AMENDATORY ORDINANCE # 09/01/16

The Winnebago County Board of Supervisors do ordain Zoning Amendment # 2016-ZC-3710 as follows:

Being a part of the NW 1/4 of the SW 1/4, Section 6, Township 19 North, Range 17 East, Town of Neenah, Winnebago County, Wisconsin.

FROM: A-2 General Agriculture,

TO: R-1 Rural Residential,

Adopted/ Denied this _____ day of _____, 20_____

David Albrecht, Chairperson

ATTEST:

Susan T. Ertmer, Clerk

APPROVED BY WINNEBAGO COUNTY EXECUTIVE THIS _____ DAY OF _____, 20_____.

Mark Harris
County Executive

County Board Supervisory district 30 - Farrey

Application #16-ZC-3710

Date of Hearing:

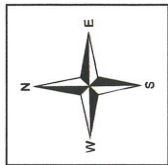
August 30, 2016

Owner(s):

Weyenberg, Peter & Cindy

Subject Parcel(s):

010008804(P)



Winneshago County
WINGS Project

Scale

1 inch : 300 feet

County Zoning Districts

R-1	PDD	B-1
R-2	A-1	B-2
R-3	A-2	B-3
R-4	I-1	M-1
R-8	I-2	Town Zoning

City of Oshkosh Extraterritorial
Zoning Jurisdiction

Incorporated Area



○ = SITE

Application #16-ZC-3710

Date of Hearing:

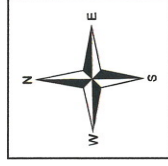
August 30, 2016

Owner(s):

Weyenberg, Peter & Cindy

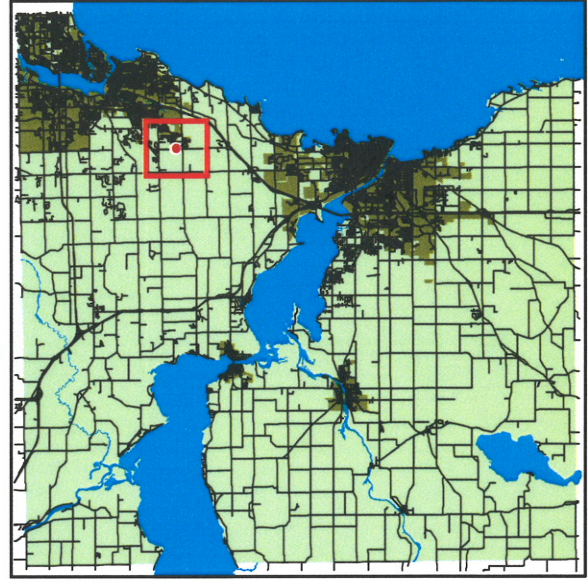
Subject Parcel(s):

010008804(P)



Winnebago County
WINGS Project

● = SITE



1 inch : 2,000 feet

WINNEBAGO COUNTY

9/20/2016

Report No: 002

TO THE WINNEBAGO COUNTY BOARD SUPERVISORS

Your Planning and Zoning Committee begs leave to report:

WHEREAS, it has reviewed the Petition for Zoning Amendment 2016-ZC-3720 filed with the County Clerk by:

KUEPPER, CRAIG L ; KUEPPER, PAMELA J, Town of WOLF RIVER and referred to the Planning and Zoning Committee on 8/16/2016 and

WHEREAS, a Public Hearing was held on 8/30/2016, pursuant to mailed and published notice as provided by as on the following:

PROPERTY INFORMATION:

Owner(s) of Property: KUEPPER, CRAIG L ; KUEPPER, PAMELA J
Agent(s): SMITH, JAMES - MARTENSON & EISELE, INC.

Location of Premises Affected: Across from 7431 Richter Ln
LARSEN, WI 54947

Legal Description: Being a part of Government Lot 3, Section 36, Township 20 North, Range 14 East, Town of Wolf River, Winnebago County, Wisconsin.

Tax Parcel No.: 032-073016

Sewer: ☐ Existing ☐ Required ☐ Municipal ☐ Private System
Overlay: ☐ Airport ☐ SWDD ☒ Shoreland
☒ Floodplain ☐ Microwave ☒ Wetlands

WHEREAS,
Applicant is requesting a rezoning to R-1 Rural Residential,

And

WHEREAS, we received notification from the Town of WOLF RIVER recommending Approval

And

WHEREAS, your Planning and Zoning Committee, being fully informed of the facts, and after full consideration of the matter, making the following findings:

1. The Town of WOLF RIVER has Approved. Town action is advisory due to shoreland jurisdiction. Town findings for Approval were as follows: 1) No objections from neighbors. 2) Compatible with surrounding area lots. 3) Elevation on newest survey indicates property is above wetland designation.
2. There were no objections.
3. Proposed use is compatible with adjacent uses.

Findings were made in consideration of Section 23.7-5(b)(1),(2), & (3).

NOW THEREFORE BE IT RESOLVED, that this committee hereby reports our findings for your consideration and is hereby recommending Approval by a vote of 5-0

AND BE IT FURTHER RESOLVED, by the Winnebago County Board of Supervisors, that the enclosed Ordinance is hereby [ADOPTED] OR [DENIED].

For the Planning and Zoning Committee

AMENDATORY ORDINANCE # 09/02/16

The Winnebago County Board of Supervisors do ordain Zoning Amendment # 2016-ZC-3720 as follows:

Being a part of Government Lot 3, Section 36, Township 20 North, Range 14 East, Town of Wolf River, Winnebago County, Wisconsin.

FROM: R-1 Rural Residential,

TO: R-1 Rural Residential without wetlands

Adopted/ Denied this _____ day of _____, 20_____

David Albrecht, Chairperson

ATTEST:

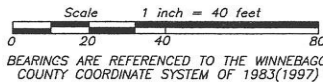
Susan T. Ertmer, Clerk

APPROVED BY WINNEBAGO COUNTY EXECUTIVE THIS _____ DAY OF _____, 20_____.

Mark Harris
County Executive


County Board Supervisory district 36 - Kriescher

THE SOUTH HALF OF LOT 7 OF "RICHTER'S PLAT" AND PART OF GOVERNMENT LOT 3,
IN SECTION 36, TOWNSHIP 20 NORTH, RANGE 14 EAST, TOWN OF WOLF RIVER,
WINNEBAGO COUNTY, WISCONSIN.



- 1-1/4" O.D. IRON PIPE SET, 18" LONG,
WEIGHING 1.130 LBS. PER LIN. FOOT
- ▲ RAILROAD SPIKE FOUND
- 3/4" REBAR FOUND
- 1-1/4" O.D. IRON PIPE FOUND
- 1.75" O.D. IRON PIPE FOUND
- ⊙ GOVERNMENT CORNER FOUND

I hereby certify that I have surveyed the property as shown, according to official records and that the plat above drawn is an accurate and correct representation of said survey.


 Wisconsin Professional Land Surveyor Date May 20, 2016



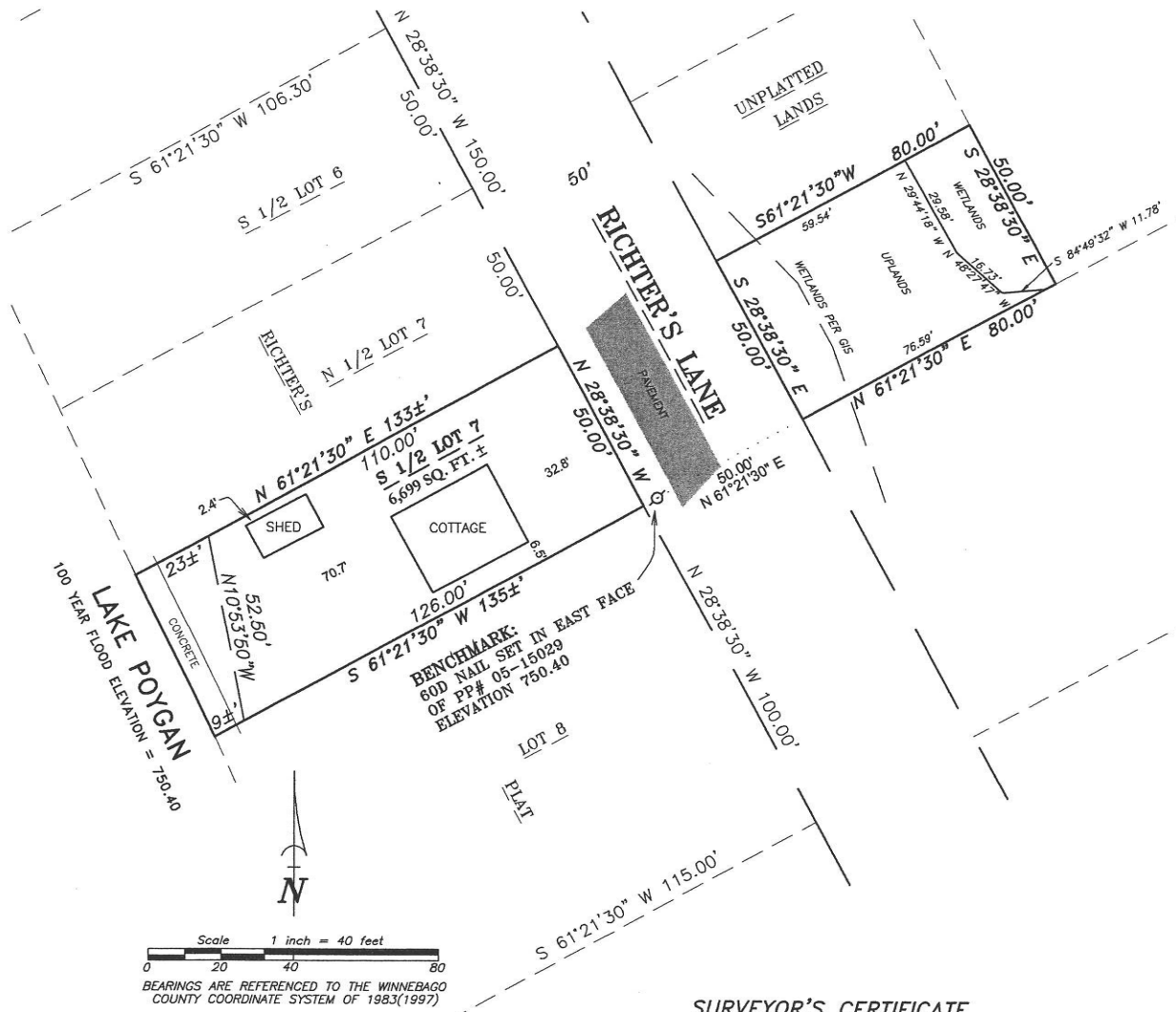
m.e.

109 West Main Street
Omro, WI 54963
www.martenson-eisele.com
P 920.685.6240 F 920.685.6340

THIS INSTRUMENT WAS DRAFTED BY: DSL

UPLAND AREA

PART OF GOVERNMENT LOT 3, IN SECTION 36, TOWNSHIP 20 NORTH, RANGE 14 EAST, TOWN OF WOLF RIVER, WINNEBAGO COUNTY, WISCONSIN, DESCRIBED AS FOLLOWS:
COMMENCING AT THE SOUTH EAST CORNER OF LOT 7 RICHTER'S PLAT; THENCE NORTH 61 DEGREES 21 MINUTES 30 SECONDS EAST 50.00 FEET TO THE POINT OF BEGINNING;
THENCE NORTH 61 DEGREES 21 MINUTES 30 SECONDS EAST 76.59 FEET; THENCE SOUTH 84 DEGREES 49 MINUTES 32 SECONDS WEST 11.78 FEET; THENCE NORTH 48 DEGREES 27 MINUTES 47 SECONDS WEST 16.73 FEET; THENCE NORTH 29 DEGREES 44 MINUTES 18 SECONDS WEST 29.58 FEET; THENCE SOUTH 61 DEGREES 21 MINUTES 30 SECONDS WEST 59.54 FEET; THENCE SOUTH 28 DEGREES 38 MINUTES 30 SECONDS EAST 50.00 FEET TO THE POINT OF BEGINNING.



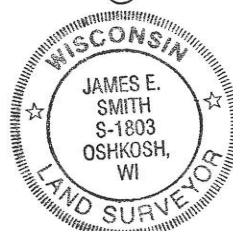
LEGEND

- 1-1/4" O.D. IRON PIPE SET, 18" LONG, WEIGHING 1.130 LBS. PER LIN. FOOT
- ▲ RAILROAD SPIKE FOUND
- 3/4" REBAR FOUND
- 1-1/4" O.D. IRON PIPE FOUND
- 1.75" O.D. IRON PIPE FOUND
- ⊕ GOVERNMENT CORNER FOUND

SURVEYOR'S CERTIFICATE

I hereby certify that I have surveyed the property as shown, according to official records and that the plat above drawn is an accurate and correct representation of said survey.

James E. Smith JUNE 30, 2016
Wisconsin Professional Land Surveyor Date



SURVEY FOR:
CRAIG KUEPPER
1513 LUCERNE DRIVE
MENASHA, WI 54952

Martenson & Eisele, Inc.



109 West Main Street
Omro, WI 54963
www.martenson-eisele.com
P 920.685.6240 F 920.685.6340

Planning
Environmental
Surveying
Engineering
Architecture

PROJECT NO. 0-2031-001

FILE 2031001POS.DWG

THIS INSTRUMENT WAS DRAFTED BY: DSL

Application #16-ZC-3720

Date of Hearing:

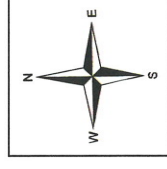
August 30, 2016

Owner(s):

Kuepper, Craig & Pamela

Subject Parcel(s):

032073016



Winnipeg County
WINGS Project

Scale

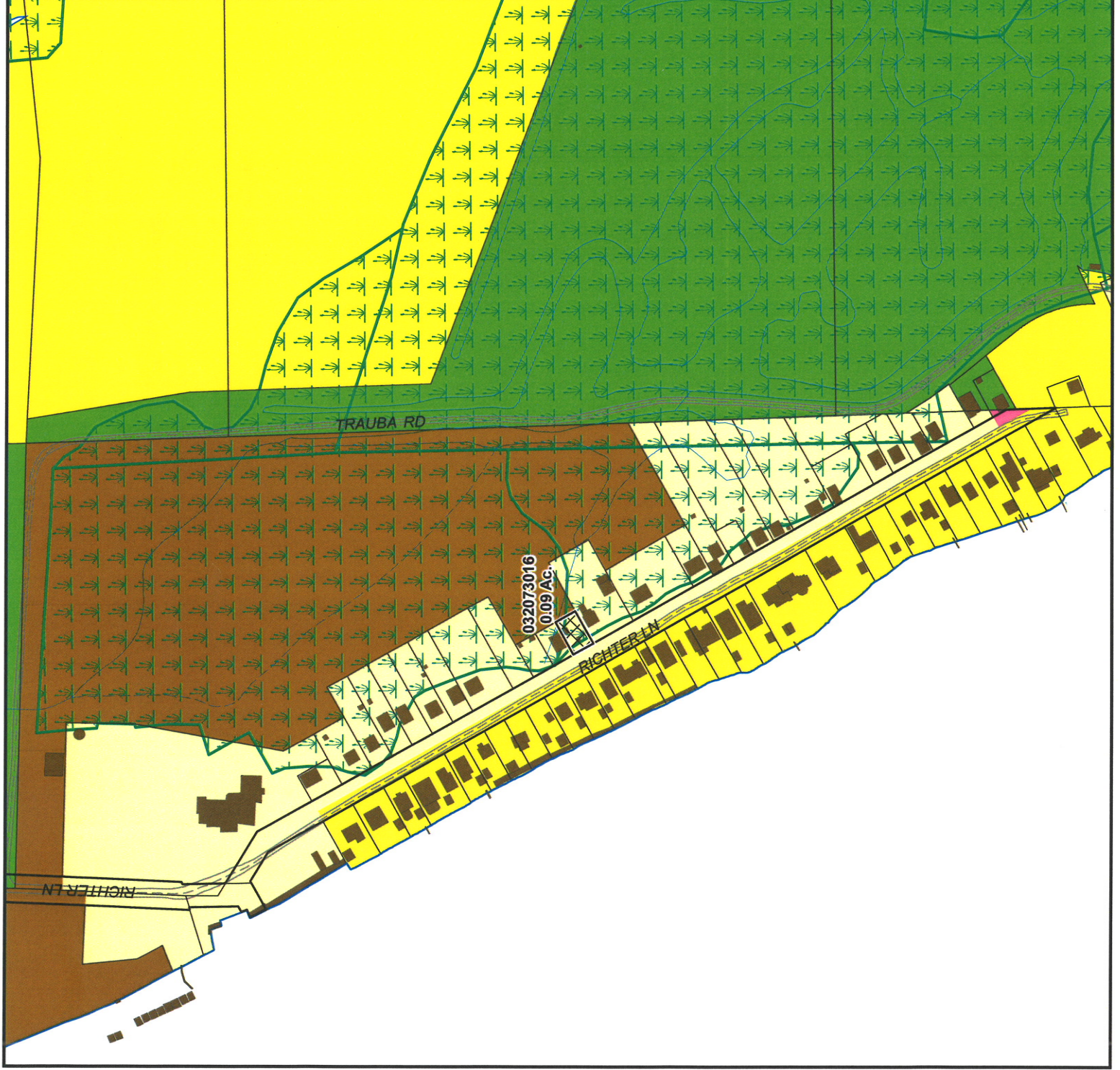
1 inch : 300 feet

County Zoning Districts

R-1	PDD	B-1
R-2	A-1	B-2
R-3	A-2	B-3
R-4	I-1	M-1
R-8	I-2	Town Zoning

City of Oshkosh Extraterritorial
Zoning Jurisdiction

Incorporated Area



○ = SITE

Application #16-ZC-3720

Date of Hearing:

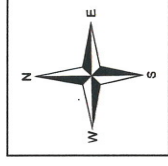
August 30, 2016

Owner(s):

Kuepper, Craig & Pamela

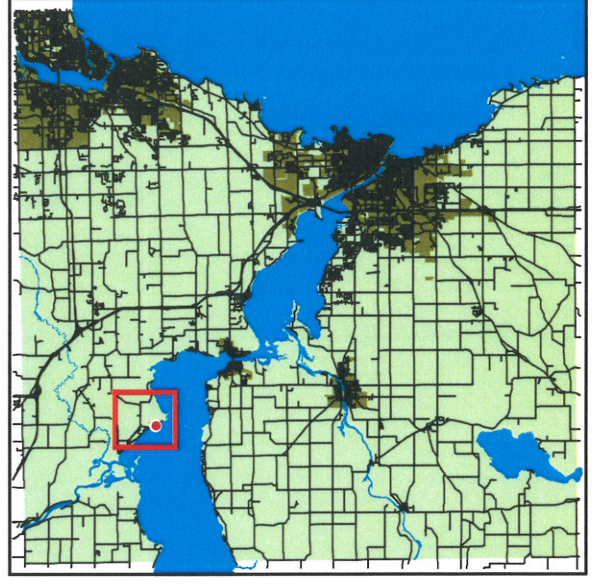
Subject Parcel(s):

032073016



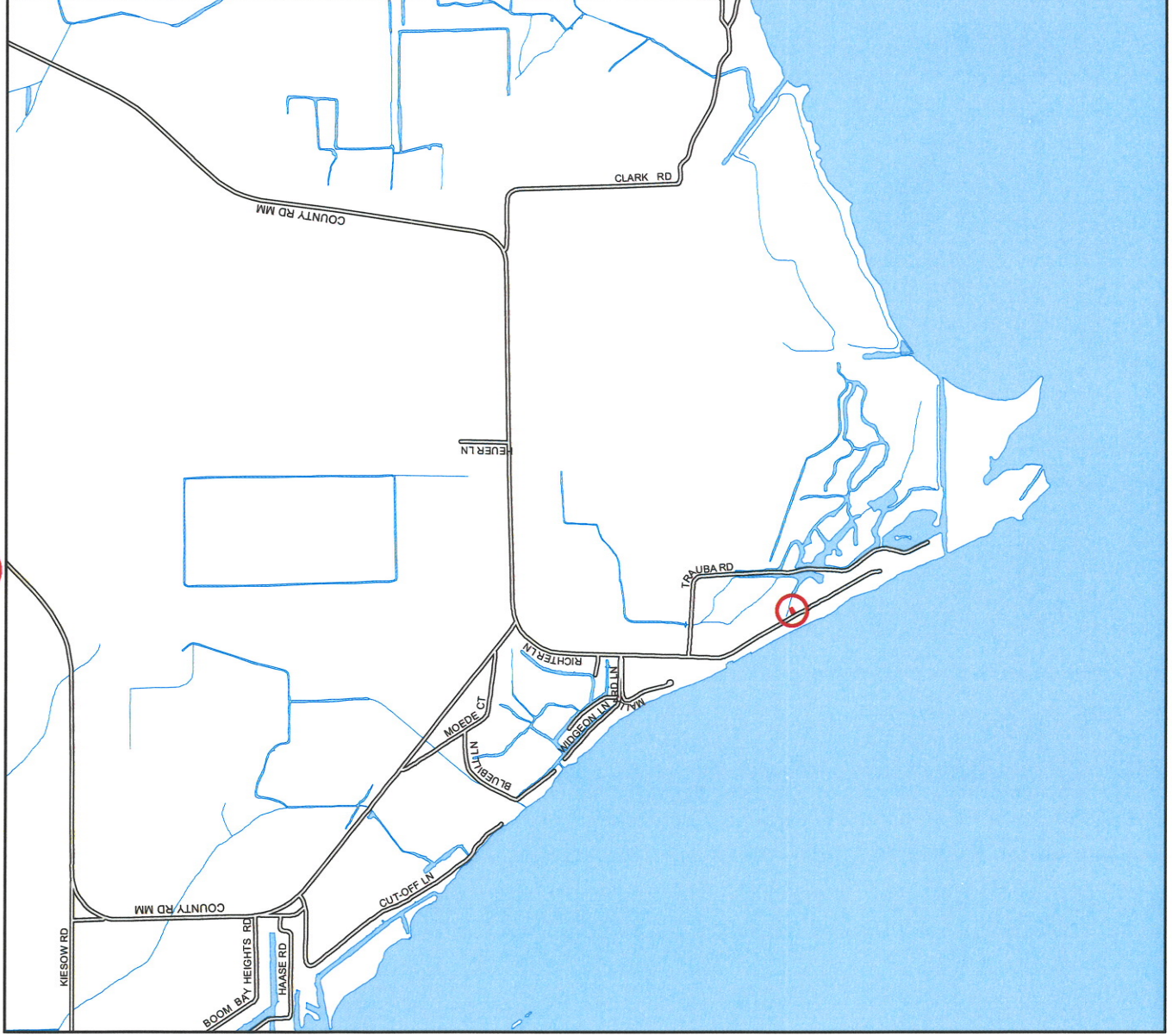
*Winnebago County
WINGS Project*

● = SITE



1 inch : 2,000 feet

WINNEBAGO COUNTY



TO THE WINNEBAGO COUNTY BOARD SUPERVISORS

Your Planning and Zoning Committee begs leave to report:

WHEREAS, it has reviewed the Petition for Zoning Amendment 2016-ZC-3730 filed with the County Clerk by:

HEBERER, WILLIAM, Town of WOLF RIVER and referred to the Planning and Zoning Committee on 8/16/2016 and

WHEREAS, a Public Hearing was held on 8/30/2016, pursuant to mailed and published notice as provided by as on the following:

PROPERTY INFORMATION:

Owner(s) of Property: HEBERER, WILLIAM
Agent(s): REICHENBERGER, TED

Location of Premises Affected: SOUTH OF 9511 OLD RD
FREMONT, WI 54940

Legal Description: Being a part of Government Lot 2, Section 5, Township 20 North, Range 14 East, Town of Wolf River, Winnebago County, Wisconsin.

Tax Parcel No.: 032-010005

Sewer:	<input type="checkbox"/>	Existing	<input type="checkbox"/>	Required	<input type="checkbox"/>	Municipal	<input type="checkbox"/>	Private System
Overlay:	<input type="checkbox"/>	Airport	<input type="checkbox"/>	SWDD	<input checked="" type="checkbox"/>	Shoreland		
	<input checked="" type="checkbox"/>	Floodplain	<input type="checkbox"/>	Microwave	<input type="checkbox"/>	Wetlands		

WHEREAS,
Applicant is requesting a rezoning to I-1 Light Industrial,

And

WHEREAS, we received notification from the Town of WOLF RIVER recommending preliminary approval

And

WHEREAS, your Planning and Zoning Committee, being fully informed of the facts, and after full consideration of the matter, making the following findings:

1. The Town of WOLF RIVER gave preliminary approval (town support). Town action is advisory due to shoreland jurisdiction.
2. There were no objections.
3. Proposed use is compatible with adjacent uses.

Findings were made in consideration of Section 23.7-5(b)(1),(2), &(3).

NOW THEREFORE BE IT RESOLVED, that this committee hereby reports our findings for your consideration and is hereby recommending Approval by a vote of 5-0

AND BE IT FURTHER RESOLVED, by the Winnebago County Board of Supervisors, that the enclosed Ordinance is hereby [ADOPTED] OR [DENIED].

For the Planning and Zoning Committee

AMENDATORY ORDINANCE # 09/03/16

The Winnebago County Board of Supervisors do ordain Zoning Amendment # 2016-ZC-3730 as follows:

Being a part of Government Lot 2, Section 5, Township 20 North, Range 14 East, Town of Wolf River, Winnebago County, Wisconsin.

FROM: B-2 Community Business,

TO: I-1 Light Industrial,

Adopted/ Denied this _____ day of _____, 20_____

David Albrecht, Chairperson

ATTEST:

Susan T. Ertmer, Clerk

APPROVED BY WINNEBAGO COUNTY EXECUTIVE THIS _____ DAY OF _____, 20_____.

Mark Harris
County Executive

County Board Supervisory district 36 - Kriescher

Application #16-ZC-3730

Date of Hearing:

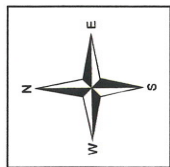
August 30, 2016

Owner(s):

Heberer, William & Ann

Subject Parcel(s):

032010005



Winnipeg County
WINGS Project

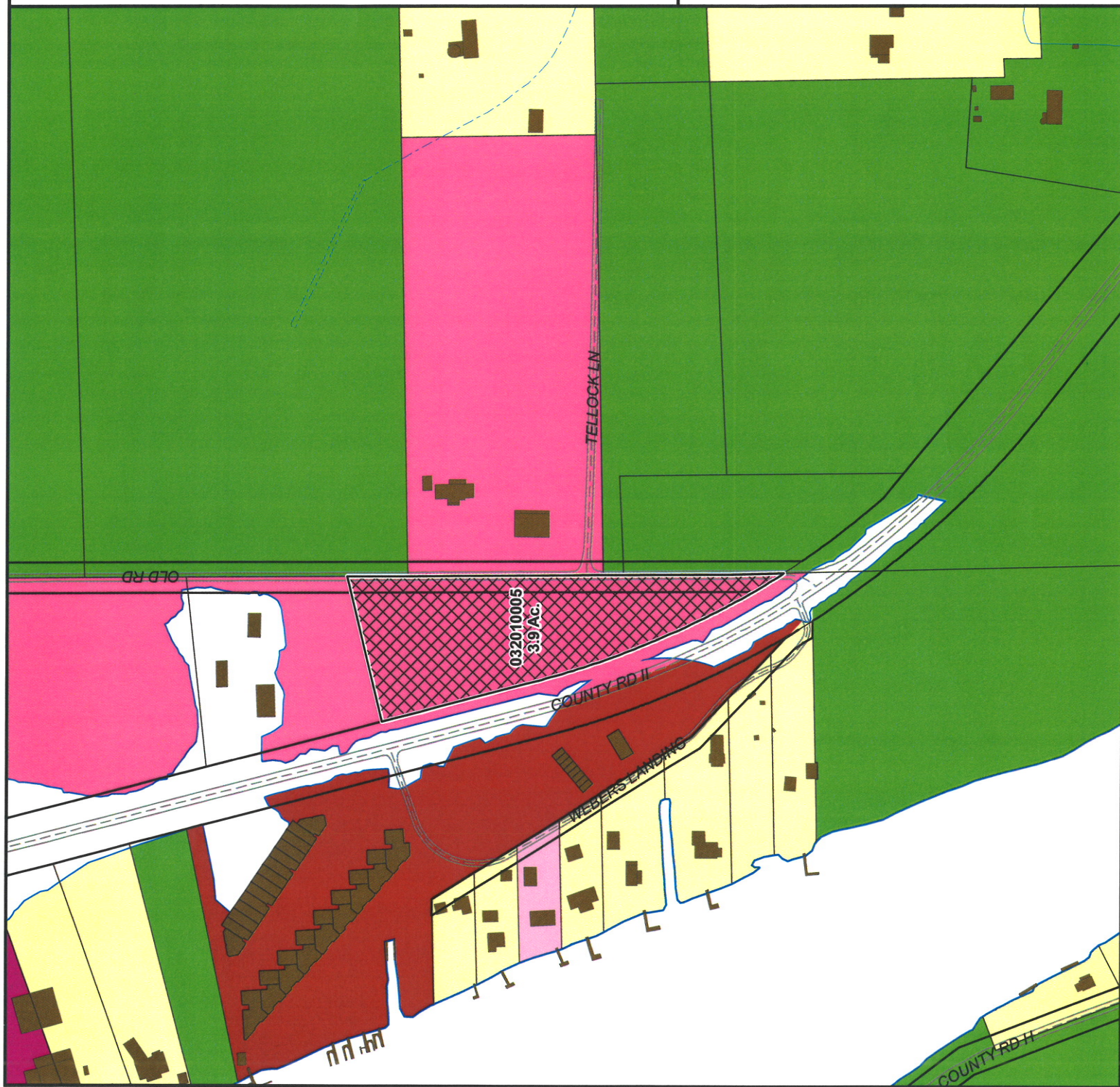
Scale
1 inch : 300 feet

County Zoning Districts

R-1	PDD	B-1
R-2	A-1	B-2
R-3	A-2	B-3
R-4	I-1	M-1
R-8	I-2	Town Zoning

City of Oshkosh Extraterritorial
Zoning Jurisdiction

Incorporated Area



○ = SITE

Application #16-ZC-3730

Date of Hearing:

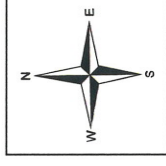
August 30, 2016

Owner(s):

Heberer, William & Ann

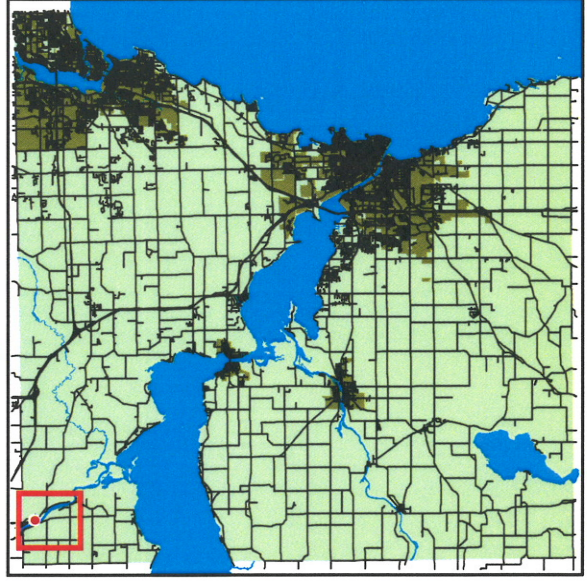
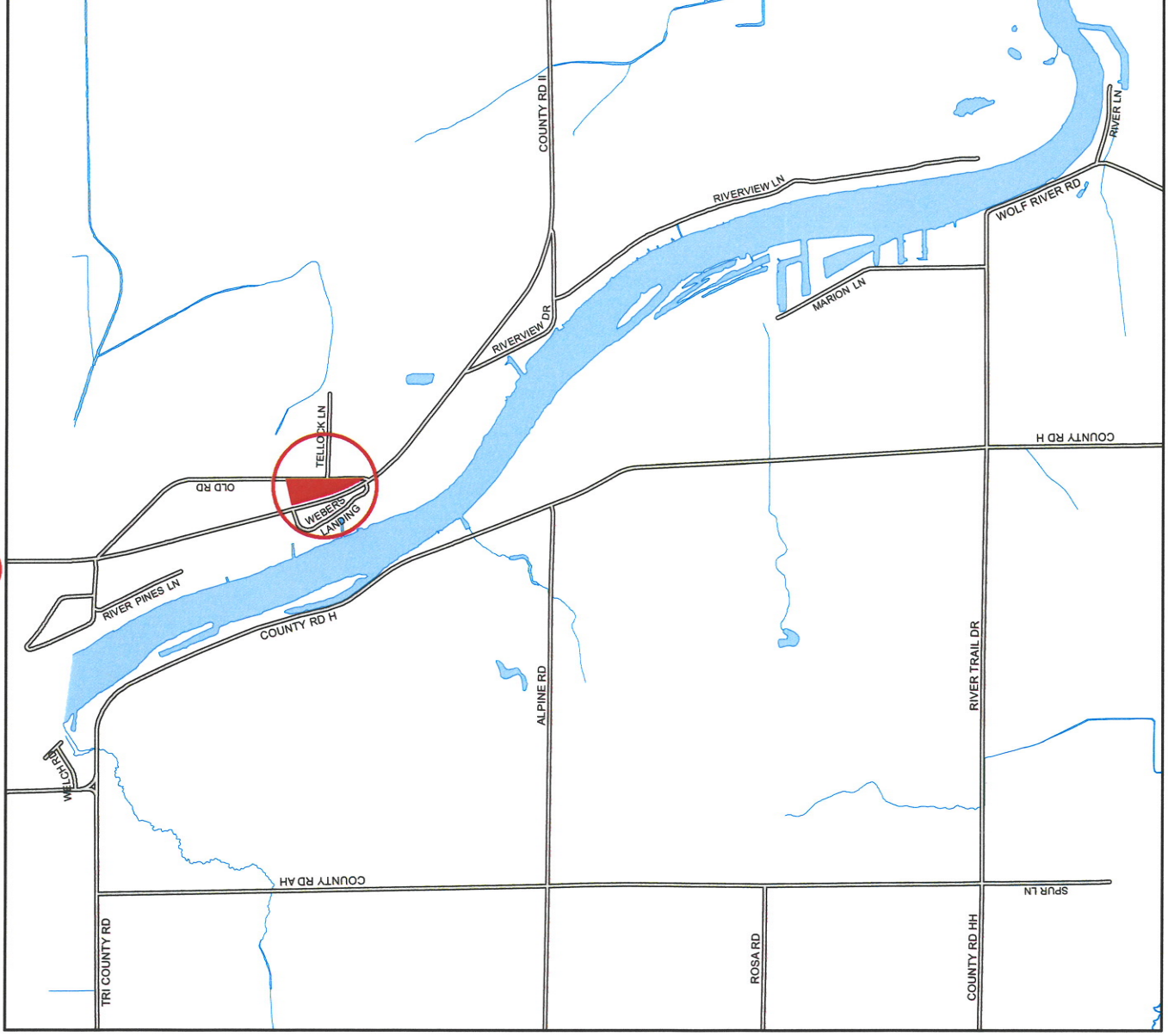
Subject Parcel(s):

032010005



*Winnebago County
WINGS Project*

● = SITE



1 inch : 2,000 feet

WINNEBAGO COUNTY

- 1
- 2
- 3
- 4
- 5
- 6
- 7
- 8
- 9
- 10
- 11
- 12
- 13
- 14
- 15
- 16
- 17
- 18
- 19
- 20
- 21
- 22
- 23

2016 Mobile Device Refresh

Our 2yr contract with US Cellular will expire in September of this year and once again we will be upgrading all mobile devices for those users with a County issued phone.

We have elected to keep all critical *data* devices used by the Sheriff Squads and County Clerk Voting System on the Verizon network both for better coverage and separation of providers in the event of a disaster.

The County currently has **218** active US Cellular lines in which **87** are iPhones. The majority of the iPhone users are from the Sheriff's Office and Public Health.

The total monthly cost paid to US Cellular averages around \$4700.00.

The **LG Envoy III basic flip** phone is our **FREE** option.

The **iPhone SE 16 GB for \$.01** will be our standard smartphone option. (Similar in size to the iPhone 5S)

Listed below is the purchase price for other models.

<http://www.apple.com/iphone/compare/>

• iPhone SE	16GB	\$.01	(4" display)
• iPhone SE	64GB	\$75.25	(4" display)
• iPhone 6	16GB	\$99.99	(4.7" display)
• iPhone 6	64GB	\$187.75	(4.7" display)
• iPhone 6+	16GB	\$187.75	(5.5" display)
• iPhone 6S	16GB	\$187.75	(4.7" display)
• iPhone 6S+	16GB	\$262.75	(5.5" display)

Contract Terms:

The Contract terms and conditions have not changed from our previous 2yr contract with US Cellular.

This contract has been negotiated with the state, so no changes can be made to it.

- Term: 2 years
- Monthly rate plan \$.00/mo.
- Incoming/Outgoing calls \$.05/min
- Data Plan for smartphone \$24.95/mo.
- Pay as you Go Text option \$.10/per text
 - Unlimited incoming texts – FREE
- Lines can be added anytime during the 2yr contract IF activated on County owned equipment.
 - If the line received NEW equipment at a discounted rate (Free or \$.01) the line begins a new contract of 24 months for the purpose of getting the discount.
 - If a phone is damaged, we have spare phones in our inventory that can be activated to avoid any changes to the contract terms for that individual line.
 - We can deactivate a line within the first 6 months at no charge.

US Cellular Service:

- A Survey sent to our users revealed the majority overall were happy with US Cellular. A small number did experience dropped calls, missed calls, connectivity issues and delayed Voicemails. There is a known “sketchy” spot on the West side of Winnebago County near Omro and Freemont in which some of these issues were experienced.

US Cellular Contract Language:

-
- *Under this Agreement, all lines will be under contract for a period of twenty-four months from the date of execution of this Agreement. All lines will have coterminous end dates. If Winnebago County should cancel its service before the expiration of this Agreement, or should elect not to renew its service with U.S. Cellular upon expiration of the Agreement, any lines that received equipment discounts within the previous six months of service will be charged the Cost Difference for each piece of equipment. The Cost Difference is defined as the difference between what Winnebago County actually paid for the equipment and the full retail price of the equipment as defined in the Equipment Pricing Section above, or by manufacturer’s suggested retail price if the model and/or full retail price is not identified in the Equipment Pricing Section. This charge is a reimbursement and shall not be considered a penalty of any kind. This Agreement covers any lines of service added under this Agreement. The Terms and Conditions of Agreement, attached hereto and made a part of this Agreement as Exhibit A, shall control the provision of Service to the Customer.*



Proposal and Cellular Service Agreement prepared for

Winnebago County

Jill Foth

920~418~5455

Jill.foth@uscellular.com

CONFIDENTIAL

Offer Expires July 31, 2016

**Hello.**

On the following pages you'll find details of a customized wireless plan that we're recommending for your business.

As you review everything, please keep in mind a few things about U.S. Cellular®:

Our plans are flexible.

As you've discovered, with U.S. Cellular there's a wide range of options when it comes to designing a wireless plan that's right for your business. If there's anything in here that you need to change or have questions about, please let us know.

Also -- we know that in business, as in life, things change. And so you'll enjoy flexibility to make changes to your plan even after you're a customer.

We're easy to work with.

We take great pains to make sure doing business with us is as easy as possible. Our plans are easy to understand. The billing is easy to follow. And our customer service and support is there at the touch of a button.

We're competitive.

We're not afraid to go head-to-head with the big carriers. Our pricing, our special bonuses, our service and national coverage – it all adds up. You are not going to find a better, more valuable plan.

We're here for you today...and tomorrow.

As a business customer, you and every member of your team have access to a special, dedicated team of customer service and support experts.

Finally, from all of us at U.S. Cellular -- thanks again for this opportunity to earn your business.



Table of Contents

Agreement Overview.....	
Executive Summary	
Introduction to U.S. Cellular®.....	
Technology and Network.....	
Customer Benefits Overview.....	
More Customer Benefits and Features.....	
Local Service and Support Structure.....	
Recommended Rate Plans.....	
Equipment/Handset Pricing.....	
Partner Employee Discount Program.....	
Schools and Libraries Program.....	
Terms of Agreement.....	



Agreement Overview

USCC Services, LLC ("U.S. Cellular") is proud to offer this Cellular Service Agreement ("Agreement") to Winnebago County with its principal place of business at 112 Otter Street, Oshkosh, Wisconsin.

Executive Summary

Winnebago County Business Objectives

Wireless communication is essential to the overall productivity of Winnebago County. During our meeting, we identified the following as crucial to your business's future success:

- State of Wisconsin 1 year Extension
- New Handsets/Equipment

The U.S. Cellular® Solution

- Included new State approved extension
- Go through new equipment pricing



The Company

U.S. Cellular is a leader in the wireless industry. We can offer Winnebago County national coverage that we're continually expanding and improving. We support businesses with a choice of cost-effective rate plans, the hottest devices, innovative services and unmatched customer service.

Quick facts:

- **Founded:** 1983
- **Headquarters:** Chicago, Illinois
- **Customers:** 4.8 Million
- **Revenue (2015):** \$3.99 Billion
- **Associates:** 6,400
- **Network:** Fourth Generation (4G) Long Term Evolution (LTE) network, Code Division Multiple Access (CDMA)

Customer Care Centers:

- Cedar Rapids, IA
- Knoxville, TN
- Tulsa, OK
- Waukesha, WI

Investment in Local Communities

At U.S. Cellular, we believe our customers should be treated like neighbors and not numbers. That's why we strive to build a personal connection with our communities that extends beyond our business by supporting a cause that strengthens every neighborhood: education.

Annually we invest \$1 million in local elementary and secondary schools to provide a better learning experience for students and teachers. This commitment to supporting K-12 education is one way we are working to create a more rewarding wireless experience for our customers.

And our work doesn't stop there. As a company, we partner with local non-profits by matching personal donations made by our associates, providing in-kind gifts as well as supporting associate volunteerism and senior leaders on board of directors. To learn more please visit www.uscellular.com/about/community-outreach



Technology and Network

CDMA

U.S. Cellular® has chosen CDMA (Code Division Multiple Access) 1XRTT and EV-DO Rev. A as the primary technology for delivering outstanding voice and data service (technology varies by market). It is one of the most secure technologies available for wireless communication in the world today.

4G LTE™

Fourth Generation Long Term Evolution (LTE) is the latest advancement in wireless technology that significantly increases the speed and capacity of mobile networks. With a 4G LTE capable device, you can access the 4G LTE network to send and receive pictures, download music, watch videos and browse the internet at speeds up to 10 times faster than 3G.

The 4G LTE network is now available in select cities in Wisconsin, Oklahoma, Iowa, Missouri, Illinois, Texas, Washington, Oregon, Tennessee, Virginia, West Virginia, North Carolina, Maine, New Hampshire, and Vermont.



Customer Benefits Overview

Switch to U.S. Cellular® and start receiving unique benefits, including:

Plans to Fit Your Needs

Choose the national voice, messaging and Data Plan that's just right for you. All U.S. Cellular plans are backed by our reliable high-speed nationwide coverage.

Earlier Phone Upgrades

Upgrade your phone at promotional prices every 22 months.

Overage Cap

Never pay more than a fixed amount in overage charges if you exceed your monthly allotment.



More Customer Benefits and Features

Overage Protection

Helping businesses like yours get the most for your money is one of our priorities. U.S. Cellular® offers Overage Protection: you automatically receive a text alert whenever you approach your monthly limit for voice minutes and/or texts. Overage Protection is available free of charge to nearly all our customers.

Nationwide Long Distance at No Extra Charge

No long distance charges when calling anyone nationwide, including calls to Puerto Rico.

Free Incoming Calls, Texts, Pix and Video Messages

Nearly half the time you spend on your phone is free.

Call Forwarding

Transfer incoming calls to any other phone number when you're not with your wireless phone.

Call Waiting

Stay connected with one call while answering another.

Caller ID

Let's you know who's calling before you answer.

Three-Way Conference Calling

Add a third party to your current call.



Voice Mail

Our voice mail service answers calls when you can't.

International Dialing

Enjoy direct access to over 200 countries. Consult a U.S. Cellular® representative or visit uscellular.com/countrycodes for country rates and availability.

International Text Messaging

Text over 100 countries from your wireless phone. There is no extra fee for the text messages you send and incoming messages are still free. Consult a U.S. Cellular representative for country availability.

Directory Assistance

Call 411 from your wireless phone to get the phone numbers of the people and businesses you need. You can also get additional information like movie times and locations, restaurant listings and more. In addition to the Directory Assistance charge, airtime and toll charges may apply.

WPS (Wireless Priority Service)

Wireless Priority Service (WPS) provides approved organizations and emergency agencies the ability to place wireless calls when there is heavy network traffic due to a high level of activity at one time. National Security and Emergency Preparedness calls will be queued and given priority treatment to establish continuity of operations and government. Data services are not part of WPS. Customers will have to initiate a request by going to the DHS site at - <https://www.dhs.gov/wireless-priority-service-wps>

International Roaming - available in over 180 countries using select U.S. Cellular devices with your same phone number. Consult a U.S. Cellular representative for country availability, rates and device selection.

Discover the Difference

As always, you can put our network and customer service to the test risk-free for 15 days.



Local Service and Support Structure

We support our business customers with specialized teams that include some of our most experienced associates.

Dedicated Local BAM:

U.S. Cellular will provide a local Business Account Manager to assist your business account by facilitating phone training for new users, fulfilling orders, delivering or shipping equipment, answering questions regarding products and services, and other field support.

- Jill Foth
- 920~418~5455
- Jill.foth@uscellular.com

Business-to-Business Billing Support:

Winnebago County will also have access to a specialized Business-to-Business Customer Service and Billing Support Team.

Business Support: [1-800-819-9373](tel:1-800-819-9373)

Roamer Support Center:

U.S. Cellular's Roamer Support Center can assist customers when they are roaming and encountering problems placing or receiving calls.

Roamer Support Center: [1-800-819-9373](tel:1-800-819-9373)



Voice and Data Rate Details

Tax Rates

Federal Universal Service Fund per CTN \$ 0.50
Wisconsin Police & Fire Fee \$ 0.75 1st 10 CTNs
Wisconsin Police & Fire Fee \$ 0.075 for CTNs 11 and greater

State Voice Plan - Local/National

Monthly Recurring Charge \$0.00
Incoming \$ 0.05
Outgoing \$ 0.05
Toll Free \$ 0.05
Mobile to Mobile \$ 0.05
Domestic Long Distance \$ -
Intrastate Roaming \$ -
Interstate Roaming \$ -
Directory Assistance (per call) \$ 1.95
Unlimited Mobile to Mobile \$ 10.00
Unlimited CALL ME Minutes \$ 10.00

Alternate Rate Plan Discount (Does not include Belief Plans)

Percentage discount from Published Monthly Access Charge 25%
This discount excludes data products and services such as modems, tablets, and other data vertical features such as BlackBerry®, Android, and Windows Mobile®

Smartphone Data Plan

Cost Per Line Per Month for Access (5GB) \$ 24.95
Overage charge per MB \$ 0.10
Includes Full BES, Android, and Windows Mobile®

Cost Per Line Per Month for Access (2GB) \$ 25.00
Overage charge \$10/GB
Tethering (smartphone feature only) \$ 25.00 \$.49/MB

Wireless Modem/Hotspot/Tablet Data Plan

Cost Per Line Per Month for Access (5GB) \$ 40.00
Overage charge \$10/GB

Cost Per Line Per Month for Access (2GB) \$ 22.00
Overage charge \$10/GB

Text Packages

Pay As You Go Text Messaging \$ 0.10 Unlimited Incoming for Free
Text Messaging 250 \$ 4.95 250 outgoing messages included \$0.10 per message over package allotment.
Unlimited Incoming for Free
Text Messaging 750 \$ 9.95 \$ 0.10 750 outgoing messages included \$0.10 per message over package allotment.
Unlimited Incoming for Free
Unlimited Text Messaging \$ 14.95 Unlimited Messaging
Unlimited Family Text Messaging \$ 19.95 Unlimited Messaging
Unlimited TXT/PIX-VID Messaging \$ 19.95 Unlimited Messaging



Equipment/Handset Pricing

Winnebago County will receive discounted equipment pricing that U.S. Cellular® will offer with a two-year service contract. The discounted pricing listed below applies to all new activations and eligible equipment upgrades.**

These handsets include a wall charger and earbuds.
U.S. Cellular reserves the right to substitute comparable models based on manufacturer's availability.

Accessories shall be discounted 25% off of listed retail price.

**Lines of service on which the phone handset was purchased at least 22 months previously are eligible for upgrade at the discounted prices listed above.



iOS 8 delivers a simpler, faster, and more intuitive user experience with new Photos and Messages features, predictive typing with Apple's QuickType keyboard, and Family Sharing.



- The Android Operating System is fast, intuitive, and has a familiar feel due to the integration of popular Google services.
- Android is fully customizable so the customer can choose the look, feel and sounds they want
- Play Store provides access to thousands of applications
- Android provides a desktop-like browsing experience
- Android allows our customers to stay connected, informed and productive.



Wireless Broadband Service

Your mobile workforce will have a significant productivity advantage while using one of U.S. Cellular®'s wireless modems. On-the-go team members will have access to Internet-based resources, corporate applications such as customer account information, e-mail, calendars, mapping systems, online services and more. Setup is simple and U.S. Cellular® provides exceptional service and support. No learning curve and no wires means your team is up and running more efficiently right away.



The UML397 4G LTE™ Wireless Modem gives you a lightning fast wireless Internet connection on the 4G LTE network. This plug-and-play modem makes it simple and easy for you to connect and access the web on your laptop at 4G LTE speeds like never before. It connects via its swivel Type A USB port. It provides NDIS support for Microsoft® Windows® XP, Vista, Windows® 7 and Mac OS X 10.5 or higher. Its built-in data plan monitor helps you check your data usage. Additionally, it includes a Virtual Private Network (VPN) wizard for Microsoft, Nortel, SonicWall, Cisco and other VPN clients. No matter where you are, you'll be able to conveniently access your company's network, email and applications. The UML397 4G LTE Wireless Modem packs a powerful punch, making it ideal for staying connected on-the-go.

ZTE Unite™ III Mobile Hotspot



The slender and compact ZTE Unite™ III delivers lightning-fast 4G LTE™ speeds into a pocket-sized frame. The Unite III supports simultaneous connections for up to 15 Wi-Fi Enabled devices and will always keep you connected when you need it most. The vivid 2.4" touch color screen is easy to navigate, and makes connecting a breeze.



Partner Employee Discount Program

Discounted Service for Your Associates

Winnebago County's partnership with U.S. Cellular® qualifies your employees for a discount on their consumer wireless service. If PEDP requirements are met, both current and new customers employed by Winnebago County will be able to take advantage of this discount and great customer service for which U.S. Cellular is known.

Gaining access to the discount is easy. Associates simply visit uscellular.com/partner. Upon entering their name and corporate e-mail address, they will receive an e-mail with their eligible discount. They will then be prompted to continue with the process to have their discount eligibility verified. If all eligibility requirements are met, the discount will be applied within the next two bill cycles.

Requirements:

- Customer Name must maintain at least 21 lines of service during the term of this Agreement. (Changes to the number of active lines on the corporate account may disqualify employees from eligibility to the PEDP.)
- Discount will only be applied to the voice plan portion of non-Shared Data Plans and only the data portion of Shared Data Plans. (On Legacy Plans, the discount applies to the voice, messaging and data bundle.)
- Single Line Plans must have a monthly service charge of \$69.95 or greater.
- Family Plans must have a monthly service charge of \$99.95 or greater.
- Shared Data Plans require a minimum Data Plan of 4GB.
- Not eligible on Wireless Modem or Data Only Plans.



Terms of Agreement

*Under this Agreement, all lines will be under contract for a period of twenty-four months from the date of execution of this Agreement. All lines will have coterminous end dates. If Winnebago County should cancel its service before the expiration of this Agreement, or should elect not to renew its service with U.S. Cellular upon expiration of the Agreement, any lines that received equipment discounts within the previous six months of service will be charged the Cost Difference for each piece of equipment. The Cost Difference is defined as the difference between what Winnebago County actually paid for the equipment and the full retail price of the equipment as defined in the Equipment Pricing Section above, **or by manufacturer's suggested retail price if the model and/or full retail price is not identified in the Equipment Pricing Section.** This charge is a reimbursement and shall not be considered a penalty of any kind. This Agreement covers any lines of service added under this Agreement. The Terms and Conditions of Agreement, attached hereto and made a part of this Agreement as Exhibit A, shall control the provision of Service to the Customer.*

- Winnebago County **Corporate Activation Fees are Waived**
- **Early termination fees are waived**
- **Expiration Date of Contract:** Twenty-four months from date of contract signing by U.S. Cellular.

IN WITNESS WHEREOF, the parties hereto have caused this Agreement to be executed by their duly authorized representatives.

USCC Services, LLC

WINNEBAGO COUNTY

By: _____

By: _____

Name: _____

Name: _____

Title: _____

Title: _____

Date: _____

Date: _____



EXHIBIT A

TERMS AND CONDITIONS OF AGREEMENT

These are the Terms and Conditions for Service between the customer ("you") and USCC Services, LLC on behalf of its operating licensed affiliates doing business as U.S. Cellular in your Home Market, as defined below ("U.S. Cellular", "we" or "us"). "Service" refers to the telecommunication services/programs, including voice and data services, you purchase from U.S. Cellular. Your "Agreement" includes (1) these Terms and Conditions, (2) the Service Agreement ("Service Agreement") on which you applied for Service, (3) the terms and conditions (typically, but not exclusively, included in the applicable brochure or literature) applicable to each Service, and (4) if you purchase data services, the applicable terms posted at www.uscellular.com/termsandconditions.

Eligibility

You are eligible for Service only if you or your employer has a billing address within U.S. Cellular's licensed market area. If you meet the eligibility requirement only through your employment address, you may only be eligible for certain rate plans. All accounts you have with us must be kept in good standing in order to be eligible for Service. If any account is not in good standing, all accounts are subject to suspension and/or termination.

Term/Termination/Early Termination Fee

This Agreement is effective on the day we activate your Service and continues until terminated in a manner as provided below. You may terminate Service at any time by notifying U.S. Cellular. Termination by you shall be effective immediately unless you request a later termination date. A request to port your number is a request by you to terminate Service immediately. Your monthly recurring Services and the applicable charges for those monthly recurring Services shall be prorated to coincide with the termination date. Depending on the amount of Service that you have used during the month of termination, such a proration may result in you incurring overage charges. U.S. Cellular may terminate or suspend your Service at any time without notice if you fail to perform any obligations of this Agreement including the restrictions and obligations set forth in the paragraphs regarding "Use of Service" and "Payment and Due Date." U.S. Cellular may terminate or suspend your Service at any time with 30 days notice if you fail to perform any other obligations set forth in this Agreement. Additionally, U.S. Cellular may terminate this Agreement at any time without notice if we cease to provide Service in your Home Market. Upon termination for any reason, you are responsible for the payment of all charges.

Use of Service

At least 50% of your monthly voice usage for each device on your account must be used in U.S. Cellular's licensed markets. No more than 200 MB of your data usage in any month for each device on your account may be used in U.S. Cellular's non-licensed markets. The customer address, or business address for business accounts (not the billing address if different), will be deemed to be the primary place of use of Service for all devices on this account for purposes of calculating certain taxes, surcharges and fees. You agree to inform us of any changes in your customer address, or business address for business accounts, which must always be within U.S. Cellular's licensed markets. Service is furnished for your use only; you may not



resell Service to third parties. You may not use the Service for any unlawful, improper, harassing or abusive purpose or in such a way that interferes with U.S. Cellular's network, business operations, employees or customers. U.S. Cellular may, in its sole discretion, block access to certain categories of numbers (e.g., 976, 900 and international designations). We may periodically, without notice, remotely change or update your wireless devices software, applications or programming. This process may affect or erase any data you have stored on the device or any personalized settings.

Payment and Due Date

You are responsible for payment of all charges on your bill, including but not limited to telecommunications-related charges (such as monthly access, airtime, roaming, toll, long distance, directory assistance, application charges and data network usage); charges for other discretionary goods and services offered by U.S. Cellular or third parties for which we bill (such as ringtones, graphics, games, premium messaging services and other on-line content); regulatory cost recovery charges (such as Universal Service Fund, Enhanced 911 and Wireless Number Portability); surcharges; and taxes. Regulatory cost recovery fees, surcharges, and taxes are subject to change without notice. Payments are late if not received by U.S. Cellular by the due date shown on the monthly bill. We may charge a late fee of up to \$5.00 for each late payment or 1.5% a month or part thereof (18% annually or the highest rate permitted by applicable state law) for any amount not paid when due, whichever is greater. We may charge you a returned check fee for a check returned for any reason. We may charge a processing fee of up to \$5.00 on any credit balance due upon termination of Service for any reason. You agree to reimburse U.S. Cellular for its costs, including reasonable attorneys' fees, collection fees and similar expenses incurred by U.S. Cellular with respect to collection of payment (except where prohibited by law).

Coverage

You understand that Service may be interrupted or unavailable due to atmospheric or topographical conditions, governmental regulations or orders, or system capacity limitations. Representations of coverage by U.S. Cellular or its agents are not guarantees.

Lost or Stolen Phones

You are responsible for all authorized charges on your phone. If you claim unauthorized charges on account of a lost or stolen phone, you must report your phone as lost or stolen immediately so that we may investigate your claim. We will investigate any claims of unauthorized charges within 30 days. You agree to cooperate with our investigation and to submit any relevant documentation that you have such as a police report or a sworn statement. You will not be required to pay any disputed charges while we investigate. If we determine that the charges are unauthorized, we will credit your account.

Deposits

U.S. Cellular may require a deposit from you to guarantee payment of charges for Service and from time-to-time may increase the deposit based on your usage and payment history. Deposits will only be returned to you after a minimum of 12 consecutive months of satisfactory payment history. U.S. Cellular may apply deposits or payments to any charges you owe us on any account. Interest will not be paid on deposits unless required by law.



Billing Practice

Your monthly Service fee will be billed in advance and your usage charges not covered by your monthly Service fee will be billed in arrears. Each partial minute of airtime will be rounded up and billed as a full minute. You may be charged for calls that are not completed but ring longer than 59 seconds. For completed calls, you will be billed from the time you push the "send" button until you terminate your call by pushing the "end" button on your phone. "Application charges" include the non-recurring and/or monthly subscription fees incurred when you purchase data applications from us or third parties for which we bill. "Data network usage charges" are the charges for transferring data (i.e., downloading applications, accessing the Internet, etc.) rendered in units of kilobytes or megabytes. Each partial kilobyte of data transferred will be rounded up and billed as a full kilobyte. Text, Picture and Video Messaging are billed per address/recipient. You may add or remove a block on your account for third party services such as premium messaging services at no additional charge by contacting Customer Service. YOU MAY SEEK A CREDIT OR REFUND FOR ERRORS IN BILLING FOR UP TO 180 DAYS AFTER ISSUANCE TO YOU OF THE BILL ON WHICH THE ERROR IS CONTAINED BY CONTACTING U.S. CELLULAR AS PROVIDED ON YOUR BILL. YOU WILL HAVE WAIVED YOUR RIGHT TO DISPUTE THE BILL AND TO BRING, OR PARTICIPATE IN, ANY LEGAL ACTION RAISING SUCH DISPUTE IF YOU FAIL TO DISPUTE THE CHARGE ON YOUR BILL WITHIN 180 DAYS (OR AS OTHERWISE PROVIDED BY CA LAW FOR CA CUSTOMERS) AFTER THE ISSUANCE OF THE BILL. WE MAY ALSO BACK BILL YOU FOR ANY ERROR THAT RESULTS IN AN UNDERBILLING TO YOU WITHIN 180 DAYS OF THE ISSUANCE OF THE BILL THAT SHOULD HAVE REFLECTED THE UNDERBILLED CHARGE.

Billing Out of Area Calls

Billing for some calls made/received by you outside of the home U.S. Cellular switch to which your account is assigned at the time your service is established ("Home Market") may occur after the close of your regular billing cycle. Typically this occurs when you make/receive calls late in your billing cycle outside your Home Market such as when you are roaming on another carrier's network or are making/receiving calls on a U.S. Cellular network other than your Home Market. When this occurs, the minutes used, and associated charges, will be applied against your monthly calling plan in the month that the usage appears on your bill rather than the month the calls actually occurred.

Changes to Relationship

We may amend the Agreement at any time by providing notice to you. If we make Material Changes to the Agreement that you do not agree with, you may cancel your Agreement without incurring an ETF by notifying us within 30 days after notice to you of the change. "Material Changes" shall be only those changes that result in an increase to the rates that we charge you for services under your Price Plan as specified in your Service Agreement. Changes to charges permitted to be collected by any governmental authority (such as for the Universal Service Fund) or which pass through the expense of taxes imposed on the Service or which relate to other Services for which you are under no term commitment as well as other non-monetary changes to the Terms and Conditions shall not constitute Material Changes to this Agreement. If you use the Service after the 30-day period, you agree to be bound by any Material Changes.

Privacy/Acceptable Use/Copyright

U.S. Cellular strives to protect the privacy and intellectual property rights of our customers. We may collect, process and share personal information about you or



your account consistent with our privacy policy, available at www.uscellular.com, without further specific notice to you. You can also view U.S. Cellular's acceptable use and copyright policies at uscellular.com.

Credit Information

You authorize consumer reporting agencies to periodically furnish U.S. Cellular with your consumer report. You authorize U.S. Cellular to periodically disclose your account information and payment history to consumer reporting agencies.

Limits of Liability

U.S. CELLULAR'S LIABILITY REGARDING YOUR USE OF THE SERVICES OR EQUIPMENT, OR THE FAILURE OF OR INABILITY TO USE THE SERVICES OR EQUIPMENT, IS LIMITED TO THE CHARGES YOU INCUR FOR SERVICES OR EQUIPMENT DURING THE AFFECTED PERIOD. THIS MEANS U.S. CELLULAR IS NOT LIABLE FOR ANY INCIDENTAL OR CONSEQUENTIAL DAMAGES (SUCH AS LOST PROFITS OR LOST BUSINESS OPPORTUNITIES), PUNITIVE OR EXEMPLARY DAMAGES, OR ATTORNEYS' FEES.

Disclaimer of Warranties

USCC makes no warranty regarding the services, equipment or software and disclaims any implied warranty, including any warranties of merchantability, infringement or fitness for a particular purpose. USCC is not responsible for circumstances beyond its control, including without limitation, acts or omissions of others, atmospheric conditions, or acts of God. USCC does not manufacture equipment or software, and customer's only warranties and representations with respect to equipment or software are those provided by the manufacturer (with respect to which USCC has no liability whatsoever). USCC SHALL HAVE NO LIABILITY TO CUSTOMER OR ANY END USER FOR ANY PORTION OF THE SERVICE PROVIDED BY RIM, ITSELF OR THROUGH OR IN CONJUNCTION WITH USCC, OR FOR THE ACCURACY, TIMELINESS OR CONTINUED AVAILABILITY OF ANY SUCH SERVICE. USCC SHALL HAVE NO LIABILITY TO CUSTOMER OR ANY END USER FOR ANY INTELLECTUAL PROPERTY INFRINGEMENT OR MISAPPROPRIATION WITH RESPECT TO ANY ELEMENT OF THE BLACKBERRY PORTION OF THE SERVICE PROVIDED BY ANY THIRD PARTY INCLUDING, WITHOUT LIMITATION, BY RIM, THROUGH OR IN CONJUNCTION WITH USCC. IN ADDITION, WITHOUT LIMITING THE GENERALITY OF THE FOREGOING, USCC SPECIFICALLY DISCLAIMS THE SUITABILITY OF THE SERVICE FOR USE IN MISSION CRITICAL APPLICATIONS OR IN HAZARDOUS ENVIRONMENTS REQUIRING FAIL SAFE CONTROLS, INCLUDING WITHOUT LIMITATION, OPERATION OF NUCLEAR FACILITIES, AIRCRAFT NAVIGATION OR COMMUNICATION SYSTEMS, AIR TRAFFIC CONTROL AND LIFE SUPPORT OR WEAPONS SYSTEMS.

Assignment

U.S. Cellular may assign this Agreement without notice to you. You may assign this Agreement only with U.S. Cellular's consent.

Entire Agreement

This Agreement is the entire agreement between you and U.S. Cellular. This Agreement supersedes any inconsistent or additional promises made to you by any employee or agent of U.S. Cellular.

ARBITRATION

ANY CONTROVERSY OR CLAIM ARISING OUT OF OR RELATING TO THIS



AGREEMENT SHALL BE RESOLVED BY BINDING ARBITRATION AT THE REQUEST OF EITHER PARTY PURSUANT TO THE WIRELESS INDUSTRY ARBITRATION RULES AS MODIFIED BY THIS AGREEMENT AND AS ADMINISTERED BY THE AMERICAN ARBITRATION ASSOCIATION ("AAA"). WE SHALL BE FULLY RESPONSIBLE FOR FILING, ADMINISTRATION AND ARBITRATOR FEES AND WE WILL ADVANCE, OR REIMBURSE YOU FOR, ANY REASONABLE FILING, ADMINISTRATION AND ARBITRATOR FEES FOR ANY ARBITRATION INITIATED IN ACCORDANCE WITH THIS PARAGRAPH. WE WILL REIMBURSE YOU FOR YOUR REASONABLE ATTORNEYS' FEES AND COSTS IF THE ARBITRATOR AWARDS YOU AN AMOUNT EQUAL TO OR GREATER THAN THE AMOUNT YOU HAVE DEMANDED IN SUCH ARBITRATION. THE AAA SHALL ADMINISTER THE ARBITRATION AND JUDGMENT ON THE AWARD RENDERED BY THE ARBITRATOR MAY BE ENTERED IN ANY COURT HAVING JURISDICTION. BOTH PARTIES ACKNOWLEDGE THAT THIS AGREEMENT IS A TRANSACTION INVOLVING INTERSTATE COMMERCE, AND IS THEREFORE GOVERNED BY THE FEDERAL ARBITRATION ACT. BY AGREEING TO ARBITRATION, BOTH PARTIES ARE WAIVING THEIR RIGHT TO LITIGATE IN COURT INCLUDING ANY RIGHT TO A JURY TRIAL. UNLESS YOU AND WE OTHERWISE MUTUALLY AGREE, ALL HEARINGS UNDER SUCH ARBITRATION SHALL TAKE PLACE IN THE COUNTY OF YOUR BILLING ADDRESS. AT YOUR OPTION, YOU MAY BRING AN ACTION AGAINST US IN SMALL CLAIMS COURT, NOTWITHSTANDING THIS AGREEMENT. THE PARTIES AGREE THAT ALL CLAIMS, WHETHER IN ARBITRATION OR IN SMALL CLAIMS COURT, SHALL BE TREATED INDIVIDUALLY AND THERE SHALL BE NO CONSOLIDATION OF CLAIMS, CLASS ACTIONS, REPRESENTATIVE ACTIONS OR PRIVATE ATTORNEY GENERAL ACTIONS. U.S. CELLULAR EXPRESSLY REJECTS AND DOES NOT CONSENT TO ANY CONSOLIDATION OF CLAIMS OR CLASS ACTION IN THE ARBITRATION. THIS ARBITRATION AGREEMENT SURVIVES THE TERMINATION OF THIS SERVICE AGREEMENT. FOR ADDITIONAL INFORMATION ON COMMENCING ARBITRATION AND HOW THE ARBITRATION PROCESS WORKS, YOU MAY CALL THE AAA AT 800-778-7879 OR VISIT THEIR WEBSITE AT WWW.ADR.ORG.

Directory Information

U.S. Cellular does not publish directories of our customers' phone numbers nor do we provide our customers' phone numbers to third parties for publication in directories.

No Waiver; Severability

U.S. Cellular's failure to enforce any right or remedy available under this Agreement is not a waiver. If any part of this Agreement is held invalid or unenforceable, the remainder of this Agreement will remain in force.

Errors

We reserve the right to correct any errors or omissions in the Agreement.

TO THE WINNEBAGO COUNTY BOARD OF SUPERVISORS:

WHEREAS, CTH A was originally built as a concrete roadway and the original concrete is still underneath the asphalt pavement. The existence of this original concrete tends to contribute to the poor condition of the roadway, causing defects to migrate upwards to the road surface; and

WHEREAS, before reconstruction can begin, Winnebago County will need to determine how to treat the bicycle/pedestrian pathway which currently stops at Indian Point Road. Winnebago County will need to decide whether to continue the current pathway by constructing a separate pathway adjacent to the roadway, to widen and build bike/pedestrian friendly shoulders on the roadway, or to not extend the path beyond Indian Point Road; and

WHEREAS, in Spring 2016 Winnebago County was awarded \$3.3 Million by the State of Wisconsin Department of Transportation for the project to reconstruct CTH A from Indian Point to CTH GG, with Winnebago County's out-of-pocket costs to design and construct this segment, including any bicycle/pedestrian pathway, being approximately \$900,000.

NOW, THEREFORE, BE IT RESOLVED by the Winnebago County Board of Supervisors that it hereby authorizes the appropriation of \$4.2 Million for the reconstruction of CTH A from Indian Point Road to CTH GG, with the State of Wisconsin Department of Transportation to fund \$3.3 million and Winnebago County to fund the remaining \$900,000.

BE IT FURTHER RESOLVED that Winnebago County will advance its \$900,000 share from the General Fund Balance with that Balance being reimbursed with a subsequent bond issue.

Respectfully submitted by:
HIGHWAY COMMITTEE

Committee Vote: **4-0**

Respectfully submitted by:
PERSONNEL AND FINANCE COMMITTEE

Committee Vote: **4-0**

Vote Required for Passage: **Three-Fourths of Membership**

Approved by the Winnebago County Executive this day of , 2016.

Mark L Harris
Winnebago County Executive

Winnebago County Personnel & Finance Committee

Thursday August 4, 2016

CTH A Project Discussion

- The Highway Department has received an STP-Rural Project grant from DOT for the design and reconstruction of CTH A from Indian Point Road to CTH GG.
- CTH A has been improved from Indian Point to the south. The segment to the south has a separated bike/ped path on the west side.
- A number of years ago, the Department had a consulting engineer lay out a proposed project which would reconstruct/rehabilitate CTH A from Indian Point to Neenah. This project concept included a separated bike/ped path that continued up the west side and crossed over to the east south of CTH G.
- This project has been capped by DOT at \$4.2M. This is an 80%/20% program with the DOT contributing \$3.0M for construction and \$400,000 for design. The County commitment on this project is \$846,000 for both design and construction.
- The County will need to select an engineering firm to design the project. RFP's will be sent to 10 firms and the County may either select from the proposals or interview.
- The County will need to decide the scope and limits of the design, including the design the limits of the bike/ped path.
- This will be done as a "state let" project meaning that all of the State/Federal requirements will need to be met during design and construction.
- The consulting firm of Mead & Hunt did the original layout and some preliminary design of the project. It might make some sense to have Mead & Hunt revisit the work they did and work on this project going forward.
- The scope of the project will need to be firmed up during the design. What sort of intersection and how much improvement should we consider at CTH GG? The right of way limits will be greatly affected by the scope of the design and what happens with the bike/ped facility.

CTH A – Looking north from Indian Point & Bike Path



CTH A – Looking north from 500' south of CTH GG

CTH A – looking south from 750' north of CTH GG



1	2
3	4
5	6
7	8
9	10
11	12
13	14
15	16
17	18
19	20
21	22
23	24
25	26
27	28
29	30
31	32
33	34

TO THE WINNEBAGO COUNTY BOARD OF SUPERVISORS:

WHEREAS, in reciprocity, Winnebago County's Corporation Counsel has represented the City of Neenah's Police Commission regarding grievances and other matters filed with that Commission; and

WHEREAS, in the past this Agreement has allowed both municipalities to avoid considerable legal expenses.

Respectfully submitted by:

Committee Vote: **3-2**

- 1
- 2
- 3
- 4
- 5
- 6
- 7
- 8
- 9
- 10
- 11
- 12
- 13
- 14
- 15
- 16
- 17
- 18
- 19
- 20
- 21
- 22
- 23
- 24
- 25
- 26
- 27
- 28
- 29
- 30
- 31
- 32
- 33
- 34
- 35
- 36
- 37
- 38
- 39
- 40
- 41

TO THE WINNEBAGO COUNTY BOARD OF SUPERVISORS:

WHEREAS, base funding for child welfare services has not increased since 2009 when the Department of Children and Families was created; and

WHEREAS, over the past few years, the child welfare workload has increased in all counties across the State of Wisconsin; and

WHEREAS, since 2007, the number of child protective services (CPS) referrals has increased by 30%: from 55,895 in 2007 to 72,698 in 2014; and

WHEREAS, the number of children in out-of-home care has increased from 7,653 in 2011 to 8,258 in 2015; and

WHEREAS, the number of screened-in CPS reports has increased from 18,706 in 2011 to 20,384 in 2015; and

WHEREAS, between 2008 and 2015 the number of Children in Need of Protection or Services (CHIPS) petitions filed with the court has increased 12.5%; and

WHEREAS, counties are struggling to recruit and retain child welfare workers; and

WHEREAS, the stress of increasing caseloads is taking its toll on CPS workers causing many experienced child welfare workers to leave the profession; and

WHEREAS, the leading cause of these increases is the use of heroin, opiates, and methamphetamines; and

WHEREAS, it is critical that counties have the resources necessary to ensure the safety of children in every corner of the state: and

WHEREAS, counties are struggling to identify resources to increase child welfare staff, especially given the significant overmatch counties already put in the human services system.

NOW, THEREFORE, BE IT RESOLVED by the Winnebago County Board of Supervisors that it hereby requests that the State of Wisconsin, in its 2017-2019 State Biennial Budget, increase funding to counties in the Children and Family Aids Allocation to assist counties in serving the increasing number of children and families in the child welfare system.

BE IT FURTHER RESOLVED by the Winnebago County Board of Supervisors that a copy of this resolution be forwarded to Governor Scott Walker, Department of Children and Families Secretary Eloise Anderson, Department of Administration Secretary Scott Neitzel, area legislators, and the Wisconsin Counties Association.

Respectfully submitted by:

HUMAN SERVICES BOARD

Committee Vote: **8-0**

Vote Required for Passage: **Majority of Those Present**

42
43
44
45
46
47

Approved by the Winnebago County Executive this ____ day of _____, 2016.

Mark L Harris
Winnebago County Executive

CONTACT INFORMATION

Honorable Scott Walker
Governor, State of Wisconsin
115 East Capitol
Madison, WI 53702

Secretary Eloise Anderson
Wisconsin Department of Children and Families
201 East Washington Avenue, Second Floor
P.O. Box 8916
Madison, WI 53708-8916

Secretary Scott Neitzel
Wisconsin Department of Administration
101 E. Wilson Street, 10th Floor
P.O. Box 7864
Madison, WI 53707
DOASecretarysOffice@wisconsin.gov

Wisconsin Counties Association
Attn: Sarah Diedrick-Kasdorf
22 E. Mifflin Street, Suite 900
Madison, WI 53703
diedrick@wicounties.org

Area Legislators:

Honorable (First Name) (Last Name)
Wisconsin State Senate
P.O. Box 7882
Madison, WI 53707-7882

Honorable (First Name) (Last Name A-L)
Wisconsin State Assembly
P.O. Box 8952
Madison, WI 53708

Honorable (First Name) (Last Name M-Z)
Wisconsin State Assembly
P.O. Box 8953
Madison, WI 53708

- 1
- 2
- 3
- 4
- 5
- 6
- 7
- 8
- 9
- 10
- 11
- 12
- 13
- 14
- 15
- 16
- 17
- 18
- 19
- 20
- 21
- 22
- 23
- 24
- 25
- 26
- 27
- 28
- 29
- 30
- 31
- 32
- 33
- 34
- 35
- 36
- 37
- 38
- 39
- 40
- 41
- 42
- 43

TO THE WINNEBAGO COUNTY BOARD OF SUPERVISORS:

WHEREAS, the Winnebago County UW-Extension Department provides a direct link to university research and resources that are used on a daily basis; and

WHEREAS, Winnebago County is committed to maintaining funding for the UW Extension office in 2017; and

WHEREAS, Winnebago County desires greater involvement in the final decisions regarding the multi-county unit, staffing, and programming; and

NOW, THEREFORE, BE IT RESOLVED by the Winnebago County Board of Supervisors that it hereby directs Chancellor Sandeen and the UW Extension Administration to re-examine and determine what impact the proposed nEXT Generation Model and its multi-county unit that includes Winnebago County will have on programming and outreach.

BE IT FURTHER RESOLVED by the Winnebago County Board of Supervisors that fiscal and programmatic changes of the reorganization be examined for long-term impact to UW Extension programs and services.

Respectfully submitted by:

Committee Vote: **4-0**

Resolution Number: 053-92016

44
45
46
47
48
49
50

Approved by the Winnebago County Executive this ____ day of _____, 2016.

Mark L Harris
Winnebago County Executive

1
2
3
4
5
6
7
8
9
10
11
12
13
14
15
16
17
18
19
20
21
22
23
24

TO THE WINNEBAGO COUNTY BOARD OF SUPERVISORS:

NOW, THEREFORE, BE IT RESOLVED by the Winnebago County Board of Supervisors that it hereby requests that the Winnebago County Executive re-offer the original 2016 contract renewal proposal to Impact Motorsports LLC, and provide 10 business days for Impact Motorsports LLC to accept and sign the proposed contract.

Paul Eisen, District 4

Vote Required for Passage: **Majority of Those Present**

Approved by the Winnebago County Executive this _____ day of _____, 2016.

Mark L Harris
Winnebago County Executive

- 1
- 2
- 3
- 4
- 5
- 6
- 7
- 8
- 9
- 10
- 11
- 12
- 13
- 14
- 15
- 16
- 17
- 18
- 19
- 20
- 21
- 22
- 23
- 24
- 25
- 26
- 27
- 28
- 29
- 30
- 31
- 32
- 33
- 34
- 35
- 36
- 37
- 38
- 39
- 40
- 41
- 42
- 43

TO THE WINNEBAGO COUNTY BOARD OF SUPERVISORS:

WHEREAS, such rules and regulations are currently contained in Chapter 27 of the General Code of Winnebago County; and

WHEREAS, the Planning and Zoning Committee of the Winnebago County Board of Supervisors has determined that it is desirable to amend such rules and regulations; and

WHEREAS, the Planning and Zoning Committee conducted a public hearing on August 30, 2016, at the Winnebago County Courthouse to accept public input regarding the proposed ordinance; and

WHEREAS, the Winnebago County Board of Supervisors considered the ordinance as recommended by the Planning and Zoning Committee at its September 20, 2016, meeting.

That Chapter 27 of the General Code of Winnebago County is hereby repealed and recreated to read as in Exhibit A, attached to this Ordinance and made a part of this Ordinance as if fully set forth at length.

BE IT FURTHER ORDAINED by the Winnebago County Board of Supervisors that any sections of this

Note: This Ordinance shall be in full force and effect upon publication of this Ordinance as of the date following its date of publication.

PLANNING AND ZONING COMMITTEE

Vote Required for Passage: **Majority of Those Present**

44
45
46
47
48
49
50

Approved by the Winnebago County Executive this _____ day of _____, 2016.

Mark L Harris
Winnebago County Executive



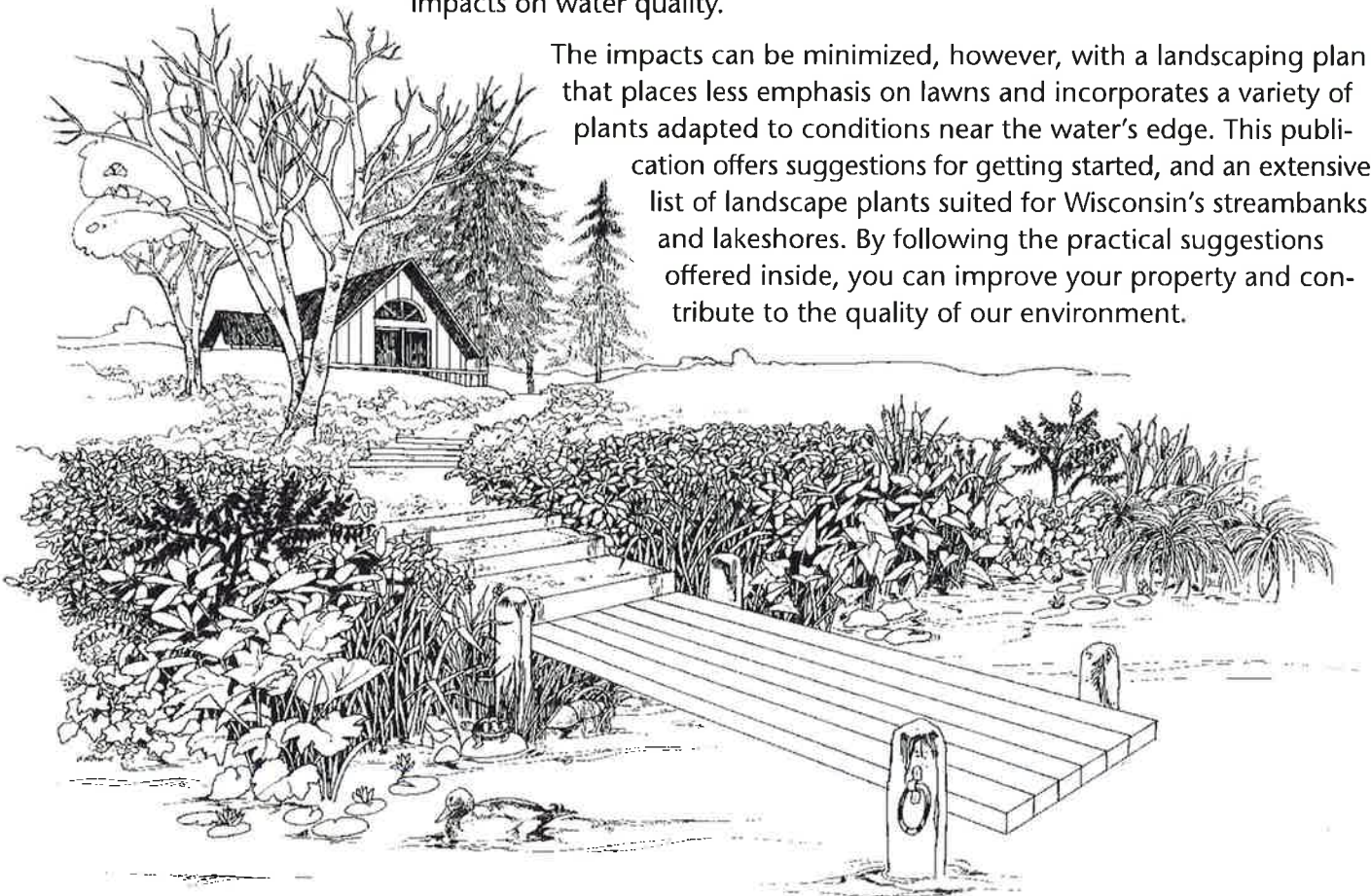
Shoreline Plants and Landscaping

A SERIES OF WATER QUALITY FACT SHEETS FOR RESIDENTIAL AREAS

Wisconsin's lakes and streams offer an escape for residents and visitors alike. From northwoods flowages to southeastern glacial lakes laced throughout the state, our waters provide abundant recreational opportunities, as well as a chance to simply get away from the sights and sounds of an urbanizing society.

The escape has become so popular that many lakeshores and streambanks are now growing more houses than trees, often with more consequences than meet the eye. Soil exposed during construction can wash into the water, and the development itself permanently alters a portion of the natural landscape. Buildings and access drives replace vegetation, increasing the amount of storm water runoff and pollutants entering the lake or stream. Owners of the new home often bring with them traditional landscaping ideas centered on the conventional yard. Too often that means manicured lawns extending to the water's edge, along with the fertilizer and pesticide applications that are the norm in the cities and villages left behind. Over time, and combined with other sources of pollution, shoreline development can have profound impacts on water quality.

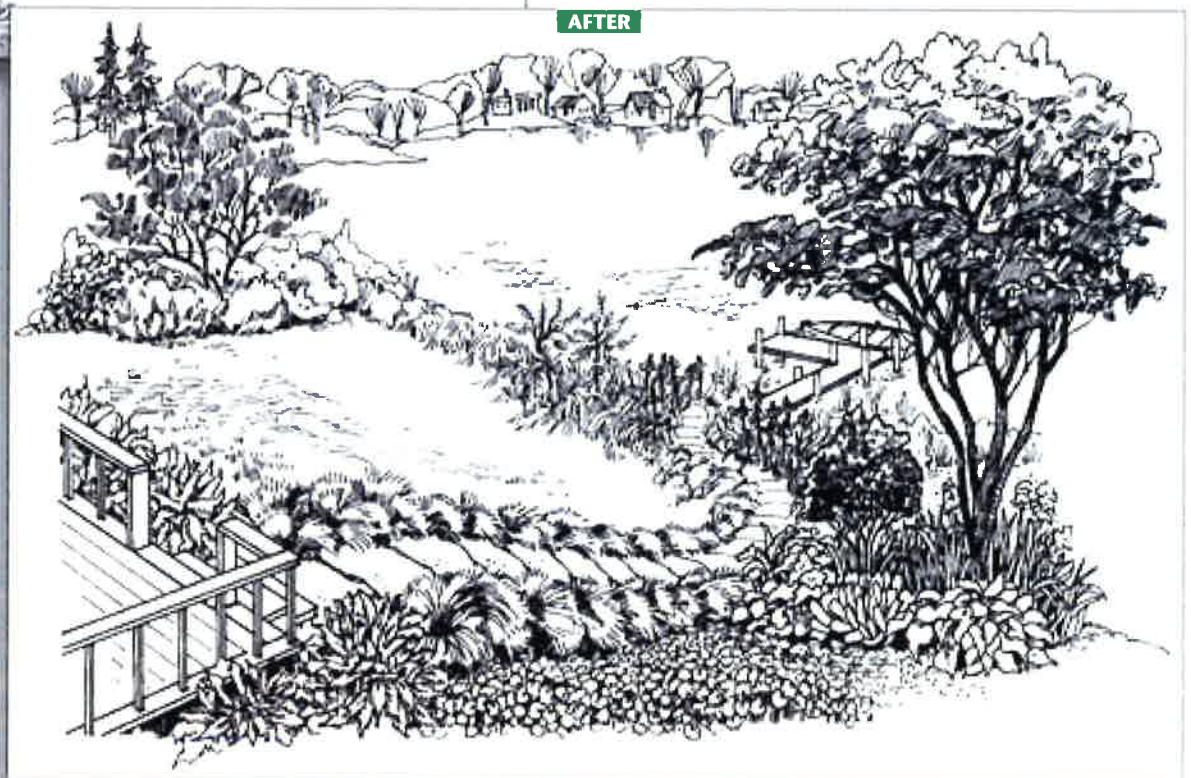
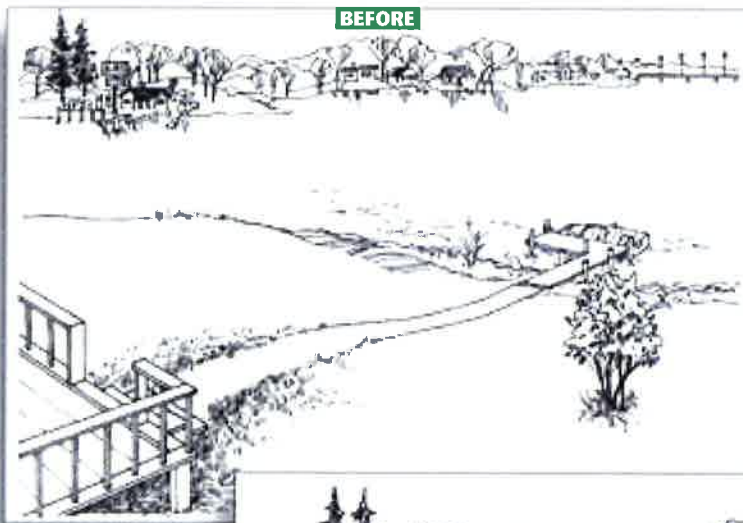
The impacts can be minimized, however, with a landscaping plan that places less emphasis on lawns and incorporates a variety of plants adapted to conditions near the water's edge. This publication offers suggestions for getting started, and an extensive list of landscape plants suited for Wisconsin's streambanks and lakeshores. By following the practical suggestions offered inside, you can improve your property and contribute to the quality of our environment.



BEFORE & AFTER: ALTERNATIVES TO THE TRADITIONAL LAWN

Grass planted to the water's edge (top illustration) is seldom the best choice, from either an esthetic or water quality standpoint. Why not try an alternative (bottom illustration)? Substituting a variety of plants for at least parts of the lawn has numerous advantages:

- ✓ Screens undesirable views while framing good ones.
- ✓ Reduces the time spent on lawn maintenance and reliance on fertilizers and other lawn chemicals.
- ✓ Helps filter pollutants that wash off roofs, driveways and other hard surfaces.
- ✓ Preserves the natural appearance of the shoreline.
- ✓ Offers better protection against shoreline erosion and requires less formal repair.
- ✓ Provides increased diversity and improved habitat for wildlife.



GETTING STARTED – LANDSCAPING AND PLANT SELECTION

Protecting the Water During Construction

With development comes bare soil, but careful planning can minimize erosion and the resulting water quality problems.

- The further the construction site is from the lake or stream and the less ground that is disturbed, the better for water quality. Greater setbacks from the water can also help overcome site limitations such as wet soils or steep slopes.
- Indiscriminate removal of trees during construction promotes soil erosion and is also a questionable practice from the standpoint of property values. A better alternative is to carefully trim trees to frame views of the lake and screen undesirable views.
- During construction, use filter fabric fences or straw bales as temporary sediment barriers along the shoreline.
- Immediately after construction of any soil-disturbing activity, the soil should be seeded, sodded or planted to natural vegetation and mulched. Once established, the vegetation becomes a permanent sediment filter. A fact sheet on Lawn Establishment (A3434) is available from county UW-Extension offices.

Landscaping for Established Yards

Proper landscape design and selection of plant material can greatly reduce the effects of shoreline development on water quality. Lawns groomed right up to the water's edge can be redesigned to allow a buffer zone along the lake or stream. Banks can be planted to stabilize the soil and eliminate lawn mowing and fertilizing.

Treatments can vary from low-cost, limited alterations to moderate-cost, significant changes. The specific treatment chosen depends on the site and desires of the property owner, but here are a few basics:

- Leaving a 35-foot (or wider) buffer of unmowed turf along shorelines is the first step in reducing runoff of soil, fertilizer and pesticides. The grasses

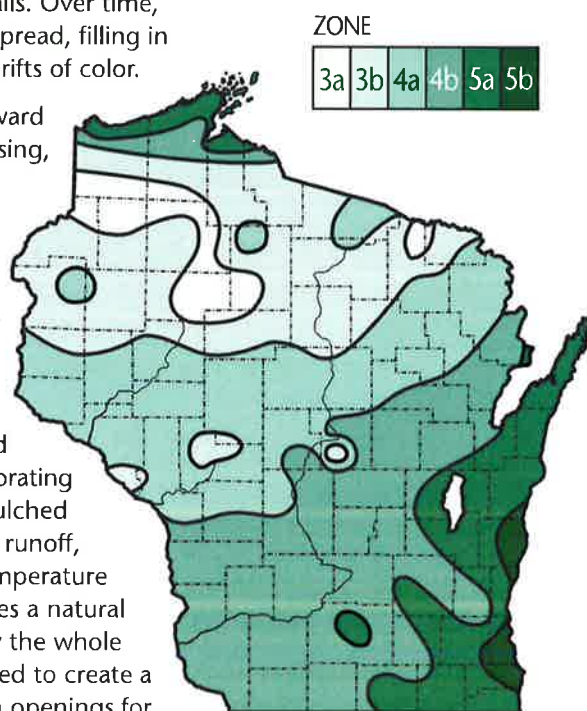
will grow 12-24" tall before going to seed. Mow the buffer zone's inland edge along a natural-looking curve. Also, use a smooth-flowing curve when mowing pathways through the buffer zone to the water's edge.

- Planting appropriate bulbs, perennial flowers, and groundcovers in the grasses of a buffer zone will add seasonal diversity. Working up small areas and mulching around new plantings will reduce competition from the grasses and reduce runoff of rainfall or melting snow.
- Native plants are best adapted to Wisconsin's climate and blend in well with the natural shoreline landscape.
- Planted through the grass in the buffer zone, native flowers can provide an ever-changing foreground to the view of the water. The buffer zone can be planted to native shore plants and prairie by gradually working up small areas (to reduce potential erosion) and seeding or transplanting shallow water plants or wet prairie grasses and forbs. UW-Extension's Prairie Primer (G2736) provides prairie restoration and maintenance details. Over time, the native plants will spread, filling in the buffer zone with drifts of color.

- Although the view toward the water is often pleasing, there may be visual elements that are unappealing. The noise of lake activities may also be disruptive. Trees and shrubs in the buffer zone can frame good views, screen poor views, and reduce sounds. Incorporating trees and shrubs in mulched planting beds reduces runoff, improves moisture/temperature conditions and provides a natural appearance. Gradually the whole shoreline can be planted to create a woodland setting with openings for visual and physical access to the water.

LANDSCAPE PLANT HARDINESS ZONES:

When selecting shoreline landscape plants from the list that follows, be sure they are identified as hardy for your area. While some plants may survive in a sheltered spot north of their recommended zone, it is usually best to plant reliable hardy species.



A Guide to Shoreline Landscape Plants

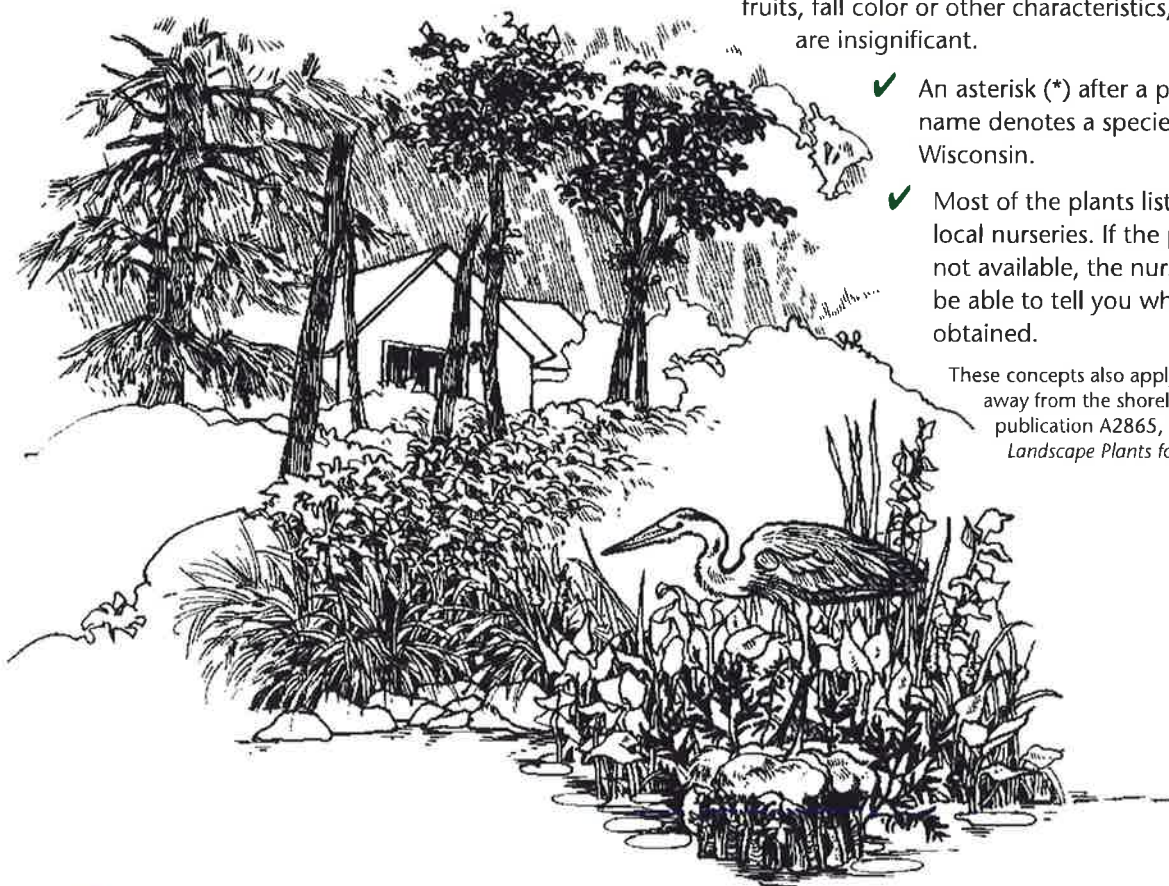
The list of plants on the following pages includes most of the better ornamental plant species and cultivars (cultivated varieties) that are usually available for sale in Wisconsin. The list includes the botanical and common names of recommended plants, growth rate (F = fast, M = medium, S = slow), hardiness zone and plant characteristics. When selecting plants, please keep the following points in mind:

- ✓ Wisconsin is divided into six zones based on minimum winter temperatures. (See map on previous page.) Always try to select plants that are hardy in your area.
- ✓ Be sure to review all the plant characteristics before you select trees, shrubs and ground covers for your situation. Many plants are sensitive to poorly drained soil conditions. Use only species tolerant of poor drainage in low, wet spots. Where shade is indicated as one of the plant characteristics, it refers to tolerance, not a requirement for shade.
- ✓ When selecting plants, one often tends to consider the flower display first. However, it is also important to consider the year-round interest the plant will provide in the landscape. Remember that a flower display often lasts only a week or two, while other interesting features such as the bark or fruits may be noticeable for several months. Where the list includes no mention of flowers, fruits, fall color or other characteristics, those features are insignificant.

✓ An asterisk (*) after a plant's botanical name denotes a species native to Wisconsin.

✓ Most of the plants listed are available at local nurseries. If the plant you desire is not available, the nursery dealer should be able to tell you where it can be obtained.

These concepts also apply to landscape plants away from the shoreline. Refer to Extension publication A2865, *A Guide to Selecting Landscape Plants for Wisconsin*.



— Evergreen Trees

The evergreen trees and shrubs listed on this page are recommended because they generally do well in moist or wet soil conditions. Some do best in sun; others do best in partial or full shade.

PLANT NAMES		GROWTH RATE	HARDINESS ZONE	PLANT CHARACTERISTICS
botanical	common			
<i>Picea glauca</i> *	White Spruce	M	3a	Moist soil; sun. Insignificant flowers; fruits are 2" cones; 70' height; light green foliage.
<i>Pinus strobus</i> *	Eastern White Pine	M	3a	Moist soil; sun. Insignificant flowers; fruits are 5-8" cones; 75' height; picturesque; soft, green foliage; subject to blister rust.
<i>Thuja occidentalis</i> *	American Arborvitae	M	3a	Moist soil; partial shade. Insignificant flowers; fruits are ½" cones; 40' height; light green, soft, scale-like foliage.
<i>Thuja occidentalis</i> 'Techny'	Techny American Arborvitae	S	3b	Moist soil; partial shade. Insignificant flowers; fruits are ½" cones; 20' height; deep green foliage.
<i>Tsuga canadensis</i> *	Canadian Hemlock	M	3a	Moist soil; shade. Insignificant flowers; fruits are ¼" cones; 75' height; soft, feathery foliage.



— Evergreen Shrubs

PLANT NAMES		GROWTH RATE	HARDINESS ZONE	PLANT CHARACTERISTICS
botanical	common			
<i>Juniperus chinensis</i> 'Pfitzerana'	Pfitzer Juniper	F	4a	Dry soil; sun. No flowers or fruits; 6' height; wide spreading; green foliage.
<i>Juniperus chinensis procumbens</i>	Japanese Garden Juniper	M	4b	Dry soil; sun. No flowers or fruits; 18" height; creeping; blue-green foliage.
<i>Juniperus communis depressa</i> *	Oldfield Common Juniper	M	3a	Dry soil; sun. Insignificant flowers; light green fruits; 4' height; spreading; light green foliage.
<i>Juniperus horizontalis</i> *	Creeping Juniper	M	3a	Dry soil; sun. Insignificant flowers; light green to silvery fruit; 4"-18" height; creeping; gray-green to blue-green foliage.
<i>Taxus cuspidata</i> 'Espansa'	Spreading Japanese Yew	M	4b	Moist soil; shade. Insignificant flowers; fruits; 6' height; spreading; dark green foliage.
<i>Thuja occidentalis</i> 'Hetz Midget'	Hetz Midget Arborvitae	S	3a	Moist soil; half-shade. Insignificant flowers; fruits; 18" height; globe; bright green foliage.
<i>Thuja occidentalis</i> 'Woodwardii'	Woodward Globe Arborvitae	M	3a	Moist soil; half-shade. Insignificant flowers and fruits; 6' height; globe; bright green foliage.



— Deciduous Trees

The deciduous trees and shrubs recommended here generally do well in moist or wet soil conditions. Some do best in sun, others do best in partial or full shade.

TALL DECIDUOUS TREES (40-100' HEIGHT)

PLANT NAMES		GROWTH RATE	HARDINESS ZONE	PLANT CHARACTERISTICS
botanical	common			
<i>Acer rubrum</i> *	Red Maple	F	3a	Moist, acid soil; tolerates poor drainage; sun to semi-shade. Red flowers; fruits are winged samaras; yellow, orange, or red fall color; salt sensitive.
<i>Acer saccharinum</i> *	Silver Maple	F	3a	Moist soil; tolerates poor drainage; sun. Red flowers; fruits are winged samaras; yellowish or no fall color; competitive roots; weak wooded.
<i>Acer saccharum</i> *	Sugar Maple	M	3a	Rich, moist soil; shade. Yellow flowers; fruits are winged samaras; yellow, orange, or red fall color; salt and stress sensitive.
<i>Fraxinus americana</i> *	White Ash	M	3a	Moist soil; tolerates poor drainage; sun. Insignificant flowers; fruits are winged samaras; orange to purple fall color; dioecious (male and female plants).
<i>Fraxinus pennsylvanica</i> *	Green Ash	F	3a	Dry to wet soil; tolerates poor drainage; sun. Insignificant flowers; fruits are winged samaras; yellow fall color; salt tolerant; weak wooded.
<i>Gleditsia triacanthos</i> *	Common Honeylocust	F	4a	Moist soil; tolerates poor drainage; sun. Dioecious; insignificant flowers; female produces seed pods; yellow fall color; thorns; salt tolerant.
<i>Quercus bicolor</i> *	Swamp White Oak	S	4a	Moist to wet soil; tolerates poor drainage; sun. Insignificant flowers; fruits are acorns; no fall color.
<i>Tilia americana</i> *	Basswood	M	3a	Rich, moist soil; sun or shade. Fragrant, tiny white flowers in early summer; nut-like pea-sized fruits; yellowish or no fall color; salt sensitive.



MEDIUM DECIDUOUS TREES (30-40' HEIGHT)

PLANT NAMES		GROWTH RATE	HARDINESS ZONE	PLANT CHARACTERISTICS
botanical	common			
<i>Alnus glutinosa</i>	European Alder	F	4a	Wet soil; tolerates poor drainage; sun to partial shade. Catkins; cone-like fruits; no fall color.
<i>Betula nigra</i> *	River Birch	M	4b	Wet to dry acid soil; tolerates poor drainage; sun. Catkins; small, cone-like fruits; yellow fall color; cinnamon-colored, peeling bark
<i>Betula platyphylla japonica</i> 'Whitespire'	Whitespire Birch	M	3a	Moderate soils; tolerates hot sites; sun. Catkins; small cone-like fruits; yellow fall color; resistant to bronze birch borer.
<i>Ostrya virginiana</i> *	Ironwood	S	3b	Dry to moist soil; shade. Catkins; hop-like fruits; yellowish fall color; elm-like leaves.

LOW DECIDUOUS TREES (15-30' HEIGHT)

PLANT NAMES		GROWTH RATE	HARDINESS ZONE	PLANT CHARACTERISTICS
botanical	common			
<i>Alnus rugosa</i> *	Speckled Alder	M	4a	Wet soil; tolerates poor drainage; sun. Catkins; small, cone-like fruits; no fall color.
<i>Amelanchier laevis</i> *	Allegheny Serviceberry	S	3a	Moist soil; partial shade. White flowers; edible red to blue-black fruits; orange to red fall color.
<i>Carpinus caroliniana</i> *	American Hornbeam	S	3b	Moist soil; shade. Catkins; fruits are small nutlets; orange fall color; smooth gray muscle-like trunk.
<i>Cornus alternifolia</i> *	Pagoda Dogwood	M	3a	Cool, moist soil; shade. White flowers; blue-black fruits on red stalks; maroon fall color.
<i>Crataegus species</i> *	Hawthorns	M	4a	Dry to moist soils; sun. White flowers; red fruits; yellow to orange fall color; thorns.
<i>Salix pentandra</i>	Laurel Willow	M	3a	Wet soil; sun. Catkins; insignificant fruits; yellowish fall color; dense habit.



— Deciduous Shrubs

These deciduous shrubs are recommended because they generally do well in moist or wet soil conditions. Some do best in sun, others do best in partial or full shade.

TALL DECIDUOUS SHRUBS (8-14' HEIGHT, PLANT 5-7' APART)

PLANT NAMES		GROWTH RATE	HARDINESS ZONE	PLANT CHARACTERISTICS
botanical	common			
<i>Cornus racemosa</i> *	Gray Dogwood	F	3a	Dry to wet soil; partial shade to shade. White flowers; white fruits; purple fall color.
<i>Cornus sericea</i> *	Redosier Dogwood	F	3a	Moist to wet soil; tolerates poor drainage; sun. White flowers; white fruits; red twigs; purple leaves in fall.
<i>Euonymus atropurpurea</i> *	Eastern Wahoo	F	4b	Moist soil; shade. Tiny purplish flowers; bittersweet fruits; orange to purple fall color.
<i>Hamamelis virginiana</i> *	Common Witchhazel	F	4a	Moist soil; shade. Yellow flowers in October; insignificant fruits; yellow fall color.
<i>Physocarpus opulifolius</i> *	Eastern Ninebark	F	3a	Dry to moist soil, partial shade. White flowers; red, capsular fruits; yellowish fall color; shredded bark.
<i>Viburnum dentatum</i>	Arrowwood Viburnum	F	4a	Moist soil; shade. White flowers; blue fruits; maroon fall color.
<i>Viburnum lentago</i> *	Nannyberry Viburnum	F	3a	Dry to moist soil; sun or shade. White flowers; black fruits; maroon fall color.
<i>Viburnum prunifolium</i> *	Blackhaw Viburnum	F	4a	Dry to moist soil; partial shade. White flowers; black fruits; maroon fall color.
<i>Viburnum trilobum</i> *	Cranberrybush Viburnum	F	3a	Moist soil; shade. Lacy, white flowers; persistent, edible red fruits; maroon fall color.



MEDIUM DECIDUOUS SHRUBS (5-8' HEIGHT, PLANT 3-4' APART)

PLANT NAMES		GROWTH RATE	HARDINESS ZONE	PLANT CHARACTERISTICS
botanical	common			
<i>Aronia arbutifolia</i>	Red Chokeberry	F	4b	Wet soil; tolerates poor drainage; shade. White flowers; red fruits; red fall color.
<i>Corylus americana</i> *	American Filbert (Hazelnut)	M	3a	Dry soil; shade. Catkins; fruits are hazelnuts; orange fall color.
<i>Ilex verticillata</i> *	Winterberry	F	4a	Wet, acid soil; tolerates poor drainage; sun to partial shade. Dioecious; red fruits; yellowish fall color.
<i>Viburnum cassinoides</i> *	Withrod Viburnum	M	4a	Wet, acid soil; tolerates poor drainage; partial sun to shade. White flowers; pink-to-red-to-blue fruits; red fall color.

LOW DECIDUOUS SHRUBS (2-5' HEIGHT, PLANT 2½' APART)

PLANT NAMES		GROWTH RATE	HARDINESS ZONE	PLANT CHARACTERISTICS
botanical	common			
<i>Amelanchier stolonifera</i> *	Running Serviceberry	M	3a	Dry soil; shade. White flowers; edible red fruits; orange fall color; suckering habit.
<i>Aronia melanocarpa</i> *	Black Chokeberry	M	3b	Wet soil; shade. White flowers; black fruits red fall color.
<i>Rhododendron</i> x 'PJM'	PJM Hybrid Rhododendron	S	4a	Moist, acid soil; sun. Lavender flowers; insignificant fruits; evergreen leaves turn purple in fall.
<i>Ribes alpinum</i>	Alpine Currant	F	3a	Dry to moist soil; partial sun to shade. Insignificant flowers and fruits; yellowish fall color; good hedge plant.
<i>Spirea japonica</i> Little Princess	Little Princess Spirea	M	4a	Dry to moist soil; sun. Pale pink flowers; insignificant fruits; yellowish fall color; compact habit.
<i>Viburnum acerifolium</i> *	Mapleleaf Viburnum	M	3a	Moist soil; shade. White flowers; black fruits; maroon fall color.
<i>Viburnum opulus</i> 'Nanum'	Dwarf European Cranberrybush	M	3a	Moist soil; shade. No flowers or fruits; maroon fall color; twiggy.



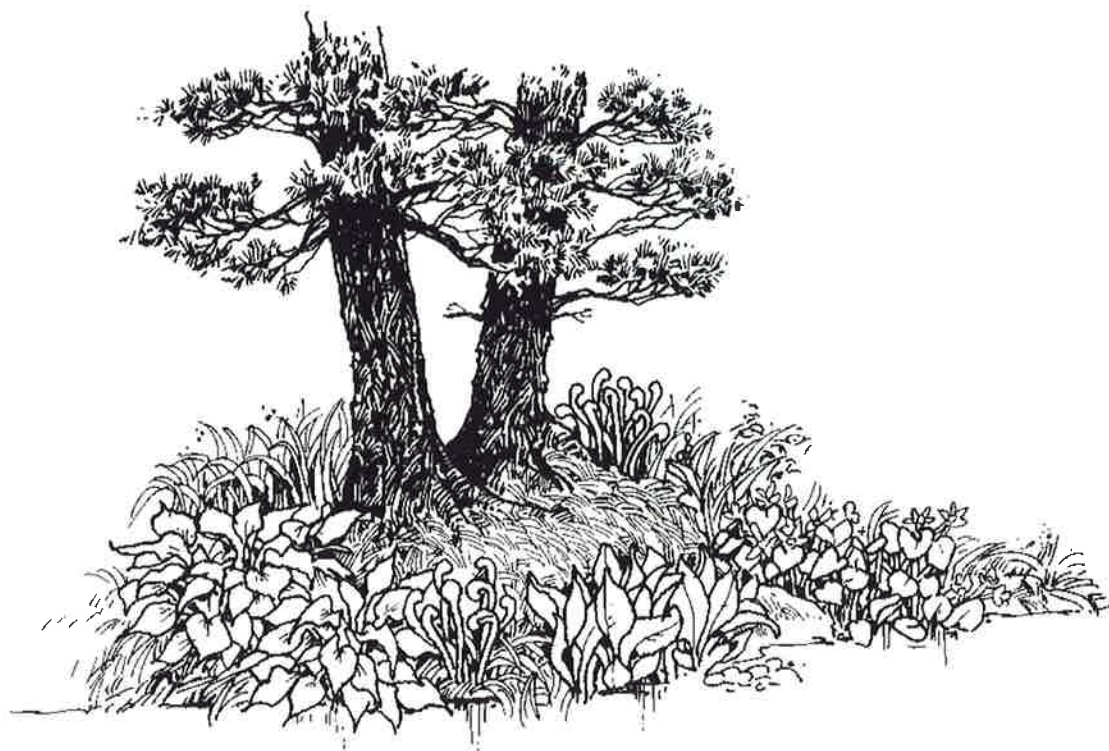
Wet Forest Groundlayer Plants

After a shade pattern is established by trees and shrubs, these plants can be incorporated in the ground layer.

PLANT NAMES		GROWTH RATE	HARDINESS ZONE	PLANT CHARACTERISTICS
botanical	common			
<i>Amphicarpa bracteata</i> *	Hog Peanut	—	3a	Moist soil; shade. Pea-like lilac flowers in late summer; fleshy one-seeded fruit pods; delicate twining vine.
<i>Arisaema dracontium</i> *	Green Dragon	—	4a	Moist soil; shade. Green flowers in spring; insignificant fruits; 1-4' height; leaves divided into 5-15 pointed segments.
<i>Aster lateriflorus</i> *	Calico Aster	—	3a	Moist soil; shade. White flowers with purple centers in fall; insignificant fruits; 1-4' height; coarsely toothed leaves.
<i>Caltha pulustris</i> *	Marsh Marigold (Cowslip)	—	3a	Moist soil; partial shade. Large yellow flowers in early spring; insignificant fruits; 1-2' height; glossy, roundish leaves; thick hollow stems.
<i>Geum canadense</i> *	White Avens	—	3a	Moist soil; shade. White flowers in summer; bristly seed receptacles; 1½-2½' height; lower leaves usually divided into 3's.
<i>Impatiens capensis</i> *	Spotted Jewelweed	—	3a	Wet soil; shade. Spotted orange pendulant flowers in summer; ripe seed pods pop when touched; 2-5' height; succulent, juicy stems.
<i>Matteuccia struthiopteris pennsylvanica</i> *	Ostrich Fern	—	3a	Moist soil; shade. Insignificant flowers and fruits; 4-5' height; large, coarse textured fronds.
<i>Menispermum canadense</i> *	Moonseed	—	4b	Moist soil; shade. Clusters of small white flowers in early summer; black fruits resemble grapes; woody climber; large variable leaves (nearly round to 3-7 shallow lobes).
<i>Mertensia virginica</i> *	Virginia Bluebells	—	3a	Moist soil; shade. Nodding trumpet-like blue flowers in spring; insignificant fruits; 1-2' height; smooth strongly veined, oval leaves; succulent stems.
<i>Onoclea sensibilis</i> *	Sensitive Fern	—	3a	Moist soil; shade to sun. Insignificant flowers and fruits; 1-2½' height; large leaflets on fronds.
<i>Pedicularis canadensis</i> *	Wood Betony	—	3a	Moist soil; shade. Yellow or red flowers in spring; insignificant fruits; ½ -1' height; long, soft-hairy, often reddish leaves.

(WET FOREST GROUNDLAYER PLANTS – CONTINUED)

PLANT NAMES		GROWTH RATE	HARDINESS ZONE	PLANT CHARACTERISTICS
botanical	common			
<i>Pilea pumila</i> *	Clearweed	—	3a	Moist soil; shade. Small green flowers in leaf axils in late summer; insignificant fruits; ½-1½' height; nettle-like (non-stinging) leaves; smooth translucent stems.
<i>Ranunculus septentrionalis</i> *	Swamp Buttercup	—	3a	Wet soil; shade. Yellow flowers in spring; insignificant fruit; 1-3' height; leaves in 3 segments; weak, hollow stems.
<i>Symplocarpus foetidus</i> *	Skunk Cabbage	—	3a	Wet soil; partial shade. Green/purple shell-like sheath covers green flowers in very early spring; insignificant fruit; 1-3' height; large, broad leaves appear after flowers; leaves have fetid odor if crushed.
<i>Viola pedata</i> *	Marsh Blue Violet	—	4a	Wet soil; shade. Dark violet flowers in spring; flower stems taller than leaves; insignificant fruits; ½-1' height; heart-shaped leaves.

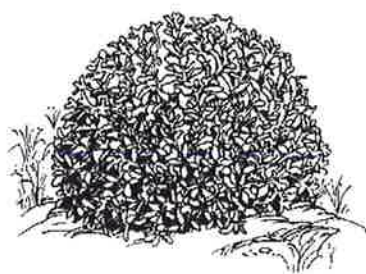


— Groundcover & Bankcover Plants

Groundcover and bankcover plants can replace conventional grasses, and the fertilizing and mowing involved.

GROUNDCOVERS

PLANT NAMES		GROWTH RATE	HARDINESS ZONE	PLANT CHARACTERISTICS
botanical	common			
<i>Ajuga reptans</i>	Bugleweed or Carpet Bugle	—	4a	Moist soil; shade. White, red, purple, or blue flowers in late spring; 4-6" height; green to purplish evergreen foliage; ground cover.
<i>Arctostaphylos uva-ursi</i> *	Bearberry	—	3a	Dry, acid soil; sun to partial shade. Small, terminal, white flowers in spring; small red berry; 6" height; paddle-shaped, evergreen leaves; trailing shrub; ground cover.
<i>Asarum canadense</i> *	Canada Wildginger	—	3a	Rich, moist soil; shade. Ground-level, cup-shaped, 3-pointed red-brown flowers in spring; 6" height; large, heart-shaped leaves; ground cover.
<i>Convallaria majalis</i>	Lily-of-the-valley	—	3a	Moist soil; shade. Fragrant white flowers in spring; 8" height; dark green foliage; ground cover.
<i>Euonymus fortunei</i> 'Colorata'	Purpleleaf Wintercreeper	—	4b	Moist soil; shade. Insignificant flowers; 6-18" height; evergreen leaves turn purple in winter; only fully hardy in SE Wisconsin, needs shelter from winter sun and wind; ground cover.
<i>Hosta</i> cultivars	Hosta or Plantainlily	—	3a	Moist soil; shade. White or lavender flowers in summer or early fall; 6-24" height; green, blue, gold and variegated leaves; ground cover.
<i>Juniperus</i> species	Juniper	—	3-4	Dry soil; sun. Insignificant flowers; some have berry-like fruits; 6-24" height; needled evergreen; ground or bank cover.
<i>Lycopodium clayatum</i> *	Running Pine	—	3a	Moist, acid soil; shade. Insignificant flowers; 2-6" height; creeping or erect stems; ground cover.
<i>Pachysandra terminalis</i>	Japanese Pachysandra	—	4b	Moist soil; shade. White flowers in summer; 6-8" height; evergreen foliage; only fully hardy in SE Wisconsin, needs shelter from winter sun and wind; ground cover.
<i>Phlox subulata</i>	Moss Phlox	—	3a	Dry, infertile soil; sun. Small clustered, pink or white flowers in spring; 6" height; needle-like, semi-evergreen leaves; ground cover.
<i>Potentilla tridentata</i> *	Wineleaf Cinquefoil	—	3a	Dry soil; sun. White flowers in early summer; 6" height; wine-red fall color; ground cover.
<i>Rhus aromatica</i> 'Gro-Low'	Gro-Low Fragrant Sumac	—	3a	Dry soil; sun. Insignificant flowers; 30" height; fragrant foliage; orange-maroon fall color; ground or bank cover.
<i>Sedum</i> species	Sedum or Stonecrop	—	3-5	Dry, infertile soil; sun. White, yellow, pink, or purple flowers in spring, summer or fall; 2-10" height; succulent plant; ground cover.



DECIDUOUS BANKCOVER SHRUBS

PLANT NAMES		GROWTH RATE	HARDINESS ZONE	PLANT CHARACTERISTICS
botanical	common			
<i>Amelanchier stolonifera</i> *	Running Serviceberry	M	3a	Dry soil; shade. White flowers; edible red fruits; 3-4' height; orange fall color; suckering habit.
<i>Cornus sericea</i> *	Redosier Dogwood	F	3a	Moist to wet soil; tolerates poor drainage; sun. White flowers; white fruits; 8' height; purple fall color; red twigs; spreading habit.
<i>Diervilla lonicera</i> *	Dwarf Bushhoneysuckle	M	3a	Dry soil; shade. Yellow flowers; insignificant fruits; 3' height; mounded habit.
<i>Rhus aromatica</i> *	Fragrant Sumac	F	3a	Dry soil; sun. Greenish-yellow flowers; red fruits; 4' height; orange-maroon fall color; fragrant foliage; mounded habit.
<i>Rosa virginiana</i>	Virginia Rose	F	4a	Moist to dry soil; sun. Pink flowers; persistent red fruits (hips); 4' height; red stems; suckering habit.
<i>Salix repens</i> var. <i>nitida</i>	Silver Creeping Willow	F	4b	Moist soil; sun. Insignificant flowers and fruits; 2' height; silvery foliage; spreading habit.
<i>Symphoricarpos orbiculatus</i>	Indiancurrant Coralberry	M	3b	Dry soil; shade. White flowers; pink fruits; 3' height; suckering habit.

EVERGREEN BANKCOVER SHRUBS

PLANT NAMES		GROWTH RATE	HARDINESS ZONE	PLANT CHARACTERISTICS
botanical	common			
<i>Juniperus chinensis</i> 'Pfitzerana'	Pfitzer Juniper	M	4a	Dry soil; sun. No flowers or fruits; 6' height; rich green foliage; wide spreading.
<i>Juniperus chinensis procumbens</i>	Japanese Garden Juniper	M	4b	Dry soil; sun. No flowers or fruits; 18" height; blue-green foliage; creeping.
<i>Juniperus communis depressa</i> *	Oldfield Common Juniper	M	3a	Dry soil; sun to partial shade. Insignificant flowers; berry-like blue-green fruits; light green foliage turns brown in winter.
<i>Juniperus horizontalis</i> *	Creeping Juniper	M	3a	Dry soil; sun. Insignificant flowers; some have berry-like fruits; variable foliage color; subject to blight disease.
<i>Juniperus Sabina</i> 'Calgary Carpet'	Calgary Carpet Savin Juniper	M	3a	Dry soil; sun. No flowers or fruits; 8" height; soft green foliage; low spreading.
<i>Taxus cuspidata</i> 'Espana'	Spreading Japanese Yew	M	4b	Dry to moist soil; shade. Insignificant flowers; red fruits; 6' height; dark green foliage; only fully hardy in SE Wisconsin.



Grasses, Forbs & Aquatics

Most aquatic plants have not been extensively studied for landscape purposes. However, landowners can help establish stable, diverse plant communities by encouraging these plants along the water's edge.

MOIST SHORE AREAS (MOIST TO WET SOILS IN FULL SUN)

PLANT NAMES		GROWTH RATE	HARDINESS ZONE	PLANT CHARACTERISTICS
botanical	common			
<i>Andropogon gerardi</i> *	Big Bluestem Grass	—	3a	Flowers/seed heads branch into three parts, looks like a turkey's foot in fall; 3-8' height; lush green leaves turn to reddish fall color; stems blue/purple; most prevalent of all prairie grasses.
<i>Asclepias incarnata</i> *	Swamp Milkweed	—	3a	Pink flowers in midsummer; 2-4' height; narrow, lance-shaped, smooth-edged leaves.
<i>Aster novae-angliae</i> *	New England Aster	—	3a	Bright violet, rose, or magenta flowers with yellow centers in late fall; 3-6' height; important late-season nectar source for a variety of butterflies.
<i>Aster simplex</i> *	Panicled Aster	—	3a	White flowers in fall; 3-6' height; short, stalked willow-like leaves.
<i>Calamagrostis canadensis</i> *	Canada Bluejoint Grass	—	3a	Typical grass flowers and seeds in fall; 2-4' height; grows in heavy clumps.
<i>Cicuta maculata</i> *	Cowbane or Water Hemlock	—	3a	White flowers in large umbel in summer; 3-6' height; twice- or thrice-compound leaves; stem streaked with purple; poisonous.
<i>Dodecatheon meadia</i> *	Shooting Star	—	3a	Pink flowers with swept-back petals in spring; 1-2' height; leaves in rosette at ground level.
<i>Eupatorium maculatum</i> *	Spotted Joe-Pye Weed	—	3a	Flat-topped clusters of pale purple flowers in late summer; 4-6' height; stem is deep purple.
<i>Galium boreale</i> *	Northern Bedstraw	—	3a	Tiny white clustered flowers in early summer; 1-3' height; narrow leaves in whorls of four.
<i>Gentiana andrewsii</i> *	Bottle Gentian	—	3a	Bright blue flowers in late fall never fully open; 1-2' height.
<i>Hypoxis hirsuta</i> *	Stargrass	—	4a	Six-pointed star-like yellow flowers in summer; 3-7" height; narrow, grass-like leaves.
<i>Iris versicolor</i> *	Blue Flag (Wild Iris)	—	3a	Showy lavender flowers in late spring; 2-3' height; graceful, sword-like leaves.
<i>Lilium superbum</i> *	Turk's-Cap Lily	—	4a	Large, nodding, bright orange flowers with maroon-spotted petals in summer; 3-6' height.
<i>Panicum virgatum</i> *	Switch Grass	—	3a	Typical grass flowers and seeds in fall; 3-6' height; can be aggressive; thick stands make good winter and early spring wildlife cover.
<i>Phlox pilosa</i> *	Downy Phlox	—	3a	Pale purple flowers in late spring; 2-3' height; narrow, pointed leaves.
<i>Pycnanthemum species</i> *	Mountain Mint	—	3a	Flat-topped, branching clusters of white flowers in late summer; 1-3' height; square stems; mint-like odor if crushed.



(MOIST SHORE AREAS – CONTINUED)

PLANT NAMES		GROWTH RATE	HARDINESS ZONE	PLANT CHARACTERISTICS
botanical	common			
<i>Rudbeckia hirta</i> *	Black-eyed Susan	—	3a	Showy, big single yellow flowers with chocolate-colored center disks in summer; 1-3' height; easy to grow.
<i>Sorghastrum nutans</i> *	Indian Grass	—	3a	Flower clusters filled with short, soft, golden-brown hairs; typical grass seed head in fall; 4-8' height; grows rapidly.
<i>Spartina pectinata</i> *	Prairie Cordgrass	—	3a	Flowers and seed heads arranged on one side of stem in fall; 3-5' height; gracefully arching narrow leaves; bright yellow fall color.
<i>Thalictrum dasycarpum</i> *	Meadowrue	—	3a	Delicate white dioecious flowers in spring; 2-5' height; lacy bluish-green leaves.
<i>Veronicastrum virginicum</i> *	Culver's Root	—	3a	White tube-like flowers in mid-summer; 2-5' height; slender, sharp-toothed leaves in whorls of 3-7.
<i>Viola cucullata</i> *	Marsh Blue Violet	—	3a	Violet flowers taller than leaves in spring; 5-10" height.
<i>Zizia aurea</i> *	Golden Alexanders	—	3a	Tiny golden flowers in spring; 1-3' height; doubly compound leaves; red-tinged stems.

SHALLOW WATER TO WET SHORE PLANTS

PLANT NAMES		GROWTH RATE	HARDINESS ZONE	PLANT CHARACTERISTICS
botanical	common			
<i>Acorus calamus</i> *	Sweet Flag	—	3a	Flowers are spadix of small greenish-yellow florets in early summer; 1-4' height; rigid, sword-like leaves; flat, blade-like stem.
<i>Phragmites communis</i> *	Giant Reed Grass	—	4a	Graceful, plumed tan flowers and fruiting heads in late summer; 8-12' height; aggressive once established.
<i>Sagittaria latifolia</i> *	Arrowhead	—	3b	White flowers in whorls of three in summer; 1-3' height; lance-like to broad, arrow-shaped leaves.
<i>Scirpus species</i> *	Bulrushes	—	3-4	Solitary or clustered spikelet flowers in summer; 6-8' height; grass-like leaves at base of plant.
<i>Sparaganium eurycarpum</i> *	Giant Bur-Reed	—	3b	Green to brown flowers; fruits are bur-like balls; 4-6' height; linear iris-like leaves.
<i>Typha latifolia</i> *	Cattail	—	3a	Brown head of tightly packed flowers; fruits are attached to fluffy, cotton-like material; 3-9' height; erect, blade-like leaves.



A FEW FINAL THOUGHTS

Some factors affecting shoreline development are beyond an individual's control. The property may have been developed and landscaped long ago; zoning code requirements may offer little flexibility for preserving vegetation on the lot; or options may be limited by surrounding properties. However, there are probably some shoreline landscaping or plant selection tips described inside that can improve both your property and water quality.

If you are proceeding with plans and permits to build, proper construction site practices are summarized in the fact sheet, *Erosion Control for Home Builders* (GWQ001), available in county UW-Extension offices.

Remember, most Wisconsin lakeshores started out being wooded, and such lots today are the ones often commanding high selling prices. If you want to maintain some conventional lawn away from the shoreline, refer to other facts sheets in the *Yard Care and the Environment* series for management suggestions.

If you have any questions about the suitability of a particular plant for your landscaping situation, contact your county UW-Extension office or a local nursery.



This publication is available from county UW-Extension offices or from Extension Publications, 630 W. Mifflin St., Madison, WI 53703. (608) 262-3346.

A publication of the University of Wisconsin–Extension in cooperation with the Wisconsin Department of Natural Resources.

Authors: Dan Wilson and Gary Korb, UW-Extension. Portions of this fact sheet adapted from *Shoreline Landscape Plants* by Thomas Wilson and Dan Wilson, UW-Extension.

Illustrations: Carol Watkins

©1999 by the Board of Regents of the University of Wisconsin System. Send inquiries about copyright permission to: Director, Cooperative Extension Publications, 201 Hiram Smith Hall, 1545 Observatory Dr., Madison, WI 53706. University of Wisconsin-Extension is an EEO/Affirmative Action employer and provides equal opportunities in employment and programming, including Title IX and ADA requirements.

Editing and design by the
Environmental Resources Center,
University of Wisconsin–Extension.



Printed on
recycled paper

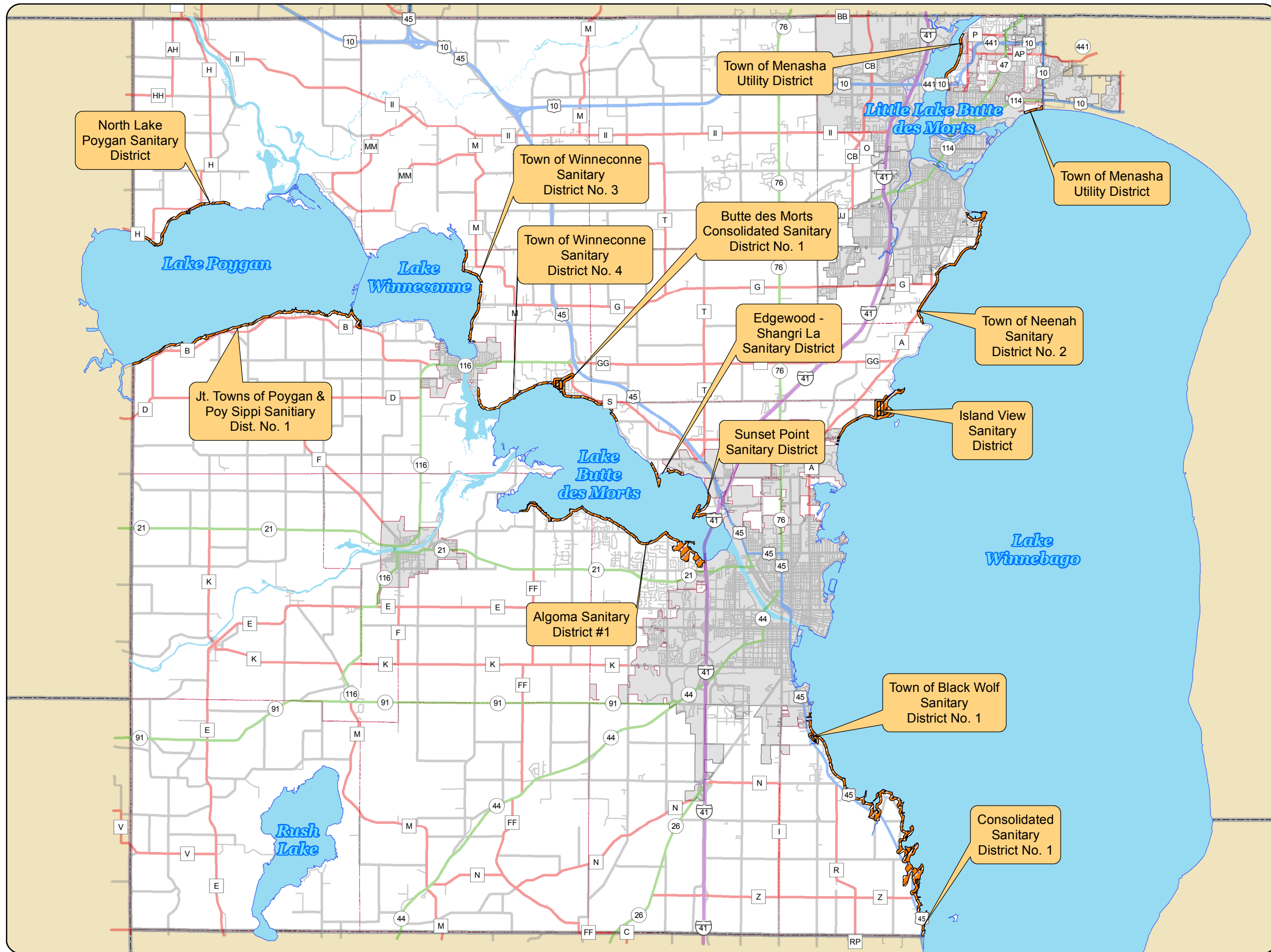
**GWQ014 Shoreline Plants
and Landscaping**

DNR WR-461-94

R-09-99-10M-30-S

**UW
Extension**





Active Sanitary Sewer Districts Map



Winnebago County, Wisconsin

Legend

- Sewered Sanitary Districts
- Lakes
- County Boundary



1 in = 2.5 miles



W.I.N.G.S. Project Disclaimer

This data was created for use by the Winnebago County Geographic Information System project. Any other use/application of this information is the responsibility of the user and such use/application is at their own risk. Winnebago County disclaims all liability regarding fitness of the information for any use other than Winnebago County business. *Data for this map copyrighted December 31, 2006*

ORDINANCE: Amend Section 5.05 of General Code of Winnebago County: Fees of Sheriff (Fees for Civil Process and Travel-Related Costs)

TO THE WINNEBAGO COUNTY BOARD OF SUPERVISORS:

WHEREAS, § 814.705(1)(a), Wis Stats, authorizes the Winnebago County Board of Supervisors to establish fees higher than that level set by State Statute for various services performed by the Winnebago County Sheriff's Department; and

WHEREAS, § 814.70, Wis Stats, authorizes the Winnebago County Sheriff's Department to collect necessary expenses incurred with respect to Writ of Restitution/Eviction proceedings; and

WHEREAS, Section 5.05(2) of the General Code of Winnebago County, which establishes fees related to service of process and evictions, was last amended in December 2005; and

WHEREAS, at this time it is appropriate to establish a new fee schedule for service of process by the Sheriff's Department and for expenses related to the time a deputy sheriff spends in removal of a tenant pursuant to Writ of Restitution in an eviction proceeding that more closely reflects the actual cost of providing that service.

NOW, THEREFORE, BE IT ORDAINED by the Winnebago County Board of Supervisors as follows:

That Section 5.05(2) of the General Code of Winnebago County is hereby amended to read as follows:

5.05 FEES OF SHERIFF

(1) **Authority:** This Ordinance is enacted pursuant to the authority provided in § 814.70 and 814.705, Wis Stats.

(2) **Fees For Civil Process And Travel Related Costs:** For the service of any summons, writ, or other process, except criminal warrants and for travel related costs related to said process service, the following fees shall be charged by the Winnebago County Sheriff's Department:

(a) Service of civil process:

Each First three (3) attempts of service of process	\$45.00 \$75.00
(including mileage)	
Actual Service	\$45.00
Plus mileage at the rate established pursuant to	
Section 3.05(4)(a)(1) of this Code.	

(b) Service of civil process on each additional ~~person~~ defendant

at the same address (up to three (3) attempts)	
(including mileage)	\$25.00 \$30.00

(c) **Additional service attempts in excess of the three (3) initial attempts**

\$30.00

~~(d)~~ (d) Service of civil process accomplished at the Winnebago County Sheriff's Department

\$45.00

(e) **Writs of Assistance/Evictions (includes all parties at one address. In the case of evictions, the fee shall include one hour of officer standby time for removal if necessary. Additional officer time would be at an officer hourly rate to include wages and benefits)**

\$100.00

(f) Writs of Replevin (includes all attempts necessary to accomplish Writ).....	\$100.00
(d) (g) Sheriff's Foreclosure Sale:	
1. Posting of Notice	\$75.00
2. Holding of Sale	\$75.00
(e) (h) Notice of Sheriff's Sale:	
1. Posting of Notice	\$75.00
2. Occurrence of Sale	\$75.00
(f) (i) Executions—Tax Warrants:	
10% of 1 st \$300	
5% of 2 nd \$300	
3% of remaining balance, with a maximum charge of \$60.00	
(g) Presence of Sheriff's Deputy during execution Of Writ.....	\$31.00/per Hour
(h) Post Office Address Requests.....	Actual Labor Costs
(i) Copy Fee (Photocopies or telephone Facsimiles).....	\$ 1.00 per Page
(j) Presence of Contracted Deputy during Execution of Writ.....	Actual Labor Costs

BE IT FURTHER ORDAINED by the Winnebago County Board of Supervisors that this Ordinance shall take effect of January 1, 2017.

Respectfully submitted by:

JUDICIARY AND PUBLIC SAFETY COMMITTEE

Committee Vote: **5-0**

Vote Required for Passage: **Majority of Those Present**

Approved by the Winnebago County Executive this ____ day of _____, 2016.

Mark L Harris
Winnebago County Executive