

WINNEBAGO COUNTY BOARD OF SUPERVISORS

There will be an Adjourned Meeting of the Winnebago County Board of Supervisors on Tuesday, January 26, 2016, at 6:00 p.m., in the Supervisors' Room, Fourth Floor, Winnebago County Courthouse, 415 Jackson Street, Oshkosh, Wisconsin. At this meeting, the following will be presented to the Board for its consideration:

- Roll Call
- Pledge of Allegiance
- Invocation
- Adopt agenda

Time will be allowed for persons present to express their opinion on any Resolution or Ordinance that appears on the agenda.

- Zoning Petitions:
 - No. 001 – Wildwood Creek, LLC, Town of Winneconne; tax parcel nos. 030-0340-01-01 and 030-0340-01-02; rezone to PDD
 - No. 002 – Jeffrey D. Ogden, Town of Neenah; tax parcel 010-0217; rezone to I-1
 - No. 003 – Tom and Kim Lehouillier, Town of Oshkosh, tax parcel no. 018-2290; rezone to R2 w/o Floodplain
 - No. 004 – Winnebago County Planning and Zoning Committee; Petition for an Amendment to the Winnebago County Future Land Use Plan & Map and Chapter 22 of the Winnebago County General Code
- Communications, petitions, etc.
 - Notice of Claims:
 - Notice of Claim from Lynn Reimer for damages resulting from an alleged conspiracy involving Winnebago County
 - Resolutions from other counties:
 - Outagamie County – Resolution No. 117—2015-16, a resolution supporting, “proposed legislation to make the guidelines and fees for issuing a marriage license and a domestic partnership license the same.....”
 - Outagamie County – Resolution No. 118—2015-16, a resolution opposing, “proposed legislation relating to the referral of cases of suspected or threatened child abuse or neglect to the sheriff or police department...”
 - Racine County – Resolution No. 2015-94, “Resolution by the Government Services Committee Opposing Any Legislation Expanding the Subpoena Process”
- Reports from Committees, Commissions & Boards
- Approval of the proceedings from the December 15, 2015 meeting
- County Executive's Report
- County Executive's Appointments:
 - Aging & Disability Resource Center Committee – Ginger Beuk, 224 E. Tennessee Ave., Oshkosh; Eileen Leinweber, 1863 Crown Drive, Oshkosh; and Michael Norton, 1029 S. Main St, Oshkosh
 - Human Services Board – James Koziczkowski, 104 Lexington Court, Neenah; Tom Widener, 129 Richard Avenue, Neenah; Larry Lautenschlager, 1215 Carr Place, Oshkosh; and Jerry Finch, 515 Shreve Lane, Neenah
- County Board Chairman's Report
- Presentation on Open Meetings Law – John Bodnar, Winnebago County Corporation Counsel

RESOLUTIONS AND ORDINANCES

RESOLUTION NO. 244-12016: Commendation for Jan Faulk
Submitted by:
PERSONNEL & FINANCE COMMITTEE

RESOLUTION NO. 245-12016: Commendation for Wanda Felker
Submitted by:
PERSONNEL & FINANCE COMMITTEE

RESOLUTION NO. 246-12016:	Commendation for Renna Friedman Submitted by: PERSONNEL & FINANCE COMMITTEE
RESOLUTION NO. 247-12016:	Commendation for Joan Lee Submitted by: PERSONNEL & FINANCE COMMITTEE
RESOLUTION NO. 248-12016:	Commendation for Carol Wilcox Submitted by: PERSONNEL & FINANCE COMMITTEE
RESOLUTION NO. 249-12016:	Commendation for Clyde Rasmussen Submitted by: PERSONNEL & FINANCE COMMITTEE
RESOLUTION NO. 250-12016:	Commendation for Michael Footit Submitted by: PERSONNEL & FINANCE COMMITTEE
RESOLUTION NO. 251-12016:	Authorize Beverage Pouring Rights Agreement Between Winnebago County and Pepsi Bottling Group, LLC Submitted by: PARKS & RECREATION COMMITTEE PERSONNEL & FINANCE COMMITTEE
RESOLUTION NO. 252-12016:	Authorize the Sheriff's Department to Accept a \$225,000 Grant from the Department of Justice to be Applied Towards the Purchase of a New Bearcat Tactical Armored Vehicle at a Cost of \$274,026, with the Remaining Balance from the Sale of the Existing Vehicle Submitted by: JUDICIARY & PUBLIC SAFETY COMMITTEE PERSONNEL & FINANCE COMMITTEE
RESOLUTION NO. 253-12016:	Authorize Funding in the Amount of \$640,000 for the Reconstruction of the CTH G Bridge in the Town of Neenah Submitted by: HIGHWAY COMMITTEE PERSONNEL & FINANCE COMMITTEE
RESOLUTION NO. 254-12016:	Convey Two Parcels of Highway Right-of-Way Located at the Intersections of STH 91 and STH 116 in Waukau to the Wisconsin Department of Transportation in Accordance with § 84.09(3)(b), Wis Stats, and Authorize the Appropriate County Officials to Sign the Quit Claim Deed Submitted by: HIGHWAY COMMITTEE
RESOLUTION NO. 255-12016:	Convey Two Parcels of Highway Right-of-Way Located at the Interchange of I-41 and STH 21 to the Wisconsin Department of Transportation in Accordance with § 84.09 (3)(b), Wis Stats, and Authorize the Appropriate County Officials to Sign the Quit Claim Deed Submitted by: HIGHWAY COMMITTEE
RESOLUTION NO. 256-12016:	Authorize Agreement to Create Park View Health Center Endowment Fund Submitted by: PARKVIEW HEALTH CENTER COMMITTEE PERSONNEL & FINANCE COMMITTEE

- RESOLUTION NO. 257-12016: Authorize an Amount Not to Exceed \$600,000 for the Purpose of Hiring of An Architect/Engineer to Design a New Airport Terminal/Office Building
Submitted by:
AVIATION COMMITTEE
FACILITIES & PROPERTY MANAGEMENT COMMITTEE
PERSONNEL & FINANCE COMMITTEE
- RESOLUTION NO. 258-12016: Authorize the Human Services Department to Accept a \$501,333 Crisis Intervention Grant and Appropriate the Funds to Program Expenses Account
Submitted by:
HUMAN SERVICES BOARD
PERSONNEL & FINANCE COMMITTEE
- RESOLUTION NO. 259-12016: Authorize the Transfer of \$29,500 from the General Hospital Psychiatric Expense Account to the Automobile Expense Accounts within the Various Divisions of the Department of Human Services 2015 Budget to Cover Excess Travel Costs Incurred During 2015
Submitted by:
HUMAN SERVICES BOARD
PERSONNEL & FINANCE COMMITTEE
- RESOLUTION NO. 260-12016: Request the East Central Wisconsin Regional Planning Commission to Review and Update the *Lake Winnebago Comprehensive Management Plan* Approved by the Department of Natural Resources in 1989
Submitted by:
LAND CONSERVATION COMMITTEE
- ORDINANCE NO. 261-12016: Amend Sections 3.05(4)b.1. of the General Code of Winnebago County: County Attendance at Meetings or Schools
Submitted by:
PERSONNEL & FINANCE COMMITTEE

Respectfully submitted,
Susan T. Ertmer
Winnebago County Clerk

Upon request, provisions will be made for people with disabilities.

(Times provided are estimates. Any item on the agenda may be taken up by the Board after 6:00 P.M.)

PROCEEDINGS OF THE WINNEBAGO COUNTY BOARD OF SUPERVISORS

**ADJOURNED SESSION
December 15, 2015**

**Winnebago County Courthouse
415 Jackson Street
Oshkosh, Wisconsin**

Printed by authority of the Winnebago County Board
David W. Albrecht, Chairman Susan T. Ertmer, Clerk

**WINNEBAGO COUNTY BOARD MEETING
TUESDAY, DECEMBER 15, 2015**

Chairman David Albrecht called the meeting to order at 6:00 p.m. in the County Board Room, Fourth Floor, Courthouse, 415 Jackson Street, Oshkosh, Wisconsin.

The meeting was opened with the Pledge of Allegiance and an invocation by Supervisor Locke.

The following Supervisors were present: Konetzke, Barker, Harpt, Eisen, Ramos, Kiel, Roh, Smith, Widener, Scherck, Albrecht, Gabert, Egner, Thompson, Olson, Brewer, Wingren, Lautenschlager, Norton, Warnke, Robl, Singstock, Brooks, Turner, Locke, Hegg, Finch, Youngquist, Farrey, Rasmussen, Keller, Egan, Ellis and Snider. Excused: Hardy and Kriescher.

Motion by Supervisor Robl and seconded to adopt the agenda. CARRIED BY VOICE VOTE.

PUBLIC HEARING

No one from the public addressed the board.

COMMUNICATIONS AND PETITIONS

The following correspondence was presented to the Board by Sue Ertmer, County Clerk:

- Resolutions from other counties:
 - Douglas County – #88-15, “Repeal Certain Provisions Enacted in the State of Wisconsin 2015-2017 Budget Concerning Shoreland Zoning Standards” was referred to the Legislative Committee and the Planning and Zoning Committee.
 - Racine County – #2015-80, “Resolution by the Individual Supervisors Supporting Paul Ryan in his New Position as Speaker of the U.S. House of Representatives” was referred to the Legislative Committee.
 - St. Croix County – #22 (2015) – “Resolution to Repeal Paragraph 23 of Motion #520 to the State of Wisconsin 2015-2017 Budget Bill Relative to Shoreland Zoning Standards” was referred to the Legislative Committee and the Planning and Zoning Committee.
 - St. Croix County – Resolution No. 43 (2015), “Resolution to Repeal Statutory Provisions in the State of Wisconsin 2015-2017 Budget Relating to Shoreland Zoning Standards (Sections 1922AM-1922L of 2015 Wisconsin Act 55)” was referred to the Legislative Committee and the Planning and Zoning Committee.
 - St. Croix County – Resolution No. 45 (2015), “Resolution Opposing 2015 Senate Bill 294, Dismantling the Government Accountability Board” was referred to the Legislative Committee.
 - Wood County – Resolution No. 15-11-9, “To support the implementation of the Achieving a Better Life Experience (ABLE) Act to reform the SSI asset limits in Wisconsin” was referred to the Legislative Committee.

REPORTS FROM COMMITTEES, COMMISSIONS AND BOARDS

Supervisor Finch reported that the Parks and Recreation Committee meetings will be held on the 4th Monday of the month at 9:00 a.m.

Supervisor Finch announced that Mary Krueger, Human Services Department, has been chosen to be on the Long Term Support Policy Advisor Committee through the WCHSA Committee of Human Services.

Supervisor Roh read a letter from a constituent, Mrs. Bill Roh, regarding her stay at Park View Health Center. She praised the Park View staff for the excellent care that she received. She commended all the staff for the cleanliness and the neatness of the facility. County Supervisors should consider Park View Health Center as a “Jewel in the Crown”.

Supervisor Widener discussed an article that he heard about in the newspaper regarding Associate or Bachelor’s Degree thru the UW-Extension. He checked in to this with the UW-Extension office and discovered that it is a flexible degree that started in Governor Walker’s office. Mr. Widener further explained details regarding this degree and how it can be obtained.

Supervisor Kiel recommended that all Supervisors take time to listen to a 49 minute audio presentation or text version that was forwarded to the County Clerk’s office regarding “Epidemic of our Time Heroine and Opiate Addiction in Wisconsin” by Dan O’Donnell.

Supervisor Kiel attended the Greater Fox Cities Habitat for Humanity dedication of their 200th home in the Town of Menasha.

Supervisor Wingren noted that the Legislative Committee will meet on Monday, January 25, 2016.

Supervisor Norton attended a Re-Think end-of-the year celebration where a number of community awards were given out. Supervisor Kenn Olson was the recipient of an “Inspiration Award”.

Motion by Supervisor Robl and seconded by Supervisor Finch to approve the November 17, 2015 proceedings. Supervisor Snider noted that on page 200 under the Winnefox Library System Board of Trustees, Jeff Jansen's name was spelled incorrectly. It should be "Jeff Jensen". CARRIED BY VOICE VOTE.

COUNTY EXECUTIVE'S REPORT

Mark Harris, Winnebago County Executive, was asked to mention that Fit Oshkosh Inc. and Wisconsin Humanity Council will be doing a read of Ta-Nehisi Coates' book titled "Between the World and Me". Executive Harris ordered the book and encouraged all Supervisors to order this book or reserve it at the library and read it too.

Mark Harris, Winnebago County Executive, encouraged support of the following resolutions:

- Resolution #242-122015 – Authorize Naming the New Snell Road Landfill Conservation Park.
- Ordinance #243-122015 – Amend Section 3.05 of the General Code of Winnebago County: Attendance at Meetings or Schools.

COUNTY EXECUTIVE APPOINTMENTS

Grievance Review Board

County Executive Harris asked for approval of his appointment of Ronald Lewis, 1855 White Swan Drive, Oshkosh to the Grievance Review Board. Mr. Lewis will replace Bill Wagner whose term has expired. This is a five-year term which will expire on December 31, 2020.

Motion by Supervisor Farrey and seconded by Supervisor Ellis to approve. CARRIED BY VOICE VOTE.

Local Emergency Planning Commission

County Executive Harris asked for approval of his appointments and re-appointments of Tracy Warren, Emergency Preparedness Coordinator Aurora Medical Center; Mike Sipin, Neenah-Menasha Fire Rescue; Emily Makowski, Oshkosh Community Services; Doug Gieryn, Winnebago County Health Department; and Larry Smith, Winnebago County Board Supervisor to the Local Emergency Planning Commission. Ms. Warren's term will expire December 31, 2017. Mr. Sipin, Ms. Makowski, Mr. Gieryn and Mr. Smith's terms will expire December 31, 2018.

Motion by Supervisor Egner and seconded by Supervisor Ellis to approve. CARRIED BY VOICE VOTE.

Veterans Service Commission

County Executive Harris asked for approval of his re-appointments of Robert Warnke, 426 W. 16th Avenue, Oshkosh; Jim Romnek, 809 Woodfield, Neenah; and Tom Snider, 6450 Breeze Street, Winneconne to the Veterans Service Commission. These are three-year terms which will expire on December 31, 2018.

Motion by Supervisor Finch and seconded by Supervisor Konetzke to approve. CARRIED BY VOICE VOTE.

Winnefox Library System Board of Trustees

County Executive Harris asked for approval of his appointments of Kim Molitor, 4364 Harbor Village Drive, Omro; and Mary Biebel, 1120 Maricopa Drive, Oshkosh; to the Winnefox Library System Board of Trustees. These are three-year terms which will expire on December 31, 2018.

Motion by Supervisor Finch and seconded by Supervisor Ellis to approve. CARRIED BY VOICE VOTE.

COUNTY BOARD CHAIRMAN'S REPORT

Chairman Albrecht reported that Supervisors Hardy and Kriescher are excused from tonight's meeting. Chairman Albrecht stated that the January meeting date will be changed from January 19 to January 26, 2016 due to the Highway Conference.

ZONING REPORTS AND ORDINANCES

Report No. 001 – A report from the Planning & Zoning Committee regarding a requested zoning change from property owner, MS Real Estate Holdings, LLC; and agents Brian and Carrie Chappa, Town of Omro, for a zoning change to R-1 Rural Residential for tax parcel no. 016-0521(p). Motion by Supervisor Egan and seconded by Supervisor Finch to accept. CARRIED BY VOICE VOTE.

Amendatory Ordinance No. 12/01/15 – A requested zoning change from A-2 General Agriculture to R-1 Rural Residential. Motion by Supervisor Egan and seconded by Supervisor Gabert to adopt. CARRIED BY VOICE VOTE. (Effective date: December 21, 2015)

Report No. 002 – A report from the Planning & Zoning Committee regarding a requested zoning change from property owners, Linda and Ronald Wachholz, Town of Nekimi, for a zoning change to A-2 General Agriculture for tax parcel no. 012-0250-01. Motion by Supervisor Egan and seconded by Supervisor Gabert to accept. CARRIED BY VOICE VOTE.

Amendatory Ordinance No. 12/02/15 – A requested zoning change from I-1 Light Industrial to A-2 General Agriculture. Motion by Supervisor Egan and seconded by Supervisor Finch to adopt. CARRIED BY VOICE VOTE. (Effective date: December 21, 2015)

RESOLUTIONS AND ORDINANCES

RESOLUTION NO. 237-122015: Authorize Execution of Lease Agreement Between Winnebago County and Winnebago County Fair Association

WHEREAS, Winnebago County recognizes that the Winnebago County Fair is an important family event that benefits the quality of life in Winnebago County; and

WHEREAS, the Winnebago County Fair Association wishes to continue organizing and managing the County Fair as an event that celebrates the cultural, educational, and recreational traditions of Winnebago County.

NOW, THEREFORE, BE IT RESOLVED by the Winnebago County Board of Supervisors that it hereby authorizes that the Winnebago County Executive and the Winnebago County Clerk be and they hereby are authorized to execute the lease agreement between Winnebago County and the Winnebago County Fair Association for a term beginning January 1, 2016, and ending December 31, 2020. A copy of said Agreement may be obtained from the Winnebago County Parks Director or the Winnebago County Corporation Counsel, and is incorporated by reference and made a part of this Resolution.

Submitted by:
PARKS AND RECREATION COMMITTEE

Motion by Supervisor Finch and seconded by Supervisor Farrey to approve. CARRIED BY VOICE VOTE.

RESOLUTION NO. 238-122015: Approve Request of Updating of 1950 Easement Relating to ANR Pipeline Company's Gas Pipeline and its Crossing of the WIOUWASH Recreational Trail

WHEREAS, in 1974 Winnebago County purchased the Chicago & Northwestern railroad corridor with the intention of converting it into a recreation trail; and,

WHEREAS, with the purchase of the railroad corridor Winnebago County also assumed responsibility as a grantor of a gas pipeline easement established in 1950 and situated approximately 500 yards northwest of the Westwind Road Trail parking lot; and,

WHEREAS, since the former railroad corridor was ultimately adapted to serve as a recreation trail, it was recently determined that it would be beneficial for both the ANR Pipeline Company and for Winnebago County to proceed with updating the original 1950 easement document so that the provisions are based on an up-to-date format similar to the gas pipeline easement granted along the WIOUWASH Recreation Trail in May 2009; and,

WHEREAS, your undersigned Committee believes that it would be in the best interests of Winnebago County to proceed with replacement of the outdated 1950 gas pipeline easement text with an updated document which accurately reflects the presence and operation of the pipeline crossing underneath the WIOUWASH Recreation Trail.

NOW, THEREFORE, BE IT RESOLVED, by the Winnebago County Board of Supervisors that it hereby authorizes the Winnebago County Executive to replace the aforementioned 1950 gas pipeline easement with the restructured narrative contained within the attached document which accurately reflects the existence and operation of a gas pipeline crossing in association with the WIOUWASH Recreation Trail. A copy of the proposed Easement is attached.

Submitted by:
PARKS AND RECREATION COMMITTEE

Motion by Supervisor Finch and seconded by Supervisor Ellis to approve. CARRIED BY VOICE VOTE.

RESOLUTION NO. 239-122015: Authorize Execution of a Land Lease Between Winnebago County and the Army Corp of Engineers for the Purpose of Operating a Water Level Gauging Station at Lake Butte des Morts Boat Landing

WHEREAS, over the past several decades Winnebago County residents have benefited from the successful operation of the Army Corp of Engineers' water level gauging station located at the County's Boom Bay Boat Landing; and

WHEREAS, during the time that the water level gauging station has been present at Boom Bay Boat Landing, Winnebago County has leased the 2' X 2' area to the Army Corp of Engineers without incident or impact on boaters using the launch facilities; and

WHEREAS, the Army Corp of Engineers wishes to further refine its ability to monitor and record water levels within the Lake Winnebago pool by installing another gauging station; and

WHEREAS, the Army Corp of Engineers has submitted a formal request asking that Winnebago County consider allowing the Corp to lease a 2' X 2' area at the Lake Butte des Morts Boat Landing in order to install and

operate a solar-powered water level gauging station in the same manner as its Boom Bay Boat Landing water level gauging station; and

WHEREAS, your undersigned Committee believes that it would be in the best interests of Winnebago County to proceed with establishment of said lease for a fifteen (15) year term ending October 25, 2030.

NOW, THEREFORE, BE IT RESOLVED, by the Winnebago County Board of Supervisors that the Winnebago County Executive be and he hereby is authorized to execute on behalf of Winnebago County to the Army Corp of Engineers, Lease Number DACW35-5-16-3001 for operation of a water level gauging station at Lake Butte des Morts Boat Landing.

Submitted by:
PARKS AND RECREATION COMMITTEE

Motion by Supervisor Finch and seconded by Supervisor Konetzke to approve. CARRIED BY VOICE VOTE.

RESOLUTION NO. 240-122015: Amend the Table of Organization for Winnebago County Human Services Department

WHEREAS, the 2016 Budget adopted by the Winnebago County Board of Supervisors adds one full-time Psychotherapist position to the table of organization for the Human Services Department, effective January 1, 2016; and

WHEREAS, the job duties for which the Human Services Department needs additional staffing are those that fall under the current job title of "Family Services Therapist" rather than the job title of "Psychotherapist," but the Department mistakenly used the wrong job title in its new position request; and

WHEREAS, the positions of Psychotherapist and Family Services Therapist have very similar qualifications and are in the same pay grade, so the error was not easily observed, and correcting the error will not affect the amounts budgeted for the new position;

NOW, THEREFORE, BE IT RESOLVED, by the Winnebago County Board of Supervisors, that it hereby amends the Table of Organization for the Winnebago County Human Services Department, effective January 1, 2016, by deleting one full-time Psychotherapist position and adding one full-time Family Services Therapist position.

Submitted by:
PERSONNEL AND FINANCE COMMITTEE

Motion by Supervisor Rasmussen and seconded by Supervisor Ellis to approve. CARRIED BY VOICE VOTE.

RESOLUTION NO. 241-122015: Authorize the Transfer of \$15,600 from the UW Extension Department's Small Equipment Account in its 2016 Budget to its Capital Outlay Account of the Department's 2016 Budget for the Purpose of Purchasing and Installing a Hearing Loop in the Coughlin Building's Large Conference Room

WHEREAS, the UW Extension included \$15,600 in its Small Equipment Account of its 2016 Budget for the purpose of purchasing and installing a hearing loop at the Coughlin Center; and

WHEREAS, the purchase and installment of said equipment will be a Capital Expenditure when the equipment is purchased and installed; and

WHEREAS, Winnebago County Board Rules require that the transfer of amounts between Budget categories (Labor, travel, Capital, and Other) must be approved by the Winnebago County Board of Supervisors; and

WHEREAS, this misclassification was overlooked when the 2016 Budget was prepared.

NOW, THEREFORE, BE IT RESOLVED by the Winnebago County Board of Supervisors that it hereby authorizes the transfer of \$15,600 from the Small Equipment Account to the Capital Outlay Account of the UW Extension Department's 2016 Budget.

Submitted by:
UW EXTENSION COMMITTEE
PERSONNEL AND FINANCE COMMITTEE

Motion by Supervisor Rasmussen and seconded by Supervisor Finch to approve. CARRIED BY VOICE VOTE.

RESOLUTION NO. 242-122015: Authorize Naming the New Snell Road Landfill Conservation Park

WHEREAS, Ken Robl has served on the Winnebago County Board of Supervisors for over 35 years; and

WHEREAS, Ken Robl has served as a member of the Winnebago County Solid Waste Management Board for over 35 years; and

WHEREAS, Ken Robl is a life-long environmentalist and a citizen of Winnebago County; and

WHEREAS, Ken Robl's knowledge and wisdom as a Winnebago County Board member and as a member of the Winnebago County Solid Waste Management Board have been extremely beneficial to the development and growth of Winnebago County over the past 35 years; and

WHEREAS, it is altogether fitting and appropriate that the conservation park that is to be developed at the Snell Road Landfill site be named in Ken Robl's honor.

NOW, THEREFORE, BE IT RESOLVED by the Winnebago County Board of Supervisors that it hereby recommends naming the new conservation park to be developed at the site of the Snell Road Landfill be named "Ken Robl Conservation Park."

Submitted by:
SOLID WASTE MANAGEMENT BOARD

Motion by Supervisor Eisen and seconded by Supervisor Finch to approve. CARRIED BY VOICE VOTE. Supervisor Robl received a standing ovation for his years of dedication.

ORDINANCE NO. 243-122015: Amend Section 3.05 of the General Code of Winnebago County: Attendance at Meetings or Schools

WHEREAS, it has been many years since the Winnebago County Travel Ordinance (above) has been reviewed; and

WHEREAS, the Finance Director has recommended to your undersigned Committee that a complete review of the Ordinance would be in order; and

WHEREAS, your undersigned Committee did review the recommended changes as outlined in the attached document summary and markup of the current Ordinance.

NOW, THEREFORE, BE IT ORDAINED by the Winnebago County Board of Supervisors that it hereby authorizes that the recommended changes be made to Section 3.05 of the General Code of Winnebago County as outlined in the attached document.

Submitted by:
PERSONNEL AND FINANCE COMMITTEE

Motion by Supervisor Rasmussen and seconded by Supervisor Ellis to approve. Motion by Supervisor Singstock and seconded to amend Section (7) Enforcement to read as follows: The Chairman of the Personnel and Finance Committee shall be responsible to review "and approve" expense reimbursement requests of the County Board Chairman and County Executive for purposes of compliance with this Ordinance. Vote on Amendment: CARRIED BY VOICE VOTE. Vote on Resolution: CARRIED BY VOICE VOTE. (Supervisors Widener and Olson voted no.)

Motion by Supervisor Robl and seconded to adjourn until the January 5, 2016 special orders meeting at 6:00 p.m. The meeting was adjourned at 6:35 p.m.

Submitted by:
Julie A. Barthels
Winnebago County Deputy Clerk

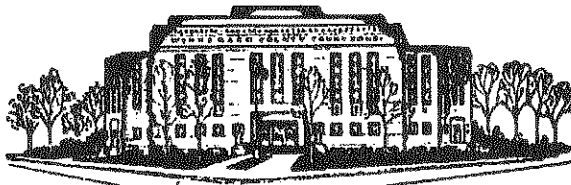
State of Wisconsin)
County of Winnebago) ss

I, Julie A. Barthels, do hereby certify that the foregoing is a true and correct copy of the Journal of the Winnebago County Board of Supervisors for their regular meeting held December 15, 2015.

Julie A. Barthels
Winnebago County Deputy Clerk

MARK L. HARRIS
County Executive

112 OTTER AVE., P. O. BOX 2808
OSHKOSH, WISCONSIN 54903-2808



Winnebago County
Office of the County Executive

OSHKOSH (920) 232-3450
FOX CITIES (920) 727-2880
FAX (920) 232-3429

TO: Members of the Winnebago County Board

FROM: Mark L. Harris

DATE: January 19, 2016

SUBJECT: Re-appointments to the **AGING & DISABILITY RESOURCE CENTER COMMITTEE**

Subject to your approval, I am hereby making the following re-appointments to the **AGING & DISABILITY RESOURCE CENTER COMMITTEE**.

Ginger Beuk
224 E. Tennessee Ave.
Oshkosh, WI. 54901

Eileen Leinweber
1863 Crown Drive
Oshkosh, WI. 54904

Michael Norton
1029 S. Main St., Apt. B
Oshkosh, WI. 54902

These are three (3) year terms which will expire August 31, 2018

Thank you in advance for your favorable consideration of these appointments.


Mark L. Harris, County Executive

MLH/jpf
CC: County Clerk
Aging & Disability Resource Center Committee

MARK L. HARRIS
County Executive

112 OTTER AVE., P. O. BOX 2808
OSHKOSH, WISCONSIN 54903-2808



Winnebago County
Office of the County Executive

OSHKOSH (920) 232-3450
FOX CITIES (920) 727-2880
FAX (920) 232-3429

TO: Members of the Winnebago County Board
FROM: Mark L. Harris
DATE: January 19, 2016
SUBJECT: Re-appointments to the **HUMAN SERVICES BOARD**

Subject to your approval, I am hereby making the following re-appointments to the **HUMAN SERVICES BOARD**

James Kozickowski
104 Lexington Court
Neenah, WI. 54956

Larry Lautenschlager
1215 Carr Place
Oshkosh, WI. 54901

Tom Widener
129 Richard Avenue
Neenah, WI. 54956

Jerry Finch
515 Shreve Lane
Neenah, WI. 54956

These are three (3) year terms which will expire August 31, 2018

Thank you in advance for your favorable consideration of these appointments.


Mark L. Harris, County Executive

MLH/jpf
CC: County Clerk
Human Services Board

- 1
- 2
- 3
- 4
- 5
- 6
- 7
- 8
- 9
- 10
- 11
- 12
- 13
- 14
- 15
- 16
- 17
- 18
- 19
- 20
- 21
- 22
- 23
- 24
- 25

TO THE WINNEBAGO COUNTY BOARD OF SUPERVISORS:

WHEREAS, Jan Faulk has now retired from those duties, and it is appropriate for the Winnebago County Board of Supervisors to acknowledge her years of service.

BE IT FURTHER RESOLVED that the Winnebago County Clerk send a copy of this Resolution to Jan Faulk.

PERSONNEL AND FINANCE COMMITTEE

Vote Required for Passage: **Majority of Those Present**

Approved by the Winnebago County Executive this _____ day of _____, 2014.

24
25

- 1
- 2
- 3
- 4
- 5
- 6
- 7
- 8
- 9
- 10
- 11
- 12
- 13
- 14
- 15
- 16
- 17
- 18
- 19
- 20
- 21
- 22
- 23
- 24
- 25

TO THE WINNEBAGO COUNTY BOARD OF SUPERVISORS:

WHEREAS, Wanda Felker has now retired from those duties, and it is appropriate for the Winnebago County Board of Supervisors to acknowledge her years of service.

NOW, THEREFORE, BE IT RESOLVED by the Winnebago County Board of Supervisors that sincere appreciation and commendation be and is hereby extended to Wanda Felker for the fine services she has rendered to Winnebago County.

BE IT FURTHER RESOLVED that the Winnebago County Clerk send a copy of this Resolution to Wanda Felker.

Respectfully submitted by:

PERSONNEL AND FINANCE COMMITTEE

Committee Vote: **5-0**

Vote Required for Passage: **Majority of Those Present**

Approved by the Winnebago County Executive this _____ day of _____, 2014.

Mark L Harris
Winnebago County Executive

1

2
3

4

5
6

7
8

9
10
11

12

13

14

15

17

18

21

24
25

1	2	3	4	5	6	7	8	9	10	11	12	13	14	15	16	17	18	19	20	21	22	23	24	25	26
---	---	---	---	---	---	---	---	---	----	----	----	----	----	----	----	----	----	----	----	----	----	----	----	----	----

TO THE WINNEBAGO COUNTY BOARD OF SUPERVISORS:

WHEREAS, Joan Lee has now retired from those duties, and it is appropriate for the Winnebago County Board of Supervisors to acknowledge her years of service.

BE IT FURTHER RESOLVED that the Winnebago County Clerk send a copy of this Resolution to Joan Lee.

PERSONNEL AND FINANCE COMMITTEE

Vote Required for Passage: **Majority of Those Present**

Approved by the Winnebago County Executive this _____ day of _____, 2014.

Mark L Harris
Winnebago County Executive

1	2	3	4	5	6	7	8	9	10	11	12	13	14	15	16	17	18	19	20	21	22	23	24	25	26
---	---	---	---	---	---	---	---	---	----	----	----	----	----	----	----	----	----	----	----	----	----	----	----	----	----

TO THE WINNEBAGO COUNTY BOARD OF SUPERVISORS:

WHEREAS, Carol Wilcox has now retired from those duties, and it is appropriate for the Winnebago County Board of Supervisors to acknowledge her years of service.

BE IT FURTHER RESOLVED that the Winnebago County Clerk send a copy of this Resolution to Carol Wilcox.

PERSONNEL AND FINANCE COMMITTEE

Vote Required for Passage: **Majority of Those Present**

Approved by the Winnebago County Executive this _____ day of _____, 2014.

Mark L Harris
Winnebago County Executive

- 1
- 2
- 3
- 4
- 5
- 6
- 7
- 8
- 9
- 10
- 11
- 12
- 13
- 14
- 15
- 16
- 17
- 18
- 19
- 20
- 21
- 22
- 23
- 24
- 25
- 26

TO THE WINNEBAGO COUNTY BOARD OF SUPERVISORS:

WHEREAS, Clyde Rasmussen has now retired from those duties, and it is appropriate for the Winnebago County Board of Supervisors to acknowledge his years of service.

BE IT FURTHER RESOLVED that the Winnebago County Clerk send a copy of this Resolution to Clyde Rasmussen.

PERSONNEL AND FINANCE COMMITTEE

Vote Required for Passage: **Majority of Those Present**

Approved by the Winnebago County Executive this _____ day of _____, 2014.

Page 1

1	2	3	4	5	6	7	8	9	10	11	12	13	14	15	16	17	18	19	20	21	22	23	24	25	26
---	---	---	---	---	---	---	---	---	----	----	----	----	----	----	----	----	----	----	----	----	----	----	----	----	----

TO THE WINNEBAGO COUNTY BOARD OF SUPERVISORS:

WHEREAS, Michael Footit has now retired from those duties, and it is appropriate for the Winnebago County Board of Supervisors to acknowledge his years of service.

BE IT FURTHER RESOLVED that the Winnebago County Clerk send a copy of this Resolution to Michael Footit.

PERSONNEL AND FINANCE COMMITTEE

Vote Required for Passage: **Majority of Those Present**

Approved by the Winnebago County Executive this _____ day of _____, 2014.

Mark L Harris
Winnebago County Executive

- 1
- 2
- 3
- 4
- 5
- 6
- 7
- 8
- 9
- 10
- 11
- 12
- 13
- 14
- 15
- 16
- 17
- 18
- 19
- 20
- 21
- 22
- 23
- 24
- 25
- 26
- 27
- 28
- 29
- 30
- 31
- 32
- 33
- 34
- 35
- 36
- 37
- 38
- 39
- 40
- 41
- 42
- 43
- 44
- 45
- 46
- 47
- 48
- 49
- 50

TO THE WINNEBAGO COUNTY BOARD OF SUPERVISORS:

WHEREAS, pursuant to this agreement, Lessees of Parks properties would agree to sell exclusively Pepsi beverage products at events which they sponsor; and,

WHEREAS, in exchange for both its financial and material support, Winnebago County would extend to Pepsi certain promotional privileges including the right to post specified advertising related materials on predetermined Parks properties; and,

WHEREAS, in conjunction with this agreement, Pepsi would annually pay Winnebago County a support payment of \$1,500.00 as well as a compensatory sum based upon the total amount of beverage cases sold on Parks properties multiplied by the beverage case commission rate applicable within any given year over the term of the agreement; and,

NOW, THEREFORE, BE IT RESOLVED by the Winnebago County Board of Supervisors that it hereby authorizes the Winnebago County Executive and Winnebago County Clerk to enter into an agreement with Pepsi Bottling Company LLC for beverage pouring rights on Winnebago County Parks Department properties, which said agreement shall run through December 31, 2020, and shall contain those major terms described above. A copy of the aforementioned agreement, attached hereto, is made a part of this Resolution and incorporated herein by reference.

Fiscal Note: Average revenue derived from previous 5-year agreement is \$10,000 annually. The estimated revenue for the upcoming 5-year agreement is \$12,000 annually (including aforementioned \$1,500.00 support payment).

Respectfully submitted by:

PARKS AND RECREATION COMMITTEE

Committee Vote: 3-0

Respectfully submitted by:

PERSONNEL AND FINANCE COMMITTEE

Committee Vote: **5-0**

Vote Required for Passage: **Majority of Those Present**

Approved by the Winnebago County Executive this _____ day of _____, 2016.

Mark L Harris
Winnebago County Executive

BEVERAGE SALES AGREEMENT Winnebago County Parks Department

This sets forth the agreement (“**Agreement**”) between Bottling Group, LLC, a Delaware limited liability company, and its affiliates and/or respective subsidiaries collectively comprising **Pepsi Beverages Company** with an office located at 325 W 20th Avenue, Oshkosh, WI 54902 (“**Pepsi**”) and **Winnebago County Parks Department**, with the principal place of business at 625 E County Road Y, Suite 500, Oshkosh, WI 54901. (the “**Customer**”) relating to the purchase by the Customer from Pepsi of the Products. The support described below is in lieu of any other discounts, allowances or rebates to which the Customer might otherwise be entitled from time to time.

Definitions

As used in this Agreement, the following capitalized terms shall have the respective meanings assigned thereto below.

“**Beverage**” or “**Beverages**” means all carbonated and non-carbonated, non-alcoholic drinks, however dispensed, including but not limited to, (i) colas and other flavored carbonated drinks; (ii) fruit juice, fruit juice containing and fruit flavored drinks; (iii) chilled coffee drinks; (iv) chilled tea products; (v) hypertonic, isotonic and hypotonic drinks (sports drinks and fluid replacements); (vi) energy drinks, (vii) packaged carbonated or still water (including spring, mineral or purified), (viii) liquid concentrate teas (“**LCT**”), (ix) frozen carbonated and non-carbonated beverages (“**FB**”), and (x) any future categories of nonalcoholic beverage products that may be distributed by Pepsi.

“**Cases**” shall mean the number of cases of Packaged Products purchased by the Customer from Pepsi, initially delivered in quantities of 24, 15, and 12 bottle/can units, and thereafter in such other size, quantity and type of containers as determined by Pepsi, from time to time.

“**Gallons**” shall mean the number of gallons of the Post mix Products purchased by the Customer from Pepsi.

“**Outlets**” shall mean the existing Customer facilities operated under the trademarks as listed in attached and shall include any restaurant, outlet or other facility in the Customer’s system that may be opened or acquired by the Customer under those trademarks during the Term. In the event that Customer acquires, owns or operates facilities under a different concept and/or trademark during the Term, Customer will purchase Products pursuant to the terms of this Agreement for service in such facilities, which will be considered Outlets under this Agreement. In the event that new Outlets are added during the Term of this Agreement, the parties shall create an updated addendum and attach it hereto. The Outlets shall include the parking garages or other Customer-owned/controlled/operated surrounding areas located at or within those facilities.

“**Packaged Products**” shall mean Beverages that are sold and/or distributed by Pepsi in pre-packaged form (*e.g.*, bottles and cans). A current list of Pepsi’s Packaged Products is listed in attached Exhibit B which may be amended by Pepsi from time to time.

“**Postmix Products**” shall mean Beverages used to create and dispense fountain beverages and/or frozen carbonated and non-carbonated beverages. A current list of Pepsi’s Post mix Products is listed in attached Exhibit B which may be amended by Pepsi from time to time.

“**Products**” shall mean Postmix Products, Packaged Products and LCT manufactured, bottled, sold and/or distributed by Pepsi.

“**Year**” shall mean each 12-month period during the Term commencing on the first day of the Term or an anniversary thereof.

1. Term

The term of this Agreement shall commence on **January 1, 2016** and expire upon the later of **December 31, 2020**, or at such time as Customer’s collective purchases of Products meets or exceeds a volume threshold (the “**Volume Threshold**”) of **5,550 Cases of 20 ounce bottled Packaged Products** (the “**Term**”). Thus, in the event the Volume Threshold is not met on or before the date indicated above, then the Term shall automatically extend for the period of time necessary until the Volume Threshold has been met (the “**Automatic Extension**”). Except for applicable Marketing Support Funds, which may be earned during the Automatic Extension, Pepsi shall not provide any other consideration to Customer. When fully executed, this Agreement will constitute a binding obligation of both parties until expiration or termination.

2. Scope

(A) Exclusive Pouring Rights

Except as set forth below in Section 3(A), during the Term of this Agreement Pepsi shall have the exclusive right to make all Beverages (including Fountain Products and Packaged Products) available for sale and distribution within the Customer’s Outlets, including at all locations located within the Outlets where Beverages are sold and catering operations for Customer or its Outlets. Accordingly, the Products shall be the only Beverages of their respective type sold, dispensed or served anywhere at the Outlets, and Customer will cause the purchasing representative for each of the Outlets to purchase all its respective requirements for such Products directly and exclusively from Pepsi.

(B) Ancillary Products

During the Term, Customer will cause the purchasing representative for each of the Outlets to purchase all its respective requirements for carbon dioxide and branded disposable cups (“**Ancillary Products**”) exclusively from Pepsi.

(C) Advertising Rights

Pepsi may advertise and promote its Products in and with respect to the Customer and its Outlets upon mutually agreed to terms and conditions.

3. Performance

This Agreement, including all of Pepsi's support to the Customer as described below, is contingent upon the Customer complying with all of the following performance criteria:

- (A) **Exclusivity.** The Products shall be the exclusive Beverage of their respective types sold, dispensed or otherwise made available, or in any way advertised, displayed, represented or promoted at or in connection with the Outlets by any method or through any medium whatsoever (including without limitation print, broadcast, direct mail, coupons, handbills, displays and signage), whether public or private. In no event shall there be served, dispensed or otherwise made available, or in any way advertised, displayed, represented or promoted, beverage products licensed by, or produced by bottlers licensed by, The Coca-Cola Company or any affiliate thereof, or any other supplier of competitive nonalcoholic Beverages.

Notwithstanding the foregoing, visitors to the Outlets shall be permitted to bring onto the premises competitive Beverages for personal consumption; provided, such competitive Beverages are not purchased or sold on the premises of the Outlets.

- (B) **Product Mix.** The Customer represents that it shall purchase and shall cause its Outlets to purchase Products exclusively from Pepsi and that it shall use reasonable efforts to maintain a mix of both Postmix Products and Packaged Products at each of the Outlets throughout the Term.

- (C) **Fountain Products.** The Customer shall only use the Postmix Products for use in preparing the fountain beverage products (the "**Fountain Products**"): in accordance with the standards established by Pepsi; and (ii) only for immediate or imminent consumption and shall not resell the Postmix Products either to nonaffiliated outlets or to consumers in any form other than the Fountain Products.

- (D) **Brand ID.** The Customer shall have appropriate brand identification, as identified by Pepsi, for each Product served on all menus (including catering), menu boards and postmix dispensing valves at each of the Outlets throughout the Term.

- (E) **Changes in Outlet(s).** The Customer agrees that it shall promptly notify Pepsi, in writing, of each new Outlet which is opened or acquired during the Term, as well as of any Outlet which is closed, sold or otherwise disposed of during the Term so that the parties may promptly update **Error! Reference source not found.**

- (F) **Minimum SKU Requirement.** At all times during the Term, the Customer agrees to mandate the distribution of a minimum of the following skus of Products, as applicable, at each of the Outlets ("**Required SKUS**"). The Required SKUs shall be determined as follows:

20oz Bottles – Gatorade – 20oz Aquafina water and a variety of 20oz Soda and Tea

4. Consideration

In consideration of the exclusive rights granted to Pepsi by Customer over the Term of this Agreement, and provided Customer is not in breach of this Agreement, Pepsi shall provide Customer with the following:

- (A) **Marketing Support Funds.** Each Year throughout the Term, Pepsi shall calculate the total number of Cases of Packaged Products purchased by the Outlets from Pepsi pursuant to this Agreement, and shall provide the Customer with marketing support funds calculated based on applicable amounts set forth below (the “***Marketing Support Funds***”). The Marketing Support Funds, if applicable, shall be paid by Pepsi within sixty (60) days of the end of each applicable Year during the Term. In the event that any Outlet is closed during the Term of this Agreement, Pepsi agrees to provide Customer with all Marketing Support Funds accrued on behalf of that applicable Outlet as of the time of closing, provided that such Outlet was in full compliance with the terms and conditions of this Agreement.

Marketing Support Funds Amount	Applicable Products
<i>\$3.00 per case / 24 pack</i>	Gatorade and Aquafina water
<i>\$3.00 per case / 24 pack</i>	Soda or Tea

The parties agree that Pepsi shall not accrue or pay any Marketing Support Funds for sales to Outlets that are in breach of the Performance Requirements listed in Section 3 above. Customer agrees that the Marketing Support Funds shall be used in part to help offset costs associated with mutually agreed upon marketing programs and promotions throughout the Term.

- (B) **Annual Support Funds.** Pepsi shall provide Customer with annual support funds in the amount of One Thousand Five Hundred Dollars (\$1,500), payable to the Customer within sixty (60) days after the signing of this Agreement by both parties with respect to Year 1 and thereafter within sixty (60) days following commencement of each Year until the end of the Term of this Agreement not to exceed Five (5) consecutive payments (the “***Annual Support Funds***”). The Annual Support Funds are earned throughout the Year in which they are paid. In the event Pepsi terminates this Agreement due to the Customer’s failure to cure a breach hereof, the unearned Annual Support Funds will be repaid to Pepsi pursuant to the terms of Section 7(B)(i) herein.
- (C) **Donated Product.** Each Year throughout the Term upon request from Customer, Pepsi will provide Customer with ***100 free cases of 16.9oz*** of Aquafina Packaged Products. Customer acknowledges and agrees that donated Product requests not used/made in any Year shall not be carried over to the subsequent Year.
- (D) **Free Equipment Loan and Service.** As further outlined in Section 5 below, Pepsi shall provide at no cost to Customer or the Outlets necessary dispensing/selling Equipment for Beverages at the Outlets (**unless prohibited by State laws**). Such Equipment shall be in

sufficient quantities (in light of sales volume) as determined by Pepsi to satisfy the Outlet's reasonable needs.

5. Equipment

Pepsi will loan each Outlet, at no charge, appropriate equipment for dispensing the Products during the Term ("***Equipment***"). Customer agrees that the Equipment shall be exclusively used to display and merchandise the Products, and the Customer shall not use the Equipment to display, stock, advertise, sell or maintain any other products (including on the exterior of the Equipment). Pepsi will also provide, at no charge to the Customer, service to the Equipment. Title to such Equipment will remain vested in Pepsi or its affiliate and all such Equipment will be returned to Pepsi upon expiration or earlier termination of this Agreement. Each Year during the Term or at Pepsi's request, Customer shall provide Pepsi with a written Equipment verification list indicating the asset number, Equipment type and location of the Equipment loaned to the Customer pursuant to this Agreement. Failure to provide such verification list to Pepsi shall be deemed a material breach of this Agreement.

Pepsi will provide, at no charge to the Customer, preventative maintenance and service to the Equipment. Pepsi will also provide Customer with a telephone number to request emergency repairs and receive technical assistance related to the Equipment after business hours. Pepsi will promptly respond to each applicable Customer request, and will use reasonable efforts to remedy the related Equipment problem as soon as possible.

6. Pricing

Pepsi will provide Customer/Outlets a complete supply of Products during the Term of this Agreement and shall deliver such Products in a timely manner (based on mutually agreed upon delivery schedules) and in good and sanitary condition. The Products and Ancillary Products shall be purchased by the Customer from Pepsi at prices established by Pepsi. The current pricing schedule for Products is set forth on attached Exhibit B. Thereafter, the prices may be changed from time to time at Pepsi's discretion; provided, however, ***any annual price increase is to be capped at 4%***. Pepsi shall provide thirty (30) days' notice of any price increases during the Term.

7. General Terms

(A) **Termination.** Either party may terminate this Agreement if the other commits a material breach of this Agreement; provided, however, that the terminating party has given the other party written notice of the breach and the other party has failed to remedy or cure the breach within thirty (30) days of such notice.

In the event of breach of this Agreement by one or more Outlet(s), the parties agree that Pepsi shall have the option, in lieu of termination of the entire Agreement, to terminate the Agreement only as it pertains to the applicable breaching Outlet(s) and to obtain an equitable reimbursement for the portions of funding and other costs attributable to such breaching Outlet(s).

- (B) **Remedies.** If Pepsi terminates this Agreement as a result of default by Customer or its Outlets, or if Customer terminates this Agreement other than due to Pepsi's failure to cure a breach hereof, then Customer and its Outlets will surrender to Pepsi all Equipment provided by Pepsi and shall forfeit all funding not paid as of the date of termination. In addition, without prejudice to any other right or remedy available to Pepsi, Pepsi shall have the right to immediately seek reimbursement from Customer and the Outlets for the following:
- (i) An amount reflecting reimbursement for all funding previously advanced by Pepsi but not earned by the Customer pursuant to the terms of this Agreement. With regard to the Annual Support Funds, the amount of such reimbursement shall be determined by multiplying Annual Support Funds by a fraction, the numerator of which is the number of months remaining in the Year in which the Agreement is terminated at the time such termination occurs and the denominator of which is 12 (twelve);
 - (ii) An amount reflecting reimbursement for the cost of installation, service and refurbishing of Equipment provided during the Term and the cost of removal of all Equipment that has been installed in the Outlets, if applicable; and
 - (iii) An amount as liquidated damages, for lost sales suffered by Pepsi as a result of such termination, equal to the sum of: (a) product of \$5 multiplied by the projected number of Gallons of Postmix, LCT and FB Products that Customer would have been expected to purchase during the remainder of the Term based on the Volume Threshold and the Customer's average annualized purchase rate and (b) the product of \$10 multiplied by the projected number of 24-pk case equivalents of Packaged Products that Customer would have been expected to purchase during the remainder of the Term based on the Volume Threshold and the Customer's average annualized purchase rate.
- (C) **Expiration.** Upon expiration of this Agreement, if Customer has not entered into a further agreement with Pepsi for the purchase of the Products, Customer shall surrender to Pepsi all Equipment installed in the Outlets, whether leased, loaned or otherwise made available by Pepsi.
- (D) **Right of Offset.** Pepsi reserves the right to withhold payments due hereunder as an offset against amounts not paid by Customer or its Outlets for Products ordered from and delivered by Pepsi pursuant to this Agreement.
- (E) **Non-Disclosure.** Except as may otherwise be required by law or legal process, neither party shall disclose to unrelated third parties the terms and conditions of this Agreement without the consent of the other.
- (F) **Indemnification.** Pepsi will indemnify and hold the Customer harmless from any and all suits, actions, claims, demands, losses, costs, damages, liabilities, fines, expenses and penalties (including reasonable attorneys' fees) arising out of: (i) its breach of any term or condition of this Agreement; (ii) product liability suits resulting from the use or consumption of the Products; and/or (iii) the negligence or willful misconduct of Pepsi. The Customer will indemnify and hold Pepsi, its subsidiaries, affiliates or assigns harmless from and against any

and all suits, actions, claims, demands, losses, costs, damages, liabilities, fines, expenses and penalties (including reasonable attorneys' fees) arising out of: (i) its breach of any term or condition of this Agreement; and/or (ii) the negligence or willful misconduct of the Customer.

- (G) **Assignment.** In the event that a third party acquires Customer or all or a group of the Outlets, or if Customer is acquired or merges with a third party, Customer will, in connection with such transaction, cause the acquiring party/merged entity, in writing, to ratify this Agreement and assume all of the obligations of Customer hereunder. In the event that Customer does not deliver written evidence of such ratification and assumption of this Agreement by the acquiring party/merged entity within ten (10) days following the closing of the transaction, the Customer will be in breach of this Agreement and Pepsi may, at its option, terminate this Agreement effective immediately and Customer will pay to Pepsi all sums specified in Section 7(B) herein. The Agreement shall not be otherwise assignable without the express written consent of Pepsi.
- (H) **Governing Law.** This Agreement shall be governed by the laws of the State of Wisconsin without regard to conflict of laws principles.
- (I) **Price Discrepancy.** Any price discrepancy claim must be submitted to Pepsi within 365 days of the date of the invoice in question. If the Customer makes a price discrepancy claim within 90 days of the invoice date, the Customer must submit a written request specifying the particular Product, amount in dispute and reason for the dispute. This request should be addressed to:

Accounts Receivable
Pepsi-Cola Customer Service Center
P.O. Box 10
Winston-Salem, North Carolina 27102.

If the Customer makes a price discrepancy claim from 91 to 365 days after the date of invoice, in addition to the written request as specified above, the Customer must submit to Pepsi a copy of the invoice in question, copies of any check remittances pursuant to the invoice in question and any additional supporting documentation.

- (J) **Tax.** The Customer acknowledges and agrees that neither Pepsi nor its affiliates shall be responsible for any taxes payable, fees or other tax liability incurred by the Customer in connection with the consideration or any other fees payable by Pepsi under this Agreement. Pepsi shall not be assessed common area maintenance fees, taxes or other charges based on its occupation of the space allocated to its Equipment at the Outlets.
- (K) **Force Majeure.** Pepsi will not be responsible for any delay or lack of delivery resulting directly or indirectly from any foreign or domestic embargo, product detention, seizure, act of God, insurrection, war and/or continuance of war, the passage or enactment of any law ordinance, regulation, ruling, or order interfering directly or indirectly with or rendering more burdensome the purchase, production, delivery or payment hereunder, including the lack of the usual means of transportation due to fire, flood, explosion, riot, strike or other acts of nature

or man that are beyond the control of Pepsi or that of the suppliers to Pepsi unless such contingency is specifically excluded in another part of this Agreement. Subject to the provisions below, this Agreement will be suspended as to both Product and delivery during any of the above force majeure contingencies. Any and all suspended deliveries will resume after such contingencies cease to exist, if possible, and this Agreement will resume in accordance with its terms, unless otherwise provided for herein.

- (L) **Release, Discharge or Waiver.** No release, discharge or waiver of any provision hereof shall be enforceable against or binding upon either party hereto unless in writing and executed by both parties hereto. Neither the failure to insist upon strict performance of any of the agreements, terms, covenants or conditions hereof, nor the acceptance of monies due hereunder with knowledge of a breach of this Agreement, shall be deemed a waiver of any rights or remedies that either party hereto may have or a waiver of any subsequent breach or default in any of such agreements, terms, covenants or conditions.
- (M) **Relationship of the Parties.** The parties are independent contractors with respect to each other. Nothing contained in this Agreement will be deemed or construed as creating a joint venture partnership between the parties.
- (N) **Effect of Headings.** The headings and subheadings of the sections of this Agreement are inserted for convenience of reference only and shall not control or affect the meaning or construction of any of the agreements, terms, covenants and conditions of this Agreement in any manner.
- (O) **Construction.** This Agreement has been fully reviewed and negotiated by the parties hereto and their respective legal counsel. Accordingly, in interpreting this Agreement, no weight shall be placed upon which party hereto or its counsel drafted the provision being interpreted. Wherever this Agreement provides for one party hereto to provide authorization, agreement, approval or consent to another party hereto, or provides for mutual agreement of the parties hereto, such authorization, approval, agreement or consent shall, except as may otherwise be specified herein, be given in such party's reasonable judgment and reasonable discretion, and shall be in writing unless otherwise mutually agreed by the parties. If any term or provision of this Agreement shall be found to be void or contrary to law, such term or provision shall, but only to the extent necessary to bring this Agreement within the requirements of law, be deemed to be severable from the other terms and provisions hereof, and the remainder of this Agreement shall be given effect as if the parties had not included the severed term herein.
- (P) **Counterparts.** This Agreement may be executed in two or more counterparts, each of which shall be deemed an original but all of which together shall constitute one and the same instrument.
- (Q) **Further Assurances.** Each party hereto shall execute any and all further documents or instruments and take all necessary action that either party hereto may deem reasonably necessary to carry out the proper purposes of this Agreement.

- (R) **Notices.** Unless otherwise specified herein, all notices, requests, demands, consents, and other communications hereunder shall be transmitted in writing and shall be deemed to have been duly given when hand delivered, upon delivery when sent by express mail, courier, overnight mail or other recognized overnight or next day delivery service, or three (3) days following the date mailed when sent by registered or certified United States mail, postage prepaid, return receipt requested, or by facsimile, with a confirmation copy sent by recognized overnight courier, next day delivery, addressed as follows:

If to Pepsi:

Pepsi Beverages Company
325 W 20th Avenue
Oshkosh, WI 54902
Thomas Maggio
Attn: Channel Manager, FoodService

With a copy to (which shall not constitute notice):

Pepsi Beverages Company
One Pepsi Way
Somers, NY 10589
Attn: Legal Department

If to Customer:

Winnebago County Parks Department
625 E County Road Y, Suite 500
Oshkosh, WI 54901
Attn: _____

- (S) **Right of First Negotiation/Refusal.** As of the commencement of this Agreement until ninety (90) days prior to the expiration of the Term, the Customer hereby agrees to grant Pepsi exclusive negotiation rights with respect to extending the current Agreement or entering into a new agreement for Beverage pouring rights at the Outlets upon expiration of the current Term. Thereafter, if the parties have not entered into a new agreement, the Customer shall be free to enter into discussions/negotiations with third parties except that Customer shall grant Pepsi the absolute right of first refusal to match any bona fide offers made by a third party with respect to Beverage pouring rights/sales at the Outlets. The Customer shall provide Pepsi with details of any such bona fide offers, and Pepsi shall have a fifteen (15) day window to decide whether it will match such offer and exercise its right of first refusal. The parties agree that beverage type/category and not brand names shall be considered for the purposes of determining a match. In the event that Pepsi declines to match such offer, or fails to respond within the fifteen (15) day period, then Customer shall be free to enter into an agreement with

any third party based on terms and conditions equal or favorable to those presented to Pepsi in connection with the notice specified herein.

- (T) **Limitations/Offset Rights.** Pepsi reserves the right to limit quantities, withhold or deduct funding as an offset to amounts not paid by Customer or terminate this Agreement if the Customer (i) sells Products directly or indirectly for resale outside of the Pepsi's exclusive territory where the Outlet operates, (ii) purchases Products outside Pepsi's exclusive territory where the Outlet operates and resells such Products within Pepsi's exclusive territory or (iii) does not comply with Pepsi's payment terms or makes an unauthorized deduction from amounts due.
- (U) **Entire Agreement.** This Agreement contains the entire agreement between the parties hereto regarding the subject matter hereof and supersedes all other agreements between the parties. This Agreement may be amended or modified only by a writing signed by each of the parties.
- (V) **Customer Representations.** Customer represents and warrants to Pepsi that the execution, delivery and performance of this Agreement by Customer will not violate any agreements with, or rights of, third parties. The Customer and undersigned represent that the undersigned is duly authorized and empowered to bind the Customer to the terms and conditions of this Agreement for the duration of the Term.
- (W) **Insurance.** Pepsi agrees to maintain, at all times during the Term and for a period of three (3) years thereafter, a comprehensive program of risk retention and insurance with such insurance carriers and in such amounts of insurance coverage reasonably acceptable to Customer. Pepsi shall include Customer, and their respective officers, directors, employees, agents, representatives and successors and assigns on a certificate of insurance, as additional insured with respect to Pepsi's negligence.

IN WITNESS WHEREOF, the undersigned have caused this Agreement to be duly executed as of the date set forth below.

Bottling Group, LLC

Winnebago County Parks Department

By: _____

Sign: _____

Print Name: _____

Print Name: _____

Title: _____

Title: _____

Date: _____

Date: _____

Exhibit B
Products and Prices

Customer acknowledges and agrees (and shall require that any third parties or Food Service Providers purchasing Products through this Agreement agree) that Pepsi shall be entitled to pass-through any incremental fees, deposits, taxes or other governmentally imposed charges (whether local, state, federal or judicially imposed) and that the pass-through of any such governmentally imposed fees, deposits, taxes or charges on the Products shall not be deemed as a price increase subject to any pricing cap or notification restrictions that may be specified in this Agreement.

New Contract Pricing effective 1/1/2016

20 oz Soda \$22.00 per case of 24

20 oz Water \$13.00 per case of 24

20 oz Gatorade \$26.00 per case of 24

1 **252-12016**

2 **RESOLUTION: Authorize the Sheriff's Department to Accept a \$225,000 Grant from the**
3 **Department of Justice to be Applied Towards the Purchase of a New**
4 **Bearcat Tactical Armored Vehicle at a Cost of \$274,026, with the**
5 **Remaining Balance from the Sale of the Existing Vehicle**
6

7 **TO THE WINNEBAGO COUNTY BOARD OF SUPERVISORS:**

8 **WHEREAS**, the original Bearcat Tactical Armored Vehicle was purchased in 2005 from the proceeds of a
9 \$178,813 grant for that purpose; and

10 **WHEREAS**, the 2005 Federal grant was issued to Winnebago County as a pass through grant as
11 Winnebago County is the response team for this Region; and

12 **WHEREAS**, the existing Bearcat Tactical Armored Vehicle will be sold, with the proceeds of approximately
13 \$49,026 to be applied toward the purchase of a replacement vehicle; and

14 **WHEREAS**, the replacement will have a total cost of \$274,026; and

15 **WHEREAS**, a new grant of \$225,000 will pay the balance; and

16 **WHEREAS**, this vehicle is very valuable in that it helps protect the response team during critical response
17 incidents.

18
19 **NOW, THEREFORE, BE IT RESOLVED** by the Winnebago County Board of Supervisors that it hereby
20 authorizes the purchase of a new Bearcat Tactical Armored Vehicle at a total cost of \$274,026, with funds to pay for
21 the replacement vehicle to come from the proceeds of the sale of the existing vehicle, and a \$225,000 grant from the
22 Department of Justice.

23 **Fiscal Note:** This Resolution is cost neutral. Funds to pay for the replacement vehicle will come from proceeds of
24 the existing vehicle plus the grant revenue.

25
26 Respectfully submitted by:

27 **JUDICIARY AND PUBLIC SAFETY COMMITTEE**

28 Committee Vote: **4-0**

29 Respectfully submitted by:

30 **PERSONNEL AND FINANCE COMMITTEE**

31 Committee Vote: **5-0**

32 Vote Required for Passage: **Two-Thirds of Membership**

33
34 Approved by the Winnebago County Executive this ____ day of _____, 2016.

35
36 _____
37 Mark L Harris
38 Winnebago County Executive

1	2
2	3
3	4
4	5
5	6
6	7
7	8
8	9
9	10
10	11
11	12
12	13
13	14
14	15
15	16
16	17
17	18
18	19
19	20
20	21
21	22
22	23
23	24
24	25
25	26
26	27
27	28
28	29
29	30
30	31
31	32
32	33
33	34

TO THE WINNEBAGO COUNTY BOARD OF SUPERVISORS:

WHEREAS, the current structure is badly deteriorating and is past the point for which corrective maintenance is a solution to the many problems; and

WHEREAS, the project is on schedule to be opened for bids in Spring 2016, with construction estimated to begin in June 2016 and completed by Fall 2016.

NOW, THEREFORE, BE IT RESOLVED by the Winnebago County Board of Supervisors that it hereby authorizes funding in the amount of \$640,000 for the reconstruction of the CTH G Bridge. That funding will consist of Wisconsin Department of Transportation, Surface Transportation Program Bridge Funding, in the amount of \$410,000, and un-utilized funding from another Highway Capital Project in the amount of \$230,000.

HIGHWAY COMMITTEE

PERSONNEL AND FINANCE COMMITTEE

Vote Required for Passage: **Two-Thirds of Membership**

Approved by the Winnebago County Executive this day of , 2016.

Page 1

- 1
- 2
- 3
- 4
- 5
- 6
- 7
- 8
- 9
- 10
- 11
- 12
- 13
- 14
- 15
- 16
- 17
- 18
- 19
- 20
- 21
- 22
- 23
- 24
- 25
- 26
- 27
- 28
- 29
- 30
- 31
- 32
- 33
- 34
- 35
- 36

TO THE WINNEBAGO COUNTY BOARD OF SUPERVISORS:

WHEREAS, the Wisconsin DOT has issued an order that Winnebago County process a conveyance of two parcels located near the intersection of STH 116 and STH 91. The two parcels together are approximately 1.4 acres in size.

BE IT FURTHER RESOLVED by the Winnebago County Board of Supervisors that it hereby authorizes County officials to sign a Quit Claim Deed and record the transaction in the Register of Deeds Office.

HIGHWAY COMMITTEE

Vote Required for Passage: **Majority of Those Present**

Approved by the Winnebago County Executive this _____ day of _____, 2016.

34
35
36

TO THE WINNEBAGO COUNTY BOARD OF SUPERVISORS:

WHEREAS, the purchase of these parcels was funded by the Wisconsin Department of Transportation (DOT). It was common at that time for the Wisconsin DOT to purchase right-of-way for highway projects through the counties that bordered the projects and for the properties to be “held in trust” for the State; and

WHEREAS, The Wisconsin DOT has issued an order that Winnebago County process a conveyance of two parcels located near the interchange of I-41 & STH 21. The two parcels together are approximately 2.0 acres in size.

NOW, THEREFORE, BE IT RESOLVED by the Winnebago County Board of Supervisors that it hereby authorizes the conveyance of two parcels of right-of-way located at the interchange of I-41 & STH 21 back to the Wisconsin Department of Transportation.

BE IT FURTHER RESOLVED by the Winnebago County Board of Supervisors that it hereby authorizes Winnebago County officials to sign a Quit Claim Deed and record the transaction in the Register of Deeds Office.

Respectfully submitted by:

HIGHWAY COMMITTEE

Committee Vote: **3-0**

Vote Required for Passage: **Majority of Those Present**

Approved by the Winnebago County Executive this day of , 2016.

Mark L Harris
Winnebago County Executive

1 **256-12016**

2
3 **RESOLUTION: Authorize Agreement to Create Park View Health Center Endowment Fund**

4
5
6 **TO THE WINNEBAGO COUNTY BOARD OF SUPERVISORS:**

7 **WHEREAS**, the Thomas A Plein Foundation Inc desires to create an endowment fund for the benefit of Park
8 View Health Center; and

9 **WHEREAS**, said fund would be used for the purpose of accepting gifts from donors so as to create an
10 endowment to fund care needs of residents, both aggregately and individually, at Park View Health Center; and

11 **WHEREAS**, said fund shall accept gifts from the Thomas A Plein Foundation, as well as other donors, for the
12 above stated purpose; and

13 **WHEREAS**, pursuant to the attached proposed Fund Agreement, the Winnebago County Executive, in
14 consultation with the Park View Health Center Administrator and the Park View Health Center Committee of the
15 Winnebago County Board of Supervisors would be responsible for establishing guidelines for the distribution of
16 monies from said fund on January 31 of each year, and of advising the Foundation of any distribution of said funds,
17 subject to review by the Thomas A Plein Foundation to ensure that the distribution of said funds are in compliance
18 with the designated purpose of that fund; and

19 **WHEREAS**, your undersigned Committees believe that the establishment of said endowment fund would be
20 in the best interests of Park View Health Center and Winnebago County .

21
22 **NOW, THEREFORE, BE IT RESOLVED** by the Winnebago County Board of Supervisors that it hereby
23 authorizes the establishment of an endowment fund at Park View Health Center for the purposes which are
24 described above.

25
26 Respectfully submitted by:

27 **PARKVIEW HEALTH CENTER COMMITTEE**

28 Committee Vote: **5-0**

29 Respectfully submitted by:

30 **PERSONNEL AND FINANCE COMMITTEE**

31 Committee Vote: **5-0**

32 Vote Required for Passage: **Majority of Those Present**

33
34 Approved by the Winnebago County Executive this ____ day of _____, 2016.

35
36
37 _____
38 Mark L Harris
39 Winnebago County Executive

**AGREEMENT TO CREATE
PARK VIEW HEALTH CENTER
ENDOWMENT FUND**

WHEREAS, Winnebago County (hereinafter referred to as "County"), whose address is 415 Jackson Street, Oshkosh, Wisconsin 54903 is a municipal corporation created pursuant to the laws of the State of Wisconsin; and

WHEREAS, the Thomas A. Plein Foundation, Incorporated (hereinafter referred to as "Foundation"), whose address is P.O. Box 97318, Las Vegas, NV 89193, is a non-profit, charitable foundation which is incorporated under the laws of the State of Wisconsin; and

WHEREAS, Winnebago County desires to create an endowment fund for the benefit of Park View Health Center to which donors may make gifts to benefit residents at Park View Health Center, Winnebago, Wisconsin, a licensed nursing home which is owned and operated by Winnebago County; and

WHEREAS, the Foundation is willing and able to establish and maintain such an endowment fund for said purpose.

NOW, THEREFORE, IT IS HEREBY AGREED BY THE PARTIES AS FOLLOWS:

1. That County, by resolution of its County Board of Supervisors and approval of its County Executive, shall authorize the Foundation to create a fund to be known as the "Thomas A. Plein Foundation Endowment Fund for Park View Health Center " (hereinafter referred to as "Fund").

2. That the purpose of the Fund shall be to accept gifts from donors which shall be used to create an endowment to fund care needs of residents, both in the aggregate and individually, of Park View Health Center. Monies in the Fund shall not be used to supplement the operating budget of Park View Health Center.

3. Park View Health Center funds shall be identified as such by the Foundation in the course of the administration and distribution thereof. It shall be structured as a designated fund, a component fund of the Foundation whose beneficiaries have been specified by a donor or governing board.

4. The income of the Fund shall be distributed annually for such purposes consistent with those set forth in the Foundation's Articles and By-laws as now exist or may hereinafter be amended. Distribution shall ordinarily be made out of income only, so that the principal of the Fund may be preserved and maintained as an endowment. However, the Board of Governors of the Foundation may, if it considers unusual circumstances to exist which may make it advisable to invade principal, authorize distributions from the principal of the Fund for the designated purpose of the Fund.

5. The Winnebago County Executive, in consultation with the Administrator of Park View Health Center and the Park View Health Center Committee of the Winnebago County Board of Supervisors, shall be responsible for setting the guidelines for distributions from the Fund and shall advise the Foundation as to the amount and timing of such distributions. Distributions from the Fund shall occur annually, on the 31st day of January or on such other date as agreed to between the Foundation and the County Executive.

The Foundation shall review the proposed distributions to ensure that they are not inconsistent with the Foundation's corporation articles and by-laws as amended and are in compliance with the designated purpose of the Fund. If deemed appropriate, the Foundation may request evidence of authorization by the County to direct the amount and timing of distributions from this Fund, based upon the market value of the Fund.

6. Notwithstanding anything herein to the contrary, the Fund shall at all times be held and administered in accordance with the provisions of the Articles and By-laws of the Foundation's Corporation which are hereby accepted and agreed to by the undersigned, including those provisions relating to amendment, termination and variance from donor's direction. The undersigned acknowledges that under the provisions of the Articles and By-laws and as required by regulations promulgated pursuant to the Internal Revenue Code of 1986, as amended, the Foundation has explicit authority to re-direct the assets of any fund it administers. However, the Foundation does not anticipate exercising such authority unless, in the opinion of the Board of Governors, the purpose for which the Fund was established become unnecessary, incapable of fulfillment, or inconsistent with the needs of the community. It is agreed to by the parties that such a purpose will be deemed to have occurred should the County terminate operation of Park View Health Center as a licensed nursing home or a licensed care facility for the elderly and disabled in the future or should the County sell such facility to a for profit entity.

7. It is intended that the Fund shall be a component part of the Foundation and that nothing in this Agreement shall affect the status of the Foundation as an entity that is a qualified charitable organization. This Agreement shall be interpreted in a manner consistent with the intention and so far as to

conform to the requirements of the Internal Revenue Code and any regulations promulgated pursuant thereto applicable to the intended status of the Foundation.

8. Should any disputes occur between the parties to this Agreement, the parties agree to submit such disputes, in good faith, to non-binding mediation before commencement of any of any litigation or arbitration in relationship to said disputes.

9. That this Agreement shall be governed by the laws of the State of Wisconsin.

10. Should any part of this Agreement be deemed invalid by a court of law, such a decision shall not serve to invalidate other parts of this Agreement.

Dated this 18th day of December, 2015.

WINNEBAGO COUNTY

By: _____

Mark Harris
Winnebago County Executive

By: _____

Susan T. Ertmer
Winnebago County Clerk

By: _____

Matthew Frazier, President
Thomas A. Plein Foundation

1 **257-12016**

2 **RESOLUTION: Authorize an Amount Not to Exceed \$600,000 for the Purpose of Hiring of**
3 **an Architect/Engineer to Design a New Airport Terminal/Office Building.**
4

5 **TO THE WINNEBAGO COUNTY BOARD OF SUPERVISORS:**

6 **WHEREAS**, the Facilities and Property Management Department has investigated major repairs that are
7 needed at the current airport terminal/office building; and

8 **WHEREAS**, the Department along with your undersigned Committees have determined that because of the
9 reduction of use of the current facility, it does not make sense financially to continue to invest in the current facility for
10 major repairs and maintenance; and

11 **WHEREAS**, based on current and projected future needs, the current facility is too large to justify the
12 investment of additional funds for major repairs that are needed; and

13 **WHEREAS**, a preliminary study has been completed estimating the current and future needs and estimated
14 size and cost of a new facility; and

15 **WHEREAS**, it is now necessary to solicit proposals from architects to design a new facility that is sized better
16 to serve the needs of the airport; and

17 **WHEREAS**, it is estimated that an amount of \$600,000 would be needed for this purpose; and

18 **WHEREAS**, any part of this funding that is not used for architectural and design work will be appropriated to
19 the project construction budget.

20
21 **NOW, THEREFORE, BE IT RESOLVED** by the Winnebago County Board of Supervisors that it hereby
22 appropriates \$600,000 to the airport terminal/office building project for the purpose of hiring an architect to design a
23 new replacement facility.

24
25 **BE IT FURTHER RESOLVED** by the Winnebago County Board of Supervisors that funds to cover this
26 expense shall be advanced from the General Fund with such fund being reimbursed with proceeds from a
27 subsequent bond issue.

28 Respectfully submitted by:

29 **AVIATION COMMITTEE**

30 Committee Vote: **5-0**

31 Respectfully submitted by:

32 **FACILITIES AND PROPERTY MANAGEMENT COMMITTEE**

33 Committee Vote: **3-2**

34 Respectfully submitted by:

35 **PERSONNEL AND FINANCE COMMITTEE**

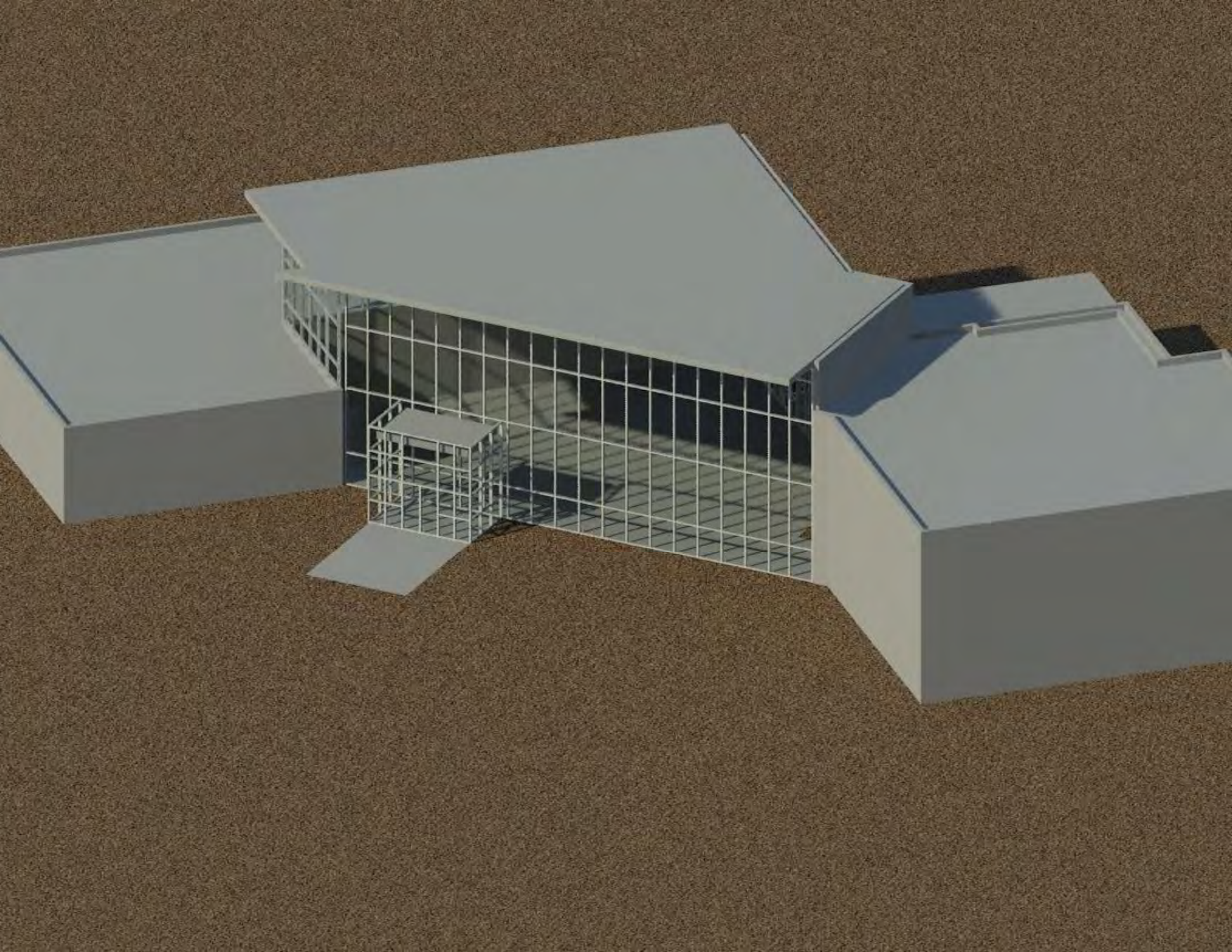
36 Committee Vote: **5-0**

37 Vote Required for Passage: **Three-Fourth of Membership**

38
39 Approved by the Winnebago County Executive this ____ day of _____, 2016.

40
41
42 _____
43 Mark L Harris
 Winnebago County Executive







New Aviation Business Center
Wittman Regional Airport
525 W. 20th Ave
Oshkosh,

SHEET DESCRIPTION

TWO STORY
OPTION #2
FLOOR PLANS

PROJECT MANAGER:
PROJ NO: A510-015
DATE: 10-24-05
PRELIMINARY
DRAWING NO
A200.2

OMNI
ASSOCIATES
ONE SYSTEMS DRIVE PHONE (703) 721-8800
APPROX. TX, W 54314 FAX (703) 830-1508

© 2013 Qadast Associates, Inc. - This design, drawing and detail is the copyrighted property of Qadast Associates, Inc. No part shall be copied, duplicated, distributed or reproduced in any manner without written consent of Qadast Associates, Inc.

- 1
- 2
- 3
- 4
- 5
- 6
- 7
- 8
- 9
- 10
- 11
- 12
- 13
- 14
- 15
- 16
- 17
- 18
- 19
- 20
- 21
- 22
- 23
- 24
- 25
- 26
- 27
- 28
- 29
- 30
- 31
- 32
- 33
- 34
- 35
- 36

TO THE WINNEBAGO COUNTY BOARD OF SUPERVISORS:

WHEREAS, the Winnebago County Department of Human Services will administer and act as the lead agent on behalf of twelve counties for said grant, including organizing and contracting trainers, and receiving and disbursing these funds to local law enforcement entities upon proof of training; and

NOW, THEREFORE, BE IT RESOLVED by the Winnebago County Board of Supervisors that it hereby authorizes the Winnebago County Department of Human Services to accept a Crisis Intervention Grant in the amount of \$501,333 and appropriate funds to the Program Expenses Account.

HUMAN SERVICES BOARD

PERSONNEL AND FINANCE COMMITTEE

Vote Required for Passage: **Two-Thirds of Membership**

Approved by the Winnebago County Executive this _____ day of _____, 2016.

Page 1

1 **259-12016**

2
3 **RESOLUTION: Authorize the Transfer of \$29,500 from the General Hospital Psychiatric Expense**
4 **Account to the Automobile Expense Accounts Within the Various Divisions of the**
5 **Department of Human Services 2015 Budget to Cover Excess Travel Costs**
6 **Incurred During 2015**
7

8
9 **TO THE WINNEBAGO COUNTY BOARD OF SUPERVISORS:**

10 **WHEREAS**, the Winnebago County Department of Human Services incurs a large amount of travel
11 expenses each year for client services/visits, conferences, and training; and

12 **WHEREAS**, the Federal mileage rate increased by more than was anticipated when the 2015 Budget was
13 prepared; and

14 **WHEREAS**, the Department will now be short approximately \$29,500 in the Automobile Allowance accounts
15 in the various divisions within the Department; and

16 **WHEREAS**, it is projected that there will be a surplus of funds in the General Hospital Psychiatric Account
17 within the Department; and

18 **WHEREAS**, the Department is requesting authorization to transfer funds from the General Hospital
19 Psychiatric Account to the Automobile Allowance Accounts within the different divisions of the Department to cover
20 the projected overages; and

21 **WHEREAS**, no additional funds are being requested from the General Fund.

22
23 **NOW, THEREFORE, BE IT RESOLVED** by the Winnebago County Board of Supervisors that it hereby
24 authorizes the transfer of \$29,500 from the General Hospital Psychiatric Account to the Auto Allowance Accounts of
25 the various divisions within the Winnebago County Department of Human Services 2015 Budget.

26
27 **Fiscal Note:** This Resolution is cost neutral. There are sufficient funds in other accounts to cover the overages
28 with requesting funds from the General fund

29 Respectfully submitted by:

30 **HUMAN SERVICES BOARD**

31 Committee Vote: **8-0**

32 Respectfully submitted by:

33 **PERSONNEL AND FINANCE COMMITTEE**

34 Committee Vote: **5-0**

35 Vote Required for Passage: **Two-Thirds of Membership**

36
37 Approved by the Winnebago County Executive this ____ day of _____, 2016.

38
39 _____
40 Mark L Harris
41 Winnebago County Executive

- 1
- 2
- 3
- 4
- 5
- 6
- 7
- 8
- 9
- 10
- 11
- 12
- 13
- 14
- 15
- 16
- 17
- 18
- 19
- 20
- 21
- 22
- 23
- 24
- 25
- 26
- 27
- 28
- 29
- 30
- 31
- 32
- 33
- 34
- 35
- 36
- 37
- 38
- 39
- 40
- 41
- 42
- 43

TO THE WINNEBAGO COUNTY BOARD OF SUPERVISORS:

WHEREAS, several Winnebago County Board Supervisors have questioned why the East Central Wisconsin Regional Planning Commission (ECWRPC), which is supported by Winnebago County in the amount of \$200,000, does not provide this review or update; and

WHEREAS, the health of the Winnebago Pool Lakes System requires multi-jurisdictional coordination, and the ECWRPC was established under § 66.0309, Wis Stats, to specifically foster intergovernmental coordination; and

NOW, THEREFORE, BE IT RESOLVED by the Winnebago County Board of Supervisors that it hereby requests that Winnebago County give preference to the utilization of the East Central Wisconsin Regional Planning Commission to coordinate efforts to review/update the *1989 Lake Winnebago Comprehensive Management Plan* and other activities as deemed appropriate by its Board of Directors.

BE IT FURTHER RESOLVED by the Winnebago County Board of Supervisors that a copy of this Resolution be transmitted to the Calumet County Board, the Fond du Lac County Board, and the East Central Wisconsin Regional Planning Commission as an expression of Winnebago County's support and desire for collaborative resource management.

LAND CONSERVATION COMMITTEE

Vote Required for Passage: **Majority of Those Present**

Mark L Harris
Winnebago County Executive

261-12016

ORDINANCE: Amend Sections 3.05(4)b.1. of the General Code of Winnebago County: County Attendance at Meetings or Schools

TO THE WINNEBAGO COUNTY BOARD OF SUPERVISORS:

WHEREAS, at its December 2015 meeting, the Winnebago County Board of Supervisors approved revisions to Section 3.05 of the General Code of Winnebago County; and

WHEREAS, shortly after passage of said amendment, the Winnebago County Board of Supervisors discovered that issues continue to exist as to meal allowances and approvals within that Ordinance; and

WHEREAS, it is necessary to further amend Section 3.05 of the General Code of Winnebago County at this time to address such issues.

NOW, THEREFORE, BE IT ORDAINED by the Winnebago County Board of Supervisors as follows: That the following Sections of the General Code of Winnebago County be amended to read as follows:

3.05 ATTENDANCE AT MEETINGS OR SCHOOLS

(4) EXPENSE REIMBURSEMENT:

(b) Lodging and Meals Expense:

1. The following schedule consists of maximum reimbursable expenses for lodging and meals:

Overnight Lodging - Single room cost.

\$10.00 Breakfast

\$12.00 Lunch

\$23.00 Supper

These are the ~~maximum allowable~~ amounts that Winnebago County will reimburse for meals including tips. ~~Meal costs incurred above these limits will not be reimbursed.~~ **Meal costs that exceed these amounts may be approved by the authorizing agent provided they are reasonable for the location of the meeting.** Submission of meal receipts is required for all meals.

Respectfully submitted by:

PERSONNEL AND FINANCE COMMITTEE

Committee Vote: **4-0-1**

Vote Required for Passage: **Majority of Those Present**

Approved by the Winnebago County Executive this ____ day of _____, 2016.

Mark L Harris
Winnebago County Executive



PHILLIPS TAX & ACCOUNTING, INC.

Enrolled to practice before the Internal Revenue Service • Accredited Tax Advisor • Certified QuickBooks® ProAdvisor

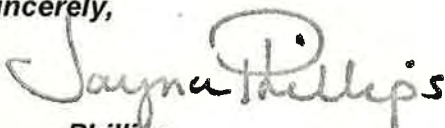
December 8, 2015

**WINNEBAGO COUNTY FAIR ASSOCIATION
3017 STATE ROAD 116
OMRO, WISCONSIN 54963**

Gentlemen:

The accompanying Balance Sheet of WINNEBAGO COUNTY FAIR ASSOCIATION, a Wisconsin Non-Profit Corporation exempt under code section 501(c)(3), as of November 30, 2015 and the related Statements of Income for the years ended November 30, were compiled by me on the information made available to me by WINNEBAGO COUNTY FAIR ASSOCIATION. I have not audited these statements and accordingly do not express an opinion on them. The Statements were prepared in conformity with income tax accounting principles.

Sincerely,


Jayna Phillips

Winnebago County Fair Association
Balance Sheet
As of November 30, 2015

	Nov 30, 15	Nov 30, 14	\$ Change	% Change
ASSETS				
Current Assets				
Checking/Savings				
Cash on Hand				
Associated Bank - Premium Accou	0.00	33,526.12	-33,526.12	-100.0%
Credit Union - Checking Account	1,312.34	0.00	1,312.34	100.0%
Credit Union - Money Market	65,566.91	0.00	65,566.91	100.0%
Credit Union - Savings	1,272.00	0.00	1,272.00	100.0%
FNB - Checking	14,609.95	10,328.04	4,281.91	41.5%
Total Cash on Hand	82,761.20	43,854.16	38,907.04	88.7%
Checking	0.00	11.15	-11.15	-100.0%
Total Checking/Savings	82,761.20	43,865.31	38,895.89	88.7%
Accounts Receivable				
Accounts Receivable	0.00	-2,389.00	2,389.00	100.0%
Total Accounts Receivable	0.00	-2,389.00	2,389.00	100.0%
Total Current Assets	82,761.20	41,476.31	41,284.89	99.5%
Fixed Assets				
Fixed Assets				
Equipment	14,129.88	14,129.88	0.00	0.0%
R/D - Equipment	-14,129.88	-14,085.86	-44.02	-0.3%
Total Fixed Assets	0.00	44.02	-44.02	-100.0%
Total Fixed Assets	0.00	44.02	-44.02	-100.0%
TOTAL ASSETS	82,761.20	41,520.33	41,240.87	99.3%
LIABILITIES & EQUITY				
Liabilities				
Current Liabilities				
Accounts Payable				
Accounts Payable	0.00	-1,891.50	1,891.50	100.0%
Total Accounts Payable	0.00	-1,891.50	1,891.50	100.0%
Other Current Liabilities				
Federal Taxes				
Federal PR Taxes due	260.90	597.80	-336.90	-56.4%
Total Federal Taxes	260.90	597.80	-336.90	-56.4%
State Taxes				
Accru. Unemploy Compen. - State	7.02	20.54	-13.52	-65.8%
Employee WI Withholding	82.58	35.54	47.04	132.4%
Total State Taxes	89.60	56.08	33.52	59.8%
Vendor Deposits - Prepaid	530.00	0.00	530.00	100.0%
Total Other Current Liabilities	880.50	653.88	226.62	34.7%
Total Current Liabilities	880.50	-1,237.62	2,118.12	171.1%
Total Liabilities	880.50	-1,237.62	2,118.12	171.1%
Equity				
Unrestricted Net Assets	42,757.95	-221.69	42,979.64	19,387.3%
Net Income	39,122.75	42,979.64	-3,856.89	-9.0%
Total Equity	81,880.70	42,757.95	39,122.75	91.5%
TOTAL LIABILITIES & EQUITY	82,761.20	41,520.33	41,240.87	99.3%

Winnebago County Fair Association Profit & Loss

December 2014 through November 2015

	Dec '14 - Nov 15	Dec '13 - Nov 14	\$ Change	% Change
Ordinary Income/Expense				
Income				
Camping Income				
Reserved Camping Fee	1,642.86	1,725.00	-82.14	-4.8%
Camping Income - Other	10,216.66	10,750.00	-533.34	-5.0%
Total Camping Income	11,859.52	12,475.00	-615.48	-4.9%
Income				
Administrative Income				
Interest	273.50	0.00	273.50	100.0%
Other Administrative Income	0.00	-29.52	29.52	100.0%
Sale of Pens	2,915.00	0.00	2,915.00	100.0%
Total Administrative Income	3,188.50	-29.52	3,218.02	10,901.2%
Advertisements				
Raffle Book Ads	0.00	300.00	-300.00	-100.0%
Advertisements - Other	500.00	0.00	500.00	100.0%
Total Advertisements	500.00	300.00	200.00	66.7%
Aid - County & Other Government	50,000.00	50,000.00	0.00	0.0%
Aid - State	5,870.97	6,067.61	-196.64	-3.2%
Contest Entry Fees				
Tractor Pull Entry Fee				
County Tractor Pull Entry Fee	2,000.00	2,180.00	-180.00	-8.3%
Total Tractor Pull Entry Fee	2,000.00	2,180.00	-180.00	-8.3%
Contest Entry Fees - Other	4,807.50	0.00	4,807.50	100.0%
Total Contest Entry Fees	6,807.50	2,180.00	4,627.50	212.3%
Entrance Fees				
Back Gate Admission	1,983.00	1,703.00	280.00	16.4%
Gate Receipts				
Gate Receipts - Carnival				
Gate Rec-Carnival - Fri	604.00	28,664.00	-28,060.00	-97.9%
Gate Rec-Carnival - Sat	53,004.00	48,044.00	4,960.00	10.3%
Gate Rec-Carnival - Sun	9,920.00	8,672.00	1,248.00	14.4%
Gate Rec-Carnival - Thurs	17,567.00	15,417.00	2,150.00	14.0%
Gate Rec-Carnival - Wed	18,739.00	15,315.00	3,424.00	22.4%
Gate Rec.- Carnival-Tues	8,989.00	9,591.00	-602.00	-6.3%
Total Gate Receipts - Carnival	108,823.00	125,703.00	-16,880.00	-13.4%
Tickets - Advance Sale (8)				
Internet Ticket Sales / Advance	0.00	60.00	-60.00	-100.0%
Tickets - Advance Sale (8) - Other	25,430.00	27,158.00	-1,728.00	-6.4%
Total Tickets - Advance Sale (8)	25,430.00	27,218.00	-1,788.00	-6.6%
Tickets - Single Day(10)	584.00	134.00	450.00	335.8%
Total Gate Receipts	134,837.00	153,055.00	-18,218.00	-11.9%
Junior Exhibitor Pass	3,196.00	3,372.00	-176.00	-5.2%
Membership Fee				
Membership Fee - B4 July (25)				
Membership Fee / Internet (25)	0.00	2,780.00	-2,780.00	-100.0%
Membership Fee - B4 July (25) - Other	15,500.00	11,931.00	3,569.00	29.9%
Total Membership Fee - B4 July (25)	15,500.00	14,711.00	789.00	5.4%
Membersihp Fee -After July (30)				
Membership Fee / Internet (30)	60.00	240.00	-180.00	-75.0%
Membersihp Fee -After July (30) - Other	4,290.00	5,010.00	-720.00	-14.4%
Total Membersihp Fee -After July (30)	4,350.00	5,250.00	-900.00	-17.1%
Total Membership Fee	19,850.00	19,961.00	-111.00	-0.6%
Total Entrance Fees	159,866.00	178,091.00	-18,225.00	-10.2%

Winnebago County Fair Association Profit & Loss

December 2014 through November 2015

	Dec '14 - Nov 15	Dec '13 - Nov 14	\$ Change	% Change
Exhibitors Entry Fees				
Exhibitor's Entry Fees	1,073.75	1,117.75	-44.00	-3.9%
Open Class Entry Fee	203.25	133.50	69.75	52.3%
Total Exhibitors Entry Fees	1,277.00	1,251.25	25.75	2.1%
Fair Operated Concessions				
Beer Oasis				
Beer Oasis - Fri	1,676.19	2,649.00	-972.81	-36.7%
Beer Oasis - Sat	5,582.86	3,149.00	2,433.86	77.3%
Beer Oasis - Sun	405.71	253.00	152.71	60.4%
Beer Oasis - Thurs	1,442.86	1,203.00	239.86	19.9%
Beer Oasis - Tue	780.00	624.00	156.00	25.0%
Beer Oasis - Wed	1,416.19	1,241.00	175.19	14.1%
Total Beer Oasis	11,303.81	9,119.00	2,184.81	24.0%
Entertainment Tent Bar				
Entertainment Tent Bar - Fri	681.90	5,553.00	-4,871.10	-87.7%
Entertainment Tent Bar - Sat	5,228.57	6,851.00	-1,622.43	-23.7%
Entertainment Tent Bar - Sun	432.38	447.00	-14.62	-3.3%
Entertainment Tent Bar - Thurs	3,699.05	3,169.50	529.55	16.7%
Entertainment Tent Bar - Tues	466.67	963.00	-496.33	-51.5%
Entertainment Tent Bar - Wed	1,735.24	1,570.00	165.24	10.5%
Total Entertainment Tent Bar	12,243.81	18,553.50	-6,309.69	-34.0%
Grandstand Bar				
Grandstand Bar - Friday	0.00	5,991.00	-5,991.00	-100.0%
Grandstand Bar - Saturday	8,233.57	6,298.05	1,935.52	30.7%
Grandstand Bar - Thursday	2,879.05	2,905.00	-25.95	-0.9%
Grandstand Bar - Tuesday	1,736.29	1,927.00	-190.71	-9.9%
Grandstand Bar - Wednesday	2,386.67	1,971.00	415.67	21.1%
Total Grandstand Bar	15,235.58	19,092.05	-3,856.47	-20.2%
Ice	139.05	630.00	-490.95	-77.9%
Infield Bar	0.00	635.00	-635.00	-100.0%
Total Fair Operated Concessions	38,922.25	48,029.55	-9,107.30	-19.0%
Fund Raising Income				
Auction	4,970.00	4,780.00	190.00	4.0%
Calendar Raffle Income	0.00	5,740.00	-5,740.00	-100.0%
Fair Raffle Income	0.00	792.00	-792.00	-100.0%
Total Fund Raising Income	4,970.00	11,312.00	-6,342.00	-56.1%
Merchandise, Sold	961.43	0.00	961.43	100.0%
Milk Sales	736.79	309.61	427.18	138.0%
Miscellaneous Income	10,904.32	12,313.24	-1,408.92	-11.4%
Service Fee Income				
Mailing Fee (tickets)	64.00	142.00	-78.00	-54.9%
Total Service Fee Income	64.00	142.00	-78.00	-54.9%
Space & Privileges Rental				
Commercial Space Rental				
Comm Space Rental - Outside	3,725.00	6,825.00	-3,100.00	-45.4%
Comm. Space Rental - Expo	2,476.02	5,859.00	-3,382.98	-57.7%
Total Commercial Space Rental	6,201.02	12,684.00	-6,482.98	-51.1%
Concessions Space Rental				
Con. Space Rental - Expo	2,445.50	0.00	2,445.50	100.0%
Con. Space Rental - Food	11,123.75	10,335.00	788.75	7.6%
Con. Space Rental - Outside	3,500.00	0.00	3,500.00	100.0%
Concessions Space Rental - Other	-83.00	-222.40	139.40	62.7%
Total Concessions Space Rental	16,986.25	10,112.60	6,873.65	68.0%

Winnebago County Fair Association

Profit & Loss

December 2014 through November 2015

	Dec '14 - Nov 15	Dec '13 - Nov 14	\$ Change	% Change
Fair Provided Vendor Insurance	0.00	400.00	-400.00	-100.0%
Utilities Sold	895.47	2,250.00	-1,354.53	-60.2%
Vendor Passes	70.00	460.00	-390.00	-84.8%
Total Space & Privileges Rental	24,152.74	25,906.60	-1,753.86	-6.8%
Sponsorships, Donations, Etc.				
4-H Trophy Sponsor	4,750.00	5,650.00	-900.00	-15.9%
Animal Pen Donations				
Goat Pen Donations	1,300.00	1,000.00	300.00	30.0%
Animal Pen Donations - Other	0.00	200.00	-200.00	-100.0%
Total Animal Pen Donations	1,300.00	1,200.00	100.00	8.3%
Donations - Misc.	1,350.00	1,000.00	350.00	35.0%
Farm Tractor Pull Sponsor	950.00	1,345.00	-395.00	-29.4%
Horse Pull Sponsor	500.00	790.00	-290.00	-36.7%
Pro Tractor Pull Sponsor	150.00	150.00	0.00	0.0%
Rodeo Sponsor	0.00	98.75	-98.75	-100.0%
Small Fry Competition Sponsor	467.75	550.00	-82.25	-15.0%
Sponsor - Donkey Races	350.00	550.00	-200.00	-36.4%
Sponsor - Misc.	1,100.00	6,891.00	-5,791.00	-84.0%
Sponsorships, Donations, Etc. - Other	150.00	0.00	150.00	100.0%
Total Sponsorships, Donations, Etc.	11,067.75	18,224.75	-7,157.00	-39.3%
Total Income	319,289.25	354,098.09	-34,808.84	-9.8%
Sale				
Sale Commissions	1,000.00	0.00	1,000.00	100.0%
Total Sale	1,000.00	0.00	1,000.00	100.0%
Total Income	332,148.77	366,573.09	-34,424.32	-9.4%
Cost of Goods Sold				
Fair Operated Concessions				
Beer Expense	9,408.40	5,970.15	3,438.25	57.6%
Ice Expense	800.00	900.00	-100.00	-11.1%
Miscellaneous Expenses	617.80	1,050.00	-432.20	-41.2%
Soft Drink Expense	2,136.14	2,721.84	-585.70	-21.5%
Wine Cooler Expense	1,784.60	1,422.00	362.60	25.5%
Total Fair Operated Concessions	14,746.94	12,063.99	2,682.95	22.2%
Merchandise, Bought for Resale	397.75	1,047.25	-649.50	-62.0%
Total COGS	15,144.69	13,111.24	2,033.45	15.5%
Gross Profit	317,004.08	353,461.85	-36,457.77	-10.3%
Expense				
Expenses				
Administrative Expense				
Accounting Expense	1,885.00	1,370.00	515.00	37.6%
Annual Meeting Expense	175.00	670.00	-495.00	-73.9%
Bank Charges	43.00	118.94	-75.94	-63.9%
Charge Card Fees	400.42	1,500.13	-1,099.71	-73.3%
Depreciation Expense	44.02	1,843.00	-1,798.98	-97.6%
Interest Expense	67.07	0.00	67.07	100.0%
Licenses	55.00	10.00	45.00	450.0%
Memorials, Gifts, Donations	1,000.00	0.00	1,000.00	100.0%
Miscellaneous Admin. Exp.	0.00	229.10	-229.10	-100.0%
Office Equipment	179.99	620.25	-440.26	-71.0%
Office Rental	1,800.00	1,950.00	-150.00	-7.7%
Office Supplies	576.54	1,067.35	-490.81	-46.0%
Postage	318.00	906.67	-588.67	-64.9%
Software upgrade	0.00	366.45	-366.45	-100.0%
Telephone	3,358.69	3,290.02	68.67	2.1%
Website Expense	3,505.58	617.38	2,888.20	467.8%
Total Administrative Expense	13,408.31	14,559.29	-1,150.98	-7.9%

Winnebago County Fair Association

Profit & Loss

December 2014 through November 2015

	Dec '14 - Nov 15	Dec '13 - Nov 14	\$ Change	% Change
Advertising Expense				
Misc. Advertising Expense	0.00	896.27	-896.27	-100.0%
Newspaper Advertising	8,583.00	8,459.00	124.00	1.5%
Printed Advertising Materials				
Pens/Pencils	1,988.97	1,307.53	681.44	52.1%
Yard Signs	0.00	2,400.00	-2,400.00	-100.0%
Printed Advertising Materials - Other	0.00	30.00	-30.00	-100.0%
Total Printed Advertising Materials	1,988.97	3,737.53	-1,748.56	-46.8%
Radio Advertising	7,155.41	12,648.00	-5,492.59	-43.4%
Television Advertising	0.00	4,347.00	-4,347.00	-100.0%
Total Advertising Expense	17,727.38	30,087.80	-12,360.42	-41.1%
Association Dues and Membership Awards	742.30	742.30	0.00	0.0%
Jr. Fair Expenses	2,780.60	2,959.60	-179.00	-6.1%
Jr. Fair Milk Checks	739.05	324.24	414.81	127.9%
Misc. Awards Expense	856.00	0.00	856.00	100.0%
Small Fry Award Expenses	0.00	447.50	-447.50	-100.0%
Trophies				
Jr. Fair Trophies	7,736.75	5,342.90	2,393.85	44.8%
Trophies - Other	0.00	20.80	-20.80	-100.0%
Total Trophies	7,736.75	5,363.70	2,373.05	44.2%
Total Awards	12,112.40	9,095.04	3,017.36	33.2%
Fairest of the Fair Contest	320.00	15.00	305.00	2,033.3%
Fund Raising Expenses				
Calendar Raffle Payout Expense	0.00	6,305.00	-6,305.00	-100.0%
Raffle Expense	4,235.61	379.40	3,856.21	1,016.4%
Fund Raising Expenses - Other	0.00	1,057.00	-1,057.00	-100.0%
Total Fund Raising Expenses	4,235.61	7,741.40	-3,505.79	-45.3%
Insurance				
Liability Insurance	11,929.70	19,681.80	-7,752.10	-39.4%
Workmen's Compensation	1,016.00	0.00	1,016.00	100.0%
Total Insurance	12,945.70	19,681.80	-6,736.10	-34.2%
Judges	4,875.00	4,350.00	525.00	12.1%
Maintenance				
Building & Grounds Maint. Exp.	649.58	612.66	36.92	6.0%
Sanitation Expenses	5,123.80	5,129.33	-5.53	-0.1%
Winnebago County Expense	508.50	0.00	508.50	100.0%
Total Maintenance	6,281.88	5,741.99	539.89	9.4%
Plant & Equipment-Permanent	0.00	-107.80	107.80	100.0%
Premiums				
Jr. Fair Premiums	8,380.75	8,067.25	313.50	3.9%
Open Class Premiums	1,355.75	1,142.25	213.50	18.7%
Total Premiums	9,736.50	9,209.50	527.00	5.7%
Printing Expenses	3,279.60	2,088.30	1,191.30	57.1%
Rental of Equipment	29,960.48	18,438.18	11,522.30	62.5%
Salaries & Cost for Services				
Emergency Services Expense				
Ambulance & Fire Expense	1,274.94	1,248.90	26.04	2.1%
First Aid Expense	1,625.00	1,300.00	325.00	25.0%
Police Protection	4,635.67	5,070.27	-434.60	-8.6%
Total Emergency Services Expense	7,535.61	7,619.17	-83.56	-1.1%
Food for Crews	823.00	2,429.92	-1,606.92	-66.1%

Winnebago County Fair Association

Profit & Loss

December 2014 through November 2015

	Dec '14 - Nov 15	Dec '13 - Nov 14	\$ Change	% Change
Service Groups				
Entertainment Tent Bartending	1,190.75	1,951.75	-761.00	-39.0%
Grandstand Bartending	1,599.78	1,716.50	-116.72	-6.8%
Oasis Bartending	1,186.80	911.90	274.90	30.2%
Parking Attendants	2,280.00	2,000.00	280.00	14.0%
Total Service Groups	6,257.33	6,580.15	-322.82	-4.9%
Wages - Part Time Help				
Electrician	1,373.87	1,627.79	-253.92	-15.6%
Total Wages - Part Time Help	1,373.87	1,627.79	-253.92	-15.6%
Total Salaries & Cost for Services	15,989.81	18,257.03	-2,267.22	-12.4%
Special Acts Features & Contest				
Entertainment Tent				
Friday Entertain Tent Exp	1,000.00	7,500.00	-6,500.00	-86.7%
Misc. Entertain Tent Exp	5,450.00	2,700.00	2,750.00	101.9%
Saturday Entertain Tent Exp	6,405.00	4,725.00	1,680.00	35.6%
Sunday Entertain Tent Exp	1,000.00	1,500.00	-500.00	-33.3%
Thursday Entertain Tent Exp	700.00	800.00	-100.00	-12.5%
Tuesday Entertainment Tent Exp	0.00	550.00	-550.00	-100.0%
Wednesday Entertain Tent Exp	500.00	550.00	-50.00	-9.1%
Total Entertainment Tent	15,055.00	18,325.00	-3,270.00	-17.8%
Expo Center Entertainment	2,725.00	4,250.00	-1,525.00	-35.9%
Grandstand Entertainment				
Friday Grandstad Entertain. Exp	4,217.50	21,825.50	-17,608.00	-80.7%
Misc. Grandstand Entert Exp	0.00	1,460.00	-1,460.00	-100.0%
Saturday Grandstand Entert Exp	7,797.50	1,152.50	6,645.00	576.6%
Thursday Grandstand Entert Exp	10,582.50	4,505.25	6,077.25	134.9%
Tuesday Grandstand Entertain Ex	12,755.00	12,240.00	515.00	4.2%
Wednesday Grandstand Entert Exp	16,847.50	16,138.75	708.75	4.4%
Grandstand Entertainment - Other	0.00	227.50	-227.50	-100.0%
Total Grandstand Entertainment	52,200.00	57,549.50	-5,349.50	-9.3%
Horse Pull	800.00	250.00	550.00	220.0%
Oasis Tent Entertain Exp	550.00	700.00	-150.00	-21.4%
Prize Money	0.00	4,520.00	-4,520.00	-100.0%
Special Exhibitions				
Dock Dogs	13,500.00	14,250.00	-750.00	-5.3%
Trout Pond	3,800.00	3,800.00	0.00	0.0%
Special Exhibitions - Other	15,590.00	15,500.00	90.00	0.6%
Total Special Exhibitions	32,890.00	33,550.00	-660.00	-2.0%
Walk Around Entertainment	14,925.13	11,200.00	3,725.13	33.3%
Special Acts Features & Contest - Other	0.00	4,260.75	-4,260.75	-100.0%
Total Special Acts Features & Contest	119,145.13	134,605.25	-15,460.12	-11.5%
State Taxes				
State Sales Tax	0.00	2,387.48	-2,387.48	-100.0%
Total State Taxes	0.00	2,387.48	-2,387.48	-100.0%
Superintendents & Assistants	1,330.00	1,330.00	0.00	0.0%
Utilities				
Diesel Fuel/Generators	2,222.43	6,619.25	-4,396.82	-66.4%
Electric & Gas Expense	5,295.04	5,293.34	1.70	0.0%
Sewer & Water	947.79	1,080.36	-132.57	-12.3%
Total Utilities	8,465.26	12,992.95	-4,527.69	-34.9%
Total Expenses	260,555.36	291,215.51	-30,660.15	-10.5%

Winnebago County Fair Association Profit & Loss

December 2014 through November 2015

	Dec '14 - Nov 15	Dec '13 - Nov 14	\$ Change	% Change
Payroll Expenses	17,016.40	16,891.92	124.48	0.7%
Returned Checks	66.00	387.00	-321.00	-83.0%
Sponsorship Expenses	0.00	1,027.78	-1,027.78	-100.0%
Total Expense	277,637.76	309,522.21	-31,884.45	-10.3%
Net Ordinary Income	39,366.32	43,939.64	-4,573.32	-10.4%
Other Income/Expense				
Other Expense				
Bad Debt	0.00	960.00	-960.00	-100.0%
Penalties	243.57	0.00	243.57	100.0%
Total Other Expense	243.57	960.00	-716.43	-74.6%
Net Other Income	-243.57	-960.00	716.43	74.6%
Net Income	39,122.75	42,979.64	-3,856.89	-9.0%



Department of Agricultural and Applied Economics
 515 Taylor Hall – 247 Lorch St.
 Madison, WI 53706
 (608) 263-6251
 (fax) (608) 262-4376
 scdeller@wisc.edu

November 11, 2015

To: Joe Aulik

Cc: Catherine Neiswender

From: Steven Deller

Re: VA Expenditure Impacts on Winnebago County 2014

As you requested, below are the updated economic impacts of the VA related expenditures in Winnebago County. The economic metrics (e.g., jobs, labor income, etc.) and nature of the multipliers (direct, indirect, induced and total) are the same as previous year analysis. If you need any clarification on interpretation please feel free to drop me a note.

Veteran's Impacts 2014 Winnebago County

Impact Type	Employment	Labor Income (000\$)	Total Income (000\$)	Industry Sales (000\$)
Direct Effect	221	\$ 12,590.2	\$ 14,540.7	\$ 27,614.4
Indirect Effect	53	\$ 2,326.3	\$ 3,940.1	\$ 6,984.7
Induced Effect	269	\$ 10,487.1	\$ 18,997.5	\$ 32,102.0
Total Effect	543	\$ 25,403.6	\$ 37,478.3	\$ 66,701.1
Agriculture	0	\$ 2.5	\$ 4.5	\$ 8.2
Mining	0	\$ 3.0	\$ 7.5	\$ 14.0
Construction	3	\$ 235.5	\$ 242.5	\$ 618.5
Manufacturing	2	\$ 109.4	\$ 167.2	\$ 502.0
TIPU	10	\$ 558.1	\$ 974.4	\$ 2,039.0
Trade	58	\$ 1,783.6	\$ 2,943.2	\$ 5,055.5
Service	467	\$ 22,541.8	\$ 32,929.5	\$ 58,018.8
Government	2	\$ 169.7	\$ 209.7	\$ 445.2
State and Local Govt Revenues				
Income Taxes	\$ 537.3			
Sales Taxes	\$ 857.6			
Property Taxes	\$ 1,115.4			
Other	\$ 377.4			
Total S&L Govt Rev	\$ 2,887.6			

FY14 Summary of Expenditures by State												
Expenditures in \$000s												
County/ Congressional District	Veteran Population*	Total Expenditure	Compensation & Pension	Construction	Education & Vocational Rehabilitation/ Employment	Loan Guaranty#	General Operating Expenses	Insurance & Indemnities	Medical Care	Unique Patients**		
ADAMS	2,191	\$ 15,646	\$ 6,085	\$ -	\$ 109	\$ -	\$ -	\$ 134	\$ 9,319	985		
ASHLAND	1,312	\$ 8,281	\$ 4,714	\$ -	\$ 370	\$ -	\$ -	\$ 103	\$ 3,094	436		
BARRON	3,748	\$ 23,499	\$ 11,766	\$ -	\$ 917	\$ -	\$ -	\$ 474	\$ 10,341	1,326		
BAYFIELD	1,718	\$ 8,772	\$ 4,429	\$ -	\$ 174	\$ -	\$ -	\$ 159	\$ 4,011	530		
BROWN	17,199	\$ 96,274	\$ 47,759	\$ -	\$ 6,436	\$ -	\$ -	\$ 1,342	\$ 40,738	5,525		
BUFFALO	1,112	\$ 6,834	\$ 3,933	\$ -	\$ 183	\$ -	\$ -	\$ 142	\$ 2,577	395		
BURNETT	1,729	\$ 11,914	\$ 5,910	\$ -	\$ 185	\$ -	\$ -	\$ 40	\$ 5,780	631		
CALUMET	3,069	\$ 11,600	\$ 4,950	\$ -	\$ 246	\$ -	\$ -	\$ 167	\$ 6,237	1,070		
CHIPPEWA	5,458	\$ 32,806	\$ 15,301	\$ -	\$ 1,261	\$ -	\$ -	\$ 493	\$ 15,751	1,740		
CLARK	2,085	\$ 15,924	\$ 9,339	\$ -	\$ 353	\$ -	\$ -	\$ 79	\$ 6,153	902		
COLUMBIA	4,975	\$ 28,003	\$ 12,254	\$ -	\$ 1,344	\$ -	\$ -	\$ 138	\$ 14,266	1,376		
CRAWFORD	1,346	\$ 8,526	\$ 4,294	\$ -	\$ 155	\$ -	\$ -	\$ 29	\$ 4,047	440		
DANE	28,697	\$ 171,392	\$ 62,452	\$ 1,431	\$ 13,156	\$ -	\$ 2,074	\$ 4,253	\$ 88,026	7,012		
DODGE	7,084	\$ 29,558	\$ 13,210	\$ -	\$ 1,577	\$ -	\$ -	\$ 391	\$ 14,380	1,720		
DOOR	2,562	\$ 13,089	\$ 5,955	\$ -	\$ 394	\$ -	\$ -	\$ 138	\$ 6,601	839		
DOUGLAS	4,311	\$ 29,782	\$ 16,872	\$ -	\$ 1,946	\$ -	\$ -	\$ 214	\$ 10,751	1,384		
DUNN	3,313	\$ 17,294	\$ 9,624	\$ -	\$ 1,533	\$ -	\$ -	\$ 168	\$ 5,968	764		
EAU CLAIRE	7,643	\$ 34,776	\$ 17,142	\$ -	\$ 3,370	\$ -	\$ -	\$ 603	\$ 13,660	1,823		
FLORENCE	521	\$ 8,671	\$ 2,656	\$ -	\$ 64	\$ -	\$ -	\$ 67	\$ 5,885	296		
FOND DU LAC	8,096	\$ 32,607	\$ 16,286	\$ -	\$ 2,185	\$ -	\$ -	\$ 312	\$ 13,824	1,981		
FOREST	926	\$ 9,764	\$ 5,267	\$ -	\$ 77	\$ -	\$ -	\$ 32	\$ 4,387	476		
GRANT	3,332	\$ 18,665	\$ 8,125	\$ -	\$ 925	\$ -	\$ -	\$ 306	\$ 9,309	1,000		
GREEN	2,735	\$ 15,549	\$ 6,555	\$ -	\$ 401	\$ -	\$ -	\$ 274	\$ 8,320	715		
GREEN LAKE	1,480	\$ 9,219	\$ 4,572	\$ -	\$ 303	\$ -	\$ -	\$ 72	\$ 4,273	450		
IOWA	1,421	\$ 9,093	\$ 3,771	\$ -	\$ 224	\$ -	\$ -	\$ 50	\$ 5,048	456		
IRON	780	\$ 5,474	\$ 2,298	\$ -	\$ 101	\$ -	\$ -	\$ 29	\$ 3,046	314		
JACKSON	1,911	\$ 14,162	\$ 7,169	\$ -	\$ 336	\$ -	\$ -	\$ 77	\$ 6,580	744		
JEFFERSON	6,272	\$ 32,641	\$ 13,483	\$ -	\$ 1,908	\$ -	\$ -	\$ 390	\$ 16,860	1,661		
JUNEAU	2,279	\$ 20,500	\$ 8,581	\$ -	\$ 741	\$ -	\$ -	\$ 114	\$ 11,065	1,045		

KENOSHA	12,247	\$	84,121	\$	34,050	\$	-	\$	7,610	\$	-	\$	-	\$	936	\$	41,524	3,303
KEWAUNEE	1,417	\$	9,938	\$	5,714	\$	-	\$	267	\$	-	\$	-	\$	69	\$	3,889	574
LA CROSSE	9,191	\$	56,040	\$	29,178	\$	-	\$	5,331	\$	-	\$	-	\$	575	\$	20,956	3,364
LAFAYETTE	983	\$	5,963	\$	2,637	\$	-	\$	172	\$	-	\$	-	\$	48	\$	3,106	312
LANGLADE	1,906	\$	13,985	\$	7,917	\$	-	\$	331	\$	-	\$	-	\$	157	\$	5,580	747
LINCOLN	2,626	\$	18,786	\$	11,584	\$	-	\$	564	\$	-	\$	-	\$	204	\$	6,435	1,069
MANITOWOC	6,954	\$	33,803	\$	17,791	\$	-	\$	1,774	\$	-	\$	-	\$	562	\$	13,676	2,124
MARATHON	10,612	\$	44,189	\$	24,009	\$	-	\$	2,486	\$	-	\$	-	\$	533	\$	17,161	3,114
MARINETTE	4,172	\$	41,479	\$	18,585	\$	-	\$	1,026	\$	-	\$	-	\$	410	\$	21,458	1,914
MARQUETTE	1,746	\$	11,354	\$	5,555	\$	-	\$	160	\$	-	\$	-	\$	39	\$	5,599	580
MENOMINEE	349	\$	1,871	\$	1,256	\$	-	\$	87	\$	-	\$	-	\$	1	\$	526	80
MILWAUKEE	51,037	\$	534,455	\$	157,171	\$	3,905	\$	26,410	\$	-	\$	67,230	\$	4,541	\$	275,200	15,402
MONROE	5,178	\$	122,448	\$	28,835	\$	6,648	\$	3,376	\$	-	\$	1,512	\$	242	\$	81,835	2,745
OCONTO	3,366	\$	23,235	\$	11,990	\$	-	\$	584	\$	-	\$	-	\$	157	\$	10,505	1,336
ONEIDA	3,659	\$	23,633	\$	12,721	\$	-	\$	727	\$	-	\$	-	\$	257	\$	9,929	1,471
OUTAGAMIE	12,986	\$	63,740	\$	33,522	\$	-	\$	4,666	\$	-	\$	-	\$	956	\$	24,596	3,735
OZAUKEE	6,147	\$	26,763	\$	12,111	\$	-	\$	2,094	\$	-	\$	-	\$	1,068	\$	11,490	1,064
PEPIN	497	\$	3,846	\$	2,123	\$	-	\$	105	\$	-	\$	-	\$	20	\$	1,598	201
PIERCE	2,905	\$	17,759	\$	8,891	\$	-	\$	1,344	\$	-	\$	-	\$	127	\$	7,398	655
POLK	3,750	\$	23,693	\$	11,208	\$	-	\$	839	\$	-	\$	-	\$	319	\$	11,327	1,201
PORTAGE	4,767	\$	27,399	\$	14,454	\$	-	\$	1,687	\$	-	\$	-	\$	409	\$	10,849	1,752
PRICE	1,523	\$	8,475	\$	4,212	\$	-	\$	196	\$	-	\$	-	\$	191	\$	3,875	498
RACINE	14,254	\$	87,431	\$	38,412	\$	-	\$	5,679	\$	-	\$	-	\$	950	\$	42,389	3,374
RICHLAND	1,354	\$	8,892	\$	3,561	\$	-	\$	148	\$	-	\$	-	\$	376	\$	4,807	490
ROCK	12,806	\$	61,456	\$	27,922	\$	-	\$	3,647	\$	-	\$	-	\$	568	\$	29,320	3,354
RUSK	1,495	\$	8,939	\$	4,811	\$	-	\$	151	\$	-	\$	-	\$	127	\$	3,849	452
ST. CROIX	6,153	\$	31,695	\$	14,840	\$	-	\$	2,255	\$	-	\$	-	\$	330	\$	14,269	1,412
SAUK	4,551	\$	28,312	\$	12,463	\$	-	\$	968	\$	-	\$	-	\$	380	\$	14,501	1,488
SAWYER	1,879	\$	12,711	\$	6,752	\$	-	\$	397	\$	-	\$	-	\$	140	\$	5,422	627
SHAWANO	3,287	\$	20,482	\$	10,214	\$	-	\$	808	\$	-	\$	-	\$	138	\$	9,322	1,247
SHEBOYGAN	8,943	\$	30,698	\$	14,439	\$	-	\$	2,093	\$	-	\$	-	\$	519	\$	13,646	1,937
TAYLOR	1,514	\$	7,047	\$	4,538	\$	-	\$	244	\$	-	\$	-	\$	108	\$	2,157	416
TREMPEALEAU	2,114	\$	14,142	\$	7,651	\$	-	\$	662	\$	-	\$	-	\$	212	\$	5,616	782
VERNON	2,196	\$	15,001	\$	7,693	\$	-	\$	488	\$	-	\$	-	\$	184	\$	6,636	839

VILAS	2,511	\$	15,818	\$	7,786	\$	-	\$	294	\$	-	\$	-	\$	199	\$	7,539	948
WALWORTH	7,328	\$	39,883	\$	18,184	\$	-	\$	2,523	\$	-	\$	-	\$	632	\$	18,543	1,744
WASHBURN	1,544	\$	15,792	\$	8,103	\$	-	\$	290	\$	-	\$	-	\$	111	\$	7,289	617
WASHINGTON	9,264	\$	41,071	\$	19,962	\$	-	\$	3,061	\$	-	\$	-	\$	880	\$	17,167	1,959
WAUKESHA	27,035	\$	130,941	\$	57,247	\$	-	\$	9,835	\$	-	\$	-	\$	3,246	\$	60,613	4,867
WAUPACA	5,033	\$	47,275	\$	28,710	\$	-	\$	990	\$	-	\$	-	\$	277	\$	17,297	1,660
WAUSHARA	2,535	\$	15,440	\$	7,756	\$	-	\$	338	\$	-	\$	-	\$	141	\$	7,205	864
WINNEBAGO	14,193	\$	58,729	\$	31,114	\$	-	\$	4,225	\$	-	\$	-	\$	871	\$	22,518	3,659
WOOD	6,411	\$	36,064	\$	19,663	\$	-	\$	1,635	\$	-	\$	-	\$	246	\$	14,520	2,502

WISCONSIN (Totals)	413,723	\$ 2,665,107	\$ 1,142,091	\$ 11,984	\$ 143,544	\$ -	\$ 70,816	\$ 33,242	\$ 1,263,430	120,515
---------------------------	----------------	---------------------	---------------------	------------------	-------------------	-------------	------------------	------------------	---------------------	----------------

CONG. DIST (01)	52,015	\$	294,547	\$	124,537	\$	-	\$	21,075	\$	-	\$	-	\$	3,813	\$	145,123	12,527
CONG. DIST (02)	44,686	\$	261,685	\$	102,761	\$	2	\$	16,806	\$	-	\$	2,074	\$	5,234	\$	134,808	11,783
CONG. DIST (03)	57,015	\$	436,179	\$	186,613	\$	6,620	\$	22,092	\$	-	\$	1,512	\$	4,157	\$	215,186	19,950
CONG. DIST (04)	34,474	\$	418,746	\$	117,325	\$	3,889	\$	19,715	\$	-	\$	67,230	\$	3,021	\$	207,565	11,098
CONG. DIST (05)	50,451	\$	279,552	\$	115,744	\$	52	\$	18,671	\$	-	\$	-	\$	5,218	\$	139,867	10,991
CONG. DIST (06)	58,501	\$	261,278	\$	127,401	\$	1,393	\$	15,138	\$	-	\$	-	\$	3,973	\$	113,373	14,871
CONG. DIST (07)	62,195	\$	379,845	\$	196,765	\$	28	\$	14,233	\$	-	\$	-	\$	4,127	\$	164,692	21,069
CONG. DIST (08)	54,386	\$	333,269	\$	170,938	\$	-	\$	15,814	\$	-	\$	-	\$	3,700	\$	142,816	18,226

WISCONSIN (Totals)	413,723	\$ 2,665,100	\$ 1,142,084	\$ 11,984	\$ 143,543	\$ -	\$ 70,816	\$ 33,242	\$ 1,263,430	120,515
---------------------------	----------------	---------------------	---------------------	------------------	-------------------	-------------	------------------	------------------	---------------------	----------------

Notes:

* Veteran population estimates, as of September 30, 2014, are produced by the VA Office of the Actuary (VetPop 2014).

attributed to Travis County, TX, where all Loan Guaranty payments are processed. VA will continue to improve data collection for future GDX reports to better distribute loan expenditures at the state,

** Unique patients are patients who received treatment at a VA health care facility. Data are provided by the Allocation Resource Center (ARC).

Insurance Center for the Insurance costs; the VA Financial Management System (FMS) for Construction, Medical Research, General Operating Expenses, and certain C&P and Readjustment data; and

1. Expenditures are rounded to the nearest thousand dollars. For example, \$500 to \$1,000 are rounded to \$1; \$0 to \$499 are rounded to \$0; and "\$-" = 0 or no expenditures.

connected deaths; veterans' pension for nonservice-connected disabilities; and burial and other benefits to veterans and their survivors.

expenditures do not include dollars for construction or other non-medical support.

4. Medical Care expenditures are based on where patients live instead of where care is delivered.

5. A star symbol (*) in the Unique Patients column denotes that there were less than 10 Unique Patients.

WINNEBAGO COUNTY LWCD PROJECT LIST				
	Township	PROJECT (BMP)	FUNDING SOURCE IF COST SHARED	STATUS
	Rushford	BY	LWRM	2016
	Rushford	French Drain	LWRM	INSTALLED 2015
	Vinland	MS/Transfer	N/A	2014/2015
	Clayton	WA	County	INSTALLED 2015
	Winchester	WR	County	INSTALLED
	Clayton	Water-er	EQUIP	2015
	Winneconne	Cattle Crossings	LWRM	2015
	Algoma	WA	County	INSTALLED 2015
	Wolf River	WR	County	2015?
	Winchester	WR	County/LWRM	2016
	Winneconne	MS/Transfer	N/A	INSTALLED 2015
	Winneconne	WR	CREP/LWRM	INSTALLED 2015
	Omro	Feed/Div/Sand Lanes/MS	NOI/LWRM	INSTALLED 2014-15
	Utica	Milkhouse Waste	?	2015
	Nekimi	BY	LWRM	2016
	Nekimi	WW	LWRM	INSTALLED 2015
	Vinland	WR	County	INSTALLED 2014-15
	Algoma	WA	County	INSTALLED 2015
	Rushford	WW/WR	EQUIP	INSTALLED 2015
	Nekimi	WW	LWRM	2016
	Utica	MS	?	2016
	Winchester	WR	County	INSTALLED 2015
	Nekimi	WW	?	?
	Rushford	WW	?	2016
	Oshkosh	WR	County/USFWS	2015-2016
	Wolf River	MS/Transfer	EQUIP	INSTALLED
	Nepeuskun	BY	?	?
	Clayton	WW	LWRM	2015
	Algoma	WA	County	INSTALLED 2015
	Algoma	WA	County	INSTALLED 2015
	Wolf River	WR	County/USFWS	2015
	Oshkosh	Water-er	EQUIP	2015
	Utica	WR	County	INSTALLED 2015
	Wolf River	SP	County/DNR	2015
	Oshkosh	WA	County	2016
	Vinland	WW	LWRM	2015
	Poygan	SP	County	2015
	Algoma	WA	County	INSTALLED
	Algoma	WA	County	INSTALLED 2015
	Clayton	WW	LWRM	2016
	Clayton	MS	EQUIP?	2016
	Vinland	WR	County	INSTALLED 2015
	Black Wolf	SP?/SHRUB	?	?
	Omro	WA	County	INSTALLED 2015
	Omro	MS	N/A	2015
	Wolf River	MS/Transfer	?	?
	Vinland	MS	N/A	?
	Winneconne	MS/Transfer	EQUIP	INSTALLED
	Clayton	Rock Lined WW	EQUIP	2016
	Nekimi	WW	LWRM	2016
	Winchester	BY	LWRM	INSTALLED 2015
	Winneconne	SP	?	?
	Vinland	WW	LWRM	2016
	Omro	WW	?	?
	Winchester	Buffer?	?	?
	Clayton	BY/Roof Runoff System	LWRM	2015/2016
	Oshkosh	SP, SHRUB	?	2016
	Wolf River	SP, SHRUB	County	2016
	Nepeuskun	Fencing	?	2016
	Nepeuskun	Feed/Milkhouse Waste	N/A	2016
	Omro	MS/Transfer	?	?
	Nekimi	MS	N/A	2016
	Utica	Diversion	LWRM	INSTALLED 2015
	Wolf River	MS/Transfer	N/A	INSTALLED 2015
	Wolf River	MS/Transfer	N/A	2016-2017
	Clayton	WW	LWRM	INSTALLED 2015
	Utica	WW	LWRM	INSTALLED 2015
	Nekimi	WW, Mach. Crossing	LWRM	INSTALLED 2015

MS - Manure Storage, BY - Barnyard Runoff, WW- Waterway System, SP - Shoreline/Streambank Protection, WR - Wetland Restoration,
 SHRUB - Shoreline Restoration, FEED - Feed Storage Runoff, TRANSFER - Manure Transfer System, WA - Well Abandonment 1-12-2016

Shaded area indicates the BMPs/Projects added to the list since the previous printing



2015

YEAR END REPORT

Monday January 4, 2016

2015 EVENTS

Sunnyview Expo Center stands out as a venue of choice for trade shows as well as weddings, birthday parties and reunions within the Exposition Building. Not to mention the tremendous demand for dates at the Covered Arena for horse shows throughout the warm weather months.

In May Sunnyview Expo Center accepted a Partner in Tourism Award from the Oshkosh CVB at the annual Tourism Breakfast held at the Best Western Waterfront Premier Hotel in Oshkosh. Thank you OCVB for the recognition! We look forward to working closely with you in the future.

Over the course of the year 209 event days took place. There were 8 new events, several enhanced events and numerous training sessions. Among the new events; a Cyclocross Bicycle Race, a Labor Management Council job fair for area high schoolers, the WI State Appaloosa Club horse show, an Ultimate Frisbee Meet, and the Brandon Thielke Foundation fund raiser. Annual events continued with steady growth seen in attendance across genres.



Several grounds improvement projects were completed in 2015, including reconstruction of the outdoor arena base, drain tile placement around

barns A through C, additional electrical outlets and refurbishment of several walkway bridges. A big thank you to Matt Westphal of Westy's Collectables for rescuing the famous Winnebago County Fairgrounds arch, made in 1927 for the old fairgrounds, which was put up for auction recently. He allowed us to acquire it from him to erect at the current site with enormous help from Julie Johnson of the Winnebago County Historical Society who supplied a copy of the original blue prints! We hope to have the arch itself up in time for the 2016 Winnebago County Fair with brickwork and landscaping to follow with the help of fundraising by the Winnebago County Fair Assoc. and 4H. A great number of people are very excited about the arch coming home.





Winnebago County Community Park's preliminary trail counts of 691 persons traversing the central portion of the shared use path during official counts conducted electronically by the East Central WI Regional Planning Commission provide evidence of the path's popularity especially since the time period of the counts included several rainy days.

Amenities added in 2015 include, bean bag toss games, volleyball nets, an outdoor ping pong table and the initial piping for a bottle filler station. The Oshkosh Cycling Club provided a kiosk with a bike tire pump at the head end of the path. The archery range saw ADA upgrades and a new look for the firing line. Several batches of fish were stocked in the ponds for catch and release angling. The Oshkosh Seniors Center helped out by providing the labor skills to replace some of our aging birdhouses within the natural areas of the park. Thanks!

The biggest news for 2015 is the award of a Greenfields Outdoor Fitness Grant which will help to provide 7 stations of accessible outdoor fitness equipment to be located to the north of Shelter #2



in what will become The Natural Way to Live, Learn & Play area of the park. A grant supplying milkweed plugs to provide a Monarch Watch station within this same area was also awarded

with installation commencing in May of 2016 via partnership with the Valley Christian Academy.



RECREATION TRAILS

The *Tribal Heritage Crossing of the WIOUWASH State Recreation Trail* received



recognition as a National Recreational Trail from the United States Department of the Interior.

The Official Trail Ambassador Program also gained another partner in the Butte Des Morts Conservation Club. A kiosk was purchased to install along the Mascoutin Trail where it connects to the Vines & Rushes property for future news and updates.



NATURE PRESERVES

The J.P. Coughlin Nature Area entrance has been demolished in preparation for a new arbor, signage and plantings. There's still time to get involved with this project for sponsorships of structures and garden beds.





Total Tourism Impacts

	Direct Visitor Spending			Total Business Sales			Employment		
	Millions		%	Millions		%	Total		%
County	2013	2014	Change	2013	2014	Change	2013	2014	Change
Wisconsin	\$10,840.1	\$11,419.1	5.34%	\$17,517.8	\$18,475.6	5.47%	185,495	187,643	1.16%
Winnebago County	\$218.9	\$230.3	5.21%	\$412.1	\$434.5	5.43%	4,778	4,850	1.51%

FACTS ON TOURISM IN WI

- Were the Wisconsin tourism industry a single business, it would rank #242 on the Forbes 500 list, similar in size to Visa, Inc. and CarMax and larger than Norfolk Southern or Office Depot.
- Visitor spending of \$11.4 billion is equal to the total revenue of the Wisconsin Lottery... since 1988.
- Total sales in supported by tourism in Wisconsin reached \$18.5 billion in 2014.
- By comparison, worldwide revenue of Wisconsin's 4th largest company – Kohl's – was \$19 billion in 2014
- Each household in Wisconsin benefits from tourism, saving \$620 in 2014 in taxes as visitor activity supports state and local governmental revenue.

'The Economic Impact of Tourism in WI', April 2015

THANK YOU!

Your sponsorship helps the Parks Department to promote a healthy lifestyle for the citizens of Winnebago County as well as provide facilities for special events which facilitate tourism and shows how much our sponsors care about our local community!

OF NOTE FOR 2016

The Great Lakes Logging Congress is holding their 2016 conference and trade show at Sunnyview Expo Center in September. Also new to the expo in 2016, The N.E.W. Sport Fishin' Show in February, and The Northern Flyways Golden Club dog show in April. The WI Outdoor Sportsman Fest has moved to August 2016 and the Winnebago Pet Expo is set to return in October.

SPONSOR OPPORTUNITIES

We encourage use our monthly newsletter for cross promotion of our web sites and Facebook pages with our sponsors. All sponsors are encouraged to fully activate their sponsorship on site, at fund raisers for park projects, via signage, T-shirts or other novelties and memorabilia. Please contact me with your ideas at vredlin@co.winnebago.wi.us.



**WINNEBAGO COUNTY PARKS DEPARTMENT
& SUNNYVIEW EXPO CENTER
MONTHLY NEWSLETTER****Disc Golf, how to enjoy playing in the winter**

Updated on March 14, 2015 <http://hubpages.com/sports> By S. Pease

Playing disc golf in the winter

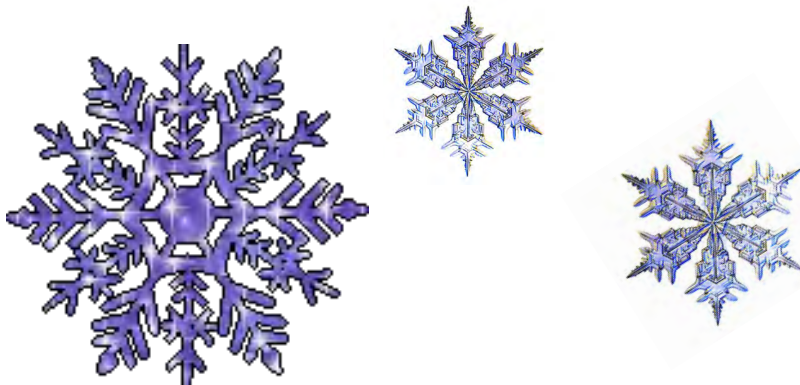
When I say winter disc golf, I'm talking about winter in the northern half of the U.S., and other parts of the world where we have snow and cold. For many of you, winter is the nice time to play, when the nasty heat and humidity does not make it hard to just breath. If I could pick the best temperature for disc golf, I would have to say that 50 to 70 degrees, no humidity, no wind, no bugs, and high sun, would be perfect. Back to winter now.

Clothing for disc golf

The most important thing in winter is to be able to keep warm, but not be so restricted in movement, that you can't throw properly. I recommend wearing a poly long underwear shirt, with a hooded sweatshirt over that, and a fleece pullover nylon shell to stop the wind. I also wear a neck warmer when it's real cold, that I can pull up over my face. Wear a wool stocking cap. For my hands, there are a couple of things I do. You can wear a wool mitten on your non throwing hand, or use a tube hand warmer like football players use, with or without a chemical hand warmer in it.

Or you can wear mittens on both hands, and take off the one on your throwing hand when throwing. I do not like to wear any gloves when throwing. I do carry a pair of neoprene waterproof gloves in my bag, for reaching into cold water.

For your feet. Make sure you have waterproof and warm boots. Don't wear too thick of socks. Your feet will stay fairly warm because you are walking most of the time.



Continued from page 1

Other important tips

When there is snow on the ground that is more than 3 inches deep. I recommend using ribbons. I take some thin ribbon used for wrapping around gifts, use bright colors. Cut off pieces about 30 inches long. Some people say tape it to the underside of the disc. I prefer to tape it on the top, directly in the middle of the disc. Use a piece of duct tape. Make sure the discs are warm and dry when you tape the ribbons on, they will stay on much better.

Put your discs in the car the night before you play. This will get them to the colder temperature that will make it so the snow will not stick to the discs if the temperature is close to freezing. If it's below 20 degrees, the snow will not stick.



Although many people think disc golf goes into hibernation during the winter months, the sport actually does not die when the air gets chilly! In fact, quite the opposite. Local leagues and clubs gather throughout the winter and continue to compete on a weekly basis. Tournaments, known as "ice bowls", are hosted during winter months and profits from the competition are typically donated to local charities and food banks.

Why Play in winter

If you do decide to play in winter, and you do the few things I have suggested, you will still have fun, and will keep in better playing shape for summer. Don't expect to score as low. There are some benefits to winter play. There are no bugs, there are few tall grass areas, the water hazards are much easier to deal with. There are very few people on the courses.

Winnebago County Parks is happy to announce...

WE WON!!!!

Greenfields Outdoor Fitness has awarded us with a matching grant to fund **OUTDOOR FITNESS EQUIPMENT** at Shelter #2 within the Winnebago County Community Park, right along the new shared use path. Exercisers of all abilities will be able to use these pieces of equipment as part of their fitness and wellness routine.

Studies show that exercising outdoors is better for you than exercising indoors.

As part of the forthcoming "**The Natural Way**" project this equipment sets the stage for more improvements that will touch upon the '**Live, Learn, and Play**' theme with *recreational, fitness and educational opportunities for all ages and abilities.*

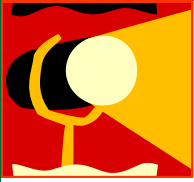
THANK YOU GREENFIELDS OUTDOOR FITNESS!



+ 5 more pieces!



Picture Yourself in Winnebago County Parks!

**Spotlight
On**

SNOWMOBILE SAFETY

Do You Need Wisconsin Snowmobile Education?



Wisconsin

You need education if you were born after Jan. 1, 1985, and will be riding on public lands in Wisconsin. You must be at least 16 years old to take this online course. Go to dnr.wi.gov for course registration info.

Elsewhere

Snowmobile education is currently required in several U.S. states and Canadian provinces.

Enforcement

All Wisconsin law enforcement officers and designated Wisconsin Department of Natural Resources officers and employees are authorized to enforce the Snowmobile regulations.

An operator who has received a signal from a law enforcement officer must stop his or her Snowmobile.

Is the Wisconsin Snowmobile License the same as the permanent Snowmobile Safety Certificate?

The permanent Snowmobile Safety Certificate is proof that you have successfully completed all of the components of an approved Snowmobile operator safety course. Since the Snowmobile education card or certificate does not expire and does not need to be renewed, it is not called the Wisconsin Snowmobile License.

Why Snowmobile Safety Education Is Important

Snowmobiles have increased the popularity of outdoor winter recreation. More than three million people in the United States and Canada snowmobile each winter, enjoying more than 230,000 miles of groomed public trails.

As trails and recreation areas become more crowded, it's especially important for people to operate these vehicles safely and responsibly.

Reciprocity

All states and provinces that have mandatory education requirements will accept the Snowmobile Safety Certificate. Likewise, Wisconsin will accept certifications that are issued by other states and provinces. (This is known as "reciprocity.")

Continued on page 6

Picture Yourself in Winnebago County Parks!



SUNNYVIEW EXPO CENTER EVENTS

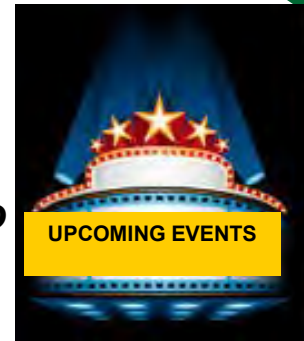
"HAPPY NEW YEAR"

January 9—User Group Meeting 9:30 a.m. Expo Bldg. South Wing. Agenda is available on our web site.

January 16 & 17—Winnegamie Dog Club Fox Valley Cluster Dog Show

January 22-24— Winnebago Home Builders Assoc. Home & Outdoor Living Expo

January 30— Winter Square Fair & Rummage Sale



Reminder to Expo Clients—if you do not have a current calendar deposit on file for your 2016 event, please contact the Parks Office as your date could be in jeopardy without a reservation deposit as the new Reservation Policy is now in place.

For a complete listing of Sunnyview Expo Center & Parks Department events check our website;
www.co.winnebago.wi.us/parks



WINNEBAGO COUNTY COMMUNITY PARK SHELTER RENTALS 2016

Shelter Rental reservations for 2016 begin at 8:00 a.m. on January 4, 2016 at the Parks Office, 625 E. Cty. Rd. Y #500, Oshkosh. Rental reservations are on a first come first served basis and payment must be made at the time of reservation.



Picture Yourself in Winnebago County Parks!



'THE CUT'

From the
Director's Chair

What does it mean for County Parks personnel to be "good stewards" of the 1,000+ acres of land Winnebago County has set aside for preserving natural habitat and addressing the recreational needs of its 168,000+ citizens. Generally, a steward is someone who manages the land holding(s) of another. For purposes of defining what good stewardship means in terms of County Parks personnel and how they go about fulfilling their duties for the people of Winnebago County, the following statements can be used to describe them:

Parks employees are committed land managers who -

Deeply care about the appearance and quality of the facilities and grounds under their care.

Have a love of nature and a willingness to be an advocate for groups and people who are likeminded.

Keep abreast of the characteristics and recreational interests of the community.

Have knowledge of the up and coming trends and newest insights within the recreation industry.

Are familiar with the most intricate features harbored within each of the Parks properties and who are able to enhance

and protect those features for public enjoyment.

Must be innovative yet frugal while working within a relatively small budget.

Carry with them a willingness and desire to help promote the important role that the Parks System has in supporting family values and the quality of life in Winnebago County.

The men and women who make up the staff of the Winnebago County Parks Department are hardworking individuals who are gratified by the work they perform. On a daily basis they are fortunate to bear witness to the upbeat and unassuming side of the public who come to enjoy the land and assets in their charge. For each of them it is rewarding to know that they are helping perpetuate the mission of the Parks Department in providing for the physical maintenance and development of County-owned park lands and facilitating the recreational programming thereof.

Regards,

Winnebago County Parks Director

Continued from page 3

Wisconsin-Approved Snowmobile Course

This course is approved and accepted by the Wisconsin Department of Natural Resources.

What's Included in an Approved Course

A wide variety of topics are included in this Wisconsin course.

- The basics of safe Snowmobile operation
- Responsibilities of Snowmobile riders to others and the environment
- General information on preparing for the unexpected

The educational content in this course can help you enjoy Snowmobile riding more safely and with less impact on the environment.

The Purpose of the Course

Snowmobile riding can be a fun, recreational pastime, but a snowmobile is only as safe as the person operating it.

Snowmobile safety education prevents accidents and saves lives. Whether or not your state requires it, all snowmobile operators have a responsibility to learn about proper and safe operation before hitting the snow.

Whether or not you are required to have snowmobile education in Wisconsin, the key to safe operation is knowing your snowmobile and using good judgment.

In addition to covering snowmobile safety, this Wisconsin Snowmobile Ed Course will help you develop the proper respect for your fellow snowmobile riders and the environment.

Snowmobile Ed strives to ensure this Wisconsin online Snowmobile safety course helps you become a safer and more responsible rider. Educated Snowmobile riders play an important role in making Wisconsin a leader in the conservation and preservation of wild lands.

Wisconsin Department of Natural Resources

101 S. Webster Street

P.O. Box 7921

Madison, Wisconsin 53707-7921

608-266-2621

<http://dnr.wi.gov/>



[Winnebago County Snowmobile Alliance Inc. trail maps are available at the Winnebago County Parks Office for a \\$2.00 donation. All donations go to the Alliance for trail map production.](#)

Picture Yourself in Winnebago County Parks!

WINNEBAGO COUNTY COMMUNITY PARK AND SUNNYVIEW EXPO USER GROUP MEETING

DATE: Saturday January 9, 2016
PLACE: Sunnyview Expo Center - South Wing
500 E. Cnty. Rd. Y, Oshkosh 54901
TIME OF MEETING: 9:00 a.m.

COMBINED TOPICS

- 1.) Cross over events
- 2.) 501C3 alcohol service policy
- 3.) OCVB update
- 4.) Economic Impact studies/surveys and user input
- 5.) New landscape treatment
- 6.) 2016 official sponsors

COMMUNITY PARK TOPICS

- 1.) New and returning events, The Natural Way project
- 2.) Update on roadway/shared use path/lighting project & tentative timeline for completion
- 3.) Impacts of roadway/shared use path/lighting project on other park facilities
 - a. A.D.A. upgrades & access paths to primary function areas
 - b. Archery range
 - c. Shelter #2 parking
 - d. Dog park
 - e. RC boating access
 - f. Tree plantings and landscaping
 - g. Park signage
- 4.) Prairie maintenance/burning
- 5.) Tree planting program (Emerald Ash Borer (EAB))
- 6.) Communication between Parks Dept. and user groups (i.e. kiosks)
- 7.) 2016 sponsors
- 8.) Questions and input

EXPO TOPICS

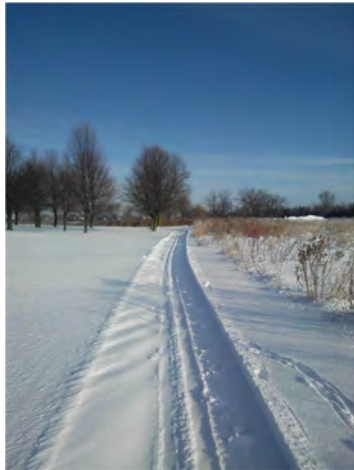
- 1.) New events
- 2.) Overview of current policies
 - a. Garbage pick up
 - b. PA system
 - c. Walk through necessity
 - d. Additional items of concern – stall destruction, hoof painting, permanent paint marking, duct tape, Dig-ger's Hotline
- 3.) New barn windows/fans, bridges, drainage, tree planting
- 4.) After hours contact
- 5.) New deposit procedure
- 6.) Expo bldg. PA system/ticket box office rental combination
- 7.) 2016 sponsors
- 8.) Questions and input

The intent of this meeting is to inform user groups of new developments at both the Sunnyview Expo Center and within the Community Park. Although the assemblage is not intended to be a Parks Committee Meeting, three or more members of the Parks Committee may be in attendance for purposes of observing the proceedings.

Upon request, provisions will be made for people with disabilities upon 24 hours prior notice to the Office of the County Clerk.
Phone Number: 236-4888.

Picture Yourself in Winnebago County Parks!

"Parks Picks"



Cross Country Ski Trail in the Park 2014

New Park Sign



HAVE PHOTOS TO SHARE? EMAIL TO vredlin@co.winnebago.wi.us or go to our Facebook page. We'd love to see how you are Picturing Yourself in Winnebago County Parks!



Havin' fun at the Best Friends Dog Park

Summer dreamin' at the Expo.



CORNERSTONE
PROCESSING SOLUTIONS INC.
Credit Card, ATM, and POS Processing Services



Winnebago County Parks Dept.
625 E. Cty. Rd. Y #500, Oshkosh WI
54901 (920)232-1960

www.co.winnebago.wi.us/parks

email:

vredlin@co.winnebago.wi.us.



Vines & Rushes
Winery



Picture Yourself in Winnebago County Parks!

