

4. **Asphalt replacement program**

A. PROPOSED 2014 BONDING - \$ ~~367,000~~ ⁻⁰⁻

B. PROJECT COSTS AND SOURCES OF FUNDS:

PROJECT COSTS:	2014	2015	2016	2017	2018	Total
Planning & design	\$ 35,000	\$ 15,000	\$ 22,000	\$ 11,000	\$ 19,000	\$ 102,000
Land purchase						-
Oshkosh HS building						-
Maintenance facility						
bldgs	332,000					332,000
PV shop tower sites		97,000				97,000
Parks area shop			215,000			215,000
Airport parking lots				104,000		104,000
Lifestage area					187,000	187,000
Other						-
Total costs	367,000	112,000	237,000	115,000	206,000	1,037,000
PROJECT FUNDS:						
G.O. Bonds or notes	367,000	112,000	237,000	115,000	206,000	1,037,000
Outside funding						-
Tax levy						-
Other <i>General Fund Balance</i>	<i>367,000</i>					-
Total funds	\$ 367,000	\$ 112,000	\$ 237,000	\$ 115,000	\$ 206,000	\$ 1,037,000

C. DESCRIPTION AND JUSTIFICATION:

Project Description: This project is a continuation of a multiyear project to repair or replace damaged and deteriorated pavement at various locations. The Courthouse parking lot was completed in 2006. The parking lots at Dawes Street Lot were rebuilt in 2011. Various other locations have been rated by the Highway Department and are outlined in a detailed plan. Paving projects have been prioritized in order of their condition, from the worst to the best. The pavement areas then were scheduled for replacement based on their relative priority.

Relationship to other projects and plans: The various paving projects would be coordinated with any significant remodeling or construction work done at each site. This would either delay or expedite some projects.

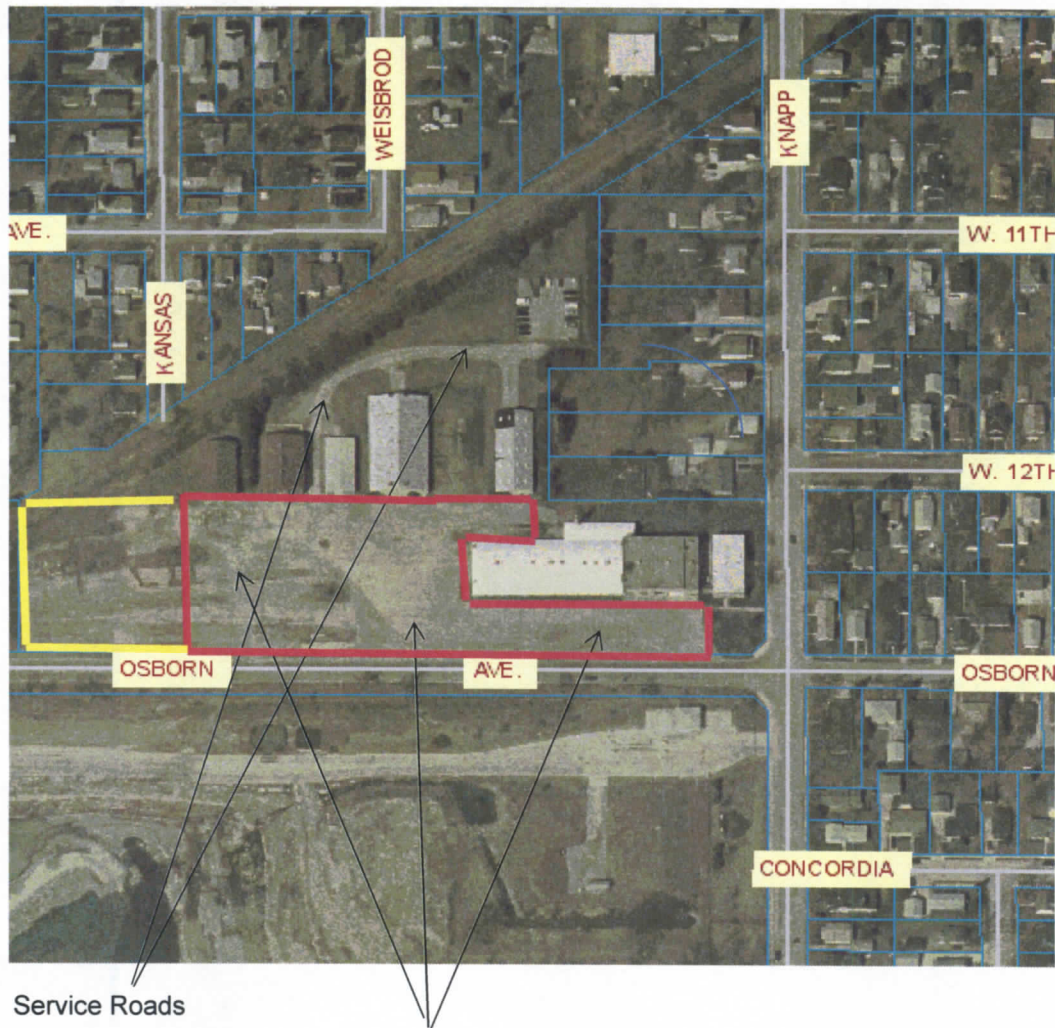
Justification and alternatives considered: This project is necessary to provide a safe driving surface for staff and the public. If this project is not completed the pavement will continue to deteriorate and eventually the lots will become gravel and mud.

There is a continual need to patch and repair the lots to keep them in a safe driving condition.

2014 Paving Plan
Maintenance Facility Parking Lot Repaving



2014 Paving Plan Maintenance Facility Parking Lot Repaving



Service Roads

Maintenance Facility Parking Lot

The area to be repaved is bounded by the red outline and the service roads

The area bounded by the yellow outline will be returned to grass. Any paving will be removed to the impermeable surface of the facility.