

**RESOLUTION: ADOPT TENTATIVE COUNTY
SUPERVISORY DISTRICT PLAN – OPTION 3**

TO THE WINNEBAGO COUNTY BOARD OF SUPERVISORS:

WHEREAS, under Wisconsin Statutes s. 59.10, county governments in Wisconsin are required to redistrict following completion of the federal ten-year decennial census to reflect shifts in population since the last census;

WHEREAS, to meet the statutory requirement for redistricting, county governments are required to create and adopt a tentative county supervisory district plan within 60 days after the results of the federal census is published by the State of Wisconsin, which occurred on March 21, 2011 and ending on May 19, 2011; and

WHEREAS, pursuant to Wisconsin Statutes, the tentative county supervisory district plan must be substantially equal in population for all districts (less than 10% deviation between all districts), keep districts relatively compact, generally keep municipalities contiguous and consider groups of community interest when redrawing supervisory district lines; and

WHEREAS, pursuant to Wisconsin Statutes, the Winnebago County Judiciary and Public Safety Committee has sought the input from local municipalities in the County to ensure their concerns are expressed in the creation of the tentative district plan; and

WHEREAS, the Winnebago County Judiciary and Public Safety Committee on April 18, 2011 agreed to forward two tentative supervisory district plans (identified as Option 2 and Option 3) onto the Winnebago County Board for a Public Hearing on said tentative plans; and

WHEREAS, pursuant to Wisconsin Statutes, on May 3, 2011 the Winnebago County Board of Supervisors held a Public Hearing on the tentative district plans (options 2 and 3).

NOW, THEREFORE, BE IT RESOLVED by the Winnebago County Board of Supervisors that Tentative Supervisory District Plan Option 3 better meets the requirements identified in Wisconsin Statutes relative to generally equal population in all districts (less than 10% deviation between all districts), keeps districts relatively compact, generally keeps municipalities contiguous, and reflects consideration of communities of interest.

BE IT FURTHER RESOLVED that the Winnebago County Board of Supervisors hereby adopts Tentative Supervisory District Plan Option 3 and transmits said Tentative Plan to each municipal governing body in the county for the preparation of local ward boundaries. In addition, said adopted Tentative Plan shall hereafter be referred to as the "Winnebago County Tentative Supervisory District Plan".

Submitted by:

PLANNING & ZONING COMMITTEE

Committee Vote: 5-0

Vote Requirement for Passage:

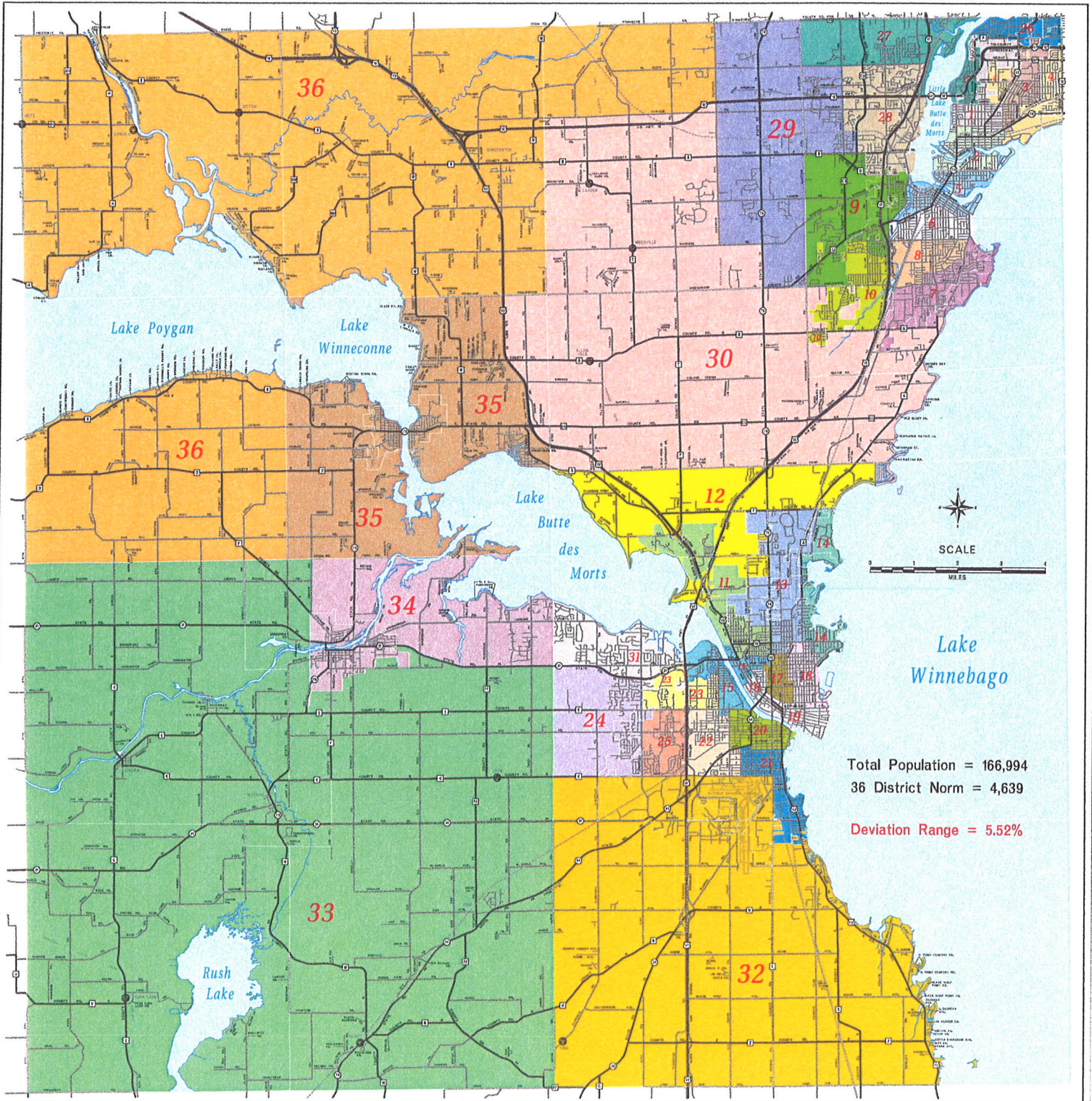
Majority of those present

Approved by the Winnebago County Executive this _____ day of May, 2011.

Mark L. Harris

Tentative Supervisory District Plan

Option 3



Total Population = 166,994

36 District Norm = 4,639

Deviation Range = 5.52%

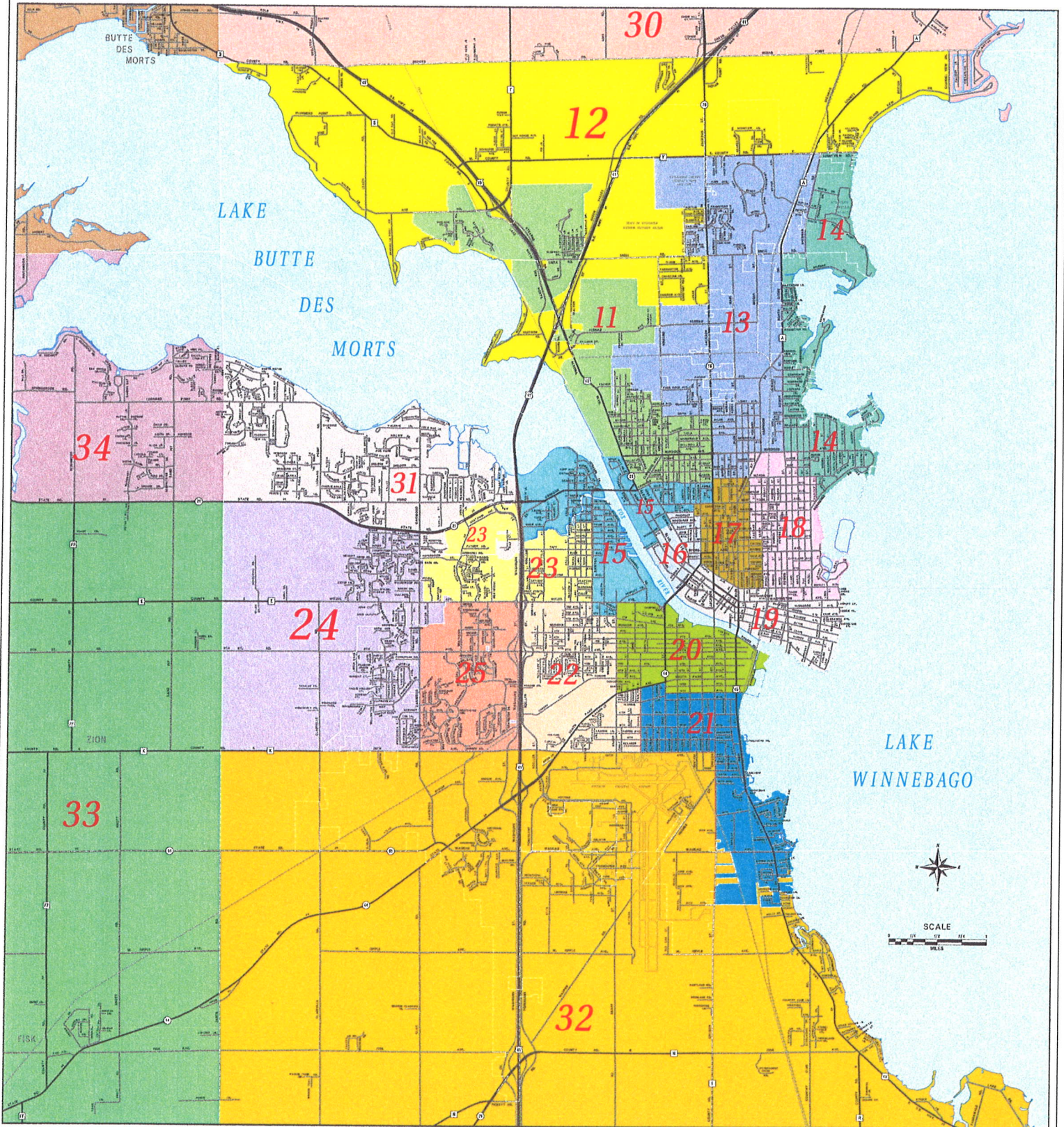
Winnebago County, Wisconsin

W.I.N.G.S. PROJECT DISCLAIMER
This data was created for use by the Winnebago County Geographic Information System project. Any other use or application of this information is the responsibility of the user and such modifications to it are at their own risk. Winnebago County disclaims all liability regarding the use of the information for any use other than Winnebago County business. Copyright © December 11, 2018 Winnebago County. This map reflects data which is provided by copyright.

Winnebago County
W.I.N.G.S. Project
Created By: daniel
10-11-2018
The Best of the North

Tentative Supervisory District Plan

Option 3



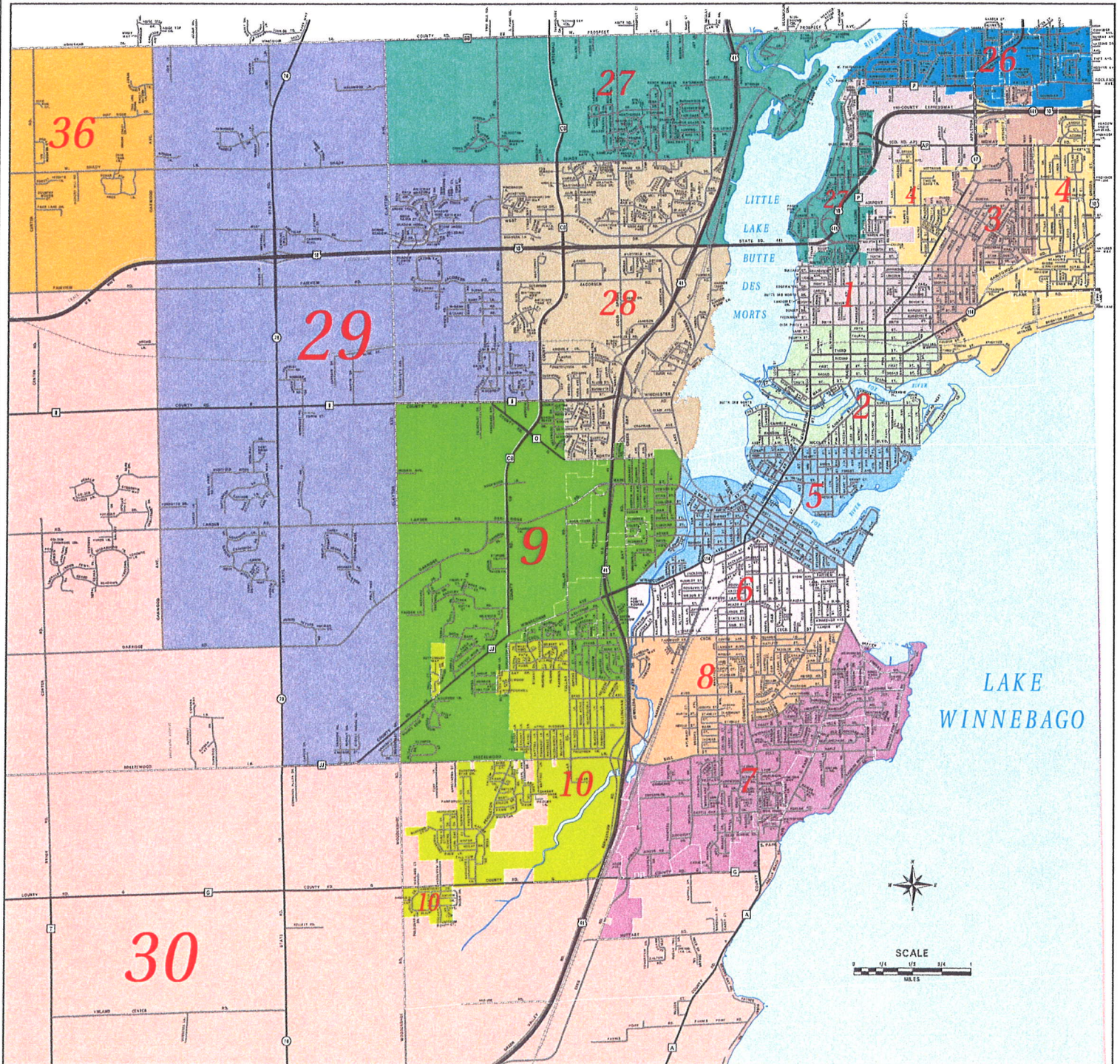
City of Oshkosh Area

W.I.N.G.S. PROJECT DISCLAIMER
 This data was created for use by the Winnebago County Geographic Information System project. Any other use or application of this information is the responsibility of the user and such use is made at their own risk. Winnebago County disclaims all liability regarding losses of the information for any use other than Winnebago County business. Copyright © December 11, 2004 Winnebago County. This map reflects data which is provided by copyright.

Winnebago County
 W.I.N.G.S. Project
 Created by: diane
 Apr 19, 2005
 for use of the County

Tentative Supervisory District Plan

Option 3



Cities of Neenah & Menasha Area

W.I.N.G.S. PROJECT DISCLAIMER
 This data was created for use by the Winnebago County Geographic Information System project. Any other use or application of this information is the responsibility of the user and such use/application is at their own risk. Winnebago County disclaims all liability regarding fitness of the information for any use other than Winnebago County business. Copyright © December 31, 2004 Winnebago County. This map reflects data which is provided by copyright.

Winnebago County
 W.I.N.G.S. Project
 Created By: dionee
 Apr 13 2005
 The Wave of the Future

Plan Option 3 Statistics

Deviation Range = 5.52% (-2.91 --> 2.61)

DISTRICT	TOTAL	DEVIATION	PERC. DEV.	INCUMBENT
1	4605	-34	-0.73	Konetzke
2	4616	-23	-0.50	Barker
3	4581	-58	-1.25	Englebert
4	4680	41	0.88	Eisen
5	4670	31	0.67	Ramos
6	4734	95	2.05	Miller
7	4721	82	1.77	Roh
8	4623	-16	-0.34	Smith
9	4624	-15	-0.32	Widener
10	4588	-51	-1.10	Hamblin
11	4673	34	0.73	Albrecht
12	4723	84	1.81	Gabert
13	4546	-93	-2.00	Swanson
14	4635	-4	-0.09	Thompson
15	4674	35	0.75	Lennon
16	4725	86	1.85	Reynolds
17	4636	-3	-0.06	Hall
18	4677	38	0.82	Wingren
19	4591	-48	-1.03	Jacobson
20	4726	87	1.88	Norton
21	4697	58	1.25	Warnke
22	4621	-18	-0.39	Robl
23	4620	-19	-0.41	Singstock
24	4587	-52	-1.12	Neubauer
25	4504	-135	-2.91	Kline
26	4619	-20	-0.43	Locke
27	4552	-87	-1.88	Hegg
28	4607	-32	-0.69	Finch
29	4678	39	0.84	Sievert
30	4550	-89	-1.92	Farrey
31	4648	9	0.19	Diakoff
32	4645	6	0.13	Brennand
33	4551	-88	-1.90	Egan
34	4652	13	0.28	Ellis
35	4655	16	0.34	Rengstorf
36	4760	121	2.61	Kriescher

Plan Development Consideration

- 1. equal population**
- 2. incumbency**
- 3. compactness**
- 4. wholeness of municipalities**
- 5. communities of interest**