

SUSAN T. ERTMER  
Winnebago County Clerk  
112 Otter Avenue, P.O. Box 2806  
Oshkosh, WI 54903-2806

NOTICE OF COMMISSION, BOARD OR COMMITTEE MEETING

Name of Committee: Parks & Recreation Committee  
Date & Time of Meeting: Tuesday, December 27<sup>th</sup>, 2022 at 3:30 p.m.  
625 E Cty Rd Y  
Oshkosh, WI 54901

Join Zoom Meeting

<https://us06web.zoom.us/j/84668967290?pwd=R0ZOS2pnZXlsZTBBrMEFEM1UzK3M4Zz09>

Meeting ID: 846 6896 7290

Passcode: 332397

One tap mobile

+16469313860,,84668967290#,,, \*332397# US

+19292056099,,84668967290#,,, \*332397# US (New York)

SUBJECT MATTER OF THE MEETING

1. Call to order
2. Approval of Agenda
3. Approval of December 13<sup>th</sup>, 2022 Minutes
4. Public Comment
5. **Discussion/Action** – Nominate Vice Chair of Parks Committee
6. **Discussion** – Changes to Parks and Recreation Ordinance 19.23 Camping, Overnight Mooring
7. **Discussion/Action** – Waukau Dam Capital Project 2023-2024
8. **Discussion/Possible Action** – Soccer Shelter Fee Discussion
9. **Discussion/Action** – Tables and Chairs Budget Adjustment – Sunnyview Exposition Center
10. **Update** - Parks Director on Potential International Pyrotechnics Guild (PGI) Conference
11. Parks Director Update
12. Staff Updates
13. Committee Updates
14. Next Meeting Date: January, 24, 2023 at 9:00am
15. Future Agenda Items:
16. Adjournment

**\*\*This meeting is also being posted as a Committee meeting for:**

- **Information Systems**

Upon request, provisions will be made for people with disabilities upon 24 hours prior notice to the Office of the County Clerk. Phone Number: 232-3430.

## **Parks & Recreation Committee Meeting Minutes**

Date & Time of Meeting: Tuesday, December 13, 2022 at 5:00 p.m.

Location: J.P. Coughlin Center

Present: Mike Norton, Jim Ponzer, Karen Powers, Steve Binder, Josh Belville

Also Present: Adam Breest and Ethan Hallenberger

1. Call to order:

Mike Norton called the meeting to order at 5:00 p.m.

2. Approval of Agenda:

Jim Ponzer moved to approve the agenda and Karen Powers seconded.  
Motion carried 5-0.

3. Approval of November 29, 2022 Minutes:

Steve Binder moved to approve the minutes and Jim Ponzer seconded. Motion carried 5-0.

4. Public Comment:

No comment.

5. **Discussion/Decision** – Changes to Park and Recreation Ordinance 19.18 Fireworks and Rockets

Adam Breest discussed the reasons for the request. He explained that as of right now, Winnebago County does not currently allow for fireworks to be utilized on County property. The are current events that utilize fireworks. Staff is requesting the recommended changes.

Parks Committee approved the modifications to Ordinance 19.18 as listed.  
Steve Binder moved to approve the modifications to ordinance 19.18 and Karen Powers seconded  
Request to Modify Ordinance 19.18 carried 5-0.

6. **Discussion** – Changes to Parks and Recreation Ordinance 19.23 Camping, Overnight Mooring

Adam Breest explained that County staff will be proposing changes to this section of Ordinance. This item will be brought to the committee for discussion at the December 27 meeting.

7. Update – County Executive and Parks Director on Potential International Pyrotechnics Guild (PGI) Conference

Ethan Hollenberger and Adam Breest informed the Parks Committee that the County is currently in negotiations to host the 2023 PGI Conference.

8. Next Meeting Date:

December 27 at 3:30 p.m. at the J.P. Coughlin Center, meeting room B. Moving time of meetings to 9 a.m., from January through April.

9. Future Agenda Items:

- Camping Discussion
- Waukau Dam Capital Improvement Request

10. Adjournment

Karen Powers made the motion to adjourn and it was seconded by James Ponzer. The motion carried 5-0. Meeting adjourned at 5:56 p.m.

Respectfully Submitted,  
Adam Breest

Exhibit A

Formatted: Centered

19.23 CAMPING, OVERNIGHT MOORING.

- (1) No camping or overnight parking shall be permitted in any park except at those areas designated as campgrounds or overnight mooring areas or unless permission has been given by the Director.
- (2) The following rules and regulations shall apply for the Sunnyview Exposition Center campground area:
  - a. ~~A non-electric site is \$20/Day. A 30amp electric site is \$35/day. A 50amp electric site is \$40/day.~~
  - b. The County reserves the right to establish seasonal opening and closing dates as well as the hours of daily access into and out of the campground at the Director's discretion.
  - c. Campers of legal age may bring alcoholic beverages along for their camping meals. No glass beverage containers are allowed outside of individual campsites. All recyclable materials must be separated and placed in the receptacle provided.
  - d. At no time may the noise on a campsite create a disturbance or interfere in any manner with other people's enjoyment of the facility ~~or use of the facility for a scheduled event.~~ Management reserves the right to determine if and when such behavior is considered disruptive and violators may be fined or ticketed.
  - e. All campers must register upon arrival. Registration procedures shall be established by the Director included within the reservation confirmation. No advance reservations will be taken. Available sites are distributed on a first come first served basis. Registrations during the hours of 11:00 a.m. to 7:00 p.m. are to be made at the Winnebago County Community Park Service Center or at an alternate Parks administrative office site as posted. Upon closure of the Service Center facility campers will be allowed to utilize the self registration station available at the Sunnyview Exposition Center campground site.
  - f. The person registering for a camp site must be a minimum of 18 years of age and a site may not be occupied by more than a "non-family group" of six persons or an immediate "family" of parent(s) Chapter 19 – Park and Recreation Operations Revised 12/17/19 with their dependent children and not more than 2 guests, and their immediate children.
  - g. Campsites are rented for the duration agreed upon during the registration process. Extensions of stay will be made at the office noted above during the office hours posted. Campsite extensions must be made through the office no later than the day before a scheduled departure.
  - h. Checkout time is 1:00 p.m. No refund will be given for the current night after the 1:00 p.m. checkout time.
  - i. The campground is closed to non-campers between 10:00 p.m. and 7:00 a.m. All visitors must leave the campground by 10:00 p.m. During closed hours, campers must be in or be in route to their campsite. No camping party may set up or take down a camping unit between the hours of 11:00 p.m. and 6:00 a.m.
  - j. Firewood from more than 50 miles away or from other states may not be brought into Wisconsin recreational sites as per WDNR regulations. Said firewood will be confiscated without reimbursement. All campers shall follow the most current Wisconsin Firewood

Commented [BA1]: Clean up

Regulations. Every fire must be a contained fire and all state statutes and local ordinances concerning open fires will apply. All fires must be out by 11:00 p.m.

~~Dimensional lumber such as two by fours or two by tens that have been dried in moisture and temperature controlled kilns are exempt from the out of state rule.~~

Burning of pressure treated lumber or other type of treated lumber is prohibited. Burning of household refuse is prohibited.

- k. The campground is considered to be ~~primarily a~~ carry-in/carry-out facility with a small dumpster provided for a very modest amount of use by campers. Campers are required to use available hot coal bins and containers for recyclables as deemed appropriate.
- l. Campers may not switch sites without prior approval.
- m. Motor vehicles are restricted to designated parking areas on each campsite. No more than ~~two-one~~ motor vehicles are allowed per campsite. Alternative off-site parking may be available for an additional fee. Campers towing an animal trailer or other vehicle must use drive-thru sites. Semi or flat-bed trailers are not allowed within the campground.
- n. Campers are required to collect and ~~dispose of dish and hand washing water at the Sunnyview Exposition Center dumping station or to~~ hold onto ~~such materials~~ waste water for later elimination at an appropriate off-site facility. Additionally, it is against health and safety rules to dump gray or black water on the ground. Violators will be cited and/or expelled from the campgrounds without refund.
- ~~o. Campsites must be vacated by 1:00 p.m. on the last day of the permit period.~~
- ~~p.o.~~ Violation of any County, City, or State law, or Department of Natural Resources rules by any member or guest of the camping party is cause for revocation of the camping permit and eviction from the property as well as possible citation.
- ~~q. Payment for sites must be made by cash or check only.~~
- ~~r.d.~~ No hunting is allowed in lands adjacent to the campground. See Section 19.17 of the Chapter 19 – Park and Recreation Operations Revised 12/17/19 Winnebago County Ordinances regarding firearms on County properties.
- ~~s.g.~~ No metal detectors are allowed within the grounds of Sunnyview Expo Center.
- ~~t.r.~~ Use of any sound truck, loudspeaker, or other device that produces excessive, sound or unusual noises is prohibited. Management reserves the right to determine what constitutes a breach of this provision.
- ~~u.s.~~ Generators with mufflers are permitted within the campground ~~at all times.~~ Generators are not allowed to be run from 11pm – 6am during quiet hours. Campers will be required to take precautions to direct exhaust fumes away from adjacent campsites.
- ~~v.t.~~ No one may engage in violent, abusive, indecent, profane, unreasonably loud or otherwise disorderly conduct, or conduct which tends to cause or provoke a disturbance or create a breach of peace. Management reserves the right to determine what constitutes the above behaviors. Violators will be expelled from the premises and/or ticketed.
- ~~w.u.~~ \_\_\_\_\_ Pets are permitted within the campgrounds. To the exclusion of pets such as horses and ~~domestic pack animals,~~ all other pets must be kept on a leash no longer than 8 feet at all times. All pets must be under control at all times. Pet owners are not

Commented [BA2]: Look up

allowed to let their pets interfere in any manner with the enjoyment of the facility by others. Pet owners who fail to properly control a pet or whose pet creates a public nuisance or other disturbance may be ordered to ~~entirely~~ leave the Sunnyview Exposition Center grounds and/or be issued a citation. Horses and domestic pack animals must be tied or picketed at all times. Horses and domestic pack animals are not to be tied to any object permanently located within the campground. Grazing must be contained within the designated campground area. Pet owners are responsible for proper removal and disposal of their pets' waste products.

~~\*v.~~ No motor bikes, ATV's, Segways, ~~skateboards, roller blades~~ or the like or any other personal mobility device may be operated within the campgrounds except those for handicapped individuals. Bicycles, ~~Skateboards, and roller blades~~ will be permitted.

~~y.~~ ~~The toilet shower building located within the grounds of the Sunnyview Exposition Center is not to be used by overnight campers within the campgrounds.~~

~~z-w.~~ The County will not be obligated to provide prior notice to campers who may be assigned to alternative campsites at the discretion of the Director or his/her designee due to need and circumstance. Furthermore, campers will not be subject to receipt of any type of remuneration by the County for such reassignment nor will campers receive monetary reimbursement in order to compensate for areas of the campground made unavailable for use due to acts of God or manmade cause.

~~aa-x.~~ ~~Parties shall be required to provide a minimum of two (2) days prior notice when requesting consideration for group camping. Rates and campsites to be used by said parties will be determined on a per group basis depending on the amount of campsites used and number of campers on site.~~

---

**To:** Winnebago County – Parks and Recreation Committee  
**From:** Raine Gardner, PE & Eric Thompson, PE  
**Subject:** Waukau Dam Site Master Plan  
**Date:** June 13, 2022

---

Upon completion of the Waukau Dam Site concept plan and study in July 2021, MSA was asked to consider an overall site Master Plan that would further refine the concept plan, study the hydraulics of the site, and develop a proposed cost estimate for the plan. The Waukau site currently includes a fish holding pond that is extremely popular and is controlled by an existing dam system. In addition, to the pond area, the surrounding area has about 3-miles of mountain bike trails that flow along steep hillsides and through deep ravines on the north and north eastern sides of the properties.

In May 2022, MSA concluded the Waukau Dam Site Master Plan. The Master Plan phase included a site topographic survey, hydraulic/hydrology analysis, and a final park master plan with a proposed cost estimate. The overall topographic survey was completed to cover the entire park area to not only provide data for the site hydraulic analysis, but to provide the county with information that can be utilized to develop a park map of the site amenities, including the bike trails. Upon completion of the topographic survey, the information was utilized to consider the effects of the overall park dam system to develop a better understand of how to control the flows of the Waukau Creek through the park and lower maintenance issues due to flooding. The below section describes the overall hydraulic analysis performed:

A Flood Insurance Study (FIS) for Winnebago County was published in 1982, which included Rusk Creek/Waukau Creek from STH 116 to 1.73 miles upstream of 8 Mile Creek. This FIS study included a detailed one-dimensional model of the reach; flow rates for the 10-year (10% annual exceedance probability (AEP)), 50-year (2% AEP), 100-year (1% AEP), and 500-year (0.2% AEP) storm events; and base flood elevations (BFEs) for various sections of Rush Creek/Waukau Creek. See Figure 1: FEMA FIRM Map attached.

Additionally, MSA reviewed the original dam plans developed by Ayers Associates in 1966 and dam repair plans developed in 2004. MSA also received information from Wisconsin Department of Natural Resources (WDNR) regarding past discussions and concepts for modifying the pond and river dams. With the review of the site, the information gathered and processed would provide guidance as to whether the dam structures needed to be replaced, modified, repaired, or just need some minor adjustments to help control the flooding within the site.



## MEMO

June 14, 2022

---

### **Waukau Site Hydrology**

Approximately 82.1 square miles drain to Rush Creek/Waukau Creek at the Waukau Dam Pond site. See the drainage watershed boundary map which illustrates the area draining to the park location, including Rush Lake and Eightmile Creek. Using StreamStats, USGS Regression equations, and gage analysis of four (4) nearby gages, MSA confirmed the validity of the flows from the FIS and extrapolated flows for the 2-year (50% AEP), 5-year (20% AEP), 25-year (4% AEP), and 200-year (0.5% AEP) storm events to assess a wide range of events within the park. Additionally, during the analysis MSA looked at several flows to determine when and how the pond overflows. See Figure 2: Watershed Boundary Map attached.

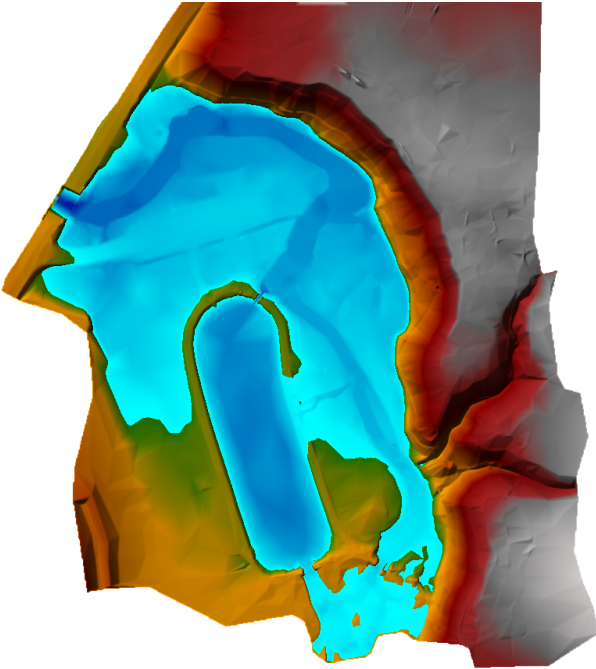
### **Site Hydraulics**

Given the complicated nature of the creek and pond dams within the park, MSA felt that a one-dimensional model would not adequately capture the flow split at the Upper Pond Dam and River Dam, or the overtopping of the pond. Therefore, MSA built a two-dimensional model of the site based on survey of the park performed by MSA in December 2021. The model included the park land from STH 116 to the southern boundary. Structures included in the model are the Upper Pond Dam, Lower Pond Dam, River Dam, and the bridge at STH 116. (*See Site Master Plan for dam and bridge locations on the site.*) The surveyed surface includes the bike trails to the east, the parking lot to the north, the pond berm, walkways, and the creek. See the attached Park Master Plan for the dam locations within the site.

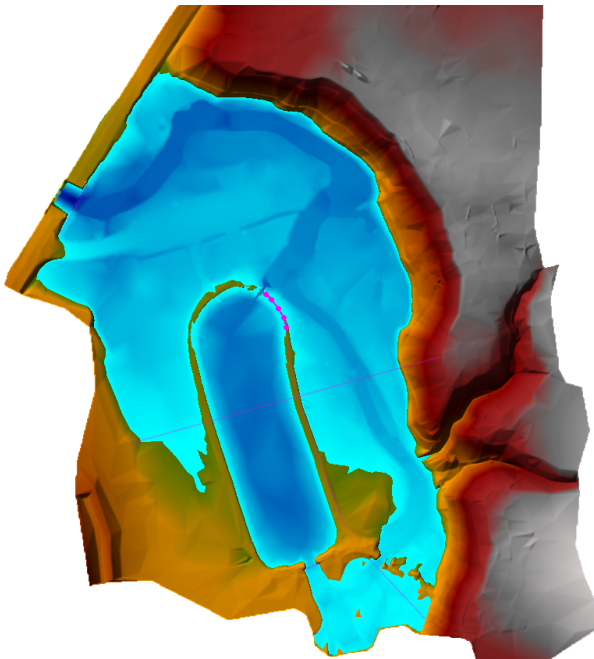
### **Existing Hydraulics**

Two “existing conditions” models were developed. One model included the current washed out berm and ditch created from the last pond overflow and the other assumed this breach was fixed. These models were run to show at what flow the pond overflows with the dam stoplogs at their existing elevations. The pond with the washout included overtops at 200 cfs, while the repaired berm overtops at 260 cfs. Note that these flows are well below even the 2-year (50% AEP) storm event, which has a flow of 600 cfs. In both conditions, during the 100-year (1% AEP) flow of 1,976 cfs, the entirety of the pond and creek are inundated. See the below figures snipped from the hydraulic model developed for the site:

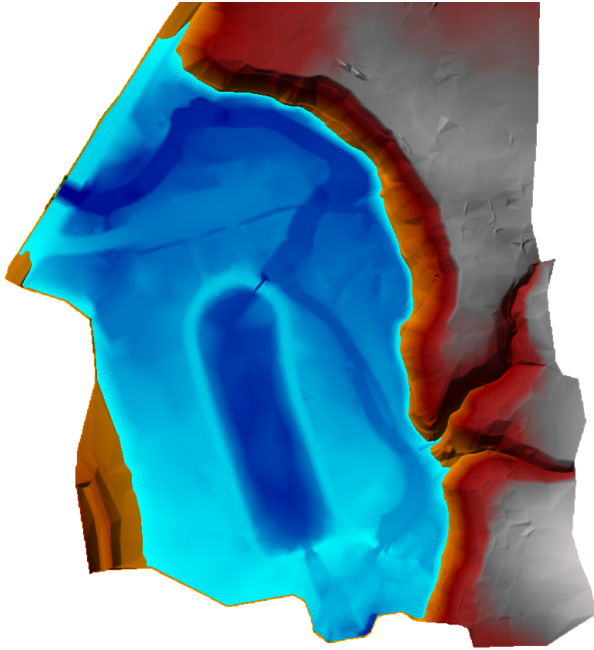
**Existing Site with a flow of 200 CFS**



**Repaired Site with a 260 CFS flow**



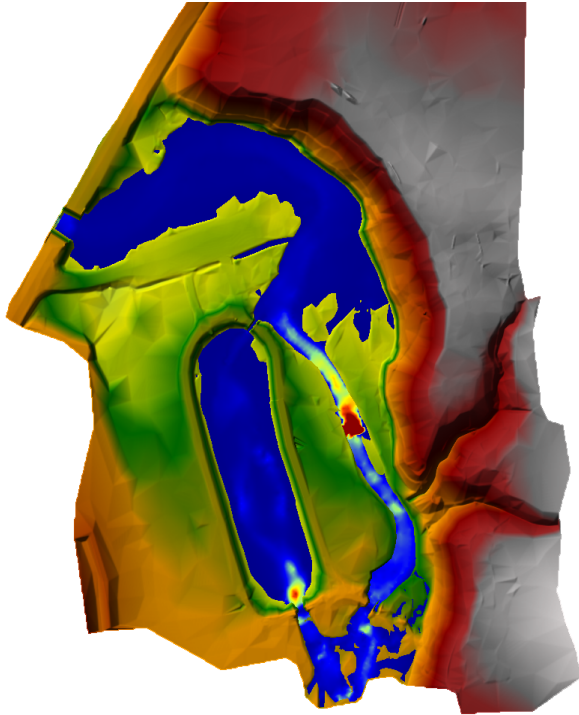
**Repaired Site at the 100 year Storm Event**



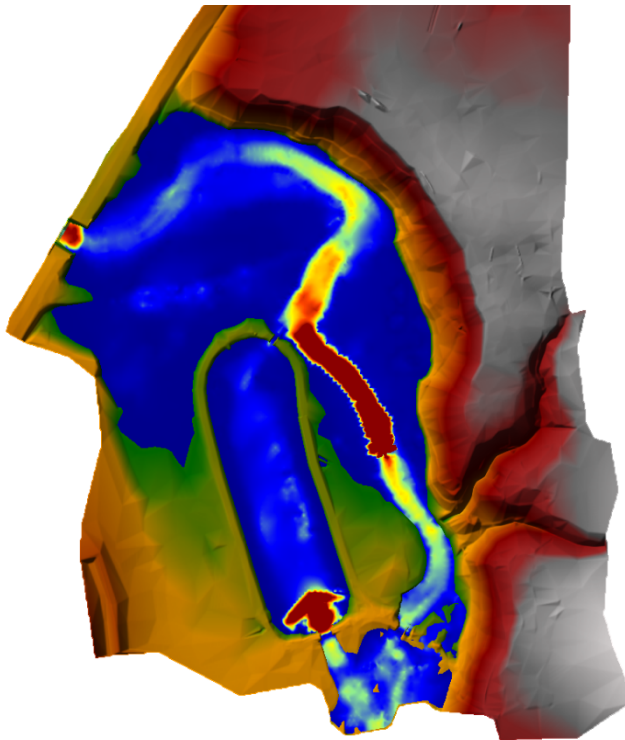
**Erosion**

Given the three dams and bends in the creek, there are areas with high velocities and shear stresses on the banks. MSA is recommending armoring on several of the banks based on site observations and velocities obtained from the hydraulic model. The figures below show the locations of high velocity for flows of 50 cfs, 260 cfs, 1,495 cfs (25-year, 4% AEP), and 1,976 cfs (100-year, 1% AEP). See the below the figures indicating the high erosive areas during each event.

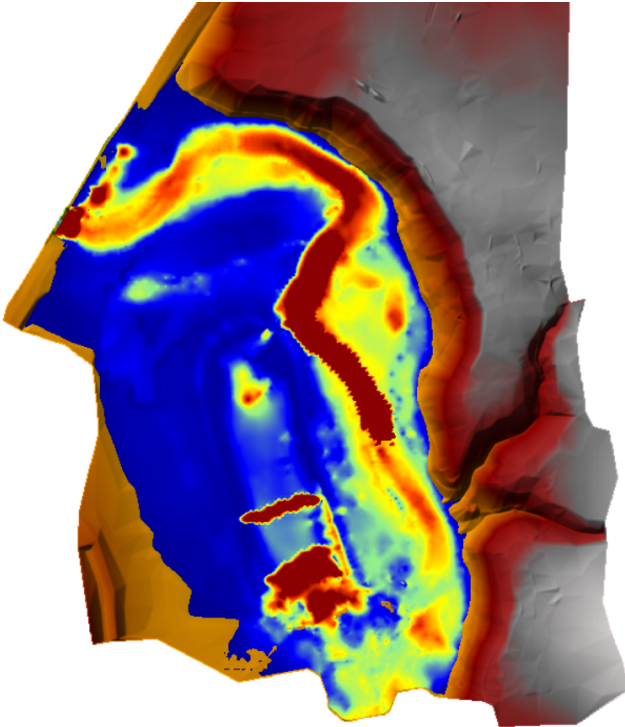
**Overall Site indicating Erosive Velocities at 50 CFS**



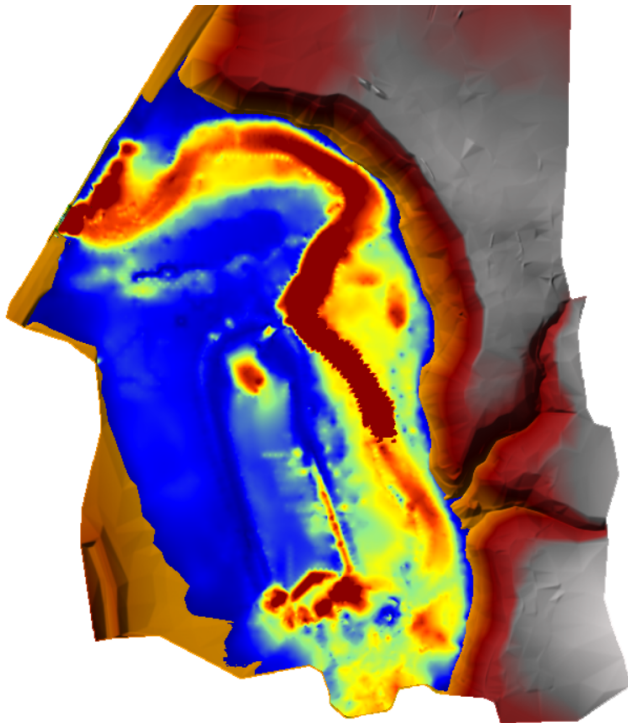
**Overall Site indicating Erosive Velocities at 260 CFS**



**Overall Site indicating Erosive Velocities at Q25**



**Overall Site indicating Erosive Velocities at Q100**



## MEMO

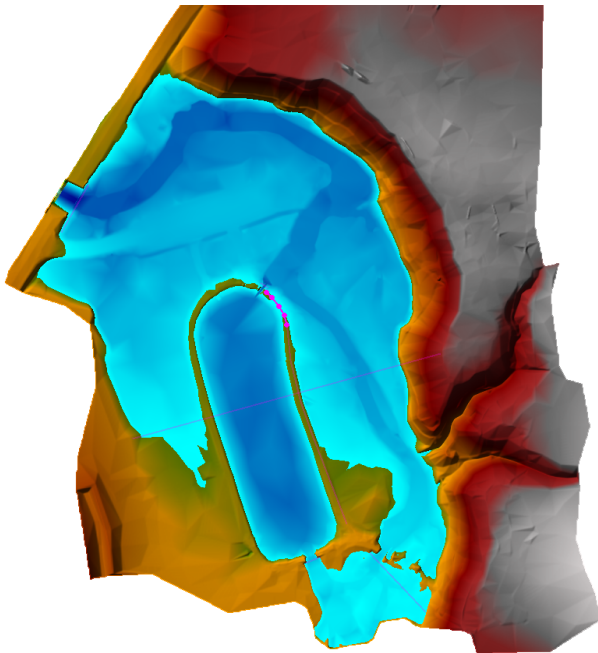
June 14, 2022

---

### **Alternative Solutions**

MSA looked at three (3) potential alternative solutions to reduce the washout potential of the Waukau Dam Pond. The alternatives analyzed included:

Alternate 1 consists of closing one bay on the Upper Pond Dam and lowering the stoplog elevations at the River Dam to be even with the Upper Pond Dam. This alternative served to reduce the amount of flow overtopping the pond berm by approximately 0.3-ft. However, the overtopping flow remains at 260 cfs. See the below Figure: Alternative 1: Closed 1 Bay on Upper Pond Dam & Lowered Stoplogs on River Dam – 260 CFS.

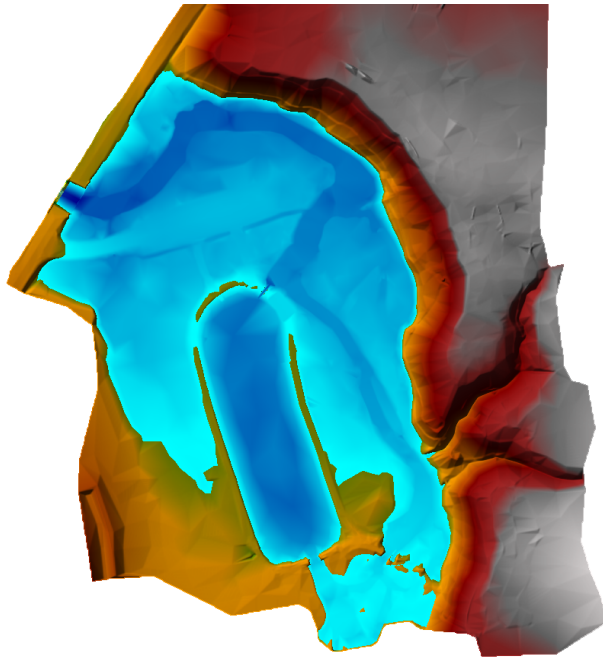


Alternate 2 includes installing a 50-ft wide, 2-ft deep emergency spillway with a trail bridge across the pond berm (set at the existing elevation of the path), as suggested by WDNR in 2004. Alternative 2 pushes back overtopping slightly, containing the water so that 275 cfs can flow through the system. See the below Figure: Alternative 2: Emergency Spillway Across Berm (with Trail Bridge) – 275 CFS.

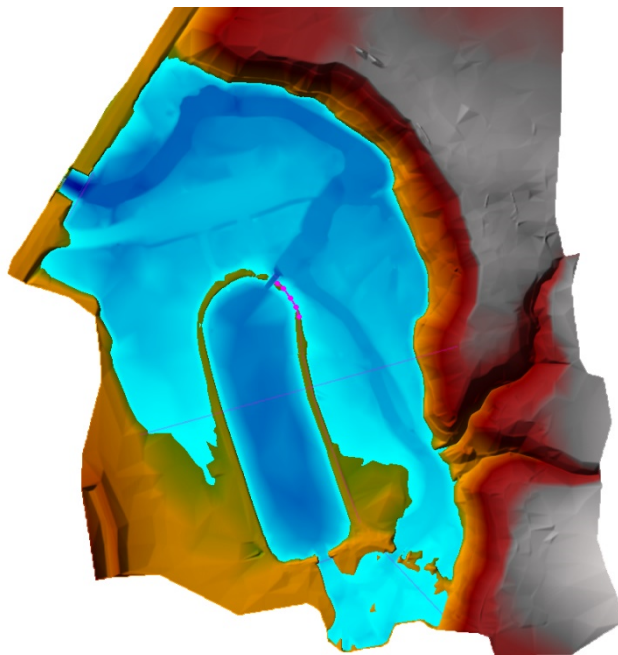
**MEMO**

June 14, 2022

---



Alternate 3 proposes increasing the capacity of the Lower Pond Dam by increasing the opening from 8-ft to 12-ft wide. Alternative 3 also overtops at a flowrate of 260 cfs but allows less overtopping at that flowrate as compared to Alternative 1 by approximately 0.2-ft. See the below Figure: Alternative 3: Increased Capacity of Lower Pond Dam – 275 CFS.



## MEMO

June 14, 2022

---

Based on the results of the possible alternates analyzed as listed above, making structural changes to the dams would not significantly affect the flooding or overtopping of the Waukau Dam Pond. In addition, after understanding the overall dam system and the area is completely within the floodplain, there is not a high enough cost benefit with any of the above options to make it worth the cost of the repair/retrofit investment. Therefore, it is recommended to change stop log elevations for the Upper Pond Dam and River Dam before large storms to balance the flows or as the pond nears its overtopping elevation to prevent washout. Additionally, as the 2-year (50% AEP) storm event inundates the park and overtops the pond, armoring adjacent to the dams and along known washout locations of the berm are recommended to reduce washout potential when the pond overtops. Maintenance crews should plan to assess and remedy any damage done to the berm or dam locations after large rain events.

### **Dam Structure Visual Review**

The existing dam structures on the site were reviewed in the field for visual observations performed by a structural engineer. Visual observations provided MSA with direction on how to address the dam structures for repairs, if the structures were to remain on the site. MSA was able to provide options to repair the overall park area, dam structures, more resilient pond and creek shorelines, and consider ADA compliance of the overall space.

The structural visual review provided the following comments:

- No major concerns were observed with the structural elements of each dam structure.
- Replacement of the Upper and River dam catwalks would be important to reestablish trail connections.
- Upper Dam could utilize some epoxy crack sealing.
- Removing the existing trees and stumps overgrowing the Upper and River Dam structures would be critical to help prevent future damage to them.

With the above hydraulic and physical site evaluations, MSA assembled a Waukau Dam Site Master plan that was presented to the Parks and Recreation Committee in May 2022. Prior to the presentation and after, County staff have provided comments to help support and modify the plan to develop and bring forth a final and feasible Park Master Plan to present to the County for future engineering and development in 2023/2024. Again, with these comments, the final park master plan includes the following recommendations that are highlighted in the attached colored plan with supporting character images:

- **Dam Structures-**

- Upper Pond Dam Repairs: repair fish deterrent, replace catwalk and railing over the dam, reinforce side slopes around dam walls, clear and grub trees around and away from the structure, pave the approaches to the structure and add railings for ADA compliance and safety.
- Lower Pond Dam Repairs: adjust the stop logs, replace the existing railings with complaint ones, reinforce the side slopes with Armorflex matting in overflow area and a turf reinforcement mat in other areas that have had previous erosion. Further supplement the rip-rap around the dam and adjacent along the creek to prevent future erosion, pave the approaches to the dam and add railings along the approach paths, as shown on the plan.
- River Dam Repairs: add Armorflex matting alongside of the dam walls to prevent further erosion along the dam, replace the catwalk and railing over the dam, reinforce the side



slopes with rip-rap and/or gabion baskets, clear and grub alongside the dam walls, repair the stone walls east of the dam and reestablish the trail connection, pave the approaches to the dam and add railings for ADA compliance and safety.

- **Parking Lots –**

- Lower Lot - Regrade the parking lot to correct the drainage issues within the lot, provide a new base and pave the parking lot with asphalt pavement along with the entrance driveway. Then strip and sign the lot for ADA and parking stalls. New parking lot lighting with an electrical service shall be added for security and safety purposes. A concrete sidewalk shall be added per the master plan to connect the trails and accessible parking stalls to them. In addition, this walk will connect the accessible picnic areas and portable bathrooms.
- Upper Lot – Add a new parking lot on the north end of the site to allow for mountain bikers to access the upper trails from CTH K. The lot shall include extra pavement reinforcing to allow for farm equipment access along the parking lot driveway which also overlaps a farm easement. The parking lot shall be paved, stripped, and marked for ADA compliance. An adjacent concrete sidewalk shall be added to connect the stalls to the trails, a bench and a bike fix it station. Lastly, a new electrical service and one parking lot light shall be added at this northern lot location again for security and safety purposes. With the addition of this parking lot, the mountain bike access point off of STH 116 shall be closed off and restored as turf, as this entrance is not a safe location for the public to be parking and accessing the trails.

- **Overall Park Area –**

- Accessible trails shall be re-established within the space to connect the various amenities. These trails shall be graded to ADA compliant slopes and compacted with proper trail gravel for accessibility. The trails shall connect various benches on concrete pads around the pond, ADA compliant floating fishing piers, and the existing stationary fishing pier. The trails shall connect to the existing dam structures to access over them as well. The main easterly trail between the parking lot and pond shall be maintained for fire truck access to allow local fire departments access to the pond for water usage. The trail shall be paved with additional reinforcement to withstand the truck weights.
- Various shoreline armorment along the pond and creek slopes shall be considered as well to prevent further erosion and vegetation re-establishment. Just south of the lower pond dam, the trial will dip slightly to work like a weir along the pond to force the pond water to exit the pond through an area that has a reinforced shoreline, to hopefully prevent future erosion when the pond needs to overflow to the creek directly.
- Two new floating fishing piers shall be developed on the site to access various points of fishing on the pond. The existing stationary pier shall be re-decked and new railing established on the pier.
- Between the pond and parking area, this area shall be turned into a picnic area. Another picnic table will be located on a concrete pad for accessibility. East of the main trial between the pond and parking lot, a paved concrete pad covered with an open-air (20'x20') shelter will be established to provide a covered, accessible picnic area.
- New and existing park signage and information will be established in the park.
- Portable bathrooms shall be placed on the designated concrete pads to allow for restrooms at the site. Permanent restrooms would not be allowed at this site, due to the floodplain restrictions. In addition, no other enclosed structures are allowed, due to the floodplain.

## MEMO

June 14, 2022

---

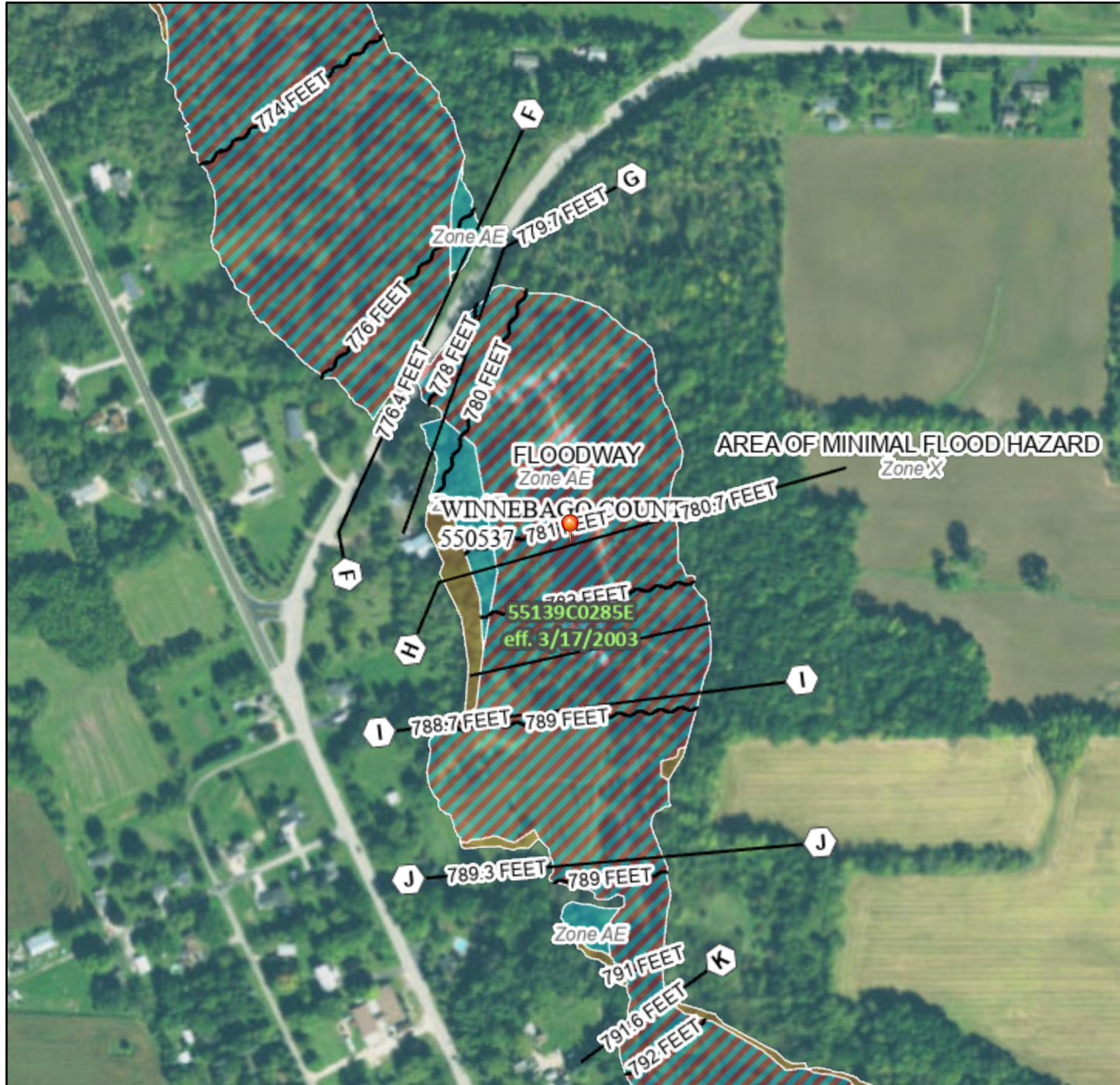
All the above recommendations can be viewed in the attached **Park Master Plan** with leaders denoting the proposed amenity locations on the site. With these recommendations, MSA has developed an overall proposed construction cost estimate for the total project. The estimate is attached for the County to consider for future project funding and timing to complete the proposed plan. No phasing was considered with this project, as the Parks Committee provided recommendations to consider the full project as one to complete the project overall and bring the site into compliance for not only usage, but accessibility. In addition, with the park master plan, it is planned and desired that the proposed repairs will establish the site to be more resilient to flood events to lower the County's park maintenance in the future.

# National Flood Hazard Layer FIRMMette



Figure 1.

88°46'36"W 43°59'50"N



## Legend

SEE FIS REPORT FOR DETAILED LEGEND AND INDEX MAP FOR FIRM PANEL LAYOUT

SPECIAL FLOOD HAZARD AREAS		Without Base Flood Elevation (BFE) Zone A, V, A99
		With BFE or Depth Zone AE, AO, AH, VE, AR
		Regulatory Floodway
OTHER AREAS OF FLOOD HAZARD		0.2% Annual Chance Flood Hazard, Areas of 1% annual chance flood with average depth less than one foot or with drainage areas of less than one square mile Zone X
		Future Conditions 1% Annual Chance Flood Hazard Zone X
		Area with Reduced Flood Risk due to Levee. See Notes. Zone X
		Area with Flood Risk due to Levee Zone D
OTHER AREAS		NO SCREEN Area of Minimal Flood Hazard Zone X
		Effective LOMRs
GENERAL STRUCTURES		Area of Undetermined Flood Hazard Zone D
		Channel, Culvert, or Storm Sewer
OTHER FEATURES		Levee, Dike, or Floodwall
		20.2 Cross Sections with 1% Annual Chance Water Surface Elevation
MAP PANELS		17.5
		Coastal Transect
OTHER FEATURES		Base Flood Elevation Line (BFE)
		Limit of Study
OTHER FEATURES		Jurisdiction Boundary
		Coastal Transect Baseline
OTHER FEATURES		Profile Baseline
		Hydrographic Feature
MAP PANELS		Digital Data Available
		No Digital Data Available
		Unmapped
		The pin displayed on the map is an approximate point selected by the user and does not represent an authoritative property location.

0 250 500 1,000 1,500 2,000 Feet 1:6,000  
 Basemap: USGS National Map: Orthoimagery: Data refreshed October, 2020  
 88°45'59"W 43°59'24"N

This map complies with FEMA's standards for the use of digital flood maps if it is not void as described below. The basemap shown complies with FEMA's basemap accuracy standards

The flood hazard information is derived directly from the authoritative NFHL web services provided by FEMA. This map was exported on 6/14/2022 at 11:51 AM and does not reflect changes or amendments subsequent to this date and time. The NFHL and effective information may change or become superseded by new data over time.

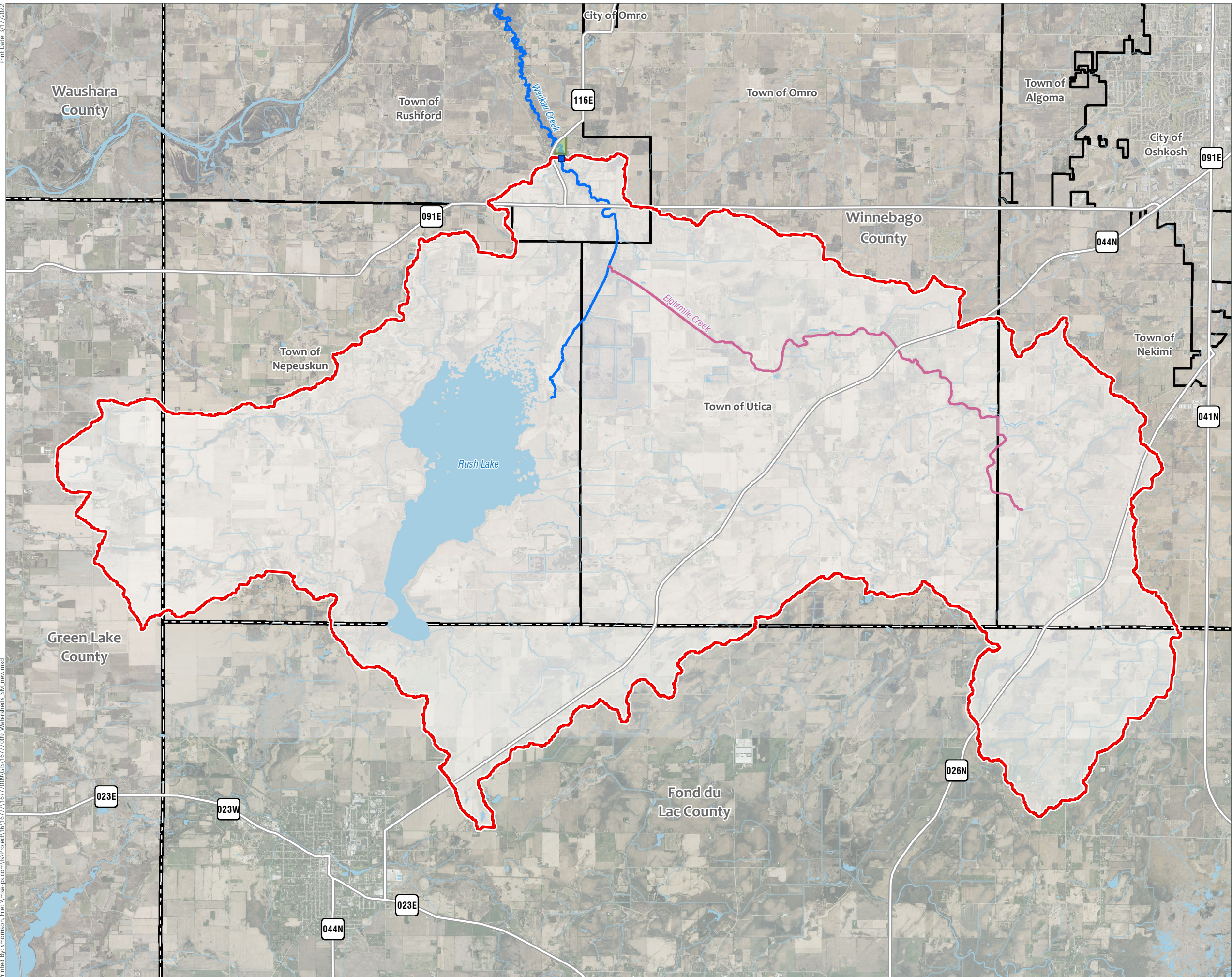
This map image is void if the one or more of the following map elements do not appear: basemap imagery, flood zone labels, legend, scale bar, map creation date, community identifiers, FIRM panel number, and FIRM effective date. Map images for unmapped and unmodernized areas cannot be used for regulatory purposes.

Figure 2.

# Watershed Boundary

## Waukau Dam Master Plan

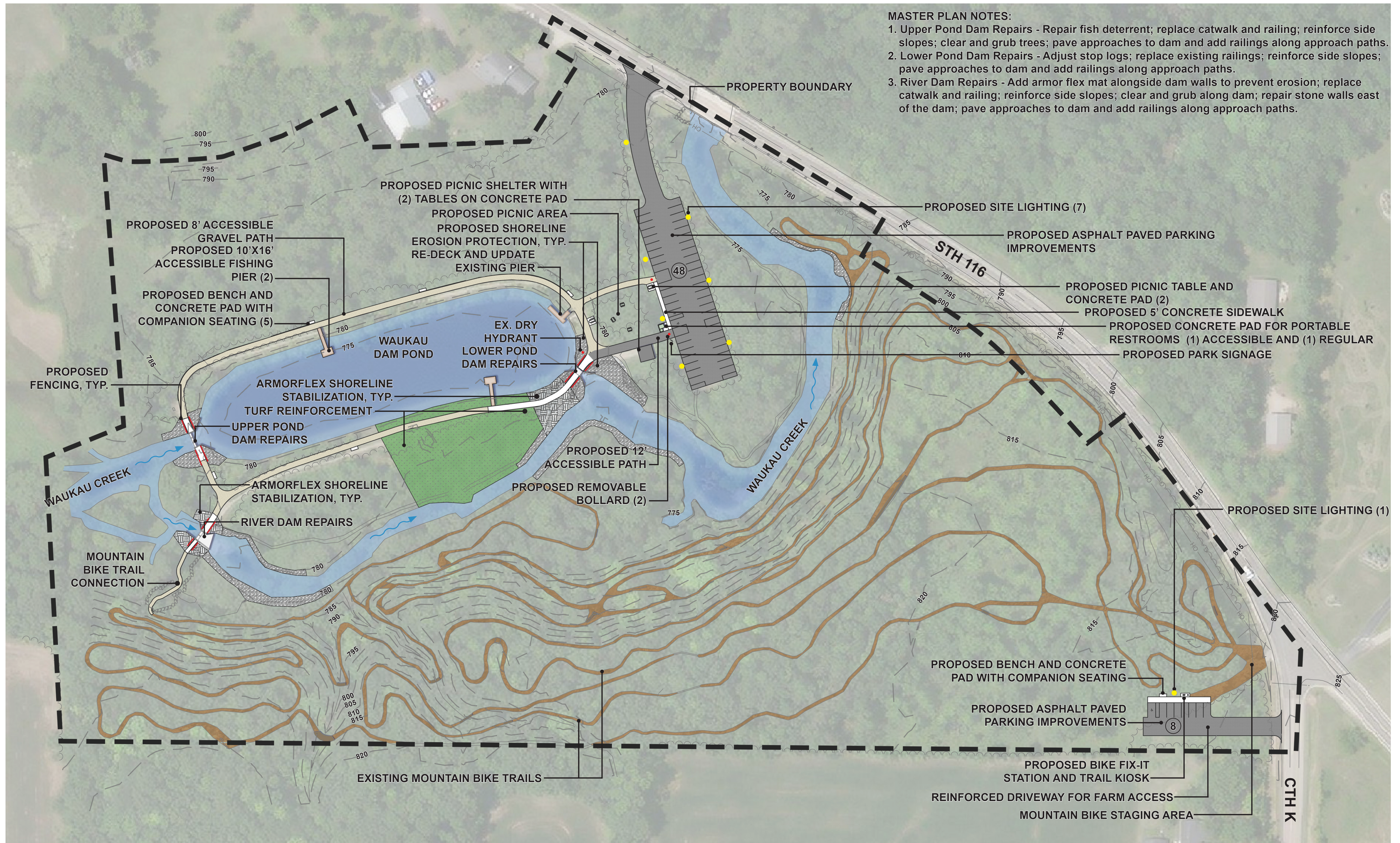
### Town of Rushford Winnebago County, WI



- Global Watershed Point
- Wisdot Major Highways
- ~ Eightmile Creek
- ~ Waukau Creek
- ~ Waterway
- Waterbody
- Global Watershed Boundary
- Park Location
- Municipal Boundary
- County Boundary

Data Sources:  
 Winnebago County GIS (2021)  
 WDNR: County Bounds and Waterways  
 Basemap: WDNR (2020)  
 FIS Report: MSA (2022)

Print Date: 3/17/2022  
 Printed By: smorison, File: \\msa-ps.com\GIS\Project\161677\167709\GIS\1677099\_Watersheds\_SM\_new.mxd



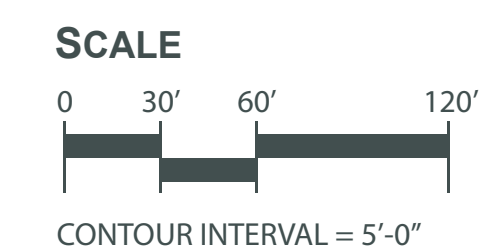
**MASTER PLAN NOTES:**

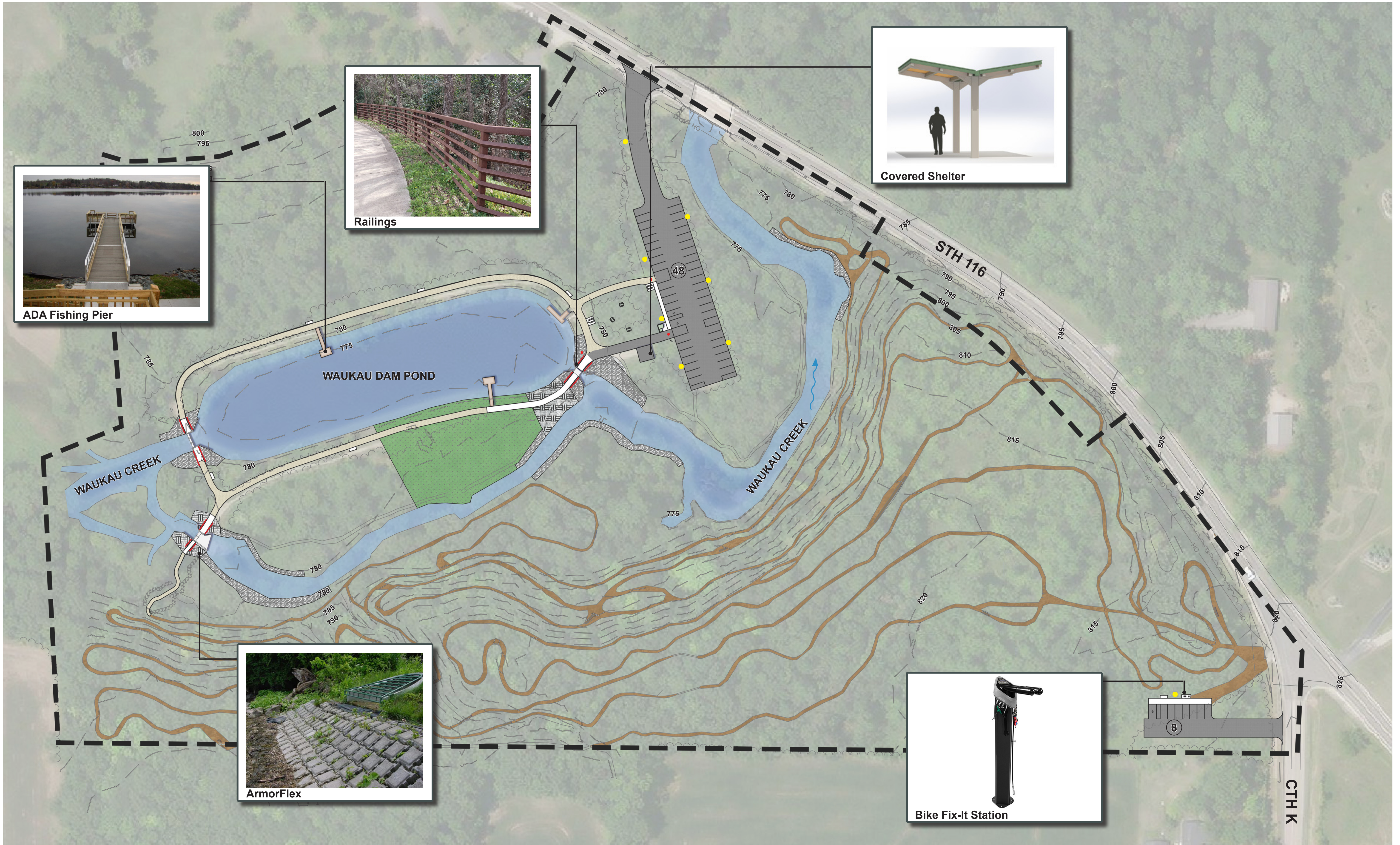
1. Upper Pond Dam Repairs - Repair fish deterrent; replace catwalk and railing; reinforce side slopes; clear and grub trees; pave approaches to dam and add railings along approach paths.
2. Lower Pond Dam Repairs - Adjust stop logs; replace existing railings; reinforce side slopes; pave approaches to dam and add railings along approach paths.
3. River Dam Repairs - Add armor flex mat alongside dam walls to prevent erosion; replace catwalk and railing; reinforce side slopes; clear and grub along dam; repair stone walls east of the dam; pave approaches to dam and add railings along approach paths.

# Waukau Dam

## Master Plan

Winnebago County, WI  
06.14.2022





ADA Fishing Pier



Railings



Covered Shelter



ArmorFlex

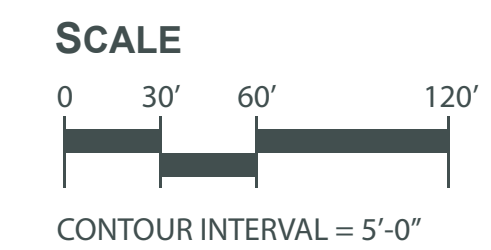


Bike Fix-It Station

# Waukau Dam

Character Images

Winnebago County, WI  
06.14.2022



**WAUKAU DAM MASTER PLAN  
ENGINEER'S ESTIMATE OF PROBABLE COSTS  
WINNEBAGO COUNTY, WISCONSIN  
JUNE 2022**

ITEM NO.	ITEM DESCRIPTION	ESTIMATED QUANTITY	UNITS	UNIT PRICE	TOTAL PRICE
<b>SITE</b>					
1.	Mobilization, Bonds, and Insurance	1	LS	\$ 100,000.00	\$ 100,000.00
2.	Erosion Control and Matting	1	LS	\$ 20,000.00	\$ 20,000.00
3.	Turf and Site Restoration	1	LS	\$ 15,000.00	\$ 15,000.00
4.	Unclassified Excavation	1	LS	\$ 30,000.00	\$ 30,000.00
5.	Clearing and Grubbing	1	LS	\$ 25,000.00	\$ 25,000.00
6.	Shoreline Armorment	2,300	SY	\$ 65.00	\$ 149,500.00
7.	Armoflex Matting	2,350	SF	\$ 30.00	\$ 70,500.00
8.	Reinforced Turf	21,750	SF	\$ 10.00	\$ 217,500.00
9.	Site Lighting	1	LS	\$ 25,000.00	\$ 25,000.00
10.	Concrete Sidewalk with Base	3,400	SF	\$ 10.00	\$ 34,000.00
11.	Asphaltic Concrete Pavement	625	TON	\$ 125.00	\$ 78,125.00
12.	Base Course	1,570	TON	\$ 20.00	\$ 31,400.00
13.	Pavement Markings	1	LS	\$ 5,000.00	\$ 5,000.00
14.	Gravel Paths	22,000	SF	\$ 3.50	\$ 77,000.00
15.	Shelter	1	LS	\$ 40,000.00	\$ 40,000.00
16.	Bench w/ Concrete Pad	6	EA	\$ 2,500.00	\$ 15,000.00
17.	Picnic Table	5	EA	\$ 1,500.00	\$ 7,500.00
18.	Removable Bollard	2	EA	\$ 1,500.00	\$ 3,000.00
19.	Signage (Park and Traffic)	1	LS	\$ 5,500.00	\$ 5,500.00
20.	Accessible Fishing Piers	2	EA	\$ 50,000.00	\$ 100,000.00
21.	Repair Existing Pier	1	LS	\$ 15,000.00	\$ 15,000.00
22.	Bike Fix-It Station	1	EA	\$ 4,500.00	\$ 4,500.00
23.	Kiosk	1	EA	\$ 3,000.00	\$ 3,000.00
<b>SUBTOTAL: Items #1 - #23</b>					<b>Subtotal = \$ 1,068,525.00</b>

<b>DAMS</b>					
24.	Upper Dam - Replace Catwalk/Rail System	1	LS	\$ 25,000.00	\$ 25,000.00
25.	Upper Dam - Add Pedestrian Rail on Approaches to Shield Dropoff	80	LF	\$ 300.00	\$ 24,000.00
26.	Upper Dam - Repair Fish Deterrent	1	LS	\$ 5,000.00	\$ 5,000.00
27.	Lower Dam - Replace Steel Rails	1	LS	\$ 8,000.00	\$ 8,000.00
28.	Lower Dam - Add Pedestrian Rail on Approaches to Shield Drop-Off	80	LF	\$ 300.00	\$ 24,000.00
29.	River Dam - Replace Catwalk/Rail System	1	LS	\$ 25,000.00	\$ 25,000.00
30.	River Dam - Add Pedestrian Rail on Approaches to Shield Drop-Off	80	LF	\$ 300.00	\$ 24,000.00
31.	River Dam - Add Armoflex Matting	1,300	SF	\$ 30.00	\$ 39,000.00
32.	River Dam - Repair Stone Walls	1	LS	\$ 7,500.00	\$ 7,500.00
<b>SUBTOTAL: Items #24- #32</b>					<b>Subtotal = \$ 181,500.00</b>

**Subtotal Bid= \$ 1,250,025.00**  
**20% Contingency = \$ 250,005.00**  
**Engineering= \$ 230,000.00**  
**Total Project Cost= \$ 1,730,030.00**

# Agenda Item Report



**Winnebago County**  
*The Wave of the Future*

DATE: December 20, 2022  
TO: Members of the Parks and Recreation Committee  
FROM: Parks Director  
RE: Sunnyview Exposition Center Tables and Chairs Budget Transfer

## **Background:**

The Sunnyview Expo Center was constructed in the early 1990's. Many shows are hosted annually with most returning year after year since it's inception. Throughout the year Sunnyview will host dog shows, gun shows, craft fairs, antique shows, weddings, Quinceaneras and many department trainings to name a few. Of the approximately 270 tables and 330 chairs utilized at the Expo, many are 20 years old, and are beginning to show their age. Some of the tables await parts for repairs and some are fixed with tape. The chairs are typically sturdier and last longer, but we don't have nearly enough for the number of tables.

20 tables with storage cart

119 stacking chairs

Shipping

Total: \$15,000.00

## **Justification:**

Replacing the current broken tables is a necessity to having the needed supply for our clients. Beginning to replace the older unstable tables with newer safer tables will position the Expo better to keep our current clients as well as to attract new events. When scheduling large events or multiple events simultaneously at the Expo there are not enough chairs to meet the demands. Purchasing more chairs will enable the rental fees to be kept in house versus clients relying on third party vendors to meet their supply needs. It only takes 25 rentals to get a return on a chair purchase, and 48 rentals to profit from a new table purchase. On average we have 2,318 tables and 4,426 chairs rented per year.

In 2022, the Sunnyview Exposition Center charged rent to the Winnebago County Health Department for the rental of the Sunnyview Exposition Center for COVID vaccine clinics and testing. The Parks Department would like to utilize this additional revenue to purchase these tables and chairs. The amount paid to the Parks Department in 2022 will be \$28,184. In 2023, the Winnebago County Health Department will continue to pay rent for use of the Sunnyview Exposition Center.

## **Requested Action:**

We are asking the committee to support the purchase of new tables and chairs for the Sunnyview Exposition Center from the County Contingency Fund.



**Attachments:**

- Estimates from suppliers
- Budget Transfer Form

