



Supervisor: Alana Erickson (CHS)



- Belinda DeGoey (PHN)
- Tracy Gehrke (PHN)
- Allison Laverty Montag (CHS)
- Jayne Tebon (PHN)
- Jennifer Zager (PHN)



- Lori Duclon (PHN)
- Joanne Murphy-Spice (CHS)
- Teresa Paulus (PHN)
- Erin Roberts (PHN)



- Marissa Meagher (CHS)
- Jenny Winninghoff (Coordinator)

The HLS has a unique make up of professionals that help us create health strategies that align focus on both the frog and the pond.



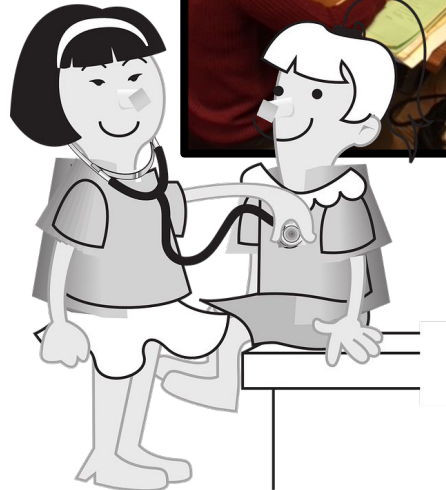
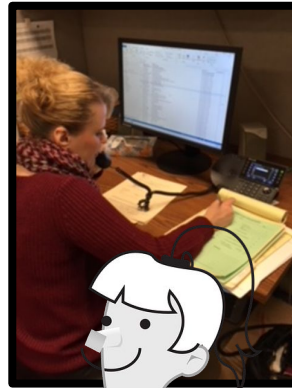
Frog =  
Helping the Individual

Pond =  
Policy/ Systems/ Environment



# Family Child Health (FCH)

- Prenatal Care Coordination (PNCC)
- New Mom /Infant Child
- Infant Safe Sleep
- Child Passenger Safety
- Breastfeeding
- Lead Inspections
- Immunizations



Health Promotion

- WIC—Women, Infants & Children
- Prenatal Care Coordination (PNCC)
  - Healthy pregnancies
  - Healthy babies
- Breastfeeding support
  - New moms
  - Community
  - Milk bank
- Injury Prevention
  - Infant safe sleep
  - Car seat safety
  - Crib safety
  - Suicide prevention
  - Teen safe driving
- re:THINK, our healthy living partnership, coordinates community efforts around:
  - Active Communities
  - Nutrition & Healthy Food Systems
  - Mental Health
  - Substance Use Disorders
  - Tobacco Prevention & Control

**re:THINK**  
Your Life. Your Choice.  
[WWW.RETHINKWINNEBAGO.ORG](http://WWW.RETHINKWINNEBAGO.ORG)

Prevent Promote Protect

Environmental Monitoring & Health Education

- Air Quality
- Lead Poisoning
- Radon
- Recreational Water & Wells (e.g., arsenic, Blue Green Algae)
- Vector borne disease
- Zoonotic Disease (e.g., rabies)

Preparedness

- Mass Casualty Plan
- Outbreaks
- Bioterrorism
- Pandemic Influenza
- Hazardous Chemical

Healthy Aging

- Falls Risk Screening
- Medication Management Help
- Nursing Visits & Resource Guidance
- Classes
  - Healthy Living with Diabetes
  - Living Well with Chronic Conditions
  - Powerful Tools for Caregivers
  - Stepping On
  - Strong Bones

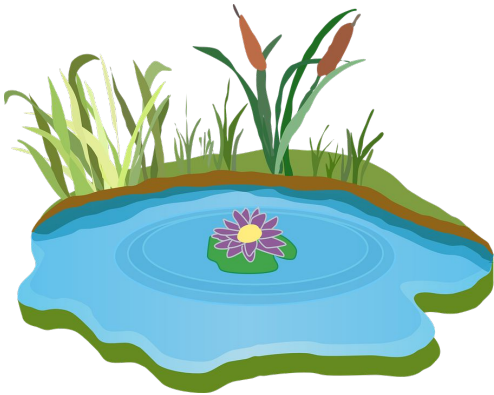
Healthcare Connection

- Dental Resources
- Health Insurance
- Women's Cancer Screenings

# Family Child Health (FCH)

- Epidemiology (data collection and sharing): [WC State of the Child](#)
- Public Policy (patient advocacy, educating stakeholders,
- Regional / State / National Collaboration:

- [First Five Fox Valley](#)
- Safe Kids NE Wisconsin
- Maternal Child Health - DHS Learning Communities
- Child Death Review Team
- Wisconsin Alliance for Lactation and Breastfeeding Consultants



A Letter to Fox Valley Policy makers and County Executives - February 2022

**Earmark 10% of all ARPA funds into a Thrive Communities: Early Childhood Investment Fund**

**Appleton**

**Outagamie**

**Shawano**

**Winnebago**

**Calumet**

**American Recovery Funds can help grow our local economy.** We know the Fox Valley prospers when all children are healthy, valued and thriving. In order to provide children with an equal start in life, strengthen our economy in a way that also reduces racial, gender and income inequality in our communities, and meet the needs of working parents, it is time to support a robust vision to make the high-impact investment in children's readiness for school, work and life. Thriving communities depend on the well-being of all members. By providing families with equitable access to the early child development resources they need, we ensure all enjoy more vibrant years ahead. **The need is urgent. The time for action is now!**

What is 10% of your County or Communities ARPA Funds? Check out this table!



# Promoting Healthy Aging (PHA)

- Home Visits
  - Safety net for those that have no options: Med Set up / Transition Home/ Fall Risk /Education / Doctor Appts/ Environmental Scans (APS Referrals)
  - Provide 40 Hours a week of coordinated nursing services to the 7 locations of Winnebago County Housing Authority
- Advisory on Communicable Disease Mitigation Measures
  - Long term care facilities, nursing agencies, congregate settings
- Case Management (Telehealth)
  - Many older adults can benefit from a call/ check in/ help understanding their latest instructions



# Promoting Healthy Aging (PHA)

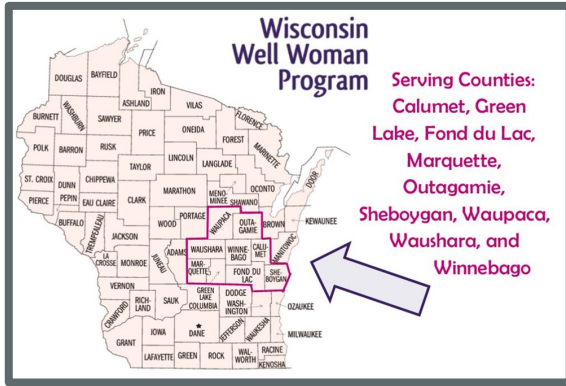
- Falls Prevention
  - Classes / Home Improvements / Kits
  - [Finding Balance Together](#) | e.g.: Falls Referral App
- Wellness Plus: [bit.ly/WCWellness Plus](https://bit.ly/WCWellnessPlus)
- Transportation
- Social Connectedness
- Health Literacy / Technology
- Committees and Coalitions on Aging:
  - ADRC, Each Municipal Committee on Aging, Finding Balance, RTAC, Livable Communities, WC Healthy Aging Plan



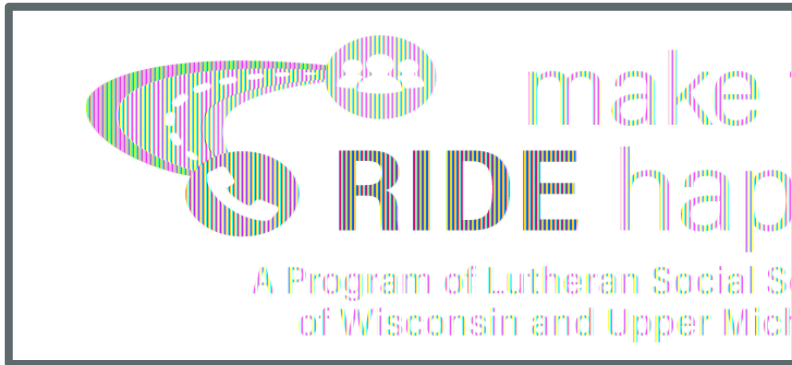
**SOME OF THE BENEFITS TO BEING A CLASS LEADER..**



# Access to Healthcare



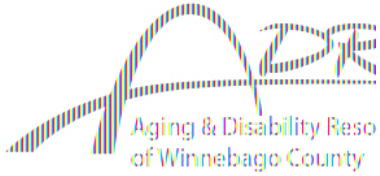
- Direct Program Enrollment
- Referrals
- Promotion of Partner Services
- Health Literacy
- Health Insurance Enrollment
- Identifying barriers: language, funding, geography, distrust



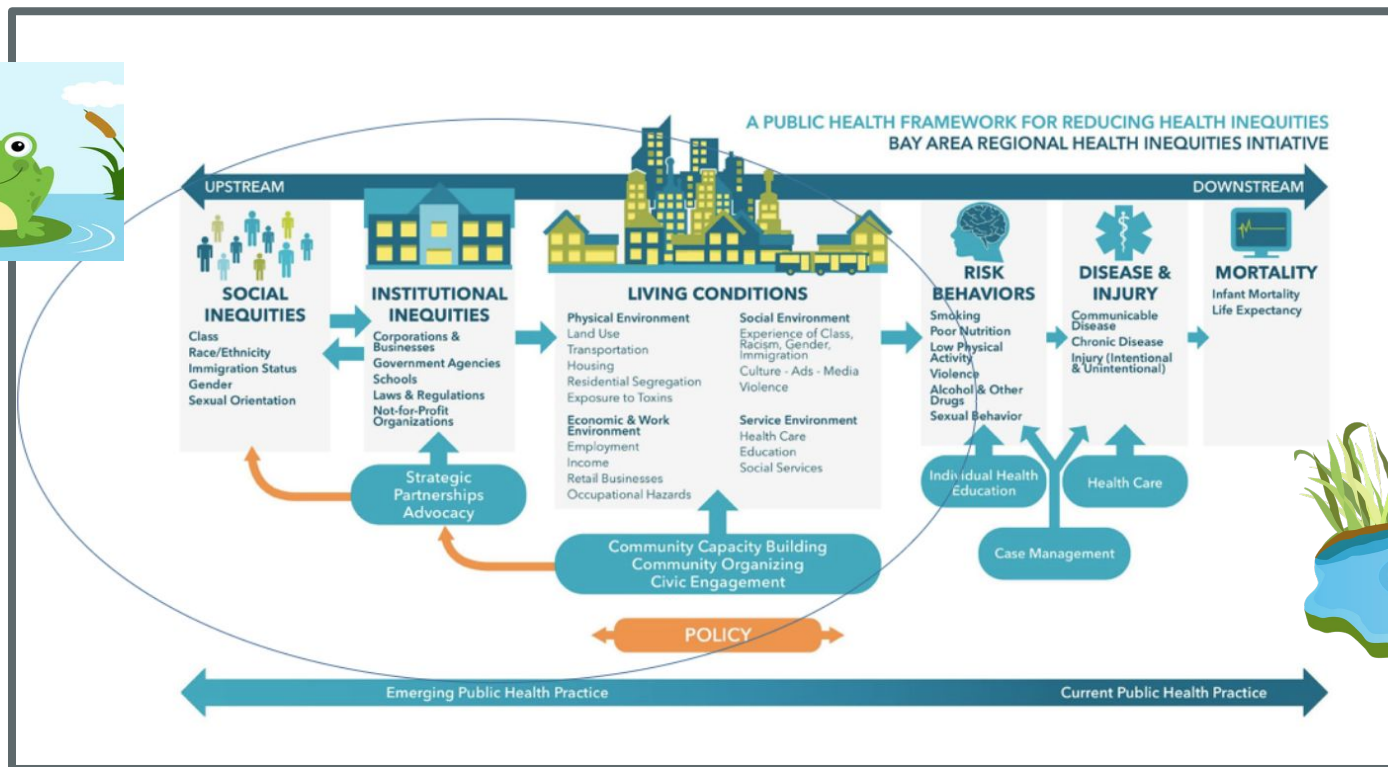
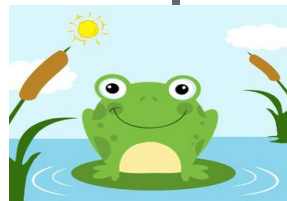
Insert QI ACCESS Database summary for WWWP  
Marissa / Jenny / Heidi



# Access to Healthcare



# BARHII FRAMEWORK



# Common Referrals



If someone calls asking "can I speak with a nurse?" - please help triage to the most appropriate resources on our FCH Team

Always confirm that they have a Winnebago Cty Address (refer to appropriate jurisdiction; e.g., City of Menasha) before processing referral

	1st	2nd	
Access to Healthcare:	Human Services	Marissa (northern) Alana (southern)	
Back to School Fair:	Tracy	Belinda	
Breastfeeding:	Allison	Billie	
Car Seats:	Belinda	Tracy	Erin
Child care regarding health:	Tracy	Anne (EH if it's an environmental issue)	
Complaint/Community Concern:	Alana		
Lead- regarding child's health:	Jayne	EH supports environmental needs	
New/Potential Partners	Alana	Allison	
Older Adult Medical Needs/ Fall Risk	Erin	Lori	
PNCC/Prenatal/Post Partum:	Belinda	Allison	
Vaccination:	Jennifer	Jayne	(Front staff procedure for scheduling appts)
Wellness Plus Classes	Joanne	Erin	
Weight Check:	Tracy	Belinda	
WIC:	Kim	Belinda	

# Collaborate at our Team Meetings:

Healthy Lifespan Meeting Calendar					
	Monday	Tuesday	Wednesday	Thursday	Friday
Week 1	Lori - HA Belinda WIC	Lori - HA <b>PHA 10-Noon</b>	<u>Leadership 8-10am</u> Teresa HA F5FV 12-1:30 <b>WWWP 1-2</b> Belinda WIC Alana Neenah	Teresa - HA	Lori - HA JW - Off Belinda WIC
Week 2	Lori - HA <u>Nurses Mtg 1-2</u> ALM - 2-3 <b>ADRC Board Mtg 3-4:30pm</b>	Lori - HA <b>Parent Resource Hours- CAB (1-4)</b> <b>Policy Team 1-3</b>	<u>Leadership 8-10am</u> Staff - WCHD? Belinda WIC Teresa - HA	Teresa - HA Telehealth/Data base (BD, AE) 2-3	Meslissa/Alana - 1-2pm Teresa - HA Belinda WIC JW - Off
Week 3	Lori - HA Belinda WIC	Lori - HA <b>CDRT Mtg 12-2 (BD, ER, TP, JG)</b>	<u>Supervisor Mtg 8-10am</u> Teresa HA F5FV 12-1:30 <b>WWWP 1-2</b> Belinda WIC Alana Neenah	Teresa - HA <b>HLS Mtg 2-3:30   Notes</b> AE Drop in Office Hours Noon-4:30	Board of Health 7:30-9 Melissa/Alana - 1-2pm Lori - HA JW - Off Belinda WIC
Week 4	Lori - HA	<b>All Staff Meeting (8-10)</b> <b>Family Child Health 1-3 PM</b> Lori HA	<u>Leadership 8-10am</u> Teresa - HA Belinda WIC	Teresa - HA Telehealth/Data base (BD, AE) 2-3 Parent Resource Hours- Noonah	Teresa - HA Belinda WIC JW - Off



# We get by with a little help from our friends

If COVID taught us anything it was that we are stronger together. Our varied professions and skillsets helped support the COVID response through direct services, strategy and administration.

With **over 190** combined years of service to WCHD the HLS Division is an invaluable resource to keep WCHD going and improving through staff's experience and knowledge.



“For he who has health has hope; and he who has hope, has everything.” - Owen Arthur



# Referrals

When in doubt, call!

Phone Number: 920-232-3000

OR

Email: [health@co.winnebago.wi.us](mailto:health@co.winnebago.wi.us)

