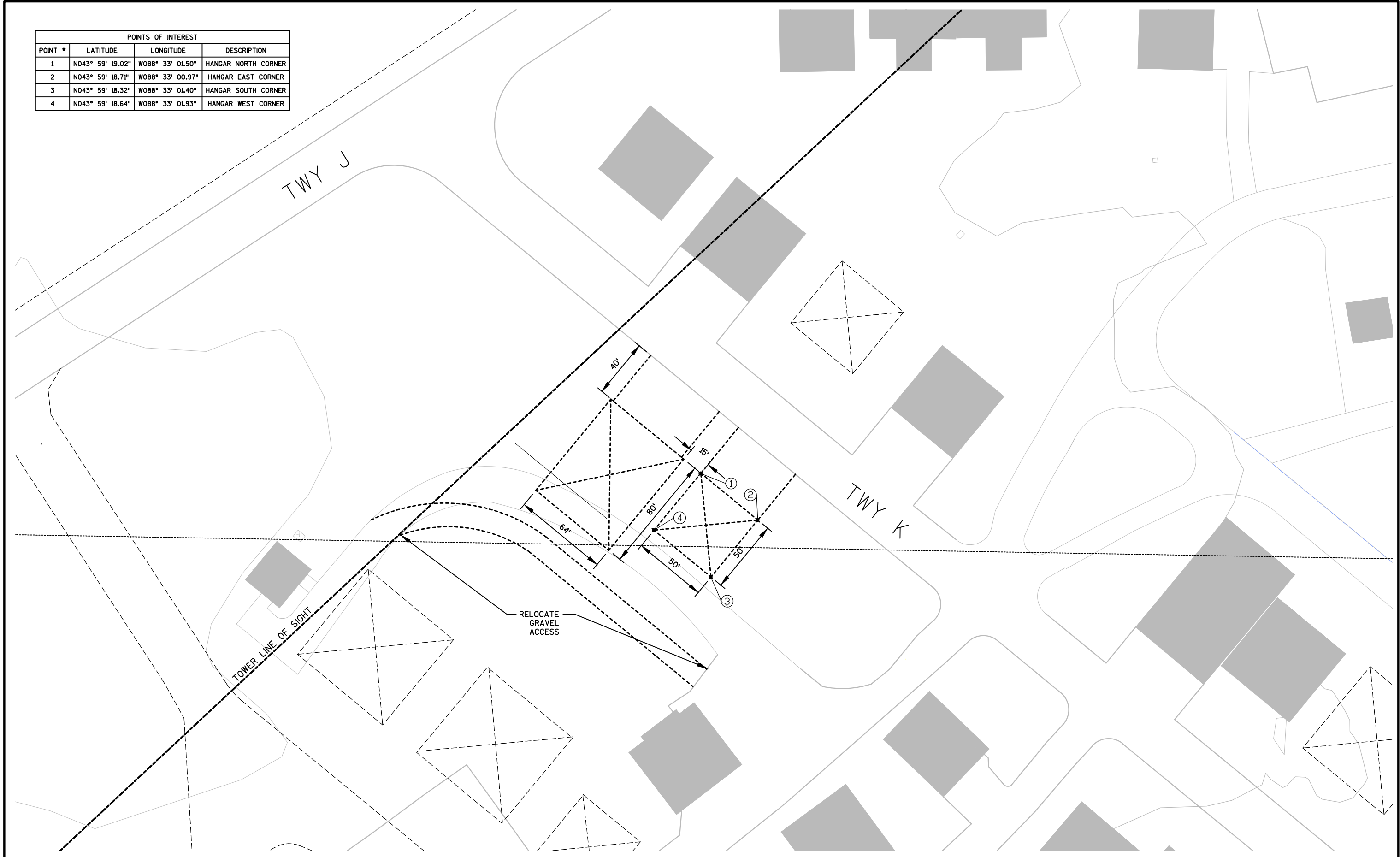


POINTS OF INTEREST			
POINT #	LATITUDE	LONGITUDE	DESCRIPTION
1	N043° 59' 19.02"	W088° 33' 01.50"	HANGAR NORTH CORNER
2	N043° 59' 18.71"	W088° 33' 00.97"	HANGAR EAST CORNER
3	N043° 59' 18.32"	W088° 33' 01.40"	HANGAR SOUTH CORNER
4	N043° 59' 18.64"	W088° 33' 01.93"	HANGAR WEST CORNER



STATE PROJECT NO: XXXX-XX-XX | WITTMAN REGIONAL AIRPORT | COUNTY: WINNEBAGO | TAXIWAY K - W/UTILITIES | SCALE, FEET | SHEET **E**

FILE NAME : F:\TR\AIRPORTS\OSH\HANGARS\2018\OSH ALP-ULT HNGR AREA W UTILITIES_LATS AND LONGS.DWG | PLOT DATE : 1/25/2018 9:23 AM | PLOT BY : MARK FUERST | PLOT NAME : | PLOT SCALE :

LAYOUT NAME - **** | F:\TR\AIRPORTS\OSH\Hangars\2018\OSH ALP-ULT HNGR AREA W UTILITIES_lats and longs.dwg, OSH NE DISPLAY (LATS LONGS), 1/25/2018 9:23:20 AM | WISDOT/CADDS SHEET 44