

## Airport Fire Station – Station 14



From Knapp St – looking East



From Airfield – looking West

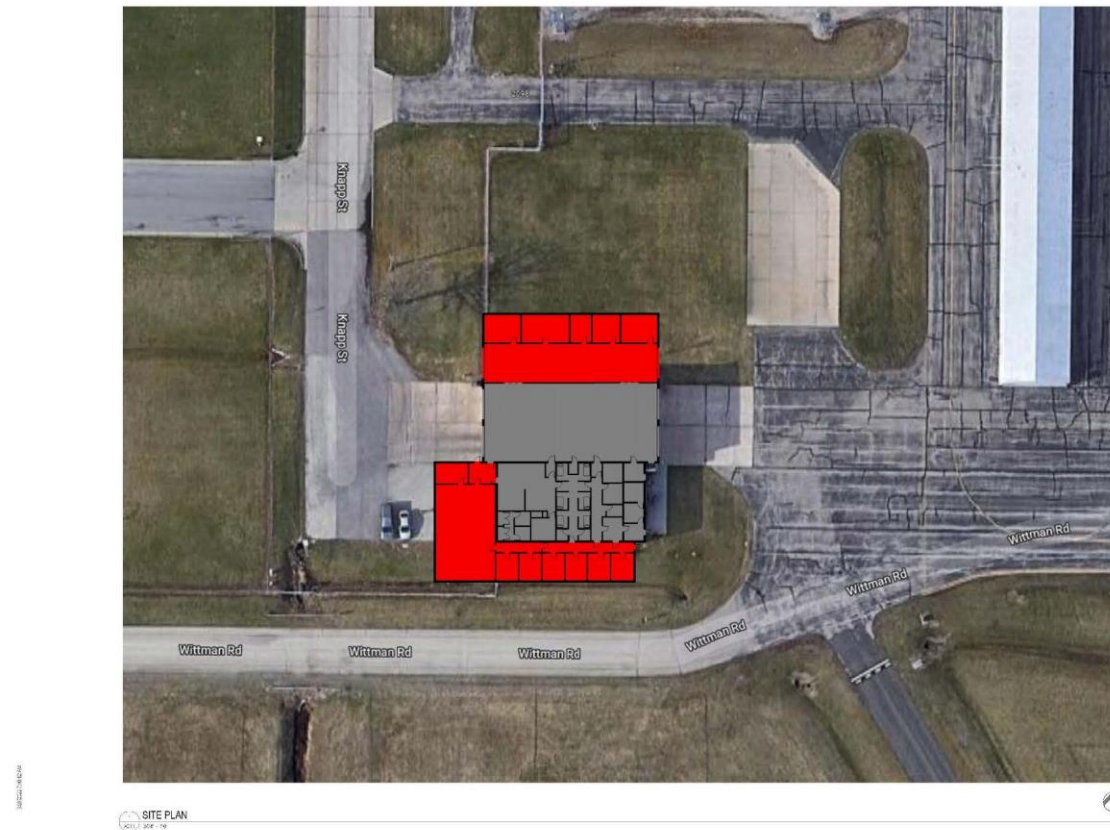
## Station 14 Location





## Fire Station Replacement – expanded footprint

**Figure 14-10 – Expanded Station on Existing Site**



NOT FOR  
CONSTRUCTION

WINNEBAGO COUNTY - WITTMAN REGIONAL AIRPORT  
FIRE STATION 14  
2000 KIMPP STREET  
OSHKOSH, WI

The development of a new drug is a costly and time-consuming process. It takes an average of 12 years to bring a new drug to market, and the cost of development can be as high as \$1 billion. The pharmaceutical industry is a highly competitive market, and the success of a new drug depends on its ability to meet the needs of the market. The pharmaceutical industry is a highly competitive market, and the success of a new drug depends on its ability to meet the needs of the market.

REVISION SCHEDULE		
REV. #	DESCRIPTION	DATE

SITE PLAN - ADDITION / RENOVATION

A011

## Aircraft Rescue & Fire Fighting (ARFF) Truck Replacement



1986 – Oshkosh T-1500 (existing)



Example of a new Oshkosh Striker