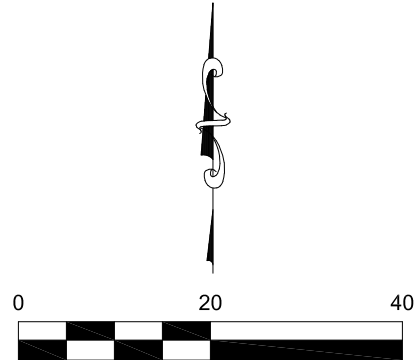
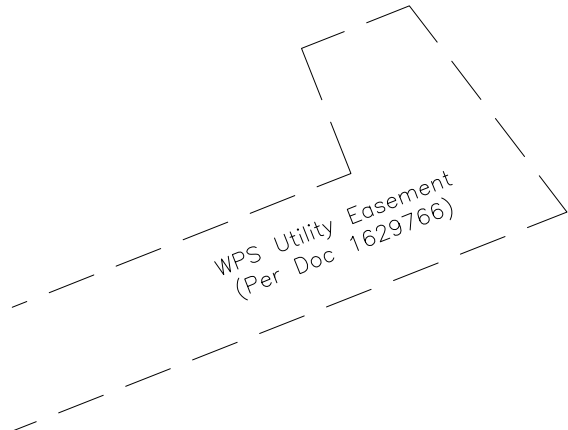
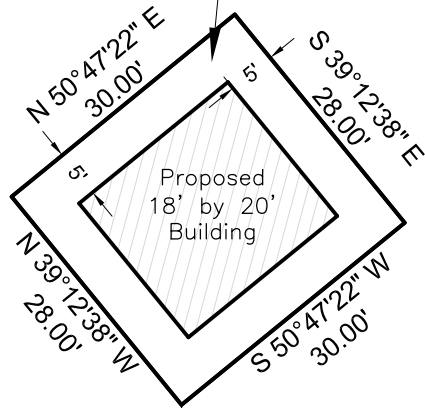


Lease Area Exhibit

Part of the Northwest 1/4 of the Southeast 1/4,
 Section 36, Township 19 North, Range 16 East,
 City of Oshkosh, Winnebago County Wisconsin

LEASE AREA

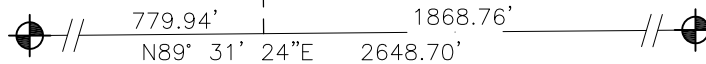
0,840 SF
 0.0193 ac



Bearings are referenced to the South line of the Southeast 1/4, Section 36, T19N, R16E, assumed to bear N89°31'24"E, base on the Winnebago County Coordinate System.

South 1/4 Corner
 Section 36, T19N, R16E
 (Masonry Nail)

Southeast Corner
 Section 36, T19N, R16E
 (County Monument)



**Davel Engineering &
 Environmental, Inc.**

Civil Engineers and
 Land Surveyors
 1811 Racine Street
 Menasha, Wisconsin
 Ph. 920-991-1866, Fax 920-830-9595

File: 5323Ease.dwg
 Date: 04/04/2018
 Drafted By: jim
 Sheet: Exhibit