

# The Recycling Supply Chain

Manufacturer makes new recycled content jug for milk



Consumer buys a jug of milk



Empty jug goes in recycle bin at curb



MRF sells jug to plastics manufacturer. Sales off-set cost of processing

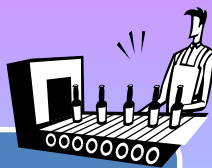


\$7/ton recycling fee charged at landfills funds financial assistance to local government



Local gov. coordinates collection of empty jug

Empty jug is taken to sorting facility (MRF)



State provides local gov. financial assistance to off-set cost of service



Cost of collection is borne by local gov. and residents