

Winnebago County
Department of Human Services
220 Washington Avenue
PO Box 2187
Oshkosh, WI 54903-2187
(920) 236-4600
Fax: (920) 424-7521
E-mail: dhs@co.winnebago.wi.us

Neenah Branch Office:
211 N. Commercial Street
Neenah, WI 54956
(920) 729-2750
Fax: (920) 729-2790

Workforce Development Center
315 Algoma Boulevard
Oshkosh, WI 54901
(920) 232-6200
Fax: (920) 303-3161

Winnebago County is an equal opportunity service provider. Assistance is available to access services or material in an alternate format.

Our agency has a web site!

<http://www.co.winnebago.wi.us/humanservices/index.asp>

Winnebago Co Dept of Human Services

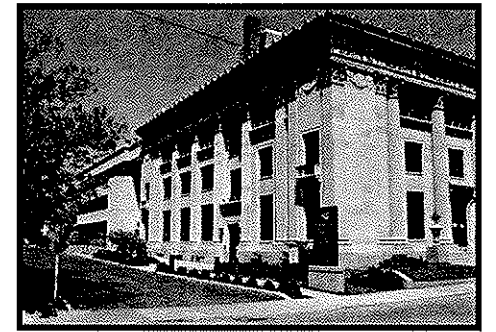
PO Box 2187

Oshkosh WI 54903-2187

Winnebago County

Department
of
Human Services

Services
Directory



To report abuse/neglect
Contact the Winnebago County
Dept. of Human Services
Access Intake Office:
For children: (920) 236-4615
or (920) 727-2882, ext. 4615
For adults: (877)-886-2672
After hours: Dial 911

The following are brief explanations of services available to the residents of Winnebago County:

Aging & Disability Resource Center

The ADRC is a resource center for seniors and adults with disabilities. It provides information & assistance, Long term care options counseling, benefits counseling, prevention and early intervention, short-term care management, and access to Family Care benefits. Services provided through grant agreements include home-delivered and group meal sites, volunteer services, specialized transportation, health screening, Senior Center staff, peer counseling, prevention and wellness services.

For info call: (877) 886-2372

Substance Abuse Services Assessment Services

Counselors assess, refer, authorize, and case manage individuals in need of alcohol and/or other drug treatment services, including AODA, OWI, Drug Court, Safe Streets Treatment Option Program (SSTOP), the Misdemeanor Drug Diversion Program (MDDP), and the Juvenile Treatment Court program. *For info call: (920) 236-4734 or (920) 727-2881, ext. 4734*

Birth-to-Three Program

Staff provides developmental screening and completes intake for any child under three years old who has a disability or is suspected of having a delay in development. Services are provided to eligible children through contract with Early Intervention Services, an agency of Goodwill Industries of Northeast WI.

For info call: (920) 236-4803 or (920) 727-2881, ext. 4803. For referrals call: (920) 236-4615 or (920) 727-2882, Ext. 4615

Child Welfare Services

Services to children, youth and families are based on circumstances and needs. Services are family focused and include Juvenile Intake determinations, child abuse/neglect investigation and Kinship Care assessments, court studies and family assessments, case management, and placement opportunities for children and youth in foster homes, group homes, Residential Care Centers, and correctional facilities throughout the State. Contract providers also provide family-focused services for those children who are court ordered into treatment due to abuse, neglect or delinquent behavior. *For info call: (920) 236-4615 or (920) 727-2882, ext. 4615*

Crisis Services

(24-hour information, referral, brief counseling, mobile crisis response and residential stabilization services)

Staff provides services to walk-ins to our clinic during business hours; assesses all Ch. 51 emergency detentions at local hospitals, provides mental health services to the county jail, provides transportation between treatment facilities as necessary, operates the county's eight (8) bed adult hospital diversion crisis center and the 24-hr. Crisis Intervention/Helpline phone service. *For info call: (920) 236-4700 or (920) 727-2881; 24-Hour Crisis Helpline: (920) 233-7707 or (920) 722-7707*

Community Support Program (CSP), Comprehensive Community Services (CCS) and Case Management Team Services

Services include psychiatric evaluation, medication prescription and monitoring, supportive counseling, symptom management and supportive psychotherapy, assistance with activities of daily living, vocational assessment and support, crisis management, psychosocial rehab to help with daily living skills, vocational involvement, and community integration. Residential Services also available.

For info call: (920) 236-4700 or (920) 727-2881

Adult Protective Services

These services are within the ADRC. Services include adults-at-risk and elder abuse investigations/interventions; working with individuals, community resources and the county in coordinating other adult protective services; reporting and interventions, including guardianships. Adult protective placement reviews are completed annually.

For info call: (877) 886-2372

Family Support Services

Staff provides service coordination, support, funding and links to resources for families who have children ages birth to 18 who meet eligibility for needing long term care. Eligible persons typically have a physical, developmental or emotional disability that severely affects their ability to function independently at home, school and in the community. Young adults (aged 18-22) who are not eligible for long term care may be served through this service.

For info call: (920) 236-4615 or (920) 727-2882, ext. 4615

Economic Support Services

Services include Food Share; Medicaid programs for disabled individuals, people over age 65, pregnant women, children and their parents, (Badger Care), or nursing home residents; Family Planning Medicaid; childcare assistance; energy assistance; emergency assistance for families with children; employment programs (for recipients of Wisconsin Works and Food Share); refugee assistance; Wisconsin Works (W-2); Job Access Loans; payments for children of SSI parents; and fraud prevention.

For info call: (920) 232-6246, (920) 729-2770 or (920) 236-4697 (Elderly/ Disabled)

Mental Health Counseling Services

Staff works with indigent or working poor people with no or very limited insurance, or who only have Medical Assistance (MA). Services provided include same or next day intake/evaluation services through our walk-in clinic, brief counseling and psychotherapy, longer term supportive psychotherapy for people with persisting problems, medication prescription and management, and ongoing limited case management for those in need. Services are available to children, adolescents and adults.

For info call: (920) 236-4700 or (920) 727-2881

Prevention Services

Staff coordinates collaborative programming that decreases the likelihood of specific problems for the participants in the area of AODA, child abuse and neglect, etc. OPTION Program (Juvenile & underage alcohol diversion program) available to first time offenders.

For info call: (920) 236-4820 or (920) 727-2881, ext. 4820

Our mission:

"To serve the citizens of Winnebago County with professional, quality and cost-effective services that focus on prevention, protection, mental health, family integration, self-determination and recovery with respect for and in partnership with individuals, families, caregivers and the community."

Our vision:

"To be a leader in Human Services by fostering healthy, self-reliant and productive individuals and families."