

EASEMENT EXHIBIT

PARTS OF THE NE 1/4 OF SECTION 34, AND THE NE 1/4 & NW 1/4 OF SECTION 35, TOWNSHIP 18 NORTH, RANGE 16 EAST, CITY OF OSHKOSH, WINNEBAGO COUNTY, WISCONSIN

AECOM
 200 N. KANAWHA ST., SUITE 200
 OSHKOSH, WI 54901
 PROJ. NO. 60336822
 SHEET 1 OF 3
 MAY 2015



SEE SHEET 2 OF 3 FOR CONTINUATION



NORTH IS REFERENCED TO THE WINNEBAGO COUNTY COORDINATE SYSTEM, NAD83-91.

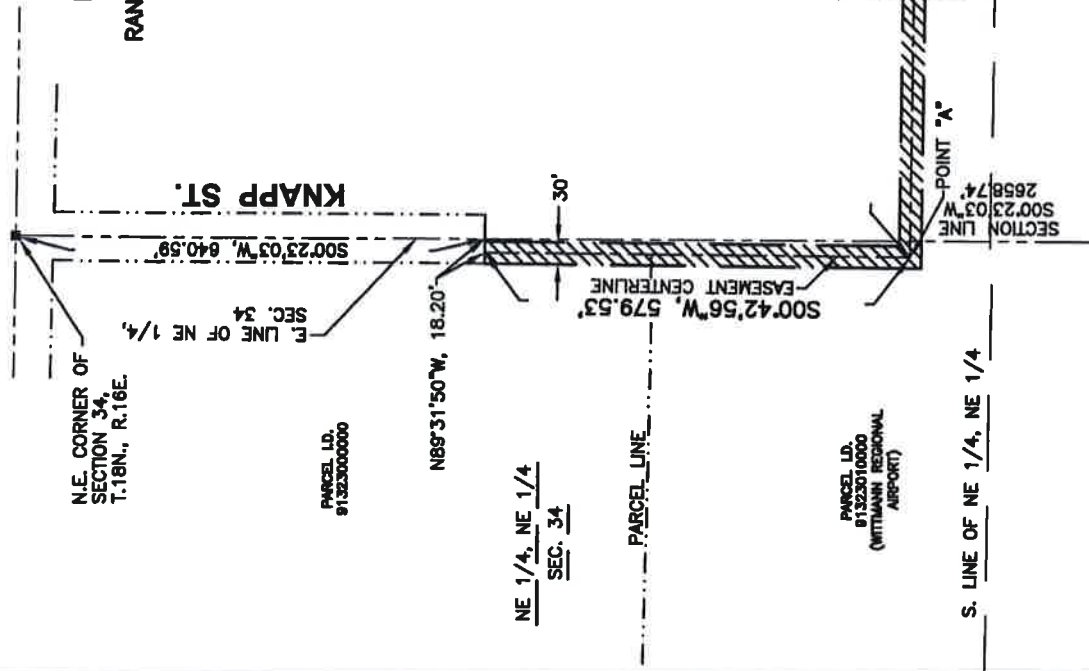


NW 1/4, NW 1/4
 SEC. 35

NE 1/4, NW 1/4
 SEC. 35

PARCEL I.D.
 91413530000
 (WITTMANN REGIONAL AIRPORT)

PARCEL I.D.
 91413530000



NE. CORNER OF SECTION 34, T.18N., R.16E.

KNAPP ST.

PARCEL I.D.
 91323000000

NE 1/4, NE 1/4
 SEC. 34

N89°31'50"W, 18.20'

30'

S00°42'56"W, 579.53'

EASEMENT CENTERLINE

PARCEL I.D.
 91323010000
 (WITTMANN REGIONAL AIRPORT)

S. LINE OF NE 1/4, NE 1/4

PERMANENT EASEMENT LIMITS

EASEMENT CENTERLINE
 S89°24'25"E, 3016.66'
 (POINTS "A" TO "B")

POINT "A"

SECTION LINE
 S00°23'03"W, 2658.74'

S. LINE OF NW 1/4, NW 1/4

S. LINE OF NE 1/4, NW 1/4

E. LINE OF NW 1/4, NW 1/4

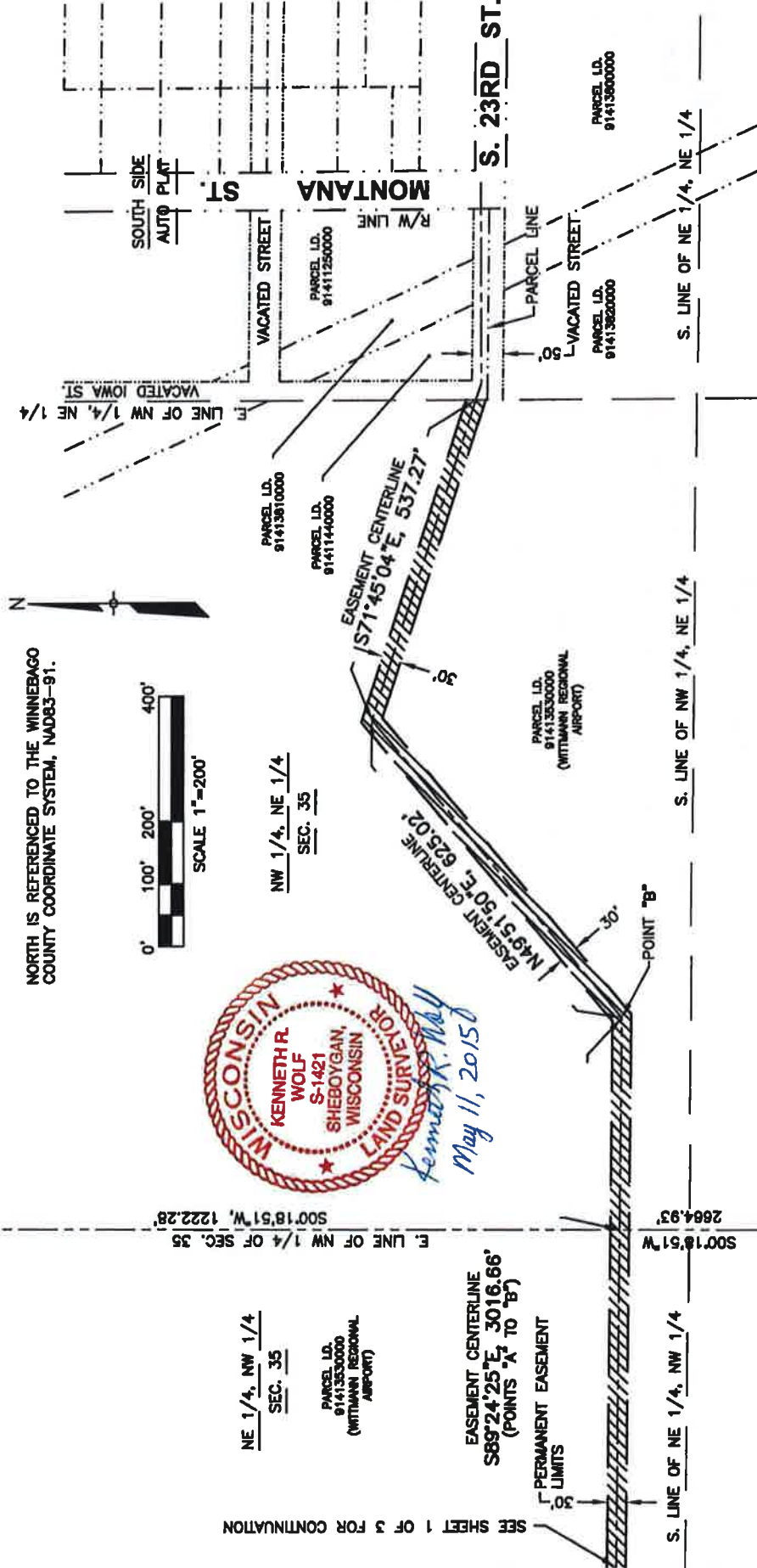
EASEMENT EXHIBIT

AECOM
 600 N. WEST ST.
 OSHKOSH, WI 54901
 PROJ. NO. 60339822
 SHEET 2 OF 3
 MAY, 2015

PARTS OF THE NE 1/4 OF SECTION 34, AND THE NE 1/4 &
 NW 1/4 OF SECTION 35, TOWNSHIP 18 NORTH,
 RANGE 16 EAST, CITY OF OSHKOSH, WINNEBAGO COUNTY, WISCONSIN

N. 1/4 CORNER
 OF SECTION 35,
 T.18N., R.16E.

NORTH IS REFERENCED TO THE WINNEBAGO
 COUNTY COORDINATE SYSTEM, NAD83-91.



WISCONSIN
 KENNETH R. WOLF
 S-1421
 SHEBOYGAN,
 WISCONSIN
 LAND SURVEYOR
Kenneth R. Wolf
 May 11, 2015

SEE SHEET 1 OF 3 FOR CONTINUATION

NE 1/4, NW 1/4
 SEC. 35
 PARCEL I.D.
 91413530000
 (WITTMAN REGIONAL
 AIRPORT)

EASEMENT CENTERLINE
 S89°24'25" E, 3016.66'
 (POINTS 'A' TO 'B')

PERMANENT EASEMENT
 LIMITS

S. LINE OF NE 1/4, NW 1/4

500'18'51"W

S. LINE OF NW 1/4, NE 1/4

S. LINE OF NE 1/4, NE 1/4

500'18'51"W, 1222.28'

NW 1/4, NE 1/4
 SEC. 35

EASEMENT CENTERLINE
 N49°31'50" E, 625.02'

EASEMENT CENTERLINE
 S71°45'04" E, 537.27'

PARCEL I.D.
 91413530000
 (WITTMAN REGIONAL
 AIRPORT)

PARCEL I.D.
 91413600000

PARCEL I.D.
 91413620000

MONTANA

S. 23RD ST.

SOUTH SIDE
 AUTO PLAT

VACATED STREET

VACATED STREET

VACATED IOWA ST.



EASEMENT EXHIBIT

PARTS OF THE NE 1/4 OF SECTION 34, AND THE NE 1/4 &
NW 1/4 OF SECTION 35, TOWNSHIP 18 NORTH,
RANGE 16 EAST, CITY OF OSHKOSH, WINNEBAGO COUNTY, WISCONSIN

LEGAL DESCRIPTION

A strip of land, 30 feet in width, being a part of the NE 1/4 of the NE 1/4 of Section 34 and part of the NW 1/4 of the NE 1/4, the NE 1/4 of the NW 1/4, and the NW 1/4 of the NW 1/4 of Section 35, Township 18 North, Range 16 East, City of Oshkosh, Winnebago County, Wisconsin, the centerline of said 30-foot wide strip being described as:

Commencing at the Northeast corner of said Section 34;
thence S00°-23'-03"W, along the east line of the NE 1/4 of said Section 34, 640.59 feet;
thence N89°-31'-50"W, 18.20 feet to the Point of beginning of said easement centerline;
thence S00°-42'-56"W, 579.53 feet;
thence S89°-24'-25"E, 3016.66 feet;
thence N49°-51'-50"E, 625.02 feet;
thence S71°-45'-04"E, 537.27 feet to the east line of the NW 1/4 of the NE 1/4 of said Section 35, said point also being on the west line of vacated Iowa Street, as shown on the South Side Auto Plat, said point also being the end of this easement centerline.



Kenneth R. Wolf
May 11, 2015

