

EASEMENT EXHIBIT

PARTS OF THE NE 1/4 OF SECTION 34, AND THE NE 1/4 & NW 1/4 OF SECTION 35, TOWNSHIP 18 NORTH, RANGE 16 EAST, CITY OF OSHKOSH, WINNEBAGO COUNTY, WISCONSIN

AECOM
 200 N. KANAWHA ST., SUITE 200
 OSHKOSH, WI 54901
 PROJ. NO. 60336822

SHEET 1 OF 3
 MAY 2015



Kenneth R. Wolf
 May 11, 2015

SEE SHEET 2 OF 3 FOR CONTINUATION



NORTH IS REFERENCED TO THE WINNEBAGO COUNTY COORDINATE SYSTEM, NAD83-91.



SCALE 1"=200'

NW 1/4, NW 1/4
 SEC. 35

NE 1/4, NW 1/4
 SEC. 35

PARCEL I.D.
 91413530000
 (WITTMANN REGIONAL AIRPORT)

PARCEL I.D.
 91413530000

N.E. CORNER OF SECTION 34, T.18N., R.16E.

KNAPP ST.

EASEMENT CENTERLINE
 S00°23'03"W, 640.59'

PARCEL I.D.
 91323000000

N89°31'50"W, 18.20'

NE 1/4, NE 1/4
 SEC. 34

PARCEL LINE

EASEMENT CENTERLINE
 S00°42'56"W, 579.53'

PARCEL I.D.
 91323010000
 (WITTMANN REGIONAL AIRPORT)

SECTION LINE
 S00°23'03"W, 2658.74'

POINT "A"

PERMANENT EASEMENT LIMITS

EASEMENT CENTERLINE
 S89°24'25"E, 3016.66'
 (POINTS "A" TO "B")

S. LINE OF NW 1/4, NW 1/4

S. LINE OF NE 1/4, NE 1/4

S. LINE OF NE 1/4, NW 1/4

E. LINE OF NW 1/4, NW 1/4

EASEMENT EXHIBIT

PARTS OF THE NE 1/4 OF SECTION 34, AND THE NE 1/4 & NW 1/4 OF SECTION 35, TOWNSHIP 18 NORTH, RANGE 16 EAST, CITY OF OSHKOSH, WINNEBAGO COUNTY, WISCONSIN

N. 1/4 CORNER OF SECTION 35, T.18N., R.16E.

SEE SHEET 1 OF 3 FOR CONTINUATION

NE 1/4, NW 1/4 SEC. 35

PARCEL I.D. 9141330000 (WITTMANN REGIONAL AIRPORT)

EASEMENT CENTERLINE S89°24'25"E, 3016.66' (POINTS 'A' TO 'B')

PERMANENT EASEMENT LIMITS

S. LINE OF NE 1/4, NW 1/4

E. LINE OF NW 1/4 OF SEC. 35 500'18.51"W, 1222.28'

2864.93'



Kenneth R. Wolf
May 11, 2015

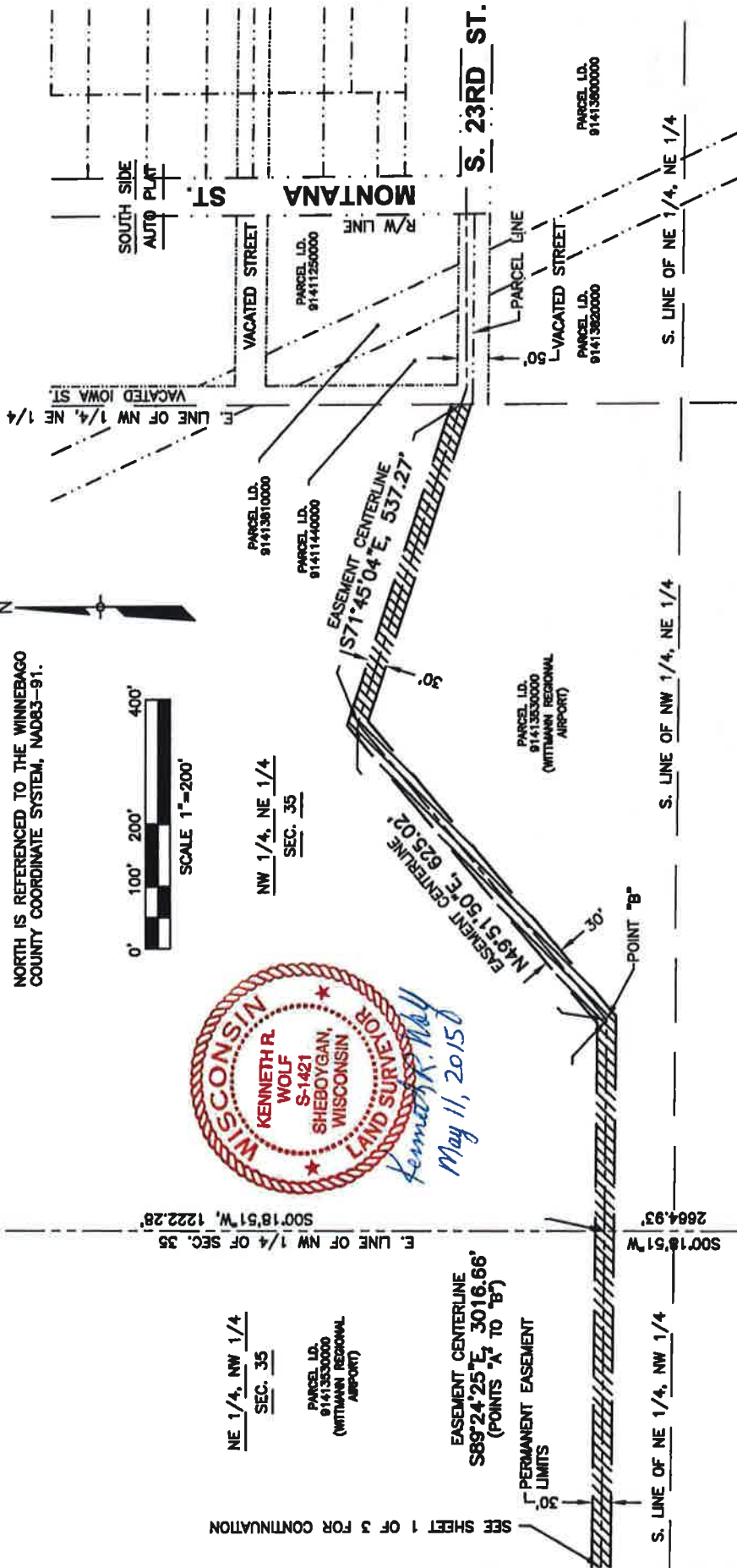


NORTH IS REFERENCED TO THE WINNEBAGO COUNTY COORDINATE SYSTEM, NAD83-91.



SCALE 1"=200'

NW 1/4, NE 1/4 SEC. 35



AECOM

500 N. WEST ST.
OSHKOSH, WI 54901
PROJ. NO. 60339822
SHEET 2 OF 3
MAY, 2015

EASEMENT EXHIBIT

PARTS OF THE NE 1/4 OF SECTION 34, AND THE NE 1/4 &
NW 1/4 OF SECTION 35, TOWNSHIP 18 NORTH,
RANGE 16 EAST, CITY OF OSHKOSH, WINNEBAGO COUNTY, WISCONSIN

LEGAL DESCRIPTION

A strip of land, 30 feet in width, being a part of the NE 1/4 of the NE 1/4 of Section 34 and part of the NW 1/4 of the NE 1/4, the NE 1/4 of the NW 1/4, and the NW 1/4 of the NW 1/4 of Section 35, Township 18 North, Range 16 East, City of Oshkosh, Winnebago County, Wisconsin, the centerline of said 30-foot wide strip being described as:

Commencing at the Northeast corner of said Section 34;
thence S00°-23'-03"W, along the east line of the NE 1/4 of said Section 34, 640.59 feet;
thence N89°-31'-50"W, 18.20 feet to the Point of beginning of said easement centerline;
thence S00°-42'-56"W, 579.53 feet;
thence S89°-24'-25"E, 3016.66 feet;
thence N49°-51'-50"E, 625.02 feet;
thence S71°-45'-04"E, 537.27 feet to the east line of the NW 1/4 of the NE 1/4 of said Section 35, said point also being on the west line of vacated Iowa Street, as shown on the South Side Auto Plat, said point also being the end of this easement centerline.



Kenneth R. Wolf
May 11, 2015

